

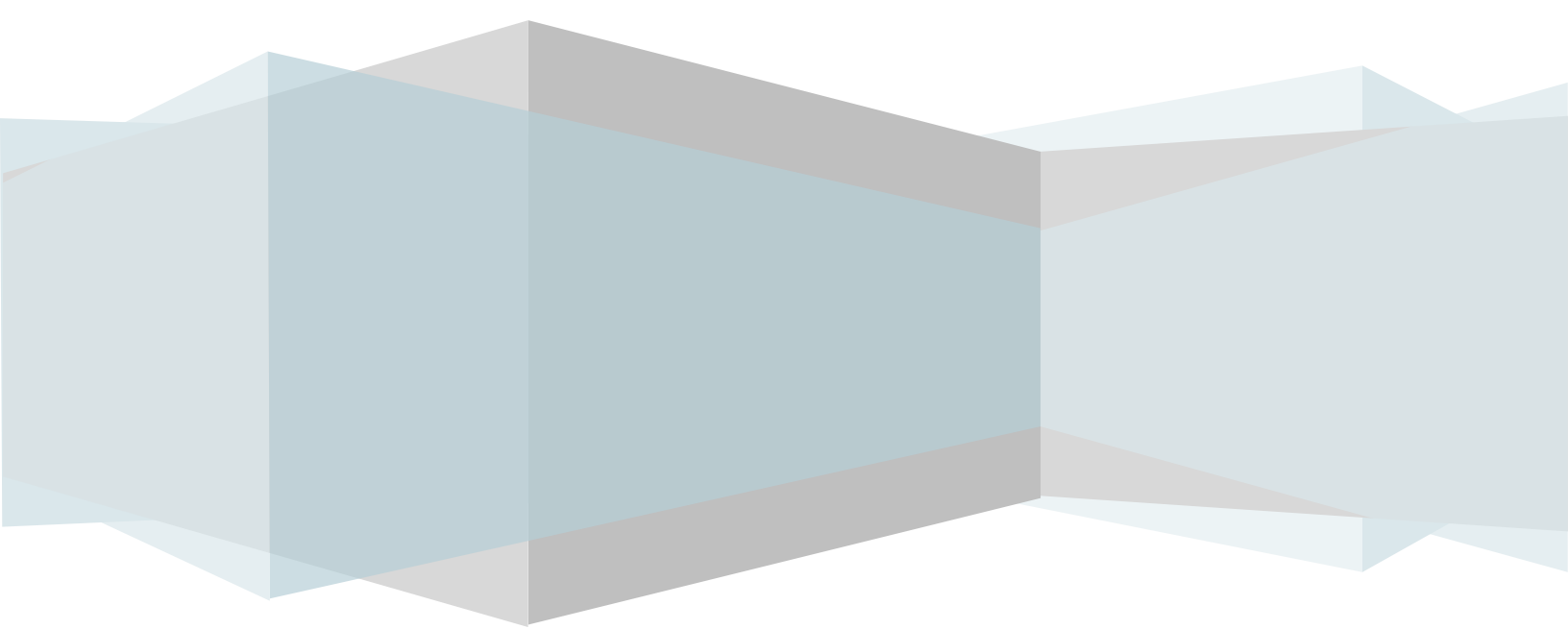
Jonesboro Police Department



Monthly Report

September 2011

Basia Combs, Crime Analyst



EXECUTIVE SUMMARY

The purpose of the Jonesboro Police Department Monthly Report is to compile data into one integrated report for review, allowing for a seamless flow of information for better decision-making. After each department collates their monthly numbers and sends it to the Office of Crime Analysis, it is organized into sections of departmental data, analyzed and packaged, and finally disseminated to department heads, the Chief of Police, the City Mayor, and the City Council. Major sections include Crime Analysis, Emergency 911, Uniform Police Division, Prowl, Criminal Investigative Division, Warrants, Drug Task Force, Traffic, Parking Enforcement, Animal Control, Fleet Maintenance, Records, and Professional Standards.

CRIME ANALYSIS

The Crime Analysis division consists of one Crime Analyst and one part-time Crime Analyst Assistant. The Crime Analyst position is responsible for the analysis and dissemination of crime activity data and the collection and maintenance of crime intelligence information for the city of Jonesboro. Additionally, the Crime Analyst is charged with providing the department with current and accurate crime maps, presenting crime activity data to audiences of interest, and responding to

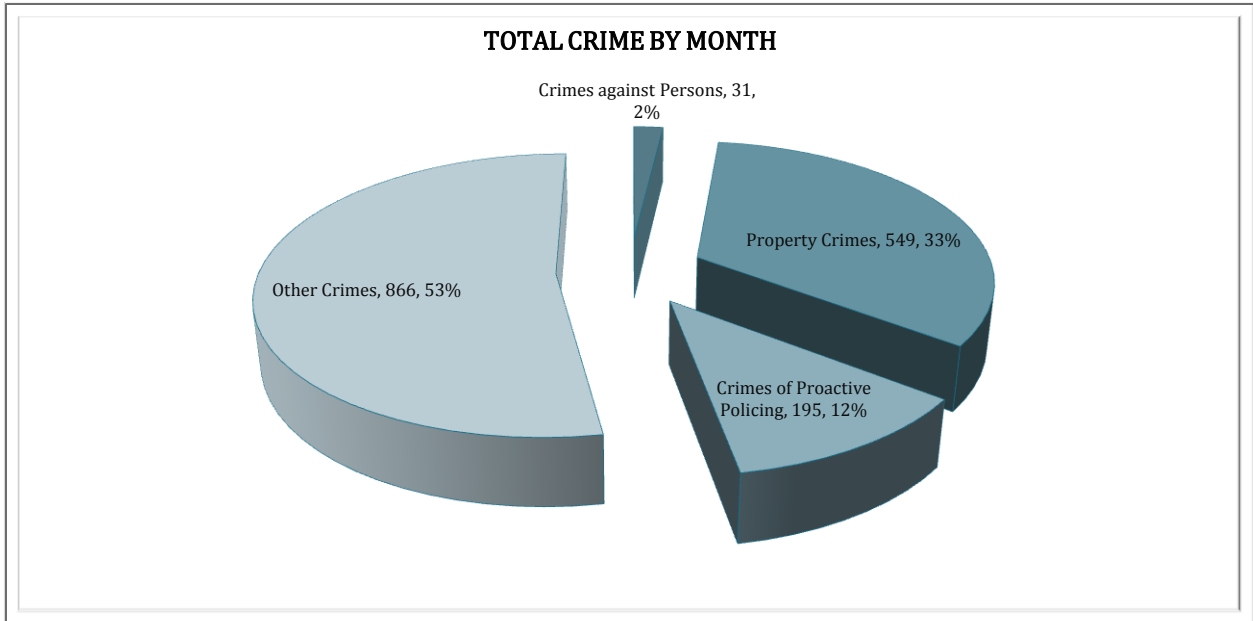
requests for crime data from civilians and departmental staff. Data exported from this division is used by field agents for more effective, efficient policing, administration for improved staffing decisions, and the Mayor's office for community decision making and enhanced public relations. The following section is broken down into Total Crime, Crimes against Persons, Property Crimes, Crimes of Proactive Policing, Other Crimes, and Arrest Demographics.

TOTAL CRIME

The crime activity for the month of September 2011 is at a total of 1,641 offenses, an 8% increase from 1,522 offenses in September 2010. With Jonesboro population equal to 67,263, the crime rate is 24.4 crimes per 1,000 population for the month of September this year, compared to the 23.6 crimes per 1,000 population last year, a 3%

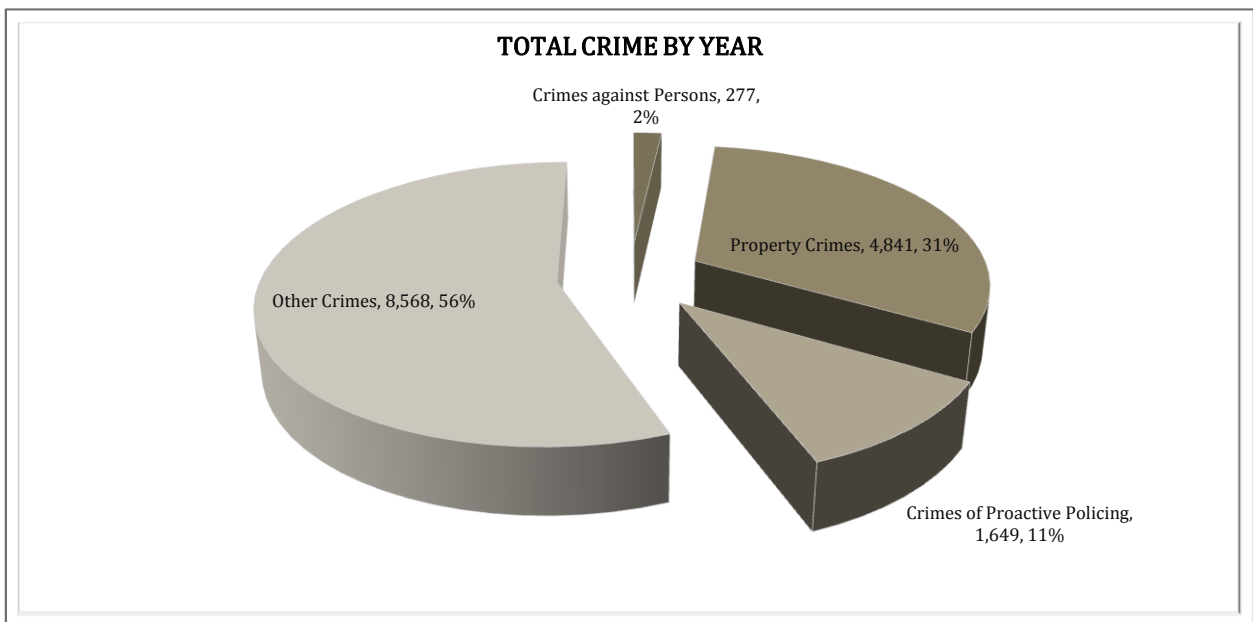
increase*. As indicated on a pie chart on the following page, Other Crimes absorb the majority, 53%, of this month's crime activity ($n = 866$). Property crimes fall into a second place and comprise of 33% of all the crimes ($n = 549$). Following in third and fourth places are crimes of proactive policing at 12% ($n = 195$) and crimes against persons at 2% ($n = 31$).

* Note: 2010 numbers are based on 2010 population estimate, $n = 64,374$.



Year to date data includes number of crimes from January through September of this year, of which there is a total of 15,335 offenses, up from 14,401 offenses that occurred January through September of last year, a 6% increase. The year to date crime rate is 228 per 1,000 population, a 2% from last year to date

crime rate. Other Crimes have the highest percentage of total crimes and are at 56% ($n = 8,568$). Property Crimes comprise of 31% of total crimes to date where $n = 4,841$. Crimes of Proactive Policing amount to 11% ($n = 1,649$) and crimes against persons comprise of 2% of total year to date number of crimes ($n = 277$).



CRIMES AGAINST PERSONS

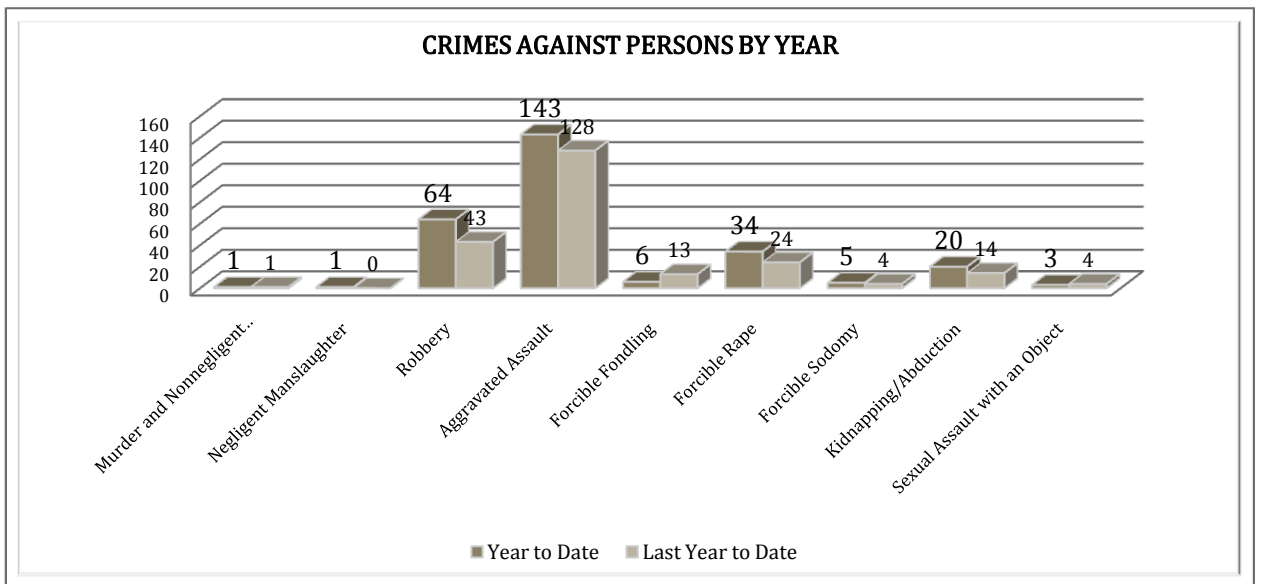
There are 9 crimes that make up this section. There were a total of 31 offenses in this area this month, an 87% increase, comparing to the last year's total in September. This increase is mainly due to

the increase of Aggravated Assault, 45% up. As demonstrated on the following chart, there are no significant changes in other crimes for this category.



Bellows bar graph shows the year to date data for Crimes against Persons, which amounts to a total of 277 crimes for this category of crimes, a 20% increase, comparing to the year to date data of last

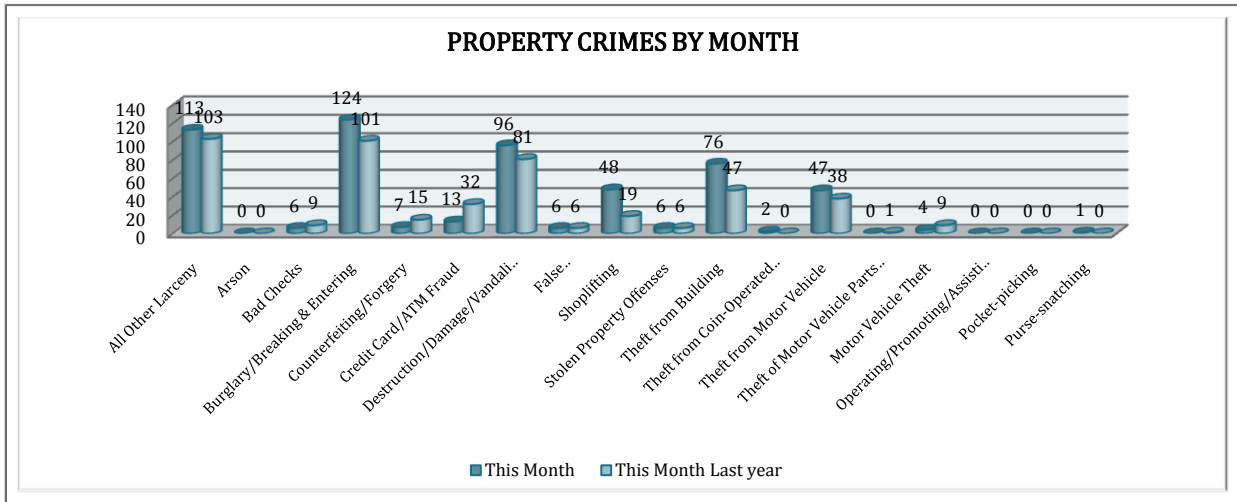
year. This increase is mainly due to the increase in a total number of Robberies, 49% up, Forcible Rape, 42% up, and Aggravated Assaults, 12% up to date this year.



PROPERTY CRIMES

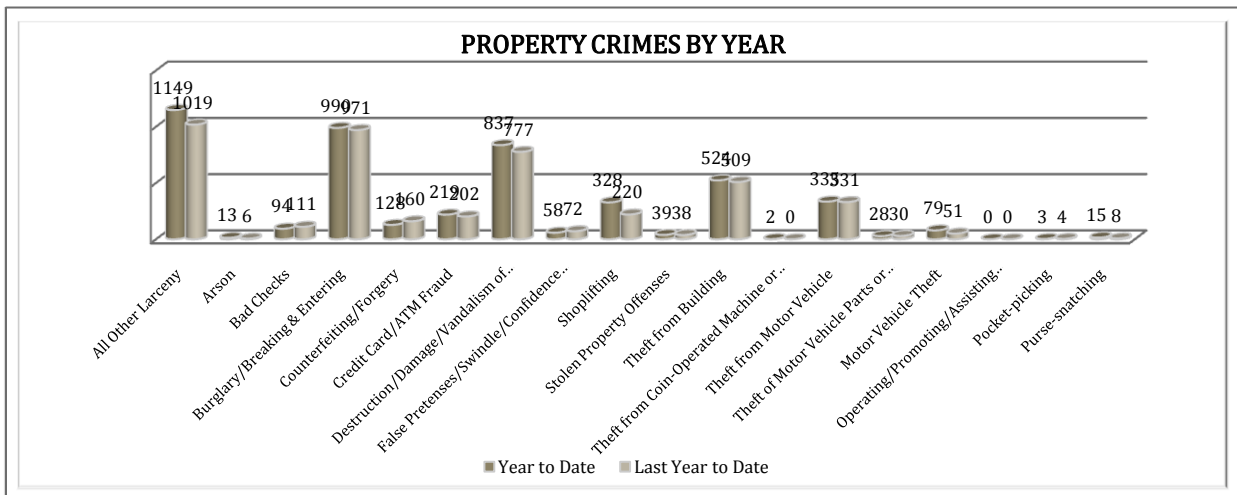
This section displays the criminal activity for 18 crimes, all against property. This month, there were a total of 549 Property Crimes, an 18% increase comparing to September of the last year. The data indicates a significant change in Counterfeiting / Forgery, 53% down, and in Credit Card/ATM Fraud, 59% down. The Motor Vehicle Theft decreased by

56%. All Other Larceny is up by 10%, Burglary/Breaking and Entering is up by 23%, Destruction/Damage/Vandalism of Property is up by 19%, Theft from Building is up by 14%, and Theft from Motor Vehicle is up by 24%. There is a significant increase in shoplifting this month, 153% up.



To date this year, 4,841 property offenses have occurred, a 7% increase compared to last year's data at this same time. There is a 15% decrease in Bad Checks, 20% decrease in Counterfeiting/Forgery, and 19% decrease in False Pretenses/Swindle/

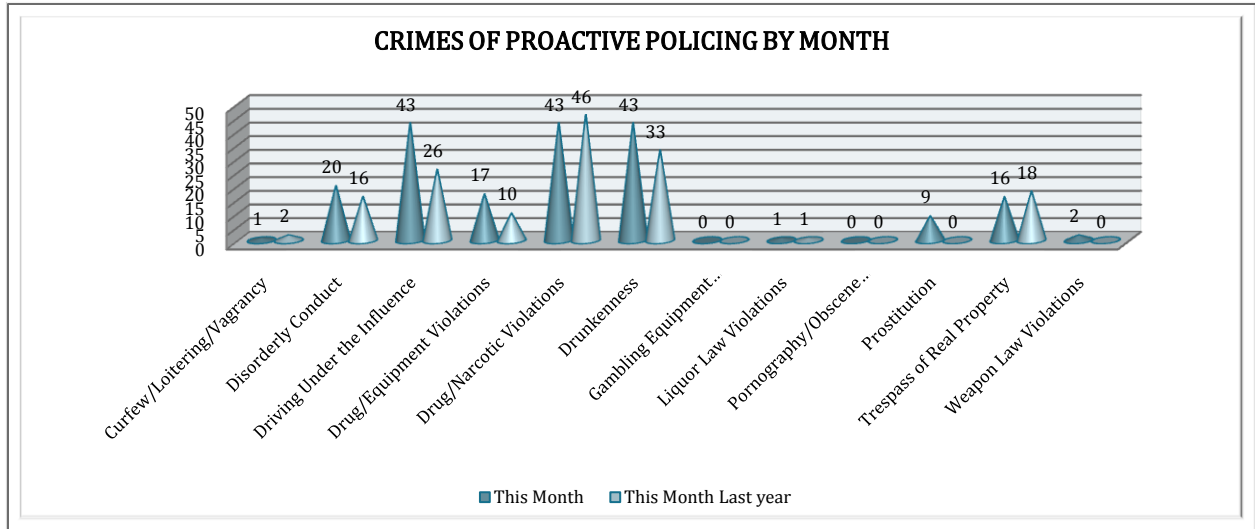
Confidence Game. Comparing to last year's to date frequencies of offenses in this category, Motor Vehicle Theft increased by 55%, Shoplifting increased by 49%, and Arson by 117%.



CRIMES OF PROACTIVE POLICING

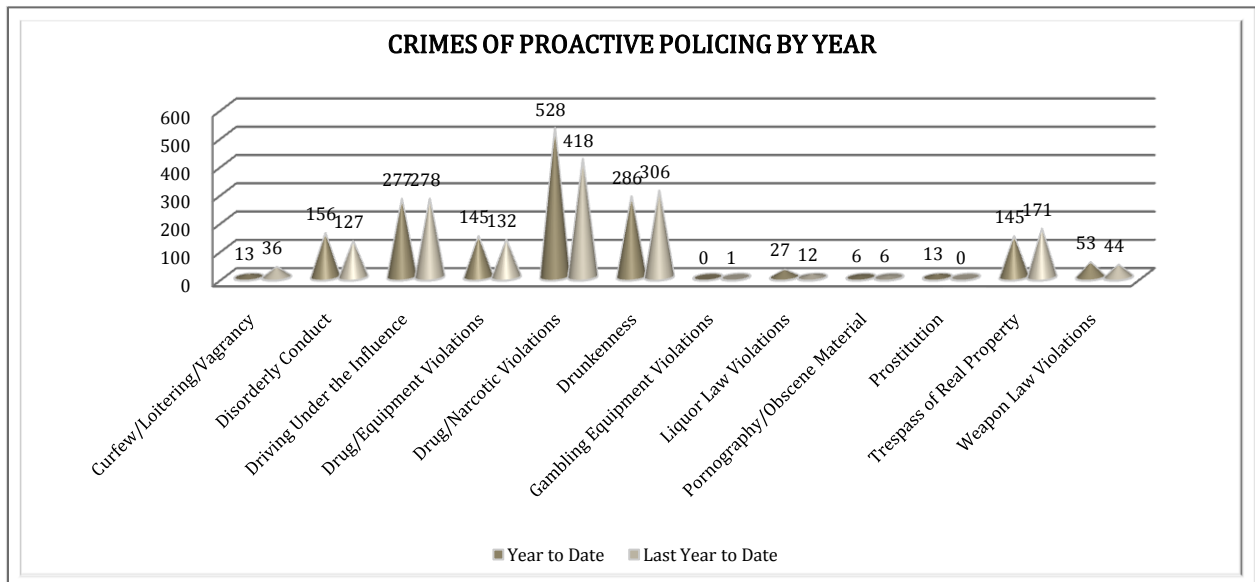
Crimes of Proactive Policing are those crimes that result from police officers actively policing the streets to combat certain types of street crime. As chart below indicates, twelve crimes fall under this category. A total of 195 offenses have

occurred this month, a 28% increase, comparing to September of the last year. There is an increase in Drunkenness offenses, 30% up and in Driving under Influence, up 65%. Drug/Equipment Violations increased 70%.



To date for the year 2011, there have been 1,649 crimes of proactive policing, up 8% from last year's to date offenses. Liquor Law Violations increased by 125%, Disorderly Conduct Offenses are up by 23%, Drug/Narcotic Violations increased by

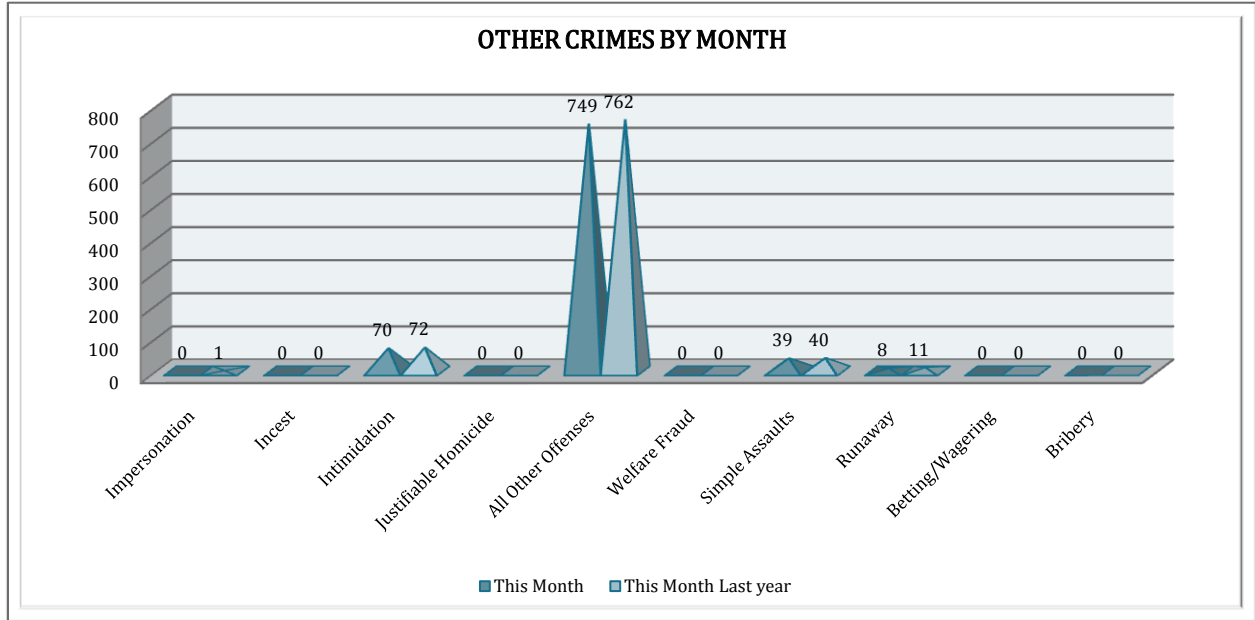
36%, Weapon Law Violations increased by 20%, and Drug/Equipment Violations increased by 10%. There is an overall 7% drop in Drunkenness, a 15% drop in Trespass of Real Property, and 64% drop in Curfew/Loitering/Vagrancy offences.



OTHER CRIMES

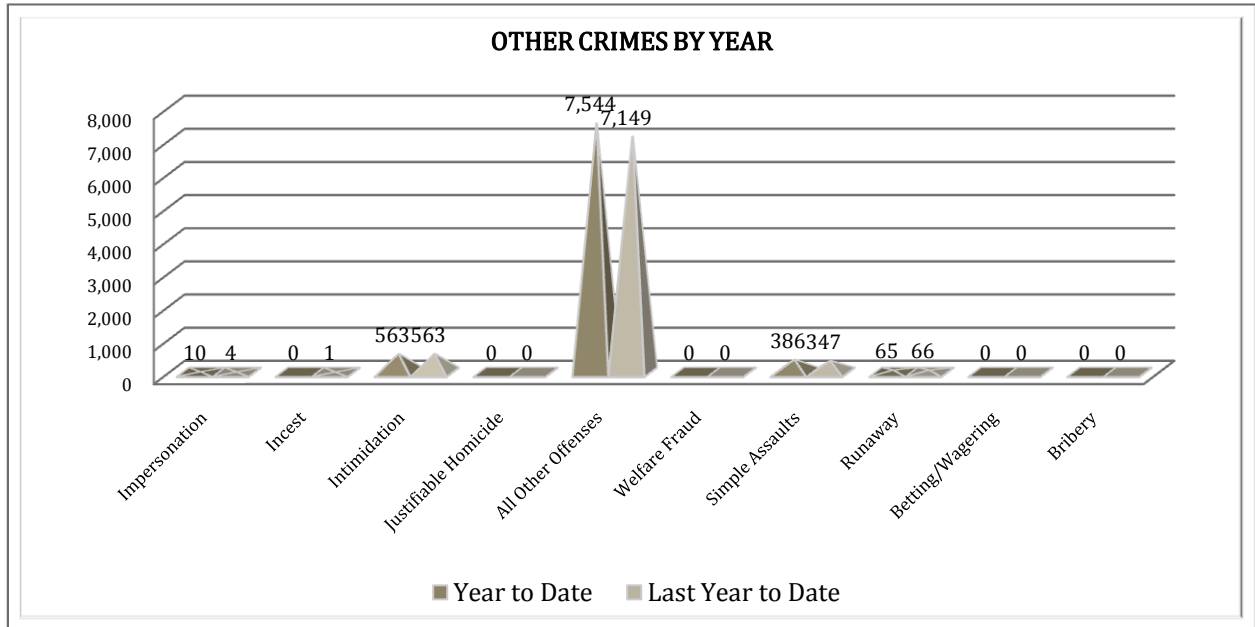
There are 10 crimes that fall into the Other Crimes category. This month, there have been a total of 866 Other Crimes, down from 886 in September of the last

year, a 2% decrease. Runaway offences are 27% down and All Other Offenses within Other Crimes categories decreased by 2%.



To date this year, there have been 8,568 Other Crimes offenses, up from 8,130 as of last year's to date offenses, a 5% increase.

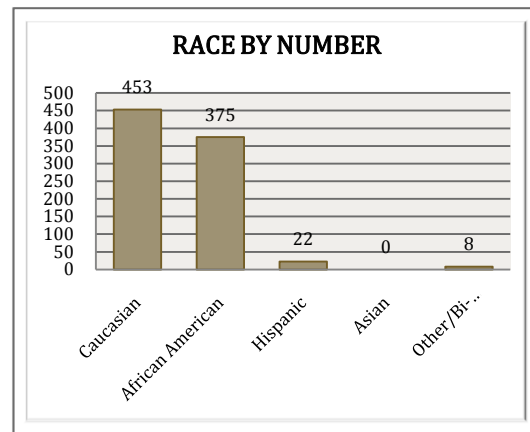
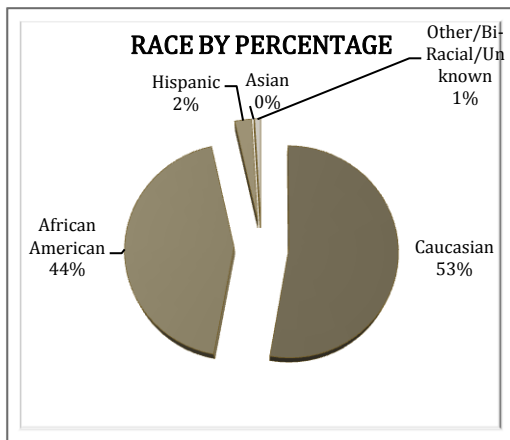
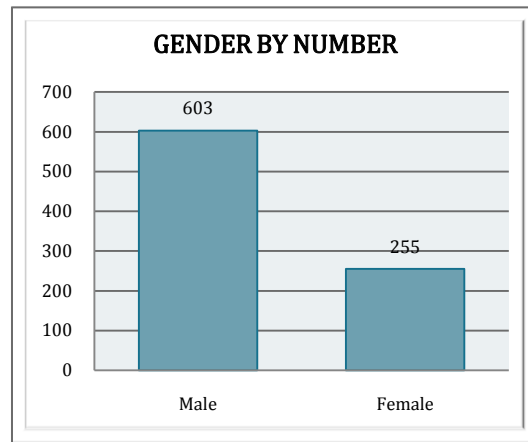
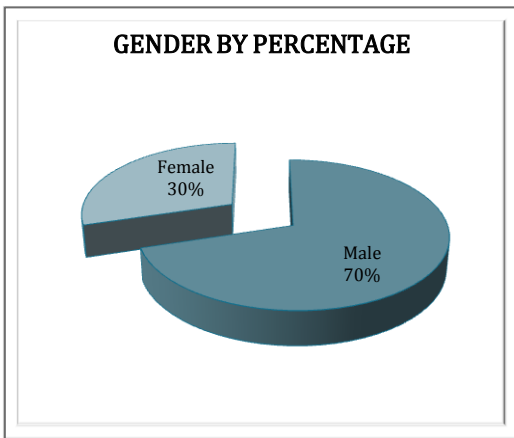
Simple Assaults are up 11% and All Other Offenses within the Other Crimes category are up 6%, compared to last year's data.



ARREST DEMOGRAPHICS

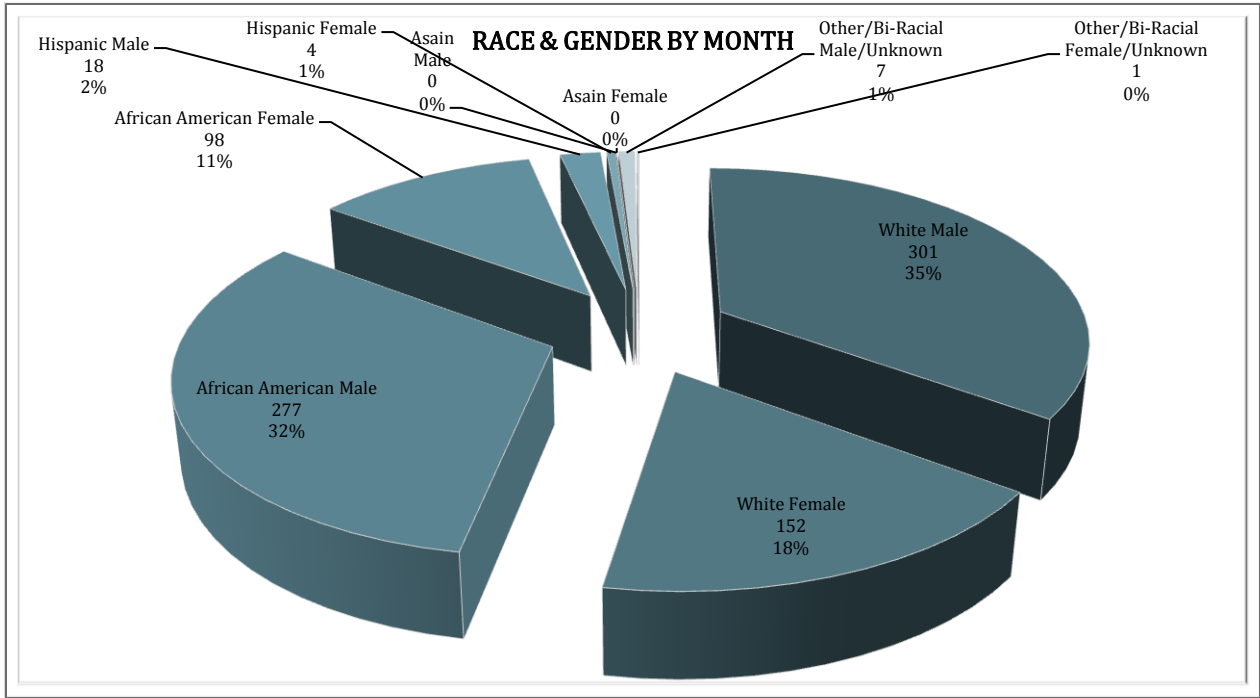
In September, there were a total of 858 arrests, as opposed to 857 arrests in August last year, no significant decrease; that is .52 arrests per crime in September of this year, comparing to .56 arrests per crime last year, resulting in a 7% decrease in arrests per crime.

This section breaks down this month's arrests by race and gender. The majority of offenders have been male ($n = 603$), as opposed to female ($n = 255$) and Caucasian ($n = 453$) and African American ($n = 375$) as opposed to Hispanic ($n = 22$), Asian ($n = 0$), or other/unknown/bi-racial ($n = 8$).

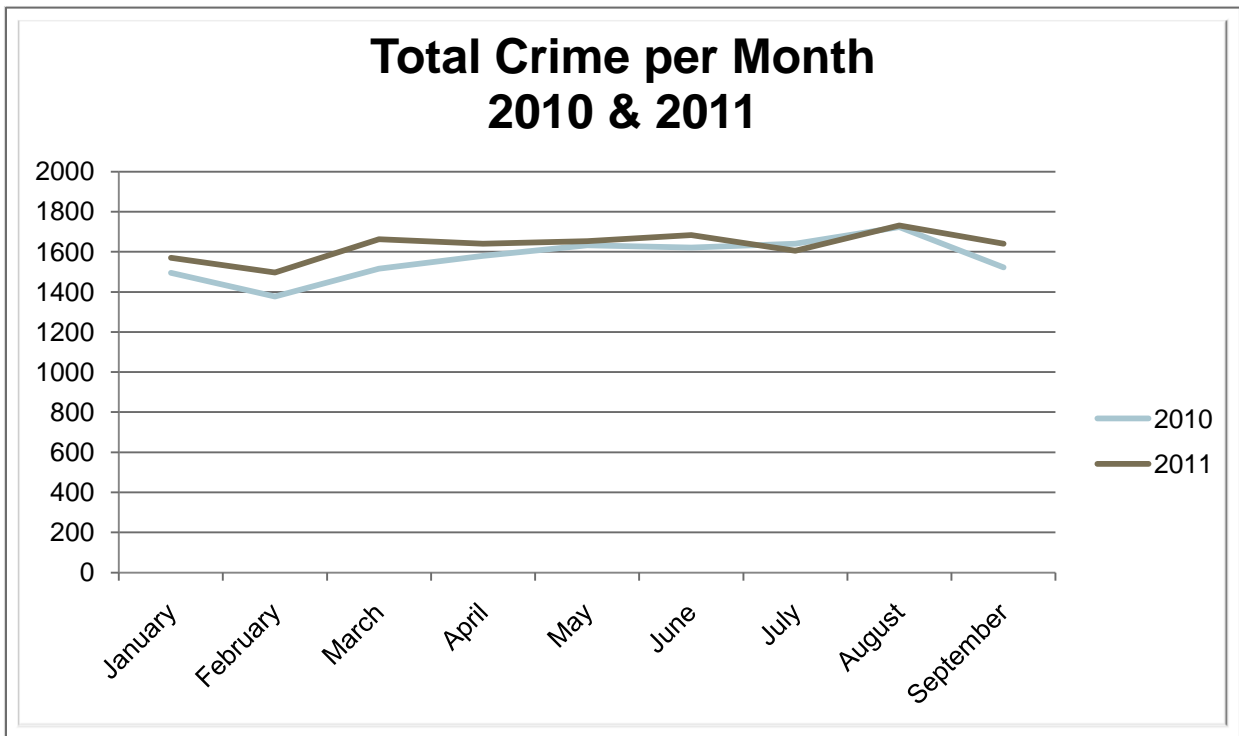


Caucasian males make up the majority, 35%, of arrestees this month ($n = 301$). African American males make up 32% of arrestees for the month of September ($n = 277$). Caucasian females make up 18% ($n = 152$) and African American females make up 11% ($n = 98$). Hispanic males

make up 2% ($n = 18$). There were also 7 Other/Biracial Males, 4 Hispanic Females, 1 Other/Biracial Females arrested in the month of September. This distribution can be reviewed in the pie chart on the following page.



*Note: The 0% labels may represent rounded real percentage values of $0 > 0.99$.



EMERGENCY 911

Also known as Public Safety Answering Point (PSAP), the Emergency 911 Division is responsible for answering all calls from public for emergency assistance, accessing the needed information to best assist, and then assigning the most efficient and effective

emergency response. In addition, this division is responsible for setting priority call dispatching to field units including Police, Fire, and EMS. Emergency 911 also maintains all records for radio logs, calls for service, and other emergency service data collections.

Calls by Type	This Month	This Month Last Year	YTD	Last YTD	Change By Month	Change YTD
Land Line E911	855	859	6,622	6,977	0%	-5%
Cell Phone E911	3,815	3,351	31,982	23,917	14%	34%
Admin Lines Non Emergency	15,316	15,775	131,147	122,947	-3%	7%
TOTALS	19,986	19,985	169,751	153,841	0%	10%
Calls by Agency	This Month	This Month Last Year	YTD	Last YTD	Change By Month	Change YTD
Jonesboro PD Calls	7,011	6,149	54,311	51,499	14%	5%
Craighead Cty Sheriff	1,133	1,051	9,802	8,337	8%	18%
Jonesboro Fire Dpt - dispatch	186	189	1,485	1,235	-2%	20%
Jonesboro Fire Dpt - Med Asst	82	122	895	944	-33%	-5%
Craighead Cty - Fire	48	77	429	451	-38%	-5%
Craighead Cty - 1st Responder	99	88	701	580	13%	21%
Emerson Ambulance	229	243	2,012	1,951	-6%	3%
Medic One	306	289	2,416	2,349	6%	3%
Air Evac	3	1	9	8	200%	13%
Coroner	3	2	19	21	50%	-10%
ARK State Police	16	10	118	117	60%	1%
Jonesboro Animal Control	2	73	151	556	-97%	-73%
Wreckers Called	162	181	1,090	1,411	-10%	-23%
TOTALS	9,280	8,475	73,438	69,459	9%	6%
Calls by Municipality	This Month	This Month Last Year	YTD	Last YTD	Change By Month	Change YTD
Bay PD	116	96	851	855	21%	0%
Bono PD	208	244	1467	1634	-15%	-10%
Brookland PD	169	170	1166	1659	-1%	-30%
Caraway PD	103	104	697	588	-1%	19%
Cash PD	11	49	652	448	-78%	46%
Egypt PD	11	38	86	384	-71%	-78%
Lake City PD	148	115	903	989	29%	-9%
Monette PD	189	127	1155	1098	49%	5%
TOTALS	955	943	6,977	7,655	1%	-9%

UNIFORM PATROL DIVISION

The UPD is responsible for responding to calls into the Emergency - 911 Division by civilians and are normally the first responders. Jonesboro is divided into 6 patrol districts. Officers from UPD are assigned to a

district and work the same district every shift. In addition, when a Traffic Officer is not available, a UPD Officer will respond to traffic accidents and assist in directing traffic when necessary.

Incidents	This Month	This Month Last Year	YTD	Last YTD	Change By Month	Change YTD
Calls for Service	7,020	6,065	60,050	54,512	16%	10%
Complaints / Calls	4,064	3,750	37,159	34,106	8%	9%
Assists	919	841	10,671	9,776	NC	NC
Incident Reports	916	832	8,778	8,612	10%	2%
Street Accidents	66	137	730	867	-52%	-16%
Private Property Accidents	50	30	402	246	67%	63%
Traffic Stops	1,807	1,757	18,383	17,416	3%	6%
Traffic Citations	603	764	6,201	6,374	-21%	-3%
DWI	34	15	218	183	127%	19%
Mis. Arrests	458	349	4,501	n/a	NC	NC
Felony Arrests	80	41	828	n/a	NC	NC
Warrants Served	1,549	743	13,386	10,491	108%	28%
Alarms	350	219	3,014	2,721	60%	11%
Written Warnings	764	916	6,327	6,979		
TOTALS	18,680	16,459	170,648	152,283	13%	12%
Hours Worked	8,815	10,358	88,771	88,836	-15%	NC

PROWL

The Prowl unit is a uniformed street crimes unit specializing in criminal patrol, narcotics enforcement, gang investigation, and prostitution activity. The unit conducts directed patrols, investigates citizen

complaints of street-level criminal activity, and directly assists the 2nd Judicial Drug Task Force. PROWL also assists any division within the Jonesboro Police Department at any time when needed.

Incidents	This Month	This Month Last Year	YTD	Last YTD	Change By Month	Change YTD
Street Accidents	0	0	0	0	N/C	N/C
Private Property Accidents	0	0	0	1	N/C	-100%
Traffic Citations	17	28	275	283	-39%	-3%
DWI	1	0	1	1	N/C	0%
Mis. Arrests	44	112	864	851	-61%	2%
Felony Arrests	5	35	234	256	-86%	-9%
Drug Arrests	1	29	235	257	-97%	-9%
Public Intoxication Arrests	2	0	2	0	N/C	N/C
Calls For Service	81	66	777	830	23%	-6%
Alarms	0	0	0	0	N/C	N/C
Parking Citations	0	0	0	0	N/C	N/C
Written Warnings	68	20	429	209	240%	105%
Assists	0	0	0	0	N/C	N/C
TOTALS	219	290	2,817	2,688	-24%	5%
Value of Drugs Seized	\$100	\$15,620	\$52,550	\$68,438	-99%	-23%
Value of Assets Seized	0	1,855	51,930	57,633	-100%	-10%
Patrol Miles	5,350	5,900	46,720	46,100	-9%	1%

CRIMINAL INVESTIGATIVE DIVISION

The CID is responsible for conducting follow-up investigations into criminal acts reported to the Jonesboro Police Department. The primary goal is to collect and present evidence that conclusively leads to a

successful arrest. Additionally, CID is charged with clearing additional crimes, recovering stolen property, preventing additional crimes, and gathering intelligence information.

Investigations	This Month	This Month Last Year	YTD	Last YTD	Change By Month	Change YTD
Criminal Investigations Assigned	71	85	811	804	-16%	1%
Criminal Investigations Closed	43	86	631	742	-50%	-15%
Cleared by Arrests	24	48	441	447	-50%	-1%
Unfounded	3	12	57	75	-75%	-24%
Exceptionally Cleared	5	13	79	122	-62%	-35%
Filed With Prosecutors Office	1	6	28	61	-83%	-54%
TOTALS	147	250	2047	2251	-41%	-9%
Crimes Against Persons	This Month	This Month Last Year	YTD	Last YTD	Change By Month	Change YTD
Criminal Investigations Assigned	25	15	196	164	67%	20%
Criminal Investigations Closed	19	15	173	180	27%	-4%
Cleared by Arrests	13	10	125	120	30%	4%
Unfounded	2	1	14	7	100%	100%
Exceptionally Cleared	3	3	27	38	0%	-29%
Filed With Prosecutors Office	1	1	11	15	0%	-27%
TOTALS	63	45	546	524	40%	4%
Property Crimes	This Month	This Month Last Year	YTD	Last YTD	Change By Month	Change YTD
Criminal Investigations Assigned	39	62	563	571	-37%	-1%
Criminal Investigations Closed	14	58	392	471	-76%	-17%
Cleared by Arrests	11	36	306	294	-69%	4%
Unfounded	1	9	36	55	-89%	-35%
Exceptionally Cleared	2	9	58	84	-78%	-31%
Filed With Prosecutors Office	0	4	10	38	-100%	-74%
TOTALS	67	178	1365	1513	-62%	-10%
Crimes Against Children	This Month	This Month Last Year	YTD	Last YTD	Change By Month	Change YTD
Criminal Investigations Assigned	3	6	24	51	-50%	-53%
Criminal Investigations Closed	0	6	31	60	-100%	-48%
Cleared by Arrests	0	2	10	27	-100%	-63%
Unfounded	0	2	14	16	-100%	-13%
Exceptionally Cleared	0	1	1	7	-100%	-86%
Filed With Prosecutors Office	0	1	3	2	-100%	50%
TOTALS	3	18	83	163	-83%	-49%
Miscellaneous Investigations Assigned	3		23		N/C	N/C
Miscellaneous Investigations Cleared	4		30		N/C	N/C

WARRANTS

The Warrants Division is responsible for serving warrants, criminal summonses, and subpoenas that are issued by the District Court. On city court days, the Warrants Division provides a bailiff for court and a transport officer. In addition, this Division is

responsible for transporting wanted persons arrested in other jurisdictions back to Jonesboro. The STEP program operates within this division and is a grant-funded operation in which officers can get paid overtime to enforce the safety belt law.

Arrests	This Month	This Month Last Year	YTD	Last YTD	Change By Month	Change YTD
Misdemeanor	1083	1462	6394	5850	-26%	9%
Felony	2	0	8	4	N/C	100%
Total Arrests	1085	1462	6402	5854	-26%	9%
Warrants by Activity	This Month	This Month Last Year	YTD	Last YTD	Change By Month	Change YTD
Subpoenas	522	387	2176	2164	35%	1%
Commitments	1	1	6	18	0%	-67%
Traffic Citations	2	1	10	13	100%	-23%
Complaints	4	0	5	0	N/C	N/C
Assist	0	0	0	0	N/C	N/C
Alarms	0	0	0	0	N/C	N/C

Hours by Activity	This Month	This Month Last Year	YTD	Last YTD	Change By Month	Change YTD
SI Criminal	259.5	325.5	2025	1897.88	-20%	7%
Court	111	124.75	1200.5	1201.08	-11%	0%
Prisoner Transport	21.5	27.5	237	262.18	-22%	-10%
Hours Worked	This Month	This Month Last Year	YTD	Last YTD	Change By Month	Change YTD
Regular Hours Worked	637	781	5670	5056.5	-18%	12%
Overtime Hours Worked	2	8.75	81.5	53	-77%	54%
TOTAL Hours Worked	639	789.75	5751.5	5109.5	-19%	13%
Mileage	This Month	This Month Last Year	YTD	Last YTD	Change By Month	Change YTD
Total Mileage	2505	3893	23717	26642	-36%	-11%
STEP	This Month	This Month Last Year	YTD	Last YTD	Change By Month	Change YTD
DWI Arrest	0	1	8	5	-100%	60%
DUI Arrest	0	0	0	0	N/C	N/C
Traffic Citations	184	94	1398	1076	96%	30%
Felony Arrests	0	0	1	2	N/C	-50%
Drug Arrests	0	0	0	1	N/C	-100%
STEP TOTALS	184	95	1407	1084	94%	30%
STEP Hours Worked	137	57	761	1002	140%	-24%
STEP Miles Driven	865	448	6628	7261	93%	-9%

DRUG TASK FORCE

The DTF is responsible for investigating major drug traffickers in the area, including all types of illegal drugs. They work closely

with local, state, and federal agencies to eradicate drugs from the community.

INVESTIGATIONS	This Month	This Month Last Year	YTD	Last YTD	Change By Month	Change YTD
Opened	22	24	219	255	-8%	-14%
Closed	21	21	215	223	0%	-4%
TOTAL	43	45	434	478	-4%	-9%
With Nexus to Jonesboro	This Month	This Month Last Year	YTD	Last YTD	Change By Month	Change YTD
Opened	22	26	225	227	-15%	-1%
Closed	0	0	0	0	N/C	N/C
TOTAL	22	26	225	227	-15%	-1%
Outside Jonesboro (No Known Nexus)	This Month	This Month Last Year	YTD	Last YTD	Change By Month	Change YTD
Opened	0	0	13	15	N/C	-13%
Closed	0	0	0	0	N/C	N/C
TOTAL	0	0	13	15	N/C	-13%
ASSISTANCE RENDERED	This Month	This Month Last Year	YTD	Last YTD	Change By Month	Change YTD
Assist to Outside Agencies	1	1	14	27	0%	-48%
Assist to Jonesboro UPD/CID	2	17	114	141	-88%	-19%
ARRESTS	This Month	This Month Last Year	YTD	Last YTD	Change By Month	Change YTD
Miscellaneous	8	6	68	54	33%	26%
Felony	41	22	256	331	86%	-23%
Marijuana	10	9	70	72	11%	-3%
Cocaine	4	3	15	16	33%	-6%
Crack Cocaine	3	4	20	39	-25%	-49%
Methamphetamine/ICE	9	4	86	81	125%	6%
LSD	0	0	0	0	N/C	N/C
Ecstasy (MDMA or Other Designer Drug)	0	0	0	5	N/C	-100%
Prescription	2	1	20	18	100%	11%
Opiates (Heroin,Opium)	0	0	1	0	N/C	N/C
Labs	0	0	16	19	N/C	-16%
All Other Drug Offenses	0	0	0	0	N/C	N/C

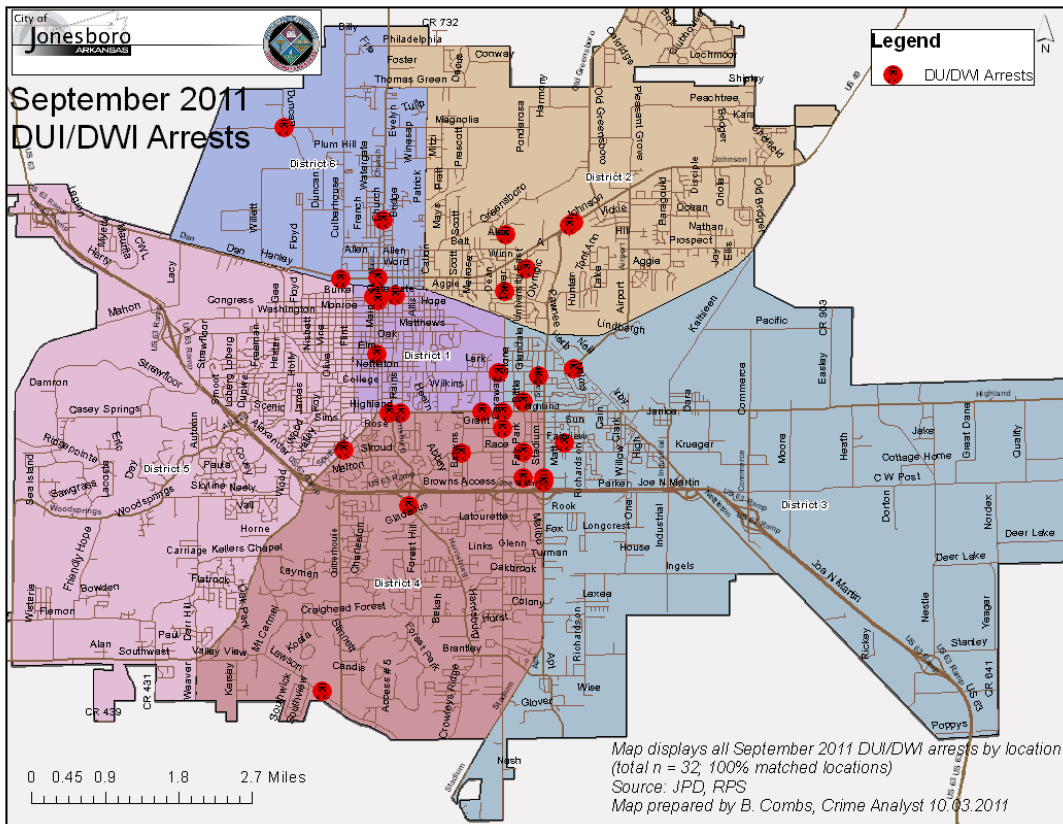
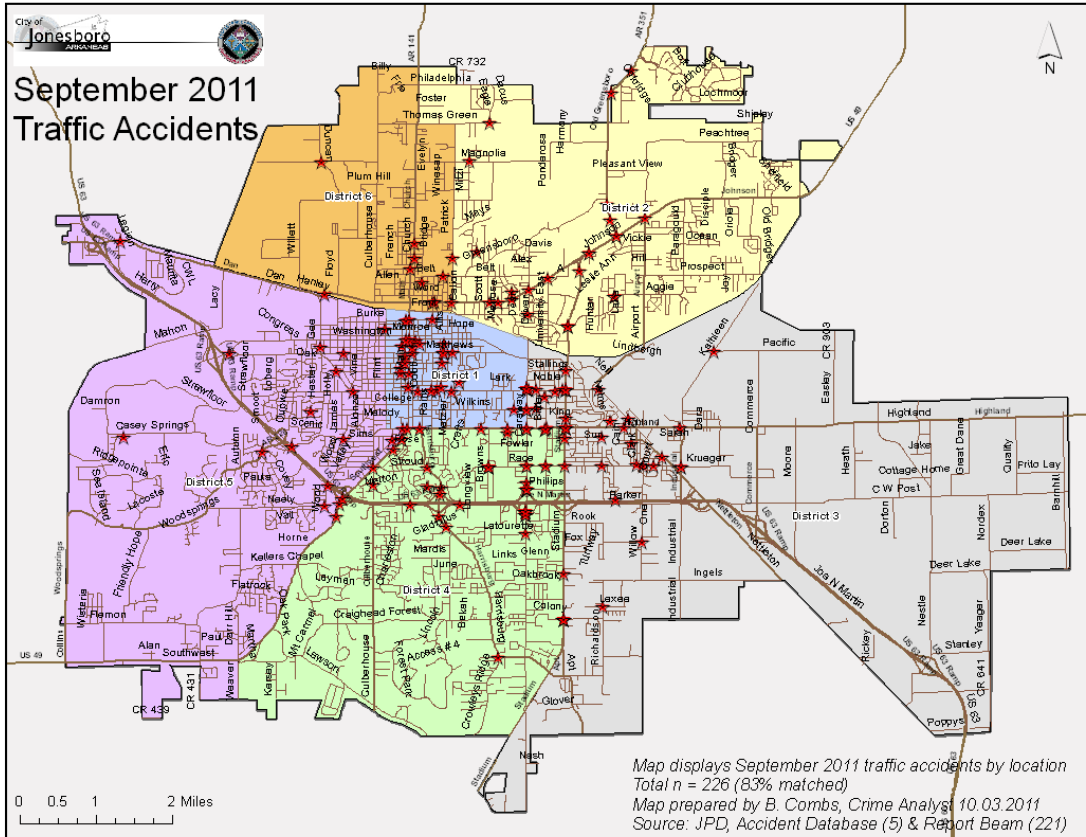
ASSET FORFEITURE	This Month	This Month Last Year	YTD	Last YTD	Change By Month	Change YTD
Vehicles Seized(No.)	0	0	2	5	N/C	-60%
Value of Assets Seized(Includes Value of vehicles)	\$14,744	\$300	\$63,229	\$44,157	4815%	43%
Asset Value Awarded to Jonesboro PD (State)	\$0	\$0	\$0	\$0	N/C	N/C
Asset Value Awarded to Jonesboro PD (Federal)	\$0	\$0	\$0	\$0	N/C	N/C
Asset Value Awarded to Jonesboro PD (Total)	\$0	\$0	\$0	\$0	N/C	N/C
ARRESTS DEMOGRAPHICS	This Month	This Month Last Year	YTD	Last YTD	Change By Month	Change YTD
White	24	7	154	123	243%	25%
African American	6	8	80	70	-25%	14%
Latino	0	3	7	28	-100%	-75%
Asain	1	0	1	1	N/C	0%
Other/Bi-Racial	0	0	0	0	N/C	N/C
Male	21	15	180	168	40%	7%
Female	10	3	59	39	233%	51%
White Male	14	5	100	93	180%	8%
White Female	10	2	50	33	400%	52%
African American Male	6	7	71	69	-14%	3%
African American Female	0	1	7	3	-100%	133%
Latino Male	0	2	7	23	-100%	-70%
Latino Female	0	0	0	3	N/C	-100%
Asain Male	0	0	0	1	N/C	-100%
Asain Female	0	0	0	0	N/C	N/C
Other/Bi-Racial Male	0	0	0	0	N/C	N/C
Other/Bi-Racial Female	0	0	0	0	N/C	N/C

TRAFFIC

Comprised of three motor units and three Chargers, the Traffic Enforcement Unit responds to traffic accidents and provides increased enforcement in particularly challenging areas. This unit also provides

extra coverage for specific congestion problems and special events in the community. Last, they work details targeting specific issues, such as DWI enforcement and traffic safety checkpoints.

Incidents	This Month	This Month Last Year	YTD	Last YTD	Change By Month	Change YTD
Street Accidents	148	119	1146	1143	24%	0%
Private Property Accidents	33	33	359	337	0%	7%
Traffic Citations	245	226	1699	2216	8%	-23%
DWI	3	2	33	27	50%	22%
Mis. Arrests	8	47	150	181	-83%	-17%
Felony Arrests	0	14	14	36	-100%	-61%
Drug Arrests	0	0	0	0	N/C	N/C
Public Intoxication Arrests	1	0	2	2	N/C	0%
Calls For Service	286	275	2475	2417	4%	2%
Alarms	0	4	11	15	-100%	-27%
Parking Citations	0	0	0	0	N/C	N/C
Written Warnings	28	74	718	962	-62%	-25%
TOTALS	752	794	6607	7336	-5%	-10%
Value of Asstes Seized	\$0	\$0	\$0	\$0	N/C	N/C
Patrol Miles	4,990	4,213	43,147	47,615	18%	-9%
Hours Worked	828	655.5	6996	7011.5	26%	0%



PARKING ENFORCEMENT

The Parking Enforcement Division is responsible for enforcing parking laws in the downtown area. This service provides a safe

and convenient parking situation for the public.

CITATIONS ISSUED	This Month	This Month Last Year	YTD	Last YTD	Change By Month	Change YTD
Citations	25	42	0	438	-40%	-100%
Verbal Warnings	17	0	0	0	N/C	N/C
MINUTES BY ACTIVITY	This Month	This Month Last Year	YTD	Last YTD	Change By Month	Change YTD
Office	465	415	5,015	9,690	12%	-48%
Admin(Non-Office)	465	825	6,075	8,520	-44%	-29%
Community	0	0	0	0	N/C	N/C
Training	0	0	115	0	N/C	N/C
Patrol	5,760	4,100	50,070	33,720	40%	48%

ANIMAL CONTROL

The Animal Control Division is responsible for educating the public on safe and humane issues regarding animal treatment, enforcing all animal laws and ordinances, assisting the

public in resolving animal issues, and protecting the safety and welfare of the citizens and animals in this community.

Incidents	This Month	This Month Last Year	YTD	Last YTD	Change By Month	Change YTD
Barking Complaints	7	11	104	67	-36%	55%
Bite Reports	4	10	100	81	-60%	23%
Door Hangers	25	34	311	278	-26%	12%
Welfare Checks	91	87	1,018	669	5%	52%
Advised of Rights	858	345	6,119	2,291	149%	167%
Incident Reports	9	4	48	51	125%	-6%
Gone on Arrival	30	46	288	356	-35%	-19%
Complaints	644	711	5,875	5,442	-9%	8%
Desk Complaints	1,207	1,136	13,966	7,732	6%	81%
Captured Dogs	112	143	1,257	1,086	-22%	16%
Captured Cats	76	8	182	103	850%	77%
Captured Wildlife	54	42	253	275	29%	-8%
Chemical Captures	1	8	24	51	-88%	-53%
Traps	35	29	126	179	21%	-30%
Deceased Animals	34	91	537	604	-63%	-11%
Assist J.P.D.	3	6	81	59	-50%	37%
Assist C.S.O.	0	0	10	2	N/C	400%
Public Relations	911	593	7,468	4,710	54%	59%
CITATIONS ISSUED	85	87	1,003	368	-2%	173%
WARNINGS ISSUED	34	51	573	338	-33%	70%
Physical Arrests	5	1	56	10	400%	460%
City Warrants Served	11	3	230	22	267%	945%
County Warrants Served	23	0	47	0	N/C	N/C
Felony Bench Warrants	2	0	8	0	N/C	N/C
Euthanized	96	80	738	514	20%	44%
Deceased Animals Landfill lbs.	2,720	3,500	34,400	33,440	-22%	3%
Wildlife Euthanized	54	42	260	275	29%	-5%
Sent to Rescue Centers	1	16	28	121	-94%	-77%
Adoptions	39	33	384	288	18%	33%
Miles Driven	7,939	8,529	64,477	67,106	-7%	-4%

FLEET MAINTENANCE

The Fleet Maintenance is responsible for all of the police vehicle maintenance upkeep, cleanliness, and purchasing. In addition, this

Division handles most of the purchasing of equipment, supplies, and uniforms for all of the Police Department.

Repair Costs by Model Year	This Month	This Month Last Year	YTD	Last YTD	Change By Month	Change YTD
95-99	\$0.00	\$0.00	\$0.00	\$583.68	N/C	-100%
2000	\$0.00	\$0.00	\$292.92	\$280.46	N/C	4%
2001	\$0.00	\$11.23	\$213.02	\$323.26	-100%	-34%
2002	\$0.00	\$0.00	\$405.65	\$2,054.11	N/C	-80%
2003	\$0.00	\$0.00	\$0.00	\$577.11	N/C	-100%
2004	\$0.00	\$592.48	\$1,531.66	\$8,229.65	-100%	-81%
2005	\$2,071.86	\$33.69	\$9,411.25	\$8,223.54	6050%	14%
2006	\$2,208.14	\$2,554.54	\$28,175.77	\$30,178.14	-14%	-7%
2007	\$1,305.90	\$1,186.99	\$13,379.46	\$10,651.65	10%	26%
2008	\$133.85	\$0.00	\$1,812.03	\$1,397.19	N/C	30%
2009	\$296.54	\$0.00	\$946.57	\$952.23	N/C	N/C
2010	\$0.00	\$0.00	\$433.45	\$0.00	N/C	N/C
2011	\$11.61	n/a	\$69.66	n/a	N/C	N/C
Totals by Year Model						
TOTALS	\$6,027.90	\$4,378.93	\$56,671.44	\$63,451.02	38%	-11%

Routine Preventative Maintenance by Model Year	This Month	This Month Last Year	YTD	Last YTD	Change By Month	Change YTD
95-99	\$0.00	\$20.00	\$78.00	\$73.50	-100%	6%
2000	\$0.00	\$0.00	\$40.00	\$29.00	N/C	38%
2001	\$20.00	\$0.00	\$88.00	\$60.00	N/C	47%
2002	\$0.00	\$20.00	\$50.30	\$92.50	-100%	-46%
2003	\$0.00	\$40.00	\$98.00	\$965.15	-100%	-90%
2004	\$455.29	\$830.52	\$1,940.80	\$4,331.07	-45%	-55%
2005	\$181.35	\$436.89	\$4,090.61	\$4,260.57	-58%	-4%
2006	\$1,853.80	\$2,527.91	\$14,065.98	\$13,907.80	-27%	1%
2007	\$2,312.68	\$1,176.55	\$9,862.01	\$9,921.94	97%	-1%
2008	\$280.65	\$587.61	\$2,585.23	\$2,576.38	-52%	0%
2009	\$1,325.36	\$1,162.64	\$4,236.08	\$2,237.89	N/C	N/C
2010	\$666.71	\$601.30	\$2,122.69	\$1,769.40	N/C	N/C
2011	\$60.00	n/a	\$220.00	n/a	N/C	N/C
Totals by Year Model						
TOTALS	\$7,155.84	\$7,403.42	\$39,477.70	\$40,225.20	-3%	-2%

RECORDS

The Records Division is responsible for providing administrative and clerical support to the department. Major responsibilities include entering the accident and incident reports and tickets into the records database management system, assisting the general

public for report requests, performing criminal backgrounds, serving as a switchboard at times, performing validations, and setting up and managing the payment plans out of court.

RECORDS	This Month	This Month Last Year	YTD	Last YTD	Change By Month	Change YTD
Incident/Arrest Reports Processed	1,367	1,173	12,068	11,160	17%	8%
Accident Reports Processed	227	258	1,840	2,067	-12%	-11%
Citations Processed	4,369	3,880	40,072	36,954	13%	8%
Warnings Processed	643	495	5,652	5,240	30%	8%
Backgrounds	13		163	153	N/C	7%
Fingerprints	87		867	671	N/C	29%
Photos	0		17	15	N/C	13%
Accident Requests	137		915	845	N/C	8%
Accident Requests Online	40	169	1,321	1,441	-76%	-8%
TOTALS	6,883	5,975	62,915	58,546	15%	7%

PROFESSIONAL STANDARDS

The Office of Professional Standards, a unit within Administration, is charged with the compilation and updating of an extensive set of policies and procedures and providing a general operations guideline and code of conduct for officers to follow. In the event

that a member of the public does experience a negative interaction with an officer, mechanisms are in place for them to lodge a complaint. All complaints are reviewed and investigations completed in a timely manner.

Professional Standards	This Month	This Month Last Year	YTD	Last YTD	Change By Month	Change YTD
Opened (TOTAL)	2	4	36	55	-50%	-35%
Closed	2	4	34	55	-50%	-38%
Inquiries	2	4	28	52	-50%	-46%
Formal Investigations	0	0	9	3	N/C	200%
Sustained	1	3	28	43	-67%	-35%
Not-Sustained	1	0	3	3	N/C	0%
Exhonerated	0	0	0	2	N/C	-100%
Unfounded	0	1	3	6	-100%	-50%

*** End of the Report ***