
JPD Monthly Report

September 2010

Heather Clements,
Crime Analyst



Executive Summary

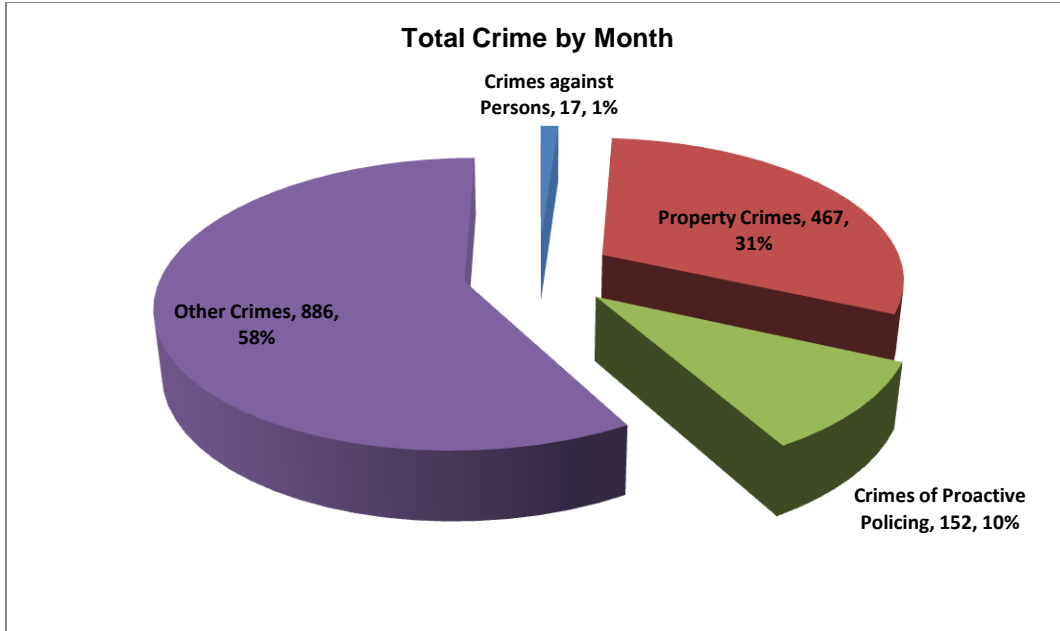
The purpose of the Jonesboro Police Department Monthly Report is to compile data into one integrated report for review, allowing for a seamless flow of information for better decision-making. After each department collates their monthly numbers and sends it to Crime Analysis, it is organized into sections of departmental data, analyzed and packaged, and finally disseminated to department heads, the Chief of Police, the City Mayor, and the City Council. Major sections include Crime Analysis, Emergency 911, Uniform Police Division, Prowl, Criminal Investigative Division, Warrants, Drug Task Force, Traffic, Parking Enforcement, Animal Control, Fleet Maintenance, Records, and Professional Standards.

Crime Analysis

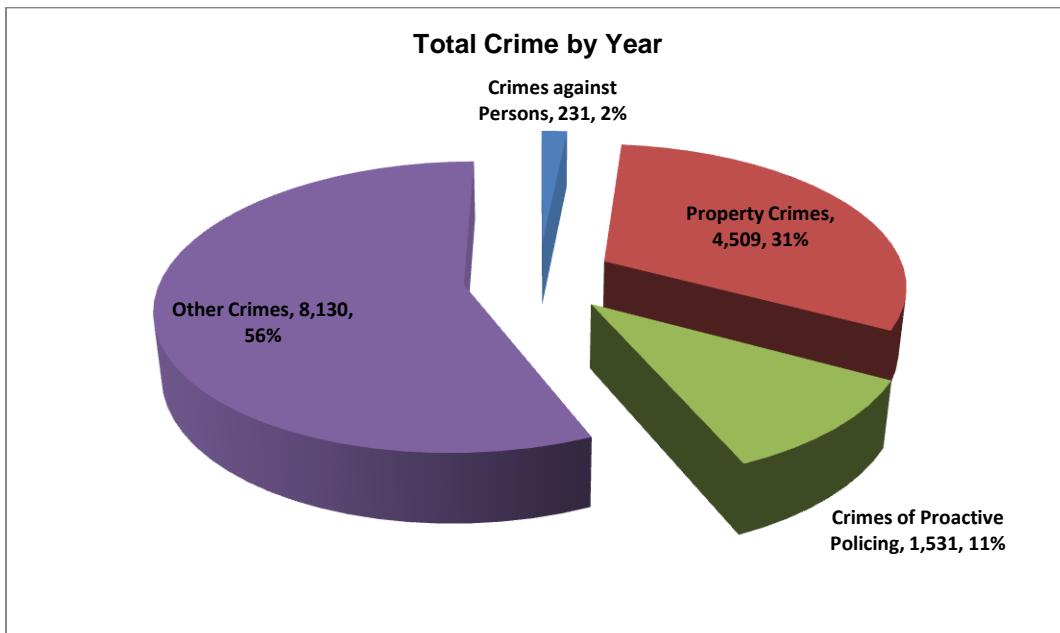
The Crime Analysis division consists of a Crime Analyst and a Crime Analyst Assistant. The Crime Analyst position is responsible for the analysis and dissemination of crime activity data and the collection and maintenance of crime intelligence information for the city of Jonesboro. Additionally, the Crime Analyst is charged with providing the department with current and accurate crime maps, presenting crime activity data to audiences of interest, and responding to requests for crime data from civilians and departmental staff. Data exported from this division is used by field agents for more effective, efficient policing, administration for improved staffing decisions, and the Mayor's office for community decision making and enhanced public relations. This section is broken down into total crime, crimes against persons, property crimes, crimes of proactive policing, other crimes, and arrest demographics.

Total Crime

The crime activity for this month is at a total of 1,522 offenses, up from 1,503 offenses last September, a 1% increase. Other Crimes absorb the majority of this month's crime activity at 58% ($n = 886$). Property crimes fall in second place with 31% ($n = 467$). Following in third and fourth places are crimes of proactive policing at 10% ($n = 152$) and crimes against persons with only 1% ($n = 17$).

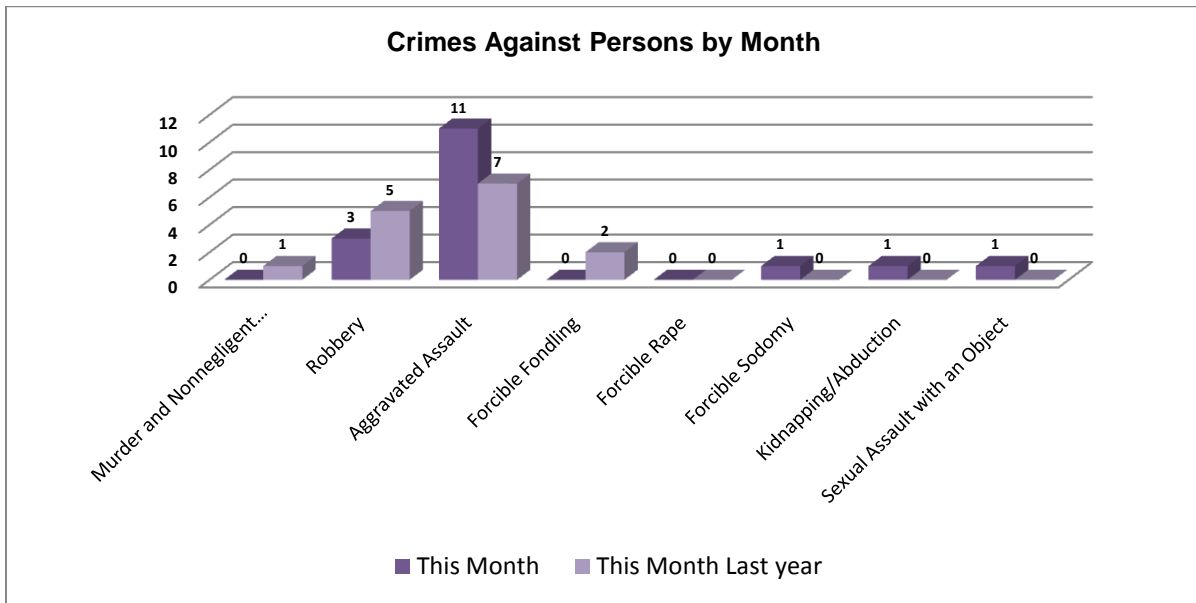


Year to date data includes January through September, of which there is a total of 14,401 offenses, up from 11,928 last September, a 21% increase. Again, other crimes has the highest percentage to total crimes at 56% ($n = 8,130$). Similar to this month's data, property crimes take second place at 31% ($n = 4,509$). Following are the crimes of proactive policing at 11% ($n = 1,531$) and crimes against persons at 2% ($n = 231$).

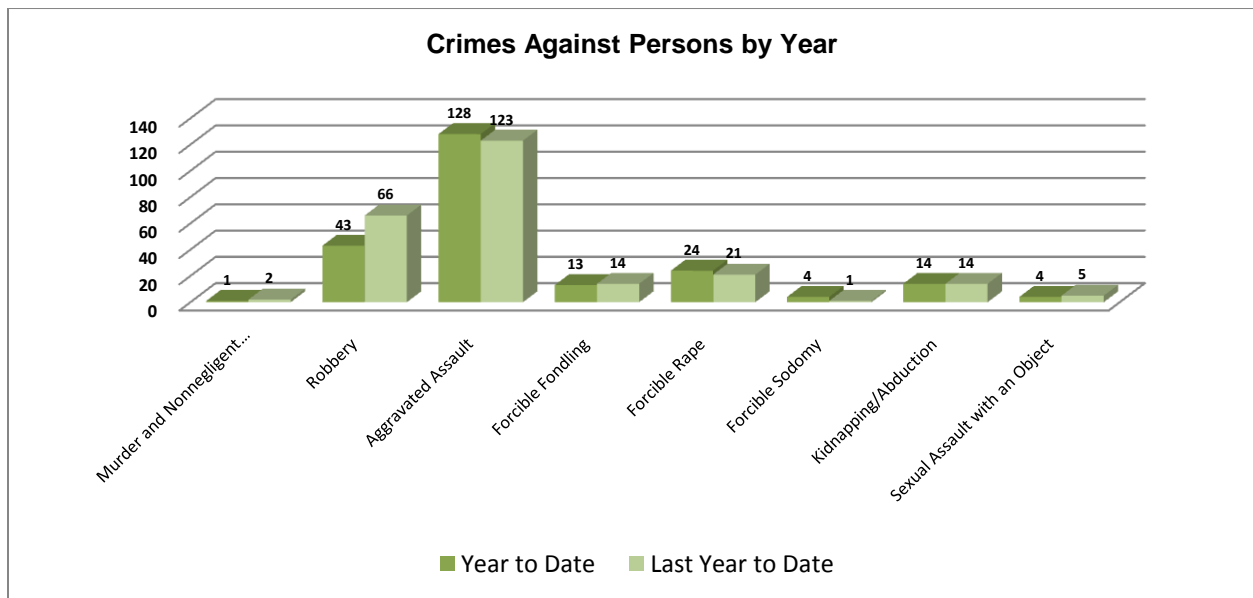


Crimes against Persons

There are 8 crimes that make up this section. There were a total of 17 offenses in this area this month, up from 15 last September, a 13% increase. The following chart demonstrates this month's activity compared to September of last year's activity in all 8 areas. The robberies are lower, down to 3 from 5, a 40% decrease. Significantly higher are the aggravated assaults, up 57%.



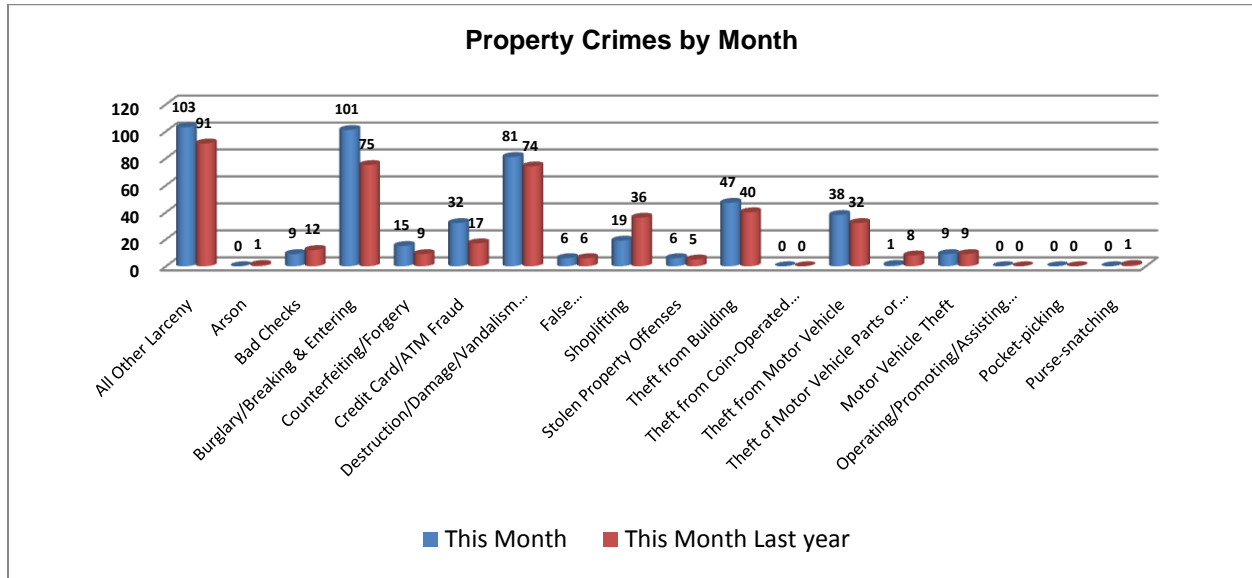
Below is a bar graph indicating the year to date data for crimes against persons. Total number of year to date crimes against persons is 231, down from 246 last September, a 6% decrease. Robberies are down 35% from this time last year.



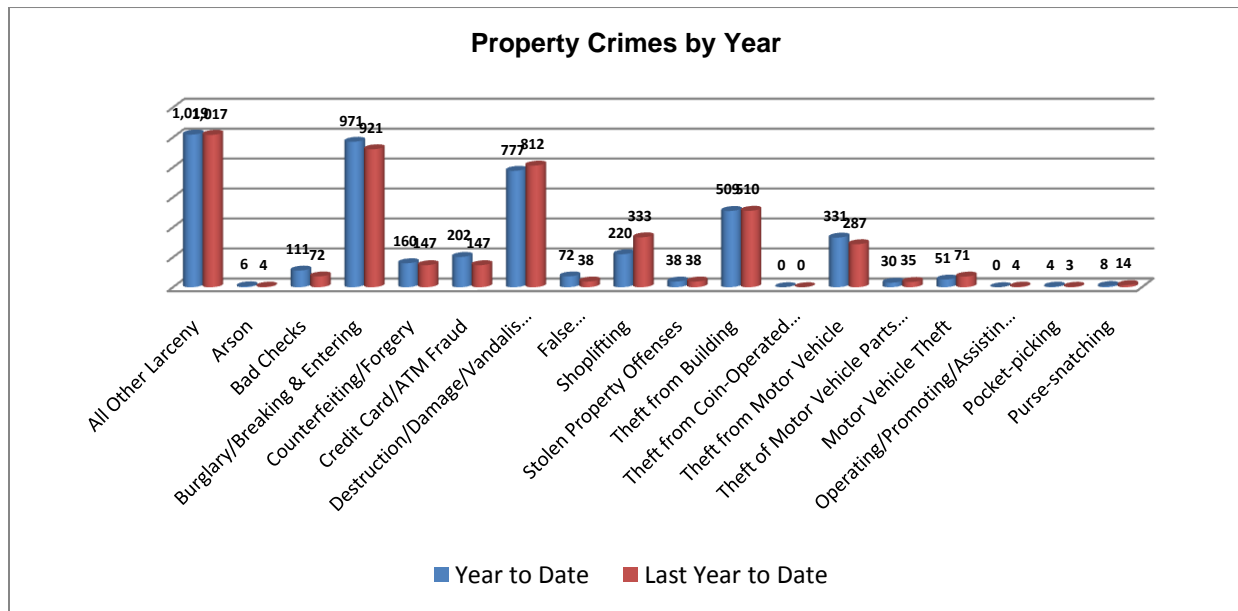
*Arkansas State University had 1 murder on campus in April, but this statistic is reported by ASU and not the City of Jonesboro.

Property Crimes

This section displays the criminal activity for 18 crimes, all against property. This month, there were a total of 467 property crimes, a 12% increase from 416 last September. Shoplifting is down 47% from last September, while burglary and all other larceny are up; burglary indicates an increase by 35% and all other larceny increased by 13%. Significant is a change in credit card/ATM fraud, up from 17 to 32, an 88% increase.

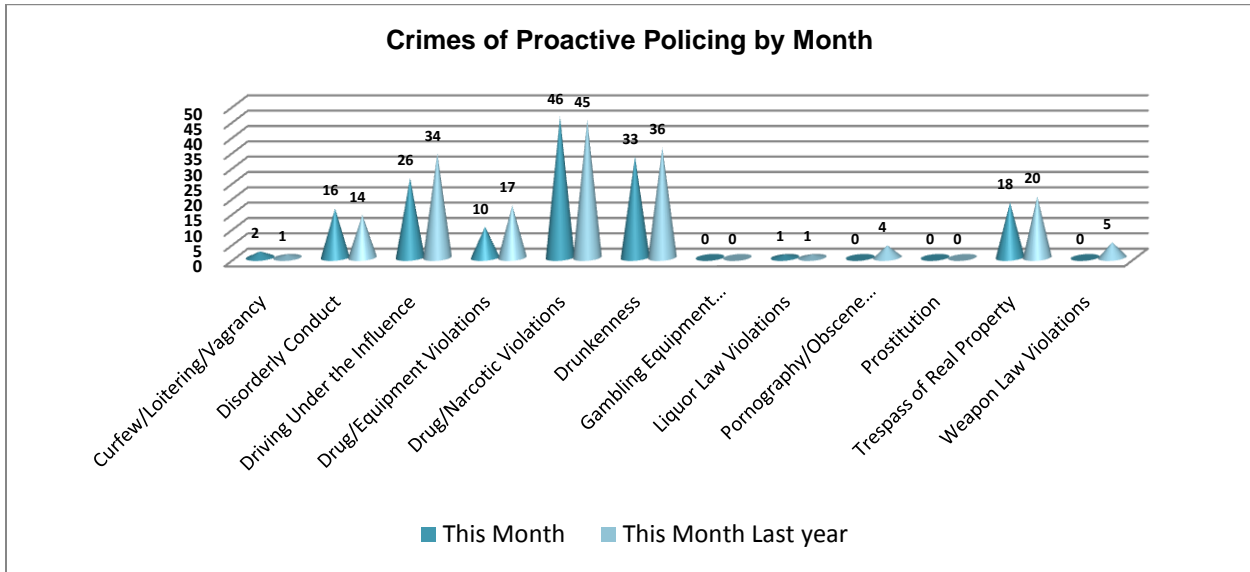


To date this year, 4,509 property offenses have occurred, up from 4,453 last year at this same time, which is virtually no significant change. While shoplifting is down 47%, credit card/ATM fraud is up 37% and bad checks are up 54%.

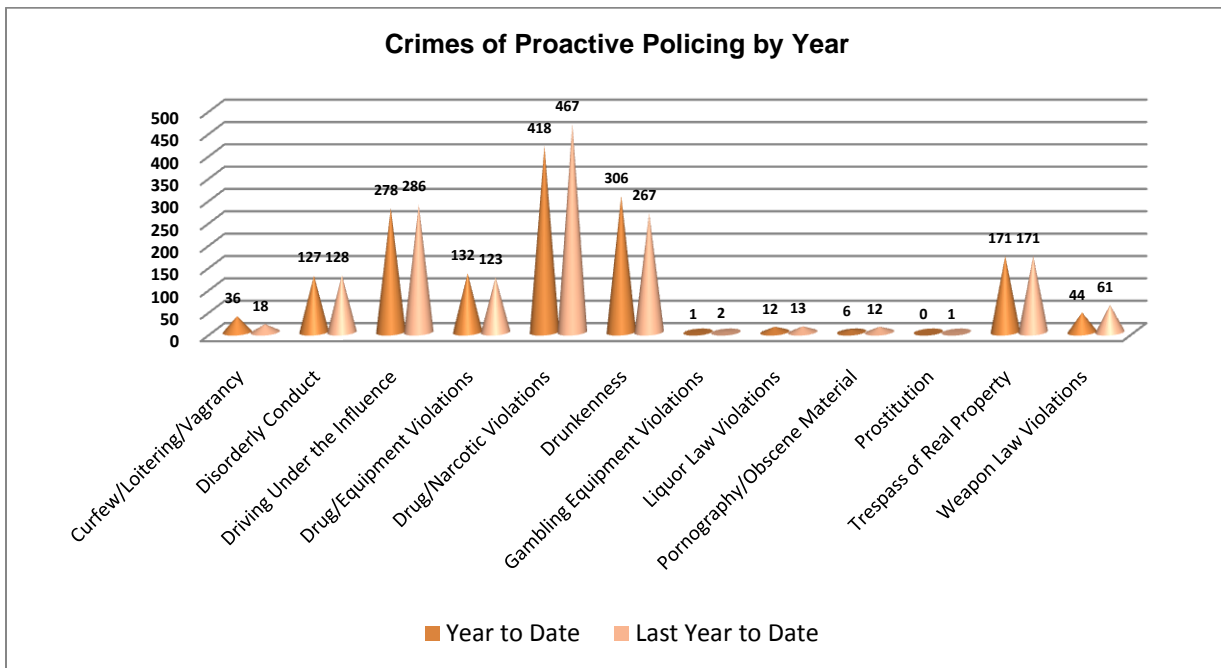


Crimes of Proactive Policing

Crimes of proactive policing are those crimes that result from police officers actively policing the streets to combat certain types of street crime. Twelve crimes fall under this category. A total of 152 offenses have occurred this month, a 14% decrease from last September ($n = 177$). Significant changes this month include a drop in weapon law violations, 100% down, and drug/equipment violations, 41% down. DUI offenses are down 24%.

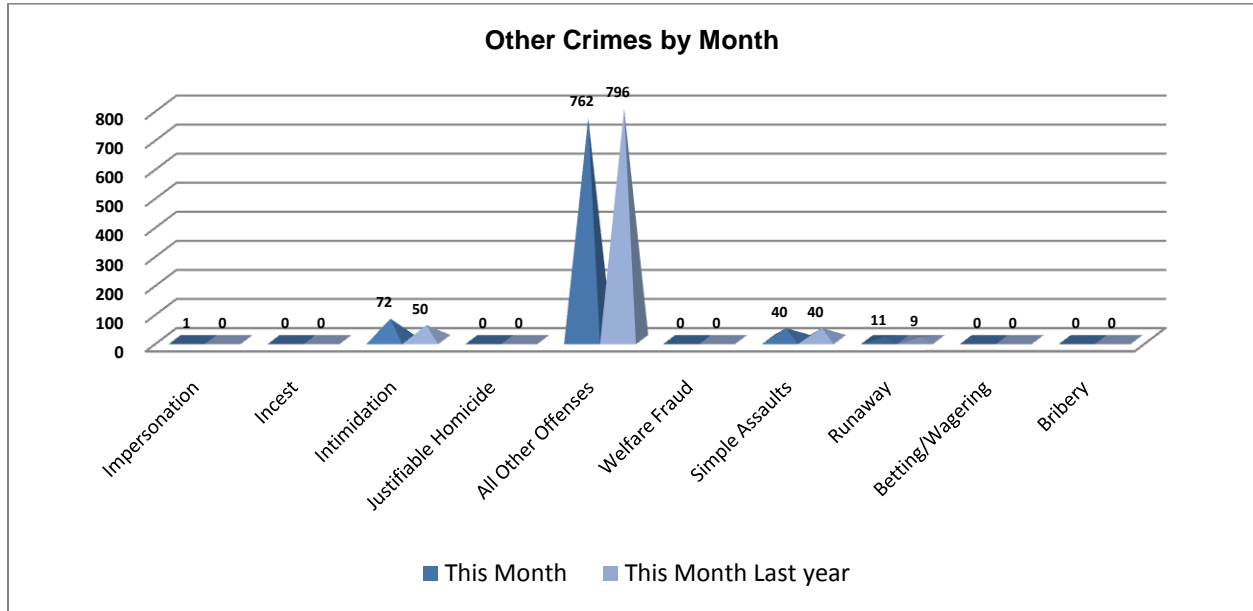


To date for the year, there have been 1,531 crimes of proactive policing, down from 1,549 this time last year. Drug/narcotic violations are down 10%. Drunkenness is up 15%.

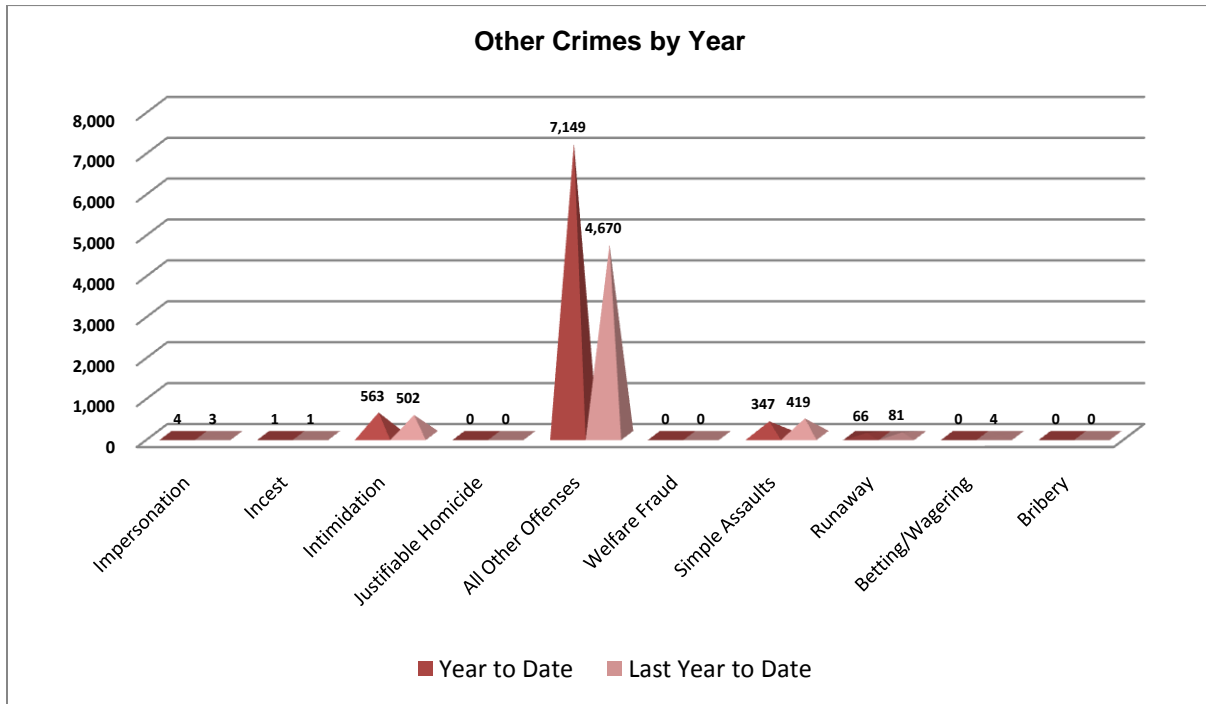


Other Crimes

There are 10 crimes that fall into the other crimes category. This month, there have been a total of 886 other crimes down from 895 last September, a 1% decrease. Significantly higher than last September are intimidations, up 44%. All other offenses are down 4%.

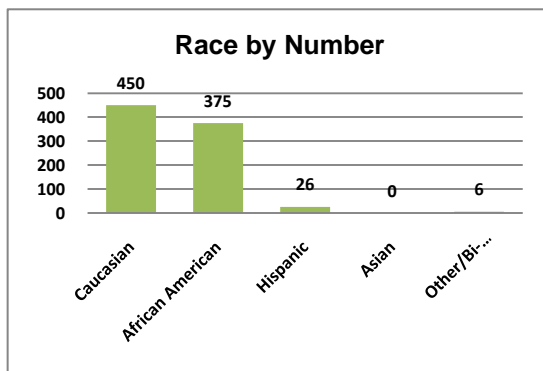
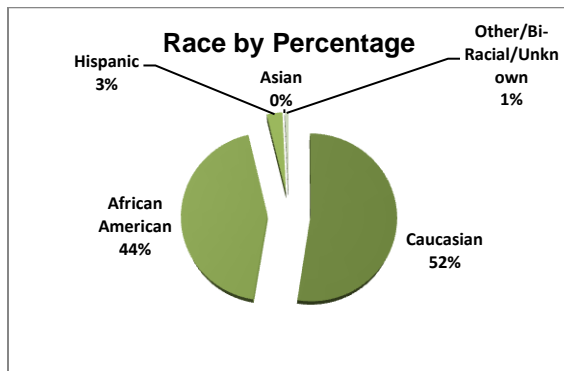
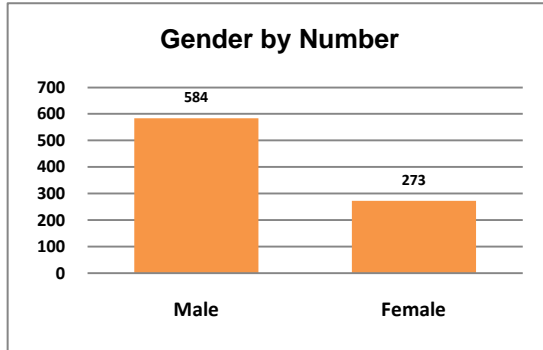
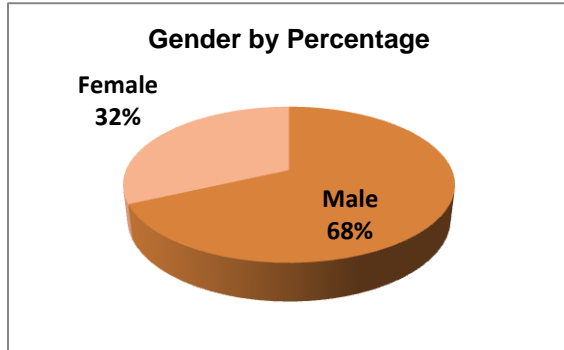


To date this year, there have been 8,130 other crimes, up from 5,680 last September, a 43% increase. Similar to above, intimidations are up 12% and all other offenses are up by 53%.

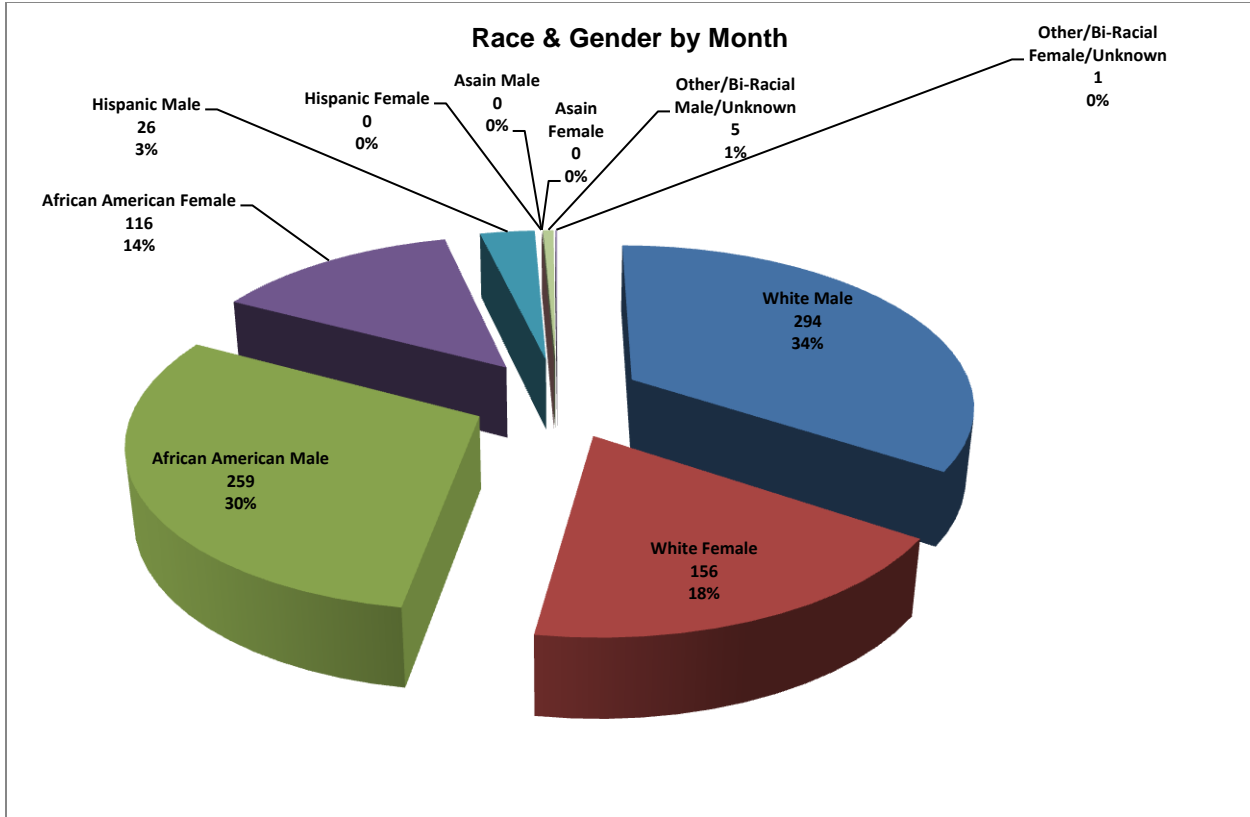


Arrest Demographics

This section will break down race and gender for the 857 arrests this month. The majority of offenders have been male ($n=584$), as opposed to female ($n=273$) and Caucasian ($n=450$) and African American ($n=375$) as opposed to Hispanic ($n=26$), Asian ($n=0$), or other/unknown/bi-racial ($n=6$).



Caucasian males make up the majority of offenders for the month of September, totaling 34% ($n = 294$). African American males account for 30% ($n = 259$) of the offenders this month. Caucasian females make up 18% ($n = 156$) and African American females make up 14% ($n = 116$). The remaining 4% is made up of Hispanic males (3%) and other/bi-racial males (1%). This distribution can be reviewed in the pie chart below (see page 9).



*Although the chart indicates a 0% for other/bi-racial female (n=1), the percentage is so small that excel rounds it to 0%.

Emergency 911

Also known as Public Safety Answering Point (PSAP), the Emergency 911 Division is responsible for answering all calls from public for emergency assistance, accessing the needed information to best assist, and then assigning the most efficient and effective emergency response. In addition, this division is responsible for setting priority call dispatching to field units including Police, Fire, and EMS. Emergency 911 also maintains all records for radio logs, calls for service, and other emergency service data collections.

Calls by Type	This Month	This Month Last Year	YTD	Last YTD	Change By Month	Change YTD
Land Line	859	828	7,955	8,933	4%	-11%
Cell Phone	3,351	3,184	30,253	30,954	5%	-2%
Admin Lines	15,775	16,012	140,062	152,774	-1%	-8%
TOTALS	19,985	20,024	178,270	192,661	0%	-7%

Calls by Agency	This Month	This Month Last Year	YTD	Last YTD	Change By Month	Change YTD
Jonesboro PD Calls	6,149	5,433	55,334	65,071	13%	-15%
Craighead Cty Sheriff	1,051	1,102	9,508	11,584	-5%	-18%
Jonesboro Fire Dpt - dispatch	218	174	1,444	1,502	25%	-4%
Jonesboro Fire Dpt - Med Asst	123	128	1,052	1,835	-4%	-43%
Craighead Cty - Fire	77	31	533	527	148%	1%
Craighead Cty - 1st Responder	88	86	663	715	2%	-7%
Emerson Ambulance	243	243	2,204	2,020	0%	9%
Medic One	289	309	2,627	2,679	-6%	-2%
Air Evac	1	2	10	11	-50%	-9%
Coroner	2	2	23	19	0%	21%
ARK State Police	10	9	135	94	11%	44%
Jonesboro Animal Control	73	62	637	242	18%	163%
Wreckers Called	181	177	1,552	1,738	2%	-11%
TOTALS	8,505	7,758	75,722	88,037	10%	-14%

Calls by Municipality	This Month	This Month Last Year	YTD	Last YTD	Change By Month	Change YTD
Bay PD	96	160	957	1379	-40%	-31%
Bono PD	244	214	1775	2048	14%	-13%
Brookland PD	170	225	1832	2213	-24%	-17%
Caraway PD	104	76	922	717	37%	29%
Cash PD	49	126	484	504	-61%	-4%
Egypt PD	38	17	208	229	124%	-9%
Lake City PD	115	98	1103	1009	17%	9%
Monette PD	127	127	1267	1443	0%	-12%
TOTALS	943	1,043	8,548	9,542	-10%	-10%

Uniform Patrol Division

The UPD is responsible for responding to calls into the Emergency – 911 Division by civilians and are normally the first responders. Jonesboro is divided into 6 patrol districts. Officers from UPD are assigned to a district and work the same district every shift. In addition, when a Traffic Officer is not available, a UPD Officer will respond to traffic accidents and assist in directing traffic when necessary.

Incidents	This Month	This Month Last Year	YTD	Last YTD	Change By Month	Change YTD
Street Accidents	137	90	953	1,145	52%	-17%
Private Property Accidents	51	31	453	490	65%	-8%
Traffic Citations	764	562	6,374	5,161	36%	24%
DWI	15	20	183	239	-25%	-23%
Mis. Arrests	1,337	1,493	13,948	11,792	-10%	18%
Felony Arrests	138	114	1,280	1,216	21%	5%
Public Intoxication Arrests	6	6	77	98	0%	-21%
Calls For Service	7,603	6,314	64,340	57,595	20%	12%
Alarms	219	209	2,057	2,041	5%	1%
Parking Citations	0	5	10	27	-100%	-63%
Written Warnings	916	340	7,591	3,900	169%	95%
TOTALS	11,186	9,184	97,266	83,704	22%	16%
Patrol Miles	65,061	54,413	556,313	498,503	20%	12%
Hours Worked	10,358	8,565	88,836	77,447	21%	15%

Prowl

The Prowl unit is a uniformed street crimes unit specializing in criminal patrol, narcotics enforcement, gang investigation, and prostitution activity. The unit conducts directed patrols, investigates citizen complaints of street-level criminal activity, and directly assists the 2nd Judicial Drug Task Force. PROWL also assists any division within the Jonesboro Police Department at any time when needed.

Incidents	This Month	This Month Last Year	YTD	Last YTD	Change By Month	Change YTD
Street Accidents	0	0	0	1	N/C	-100%
Private Property Accidents	0	0	1	0	N/C	N/C
Traffic Citations	28	18	283	194	56%	46%
DWI	0	0	1	1	N/C	0%
Mis. Arrests	112	87	851	984	29%	-14%
Felony Arrests	35	23	256	360	52%	-29%
Drug Arrests	29	27	257	330	7%	-22%
Public Intoxication Arrests	0	0	0	0	N/C	N/C
Calls For Service	66	106	830	606	-38%	37%
Alarms	0	0	0	0	N/C	N/C
Parking Citations	0	0	0	0	N/C	N/C
Written Warnings	20	21	209	181	-5%	15%
Assists	0	0	0	0	N/C	N/C
TOTALS	290	282	2,688	2,657	3%	1%
Value of Drugs Seized	\$15,620	\$1,970	\$68,438	\$132,916	693%	-49%
Value of Assets Seized	1,855	784	57,633	95,608	137%	-40%
Patrol Miles	5,900	4,350	46,100	47,485	36%	-3%

Criminal Investigative Division

The CID is responsible for conducting follow-up investigations into criminal acts reported to the Jonesboro Police Department. The primary goal is to collect and present evidence that conclusively leads to a successful arrest. Additionally, CID is charged with clearing additional crimes, recovering stolen property, preventing additional crimes, and gathering intelligence information.

Investigations	This Month	This Month Last Year	YTD	Last YTD	Change By Month	Change YTD
Criminal Investigations Assigned	85	75	812	873	13%	-7%
Criminal Investigations Closed	86	71	777	740	21%	5%
Cleared by Arrests	48	34	441	384	41%	15%
Unfounded	12	14	78	98	-14%	-20%
Exceptionally Cleared	13	11	129	162	18%	-20%
Filed With Prosecutors Office	6	3	63	38	100%	66%
TOTALS	250	208	2300	2295	20%	0%

Crimes Against Persons	This Month	This Month Last Year	YTD	Last YTD	Change By Month	Change YTD
Criminal Investigations Assigned	15	18	164	199	-17%	-18%
Criminal Investigations Closed	15	19	180	202	-21%	-11%
Cleared by Arrests	10	11	120	125	-9%	-4%
Unfounded	1	4	7	24	-75%	-71%
Exceptionally Cleared	3	2	38	46	50%	-17%
Filed With Prosecutors Office	1	2	15	7	-50%	114%
TOTALS	45	56	524	603	-20%	-13%

Property Crimes	This Month	This Month Last Year	YTD	Last YTD	Change By Month	Change YTD
Criminal Investigations Assigned	62	38	571	575	63%	-1%
Criminal Investigations Closed	58	38	471	429	53%	10%
Cleared by Arrests	36	22	294	243	64%	21%
Unfounded	9	6	55	61	50%	-10%
Exceptionally Cleared	9	9	84	102	0%	-18%
Filed With Prosecutors Office	4	1	38	23	300%	65%
TOTALS	178	114	1513	1433	56%	6%

Crimes Against Children	This Month	This Month Last Year	YTD	Last YTD	Change By Month	Change YTD
Criminal Investigations Assigned	6	12	51	50	-50%	2%
Criminal Investigations Closed	6	5	60	44	20%	36%
Cleared by Arrests	2	1	27	13	100%	108%
Unfounded	2	4	16	14	-50%	14%
Exceptionally Cleared	1	0	7	7	N/C	0%
Filed With Prosecutors Office	1	0	2	0	N/C	N/C
TOTALS	18	22	163	128	-18%	27%

Warrants

The Warrants Division is responsible for serving warrants, criminal summonses, and subpoenas that are issued by the District Court. On city court days, the Warrants Division provides a bailiff for court and a transport officer. In addition, this Division is responsible for transporting wanted persons arrested in other jurisdictions back to Jonesboro. The STEP program operates within this division and is a grant-funded operation in which officers can get paid overtime to enforce the safety belt law.

Arrests	This Month	This Month Last Year	YTD	Last YTD	Change By Month	Change YTD
Misdemeanor	1460	710	10487	6617	106%	58%
Felony			6	10	N/C	-40%
Total Arrests	1460	710	10493	6627	106%	58%

Warrants by Activity	This Month	This Month Last Year	YTD	Last YTD	Change By Month	Change YTD
Subpoenas	387	283	3585	4364	37%	-18%
Commitments	1	5	35	33	-80%	6%
Traffic Citations			16		N/C	N/C
Complaints		2			-100%	N/C
Assist				1	N/C	-100%
Alarms				1	N/C	-100%

Hours by Activity	This Month	This Month Last Year	YTD	Last YTD	Change By Month	Change YTD
SI Criminal	325.5	181.42	1968.87	1395.03	79%	41%
Court	124.75	87.83	1141.08	724.75	42%	57%
Prisoner Transport	27.5	14.83	273.67	785	85%	-65%

Hours Worked	This Month	This Month Last Year	YTD	Last YTD	Change By Month	Change YTD
Regular Hours Worked	782	484	5757.5	4864.5	62%	18%
Overtime Hours Worked	8.25	11.75	54.5	123.5	-30%	-56%
TOTAL Hours Worked	790.25	495.75	5812	4988	59%	17%

Mileage	This Month	This Month Last Year	YTD	Last YTD	Change By Month	Change YTD
Total Mileage	3893	2051	27713	21626	90%	28%

STEP	This Month	This Month Last Year	YTD	Last YTD	Change By Month	Change YTD
DWI Arrest	5		10		N/C	N/C
DUI Arrest					N/C	N/C
Traffic Citations	61	34	1279	1053	79%	21%
Felony Arrests		1	2	1	-100%	100%
Drug Arrests				1	N/C	-100%
Hours Worked	54	35.5	1029	961.75	52%	7%
Miles Driven	391	316	7950	8127	24%	-2%

Drug Task Force

The DTF is responsible for investigating major drug traffickers in the area, including all types of illegal drugs. They work closely with local, state, and federal agencies to eradicate drugs from the community.

INVESTIGATIONS	This Month	This Month Last Year	YTD	Last YTD	Change By Month	Change YTD
Opened	24	19	255	261	26%	-2%
Closed	21	22	223	243	-5%	-8%
TOTAL	28	17	293	295	65%	-1%

With Nexus to Jonesboro	This Month	This Month Last Year	YTD	Last YTD	Change By Month	Change YTD
Opened	26	21	227	278	24%	-18%
Closed		0		0	N/C	N/C
TOTAL	26	21	227	278	24%	-18%

Outside Jonesboro (No Known Nexus)	This Month	This Month Last Year	YTD	Last YTD	Change By Month	Change YTD
Opened	0	3	15	15	-100%	0%
Closed	0	0		0	N/C	N/C
TOTAL	0	3	15	15	-100%	0%

ASSISTANCE RENDERED	This Month	This Month Last Year	YTD	Last YTD	Change By Month	Change YTD
Assist to Outside Agencies	1	2	27	34	-50%	-21%
Assist to Jonesboro UPD/CID	17	8	141	162	113%	-13%

ARRESTS	This Month	This Month Last Year	YTD	Last YTD	Change By Month	Change YTD
Miscellaneous	6	8	54	87	-25%	-38%
Felony	22	28	331	310	-21%	7%
Marijuana	9	2	72	57	350%	26%
Cocaine	3	1	16	14	200%	14%
Crack Cocaine	4	4	39	47	0%	-17%
Methamphetamine/ICE	4	8	81	62	-50%	31%
LSD	0	0	0	0	N/C	N/C
Ecstasy (MDMA or Other Designer Drug)	0	0	5	7	N/C	-29%
Prescription	1	4	18	31	-75%	-42%
Opiates (Heroin,Opium)	0	0	0	9	N/C	-100%
Labs	0	0	19	23	N/C	-17%
All Other Drug Offenses	0	0	0	1	N/C	-100%

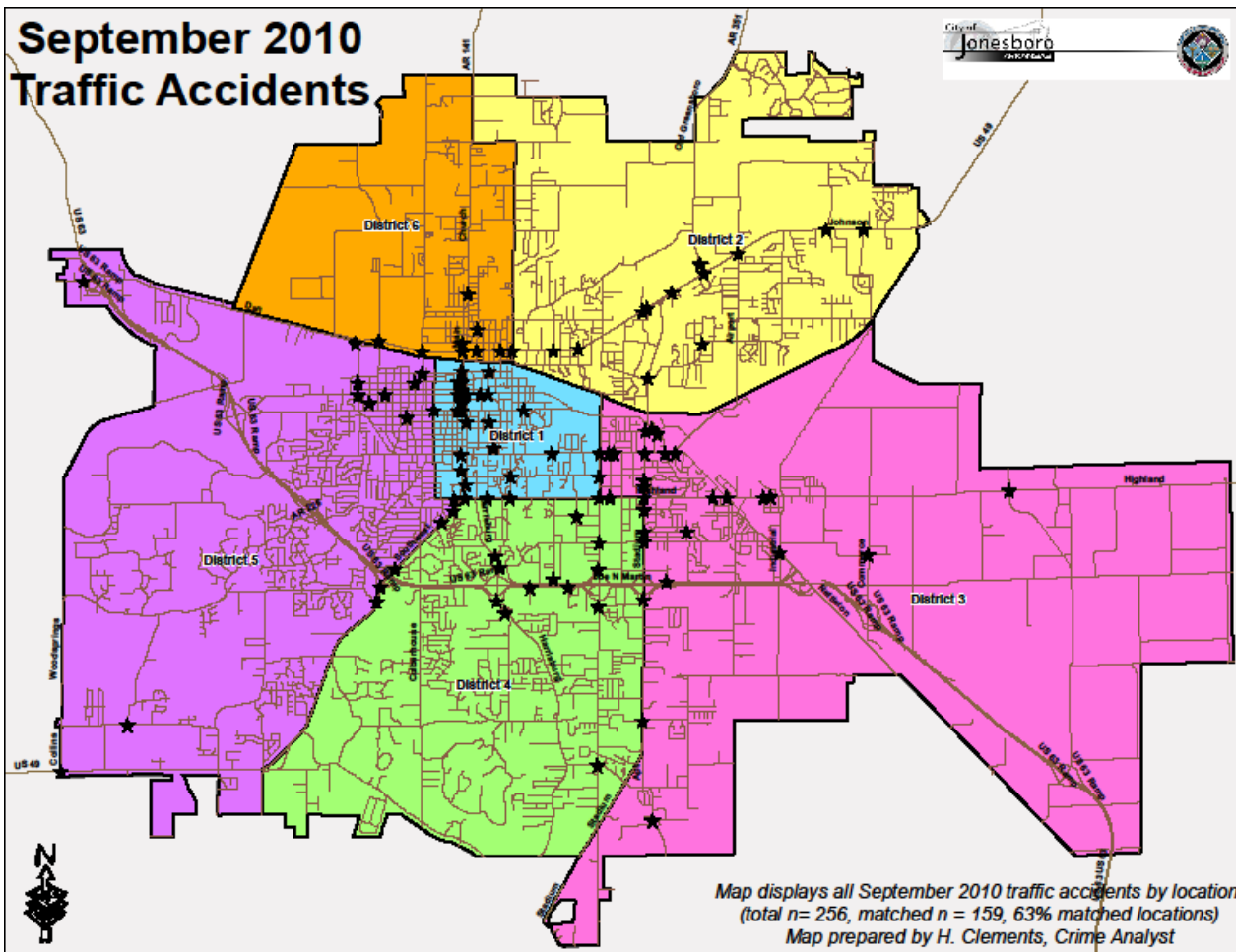
ASSET FORFEITURE	This Month	This Month Last Year	YTD	Last YTD	Change By Month	Change YTD
Vehicles Seized(No.)	0	0	5	5	N/C	0%
Value of Assets Seized(Includes Value of vehicles)	\$300	\$0	\$44,157	\$94,802	N/C	-53%
Asset Value Awarded to Jonesboro PD (State)		\$0	\$0	\$0	N/C	N/C
Asset Value Awarded to Jonesboro PD (Federal)		\$0	\$0	\$0	N/C	N/C
Asset Value Awarded to Jonesboro PD (Total)		\$0	\$0	\$0	N/C	N/C

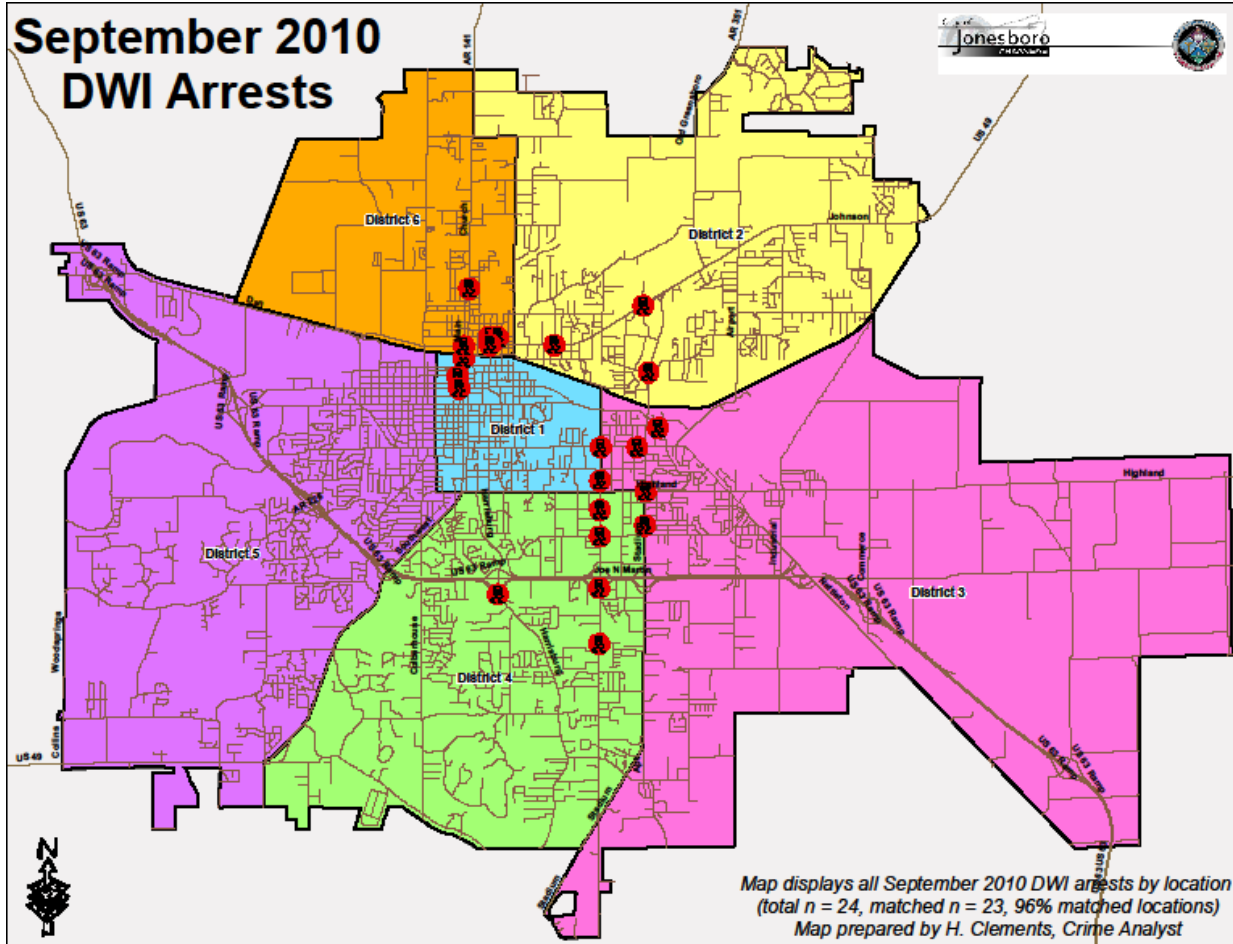
ARRESTS DEMOGRAPHY	This Month	This Month Last Year	YTD	Last YTD	Change By Month	Change YTD
White	7	21	123	153	-67%	-20%
African American	8	16	70	93	-50%	-25%
Latino	3	0	28	17	N/C	65%
Asian	0	0	1	0	N/C	N/C
Other/Bi-Racial	0	0	0	0	N/C	N/C
Male	15	27	168	180	-44%	-7%
Female	3	10	39	58	-70%	-33%
White Male	5	29	93	97	-83%	-4%
White Female	2	11	33	43	-82%	-23%
African American Male	7	14	69	74	-50%	-7%
African American Female	1	2	3	18	-50%	-83%
Latino Male	2	2	23	14	0%	64%
Latino Female	0	0	3	3	N/C	0%
Asian Male	0	0	1	0	N/C	N/C
Asian Female	0	0	0	0	N/C	N/C
Other/Bi-Racial Male	0	0	0	0	N/C	N/C
Other/Bi-Racial Female	0	0	0	0	N/C	N/C

Traffic

Comprised of three motor units and three Chargers, the Traffic Enforcement Unit responds to traffic accidents and provides increased enforcement in particularly challenging areas. This unit also provides extra coverage for specific congestion problems and special events in the community. Last, they work details targeting specific issues, such as DWI enforcement and traffic safety checkpoints.

Incidents	This Month	This Month Last Year	YTD	Last YTD	Change By Month	Change YTD
Street Accidents	119	175	1139	1096	-32%	4%
Private Property Accidents	33	42	336	360	-21%	-7%
Traffic Citations	226	320	2204	2518	-29%	-12%
DWI	2	4	27	27	-50%	0%
Mis. Arrests	47	5	181	220	840%	-18%
Felony Arrests	14	2	36	11	600%	227%
Drug Arrests	0	0	0	0	N/C	N/C
Public Intoxication Arrests	0	0	2	0	N/C	N/C
Calls For Service	275	285	2408	2116	-4%	14%
Alarms	4	0	15	20	N/C	-25%
Parking Citations	0	0	0	26	N/C	-100%
Written Warnings	74	5	955	38	1380%	2413%
TOTALS	794	838	7303	6432	-5%	14%
Value of Asstes Seized	\$0	\$0	\$0	\$0	N/C	N/C
Patrol Miles	4,213	5,854	47,490	47,021	-28%	1%
Hours Worked	655.5	870.5	6987.5	7236	-25%	-3%





Parking Enforcement

The Parking Enforcement Division is responsible for enforcing parking laws in the downtown area. This service provides a safe and convenient parking situation for the public.

CITATIONS ISSUED	This Month	This Month Last Year	YTD	Last YTD	Change By Month	Change YTD
Citations	42	63	438	627	-33%	-30%
Verbal Warnings	0	0	0	0	N/C	N/C

MINUTES BY ACTIVITY	This Month	This Month Last Year	YTD	Last YTD	Change By Month	Change YTD
Office	415	1,005	9,690	14,955	-59%	-35%
Admin(Non-Office)	825	405	8,520	7,245	104%	18%
Community	0	0	0	300	N/C	-100%
Training	0	0	0	0	N/C	N/C
Patrol	4,100	4,380	33,720	43,500	-6%	-22%

Animal Control

The Animal Control Division is responsible for educating the public on safe and humane issues regarding animal treatment, enforcing all animal laws and ordinances, assisting the public in resolving animal issues, and protecting the safety and welfare of the citizens and animals in this community.

Incidents	This Month	This Month Last Year	YTD	Last YTD	Change By Month	Change YTD
Barking Complaints	11	17	66	66	-35%	0%
Bite Reports	10	13	81	89	-23%	-9%
Door Hangers	34	32	278	211	6%	32%
Welfare Checks	87	117	669	566	-26%	18%
Advised of Rights	345	56	2,291	1,878	516%	22%
Incident Reports	4	6	51	61	-33%	-16%
Gone on Arrival	46	84	356	487	-45%	-27%
Complaints	711	862	5,442	5,033	-18%	8%
Desk Complaints	1,136	974	7,732	6,495	17%	19%
Captured Dogs	143	139	1,086	971	3%	12%
Captured Cats	8	25	103	100	-68%	3%
Captured Wildlife	42	49	275	192	-14%	43%
Chemical Captures	8	10	51	71	-20%	-28%
Traps	29	33	179	162	-12%	10%
Deceased Animals	91	69	604	733	32%	-18%
Assist J.P.D.	6	6	59	40	0%	48%
Assist C.S.O.	0	0	2	6	N/C	-67%
Public Relations	593	584	4,710	1,714	2%	175%
CITATIONS ISSUED	87	13	368	198	569%	86%
WARNINGS ISSUED	51	58	338	200	-12%	69%
Physical Arrests	1	0	10	11	N/C	-9%
City Warrants Served	3	0	22	14	N/C	57%
County Warrants Served	0	0	0	0	N/C	N/C
Euthanized	80	87	514	559	-8%	-8%
Euthanized for Humane Society	0	1	0	72	-100%	-100%
Deceased Animals Landfill lbs.	350	4,180	33,440	38,600	-92%	-13%
Wildlife Euthanized	42	49	275	192	-14%	43%
Sent to Rescue Centers	16	5	121	82	220%	48%
Adoptions	33	31	288	180	6%	60%
Miles Driven	8,529	7,908	67,106	76,645	8%	-12%

Fleet Maintenance

The Fleet Maintenance is responsible for all of the police vehicle maintenance upkeep, cleanliness, and purchasing. In addition, this Division handles most of the purchasing of equipment, supplies, and uniforms for all of the Police Department.

Repair Costs by Model Year	This Month	This Month Last Year	YTD	Last YTD	Change By Month	Change YTD
95-99	\$0.00	\$0.00	\$583.68	\$1,155.90	N/C	-50%
2000	\$0.00	\$78.38	\$280.46	\$2,313.05	-100%	-88%
2001	\$11.23	\$0.00	\$323.26	\$427.80	N/C	-24%
2002	\$0.00	\$0.00	\$2,054.11	\$0.00	N/C	N/C
2003	\$0.00	\$0.00	\$577.11	\$535.11	N/C	8%
2004	\$592.48	\$423.35	\$8,229.65	\$5,647.91	40%	46%
2005	\$33.69	\$1,336.35	\$8,223.54	\$6,347.23	-97%	30%
2006	\$2,554.54	\$1,181.22	\$30,178.14	\$13,597.01	116%	122%
2007	\$1,186.99	\$395.18	\$10,651.65	\$3,968.25	200%	168%
2008	\$0.00	\$11.23	\$1,397.19	\$203.44	-100%	587%
2009	\$0.00	\$0.00	\$952.23	\$6,137.91	N/C	N/C
2010	\$0.00	n/a	\$0.00	n/a	N/C	N/C
TOTALS	\$4,378.93	\$3,425.71	\$63,451.02	\$40,333.61	28%	57%

Routine Preventative Maintenance by Model Year	This Month	This Month Last Year	YTD	Last YTD	Change By Month	Change YTD
95-99	\$20.00	\$0.00	\$73.50	\$188.30	N/C	-61%
2000	\$0.00	\$0.00	\$29.00	\$224.30	N/C	-87%
2001	\$0.00	\$0.00	\$60.00	\$1,221.96	N/C	-95%
2002	\$20.00	\$0.00	\$92.50	\$0.00	N/C	N/C
2003	\$40.00	\$20.00	\$965.15	\$933.50	100%	3%
2004	\$830.52	\$124.00	\$4,331.07	\$3,887.92	570%	11%
2005	\$436.89	\$1,146.85	\$4,260.57	\$5,929.51	-62%	-28%
2006	\$2,527.91	\$1,520.03	\$13,907.80	\$12,731.25	66%	9%
2007	\$1,176.55	\$1,719.38	\$9,921.94	\$8,724.95	-32%	14%
2008	\$587.61	\$60.00	\$2,576.38	\$1,130.54	879%	128%
2009	\$1,162.64	\$574.02	\$2,237.89	\$2,912.01	N/C	N/C
2010	\$601.30	n/a	\$1,769.40	n/a	N/C	N/C
TOTALS	\$7,403.42	\$5,164.28	\$40,225.20	\$37,884.24	43%	6%

Records

The Records Division is responsible for providing administrative and clerical support to the department. Major responsibilities include entering the accident and incident reports and tickets into the records database management system, assisting the general public for report requests, performing criminal backgrounds, serving as a switchboard at times, performing validations, and setting up and managing the payment plans out of court.

RECORDS	This Month	This Month Last Year	YTD	Last YTD	Change By Month	Change YTD
Incident/Arrest Reports Processed	1,173	1,234	11,160	9,627	-5%	16%
Accident Reports Processed	258	251	2,067	2,018	3%	2%
Citations Processed	3,880	3,597	36,954	31,362	8%	18%
Warnings Processed	495	256	5,240	2,782	93%	88%
Backgrounds	20	18	173	90	11%	92%
Fingerprints	94	63	765	833	49%	-8%
Photos	0	0	15	20	N/C	-25%
Accident Requests	133	108	978	1,052	23%	-7%
Accident Requests Online	169	186	1,441	1,431	-9%	1%
TOTALS	6,222	5,713	58,793	49,215	9%	19%

Professional Standards

The Office of Professional Standards, a unit within Administration, is charged with the compilation and updating of an extensive set of policies and procedures and providing a general

operations guideline and code of conduct for officers to follow. In the event that a member of the public does experience a negative interaction with an officer, mechanisms are in place for them to lodge a complaint. All complaints are reviewed and investigations completed in a timely manner.

	This Month	This Month Last Year	YTD	Last YTD	Change By Month	Change YTD
Opened (TOTAL)	4	5	51	66	-20%	-23%
Closed	4	5	51	66	-20%	-23%
Inquiries	4	4	49	61	0%	-20%
Formal Investigations	0	1	2	5	-100%	-60%
Sustained	3	3	40	45	0%	-11%
Not-Sustained	0	1	3	5	-100%	-40%
Exhonerated	0	1	2	7	-100%	-71%
Unfounded	1	0	6	9	N/C	-33%