

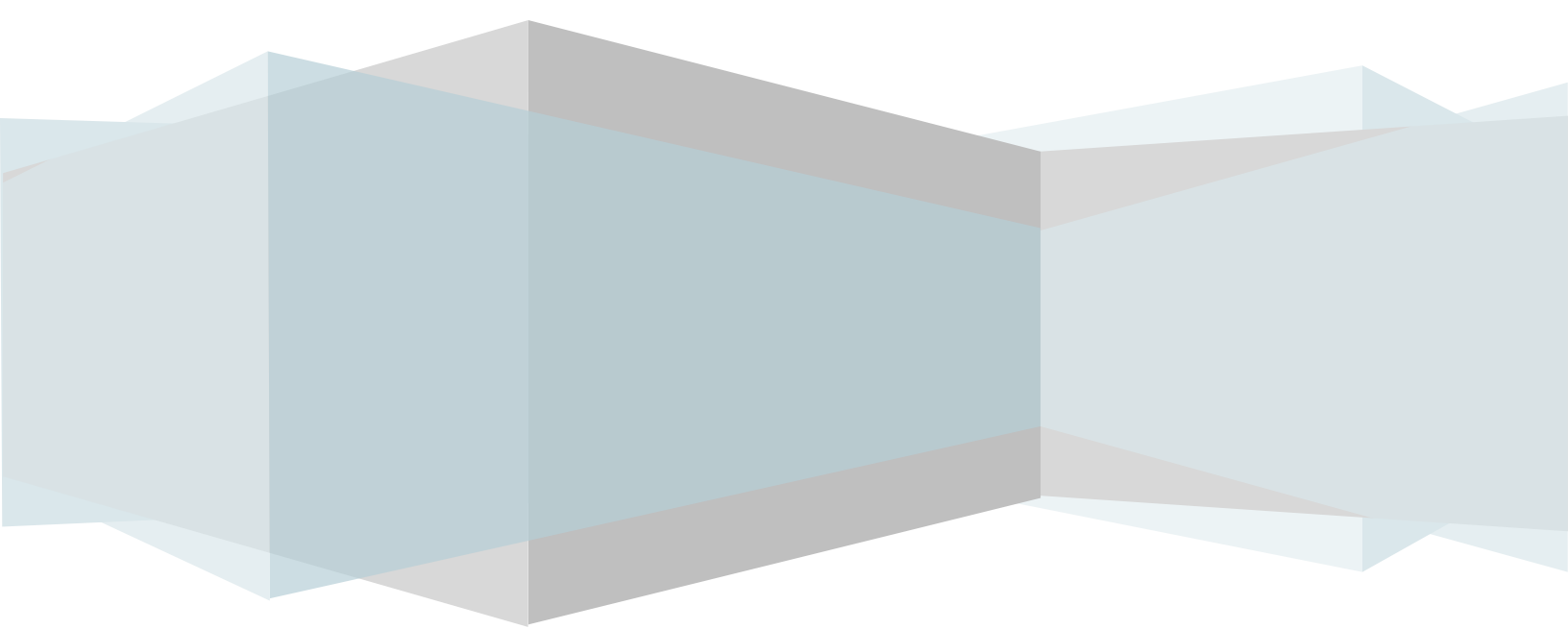
Jonesboro Police Department



Monthly Report

October 2011

Basia Combs, Crime Analyst



EXECUTIVE SUMMARY

The purpose of the Jonesboro Police Department Monthly Report is to compile data into one integrated report for review, allowing for a seamless flow of information for better decision-making. After each department collates their monthly numbers and sends it to the Office of Crime Analysis, it is organized into sections of departmental data, analyzed and packaged, and finally disseminated to department heads, the Chief of Police, the City Mayor, and the City Council. Major sections include Crime Analysis, Emergency 911, Uniform Police Division, Prowl, Criminal Investigative Division, Warrants, Drug Task Force, Traffic, Parking Enforcement, Animal Control, Fleet Maintenance, Records, and Professional Standards.

CRIME ANALYSIS

The Crime Analysis division consists of one Crime Analyst and one part-time Crime Analyst Assistant. The Crime Analyst position is responsible for the analysis and dissemination of crime activity data and the collection and maintenance of crime intelligence information for the city of Jonesboro. Additionally, the Crime Analyst is charged with providing the department with current and accurate crime maps, presenting crime activity data to audiences of interest, and responding to

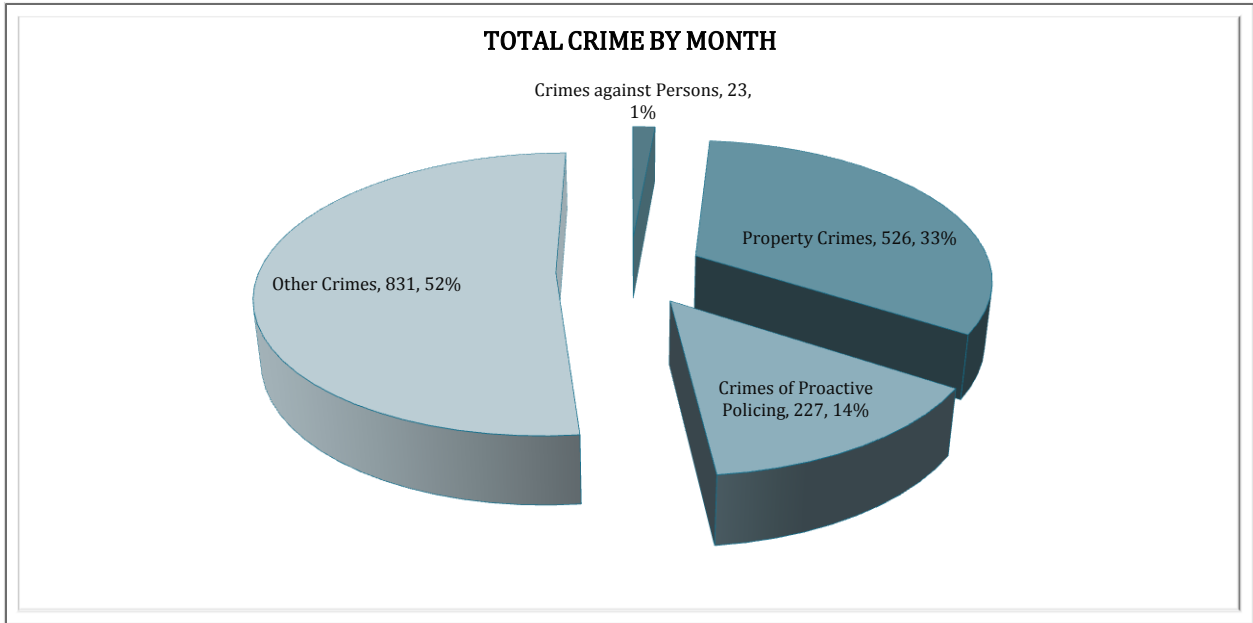
requests for crime data from civilians and departmental staff. Data exported from this division is used by field agents for more effective, efficient policing, administration for improved staffing decisions, and the Mayor's office for community decision making and enhanced public relations. The following section is broken down into Total Crime, Crimes against Persons, Property Crimes, Crimes of Proactive Policing, Other Crimes, and Arrest Demographics.

TOTAL CRIME

The crime activity for the month of October 2011 is at a total of 1,607 offenses, a 5% increase from 1,529 offenses in October 2010. With Jonesboro population equal to 67,263, the crime rate is at 23.9 crimes per 1,000 population for the month of October this year, compared to the 23.7 crimes per 1,000 population last year, an insignificant 1% increase*.

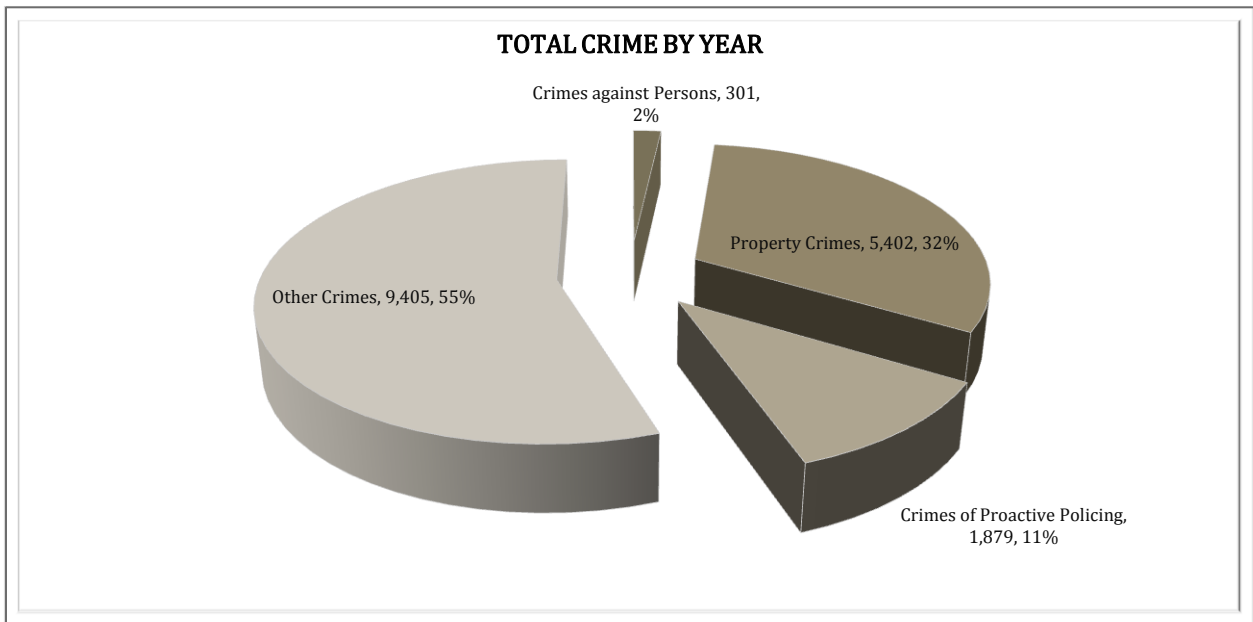
As indicated on a pie chart on the following page, Other Crimes absorb the majority, 52%, of this month's crime activity ($n = 831$). Property crimes fall into a second place and comprise of 33% of all the crimes ($n = 526$). Following in third and fourth places are crimes of proactive policing at 14% ($n = 227$) and crimes against persons at 1% ($n = 23$).

* Note: 2010 numbers are based on 2010 population estimate, $n = 64,374$.



Year to date data includes number of crimes from January through October of this year, of which there is a total of 16,987 offenses, up from 16,025 offenses that occurred January through October of last year, a 6% increase. The year to date crime rate is 253 per 1,000 population, a 1% from last year to date crime rate.

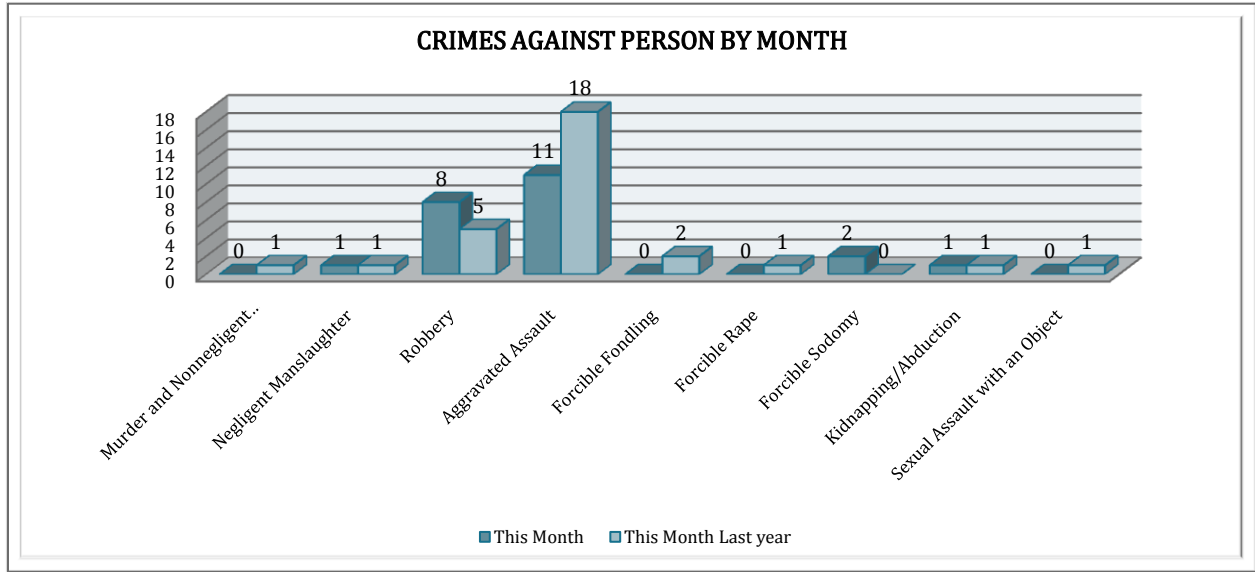
Other Crimes have the highest percentage of total crimes and are at 55% ($n = 9,405$). Property Crimes comprise of 32% of total crimes to date where $n = 5,402$. Crimes of Proactive Policing amount to 11% ($n = 1,879$) and crimes against persons comprise of 2% of total year to date number of crimes ($n = 301$).



CRIMES AGAINST PERSONS

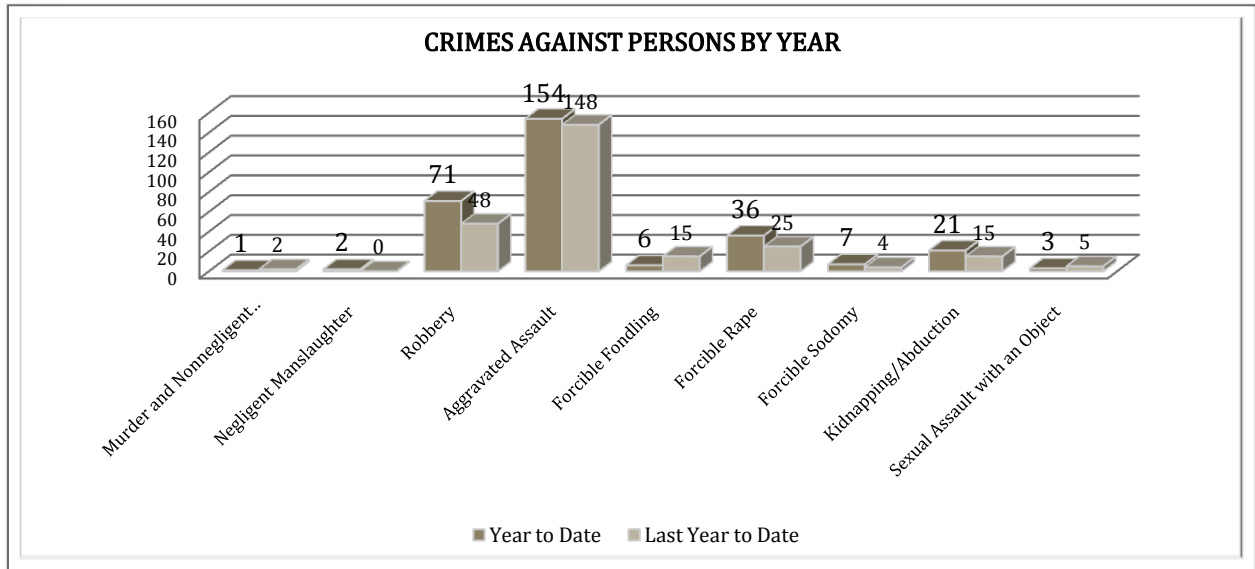
There are 9 crimes that make up this section. There were a total of 23 offenses in this area this month, a 23% decrease, comparing to the last year's total in October. This decrease is mainly due to

the decrease of Aggravated Assault, -39%. As demonstrated on the following chart, there are no significant changes in other crimes for this category.



Bellows bar graph shows the year to date data for Crimes against Persons, which amounts to a total of 301 crimes for this category of crimes, a 15% increase, comparing to the year to date data of last

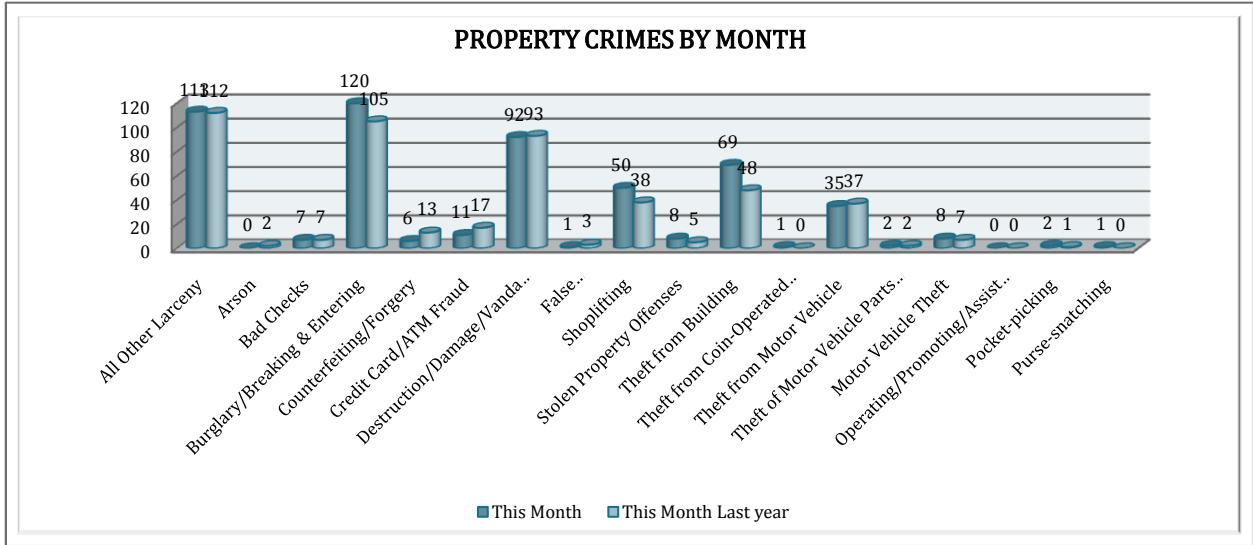
year. This increase is mainly due to the increase in a total number of Robberies, 48% up, Forcible Rape, 44% up to date this year.



PROPERTY CRIMES

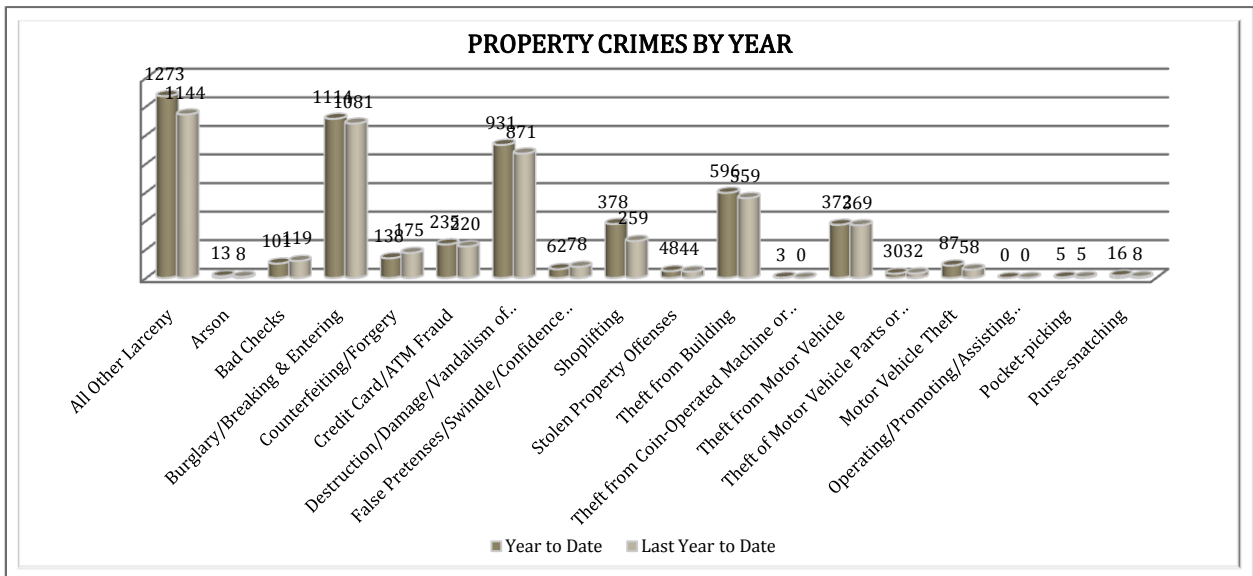
This section displays the criminal activity for 18 crimes, all against property. This month, there were a total of 526 Property Crimes, a 7% increase comparing to October of the last year. The data indicates a significant change in

Counterfeiting / Forgery, 54% down, and in Credit Card/ATM Fraud, 35% down. Burglary/Breaking and Entering is up by 14%, Theft from Building is up by 44%, and Shoplifting is up by 32%.



To date this year, 5,402 property offenses have occurred, a 7% increase compared to last year's data at this same time. There is a 15% decrease in Bad Checks, 21% decrease in Counterfeiting/Forgery, and 21% decrease in False Pretenses/Swindle/

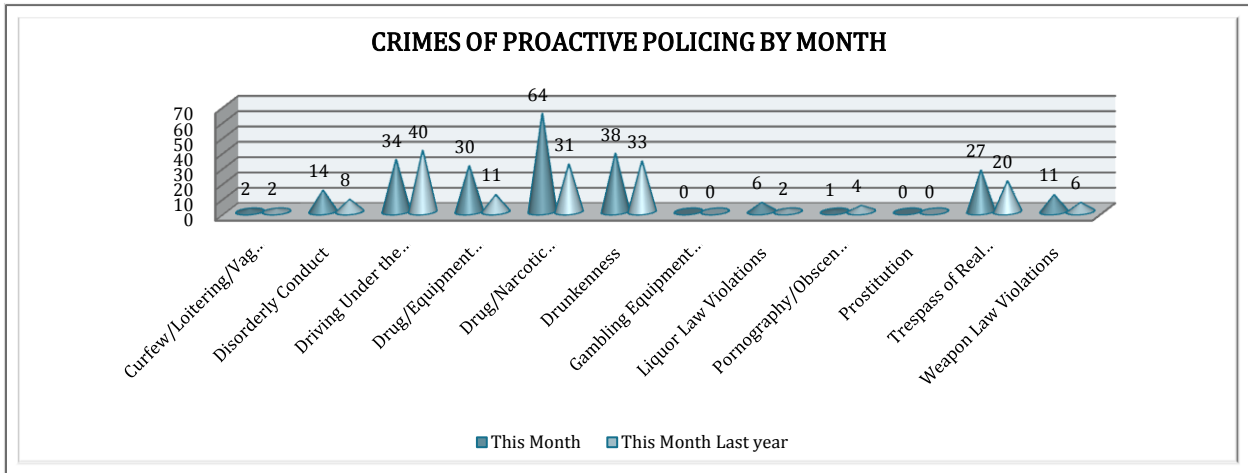
Confidence Game. Comparing to last year's to date frequencies of offenses in this category, All Other Larceny increased by 11%, Motor Vehicle Theft increased by 50%, Shoplifting increased by 46%, and Arson by 63%.



CRIMES OF PROACTIVE POLICING

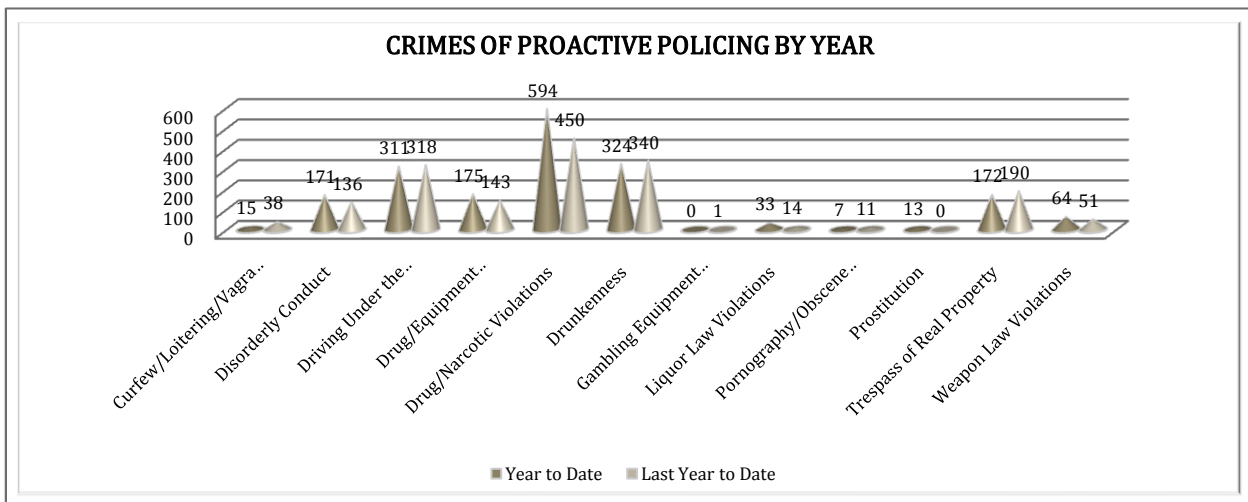
Crimes of Proactive Policing are those crimes that result from police officers actively policing the streets to combat certain types of street crime. As chart below indicates, twelve crimes fall under this category. A total of 227 offenses have occurred this month, a 45% increase, comparing to October of the last year. There is an evident increase in

Drug/Narcotic Violations, 106% up, and in Drug/Equipment Violations, 173% up. Other increases include an 83% change in Weapon Law Violations, a 75% change in Disorderly Conduct, a 35% change in Trespass of Real Property, and a 15% change in Drunkenness. Driving under Influence is down, a 15% decrease.



To date for the year 2011, there have been 1,879 crimes of proactive policing, up 11% from last year's to date offenses. Liquor Law Violations increased by 136%, Disorderly Conduct Offenses are up by 26%, Drug/Narcotic Violations increased by

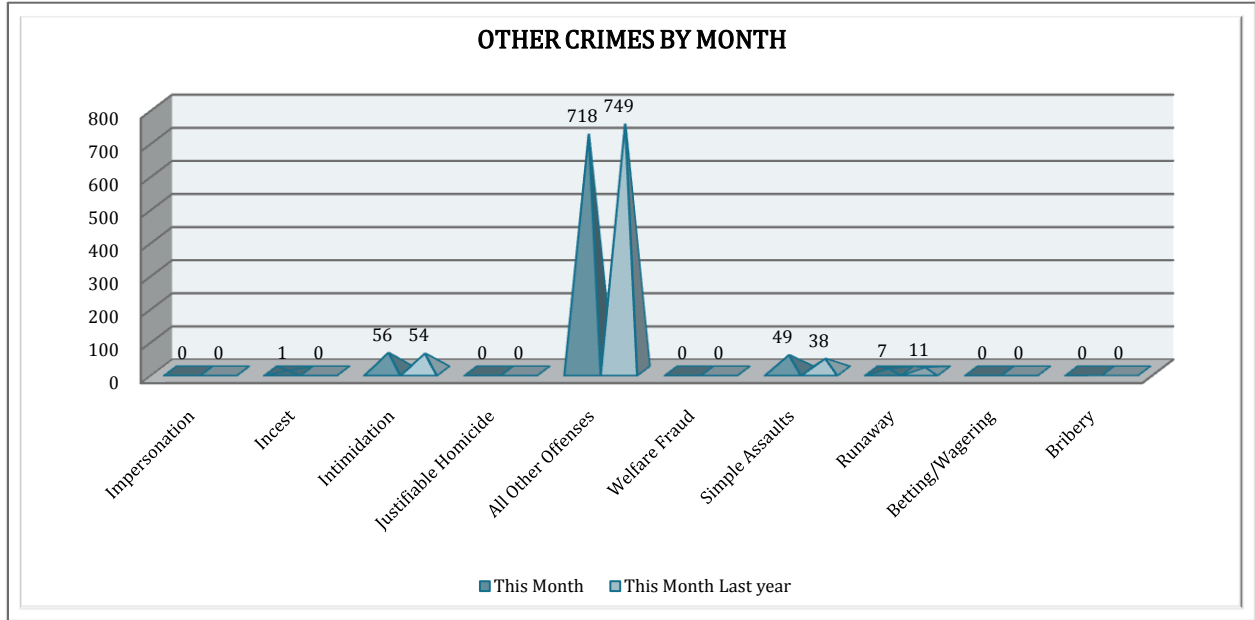
32%, Weapon Law Violations increased by 25%, and Drug/Equipment Violations increased by 22%. There is an overall 5% drop in Drunkenness, a 9% drop in Trespass of Real Property, and 61% drop in Curfew/Loitering/Vagrancy offences.



OTHER CRIMES

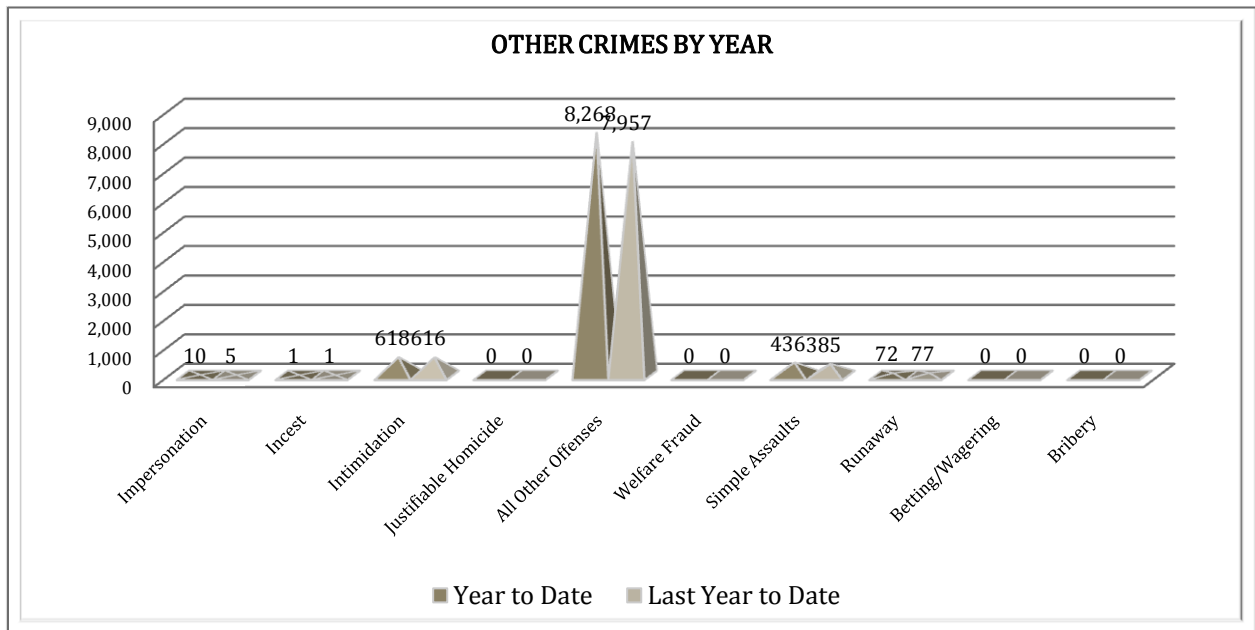
There are 10 crimes that fall into the Other Crimes category. This month, there have been a total of 831 Other Crimes, down from 852 in October of the last

year, a 2% decrease. Runaway offences are 36% down and All Other Offenses within Other Crimes categories decreased by 4%. Simple assault increased by 29%.



To date this year, there have been 9,405 Other Crimes offenses, up from 9,041 as of last year's to date offenses, a 4% increase.

Simple Assaults are up 13% and All Other Offenses within the Other Crimes category are up 4%, compared to last year's data.

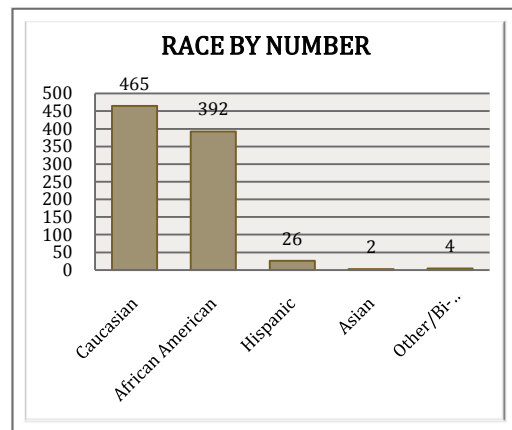
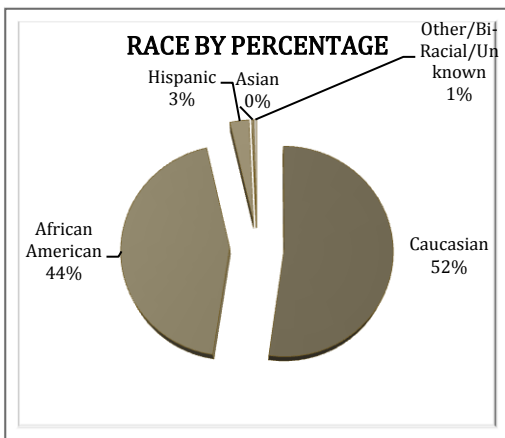
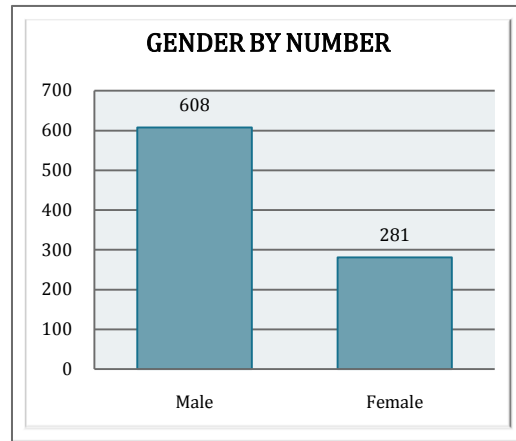
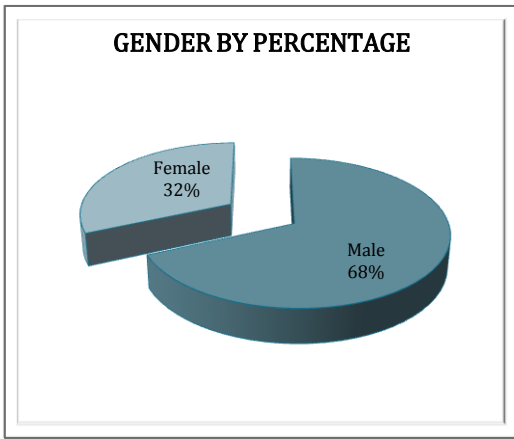


ARREST DEMOGRAPHICS

In October, there were a total of 889 arrests, as opposed to 837 arrests in October last year, a 6% increase; that is .55 arrests per crime in October of this year, comparing to .55 arrests per crime last year, no significant change.

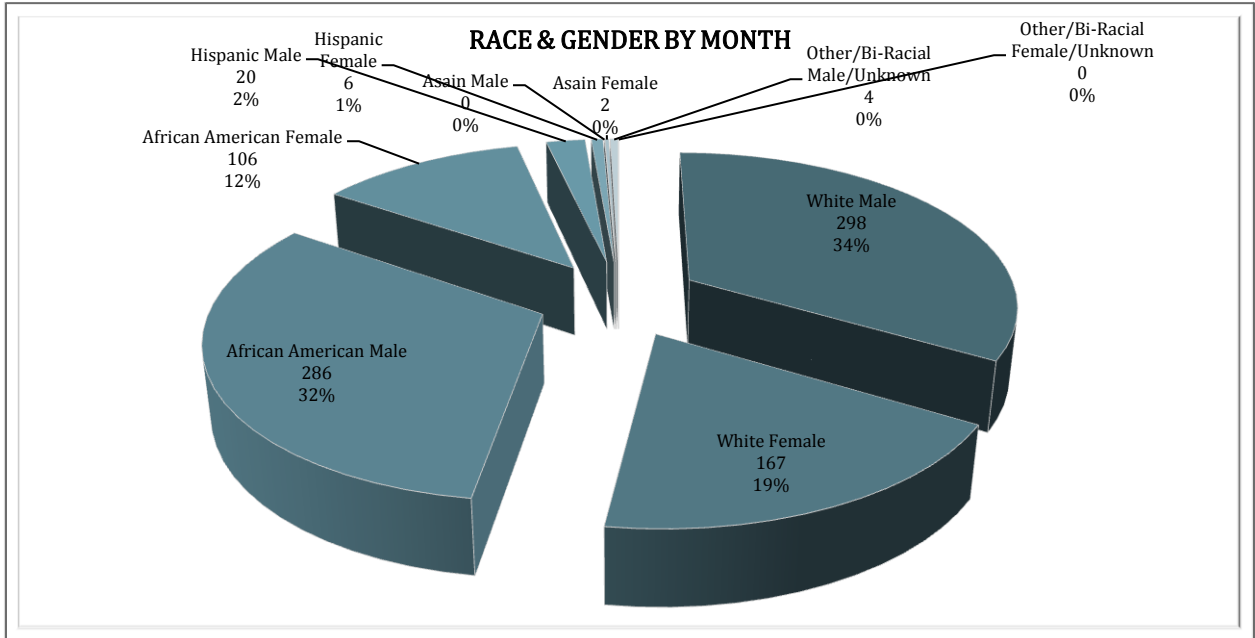
of offenders have been male ($n = 608$), as opposed to female ($n = 281$) and Caucasian ($n = 465$) and African American ($n = 392$) as opposed to Hispanic ($n = 26$), Asian ($n = 2$), or other/unknown/bi-racial ($n = 4$).

This section breaks down this month's arrests by race and gender. The majority

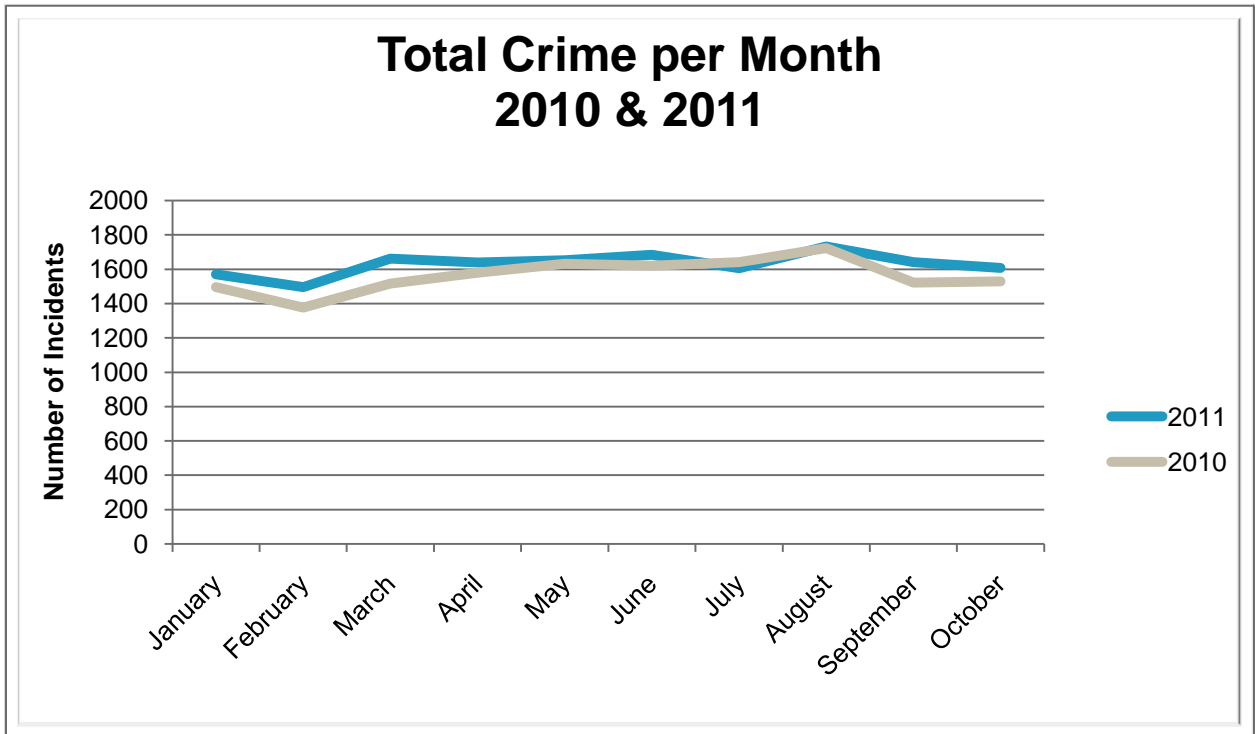


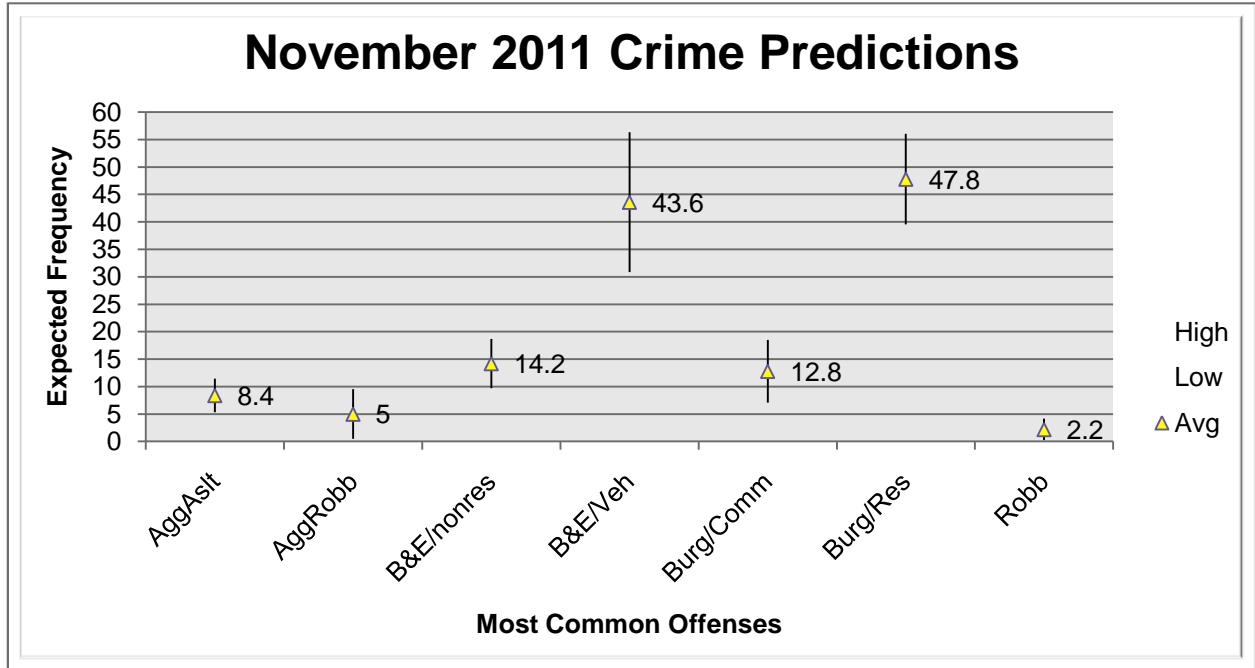
Caucasian males make up the majority, 34%, of arrestees this month ($n = 298$). African American males make up 32% of arrestees for the month of October ($n = 286$). Caucasian females make up 19% ($n = 167$) and African American females make up 12% ($n = 106$). Hispanic males make up 2% ($n = 20$). There were also 4

Other/Biracial Males, 6 Hispanic Females, 2 Asian Females arrested in the month of October. This distribution can be reviewed in the pie chart on the following page.



*Note: The 0% labels may represent rounded real percentage values of 0 > 0.99.





* Above predictions are based on 5 year November Data of Most Common Offenses; Source: RPS.

EMERGENCY 911

Also known as Public Safety Answering Point (PSAP), the Emergency 911 Division is responsible for answering all calls from public for emergency assistance, accessing the needed information to best assist, and then assigning the most efficient and effective

emergency response. In addition, this division is responsible for setting priority call dispatching to field units including Police, Fire, and EMS. Emergency 911 also maintains all records for radio logs, calls for service, and other emergency service data collections.

Calls by Type	This Month	This Month Last Year	YTD	Last YTD	Change By Month	Change YTD
Land Line E911	884	913	7,506	8,868	-3%	-15%
Cell Phone E911	3,951	3,457	35,933	33,710	14%	7%
Admin Lines Non Emergency	16,220	16,655	147,367	156,772	-3%	-6%
TOTALS	21,055	21,025	190,806	199,350	0%	-4%
Calls by Agency	This Month	This Month Last Year	YTD	Last YTD	Change By Month	Change YTD
Jonesboro PD Calls	6,798	6,360	61,109	61,694	7%	-1%
Craighead Cty Sheriff	1,389	1,157	11,191	10,665	20%	5%
Jonesboro Fire Dpt - dispatch	220	225	1,705	1,669	-2%	2%
Jonesboro Fire Dpt - Med Asst	87	113	982	1,165	-23%	-16%
Craighead Cty - Fire	85	191	514	744	-55%	-31%
Craighead Cty - 1st Responder	88	100	789	763	-12%	3%
Emerson Ambulance	283	238	2,295	2,442	19%	-6%
Medic One	305	301	2,721	2,928	1%	-7%
Air Evac	1	2	10	12	-50%	-17%
Coroner	2	4	21	27	-50%	-22%
ARK State Police	17	21	135	156	-19%	-13%
Jonesboro Animal Control	1	72	152	709	-99%	-79%
Wreckers Called	210	161	1,300	1,713	30%	-24%
TOTALS	9,486	8,945	82,924	84,687	6%	-2%

Calls by Municipality	This Month	This Month Last Year	YTD	Last YTD	Change By Month	Change YTD
Bay PD	118	64	969	1021	84%	-5%
Bono PD	196	206	1663	1981	-5%	-16%
Brookland PD	164	178	1330	2010	-8%	-34%
Caraway PD	160	88	857	1010	82%	-15%
Cash PD	31	36	683	520	-14%	31%
Egypt PD	14	28	100	236	-50%	-58%
Lake City PD	126	130	1029	1233	-3%	-17%
Monette PD	186	153	1341	1420	22%	-6%
TOTALS	995	883	7,972	9,431	13%	-15%

UNIFORM PATROL DIVISION

The UPD is responsible for responding to calls into the Emergency - 911 Division by civilians and are normally the first responders. Jonesboro is divided into 6 patrol districts. Officers from UPD are assigned to a

district and work the same district every shift. In addition, when a Traffic Officer is not available, a UPD Officer will respond to traffic accidents and assist in directing traffic when necessary.

Incidents	This Month	This Month Last Year	YTD	Last YTD	Change By Month	Change YTD
Calls for Service	6,804	6,297	67,946	60,809	8%	12%
Complaints / Calls	4,272	3,944	41,431	38,050	8%	9%
Assists	1,100	1,009	11,771	10,785	NC	NC
Incident Reports	958	846	9,736	9,458	13%	3%
Street Accidents	88	93	818	960	-5%	-15%
Private Property Accidents	54	27	456	273	100%	67%
Traffic Stops	1,821	1,929	20,204	19,345	-6%	4%
Traffic Citations	567	743	6,768	7,117	-24%	-5%
DWI	23	30	241	213	-23%	13%
Mis. Arrests	505	347	5,006		NC	NC
Felony Arrests	100	54	928		NC	NC
Warrants Served	1,589	866	14,975	11,357	83%	32%
Alarms	307	302	3,321	3,023	2%	10%
Written Warnings	667	794	6,994	7,773		
TOTALS	18,855	17,281	190,595	169,163	9%	13%
Hours Worked	7,748	10,874	96,519	99,710	-29%	NC

PROWL

The Prowl unit is a uniformed street crimes unit specializing in criminal patrol, narcotics enforcement, gang investigation, and prostitution activity. The unit conducts directed patrols, investigates citizen complaints of street-level criminal activity, and directly assists the 2nd Judicial Drug Task Force. PROWL also assists any division within the Jonesboro Police Department at any time when needed.



Incidents	This Month	This Month Last Year	YTD	Last YTD	Change By Month	Change YTD
Street Accidents	0	0	0	0	N/C	N/C
Private Property Accidents	0	0	0	1	N/C	-100%
Traffic Citations	26	27	301	310	-4%	-3%
DWI	0	0	1	1	N/C	0%
Mis. Arrests	75	64	939	915	17%	3%
Felony Arrests	14	26	248	282	-46%	-12%
Drug Arrests	17	21	252	278	-19%	-9%
Public Intoxication Arrests	0	0	2	0	N/C	N/C
Calls For Service	110	71	887	901	55%	-2%
Alarms	0	0	0	0	N/C	N/C
Parking Citations	0	0	0	0	N/C	N/C
Written Warnings	23	20	452	220	15%	105%
Assists	0	0	0	0	N/C	N/C
TOTALS	265	229	3,082	2,908	16%	6%
Value of Drugs Seized	\$1,000	\$800	\$53,550	\$69,238	25%	-23%
Value of Assets Seized	300	517	52,230	58,150	-42%	-10%
Patrol Miles	5,900	4,200	52,620	5,030	40%	946%

CRIMINAL INVESTIGATIVE DIVISION

The CID is responsible for conducting follow-up investigations into criminal acts reported to the Jonesboro Police Department. The primary goal is to collect and present evidence that conclusively leads to a

successful arrest. Additionally, CID is charged with clearing additional crimes, recovering stolen property, preventing additional crimes, and gathering intelligence information.

Investigations	This Month	This Month Last Year	YTD	Last YTD	Change By Month	Change YTD
Criminal Investigations Assigned	51	86	862	890	-41%	-3%
Criminal Investigations Closed	50	68	681	810	-26%	-16%
Cleared by Arrests	47	32	488	479	47%	2%
Unfounded	6	11	63	86	-45%	-27%
Exceptionally Cleared	7	15	86	137	-53%	-37%
Filed With Prosecutors Office	4	7	32	68	-43%	-53%
TOTALS	165	219	2212	2470	-25%	-10%
Crimes Against Persons	This Month	This Month Last Year	YTD	Last YTD	Change By Month	Change YTD
Criminal Investigations Assigned	11	20	207	184	-45%	13%
Criminal Investigations Closed	29	16	202	196	81%	3%
Cleared by Arrests	24	6	149	126	300%	18%
Unfounded	1	3	15	10	-67%	50%
Exceptionally Cleared	2	7	29	45	-71%	-36%
Filed With Prosecutors Office	2	0	13	15	N/C	-13%
TOTALS	69	52	615	576	33%	7%
Property Crimes	This Month	This Month Last Year	YTD	Last YTD	Change By Month	Change YTD
Criminal Investigations Assigned	37	60	600	631	-38%	-5%
Criminal Investigations Closed	22	44	414	515	-50%	-20%
Cleared by Arrests	11	23	317	317	-52%	0%
Unfounded	5	8	41	63	-38%	-35%
Exceptionally Cleared	5	8	63	92	-38%	-32%
Filed With Prosecutors Office	1	5	11	43	-80%	-74%
TOTALS	81	148	1446	1661	-45%	-13%

Crimes Against Children	This Month	This Month Last Year	YTD	Last YTD	Change By Month	Change YTD
Criminal Investigations Assigned	1	5	25	56	-80%	-55%
Criminal Investigations Closed	2	5	33	65	-60%	-49%
Cleared by Arrests	1	3	11	30	-67%	-63%
Unfounded	0	0	14	16	N/C	-13%
Exceptionally Cleared	0	0	1	7	N/C	-86%
Filed With Prosecutors Office	1	2	4	4	-50%	0%
TOTALS	5	15	88	178	-67%	-51%
Miscellaneous Investigations Assigned	2		25		N/C	N/C
Miscellaneous Investigations Cleared	3		33		N/C	N/C

WARRANTS

The Warrants Division is responsible for serving warrants, criminal summonses, and subpoenas that are issued by the District Court. On city court days, the Warrants Division provides a bailiff for court and a transport officer. In addition, this Division is

responsible for transporting wanted persons arrested in other jurisdictions back to Jonesboro. The STEP program operates within this division and is a grant-funded operation in which officers can get paid overtime to enforce the safety belt law.

Arrests	This Month	This Month Last Year	YTD	Last YTD	Change By Month	Change YTD
Misdemeanor	1514	1414	7908	7262	7%	9%
Felony	2	0	10	4	N/C	150%
Total Arrests	1516	1414	7918	7266	7%	9%
Warrants by Activity	This Month	This Month Last Year	YTD	Last YTD	Change By Month	Change YTD
Subpoenas	378	325	2554	2489	16%	3%
Commitments	2	2	8	20	0%	-60%
Traffic Citations	0	0	10	13	N/C	-23%
Complaints	0	0	5	0	N/C	N/C
Assist	0	0	0	0	N/C	N/C
Alarms	0	0	0	0	N/C	N/C
Hours by Activity	This Month	This Month Last Year	YTD	Last YTD	Change By Month	Change YTD
SI Criminal	214	292	2239	2189.88	-27%	2%
Court	129	116	1329.5	1317.08	11%	1%
Prisoner Transport	22.5	17.5	259.5	279.68	29%	-7%
Hours Worked	This Month	This Month Last Year	YTD	Last YTD	Change By Month	Change YTD
Regular Hours Worked	568	678	6238	5734.5	-16%	9%
Overtime Hours Worked	4	5.5	85.5	58.5	-27%	46%
TOTAL Hours Worked	572	683.5	6323.5	5793	-16%	9%
Mileage	This Month	This Month Last Year	YTD	Last YTD	Change By Month	Change YTD
Total Mileage	1890	2937	25607	29579	-36%	-13%
STEP	This Month	This Month Last Year	YTD	Last YTD	Change By Month	Change YTD
DWI Arrest	2	0	10	5	N/C	100%
DUI Arrest	0	0	0	0	N/C	N/C
Traffic Citations	119	83	1517	1159	43%	31%
Felony Arrests	0	0	1	2	N/C	-50%
Drug Arrests	0	0	0	1	N/C	-100%
STEP TOTALS	121	83	1528	1167	46%	31%
STEP Hours Worked	80	96.5	841	1098.5	-17%	-23%
STEP Miles Driven	484	609	7112	7870	-21%	-10%

DRUG TASK FORCE

The DTF is responsible for investigating major drug traffickers in the area, including all types of illegal drugs. They work closely

with local, state, and federal agencies to eradicate drugs from the community.

INVESTIGATIONS	This Month	This Month Last Year	YTD	Last YTD	Change By Month	Change YTD
Opened	25	19	244	274	32%	-11%
Closed	22	16	237	242	38%	-2%
TOTAL	47	35	481	516	34%	-7%
With Nexus to Jonesboro	This Month	This Month Last Year	YTD	Last YTD	Change By Month	Change YTD
Opened	26	13	251	240	100%	5%
Closed			0		N/C	N/C
TOTAL	26	13	251	240	100%	5%
Outside Jonesboro (No Known Nexus)	This Month	This Month Last Year	YTD	Last YTD	Change By Month	Change YTD
Opened	0	1	13	16	-100%	-19%
Closed	0	0	0	0	N/C	N/C
TOTAL	0	1	13	16	-100%	-19%
ASSISTANCE RENDERED	This Month	This Month Last Year	YTD	Last YTD	Change By Month	Change YTD
Assist to Outside Agencies	2	2	16	29	0%	-45%
Assist to Jonesboro UPD/CID	19	9	133	150	111%	-11%
ARRESTS	This Month	This Month Last Year	YTD	Last YTD	Change By Month	Change YTD
Miscellaneous	13	0	81	54	N/C	50%
Felony	53	24	309	355	121%	-13%
Marijuana	6	1	76	73	500%	4%
Cocaine	4	1	19	17	300%	12%
Crack Cocaine	5	1	25	40	400%	-38%
Methamphetamine/ICE	17	3	103	84	467%	23%
LSD	0	0	0	0	N/C	N/C
Ecstasy (MDMA or Other Designer Drug)	0	0	0	5	N/C	-100%
Prescription	1	0	21	18	N/C	17%
Opiates (Heroin,Opium)	0	0	1	0	N/C	N/C
Labs	0	5	16	24	-100%	-33%
All Other Drug Offenses	0	0	0	0	N/C	N/C
ASSET FORFEITURE	This Month	This Month Last Year	YTD	Last YTD	Change By Month	Change YTD
Vehicles Seized(No.)	0	0	2	5	N/C	-60%
Value of Assets Seized(Includes Value of vehicles)	\$0	\$0	\$63,229	\$44,157	N/C	43%
Asset Value Awarded to Jonesboro PD (State)		\$0	\$0	\$0	N/C	N/C
Asset Value Awarded to Jonesboro PD (Federal)		\$0	\$0	\$0	N/C	N/C
Asset Value Awarded to Jonesboro PD (Total)		\$0	\$0	\$0	N/C	N/C
ARRESTS DEMOGRAPHICS	This Month	This Month Last Year	YTD	Last YTD	Change By Month	Change YTD
White	21	11	175	134	91%	31%
African American	10	3	90	73	233%	23%
Latino	1	0	8	28	N/C	-71%
Asain	0	0	1	1	N/C	0%
Other/Bi-Racial	0	0	0	0	N/C	N/C
Male	18	10	198	178	80%	11%
Female	14	4	73	43	250%	70%
White Male	12	7	112	100	71%	12%
White Female	10	4	60	37	150%	62%
African American Male	5	3	76	72	67%	6%
African American Female	4	0	11	3	N/C	267%
Latino Male	1	0	8	23	N/C	-65%
Latino Female	0	0	0	3	N/C	-100%
Asain Male	0	0	0	1	N/C	-100%
Asain Female	0	0	0	0	N/C	N/C
Other/Bi-Racial Male	0	0	0	0	N/C	N/C
Other/Bi-Racial Female	0	0	0	0	N/C	N/C

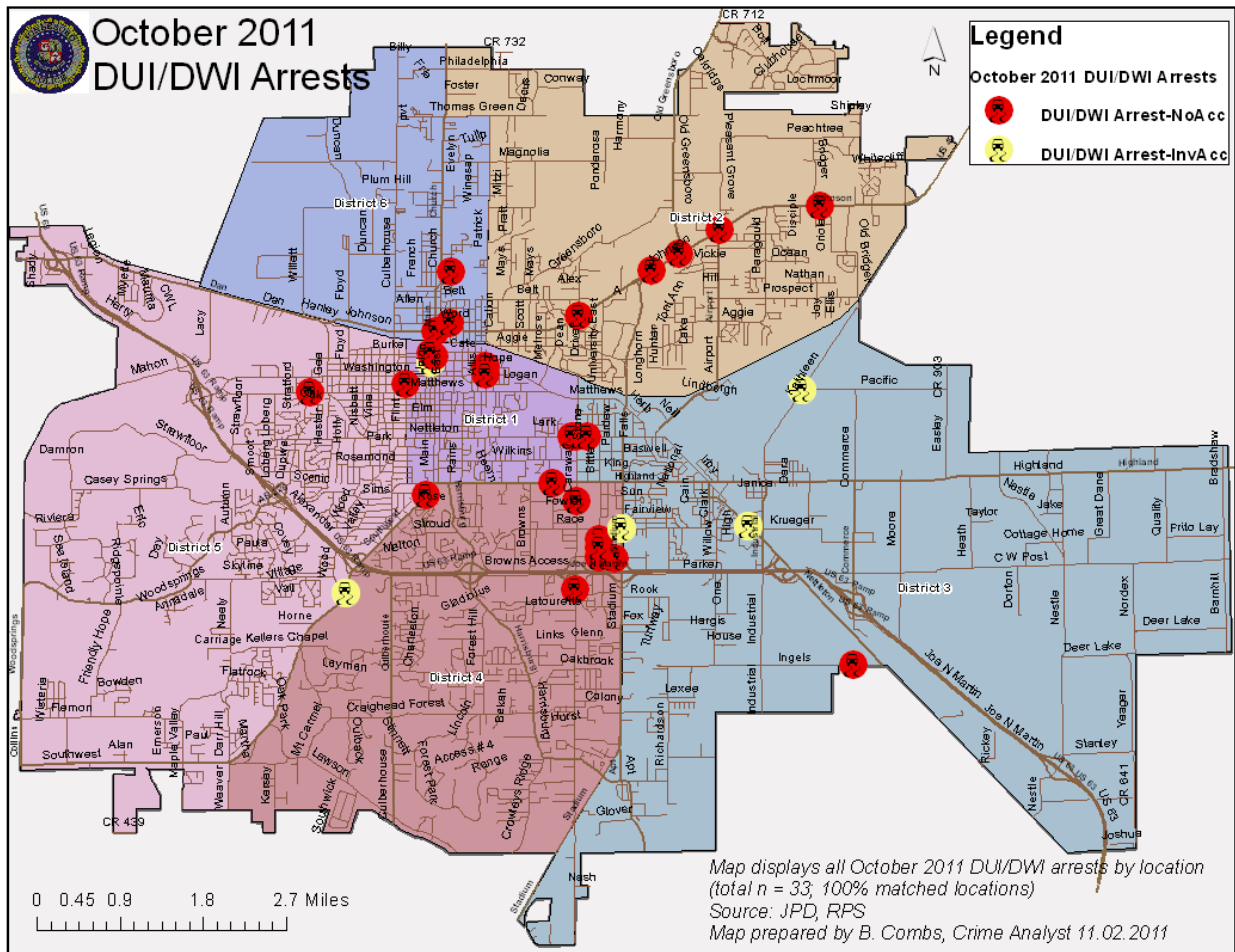
TRAFFIC

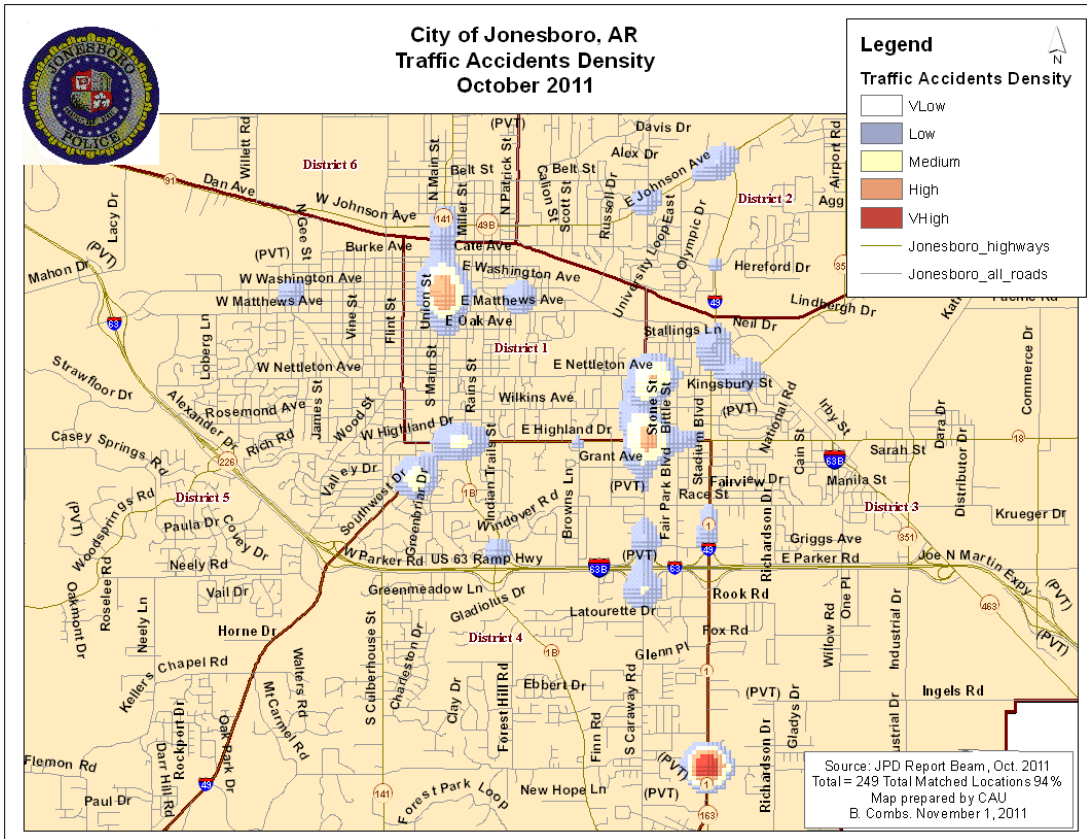
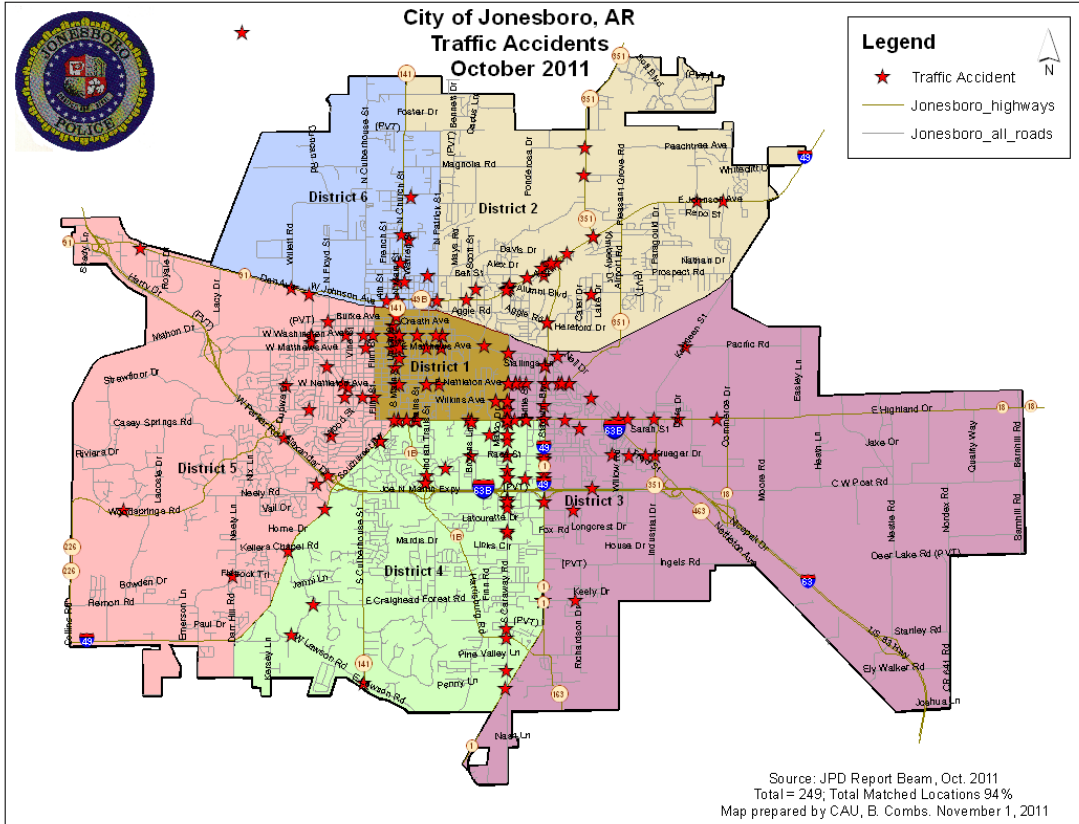
Comprised of three motor units and three Chargers, the Traffic Enforcement Unit responds to traffic accidents and provides increased enforcement in particularly

challenging areas. This unit also provides extra coverage for specific congestion problems and special events in the community. Last, they work details

targeting specific issues, such as DWI enforcement and traffic safety checkpoints.

Incidents	This Month	This Month Last Year	YTD	Last YTD	Change By Month	Change YTD
Street Accidents	171	158	1317	1301	8%	1%
Private Property Accidents	47	32	406	369	47%	10%
Traffic Citations	131	200	1830	2406	-35%	-24%
DWI	4	3	37	30	33%	23%
Mis. Arrests	15	31	165	212	-52%	-22%
Felony Arrests	1	2	15	38	-50%	-61%
Drug Arrests	0	0	0	0	N/C	N/C
Public Intoxication Arrests	0	0	2	2	N/C	0%
Calls For Service	317	294	2792	2711	8%	3%
Alarms	2	1	13	16	100%	-19%
Parking Citations	0	0	0	0	N/C	N/C
Written Warnings	15	130	733	1092	-88%	-33%
TOTALS	703	851	7310	8177	-17%	-11%
Value of Asstes Seized	\$0	\$0	\$0	\$0	N/C	N/C
Patrol Miles	4,860	5,028	48,007	52,643	-3%	-9%
Hours Worked	787.5	767	7783.5	7778.5	3%	0%





PARKING ENFORCEMENT

The Parking Enforcement Division is responsible for enforcing parking laws in the downtown area. This service provides a safe

and convenient parking situation for the public.

CITATIONS ISSUED	This Month	This Month Last Year	YTD	Last YTD	Change By Month	Change YTD
Citations	23	38		476	-39%	-100%
Written Warnings	0					
Verbal Warnings	12				N/C	N/C
MINUTES BY ACTIVITY	This Month	This Month Last Year	YTD	Last YTD	Change By Month	Change YTD
Office	440	330	10,130	10,020	33%	1%
Admin(Non-Office)	1,050	495	9,570	9,015	112%	6%
Community	0				N/C	N/C
Training	0		115		N/C	N/C
Patrol	4,600	3,735	38,320	37,445	23%	2%

ANIMAL CONTROL

The Animal Control Division is responsible for educating the public on safe and humane issues regarding animal treatment, enforcing all animal laws and ordinances, assisting the

public in resolving animal issues, and protecting the safety and welfare of the citizens and animals in this community.

Incidents	This Month	This Month Last Year	YTD	Last YTD	Change By Month	Change YTD
Barking Complaints	7	15	111	81	-53%	37%
Bite Reports	7	11	107	92	-36%	16%
Door Hangers	35	38	346	316	-8%	9%
Welfare Checks	84	63	1,102	732	33%	51%
Advised of Rights	752	289	6,871	2,580	160%	166%
Incident Reports	6	3	54	54	100%	0%
Gone on Arrival	29	41	317	397	-29%	-20%
Complaints	603	573	6,478	6,015	5%	8%
Desk Complaints	1,198	872	15,164	8,604	37%	76%
Captured Dogs	121	120	1,378	1,206	1%	14%
Captured Cats	6	7	188	110	-14%	71%
Captured Wildlife	16	20	269	295	-20%	-9%
Chemical Captures	0	6	24	57	-100%	-58%
Traps	38	15	164	194	153%	-15%
Deceased Animals	54	86	591	690	-37%	-14%
Assist J.P.D.	7	7	88	66	0%	33%
Assist C.S.O.	4	0	14	2	N/C	600%
Public Relations	772	417	8,240	5,127	85%	61%
CITATIONS ISSUED	69	52	1,072	420	33%	155%
WARNINGS ISSUED	40	31	613	369	29%	66%
Physical Arrests	9	0	65	10	N/C	550%
City Warrants Served	21	4	251	26	425%	865%
County Warrants Served	2	1	49	1	100%	4800%
Felony Bench Warrants	2	0	10	0	N/C	N/C
Euthanized	62	50	800	564	24%	42%
Deceased Animals Landfill lbs.	4,200	3,980	38,600	37,420	6%	3%
Wildlife Euthanized	16	20	276	295	-20%	-6%
Sent to Rescue Centers	2	0	30	121	N/C	-75%
Adoptions	56	40	440	328	40%	34%
Miles Driven	6,585	7,773	71,062	74,879	-15%	-5%

FLEET MAINTENANCE

The Fleet Maintenance is responsible for all of the police vehicle maintenance upkeep, cleanliness, and purchasing. In addition, this

Division handles most of the purchasing of equipment, supplies, and uniforms for all of the Police Department.

Repair Costs by Model Year	This Month	This Month Last Year	YTD	Last YTD	Change By Month	Change YTD
95-99	\$0.00	\$0.00	\$0.00	\$583.68	N/C	-100%
2000	\$0.00	\$269.92	\$292.92	\$550.38	-100%	-47%
2001	\$869.18	\$0.00	\$1,082.20	\$323.26	N/C	235%
2002	\$0.00	\$0.00	\$405.65	\$2,054.11	N/C	-80%
2003	\$0.00	\$0.00	\$0.00	\$577.11	N/C	-100%
2004	\$122.00	\$990.19	\$1,653.66	\$9,219.84	-88%	-82%
2005	\$146.50	\$764.67	\$9,557.75	\$8,988.21	-81%	6%
2006	\$3,886.99	\$2,173.53	\$32,062.76	\$32,351.67	79%	-1%
2007	\$2,217.23	\$1,009.80	\$15,596.69	\$11,661.45	120%	34%
2008	\$0.00	\$11.23	\$1,812.03	\$1,408.42	-100%	29%
2009	\$501.56	\$38.96	\$1,448.13	\$991.19	N/C	N/C
2010	\$0.00	\$311.95	\$433.45	\$311.95	N/C	N/C
2011	\$11.61	n/a	\$81.27	n/a	N/C	N/C
Totals by Year Model						
TOTALS	\$7,755.07	\$5,570.25	\$64,426.51	\$69,021.27	39%	-7%

Routine Preventative Maintenance by Model Year	This Month	This Month Last Year	YTD	Last YTD	Change By Month	Change YTD
95-99	\$0.00	\$0.00	\$78.00	\$73.50	N/C	6%
2000	\$0.00	\$0.00	\$40.00	\$29.00	N/C	38%
2001	\$106.80	\$0.00	\$194.80	\$60.00	N/C	225%
2002	\$0.00	\$0.00	\$50.30	\$92.50	N/C	-46%
2003	\$20.00	\$20.00	\$118.00	\$985.15	0%	-88%
2004	\$20.00	\$1,146.36	\$1,960.80	\$5,477.43	-98%	-64%
2005	\$40.00	\$654.12	\$4,130.61	\$4,914.69	-94%	-16%
2006	\$1,494.24	\$1,939.22	\$15,560.22	\$15,847.02	-23%	-2%
2007	\$200.00	\$1,718.15	\$10,062.01	\$11,640.09	-88%	-14%
2008	\$60.00	\$20.00	\$2,645.23	\$2,596.38	200%	2%
2009	\$100.00	\$240.89	\$4,336.08	\$2,478.78	N/C	N/C
2010	\$20.00	\$253.10	\$2,142.69	\$2,022.50	N/C	N/C
2011	\$120.00	n/a	\$340.00	n/a	N/C	N/C
Totals by Year Model						
TOTALS	\$2,181.04	\$5,991.84	\$41,658.74	\$46,217.04	-64%	-10%

RECORDS

The Records Division is responsible for providing administrative and clerical support to the department. Major responsibilities include entering the accident and incident reports and tickets into the records database management system, assisting the general

public for report requests, performing criminal backgrounds, serving as a switchboard at times, performing validations, and setting up and managing the payment plans out of court.

RECORDS	This Month	This Month Last Year	YTD	Last YTD	Change By Month	Change YTD
Incident/Arrest Reports Processed	1,314	1,243	13,382	12,403	6%	8%
Accident Reports Processed	259	253	2,099	2,320	2%	-10%
Citations Processed	4,531	4,487	44,603	41,441	1%	8%
Warnings Processed	545	517	6,197	5,757	5%	8%
Backgrounds	10	18	173	171	-44%	1%
Fingerprints	70	62	937	733	13%	28%
Photos	1	0	18	15	N/C	20%
Accident Requests	180	107	1,095	952	68%	15%
Accident Requests Online	9	179	1,330	1,620	-95%	-18%
TOTALS	6,919	6,866	69,834	65,412	1%	7%

PROFESSIONAL STANDARDS

The Office of Professional Standards, a unit within Administration, is charged with the compilation and updating of an extensive set of policies and procedures and providing a general operations guideline and code of conduct for officers to follow. In the event

that a member of the public does experience a negative interaction with an officer, mechanisms are in place for them to lodge a complaint. All complaints are reviewed and investigations completed in a timely manner.

Professional Standards	This Month	This Month Last Year	YTD	Last YTD	Change By Month	Change YTD
Opened (TOTAL)	3	5	39	60	-40%	-35%
Closed	2	5	36	60	-60%	-40%
Inquiries	3	5	31	57	-40%	-46%
Formal Investigations	0	0	9	3	N/C	200%
Sustained	2	3	30	46	-33%	-35%
Not-Sustained	0	1	3	4	-100%	-25%
Exhonerated	0	0	0	2	N/C	-100%
Unfounded	0	1	3	7	-100%	-57%

*** End of the Report ***