

JONESBORO POLICE DEPARTMENT

Monthly Report

November 2013

IN THIS REPORT

CRIME ANALYSIS	1
Total Crime	2
Crimes against Person	3
Property Crimes	4
Crimes of Proactive Policing	5
Other Crimes.....	7
Arrests Demographics	8
EMERGENCY 911	9
UPD	10
PROWL	10
CID	11
WARRANTS	12
DRUG TASK FORCE	13
TRAFFIC	14
Maps	15
ANIMAL CONTROL	16
FLEET MAINTENANCE	16
RECORDS	17
PROFESSIONAL	
STANDARDS	18

The purpose of the Jonesboro Police Department Monthly Report is to compile data into one integrated report for review, allowing for a seamless flow of information for better decision-making. After each department collates their monthly numbers and sends it to the Office of Crime Analysis, it is organized into sections of departmental data, analyzed and packaged, and finally disseminated to department heads, the Chief of Police, the City Mayor, and the City Council. Major sections include Crime Analysis, Emergency 911, Uniform Police Division, Prowl, Criminal Investigative Division, Warrants, Drug Task Force, Traffic, Parking Enforcement, Animal Control, Fleet Maintenance, Records, and Professional Standards.

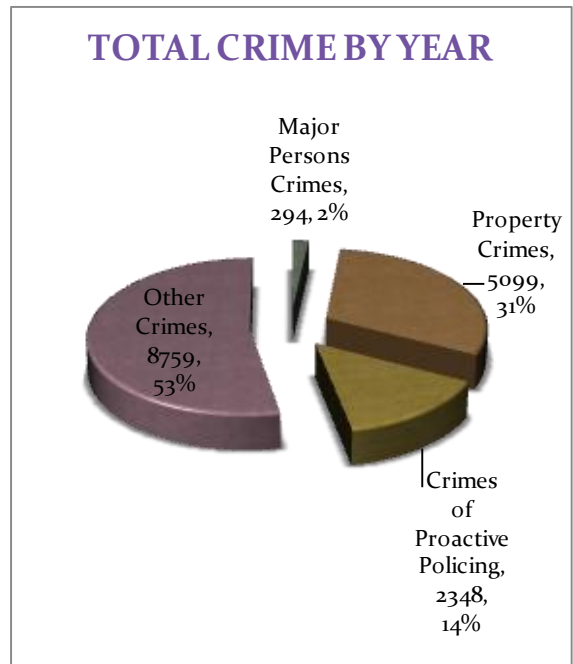
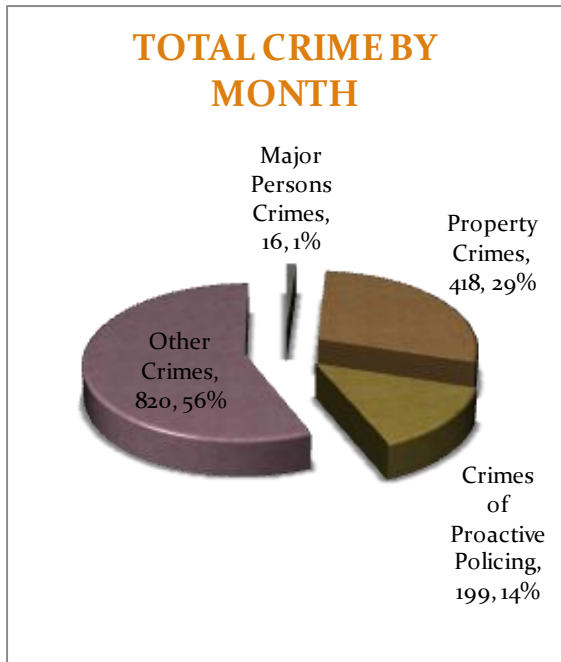
CRIME ANALYSIS

The Crime Analysis division consists of one Crime Analyst and one part-time Crime Analyst Assistant. The Crime Analyst position is responsible for the analysis and dissemination of crime activity data and the collection and maintenance of crime intelligence information for the city of Jonesboro. Additionally, the Crime Analyst is charged with providing the department with current and accurate crime maps, presenting crime activity data to audiences of interest, and with responding to requests for crime data from civilians and departmental staff. Data exported from this division is used by field agents for more effective, efficient policing, administration for improved staffing decisions, and the Mayor's office for community decision making and enhanced public relations. The following section is broken down into Total Crime, Crimes against Persons, Property Crimes, Crimes of Proactive Policing, Other Crimes, Arrest Demographics, and Total Crime Monthly Comparison.

TOTAL CRIME

The crime activity for the month of November 2013 was at a total of 1,453 NIBRIS reportable offenses, a -2% decrease, comparing to the total of offenses reported in November of the last year. With Jonesboro population estimated to be equal to 69,856, the crime rate in November of this year was at 21 crimes per 1,000 population, comparing to 22 crimes per 1,000 population last year¹, a -4% decrease. As indicated on a pie chart below, Other Crimes absorb the majority, 56%, of this month's crime activity (n = 820). Property Crimes fall into a second place and comprise of 29% of all the crimes (n = 418). Following in third and fourth places are, respectively, Crimes of Proactive Policing, comprising of 14% (n = 199) of all the crimes, and Crimes against Persons, comprising of 1% (n = 16) of all the crimes this month.

Year to date data includes number of crimes from January through November 2013. A total of 16,500 NIBRIS reportable offenses were reported in 2013, a -4% decrease, comparing to the same period last year. The year to date crime rate amounts to 236 offenses per 1,000 population, compared to 252 offenses per 1,000 population last year (down 6%). To date this year, 53% of all the crimes is attributed to Other Crimes category (n = 8,759). Property Crimes amount to 31% of all the crimes (n = 5,099), Crimes of Proactive Policing comprise of 14% of all the crimes to date, where n = 2348; Crimes against Persons comprise of 2% of a total year to date number of crimes (n = 294).

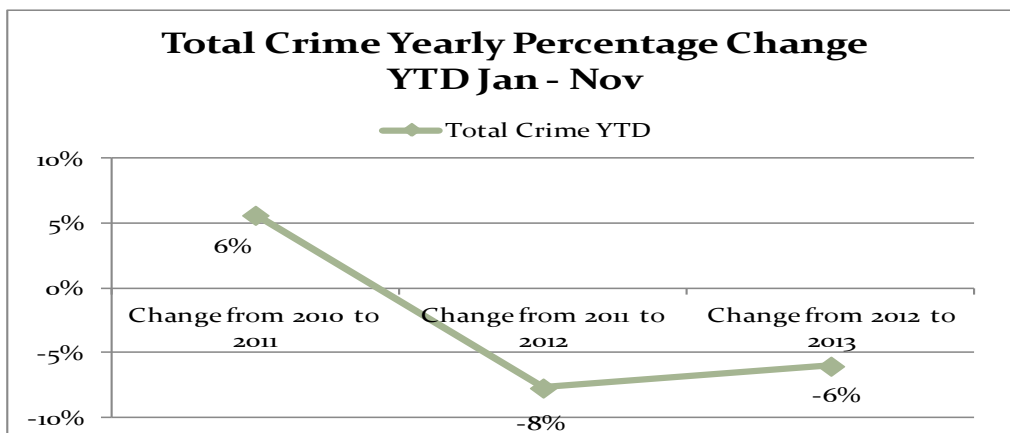
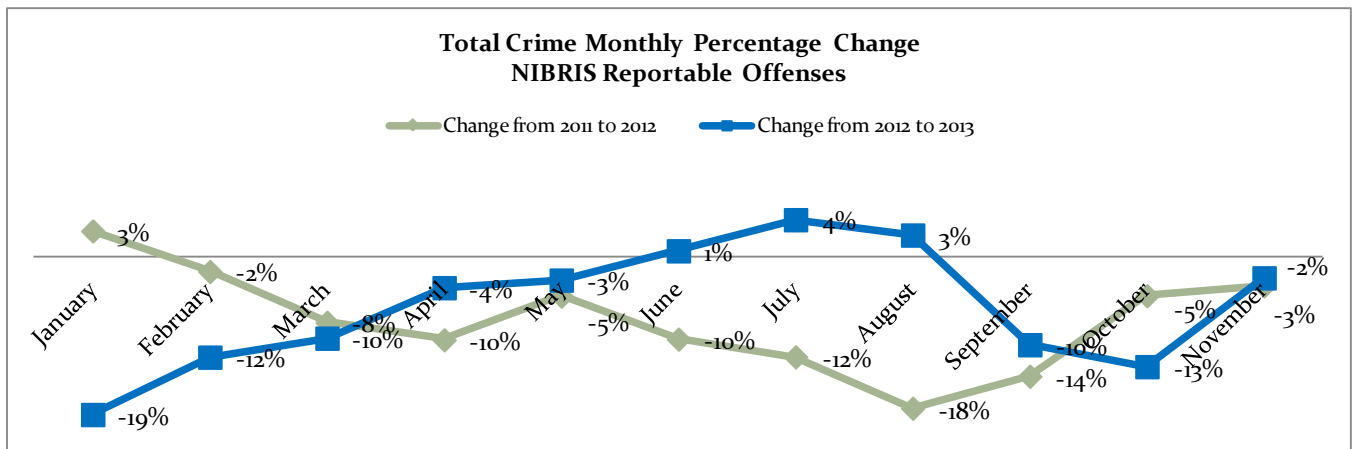
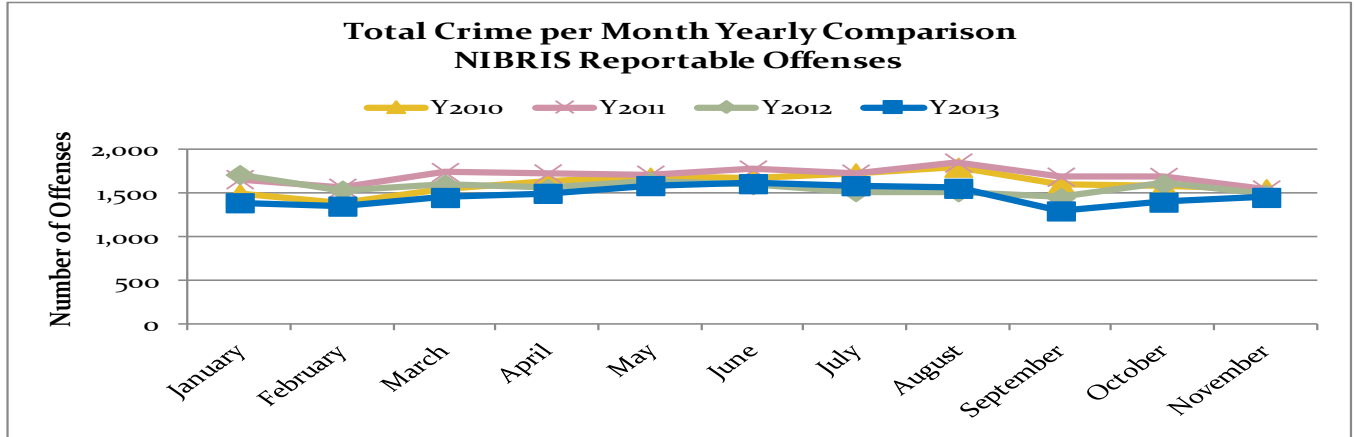


The line charts below depict frequencies of crime and a monthly and yearly percentage change from the last year.

¹ Note: Population numbers are based on 2011 & 2012 population estimate, where 2011 population estimate is 68,547.

MONTHLY REPORT November 2013

December 10, 2013



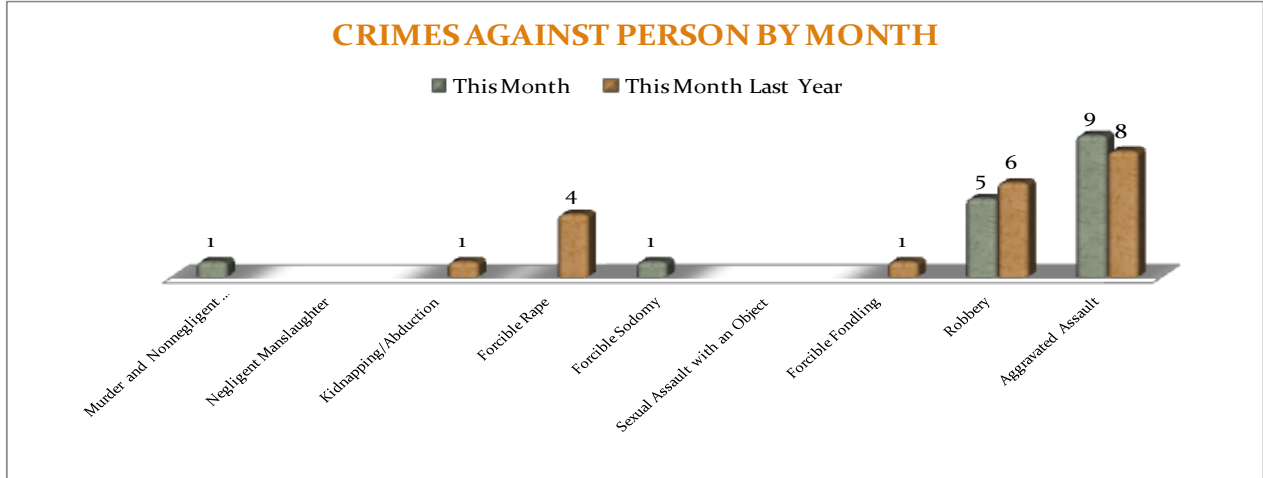
CRIMES AGAINST PERSONS

There are 9 crimes that make up this section. There were a total of 16 offenses in this area in November this year, 4 less offenses, comparing to November of the last year.

There were 4 less Rapes reported this month. As demonstrated on the bar chart below, there are no other significant changes in frequencies for the crimes in this category.

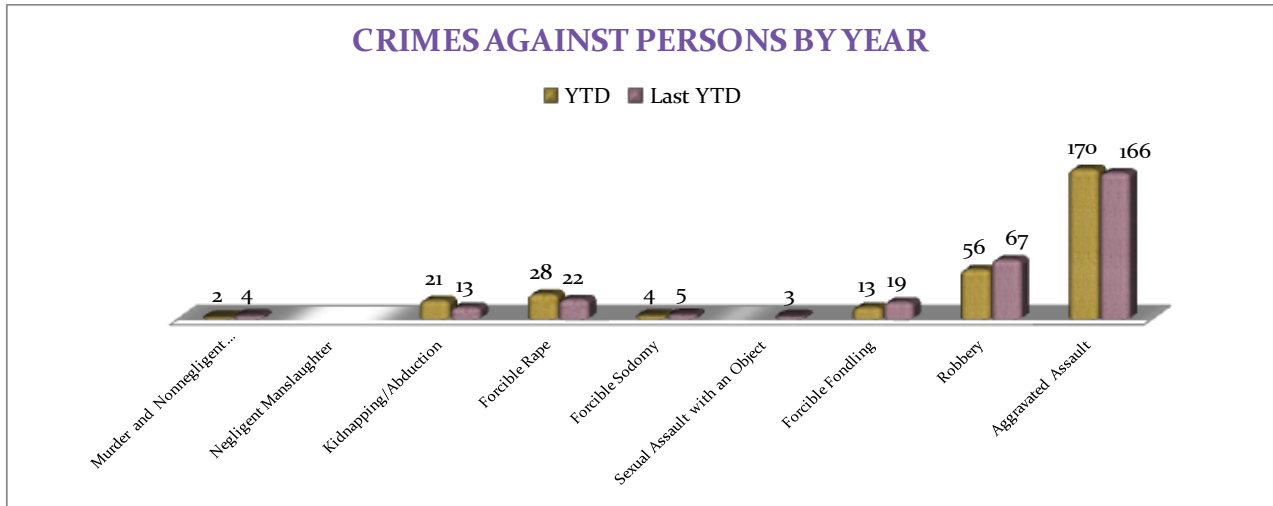
MONTHLY REPORT November 2013

December 10, 2013



A bar graph below shows the year to date data for Crimes against Persons, which amounts to a total of 294 incidents for this category of crimes, which is down -2%, comparing to the year to date data of last year. There were 8 more

Kidnapping/Abductions and 11 less Robberies reported this year so far, comparing with last year's data. There are no other significant changes in frequencies for the crimes in this category.



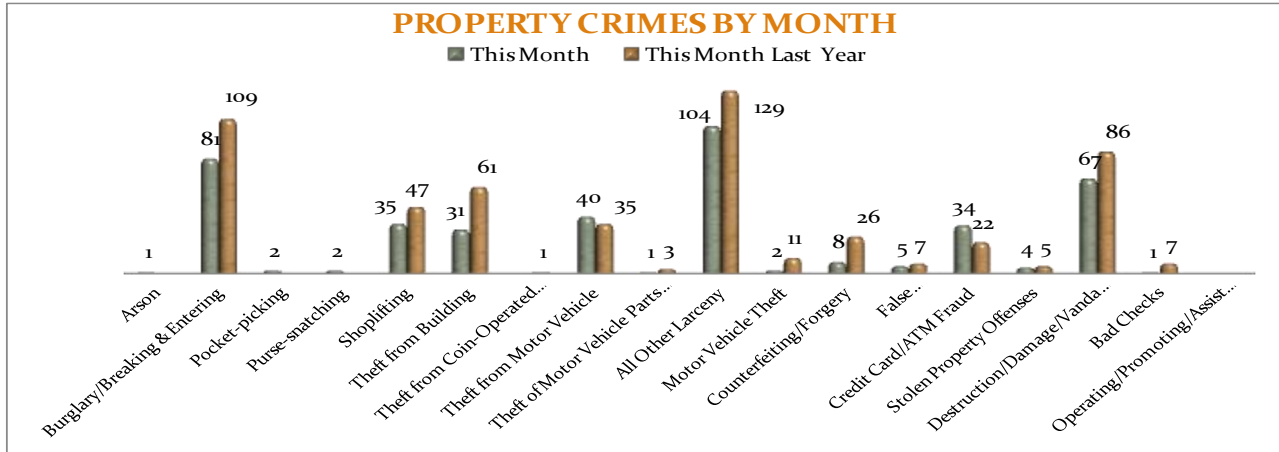
PROPERTY CRIMES

This section displays the criminal activity for 18 crimes, all against property. This month, there were a total of 418 Property Crimes, a 24% decrease, comparing to November of the last year. The data indicates change in Counterfeiting / Forgery, down -69%, Burglary/Breaking & Entering is down -26%,

Theft from Building is down 49%, Destruction/Damage/Vandalism is down -22%, All Other Larceny is down 19%, and there were 9 less Motor Vehicle Thefts, while compared to November of last year. Credit Card/ATM Fraud is up 55%.

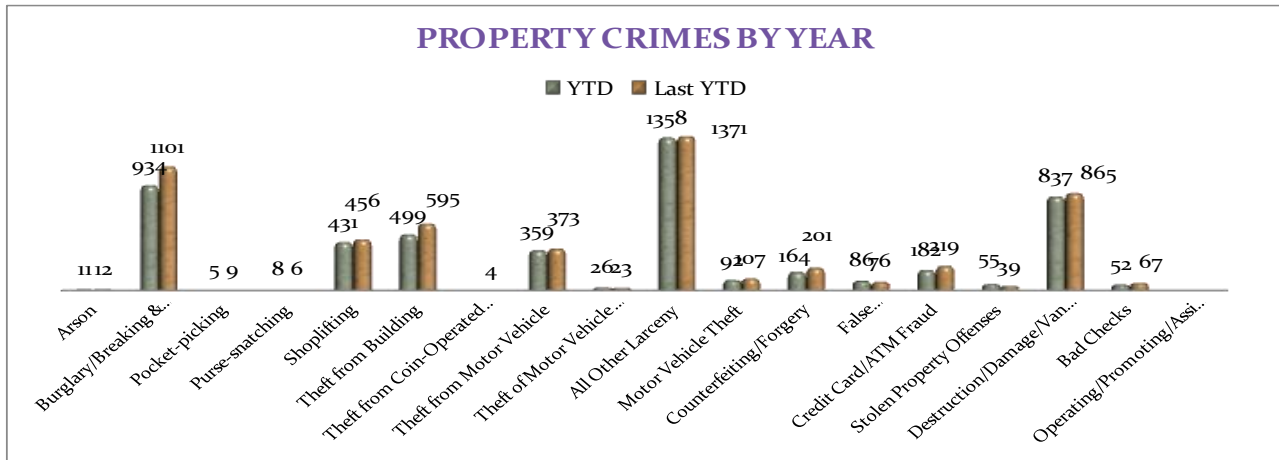
MONTHLY REPORT November 2013

December 10, 2013



To date this year, 5,099 property offenses have occurred, an 8% decrease, comparing to the last year's data at this same time. The following significant changes are noted this year: Credit Card/ATM Fraud is down -17%; Burglary/Breaking & Entering is down -15%, Theft from Building is down -16%, Counterfeiting/Forgery is down -18%,

Destruction/Damage/Vandalism is down -3, and Motor Vehicle Theft is down -14%, while Stolen Property Offenses are up +41% and so is False Pretenses/Swindle/Confidence Game, up +13%. There are no other statistically significant changes noted for other offenses in this category.



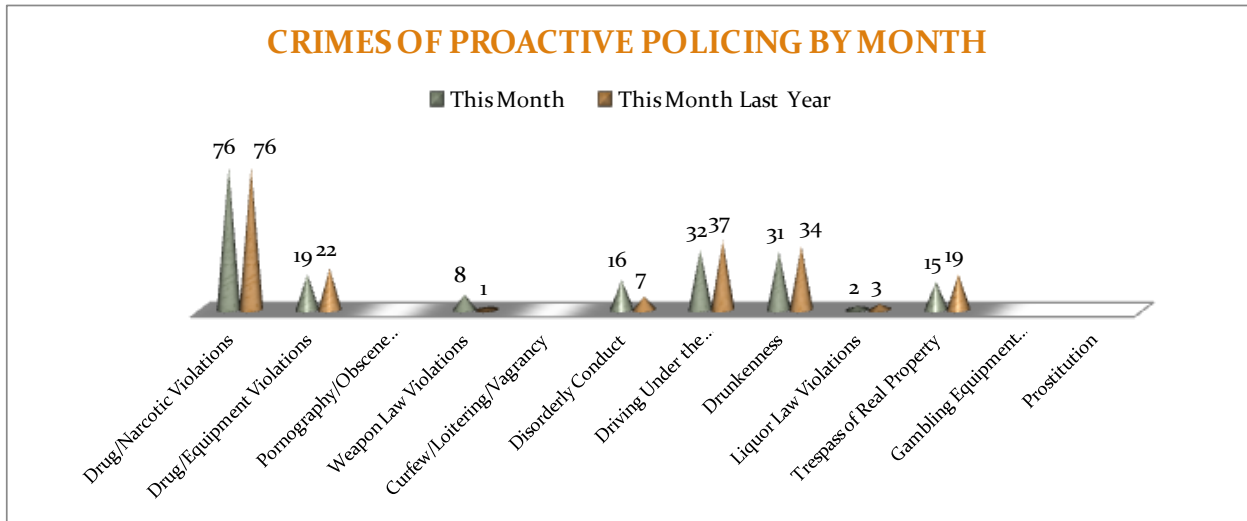
CRIMES OF PROACTIVE POLICING

Crimes of Proactive Policing are those crimes that result from police officers actively policing the streets to combat certain types of street crime. As chart below indicates, twelve crimes fall under this category. A

total of 199 offenses have been reported this month, no change, comparing to November of the last year. There are no significant changes noted for the offenses in this category.

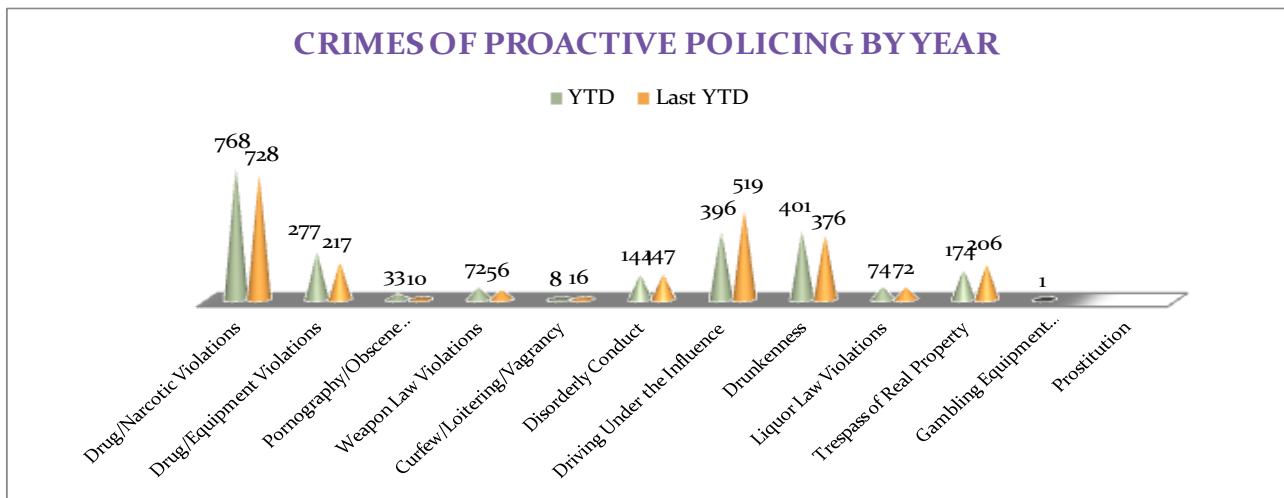
MONTHLY REPORT November 2013

December 10, 2013



To date for the year 2013, there have been 2,348 crimes of proactive policing reported, no overall change when comparing to the last year's to date data. As for individual offenses, however, the following changes are noted: Drug/Narcotic Violations are up 5%, Drug/Equipment Violations are up 28%, and

Drunkenness is up 7%, while Trespass of Real Property is down 16% and Driving Under the Influence is down -24%. Pornography /Obscene Material offenses are up 230% (23 more offenses). There are no other statistically significant changes noted for other offenses in this category.

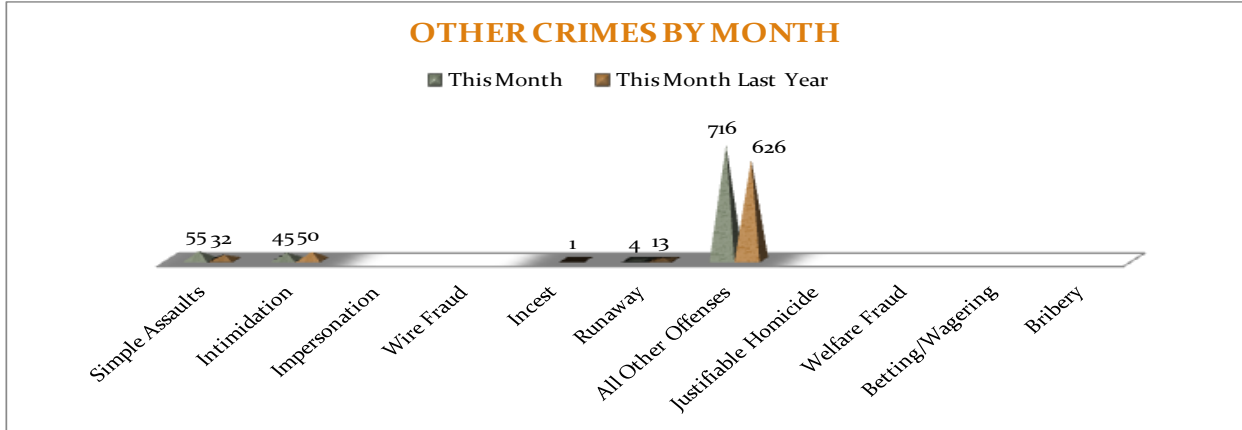


10 December 2013

OTHER CRIMES

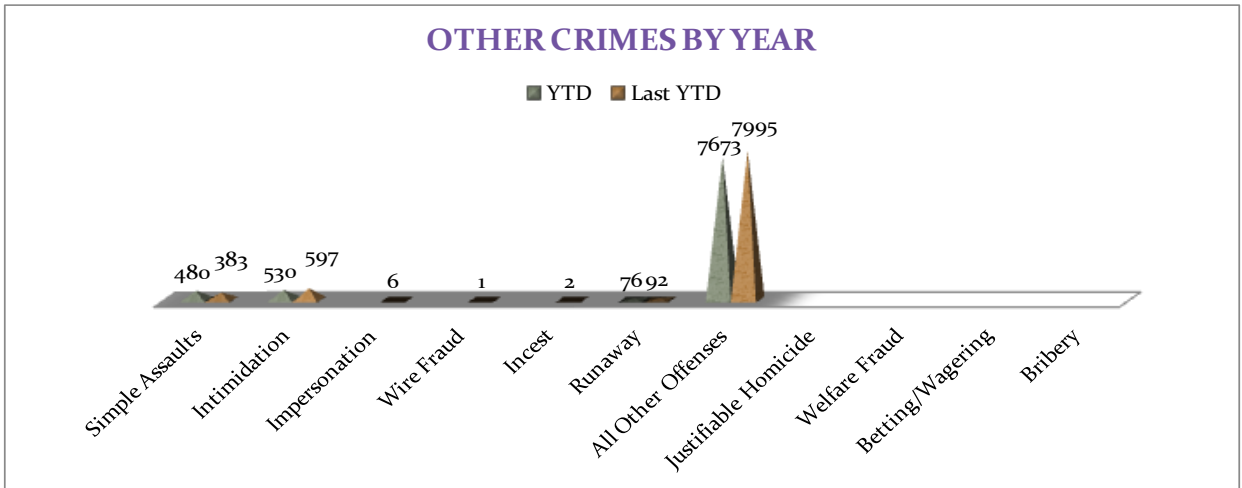
There are 11 crimes that fall into the Other Crimes category. This month, there have been a total of 820 Other Crimes reported, a 14% increase, comparing to November of the

last year. All Other Offenses increased by 14%. No other significant changes are noted in this category of crimes this month.



To date this year, there have been 8,759 Other Crimes offenses reported, a 3% decrease comparing to the last year's to date data. Simple Assaults increased by 25%, Intimidation is down -11%, there were less

17% Runaways reported, and All Other Offenses decreased by -4%. No other significant changes have been observed for other offenses within this category, comparing to the last year's data.

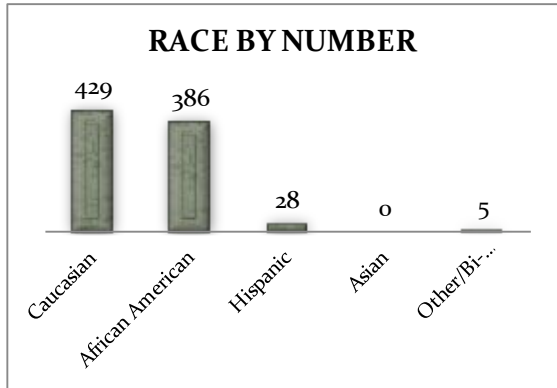
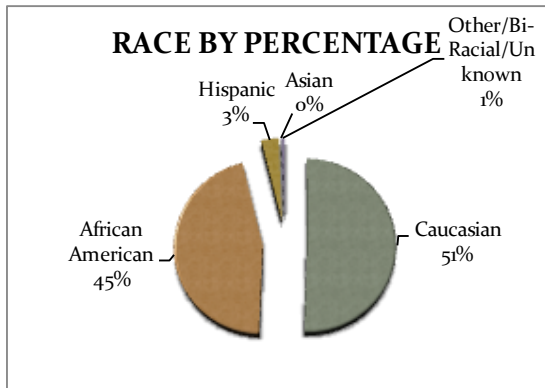
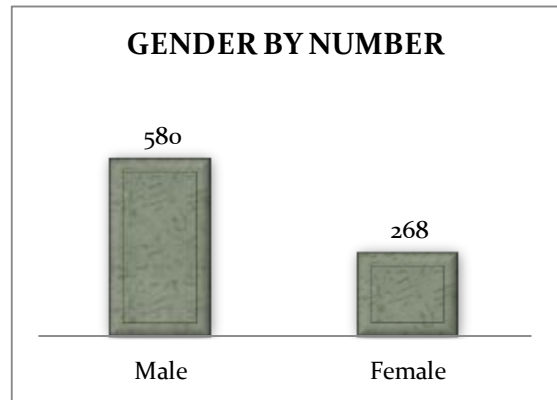
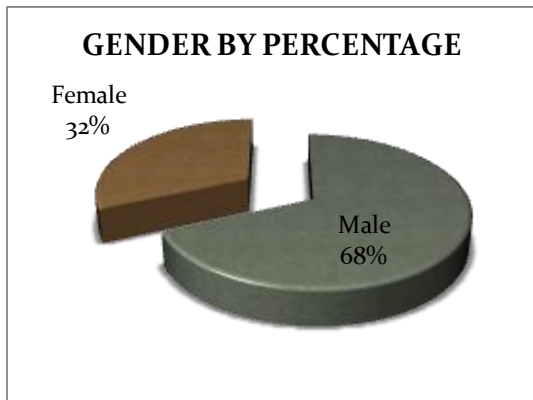


10 December 2013

ARREST DEMOGRAPHICS

In November 2013, there were a total of 848 arrests carried out by the Jonesboro Police Department, comparing with the last year's data for the month of November, up 12%. The rate of arrests per offense increased 15% this month, comparing to the rate from the previous year. This section breaks down this month's arrests by race and gender. The

majority of arrestees, 68%, have been male ($n = 580$), as opposed to 32% of female arrestees ($n = 268$). As for the racial/ethnic composition, the majority of arrestees have been Caucasian (51%) and African American (45%), as opposed to Hispanic (3%), Asian (0%), or other/unknown/bi-racial (1%).

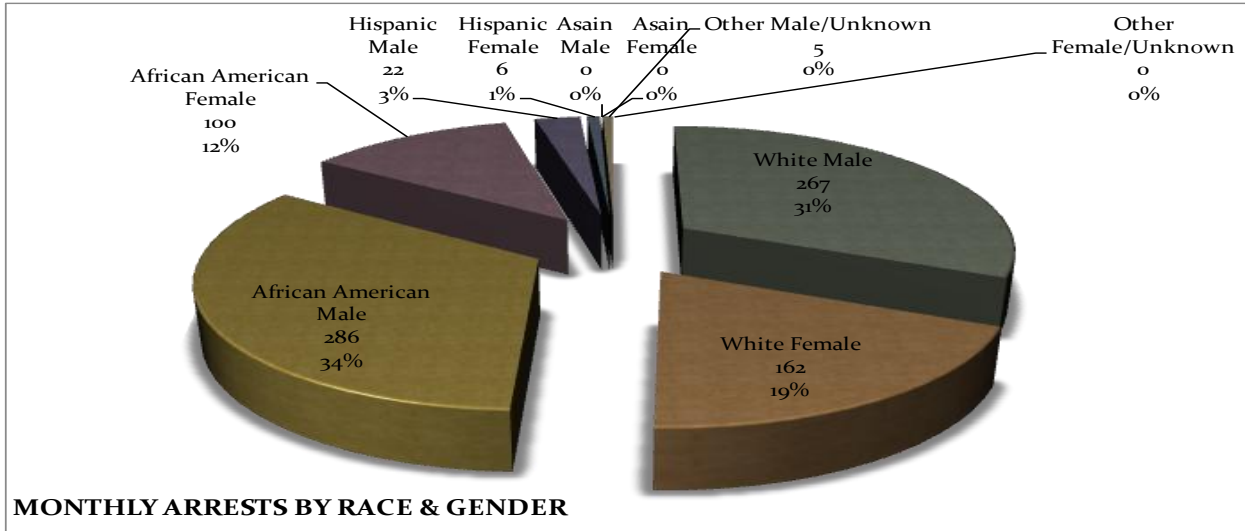


African American males make up the majority, 34%, of arrestees this month ($n = 286$). Caucasian males make up 31% of arrestees for the month of November ($n = 267$). Caucasian females make up 19% ($n = 162$) and African American females make up 12% ($n = 100$) of arrestees this month.

Hispanic males make up 3% ($n = 22$), while Hispanic Females make up 1% of arestees this month ($n = 6$). There were 5 Males and of unknown race or ethnicity arested in November.

MONTHLY REPORT November 2013

December 10, 2013



EMERGENCY 911

Also known as Public Safety Answering Point (PSAP), the Emergency 911 Division is responsible for answering all calls from public for emergency assistance, accessing the needed information to best assist, and then assigning the most efficient and effective emergency response. In addition,

this division is responsible for setting priority call dispatching to field units including Police, Fire, and EMS. Emergency 911 also maintains all records for radio logs, calls for service, and other emergency service data collections.

Calls by Type	This Month	This Month Last Year	YTD	Last YTD	Change By Month	Change YTD
Land Line E911	725	778	8,683	8,565	-7%	1%
Cell Phone E911	4,230	3,728	48,040	45,631	13%	5%
Admin Lines-non emer	13,646	14,204	159,462	182,199	-4%	-12%
TOTALS	18,601	18,710	216,185	236,395	-1%	-9%

Calls by Agency	This Month	This Month Last Year	YTD	Last YTD	Change By Month	Change YTD
Jonesboro PD Calls	6,958	6,423	75,638	76,383	8%	-1%
Craighead Cty Sheriff	1,218	1,141	14,581	13,783	7%	6%
Jonesboro Fire Dpt - dispatch	199	213	2,165	2,415	-7%	-10%
Jonesboro Fire Dpt - Med Asst	149	131	1,542	1,340	14%	15%
Craighead Cty - Fire	50	40	460	710	25%	-35%
Craighead Cty - 1st Responder	122	105	1,053	1,106	16%	-5%
Emerson Ambulance	304	297	3,154	3,347	2%	-6%
Medic One	306	321	3,480	3,259	-5%	7%
Air Evac	0	0	5	9	N/C	-44%
Coroner	5	4	36	34	25%	6%
ARK State Police	12	14	110	145	-14%	-24%
Jonesboro Animal Control	7	0	44	22	N/C	100%
Wreckers Called	224	181	2,015	1,898	24%	6%
TOTALS	9,554	8,870	104,283	104,451	8%	0%

MONTHLY REPORT November 2013

10 December 2013

Calls by Municipality	This Month	This Month Last Year	YTD	Last YTD	Change By Month	Change YTD
Bay PD	75	129	1350	1364	-42%	-1%
Bono PD	235	309	2997	2999	-24%	0%
Brookland PD	150	124	1677	1846	21%	-9%
Caraway PD	75	55	793	1357	36%	-42%
Cash PD	150	19	924	215	689%	330%
Egypt PD	8	2	152	75	300%	103%
Lake City PD	114	83	1421	1490	37%	-5%
Monette PD	143	153	1488	2691	-7%	-45%
TOTALS	950	874	10,802	12,037	9%	-10%

UNIFORM PATROL DIVISION

The UPD is responsible for responding to calls into the Emergency - 911 Division by civilians and are normally the first responders. Jonesboro is divided into 6 patrol districts. Officers from UPD are

assigned to a district and work the same district every shift. In addition, when a Traffic Officer is not available, a UPD Officer will respond to traffic accidents and assist in directing traffic when necessary.

Incidents	This Month	This Month Last Year	YTD	Last YTD	Change By Month	Change YTD
Patrol Activities	6,958	6,423	84,727	74,281	8%	14%
Complaints / Calls	4,677	3,886	51,124	45,521	20%	12%
Assists	649	985	12,857	12,816	-34%	0%
Incident Reports	818	805	11,567	10,679	2%	8%
Street Accidents	82	97	900	883	-15%	2%
Private Property Accidents	37	35	451	490	6%	-8%
Traffic Stops	2,281	1,853	25,563	22,174	23%	15%
Traffic Citations	453	559	7,445	7,336	-19%	1%
Written Warnings	1,064	882	10,588	7,700	21%	38%
DWI	32	25	429	277	28%	55%
Mis. Arrests	447	421	5,471	5,660	6%	-3%
Felony Arrests	113	83	1,154	1,139	36%	1%
Warrants Served	1,093	1,123	14,464	16,358	-3%	-12%
Alarms	400	364	4,151	3,666	10%	13%
TOTALS	19,104	17,541	230,891	208,980	9%	10%
Hours Worked	7,614	8,941	101,510	107,791	-15%	-6%

PROWL

The Prowl unit is a uniformed street crimes unit specializing in criminal patrol, narcotics enforcement, gang investigation, and prostitution activity. The unit conducts directed patrols, investigates citizen

complaints of street-level criminal activity, and directly assists the 2nd Judicial Drug Task Force. PROWL also assists any division within the Jonesboro Police Department at any time when needed.

MONTHLY REPORT November 2013

December 10, 2013

Incidents	This Month	This Month Last Year	YTD	Last YTD	Change By Month	Change YTD
Street Accidents	0	0	0	0	N/C	N/C
Private Property Accidents	0	0	2	1	N/C	100%
Traffic Citations	23	14	260	336	64%	-23%
DWI	0	0	0	1	N/C	-100%
Mis. Arrests	66	160	1,236	2,173	-59%	-43%
Felony Arrests	11	26	291	324	-58%	-10%
Drug Arrests	13	28	291	274	-54%	6%
Public Intoxication Arrests	0	0	0	1	N/C	-100%
Calls For Service	50	88	790	1,118	-43%	-29%
Alarms	0	0	0	0	N/C	N/C
Parking Citations	0	0	0	0	N/C	N/C
Written Warnings	51	55	722	616	-7%	17%
Assists	0	0	0	0	N/C	N/C
TOTALS	214	371	3,592	4,844	-42%	-26%
Value of Drugs Seized	\$ 3,300.00	\$ 2,650.00	\$ 101,730.00	\$ 200,835.00	25%	-49%
Value of Asstes Seized	\$ 6,767.00	\$ 400.00	\$ 41,044.00	\$ 34,218.00	1592%	20%
Patrol Miles	5,500	7,000	81,400	67,350	-21%	21%

CRIMINAL INVESTIGATIVE DIVISION

The CID is responsible for conducting follow-up investigations into criminal acts reported to the Jonesboro Police Department. The primary goal is to collect and present evidence that conclusively leads

to a successful arrest. Additionally, CID is charged with clearing additional crimes, recovering stolen property, preventing additional crimes, and gathering intelligence information.

Investigations	This Month	This Month Last Year	YTD	Last YTD	Change By Month	Change YTD
Criminal Investigations Assigned	130	70	1359	755	86%	80%
Criminal Investigations Closed	60	58	937	600	3%	56%
Cleared by Arrests	43	43	568	418	0%	36%
Unfounded	3	9	115	70	-67%	64%
Exceptionally Cleared	8	2	144	47	300%	206%
Filed With Prosecutors Office	4	4	74	49	0%	51%
Crimes Against Persons	This Month	This Month Last Year	YTD	Last YTD	Change By Month	Change YTD
Criminal Investigations Closed	16	17	296	192	-6%	54%
Cleared by Arrests	12	14	190	148	-14%	28%
Unfounded	1	3	44	17	-67%	159%
Exceptionally Cleared	2	0	41	11	N/C	273%
Filed With Prosecutors Office	1	0	21	16	N/C	31%
Property Crimes	This Month	This Month Last Year	YTD	Last YTD	Change By Month	Change YTD
Criminal Investigations Assigned	88	49	885	521	80%	70%
Criminal Investigations Closed	34	39	528	362	-13%	46%
Unfounded	2	6	57	44	-67%	30%
Exceptionally Cleared	5	1	93	34	400%	174%
Filed With Prosecutors Office	0	4	32	24	-100%	33%
Crimes Against Children	This Month	This Month Last Year	YTD	Last YTD	Change By Month	Change YTD
Criminal Investigations Assigned	11	4	107	22	175%	386%
Criminal Investigations Closed	8	2	77	33	300%	133%
Cleared by Arrests	4	1	32	12	300%	167%
Unfounded	0	0	15	9	N/C	67%

MONTHLY REPORT November 2013

10 December 2013

Filed With Prosecutors Office	3	0	21	10	N/C	110%
Miscellaneous Investigations Assigned	2		16	10	N/C	60%
Miscellaneous Investigations Cleared	2		29	22	N/C	32%
FINGERPRINTS	This Month	This Month Last Year	YTD	Last YTD	Change By Month	Change YTD
Rolled for the Public	91	63	1931	1240	44%	56%

WARRANTS

The Warrants Division is responsible for serving warrants, criminal summonses, and subpoenas that are issued by the District Court. On city court days, the Warrants Division provides a bailiff for court and a transport officer. In addition, this Division is

responsible for transporting wanted persons arrested in other jurisdictions back to Jonesboro. The STEP program operates within this division and is a grant-funded operation in which officers can get paid overtime to enforce the safety belt law.

Arrests	This Month	This Month Last Year	YTD	Last YTD	Change By Month	Change YTD
Misdemeanor	1	632	4845	11976	-100%	-60%
Felony	2	0	6	4	N/C	50%
Total Arrests	3	632	4851	11980	-100%	-60%

Warrants by Activity	This Month	This Month Last Year	YTD	Last YTD	Change By Month	Change YTD
Subpoenas	539	442	5796	5254	22%	10%
Commitments	6	0	59	21	N/C	181%
Traffic Citations	1	0	13	21	N/C	-38%
Complaints	3	0	43	12	N/C	258%
Assist	0	1	3	2	-100%	50%
Alarms	0	1	0	1	-100%	-100%

Hours by Activity	This Month	This Month Last Year	YTD	Last YTD	Change By Month	Change YTD
SI Criminal	168.5	175.5	1984.65	2589.5	-4%	-23%
Court	91.5	75.5	1149.17	1386.67	21%	-17%
Prisoner Transport	54.5	11	427.67	307	395%	39%

Hours Worked	This Month	This Month Last Year	YTD	Last YTD	Change By Month	Change YTD
Regular Hours Worked	552.5	461	6083.5	8774	20%	-31%
Overtime Hours Worked	12	1	77.3	62	1100%	25%
TOTAL Hours Worked	564.5	462	6160.8	8836	22%	-30%

Mileage	This Month	This Month Last Year	YTD	Last YTD	Change By Month	Change YTD
Total Mileage	3791	1873	34539	25815	102%	34%

STEP	This Month	This Month Last Year	YTD	Last YTD	Change By Month	Change YTD
DWI Arrest	0	0	0	8	N/C	-100%
DUI Arrest	0	0	0	0	N/C	N/C
Traffic Citations	59	95	184	1960	-38%	-91%
Felony Arrests	0	0	1	7	N/C	-86%
Drug Arrests	0	0	0	2	N/C	-100%
STEP TOTALS	59	95	185	1977	-38%	-91%
STEP Hours Worked	62	56	197	1180.5	11%	-83%
STEP Miles Driven	385	275	1161	6493.5	40%	-82%

MONTHLY REPORT November 2013

10 December 2013

DRUG TASK FORCE

The DTF is responsible for investigating major drug traffickers in the area, including all types of illegal drugs.

The DTF works closely with local, state, and federal agencies to eradicate drugs from the community.

INVESTIGATIONS	This Month	This Month Last Year	YTD	Last YTD	Change By Month	Change YTD
Opened	19	19	227	274	0%	-17%
Closed	17	19	163	210	-11%	-22%
TOTAL	36	38	390	484	-5%	-19%
With Nexus to Jonesboro	This Month	This Month Last Year	YTD	Last YTD	Change By Month	Change YTD
Opened	13	18	188	243	-28%	-23%
Closed	0	0	0	0	N/C	N/C
TOTAL	13	18	188	243	-28%	-23%
Outside Jonesboro (No Known Nexus)	This Month	This Month Last Year	YTD	Last YTD	Change By Month	Change YTD
Opened	0	1	6	12	1300%	-50%
Closed	0	0	0	0	0%	N/C
TOTAL	0	1	6	12	-100%	-50%
ASSISTANCE RENDERED	This Month	This Month Last Year	YTD	Last YTD	Change By Month	Change YTD
Assist to Outside Agencies	0	0	1	64	N/C	-98%
Assist to Jonesboro UPD/CID	7	8	82	118	-13%	-31%
ARRESTS	This Month	This Month Last Year	YTD	Last YTD	Change By Month	Change YTD
Miscellaneous	14	6	75	65	133%	15%
Felony	27	26	288	312	4%	-8%
Marijuana	6	8	60	45	-25%	33%
Cocaine	2	1	11	16	100%	-31%
Crack Cocaine	1	0	9	26	N/C	-65%
Methamphetamine/ICE	11	9	107	95	22%	13%
LSD	0	0	0	0	N/C	N/C
Extasy (MDMA or Other Designer Drug)	0	0	3	0	N/C	N/C
Prescription	6	2	37	26	200%	42%
Opiates (Heroin, Opium)	0	0	0	2	N/C	-100%
Labs	0	1	4	8	-100%	-50%
All Other Drug Offenses	7	10	85	46	-30%	85%
ASSET FORFEITURE	This Month	This Month Last Year	YTD	Last YTD	Change By Month	Change YTD
Vehicles Seized (No.)	0	0	2	5	N/C	-60%
Value of Assets Seized (Includes Value of vehicles)	\$ -	\$ 1,895.00	\$ 14,941.00	\$ 123,211.00	-100%	-88%
Asset Value Awarded to Jonesboro PD (State)	\$ -	\$ -	\$ -	\$ -	N/C	N/C
Asset Value Awarded to Jonesboro PD (Federal)	\$ -	\$ -	\$ -	\$ -	N/C	N/C
Asset Value Awarded to Jonesboro PD (Total)	\$ -	\$ -	\$ -	\$ -	N/C	N/C
ARRESTS DEMOGRAPHICS	This Month	This Month Last Year	YTD	Last YTD	Change By Month	Change YTD
White	11	15	145	138	-27%	5%
African American	9	8	64	88	13%	-27%
Latino	0	0	5	47	N/C	-89%
Asian	0	0	0	0	N/C	N/C
Other/Bi-Racial	0	0	0	0	N/C	N/C
Male	13	18	143	193	-28%	-26%
Female	7	4	62	67	75%	-7%
White Male	7	12	88	86	-42%	2%
White Female	6	4	51	50	50%	2%
African American Male	8	8	54	76	0%	-29%
African American Female	1	0	10	12	N/C	-17%
Latino Male	0	0	4	33	N/C	-88%
Latino Female	0	0	0	2	N/C	-100%
Asian Male	0	0	0	0	N/C	N/C
Asian Female	0	0	0	0	N/C	N/C
Other/Bi-Racial Male	0	0	0	0	N/C	N/C
Other/Bi-Racial Female	0	0	0	0	N/C	N/C

MONTHLY REPORT November 2013

10 December 2013

TRAFFIC

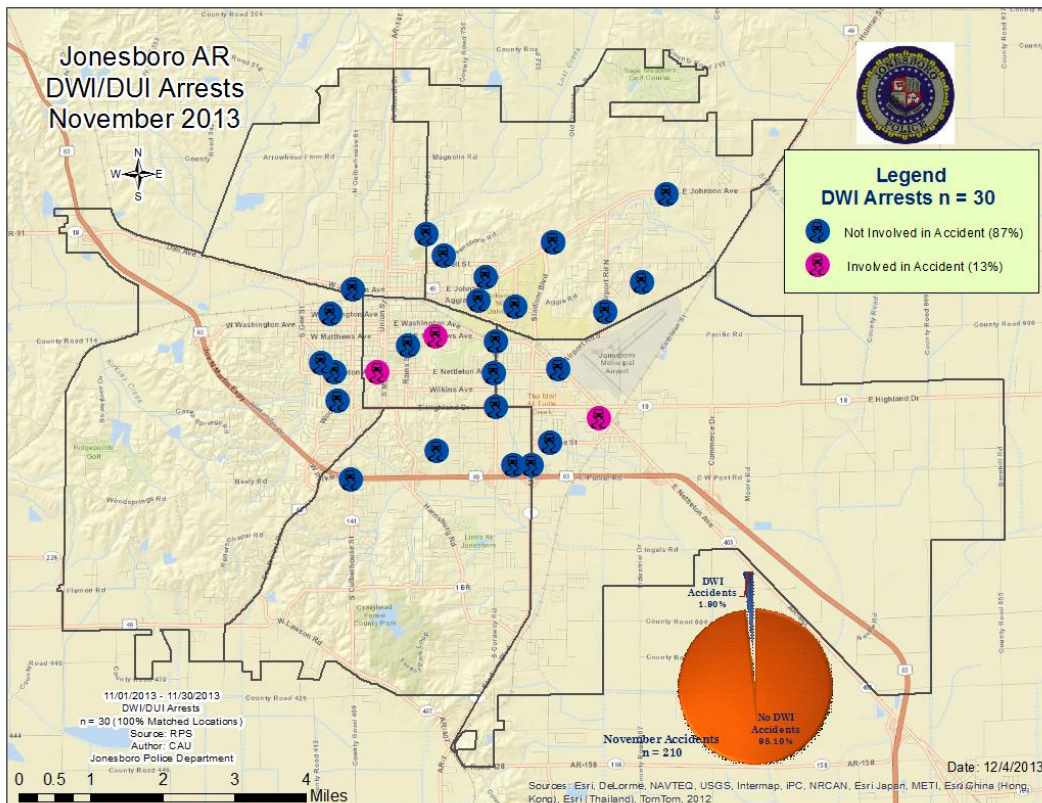
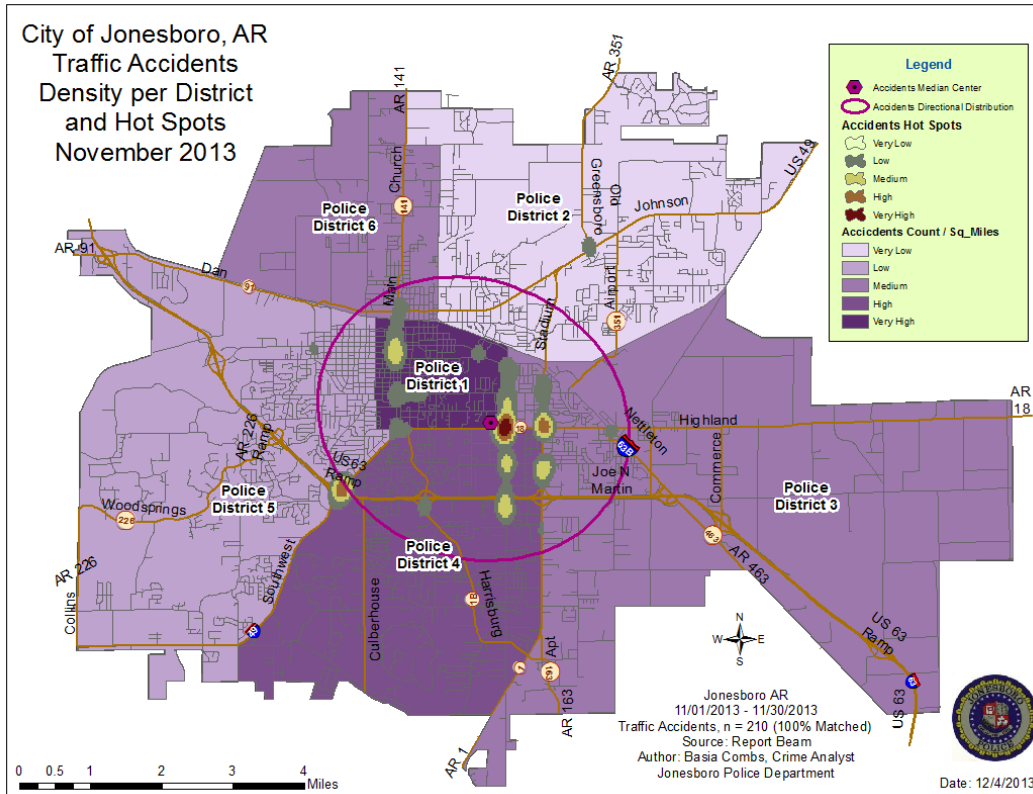
Comprised of three motor units and three Chargers, the Traffic Enforcement Unit responds to traffic accidents and provides increased enforcement in particularly challenging areas. This unit also provides

extra coverage for specific congestion problems and special events in the community. Last, they work details targeting specific issues, such as DWI enforcement and traffic safety checkpoints.

Incidents	This Month	This Month Last Year	YTD	Last YTD	Change By Month	Change YTD
Street Accidents	142	132	1542	1538	8%	0%
Private Property Accidents	31	37	463	415	-16%	12%
Traffic Citations	91	64	1125	1399	42%	-20%
DWI	2	4	15	32	-50%	-53%
Mis. Arrests	4	5	60	147	-20%	-59%
Felony Arrests	0	5	7	7	-100%	0%
Drug Arrests	0	0	0	0	N/C	N/C
Public Intoxication Arrests	0	0	0	0	N/C	N/C
Calls For Service	209	252	2566	2798	-17%	-8%
Alarms	0	0	0	0	N/C	N/C
Parking Citations	0	0	0	0	N/C	N/C
Written Warnings	201	65	1894	1152	209%	64%
TOTALS	680	564	7672	7488	21%	2%
Value of Asstes Seized	\$ -	\$ -	\$ -	\$ -	N/C	N/C
Patrol Miles	5,789	4,516	52,300	63,806	28%	-18%
Hours Worked	921.5	829	9221	9338.5	11%	-1%

MONTHLY REPORT November 2013

10 December 2013



MONTHLY REPORT November 2013

10 December 2013

ANIMAL CONTROL

The Animal Control Division is responsible for educating the public on safe and humane issues regarding animal treatment, enforcing all animal laws and ordinances, assisting the

public in resolving animal issues, and protecting the safety and welfare of the citizens and animals in this community.

Incident/Service	This Month	This Month Last Year	YTD	Last YTD	Change By Month	Change YTD
Barking Complaints	12	6	92	86	100%	7%
Bite Reports	3	3	51	77	0%	-34%
Door Hangers	44	50	550	754	-12%	-27%
Welfare Checks	46	35	642	821	31%	-22%
Advised of Rights	699	840	9877	10212	-17%	-3%
Incident Reports	3	0	27	47	N/C	-43%
Gone on Arrival	31	41	485	659	-24%	-26%
Complaints	651	679	7683	8140	-4%	-6%
Desk Complaints	1232	1267	16669	15990	-3%	4%
Captured Dogs	142	122	1652	1413	16%	17%
Captured Cats	18	19	220	128	-5%	72%
Captured Wildlife	19	25	447	353	-24%	27%
Chemical Captures	0	0	11	28	N/C	-61%
Traps	21	35	435	407	-40%	7%
Deceased Animals	51	52	572	826	-2%	-31%
Assist J.P.D.	5	0	63	58	N/C	9%
Assist C.S.O.	24	3	32	7	700%	357%
Public Relations	234	445	4657	5572	-47%	-16%

Incident/Service	This Month	This Month Last Year	YTD	Last YTD	Change By Month	Change YTD
CITATIONS ISSUED	56	20	457	442	180%	3%
WARNINGS ISSUED	151	72	1210	559	110%	116%
Physical Arrests	20	2	47	13	900%	262%
City Warrants Served	20	4	70	45	400%	56%
County Warrants Served	0	8	3	22	-100%	-86%
Felony Bench Warrants	0	0	3	2	N/C	50%
Euthanized	92	71	1122	844	30%	33%
Deceased Animals Landfill lbs.	1840	3060	40530	35316	-40%	15%
Wildlife Euthanized	19	25	447	341	-24%	31%
Sent to Rescue Centers	16	2	66	62	700%	6%
Adoptions	27	26	375	481	4%	-22%
Miles Driven	9,174	8091	100,790	79,434	13%	27%

FLEET MAINTNANCE

The Fleet Maintenance is responsible for all of the police vehicle maintenance upkeep, cleanliness, and purchasing. In addition, this

Division handles most of the purchasing of equipment, supplies, and uniforms for all of the Police Department.

MONTHLY REPORT November 2013

December 10, 2013

Repair Costs by Model Year	This Month	This Month Last Year	YTD	Last YTD	Change By Month	Change YTD
95-99	\$ -	\$ -	\$ -	\$ -	N/C	N/C
2000	\$ -	\$ -	\$ -	\$ 115.09	N/C	-100%
2001	\$ -	\$ -	\$ -	\$ 300.46	N/C	-100%
2002	\$ -	\$ -	\$ -	\$ -	N/C	N/C
2003	\$ -	\$ -	\$ 1,791.95	\$ -	N/C	N/C
2004	\$ 145.14	\$ -	\$ 2,113.93	\$ 1,892.84	N/C	12%
2005	\$ -	\$ -	\$ 257.01	\$ 1,000.39	N/C	-74%
2006	\$ 665.89	\$ 1,080.24	\$ 30,957.50	\$ 43,148.24	-38%	-28%
2007	\$ 981.47	\$ 2,377.04	\$ 28,192.04	\$ 17,304.88	-59%	63%
2008	\$ 582.17	\$ 156.09	\$ 7,750.62	\$ 5,032.48	273%	54%
2009	\$ 11.66	\$ 793.23	\$ 5,233.54	\$ 4,286.78	N/C	N/C
2010	\$ -	\$ -	\$ 442.57	\$ 992.18	N/C	N/C
2011	\$ -	\$ 633.81	\$ 2,371.64	\$ 2,456.92	N/C	N/C
2012	\$ 186.34	\$ -	\$ 186.34	\$ -	N/C	N/C
2013	\$ 163.97	n/a	\$ 580.13	n/a	N/C	N/C
Totals	\$ -	n/a	\$ -	n/a	N/C	N/C

Routine Preventative Maintenance by Model Year	This Month	This Month Last Year	YTD	Last YTD	Change By Month	Change YTD
95-99	\$ -	\$ -	\$ 174.13	\$ 488.54	N/C	-64%
2000	\$ -	\$ -	\$ 29.00	\$ 20.00	N/C	45%
2001	\$ -	\$ -	\$ 186.59	\$ -	N/C	N/C
2002	\$ -	\$ -	\$ 20.00	\$ 100.46	N/C	-80%
2003	\$ -	\$ 193.00	\$ 367.59	\$ 489.50	-100%	-25%
2004	\$ 20.00	\$ 84.18	\$ 757.94	\$ 419.63	-76%	81%
2005	\$ 128.50	\$ -	\$ 1,678.82	\$ 1,197.24	N/C	40%
2006	\$ 245.35	\$ 495.00	\$ 11,963.20	\$ 16,861.64	-39%	-29%
2007	\$ 279.70	\$ 697.83	\$ 12,430.89	\$ 9,872.79	-60%	26%
2008	\$ 100.00	\$ 254.00	\$ 4,459.59	\$ 6,081.60	-61%	-27%
2009	\$ 1,673.87	\$ 322.78	\$ 7,037.36	\$ 8,298.14	N/C	N/C
2010	\$ 20.00	\$ 231.07	\$ 1,847.49	\$ 4,072.82	N/C	N/C
2011	\$ 814.60	\$ 429.87	\$ 9,751.69	\$ 2,661.37	N/C	N/C
2012	\$ 83.83	\$ -	\$ 667.25	\$ 598.40	N/C	N/C
2013	\$ 20.00	n/a	\$ 1,451.40	n/a	N/C	N/C
Totals	\$ 457.80	n/a	\$ 457.80	n/a	N/C	N/C

RECORDS

The Records Division is responsible for providing administrative and clerical support to the department. Major responsibilities include entering the accident and incident reports and tickets into the records database management system, assisting the general

public for report requests, performing criminal backgrounds, serving as a switchboard at times, performing validations, and setting up and managing the payment plans out of court.

RECORDS	This Month	This Month Last Year	YTD	Last YTD	Change By Month	Change YTD
Incident/Arrest Reports Processed	1221	1200	13666	13667	2%	0%
Accident Reports Processed	212	217	2345	2351	-2%	0%
Citations Processed	3401	2981	36434	43998	14%	-17%
Warnings Processed	608	688	9361	9345	-12%	0%
Backgrounds	12	10	177	208	20%	-15%
Fingerprints	0	63	639	1240	-100%	-48%
Photos	5	0	12	8	N/C	50%
Accident Requests	91	110	1179	1311	-17%	-10%
Accident Requests Online	138	135	1,460	1,287	2%	13%

MONTHLY REPORT November 2013

10 December 2013

PROFESSIONAL STANDARDS

The Office of Professional Standards, a unit within Administration, is charged with the compilation and updating of an extensive set of policies and procedures and providing a general operations guideline and code of conduct for officers to follow. In the event

that a member of the public does experience a negative interaction with an officer, mechanisms are in place for them to lodge a complaint. All complaints are reviewed and investigations completed in a timely manner.

Professional Standards	This Month	This Month Last Year	YTD	Last YTD	Change By Month	Change YTD
Opened (TOTAL)	5	2	42	64	150%	-34%
Closed	5	2	46	62	150%	-26%
Inquiries	4	2	37	52	100%	-29%
Formal Investigations	1	0	10	7	N/C	43%
Sustained	0	2	25	47	-100%	-47%
Not-Sustained	5	0	12	1	N/C	1100%
Exonerated	0	0	5	4	N/C	25%
Unfounded	0	0	6	12	N/C	-50%

END OF REPORT



Contact Information

Basia Combs, MPA, CCIA | Crime Analyst | Office of Crime Analysis & Criminal Intelligence
Jonesboro Police Department | 410 W Washington Ave | Jonesboro, AR 72401
Ph: 870-336-7196 | E-mail: bcombs@jonesboro.org | www.jonesboropolice.com
