

# JONESBORO POLICE DEPARTMENT

## Monthly Report

### September 2013

#### **IN THIS REPORT**

<b>CRIME ANALYSIS .....</b>	<b>1</b>
Total Crime .....	2
Crimes against Person .....	3
Property Crimes .....	4
Crimes of Proactive Policing	5
Other Crimes.....	6
Arrests Demographics .....	7
<b>EMERGENCY 911 .....</b>	<b>9</b>
<b>UPD .....</b>	<b>10</b>
<b>_PROWL .....</b>	<b>10</b>
<b>CID .....</b>	<b>11</b>
<b>WARRANTS .....</b>	<b>12</b>
<b>DRUG TASK FORCE ....</b>	<b>13</b>
<b>TRAFFIC .....</b>	<b>14</b>
Maps .....	15
<b>ANIMAL CONTROL .....</b>	<b>16</b>
<b>FLEET MAINTENANCE</b>	<b>16</b>
<b>RECORDS .....</b>	<b>17</b>
<b>PROFESSIONAL</b>	
<b>STANDARDS .....</b>	<b>18</b>

*The purpose of the Jonesboro Police Department Monthly Report is to compile data into one integrated report for review, allowing for a seamless flow of information for better decision-making. After each department collates their monthly numbers and sends it to the Office of Crime Analysis, it is organized into sections of departmental data, analyzed and packaged, and finally disseminated to department heads, the Chief of Police, the City Mayor, and the City Council. Major sections include Crime Analysis, Emergency 911, Uniform Police Division, Prowl, Criminal Investigative Division, Warrants, Drug Task Force, Traffic, Parking Enforcement, Animal Control, Fleet Maintenance, Records, and Professional Standards.*

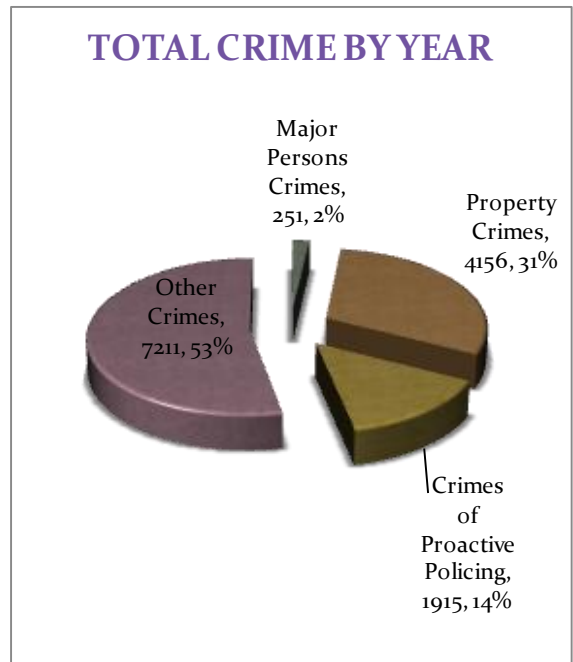
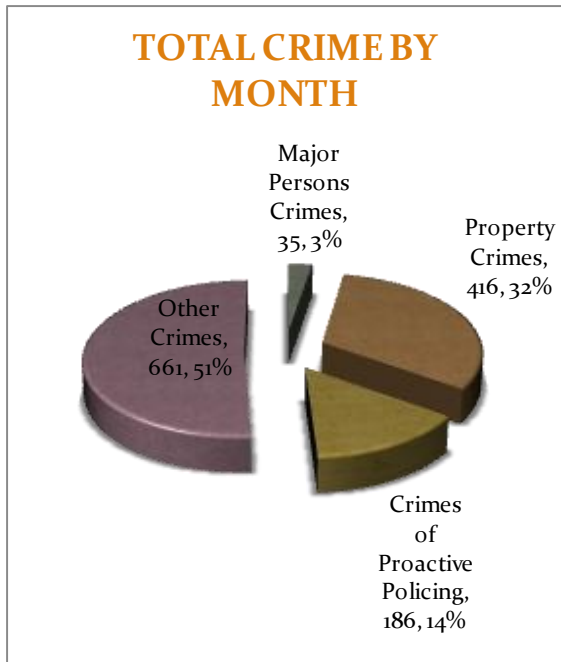
#### **CRIME ANALYSIS**

The Crime Analysis division consists of one Crime Analyst and one part-time Crime Analyst Assistant. The Crime Analyst position is responsible for the analysis and dissemination of crime activity data and the collection and maintenance of crime intelligence information for the city of Jonesboro. Additionally, the Crime Analyst is charged with providing the department with current and accurate crime maps, presenting crime activity data to audiences of interest, and with responding to requests for crime data from civilians and departmental staff. Data exported from this division is used by field agents for more effective, efficient policing, administration for improved staffing decisions, and the Mayor's office for community decision making and enhanced public relations. The following section is broken down into Total Crime, Crimes against Persons, Property Crimes, Crimes of Proactive Policing, Other Crimes, Arrest Demographics, and Total Crime Monthly Comparison.

**TOTAL CRIME**

The crime activity for the month of September 2013 was at a total of 1,298 NIBRIS reportable offenses, a -10% decrease, comparing to the total of offenses reported in September of the last year. With Jonesboro population estimated to be equal to 69,856, the crime rate in September of this year was at 19 crimes per 1,000 population, comparing to 21 crimes per 1,000 population last year<sup>1</sup>, a -12% decrease. As indicated on a pie chart below, Other Crimes absorb the majority, 51%, of this month's crime activity (n = 661). Property Crimes fall into a second place and comprise of 32% of all the crimes (n = 416). Following in third and fourth places are, respectively, Crimes of Proactive Policing, comprising of 14% (n = 186) of all the crimes, and Crimes against Persons, comprising of 3% (n = 35) of all the crimes this month.

Year to date data includes number of crimes from January through September 2013. A total of 13,533 NIBRIS reportable offenses were reported in 2013, a -4% decrease, comparing to the same period last year. The year to date crime rate amounts to 194 offenses per 1,000 population, compared to 206 offenses per 1,000 population last year (down 6%). To date this year, 53% of all the crimes is attributed to Other Crimes category (n = 7,211). Property Crimes amount to 31% of all the crimes (n = 4,156), Crimes of Proactive Policing comprise of 14% of all the crimes to date, where n = 1,915; Crimes against Persons comprise of 2% of a total year to date number of crimes (n = 251).

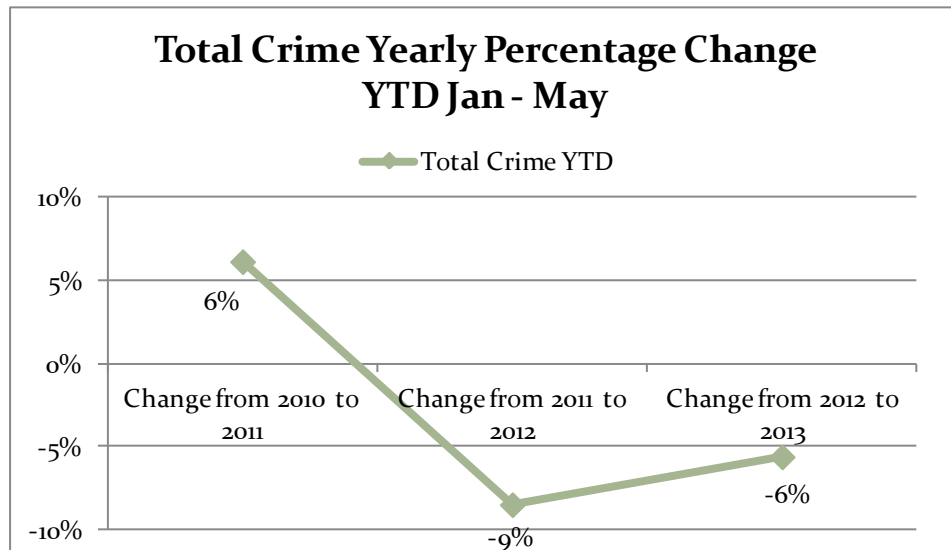
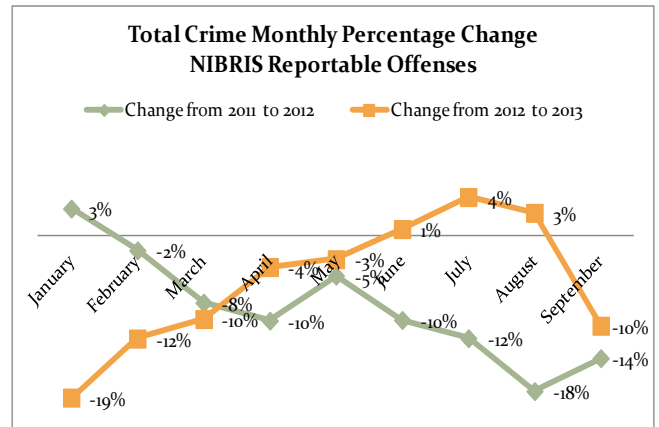
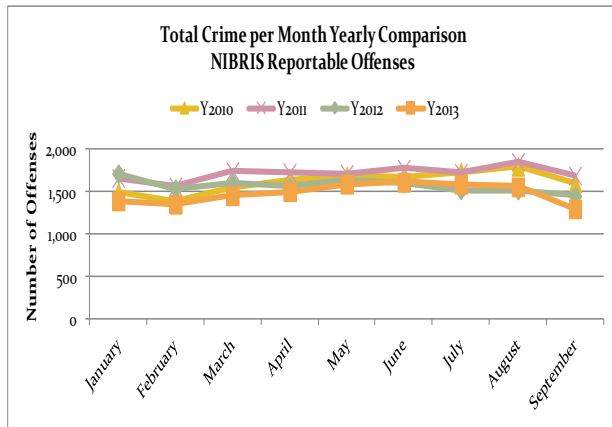


The line charts below depict frequencies of crime and a monthly and yearly percentage change from the last year.

<sup>1</sup> Note: Population numbers are based on 2011 & 2012 population estimate, where 2011 population estimate is 68,547.

# MONTHLY REPORT SEPTEMBER 2013

8 October 2013



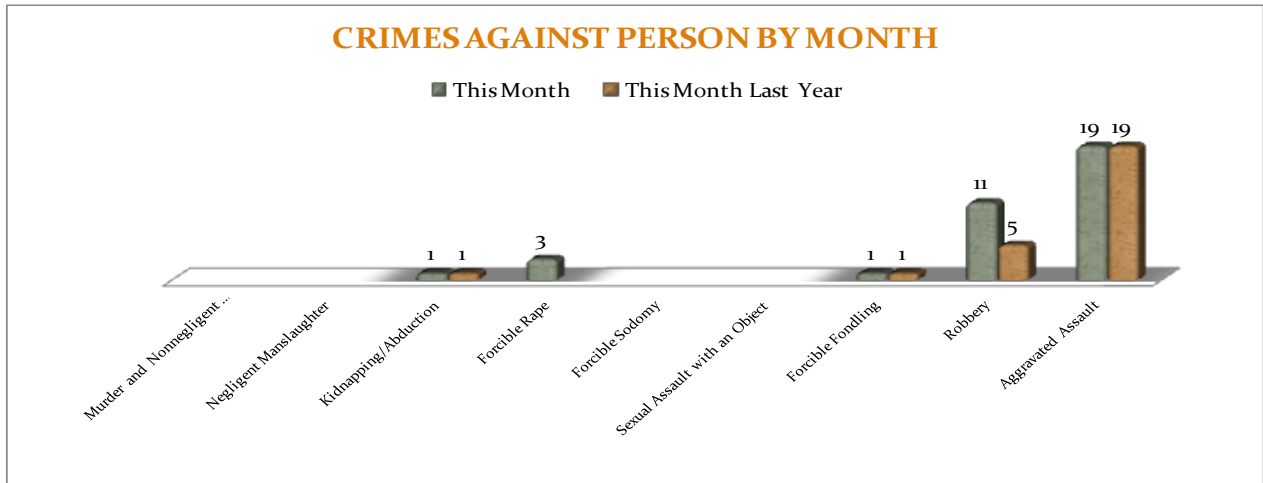
## CRIMES AGAINST PERSONS

There are 9 crimes that make up this section. There were a total of 35 offenses in this area in September this year, a 35% increase comparing to September of the last year. There were 3 more Forcible Rapes and 6

more Robberies. As demonstrated on the bar chart below, there are no other significant changes in frequencies for the crimes in this category.

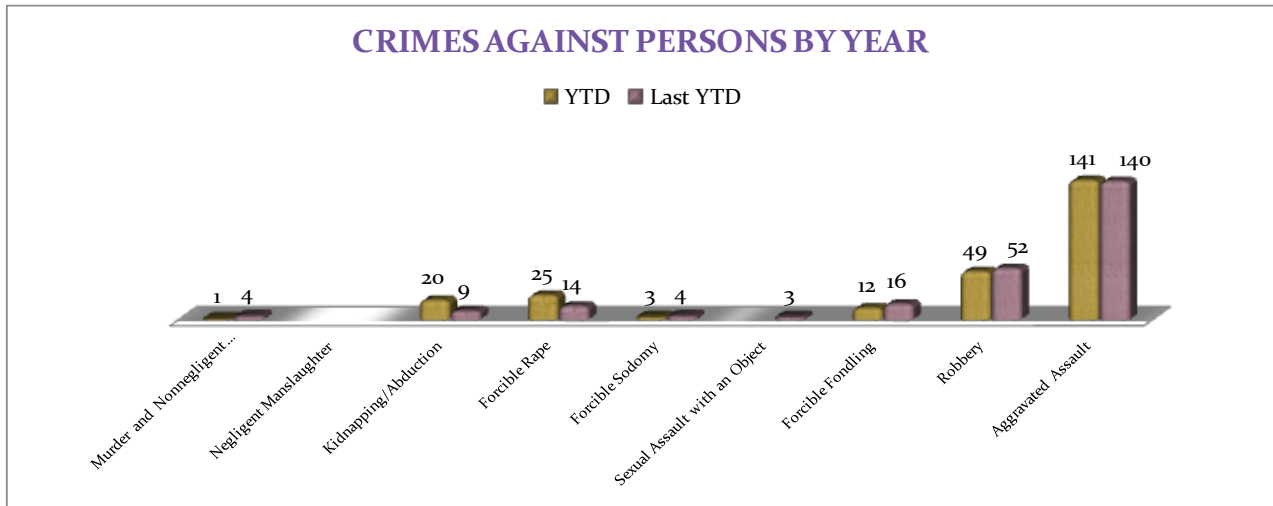
# MONTHLY REPORT SEPTEMBER 2013

8 October 2013



A bar graph below shows the year to date data for Crimes against Persons, which amounts to a total of 251 incidents for this category of crimes, which is up 4% comparing to the year to date data of last

year. There were 11 more Kidnapping/Abductions and 11 more Forcible Rapes compared with last year. There are no other significant changes in frequencies for the crimes in this category.



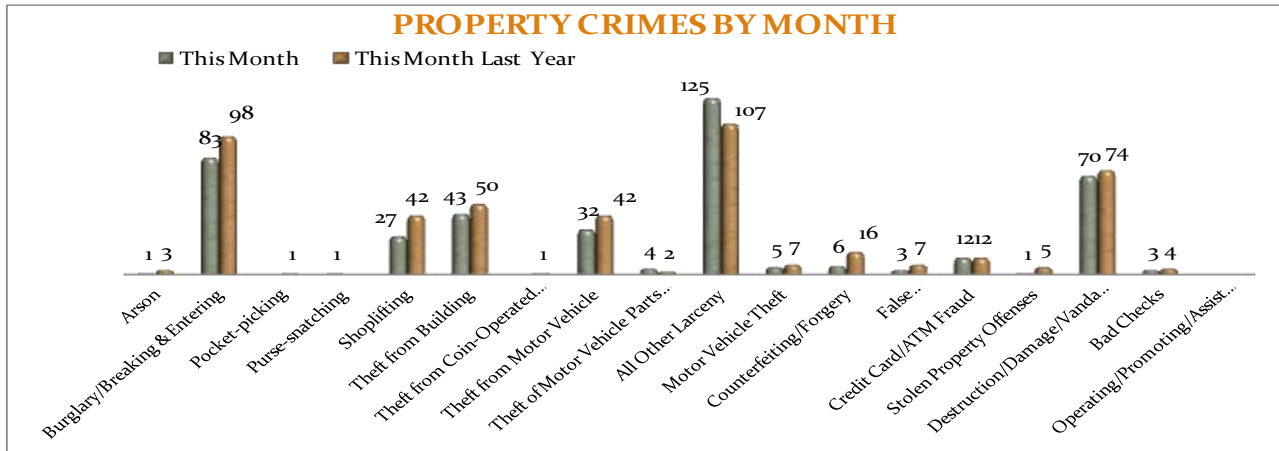
## PROPERTY CRIMES

This section displays the criminal activity for 18 crimes, all against property. This month, there were a total of 416 Property Crimes, a 12% decrease comparing to September of the last year. The data indicates change in Shoplifting (down 36%), Counterfeiting/Forgery is down 63%,

Burglary/Breaking & Entering is down 15%, Theft from Motor Vehicle is down 24%, while All Other Larceny is up 17% compared to September of last year. No other significant changes are noted this month for this crime category.

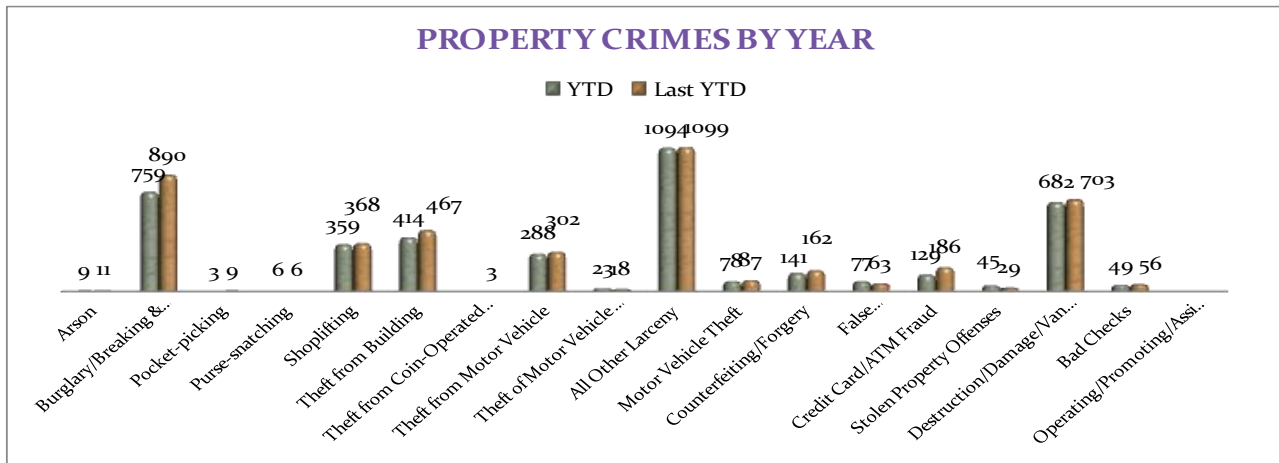
# MONTHLY REPORT SEPTEMBER 2013

8 October 2013



To date this year, 4,156 property offenses have occurred, a 7% decrease, comparing to the last year's data at this same time. The following significant changes are noted this year: Credit Card/ATM Fraud is down, -31%; Burglary/Breaking & Entering is down, -15%; Theft from Building is down, -11%, Theft from Motor Vehicle is down -5%,

Counterfeiting/Forgery is down -13% and Destruction/ Damage/Vandalism is down -3%. Stolen Property Offenses are up +55% and so is False Pretenses/Swindle/Confidence Game, up +22%. There are no other statistically significant changes noted for other offenses in this category.



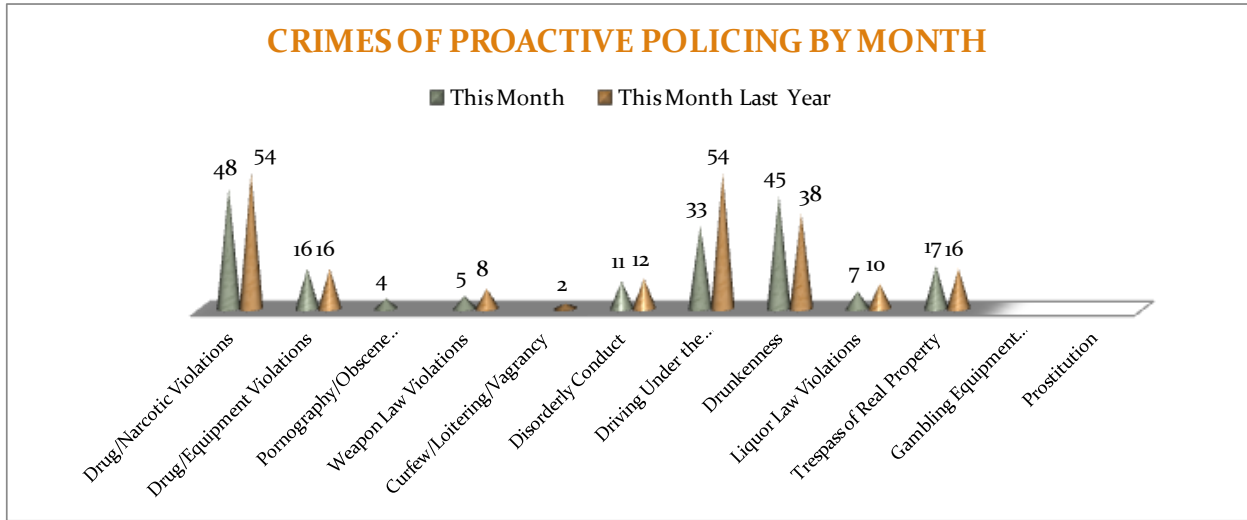
## CRIMES OF PROACTIVE POLICING

Crimes of Proactive Policing are those crimes that result from police officers actively policing the streets to combat certain types of street crime. As a chart below indicates, twelve crimes fall under this category. A total of 186 offenses have been reported this

month, an 11% decrease, comparing to September of the last year Driving under the Influence is down, -39%. There are no other statistically significant changes noted for other offenses in this category.

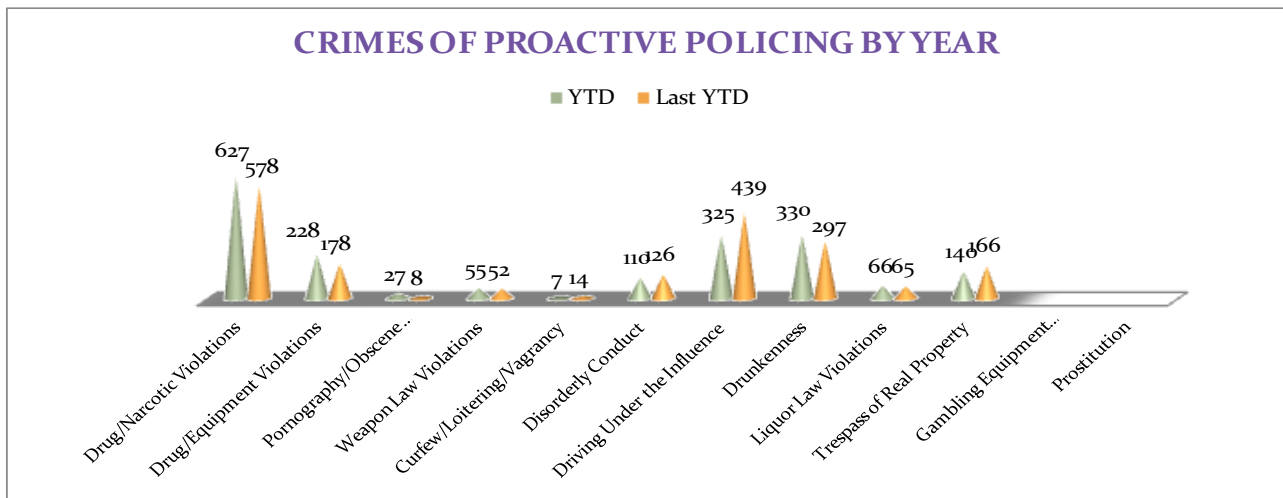
# MONTHLY REPORT SEPTEMBER 2013

8 October 2013



To date for the year 2013, there have been 1,915 crimes of proactive policing reported, no change when comparing to the last year's to date data. Drug/Narcotic Violations are up 8%, Drug/Equipment Violations are up 28%, Disorderly Conduct is down 13%, Trespass of

Real Property is down 16% and Drunkenness is up 11%, while Driving Under the Influence is down 26% and Pornography/Obscene Material is up by 19 offenses. There are no other statistically significant changes noted for other offenses in this category.



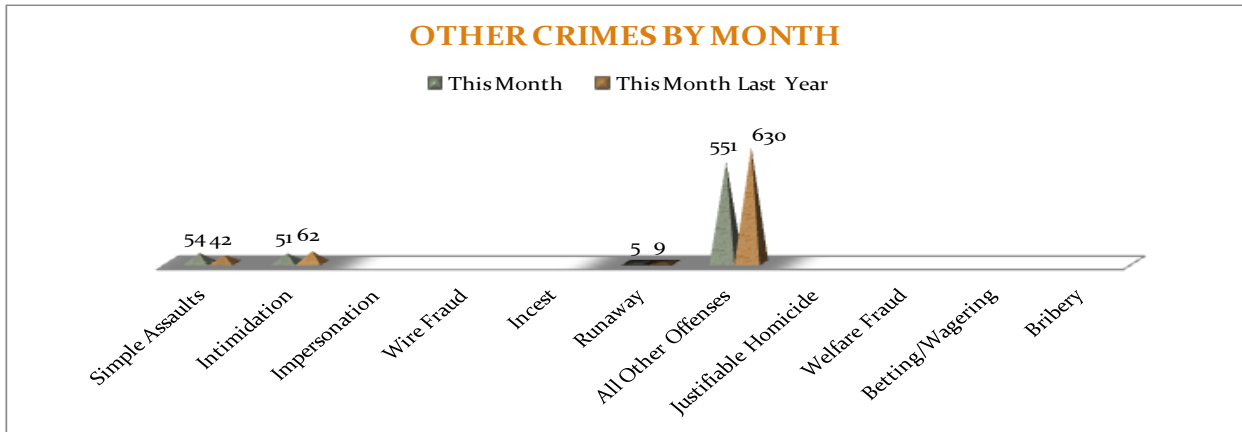
MONTHLY REPORT SEPTEMBER 2013

8 October 2013

**OTHER CRIMES**

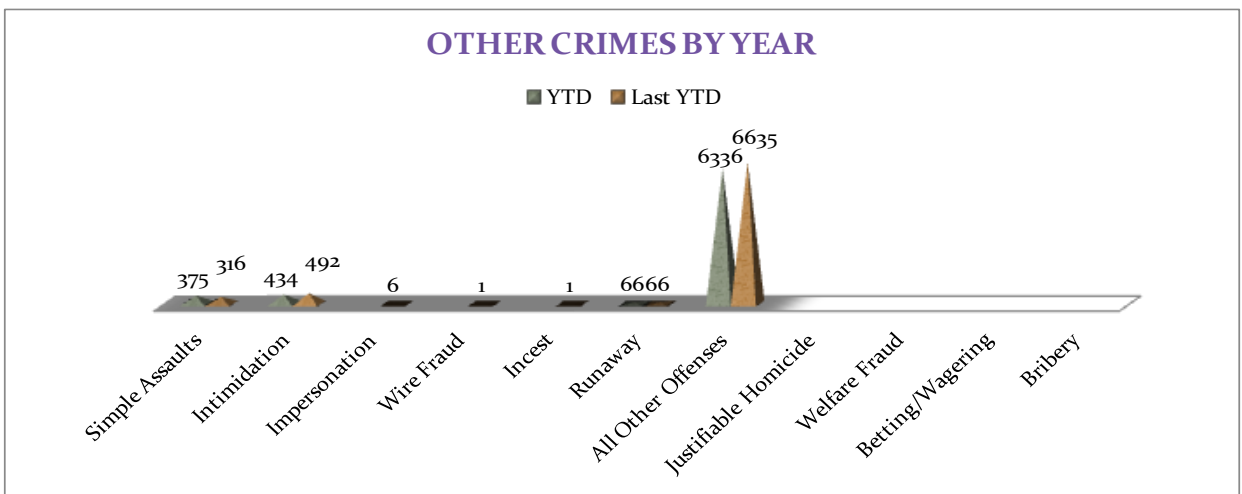
There are 11 crimes that fall into the Other Crimes category. This month, there have been a total of 661 Other Crimes reported, a 11% decrease, comparing to September of the last year. Simple Assaults increased by 29%

and Intimidation decreased by 18%, while All Other Offenses decreased by 13%. No other significant changes are noted in this category of crimes this month.



To date this year, there have been 7,211 Other Crimes offenses reported, a 4% decrease comparing to the last year's to date data. Intimidation offenses are down 11%, Simple Assaults increased by 19%, Intimidation is

down 12%, and All Other Offenses decreased by 5%. No other significant changes have been observed for other offenses within this category, comparing to the last year's data.

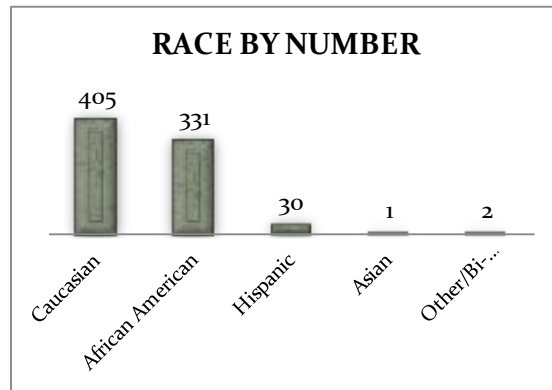
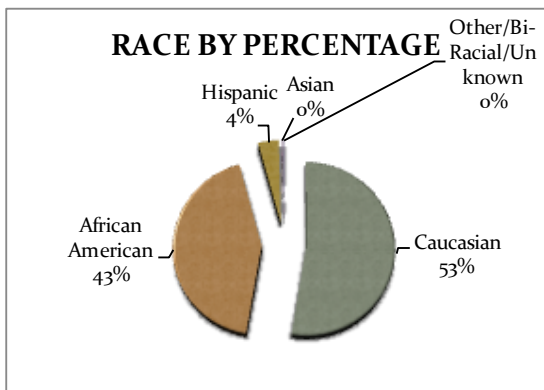
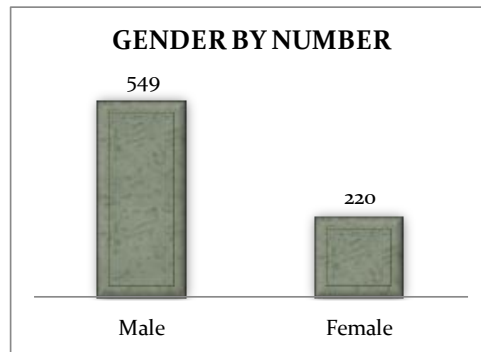
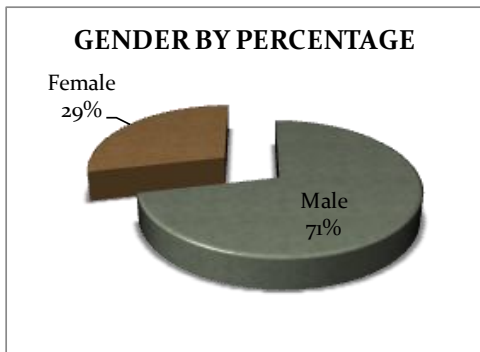


8 October 2013

### ARREST DEMOGRAPHICS

In September 2013, there were a total of 769 arrests carried out by the Jonesboro Police Department. Comparing with the last year's data for the month of September, there was no change in arrests this month. However, the rate of arrests per offense increased 12% comparing to the rate from the previous year. This section breaks down this month's arrests by race and gender. The majority of

arrestees, 71%, have been male ( $n = 549$ ), as opposed to 29% of female arrestees ( $n = 220$ ). As for the racial/ethnic composition, the majority of arrestees have been Caucasian (53%) and African American (43%) as opposed to Hispanic (4%), Asian (0%), or other/unknown/bi-racial (0%).



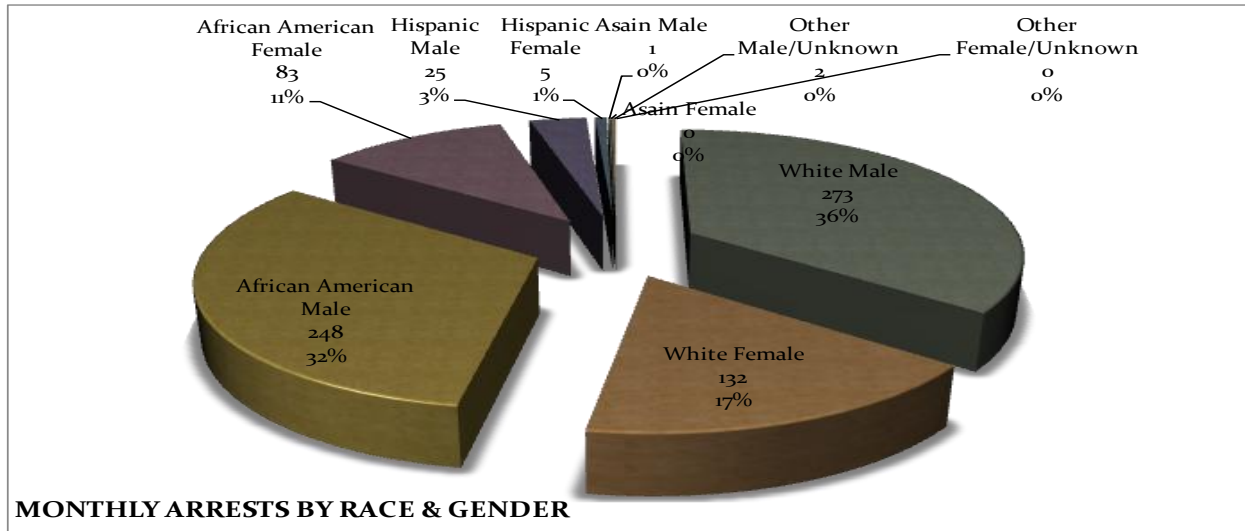
Caucasian males make up the majority, 36%, of arrestees this month ( $n = 273$ ). African American males make up 32% of arrestees for the month of September ( $n = 248$ ). Caucasian females make up 17% ( $n = 132$ ) and African American females make up 11% ( $n = 83$ ) of arrestees this month. Hispanic males

make up 3% ( $n = 25$ ), while Hispanic Females make up 1% of arestees this month ( $n = 5$ ). There were 1 Asain male and 2 Males of unknown race or ethnicity and 0 Asian female and 0 females of unknown race or ethnicity arested in September.



# MONTHLY REPORT SEPTEMBER 2013

8 October 2013



## EMERGENCY 911

Also known as Public Safety Answering Point (PSAP), the Emergency 911 Division is responsible for answering all calls from public for emergency assistance, accessing the needed information to best assist, and then assigning the most efficient and effective emergency response. In addition,

this division is responsible for setting priority call dispatching to field units including Police, Fire, and EMS. Emergency 911 also maintains all records for radio logs, calls for service, and other emergency service data collections.

Calls by Type	This Month	This Month Last Year	YTD	Last YTD	Change By Month	Change YTD
Land Line E911	733	772	7,154	7,074	-5%	1%
Cell Phone E911	4,776	4,421	39,341	38,044	8%	3%
Admin Lines-non emer	14,606	15,823	131,503	152,714	-8%	-14%
<b>TOTALS</b>	<b>20,115</b>	<b>21,016</b>	<b>177,998</b>	<b>197,832</b>	<b>-4%</b>	<b>-10%</b>
Calls by Agency	This Month	This Month Last Year	YTD	Last YTD	Change By Month	Change YTD
Jonesboro PD Calls	6,885	6,940	61,506	62,725	-1%	-2%
Craighead Cty Sheriff	1,327	1,167	11,910	11,476	14%	4%
Jonesboro Fire Dpt - dispatch	205	203	1,760	1,964	1%	-10%
Jonesboro Fire Dpt - Med Asst	136	121	1,251	1,074	12%	16%
Craighead Cty - Fire	49	57	376	629	-14%	-40%
Craighead Cty - 1st Responder	86	115	931	991	-25%	-6%
Emerson Ambulance	266	286	2,528	2,725	-7%	-7%
Medic One	311	316	2,853	2,610	-2%	9%
Air Evac	0	0	3	7	N/C	-57%
Coroner	1	0	31	29	N/C	7%
ARK State Police	6	0	88	113	N/C	-22%
Jonesboro Animal Control	5	0	25	18	N/C	39%
Wreckers Called	199	170	1,556	1,523	17%	2%
<b>TOTALS</b>	<b>9,476</b>	<b>9,375</b>	<b>84,818</b>	<b>85,884</b>	<b>1%</b>	<b>-1%</b>

## MONTHLY REPORT SEPTEMBER 2013

8 October 2013

Calls by Municipality	This Month	This Month Last Year	YTD	Last YTD	Change By Month	Change YTD
Bay PD	132	133	1195	1074	-1%	11%
Bono PD	241	293	2513	2452	-18%	2%
Brookland PD	199	168	1347	1516	18%	-11%
Caraway PD	106	106	643	1234	0%	-48%
Cash PD	159	31	640	282	413%	127%
Egypt PD	20	0	134	65	N/C	106%
Lake City PD	117	95	1186	1302	23%	-9%
Monette PD	147	135	1213	2412	9%	-50%
<b>TOTALS</b>	<b>1,121</b>	<b>961</b>	<b>8,871</b>	<b>10,337</b>	<b>17%</b>	<b>-14%</b>

### UNIFORM PATROL DIVISION

The UPD is responsible for responding to calls into the Emergency – 911 Division by civilians and are normally the first responders. Jonesboro is divided into 6 patrol districts. Officers from UPD are

assigned to a district and work the same district every shift. In addition, when a Traffic Officer is not available, a UPD Officer will respond to traffic accidents and assist in directing traffic when necessary.

Incidents	This Month	This Month Last Year	YTD	Last YTD	Change By Month	Change YTD
Calls for Service	6,885	6,942	70,595	63,359	-1%	11%
Complaints / Calls	4,408	4,112	41,568	36,452	7%	14%
Assists	973	1,499	11,572	11,035	-35%	5%
Incident Reports	770	887	8,918	7,700	-13%	16%
Street Accidents	81	90	770	705	-10%	9%
Private Property Accidents	30	36	396	361	-17%	10%
Traffic Stops	2,018	1,904	20,960	18,200	6%	15%
Traffic Citations	594	603	6,555	5,842	-1%	12%
Written Warnings	854	938	8822	7,800	-9%	13%
DWI	24	45	369	365	-47%	1%
Mis. Arrests	444	430	4,689	4,136	3%	13%
Felony Arrests	90	87	954	833	3%	15%
Warrants Served	778	1,194	12,680	11,930	-35%	6%
Alarms	335	378	3,415	3,113	-11%	10%
<b>TOTALS</b>	<b>18,284</b>	<b>19,145</b>	<b>192,263</b>	<b>171,831</b>	<b>-4%</b>	<b>12%</b>
Hours Worked	7,818	9,202	87,232	80,442	-15%	8%

### PROWL

The Prowl unit is a uniformed street crimes unit specializing in criminal patrol, narcotics enforcement, gang investigation, and prostitution activity. The unit conducts directed patrols, investigates citizen

complaints of street-level criminal activity, and directly assists the 2<sup>nd</sup> Judicial Drug Task Force. PROWL also assists any division within the Jonesboro Police Department at any time when needed.

# MONTHLY REPORT SEPTEMBER 2013

8 October 2013

Incidents	This Month	This Month Last Year	YTD	Last YTD	Change By Month	Change YTD
Street Accidents	0	0	0	0	N/C	N/C
Private Property Accidents	0	0	2	1	N/C	100%
Traffic Citations	25	33	211	300	-24%	-30%
DWI	0	0	0	1	N/C	-100%
Mis. Arrests	123	125	1,036	1,712	-2%	-39%
Felony Arrests	15	38	247	268	-61%	-8%
Drug Arrests	14	29	251	254	-52%	-1%
Public Intoxication Arrests	0	0	0	1	N/C	-100%
Calls For Service	85	93	682	920	-9%	-26%
Alarms	0	0	0	0	N/C	N/C
Parking Citations	0	0	0	0	N/C	N/C
Written Warnings	66	49	625	518	35%	21%
Assists	0	0	0	0	N/C	N/C
<b>TOTALS</b>	<b>328</b>	<b>367</b>	<b>3,054</b>	<b>3,975</b>	<b>-11%</b>	<b>-23%</b>
Value of Drugs Seized	\$ 10,640.00	\$ 51,500.00	\$ 94,180.00	\$ 192,835.00	-79%	-51%
Value of Asstes Seized	\$ -	\$ 200.00	\$ 33,453.00	\$ 33,818.00	-100%	-1%
Patrol Miles	7,500	6,550	68,500	55,750	15%	23%

## CRIMINAL INVESTIGATIVE DIVISION

The CID is responsible for conducting follow-up investigations into criminal acts reported to the Jonesboro Police Department. The primary goal is to collect and present evidence that conclusively leads

to a successful arrest. Additionally, CID is charged with clearing additional crimes, recovering stolen property, preventing additional crimes, and gathering intelligence information.

Investigations	This Month	This Month Last Year	YTD	Last YTD	Change By Month	Change YTD
Criminal Investigations Assigned	120	48	1077	617	150%	75%
Criminal Investigations Closed	74	46	737	464	61%	63%
Cleared by Arrests	51	31	460	328	65%	40%
Unfounded	8	6	90	48	33%	88%
Exceptionally Cleared	7	3	119	37	133%	222%
Filed With Prosecutors Office	6	3	58	38	100%	53%
<b>Crimes Against Persons</b>	<b>This Month</b>	<b>This Month Last Year</b>	<b>YTD</b>	<b>Last YTD</b>	<b>Change By Month</b>	<b>Change YTD</b>
Criminal Investigations Closed	25	17	243	159	47%	53%
Cleared by Arrests	18	14	162	123	29%	32%
Unfounded	5	1	32	11	400%	191%
Exceptionally Cleared	2	0	31	9	N/C	244%
Filed With Prosecutors Office	0	2	18	16	-100%	13%
<b>Property Crimes</b>	<b>This Month</b>	<b>This Month Last Year</b>	<b>YTD</b>	<b>Last YTD</b>	<b>Change By Month</b>	<b>Change YTD</b>
Criminal Investigations Assigned	78	31	701	422	152%	66%
Criminal Investigations Closed	43	24	423	268	79%	58%
Unfounded	3	3	47	30	0%	57%
Exceptionally Cleared	5	3	79	27	67%	193%
Filed With Prosecutors Office	3	1	24	14	200%	71%
<b>Crimes Against Children</b>	<b>This Month</b>	<b>This Month Last Year</b>	<b>YTD</b>	<b>Last YTD</b>	<b>Change By Month</b>	<b>Change YTD</b>
Criminal Investigations Assigned	5	1	76	15	400%	407%
Criminal Investigations Closed	4	1	61	24	300%	154%
Cleared by Arrests	1	0	25	10	N/C	150%
Unfounded	0	1	12	7	-100%	71%

# MONTHLY REPORT SEPTEMBER 2013

8 October 2013

Filed With Prosecutors Office	3	0	16	9	N/C	78%
Miscellaneous Investigations Assigned	3	1	12	8	200%	50%
Miscellaneous Investigations Cleared	2	4	23	19	-50%	21%
<b>FINGERPRINTS</b>	This Month	This Month Last Year	YTD	Last YTD	Change By Month	Change YTD
<b>Rolled for the Public</b>	148	180			n/a	n/a

## WARRANTS

The Warrants Division is responsible for serving warrants, criminal summonses, and subpoenas that are issued by the District Court. On city court days, the Warrants Division provides a bailiff for court and a transport officer. In addition, this Division is

responsible for transporting wanted persons arrested in other jurisdictions back to Jonesboro. The STEP program operates within this division and is a grant-funded operation in which officers can get paid overtime to enforce the safety belt law.

Arrests	This Month	This Month Last Year	YTD	Last YTD	Change By Month	Change YTD
Misdemeanor	8	1711	4840	10233	-100%	-53%
Felony	0	2	3	4	-100%	-25%
<b>Total Arrests</b>	<b>8</b>	<b>1713</b>	<b>4843</b>	<b>10237</b>	<b>-100%</b>	<b>-53%</b>
Warrants by Activity	This Month	This Month Last Year	YTD	Last YTD	Change By Month	Change YTD
Subpoenas	577	1139	4742	4299	-49%	10%
Commitments	4	1	46	21	300%	119%
Traffic Citations	0	2	9	19	-100%	-53%
Complaints	6	4	36	12	50%	200%
Assist	0	0	3	1	N/C	200%
Alarms	0	0	0	0	N/C	N/C
Hours by Activity	This Month	This Month Last Year	YTD	Last YTD	Change By Month	Change YTD
SI Criminal	208.5	488	1605.65	2169.5	-57%	-26%
Court	105.5	206	937.17	1172.67	-49%	-20%
Prisoner Transport	40.5	35.5	319.67	268.5	14%	19%
Hours Worked	This Month	This Month Last Year	YTD	Last YTD	Change By Month	Change YTD
Regular Hours Worked	615	1167	4848.5	7664	-47%	-37%
Overtime Hours Worked	9.5	5	56.3	57	90%	-1%
<b>TOTAL Hours Worked</b>	<b>624.5</b>	<b>1172</b>	<b>4904.8</b>	<b>7721</b>	<b>-47%</b>	<b>-36%</b>
Mileage	This Month	This Month Last Year	YTD	Last YTD	Change By Month	Change YTD
<b>Total Mileage</b>	<b>3410</b>	<b>4825</b>	<b>26974</b>	<b>21507</b>	<b>-29%</b>	<b>25%</b>
STEP	This Month	This Month Last Year	YTD	Last YTD	Change By Month	Change YTD
DWI Arrest	0	1	0	8	-100%	-100%
DUI Arrest	0	0	0	0	N/C	N/C
Traffic Citations	141	62	266	1671	127%	-84%
Felony Arrests	0	0	1	6	N/C	-83%
Drug Arrests	0	0	0	1	N/C	-100%
<b>STEP TOTALS</b>	<b>141</b>	<b>63</b>	<b>267</b>	<b>1686</b>	<b>124%</b>	<b>-84%</b>
<b>STEP Hours Worked</b>	<b>121.5</b>	<b>44</b>	<b>256.5</b>	<b>1086.5</b>	<b>176%</b>	<b>-76%</b>
<b>STEP Miles Driven</b>	<b>848</b>	<b>268</b>	<b>1624</b>	<b>5600.5</b>	<b>216%</b>	<b>-71%</b>

## MONTHLY REPORT SEPTEMBER 2013

8 October 2013

### DRUG TASK FORCE

The DTF is responsible for investigating major drug traffickers in the area, including all types of illegal drugs.

The DTF works closely with local, state, and federal agencies to eradicate drugs from the community.

INVESTIGATIONS	This Month	This Month Last Year	YTD	Last YTD	Change By Month	Change YTD
Opened	11	20	188	220	-45%	-15%
Closed	7	13	129	167	-46%	-23%
<b>TOTAL</b>	<b>18</b>	<b>33</b>	<b>317</b>	<b>387</b>	<b>-45%</b>	<b>-18%</b>
With Nexus to Jonesboro	This Month	This Month Last Year	YTD	Last YTD	Change By Month	Change YTD
Opened	7	20	155	203	-65%	-24%
Closed	0	0	0	0	N/C	N/C
<b>TOTAL</b>	<b>7</b>	<b>20</b>	<b>155</b>	<b>203</b>	<b>-65%</b>	<b>-24%</b>
Outside Jonesboro (No Known Nexus)	This Month	This Month Last Year	YTD	Last YTD	Change By Month	Change YTD
Opened	2	0	6	11	1300%	-45%
Closed	0	0	0	0	0%	N/C
<b>TOTAL</b>	<b>2</b>	<b>0</b>	<b>6</b>	<b>11</b>	<b>N/C</b>	<b>-45%</b>
ASSISTANCE RENDERED	This Month	This Month Last Year	YTD	Last YTD	Change By Month	Change YTD
Assist to Outside Agencies	3	6	0	64	-50%	-100%
Assist to Jonesboro UPD/CID	18	7	69	100	157%	-31%
ARRESTS	This Month	This Month Last Year	YTD	Last YTD	Change By Month	Change YTD
Miscellaneous	3	4	56	56	-25%	0%
Felony	18	48	229	255	-63%	-10%
Marijuana	2	5	50	34	-60%	47%
Cocaine	1	0	9	13	N/C	-31%
Crack Cocaine	0	2	8	22	-100%	-64%
Methamphetamine/ICE	6	5	87	63	20%	38%
LSD	0	0	0	0	N/C	N/C
Extasy (MDMA or Other Designer Drug)	0	0	3	0	N/C	N/C
Prescription	1	2	29	21	-50%	38%
Opiates (Heroin, Opium)	0	0	0	1	N/C	-100%
Labs	1	2	3	7	-50%	-57%
All Other Drug Offenses	2	4	70	32	-50%	119%
ASSET FORFEITURE	This Month	This Month Last Year	YTD	Last YTD	Change By Month	Change YTD
Vehicles Seized (No.)	0	3	2	4	-100%	-50%
Value of Assets Seized (Includes Value of vehicles)	\$ -	\$ 61,138.00	\$ 6,700.00	\$ 110,316.00	-100%	-94%
Asset Value Awarded to Jonesboro PD (State)	\$ -	\$ -	\$ -	\$ -	N/C	N/C
Asset Value Awarded to Jonesboro PD (Federal)	\$ -	\$ -	\$ -	\$ -	N/C	N/C
Asset Value Awarded to Jonesboro PD (Total)	\$ -	\$ -	\$ -	\$ -	N/C	N/C
ARRESTS DEMOGRAPHICS	This Month	This Month Last Year	YTD	Last YTD	Change By Month	Change YTD
White	7	22	126	106	-68%	19%
African American	2	3	48	66	-33%	-27%
Latino	0	31	4	47	-100%	-91%
Asian	0	0	0	0	N/C	N/C
Other/Bi-Racial	0	0	0	0	N/C	N/C
Male	4	37	120	150	-89%	-20%
Female	5	9	49	57	-44%	-14%
White Male	2	16	77	64	-88%	20%
White Female	5	7	41	40	-29%	3%
African American Male	2	3	41	53	-33%	-23%
African American Female	0	0	7	12	N/C	-42%
Latino Male	0	20	3	33	-100%	-91%
Latino Female	0	2	0	2	-100%	-100%
Asian Male	0	0	0	0	N/C	N/C
Asian Female	0	0	0	0	N/C	N/C
Other/Bi-Racial Male	0	0	0	0	N/C	N/C
Other/Bi-Racial Female	0	0	0	0	N/C	N/C

# MONTHLY REPORT SEPTEMBER 2013

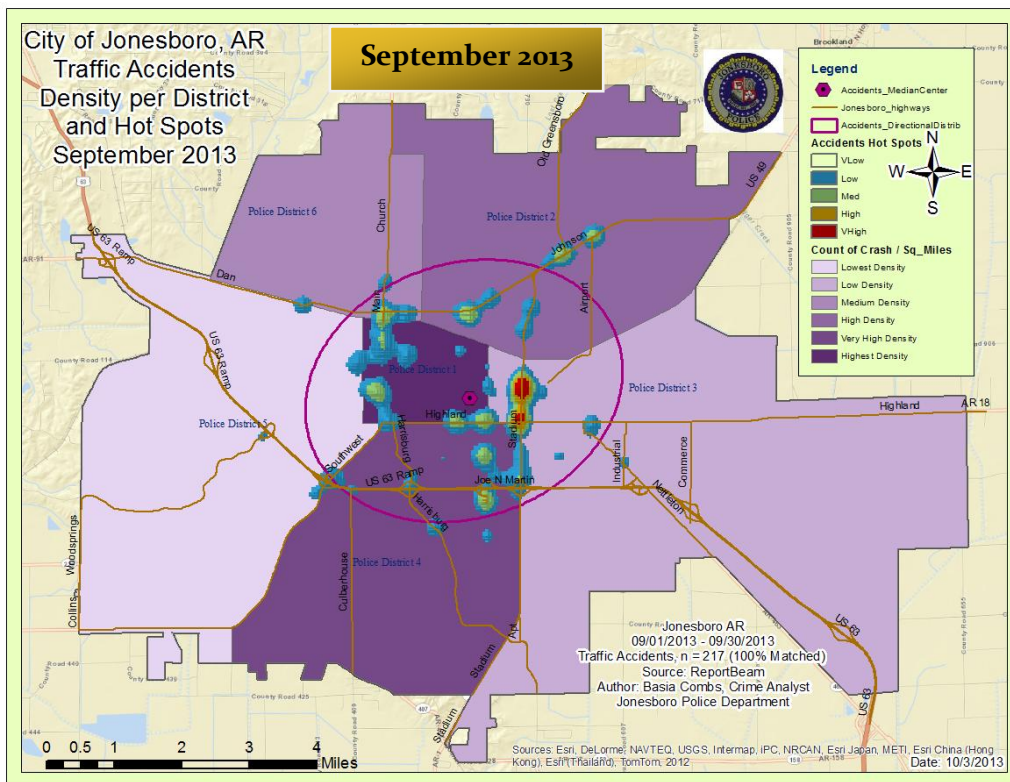
8 October 2013

## TRAFFIC

Comprised of three motor units and three Chargers, the Traffic Enforcement Unit responds to traffic accidents and provides increased enforcement in particularly challenging areas. This unit also provides

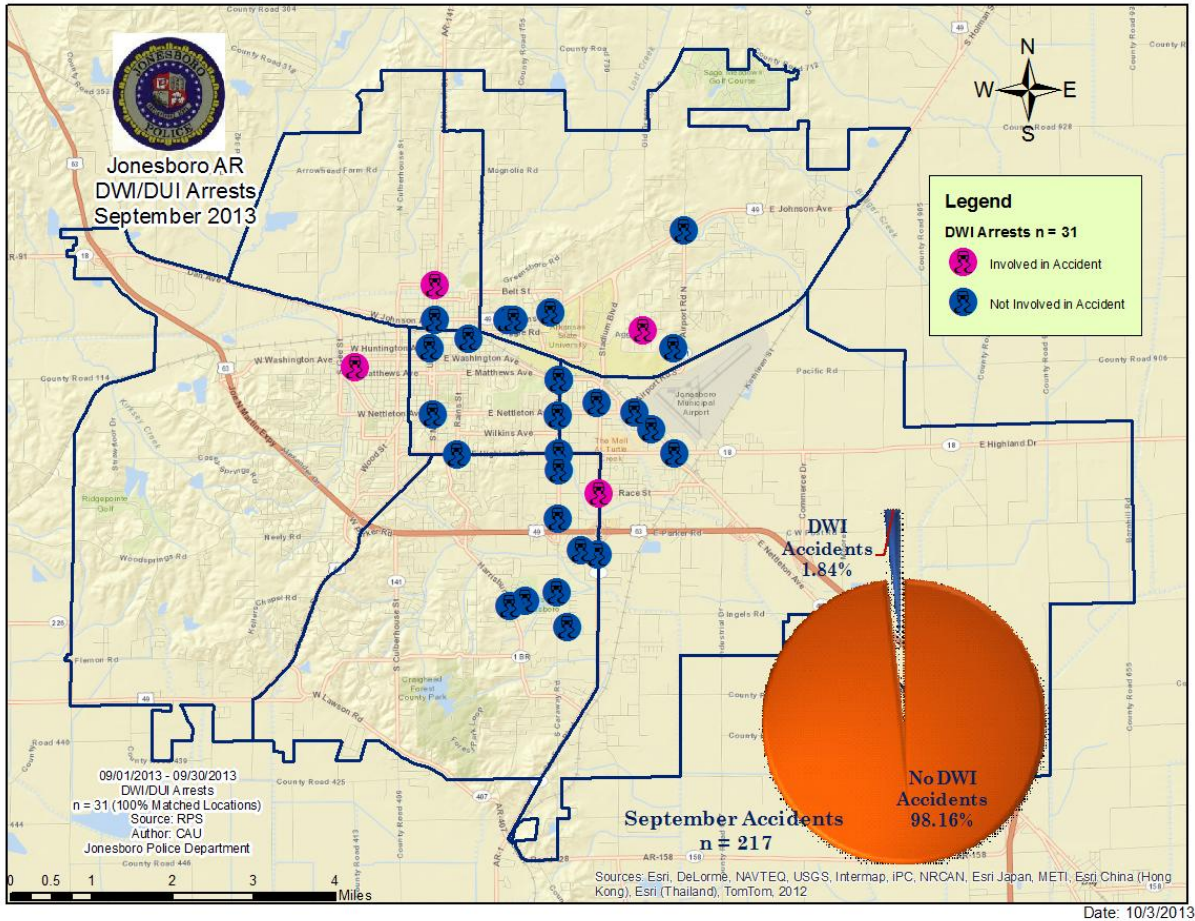
extra coverage for specific congestion problems and special events in the community. Last, they work details targeting specific issues, such as DWI enforcement and traffic safety checkpoints.

Incidents	This Month	This Month Last Year	YTD	Last YTD	Change By Month	Change YTD
Street Accidents	144	159	1206	1231	-9%	-2%
Private Property Accidents	52	39	388	334	33%	16%
Traffic Citations	97	142	854	1214	-32%	-30%
DWI	2	1	11	25	100%	-56%
Mis. Arrests	3	19	55	127	-84%	-57%
Felony Arrests	1	0	7	2	N/C	250%
Drug Arrests	0	0	0	0	N/C	N/C
Public Intoxication Arrests	0	0	0	0	N/C	N/C
Calls For Service	262	293	2062	2243	-11%	-8%
Alarms	0	0	0	0	N/C	N/C
Parking Citations	0	0	0	0	N/C	N/C
Written Warnings	85	143	1345	1004	-41%	34%
<b>TOTALS</b>	<b>646</b>	<b>796</b>	<b>5928</b>	<b>6180</b>	<b>-19%</b>	<b>-4%</b>
Value of Asstes Seized	\$ -	\$ -	\$ -	\$ -	N/C	N/C
Patrol Miles	4,417	6,246	39,603	53,452	-29%	-26%
Hours Worked	878	863	7290	7587.5	2%	-4%



# MONTHLY REPORT SEPTEMBER 2013

8 October 2013



## ANIMAL CONTROL

The Animal Control Division is responsible for educating the public on safe and humane issues regarding animal treatment, enforcing all animal laws and ordinances, assisting the

public in resolving animal issues, and protecting the safety and welfare of the citizens and animals in this community.

# MONTHLY REPORT SEPTEMBER 2013

8 October 2013

Incident/Service	This Month	This Month Last Year	YTD	Last YTD	Change By Month	Change YTD
Barking Complaints	9	7	73	65	29%	12%
Bite Reports	3	5	42	69	-40%	-39%
Door Hangers	42	38	451	653	11%	-31%
Welfare Checks	84	42	515	729	100%	-29%
Advised of Rights	817	1069	8177	7902	-24%	3%
Incident Reports	5	2	20	46	150%	-57%
Gone on Arrival	21	98	418	551	-79%	-24%
Complaints	617	713	6310	6825	-13%	-8%
Desk Complaints	1499	1643	13392	13370	-9%	0%
Captured Dogs	115	111	1352	1170	4%	16%
Captured Cats	29	18	170	100	61%	70%
Captured Wildlife	34	15	399	308	127%	30%
Chemical Captures	2	4	8	28	-50%	-71%
Traps	41	22	372	347	86%	7%
Deceased Animals	46	41	416	694	12%	-40%
Assist J.P.D.	3	3	50	55	0%	-9%
Assist C.S.O.	0	0	7	3	N/C	133%
Public Relations	555	444	4020	4893	25%	-18%
Incident/Service	This Month	This Month Last Year	YTD	Last YTD	Change By Month	Change YTD
CITATIONS ISSUED	32	29	348	413	10%	-16%
WARNINGS ISSUED	64	31	889	399	106%	123%
Physical Arrests	1	0	27	10	N/C	170%
City Warrants Served	3	0	50	39	N/C	28%
County Warrants Served	0	0	3	14	N/C	-79%
Felony Bench Warrants	0	0	3	2	N/C	50%
Euthanized	79	73	926	661	8%	40%
Deceased Animals Landfill lbs.	2880	3480	34750	30036	-17%	16%
Wildlife Euthanized	34	14	399	296	143%	35%
Sent to Rescue Centers	4	5	34	59	-20%	-42%
Adoptions	22	36	325	409	-39%	-21%
Miles Driven	7,891	6298	80,166	64,168	25%	25%

## FLEET MAINTNANCE

The Fleet Maintenance is responsible for all of the police vehicle maintenance upkeep, cleanliness, and purchasing. In addition, this

Division handles most of the purchasing of equipment, supplies, and uniforms for all of the Police Department.

Repair Costs by Model Year	This Month	This Month Last Year	YTD	Last YTD	Change By Month	Change YTD
95-99	\$ -	\$ -	\$ -	\$ -	N/C	N/C
2000	\$ -	\$ -	\$ -	\$ 115.09	N/C	-100%
2001	\$ -	\$ -	\$ -	\$ 300.46	N/C	-100%
2002	\$ -	\$ -	\$ -	\$ -	N/C	N/C
2003	\$ -	\$ -	\$ 1,791.95	\$ -	N/C	N/C
2004	\$ -	\$ -	\$ 1,968.79	\$ 1,822.92	N/C	8%
2005	\$ -	\$ -	\$ 257.01	\$ 1,000.39	N/C	-74%
2006	\$ 2,187.01	\$ 6,586.89	\$ 28,142.54	\$ 34,780.18	-67%	-19%
2007	\$ 3,096.69	\$ 650.40	\$ 25,196.46	\$ 10,285.72	376%	145%
2008	\$ 1,157.91	\$ 986.10	\$ 6,829.34	\$ 4,545.04	17%	50%
2009	\$ 710.78	\$ 433.37	\$ 3,549.42	\$ 2,326.26	N/C	N/C
2010	\$ -	\$ 479.68	\$ 442.57	\$ 992.18	N/C	N/C
2011	\$ 290.79	\$ 11.61	\$ 2,210.34	\$ 1,155.41	N/C	N/C
2012	\$ -	\$ -	\$ -	\$ -	N/C	N/C
2013	\$ -	n/a	\$ 53.80	n/a	N/C	N/C
<b>Totals</b>	<b>\$ 7,443.18</b>	<b>\$ 9,148.05</b>	<b>\$ 70,442.22</b>	<b>\$ 57,323.65</b>	<b>-19%</b>	<b>23%</b>



## MONTHLY REPORT SEPTEMBER 2013

8 October 2013

Routine Preventative Maintenance by Model Year	This Month	This Month Last Year	YTD	Last YTD	Change By Month	Change YTD
95-99	\$ -	\$ -	\$ 174.13	\$ 72.00	N/C	142%
2000	\$ -	\$ -	\$ 20.00	\$ 20.00	N/C	0%
2001	\$ -	\$ -	\$ 186.59	\$ -	N/C	N/C
2002	\$ -	\$ -	\$ 20.00	\$ 100.46	N/C	-80%
2003	\$ -	\$ -	\$ 347.59	\$ 276.50	N/C	26%
2004	\$ 40.00	\$ 20.00	\$ 717.94	\$ 335.45	100%	114%
2005	\$ 40.00	\$ -	\$ 1,490.32	\$ 1,105.24	N/C	35%
2006	\$ 226.50	\$ 577.25	\$ 10,095.60	\$ 12,577.56	-61%	-20%
2007	\$ 495.50	\$ 987.99	\$ 10,173.03	\$ 8,285.77	-50%	23%
2008	\$ 80.42	\$ 1,536.65	\$ 4,014.39	\$ 4,905.24	-95%	-18%
2009	\$ 542.28	\$ 743.83	\$ 4,542.23	\$ 7,218.37	N/C	N/C
2010	\$ 156.99	\$ 41.21	\$ 1,827.49	\$ 1,999.20	N/C	N/C
2011	\$ 319.00	\$ 302.00	\$ 8,474.09	\$ 1,897.50	N/C	N/C
2012	\$ -	\$ -	\$ 468.42	\$ 422.81	N/C	N/C
2013	\$ 187.31	n/a	\$ 1,291.40		N/C	N/C
<b>Totals</b>	<b>\$ 2,088.00</b>	<b>\$ 4,208.93</b>	<b>\$ 43,843.22</b>	<b>\$ 39,216.10</b>	<b>-50%</b>	<b>12%</b>

## RECORDS

The Records Division is responsible for providing administrative and clerical support to the department. Major responsibilities include entering the accident and incident reports and tickets into the records database management system, assisting the general

public for report requests, performing criminal backgrounds, serving as a switchboard at times, performing validations, and setting up and managing the payment plans out of court.

RECORDS	This Month	This Month Last Year	YTD	Last YTD	Change By Month	Change YTD
Incident/Arrest Reports Processed	1198	1157	11238	11179	4%	1%
Accident Reports Processed	217	236	1865	1874	-8%	0%
Citations Processed	2932	3390	30101	36769	-14%	-18%
Warnings Processed	783	804	7844	7716	-3%	2%
Backgrounds	20	37	155	181	-46%	-14%
Fingerprints	0	180	639	1106	-100%	-42%
Photos	0	0	4	8	N/C	-50%
Accident Requests	120	105	963	1059	14%	-9%
Accident Requests Online	142	130	1,168	1,016	9%	15%

## PROFESSIONAL STANDARDS

The Office of Professional Standards, a unit within Administration, is charged with the compilation and updating of an extensive set of policies and procedures and providing a general operations guideline and code of conduct for officers to follow. In the event

that a member of the public does experience a negative interaction with an officer, mechanisms are in place for them to lodge a complaint. All complaints are reviewed and investigations completed in a timely manner.

# MONTHLY REPORT SEPTEMBER 2013

8 October 2013

Professional Standards	This Month	This Month Last Year	YTD	Last YTD	Change By Month	Change YTD
Opened (TOTAL)	4	5	30	54	-20%	-44%
Closed	4	5	29	52	-20%	-44%
Inquiries	3	5	23	42	-40%	-45%
Formal Investigations	1	0	8	7	N/C	14%
Sustained	2	3	15	40	-33%	-63%
Not-Sustained	1	0	6	1	N/C	500%
Exonerated	1	1	5	4	0%	25%
Unfounded	0	1	6	9	-100%	-33%

END OF REPORT



## Contact Information

Basia Combs, MPA, CCIA | Crime Analyst | Office of Crime Analysis & Criminal Intelligence  
Jonesboro Police Department | 410 W Washington Ave | Jonesboro, AR 72401  
Ph: 870-336-7196 | E-mail: [bcombs@jonesboro.org](mailto:bcombs@jonesboro.org) | [www.jonesboropolice.com](http://www.jonesboropolice.com)