

JONESBORO POLICE DEPARTMENT

Monthly Report

MARCH 2015

IN THIS REPORT

CRIME ANALYSIS	1
Total Crime	2
Crimes against Person	3
Property Crimes	4
Crimes of Proactive Policing	5
Other Crimes.....	5
Arrests Demographics	6
EMERGENCY 911	7
UPD	8
PROWL	9
CID	9
WARRANTS	10
DRUG TASK FORCE	11
TRAFFIC	12
ANIMAL CONTROL	13
FLEET MAINTENANCE	14
RECORDS	15
PROFESSIONAL STANDARDS	15

The purpose of the Jonesboro Police Department Monthly Report is to compile data into one integrated report for review, allowing for a seamless flow of information for better decision-making. After each department collates their monthly numbers and sends it to the Office of Crime Analysis, it is organized into sections of departmental data, analyzed and packaged, and finally disseminated to department heads, the Chief of Police, the City Mayor, and the City Council. Major sections include Crime Analysis, Emergency 911, Uniform Police Division, Prowl, Criminal Investigative Division, Warrants, Drug Task Force, Traffic, Animal Control, Fleet Maintenance, Records, and Professional Standards.

CRIME ANALYSIS

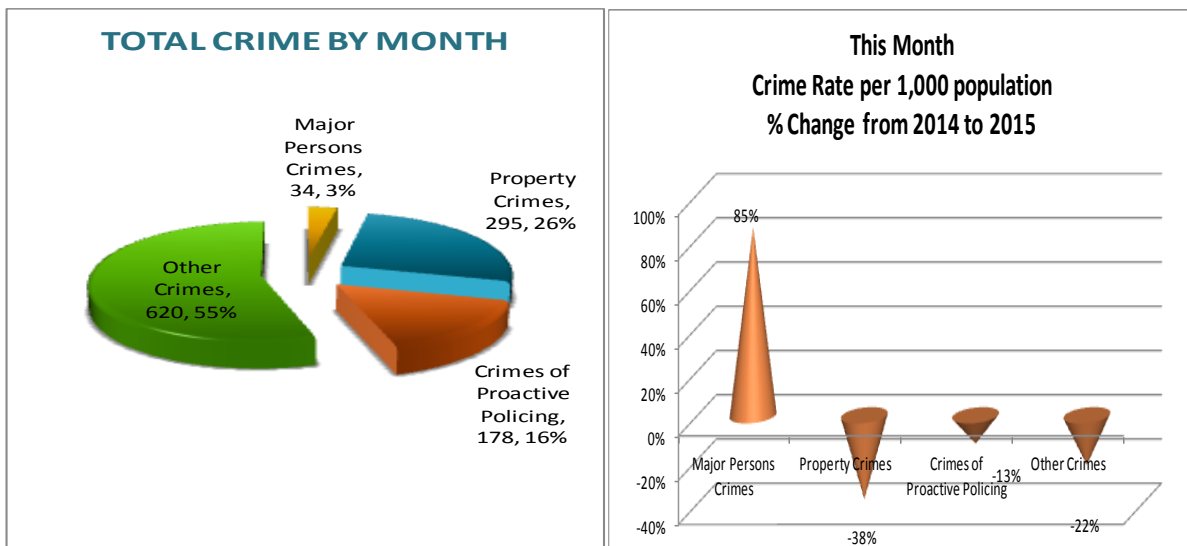
The Crime Analysis Unit consists of one Crime Analyst and one part-time Crime Analyst Assistant. The Crime Analyst position is responsible for the analysis and dissemination of crime activity data and the collection and maintenance of crime intelligence information for the city of Jonesboro. Additionally, the Office is charged with providing the department with current and accurate crime maps presenting crime activity data to audiences of interest and with responding to requests for crime data from civilians and departmental staff. Data exported from this division is used by field agents for more effective, efficient policing, by administration for improved staffing decisions, and by the Mayor's office for community decision making and enhanced public relations. The following section is broken down into Total Crime, Crimes against Persons, Property Crimes, Crimes of Proactive Policing, Other Crimes, Arrest Demographics, and Total Crime Monthly Comparison.

MONTHLY REPORT MARCH 2015

April 28, 2015

TOTAL CRIME

The crime activity for the month of March 2015 was at a total of 1,127 NIBRS reportable offenses, a -23% decrease, compared to the total of offenses reported in March of the last year. With Jonesboro population estimated to be equal to 72,958, the crime rate in March of this year was at 15 crimes per 1,000 population, compared to 20 crimes per 1,000 population last year¹, a - 25% decrease. As indicated on the pie chart below, Other Crimes absorb the majority, 55%, of this month's crime activity ($n = 620$). Property Crimes fall into a second place and comprise of 26% of all the crimes ($n = 295$). Following in third and fourth places are, respectively, Crimes of Proactive Policing, comprising of 16% ($n = 178$) of all the crimes, and Crimes against Persons, comprising of 3% ($n = 34$) of all the crimes this month.

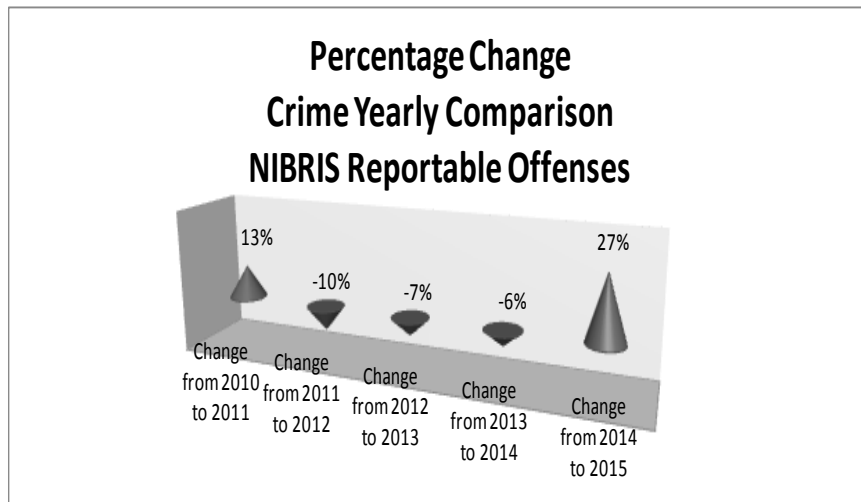
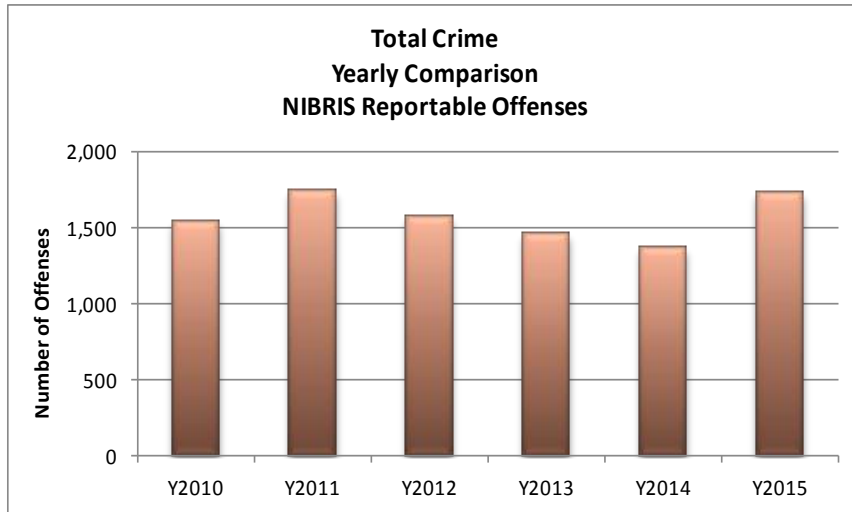


¹ Note: Population numbers are based on 2012 & 2013 population estimate, where 2012 population estimate is 70,187.

April 28, 2015

The charts below depict frequencies of crime by year, percentage change

from year to year, and year to date yearly comparison.



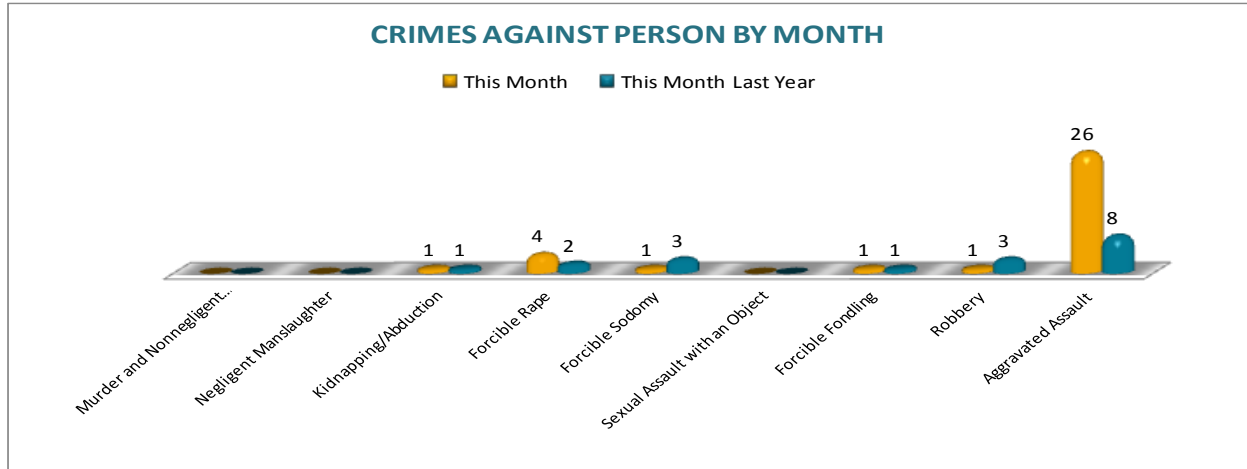
CRIMES AGAINST PERSONS

There are 9 crimes that make up this section. There were a total of 34 offenses in this area in March this year. There were 2 more Forcible rapes reported this year in March, comparing to the last year. As demonstrated on

the column chart below, the most significant change was in aggravated assault cases reported at 8 this month last year while this year there were a total of 26 incidents.

MONTHLY REPORT MARCH 2015

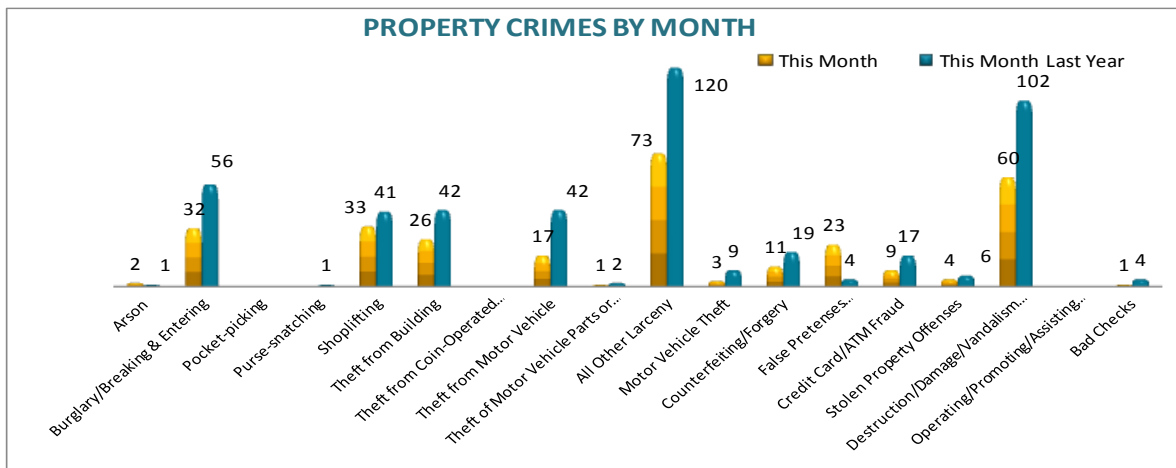
April 28, 2015



PROPERTY CRIMES

This section displays the criminal activity for 18 crimes, all against property. This month, there were a total of 295 Property Crimes, a -37% decrease, comparing to March of the last year. The data indicates change in Burglary/Breaking & Entering, down 43% (n= 32) compared to the 56 that took place this month last year, and in

Destruction/Damage/Vandalism of Property, down 41%. All Other Larceny has decreased 39%, dropping from 120 last year to 73 incidents this month. Theft from Motor Vehicle has also significantly decreased, down -60% this year. No other significant changes are noted for the remainder of the offenses in this category of crimes.

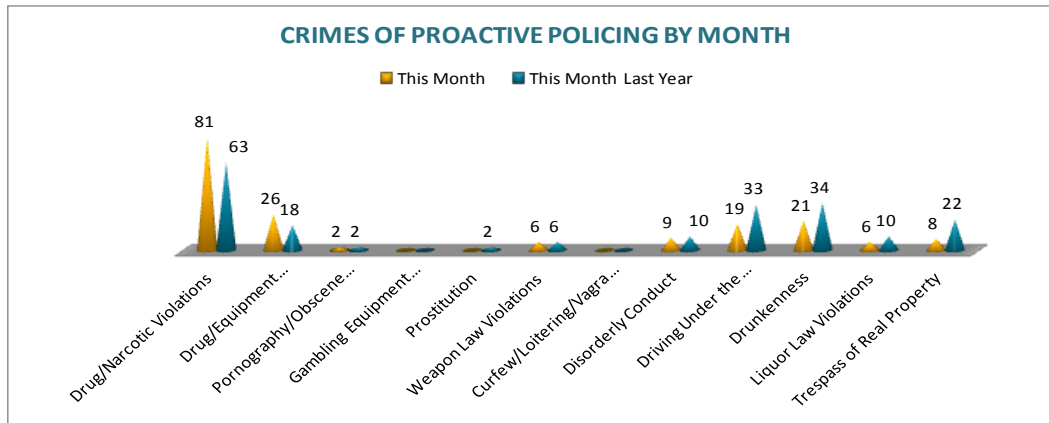


April 28, 2015

CRIMES OF PROACTIVE POLICING

Crimes of Proactive Policing are those crimes that result from police officers actively policing the streets to combat certain types of street crime. As chart below indicates, twelve crimes fall under this category. A total of 178 offenses have been reported this

month, down -11%, comparing to March of the last year. Drug/Narcotic Violations have increased by 29%. Trespass of Real Property has decreased by 64%. Driving under the Influence violations have decreased by -42%. There are no other major changes noted for the offenses in this category.

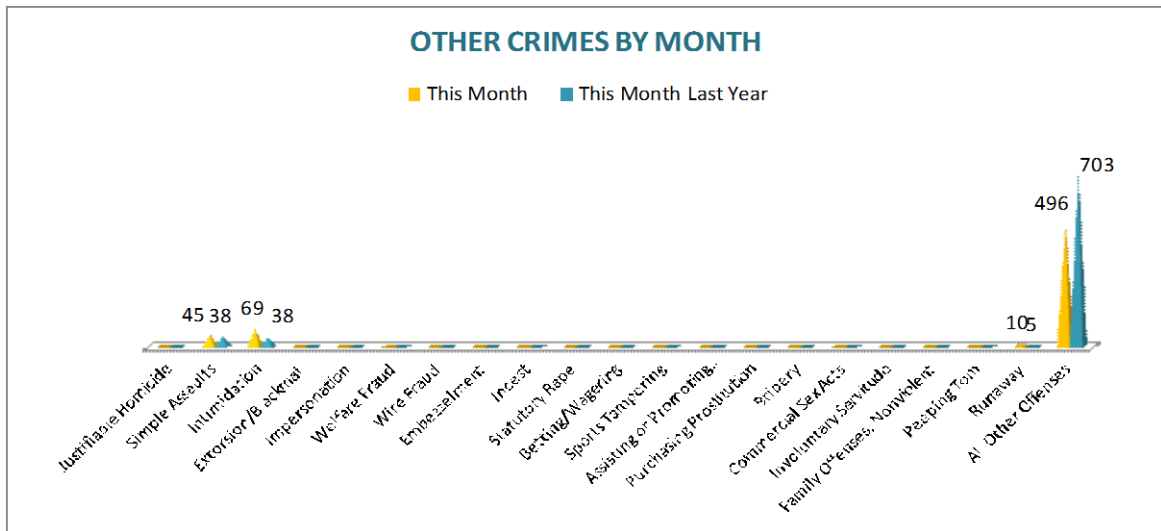


OTHER CRIMES

There are 21 crimes that fall into the Other Crimes category. This month, there have been a total of 620 Other Crimes reported, an -21% decrease, comparing to March of the last year. All Other Offenses have decreased by -

29%. Simple Assaults increased slightly by 18%. Runaways (n= 10), have increased by 5 incidents since this month last year. No other major changes are noted in this category of crimes this month.

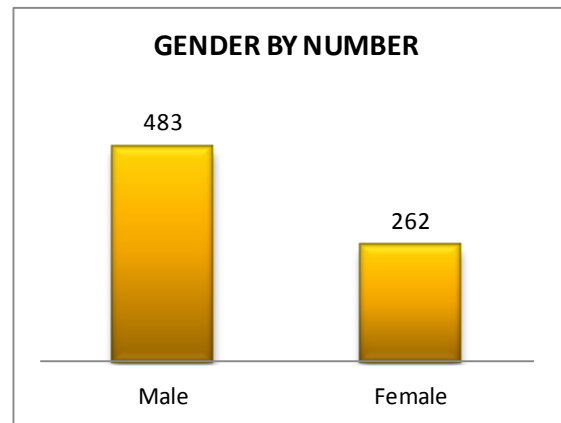
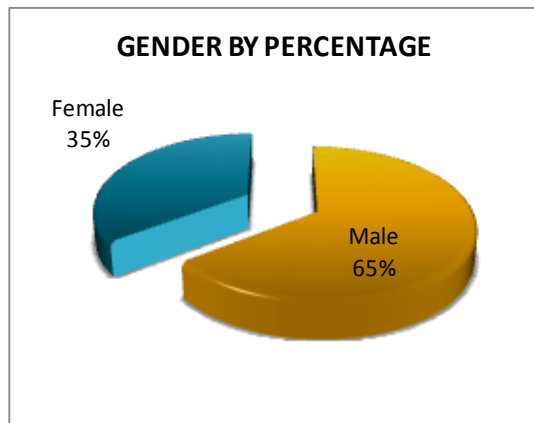
April 28, 2015



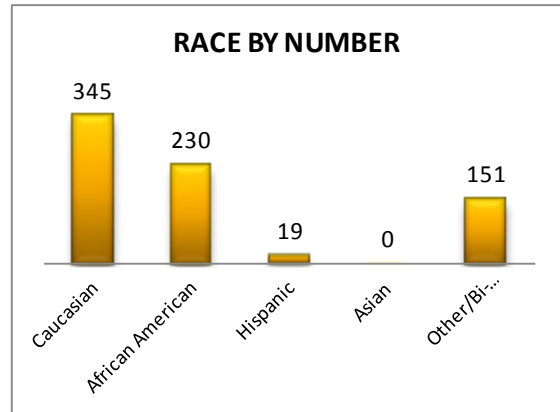
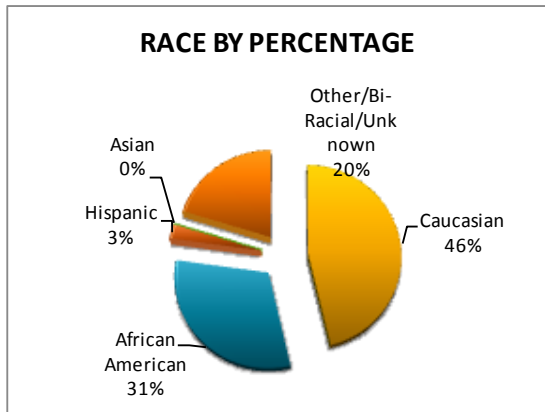
ARREST DEMOGRAPHICS

In March 2015, there were a total of 745 arrests carried out by the Jonesboro Police Department, down -8%, comparing with the last year's data for the month of March. This section breaks down this month's arrests by race and gender. The majority of arrestees, 65%, have been male ($n= 483$), as opposed

to 35% of female arrestees ($n= 262$). As for the racial/ethnic composition, the majority of arrestees have been Caucasian (46%) and African American (31%), comparing to Hispanic (3%), Asian (0%), or other/unknown/bi-racial (20%).

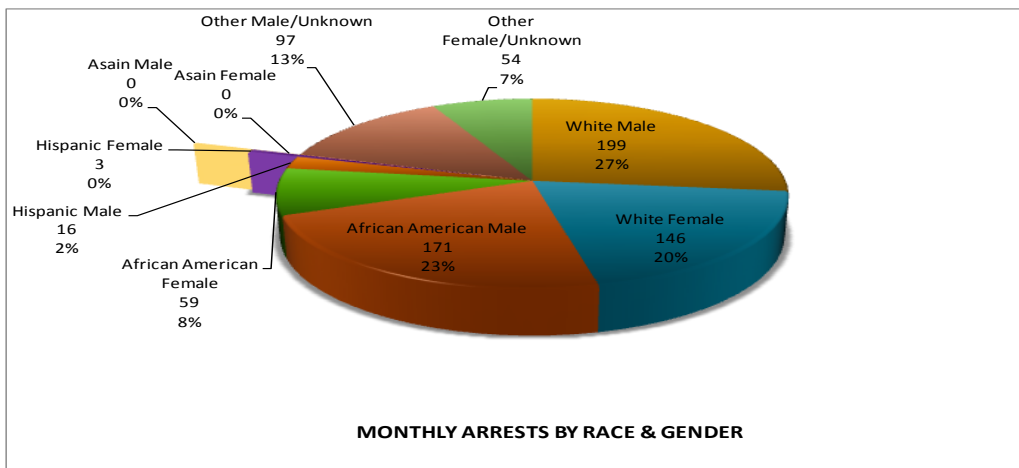


April 28, 2015



Caucasian males make up the majority, at 27% of arrestees this month, followed by, African American males 23%. Caucasian females make up 20%, while African American females make up 8% of all the arrestees this month. Hispanic males make up 2%, male of

Other/Unknown race represent 13% of arrestees, and female of Other/Unknown race make up for 7%, while Hispanic females, and Asian Males/Females make up 1% or less of all the arrestees this month.



EMERGENCY 911

Also known as Public Safety Answering Point (PSAP), the Emergency 911 Division is responsible for answering all calls from public for emergency assistance, accessing the needed information to best assist, and then assigning the most efficient and effective emergency

response. In addition, this division is responsible for setting priority call dispatching to field units including Police, Fire, and EMS. Emergency 911 also maintains all records for radio logs, calls for service, and other emergency service data collections.

MONTHLY REPORT MARCH 2015

April 28, 2015

Calls by Type	This Month	This Month Last Year	YTD	Last YTD	Change By Month	Change YTD
Land Line E911	826	901	2,453	2,552	-8%	-4%
Cell Phone E911	5,441	4,170	15,489	12,499	30%	24%
Admin Lines-non emer	15,583	13,249	43,332	39,828	18%	9%
TOTALS	21,850	18,320	61,274	54,879	19%	12%
Calls by Agency	This Month	This Month Last Year	YTD	Last YTD	Change By Month	Change YTD
Jonesboro PD Calls	6,213	7,719	18,627	21,326	-20%	-13%
Craighead Cty Sheriff	1,124	1,095	3,028	3,222	3%	-6%
Jonesboro Fire Dpt - dispatch	230	181	678	611	27%	11%
Jonesboro Fire Dpt - Med Asst	164	155	483	452	6%	7%
Craighead Cty - Fire	39	64	155	246	-39%	-37%
Craighead Cty - 1st Responder	118	123	342	331	-4%	3%
Emerson Ambulance	327	307	960	903	7%	6%
Medic One	373	337	1,097	967	11%	13%
Air Evac	0	0	0	0	#DIV/0!	#DIV/0!
Coroner	3	6	9	14	-50%	-36%
ARK State Police	14	7	23	25	100%	-8%
Jonesboro Animal Control	1	3	5	8	-67%	-38%
Wreckers Called	279	253	684	721	10%	-5%
TOTALS	8,885	10,250	26,091	28,826	-13%	-9%
Calls by Municipality	This Month	This Month Last Year	YTD	Last YTD	Change By Month	Change YTD
Bay PD	69	134	260	368	-49%	-29%
Bono PD	257	315	630	920	-18%	-32%
Brookland PD	274	289	796	587	-5%	36%
Caraway PD	65	49	155	128	33%	21%
Cash PD	100	191	322	505	-48%	-36%
Egypt PD	12	0	37	13	N/C	185%
Lake City PD	134	118	330	304	14%	9%
Monette PD	93	109	287	377	-15%	-24%
TOTALS	1,004	1,205	2,817	3,202	-17%	-12%

UNIFORM PATROL DIVISION

The UPD is responsible for responding to calls into the Emergency – 911 Division by civilians and are normally the first responders. Jonesboro is divided into 6 patrol districts. Officers from UPD are assigned to a district and work the same

district every shift. In addition, when a Traffic Officer is not available, a UPD Officer will respond to traffic accidents and assist in directing traffic when necessary.

MONTHLY REPORT MARCH 2015

April 28, 2015

Incidents	This Month	This Month Last Year	YTD	Last YTD	Change By Month	Change YTD
Calls for Service	4,017	7,719	11,227	21,325	-48%	-47%
Complaints	3,964	5,036	10,606	14,093	-21%	-25%
Assists	1,520	716	4,532	1,989	112%	128%
Incident Reports	848	837	1,854	2,213	1%	-16%
Street Accidents	119	62	322	245	92%	31%
Private Property Accidents	47	46	132	106	2%	25%
Traffic Stops	1,873	2,683	6,261	7,232	-30%	-13%
Traffic Citations	331	484	1,127	1,308	-32%	-14%
Written Warnings	873	1,490	2,889	3,122	-41%	-7%
DWI	7	28	36	75	-75%	-52%
Mis. Arrests	361	399	1,128	1,172	-10%	-4%
Felony Arrests	83	87	253	277	-5%	-9%
Warrants Served	585	839	1,897	2,855	-30%	-34%
Alarms	363	427	1,121	1,247	-15%	-10%
Hours Worked	8,034	8,328	21,338	23,118	-4%	-8%

PROWL

The Prowl unit is a uniformed street crimes unit specializing in criminal patrol, narcotics enforcement, gang investigation, and prostitution activity. The unit conducts directed patrols,

investigates citizen complaints of street-level criminal activity, and directly assists the 2nd Judicial Drug Task Force. PROWL also assists any division within the Jonesboro Police Department at any time when needed.

Incidents	This Month	This Month Last Year	YTD	Last YTD	Change By Month	Change YTD
Street Accidents	0	0	0	0	N/C	N/C
Private Property Accidents	0	0	0	0	N/C	N/C
Traffic Citations	13	9	32	28	44%	14%
DWI	0	0	1	0	N/C	N/C
Mis. Arrests	83	141	241	326	-41%	-26%
Felony Arrests	27	29	63	78	-7%	-19%
Drug Arrests	17	25	40	61	-32%	-34%
Public Intoxication Arrests	0	0	0	0	N/C	N/C
Calls For Service	66	65	179	142	2%	26%
Alarms	0	0	0	0	N/C	N/C
Parking Citations	0	0	0	0	N/C	N/C
Written Warnings	30	44	111	109	-32%	2%
Assists	0	0	0	0	N/C	N/C
TOTALS	0	0	0	0	N/C	N/C
Value of Drugs Seized	\$ 6,340.00	\$ 7,825.00	\$ 64,672.00	\$ 8,725.00	-19%	641%
Value of Asstes Seized	\$ 220.00	\$ 2,337.00	\$ 2,281.00	\$ 2,337.00	-91%	-2%
Patrol Miles	0	0	0	0	N/C	N/C

CRIMINAL INVESTIGATIVE DIVISION

The CID is responsible for conducting follow-up investigations into criminal

acts reported to the Jonesboro Police Department.

The primary goal is to collect and present evidence that conclusively leads to a successful arrest. Additionally,

MONTHLY REPORT MARCH 2015

April 28, 2015

CID is charged with clearing additional crimes, recovering stolen property, preventing additional crimes, and gathering intelligence information.

Investigations	This Month	This Month Last Year	YTD	Last YTD	Change By Month	Change YTD
Criminal Investigations Assigned	131	107	141	107	22%	32%
Criminal Investigations Closed	173	74	94	74	134%	27%
Cleared by Arrests	64	37	53	37	73%	43%
Unfounded	10	12	16	12	-17%	33%
Exceptionally Cleared	16	15	16	15	7%	7%
Filed With Prosecutors Office	3	9	1	9	-67%	-89%
Crimes Against Persons	This Month	This Month Last Year	YTD	Last YTD	Change By Month	Change YTD
Criminal Investigations Assigned	38	32	23	32	19%	-28%
Criminal Investigations Closed	31	26	28	26	19%	8%
Cleared by Arrests	22	16	21	16	38%	31%
Unfounded	4	4	4	4	0%	0%
Exceptionally Cleared	5	3	2	3	67%	-33%
Filed With Prosecutors Office	0	3	1	3	-100%	-67%
Property Crimes	This Month	This Month Last Year	YTD	Last YTD	Change By Month	Change YTD
Criminal Investigations Assigned	73	67	102	67	9%	52%
Criminal Investigations Closed	55	45	54	45	22%	20%
Cleared by Arrests	42	19	30	19	121%	58%
Unfounded	3	8	11	8	-63%	38%
Exceptionally Cleared	9	12	13	12	-25%	8%
Filed With Prosecutors Office	1	6	0	6	-83%	-100%
Crimes Against Children	This Month	This Month Last Year	YTD	Last YTD	Change By Month	Change YTD
Criminal Investigations Assigned	6	5	4	5	20%	-20%
Criminal Investigations Closed	7	2	4	2	250%	100%
Cleared by Arrests	0	2	2	2	-100%	0%
Unfounded	3	0	1	0	N/C	N/C
Exceptionally Cleared	2	0	1	0	N/C	N/C
Filed With Prosecutors Office	2	0	0	0	N/C	N/C
	This Month	This Month Last Year	YTD	Last YTD	Change By Month	Change YTD
Miscellaneous Investigations Assigned	14	3	12	3	367%	300%
Miscellaneous Investigations Cleared	3	1	8	1	200%	700%
ICAC ACTIVITY	This Month	This Month Last Year	YTD	Last YTD	Change By Month	Change YTD
Forensic Exams	23	0	0	0	0	0
Computers	5	0	0	0	0	0
Phones	18	0	0	0	0	0
Other Devices	2	0	0	0	0	0
Cyber Tips Received	4	0	0	0	0	0
FINGERPRINTS	This Month	This Month Last Year	YTD	Last YTD	Change By Month	Change YTD
Rolled for the Public	142	153	400	424	-0.07	-0.06

WARRANTS

The Warrants Division is responsible for serving warrants, criminal summonses, and subpoenas that are issued by the District Court. On city court days, the Warrants Division provides a bailiff for court and a transport officer. In addition, this Division is responsible for

transporting wanted persons arrested in other jurisdictions back to Jonesboro. The STEP program operates within this division and is a grant-funded operation in which officers can get paid overtime to enforce the safety belt law.

MONTHLY REPORT MARCH 2015

April 28, 2015

Arrests	This Month	This Month Last Year	YTD	Last YTD	Change By Month	Change YTD
Misdemeanor	0	974	#REF!	1753	-100%	#REF!
Felony	0	0	#REF!	0	N/C	N/C
Total Arrests	0	974	#REF!	1753	-100%	#REF!
Warrants by Activity	This Month	This Month Last Year	YTD	Last YTD	Change By Month	Change YTD
Subpoenas	485	663	#REF!	1458	-27%	#REF!
Commitments	15	2	#REF!	5	650%	#REF!
Traffic Citations	1139	0	#REF!	0	N/C	N/C
Complaints	1	1	#REF!	2	0%	#REF!
Assist	6	2	#REF!	2	200%	#REF!
Alarms	0	0	#REF!	0	N/C	N/C
Hours by Activity	This Month	This Month Last Year	YTD	Last YTD	Change By Month	Change YTD
SI Criminal	109.5	184.5	#REF!	456.33	-41%	#REF!
Court	94	106.67	#REF!	241.84	-12%	#REF!
Prisoner Transport	52	20.67	#REF!	66.67	152%	#REF!
Hours Worked	This Month	This Month Last Year	YTD	Last YTD	Change By Month	Change YTD
Regular Hours Worked	579.5	538	#REF!	1246	8%	#REF!
Overtime Hours Worked	6	1.5	#REF!	8.5	300%	#REF!
TOTAL Hours Worked	585.5	539.5	#REF!	1254.5	9%	#REF!
Mileage	This Month	This Month Last Year	YTD	Last YTD	Change By Month	Change YTD
Total Mileage	3464	2712	#REF!	6444	28%	#REF!
STEP	This Month	This Month Last Year	YTD	Last YTD	Change By Month	Change YTD
DWI Arrest	0	0	#REF!	0	N/C	N/C
DUI Arrest	0	0	#REF!	0	N/C	N/C
Traffic Citations	0	46	#REF!	95	-100%	#REF!
Felony Arrests	0	1	#REF!	1	-100%	#REF!
Drug Arrests	0	0	#REF!	0	N/C	N/C
	0	0	0	0		
STEP TOTALS	0	47	#REF!	96	-100%	#REF!
STEP Hours Worked	0	63	#REF!	119	-100%	#REF!
STEP Miles Driven	0	429	#REF!	722	-100%	#REF!

DRUG TASK FORCE

The DTF is responsible for investigating major drug traffickers in the area, including all types of illegal drugs.

The DTF works closely with local, state, and federal agencies to eradicate drugs from the community.

INVESTIGATIONS	This Month	This Month Last Year	YTD	Last YTD	Change By Month	Change YTD
Opened	36	26	95	63	38%	51%
Closed	29	22	73	56	32%	30%
TOTAL	38	26	95	63	46%	51%
With Nexus to Jonesboro	This Month	This Month Last Year	YTD	Last YTD	Change By Month	Change YTD
Opened	37	19	109	51	95%	114%
Closed	0	0	0	0	N/C	N/C
TOTAL	37	19	109	51	95%	114%

MONTHLY REPORT MARCH 2015

April 28, 2015

Outside Jonesboro (No Known Nexus)	This Month	This Month Last Year	YTD	Last YTD	Change By Month	Change YTD
Opened	3	0	0	0	N/C	N/C
Closed	0	0	0	0	N/C	N/C
TOTAL	3	0	0	0	N/C	N/C
ASSISTANCE RENDERED	This Month	This Month Last Year	YTD	Last YTD	Change By Month	Change YTD
Assist to Outside Agencies	0	0	0	4	N/C	-100%
Assist to Jonesboro UPD/CID	12	9	17	17	33%	0%
ARRESTS	This Month	This Month Last Year	YTD	Last YTD	Change By Month	Change YTD
Miscellaneous	17	9	46	25	89%	84%
Felony	54	31	132	92	74%	43%
Marijuana	8	3	22	7	167%	214%
Cocaine	0	0	1	2	N/C	-50%
Crack Cocaine	3	2	6	8	50%	-25%
Methamphetamine/ICE	32	9	72	28	256%	157%
LSD	0	0	0	0	N/C	N/C
Extasy (MDMA or Other Designer Drug)	0	1	0	1	-100%	-100%
Prescription	6	3	11	9	100%	22%
Opiates (Heroin, Opium)	1	0	1	0	N/C	N/C
Labs	0	0	0	0	N/C	N/C
All Other Drug Offenses	15	11	36	20	36%	80%
ASSET FORFEITURE	This Month	This Month Last Year	YTD	Last YTD	Change By Month	Change YTD
Vehicles Seized (No.)	\$1.00	\$0.00	\$1.00	\$1.00	N/C	0%
Value of Assets Seized(Includes Value of vehicles)	\$19,563.00	\$0.00	\$23,610.00	\$5,894.00	N/C	301%
Asset Value Awarded to Jonesboro PD (State)	0	0	0	0	N/C	N/C
Asset Value Awarded to Jonesboro PD (Federal)	0	0	0	0	N/C	N/C
Asset Value Awarded to Jonesboro PD (Total)	0	0	0	0	N/C	N/C
ARRESTS DEMOGRAPHICS	This Month	This Month Last Year	YTD	Last YTD	Change By Month	Change YTD
White	19	16	56	43	19%	30%
African American	11	2	35	13	450%	169%
Latino	0	0	0	2	N/C	-100%
Asian	0	0	0	0	N/C	N/C
Other/Bi-Racial	0	0	0	0	N/C	N/C
Male	31	13	73	45	138%	62%
Female	10	2	30	12	400%	150%
White Male	19	11	38	31	73%	23%
White Female	10	2	27	9	400%	200%
African American Male	12	2	32	11	500%	191%
African American Female	0	0	3	3	N/C	0%
Latino Male	0	0	0	2	N/C	-100%
Latino Female	0	0	0	0	N/C	N/C
Asian Male	0	0	0	0	N/C	N/C
Asian Female	0	0	0	0	N/C	N/C
Other/Bi-Racial Male	0	0	0	0	N/C	N/C
Other/Bi-Racial Female	0	0	0	0	N/C	N/C

TRAFFIC

The Traffic Enforcement Unit responds to traffic accidents and provides increased enforcement in particularly challenging areas. This unit also provides extra coverage for specific congestion

problems and special events in the community. Last, they work details targeting specific issues, such as DWI enforcement and traffic safety checkpoints.

MONTHLY REPORT MARCH 2015

April 28, 2015

Incidents	This Month	This Month Last Year	YTD	Last YTD	Change By Month	Change YTD
Street Accidents	116	130	393	402	-11%	-2%
Private Property Accidents	38	46	117	127	-17%	-8%
Traffic Citations	97	150	355	337	-35%	5%
DWI	1	3	3	9	-67%	-67%
Mis. Arrests	5	10	38	40	-50%	-5%
Felony Arrests	0	0	0	3	N/C	-100%
Drug Arrests	0	0	0	0	N/C	N/C
Public Intoxication Arrests	0	0	0	0	N/C	N/C
Calls For Service	103	165	311	508	-38%	-39%
Alarms	0	0	0	0	N/C	N/C
Parking Citations	0	0	0	0	N/C	N/C
Written Warnings	89	161	364	817	-45%	-55%
TOTALS	449	665	1581	2243	-32%	-30%
Value of Asstes Seized	\$ -	\$ -	\$ -	\$ -	N/C	N/C
Patrol Miles	4,806	6,370	14,945	15,340	-25%	-3%
Hours Worked	848.5	911	2725.5	2929	-7%	-7%

ANIMAL CONTROL

The Animal Control Division is responsible for educating the public on safe and humane issues regarding animal treatment, enforcing all animal laws and ordinances, assisting the public in resolving animal issues, and protecting

the safety and welfare of the citizens and animals in this community.

Incident/Service	This Month	This Month Last Year	YTD	Last YTD	Change By Month	Change YTD
Barking Complaints	7	9	20	16	-22%	25%
Bite Reports	12	5	18	12	140%	50%
Door Hangers	62	61	162	181	2%	-10%
Welfare Checks	70	43	181	142	63%	27%
Advised of Rights	1012	1064	2678	2908	-5%	-8%
Incident Reports	8	4	11	10	100%	10%
Gone on Arrival	75	46	177	143	63%	24%
Complaints	710	1041	1831	2575	-32%	-29%
Desk Complaints	1567	1555	4015	4110	1%	-2%
Captured Dogs	140	153	327	420	-8%	-22%
Captured Cats	5	31	21	44	-84%	-52%
Captured Wildlife	25	7	43	26	257%	65%
Chemical Captures	1	0	3	2	N/C	50%
Traps	39	19	85	47	105%	81%
Deceased Animals	151	68	293	167	122%	75%
Assist J.P.D.	18	4	27	13	350%	108%
Assist C.S.O.	0	3	7	16	-100%	-56%
Public Relations	365	562	908	1202	-35%	-24%

MONTHLY REPORT MARCH 2015

April 28, 2015

Incident/Service	This Month	This Month Last Year	YTD	Last YTD	Change By Month	Change YTD
CITATIONS ISSUED	93	72	161	168	29%	4%
WARNINGS ISSUED	150	159	335	354	-6%	-5%
Physical Arrests	8	11	13	31	-27%	-58%
City Warrants Served	16	11	21	33	45%	-36%
County Warrants Served	0	0	0	2	N/C	-100%
Felony Bench Warrants	0	0	0	0	N/C	N/C
Euthanized	65	60	144	195	8%	-26%
Deceased Animals Landfill lbs.	2760	2220	6720	6680	24%	1%
Wildlife Euthanized	25	7	43	26	257%	65%
Sent to Rescue Centers	3	9	23	32	-67%	-28%
Adoptions	40	38	86	141	5%	-39%
Miles Driven	10658	7486	27241	22941	42%	19%

FLEET MAINTNANCE

The Fleet Maintenance is responsible for all of the police vehicle maintenance upkeep, cleanliness, and purchasing. In

addition, this Division handles most of the purchasing of equipment, supplies, and uniforms for all of the Police Department.

Repair Costs by Model Year	This Month	This Month Last Year	YTD	Last YTD	Change By Month	Change YTD
95-99	\$0.00	\$0.00	\$0.00	\$0.00	N/C	N/C
2000	\$0.00	\$2,068.09	\$0.00	\$2,068.09	-100%	-100%
2001	\$0.00	\$0.00	\$0.00	\$0.00	N/C	N/C
2002	\$0.00	\$0.00	\$0.00	\$0.00	N/C	N/C
2003	\$168.26	\$0.00	\$168.26	\$0.00	N/C	N/C
2004	\$0.00	\$0.00	\$475.51	\$0.00	N/C	N/C
2005	\$176.58	\$0.00	\$176.58	\$0.00	N/C	N/C
2006	\$1,073.46	\$3,528.57	\$4,500.79	\$5,652.07	-70%	-20%
2007	\$1,517.66	\$774.23	\$5,927.11	\$3,460.69	96%	71%
2008	\$466.24	\$1,228.54	\$931.61	\$7,126.52	-62%	-87%
2009	\$1,732.42	\$631.67	\$3,763.35	\$1,853.47	174%	103%
2010	\$0.00	\$0.00	\$347.45	\$0.00	N/C	N/C
2011	\$1,144.27	\$11.66	\$2,189.57	\$346.27	9714%	532%
2012	\$11.61	\$0.00	\$11.61	\$0.00	N/C	N/C
2013	\$0.00	\$0.00	\$1,000.00	\$0.00	N/C	N/C
2014	\$175.95	\$256.29	\$700.56	\$256.29	-31%	173%
2015	\$0.00	\$0.00	\$0.00	\$0.00	N/C	N/C
Totals	\$ 6,466.45	\$ 8,499.05	\$ 20,192.40	\$ 20,763.40	-24%	-3%
Routine Preventative Maintenance by Model Year	This Month	This Month Last Year	YTD	Last YTD	Change By Month	Change YTD
95-99	\$ -	\$ -	\$ -	\$ -	N/C	N/C
2000	\$ -	\$ -	\$ 12.00	\$ -	N/C	N/C
2001	\$ -	\$ -	\$ -	\$ -	N/C	N/C
2002	\$ -	\$ -	\$ -	\$ -	N/C	N/C
2003	\$ 29.00	\$ -	\$ 49.00	\$ 40.00	N/C	23%
2004	\$ 49.00	\$ 20.00	\$ 517.01	\$ 20.00	145%	2485%
2005	\$ 100.00	\$ 24.50	\$ 120.00	\$ 24.50	308%	390%
2006	\$ 994.03	\$ 238.00	\$ 1,571.03	\$ 1,681.55	318%	-7%
2007	\$ 222.50	\$ 258.00	\$ 1,209.18	\$ 1,439.40	-14%	-16%
2008	\$ 16.30	\$ 696.77	\$ 247.19	\$ 783.27	-98%	-68%
2009	\$ 104.50	\$ 525.95	\$ 1,243.07	\$ 1,056.71	-80%	18%
2010	\$ 20.00	\$ 20.00	\$ 1,115.98	\$ 20.00	0%	5480%
2011	\$ 443.35	\$ 1,413.90	\$ 3,025.55	\$ 2,799.18	-69%	8%
2012	\$ 403.61	\$ -	\$ 412.61	\$ 60.00	N/C	588%
2013	\$ 20.00	\$ -	\$ 69.00	\$ 40.00	N/C	73%
2014	\$ 603.00	\$ 20.00	\$ 1,631.55	\$ 1,613.55	2915%	1%

MONTHLY REPORT MARCH 2015

April 28, 2015

RECORDS

The Records Division is responsible for providing administrative and clerical support to the department. Major responsibilities include entering the accident and incident reports and tickets into the records database management system, assisting the

general public for report requests, performing criminal backgrounds, serving as a switchboard at times, performing validations, and setting up and managing the payment plans out of court.

RECORDS	This Month	This Month Last Year	YTD	Last YTD	Change By Month	Change YTD
Incident/Arrest Reports Processed	1232	1148	3463	3536	7%	-2%
Accident Reports Processed	225	292	718	704	-23%	2%
Citations Processed	2688	2899	8523	10448	-7%	-18%
Warnings Processed	864	1419	2829	3202	-39%	-12%
Backgrounds	15	10	32	29	50%	10%
Fingerprints	114	0	303	0	N/C	N/C
Photos	0	0	0	1	N/C	-100%
Accident Requests	81	82	217	229	-1%	-5%
Accident Requests Online	150	114	506	384	32%	32%

PROFESSIONAL STANDARDS

The Office of Professional Standards, a unit within Administration, is charged with the compilation and updating of an extensive set of policies and procedures and providing a general operations guideline and code of conduct for officers to follow. In the

event that a member of the public does experience a negative interaction with an officer, mechanisms are in place for them to lodge a complaint. All complaints are reviewed and investigations completed in a timely manner.

Professional Standards	This Month	This Month Last Year	YTD	Last YTD	Change By Month	Change YTD
Opened (TOTAL)	5	4	16	16	25%	0%
Closed	5	4	16	16	25%	0%
Inquiries	3	4	10	14	-25%	-29%
Formal Investigations	2	0	6	2	N/C	200%
Sustained	6	3	10	10	100%	0%
Not-Sustained	2	1	5	4	100%	25%
Exonerated	0	0	2	1	N/C	100%
Unfounded	1	1	3	2	0%	50%

END OF REPORT

April 28, 2015



Contact Information

Brandon Perry, Crime Analyst | BA Criminology, BA Sociology, CPLE, TCLE | Office of Crime Analysis and Criminal Intelligence Jonesboro
Police Department | 1001 S. Caraway | Jonesboro, AR

[|bperry@jonesboro.org](mailto:bperry@jonesboro.org) | Office: (870) 933-4614 ext. 2195 | www.jonesboropolice.com
