

JONESBORO POLICE DEPARTMENT

Monthly Report

APRIL 2014

IN THIS REPORT

CRIME ANALYSIS	1
Total Crime	2
Crimes against Person	4
Property Crimes	5
Crimes of Proactive Policing 6	
Other Crimes.....	7
Arrests Demographics	8
EMERGENCY 911	9
UPD	10
PROWL	10
CID	11
WARRANTS	11
DRUG TASK FORCE	12
TRAFFIC	13
Maps	14
ANIMAL CONTROL	15
FLEET MAINTENANCE 16	
RECORDS	17
PROFESSIONAL	
STANDARDS	17

The purpose of the Jonesboro Police Department Monthly Report is to compile data into one integrated report for review, allowing for a seamless flow of information for better decision-making. After each department collates their monthly numbers and sends it to the Office of Crime Analysis, it is organized into sections of departmental data, analyzed and packaged, and finally disseminated to department heads, the Chief of Police, the City Mayor, and the City Council. Major sections include Crime Analysis, Emergency 911, Uniform Police Division, Prowl, Criminal Investigative Division, Warrants, Drug Task Force, Traffic, Parking Enforcement, Animal Control, Fleet Maintenance, Records, and Professional Standards.

CRIME ANALYSIS

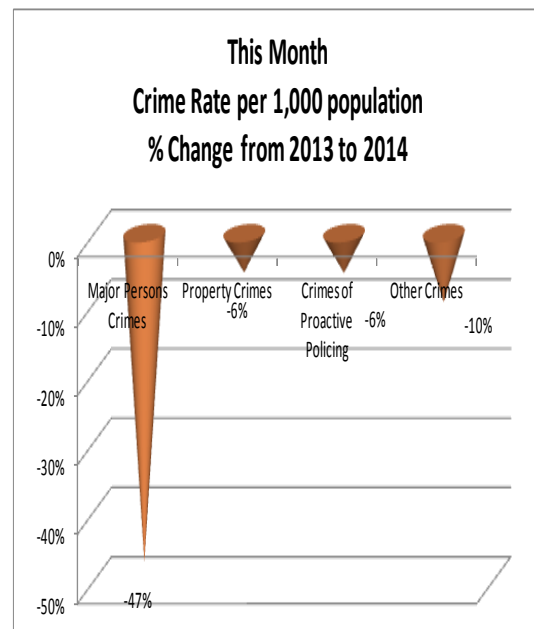
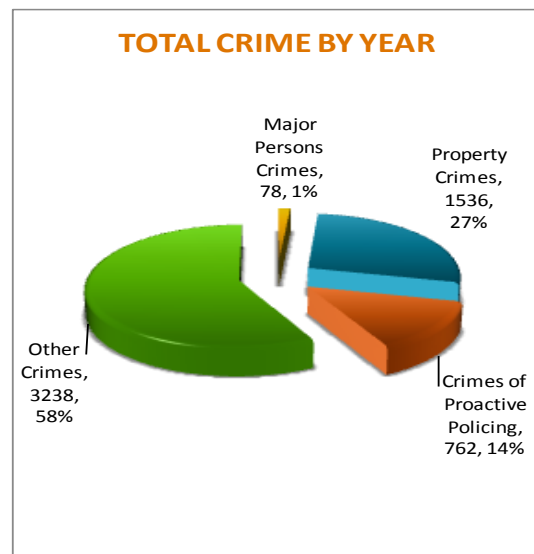
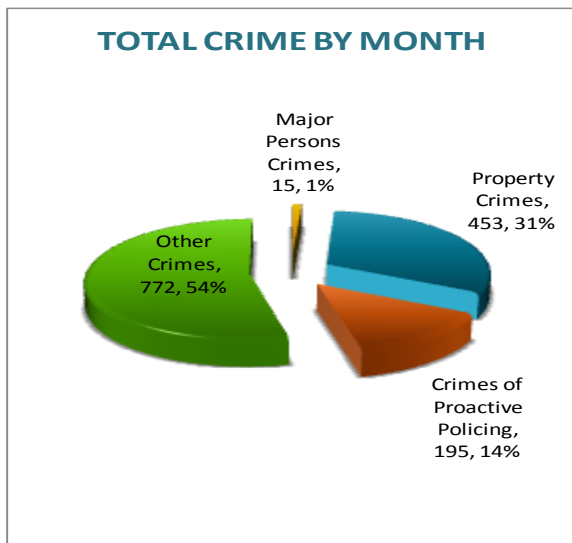
The Crime Analysis division consists of one Crime Analyst and one part-time Crime Analyst Assistant. The Crime Analyst position is responsible for the analysis and dissemination of crime activity data and the collection and maintenance of crime intelligence information for the city of Jonesboro. Additionally, the Office is charged with providing the department with current and accurate crime maps, presenting crime activity data to audiences of interest, and with responding to requests for crime data from civilians and departmental staff. Data exported from this division is used by field agents for more effective, efficient policing, by administration for improved staffing decisions, and by the Mayor's office for community decision making and enhanced public relations. The following section is broken down into Total Crime, Crimes against Persons, Property Crimes, Crimes of Proactive Policing, Other Crimes, Arrest Demographics, and Total Crime Monthly Comparison.

May 8, 2014

TOTAL CRIME

The crime activity for the month of April 2014 was at a total of 1,435 NIBRIS reportable offenses, a -7% decrease, comparing to the total of offenses reported in April of the last year. With Jonesboro population estimated to be equal to 71,527, the crime rate in April of this year was at 20 crimes per 1,000 population, comparing to 22 crimes per 1,000 population last year¹, a -9% decrease. As indicated on the pie chart below, Other Crimes absorb the majority, 54%, of this month's crime activity ($n = 772$). Property Crimes fall into a second place and comprise of 31% of all the crimes ($n = 453$). Following in third and fourth places are, respectively, Crimes of Proactive Policing, comprising of 14% ($n = 195$) of all the crimes, and Crimes against Persons, comprising of 1% ($n = 15$) of all the crimes this month.

per 1,000 population was 80, as compared to 82 crimes per 1,000 population last year, a -2% decrease. To date, a 58% of all the crimes is attributed to Other Crimes category ($n = 3,238$). Property Crimes amount to 27% of all the crimes ($n = 1,536$), Crimes of Proactive Policing comprise of 14% of all the crimes to date, where $n = 762$; Crimes against Persons comprise of 1% of a total year to date number of crimes ($n = 78$).



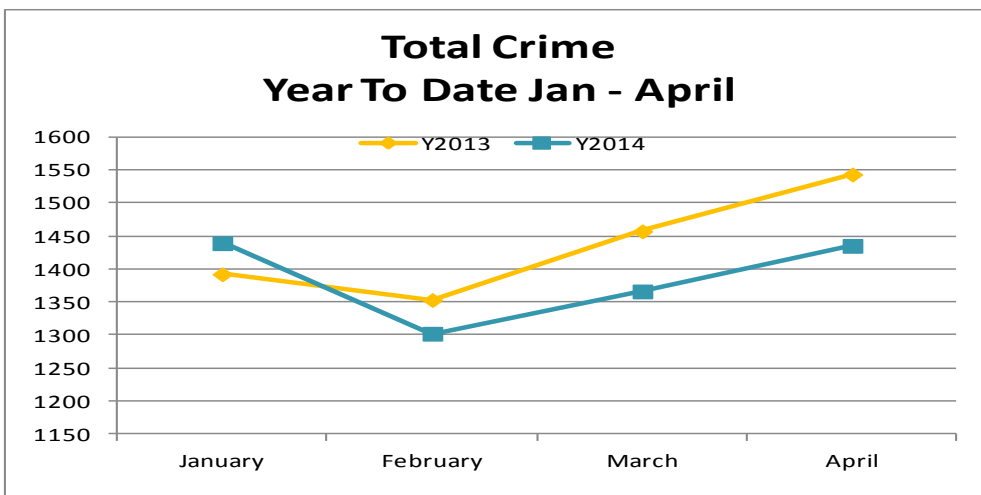
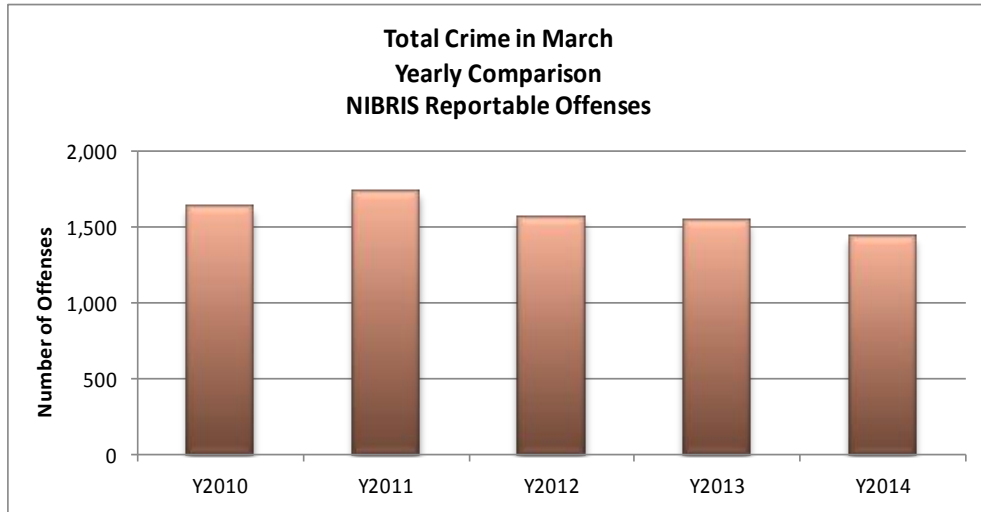
Year to date data includes number of crimes from January through April 2014. A total of 5,614 NIBRIS reportable offenses were reported in 2014, a -7% decrease, comparing to the same period of last year. The year to date crime rate

¹ Note: Population numbers are based on 2012 & 2013 population estimate, where 2012 population estimate is 70,187.

MONTHLY REPORT APRIL 2014

May 8, 2014

The charts below depict frequencies of crime by year, percentage change from year to year, and year to date yearly comparison.

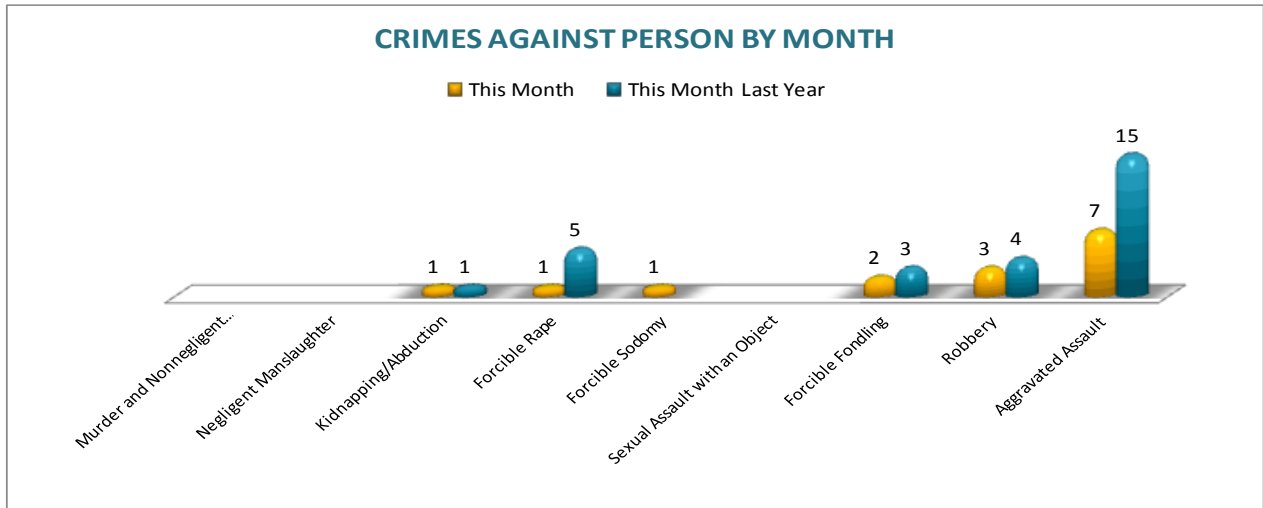


May 8, 2014

CRIMES AGAINST PERSONS

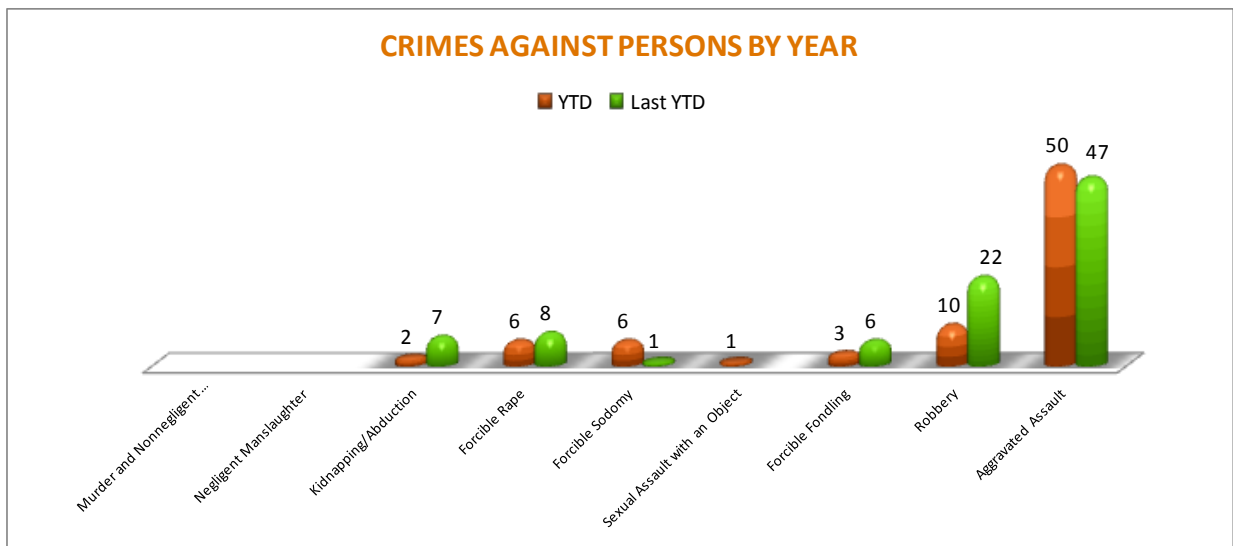
There are 9 crimes that make up this section. There were a total of 15 offenses in this area in April this year, a -46% decrease, comparing to April of the last year. There were 8 less Aggravated Assaults than last year and 4 less

Forcible Rapes. As demonstrated on the column chart below, there are no significant changes in frequencies for the crimes in this category.



A graph below shows the year to date data for Crimes against Persons, which amounts to a total of 78 offenses for this category of crimes, a -14% decrease, comparing to the year to date

data of last year. Aggravated Assaults have increased by 6%. Robberies decreased by -55%. There are no other significant changes in frequencies for the crimes in this category.

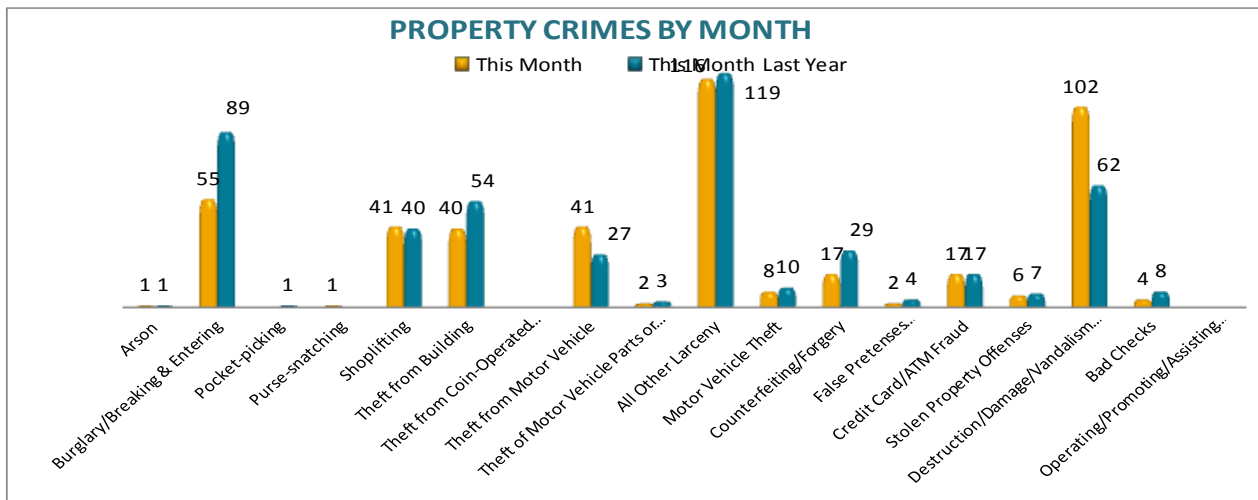


May 8, 2014

PROPERTY CRIMES

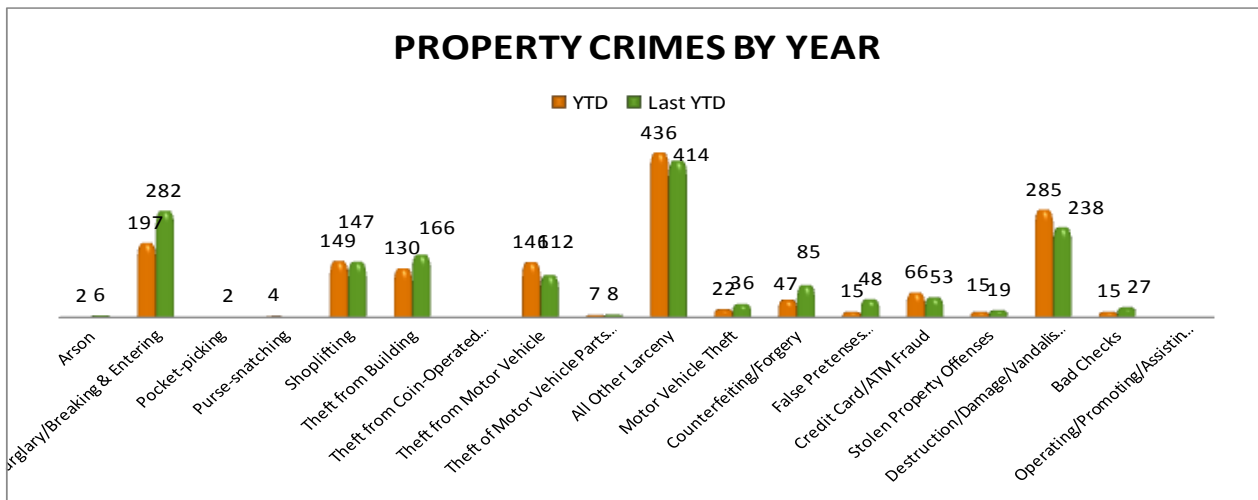
This section displays the criminal activity for 18 crimes, all against property. This month, there were a total of 453 Property Crimes, a -4% decrease, comparing to April of the last year. The data indicates change in Burglary/Breaking & Entering, down -38%, Theft from Building is

down -26%, and Counterfeiting / Forgery are down -41%, comparing to April of last year. Theft from Motor Vehicle is up 52% and Destruction / Damage / Vandalism has an increase of 65%.



To date, a total of 1,536 property offenses have been reported, a -4% decrease, comparing to the last year's data at this same time. The following changes are noted this year: Burglary /Breaking & Entering are down, -30%; Theft from Building is down, -22%, Motor Vehicle Theft is down, -39%; Counterfeiting/Forgery is down -45%; and False Pretenses / Swindle/

Confidence Game are down, -69%. Destruction / Damage/ Vandalism of Property have an increase of 20%, Theft from Motor Vehicle is up 30%, Credit Card/ATM Fraud is up 25%, and All Other Larceny is up 5%; There are no other significant changes noted for other offenses in this category.

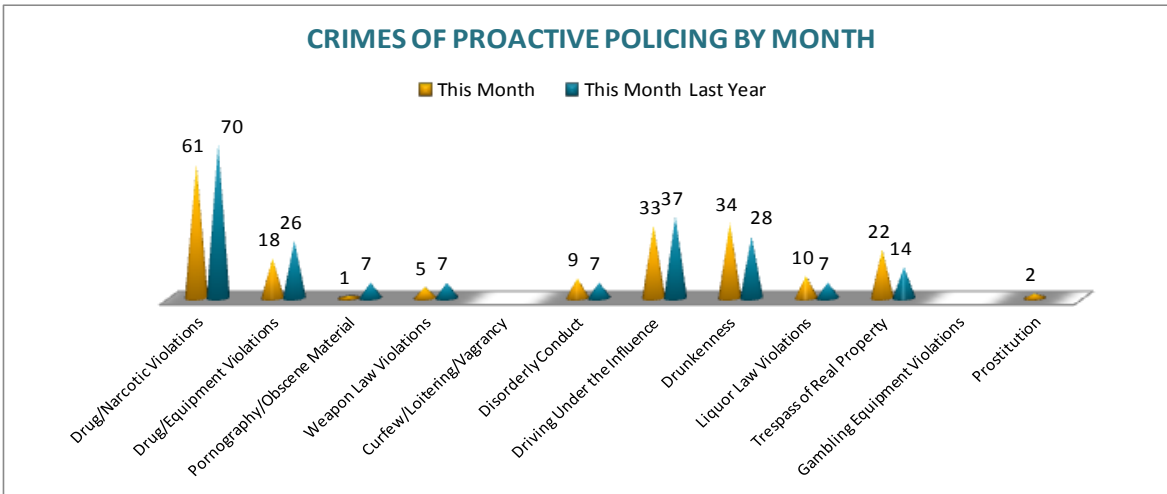


May 8, 2014

CRIMES OF PROACTIVE POLICING

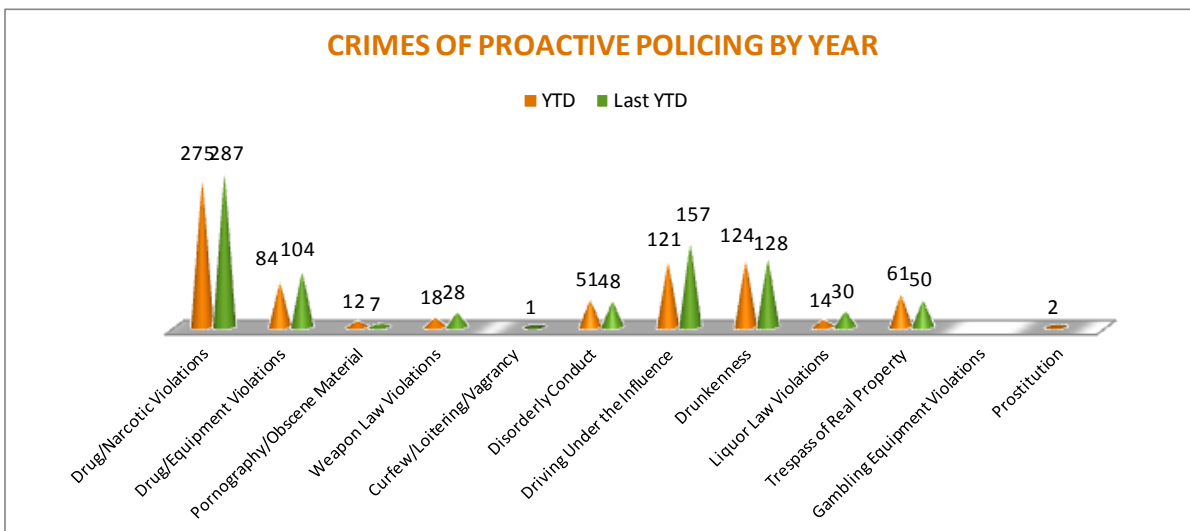
Crimes of Proactive Policing are those crimes that result from police officers actively policing the streets to combat certain types of street crime. As chart below indicates, twelve crimes fall under this category. A total of 195 offenses have been reported this month, down -8%,

comparing to April of the last year. Drug/Narcotic Violations have decreased by -13% and so did Drug/Equipment Violations, down -31%. There are no other significant changes noted for the offenses in this category.



To date for the year 2014, there have been 762 crimes of proactive policing reported, a -9% decrease when comparing to the last year's to date data. Drug/Equipment Violations are down -4%, Drug / Equipment Violations are down, -19%, Weapon Law Violations are down -36%,

Driving under Influence has decreased by -23%, and Liquor Law Violations are by -53%. Trespass of Real Property has increased by 22%. There are no other significant changes noted for other offenses in this category.

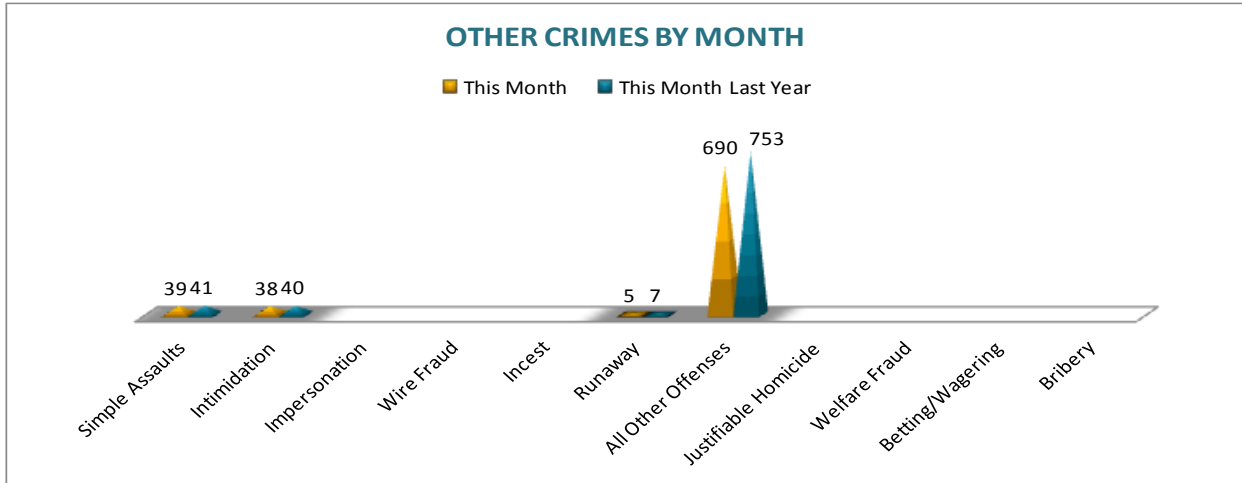


May 8, 2014

OTHER CRIMES

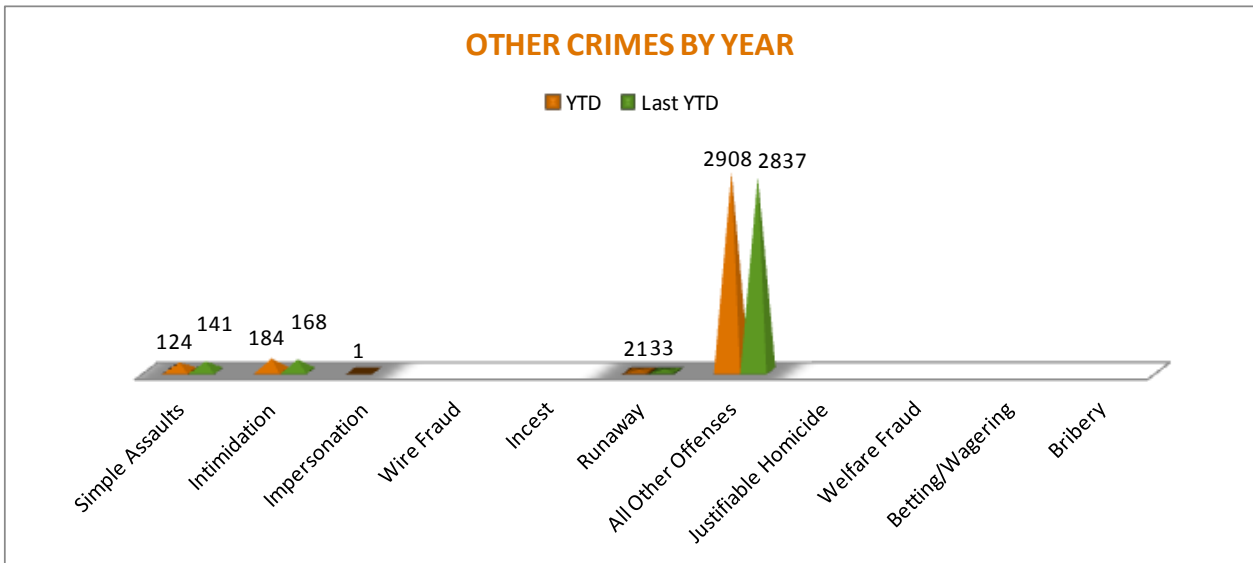
There are 11 crimes that fall into the Other Crimes category. This month, there have been a total of 772 Other Crimes reported, an -8% decrease, comparing to April of the last year. All

Other Offenses have decreased by -8%. No other significant changes are noted in this category of crimes this month.



To date this year, there have been 3,238 Other Crimes offenses reported, a 2% increase, comparing to the last year's to date data. While Intimidation offenses have increased by 10%, the Simple Assaults decreased by -12%. All

Other Offenses have increased by 3%; Runaway offenses are down, -36%. No other significant changes have been observed for other offenses within this category, comparing to the last year's data.

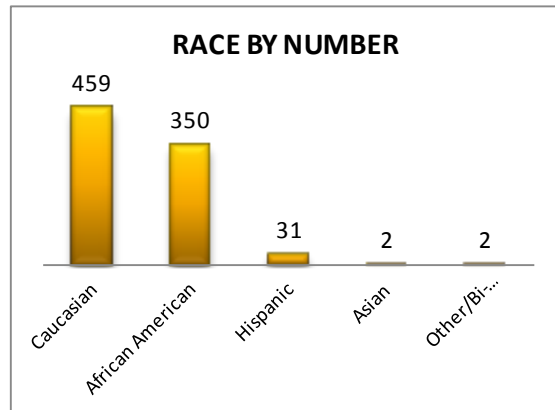
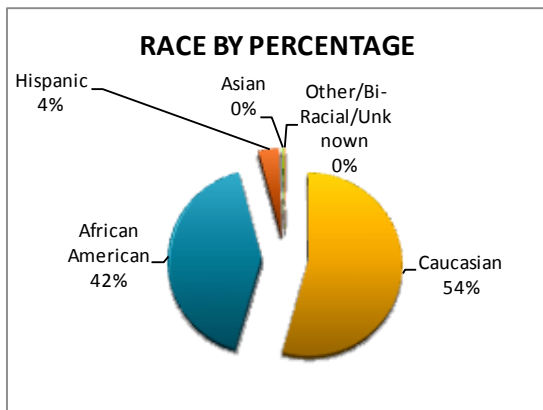
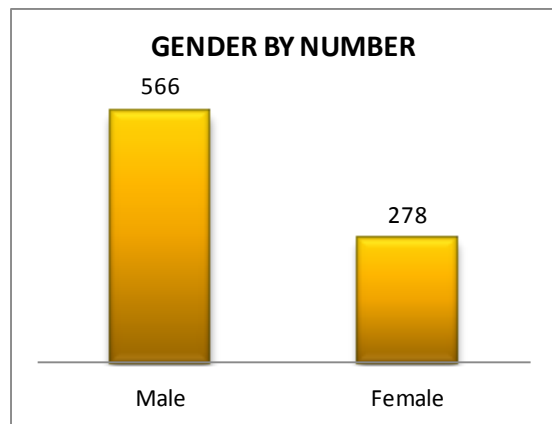
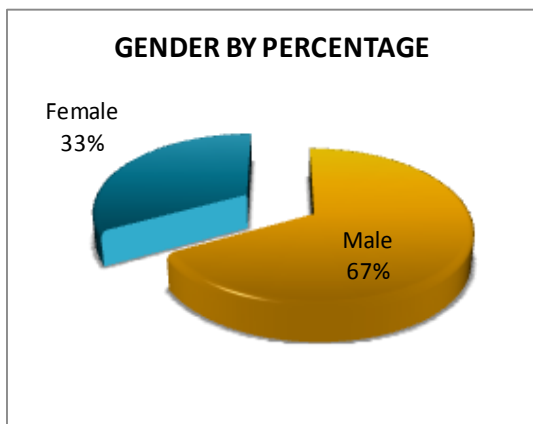


May 8, 2014

ARREST DEMOGRAPHICS

In April 2014, there were a total of 844 arrests carried out by the Jonesboro Police Department, down -10%, comparing with the last year's data for the month of April. The rate of arrests per offense has decreased by -4% this month, comparing to the rate from the previous year, while the rate of arrests per offense since January through April have increased by +35%. This section breaks down this month's arrests

by race and gender. The majority of arrestees, 67%, have been male ($n = 566$), as opposed to 33% of female arrestees ($n = 278$). As for the racial/ethnic composition, the majority of arrestees have been Caucasian (54%) and African American (42%), as opposed to Hispanic (4%), Asian (less than 1%), or other/unknown/bi-racial (*less than 1%*).

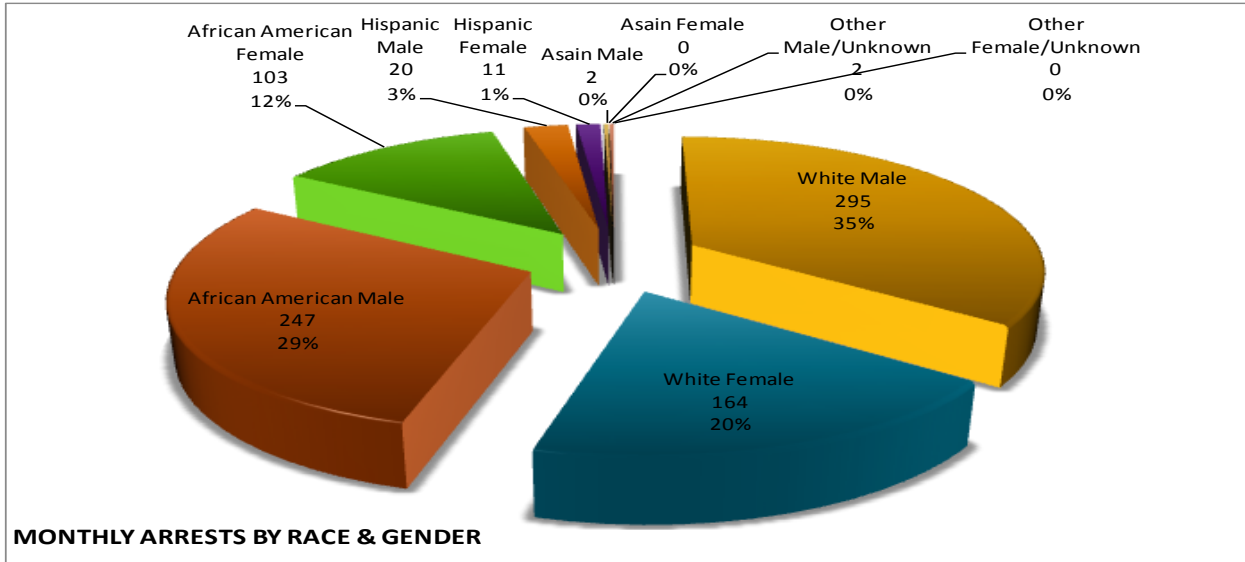


Caucasian males make up the majority, 35%, of arrestees this month ($n = 295$). African American males make up 29% of arrestees for the month of April ($n = 247$). Caucasian females make up 20% ($n = 164$) and African American

females make up 12% ($n = 103$) of all the arrestees this month. Hispanic males make up 3% ($n = 20$), while Hispanic Females make up 1% of arestees this month ($n = 11$).

MONTHLY REPORT APRIL 2014

May 8, 2014



EMERGENCY 911

Also known as Public Safety Answering Point (PSAP), the Emergency 911 Division is responsible for answering all calls from public for emergency assistance, accessing the needed information to best assist, and then assigning the most efficient and effective emergency response. In addition, this division is responsible

for setting priority call dispatching to field units including Police, Fire, and EMS. Emergency 911 also maintains all records for radio logs, calls for service, and other emergency service data collections.

Calls by Type	This Month	This Month Last Year	YTD	Last YTD	Change By Month	Change YTD
Land Line E911	911	652	3,463	2,770	40%	25%
Cell Phone E911	4,323	4,187	16,822	16,210	3%	4%
Admin Lines-non emer	13,409	14,542	53,237	57,910	-8%	-8%
TOTALS					N/C	N/C

Calls by Agency	This Month	This Month Last Year	YTD	Last YTD	Change By Month	Change YTD
Jonesboro PD Calls	8,111	6,841	29,437	26,819	19%	10%
Craighead Cty Sheriff	1,177	1,175	4,399	4,987	0%	-12%
Jonesboro Fire Dpt - dispatch	234	210	845	804	11%	5%
Jonesboro Fire Dpt - Med Asst	139	126	591	481	10%	23%
Craighead Cty - Fire	33	49	279	184	-33%	52%
Craighead Cty - 1st Responder	101	105	432	403	-4%	7%
Emerson Ambulance	246	243	1,149	1,047	1%	10%
Medic One	339	313	1,306	1,195	8%	9%
Air Evac	1	0	1	1	N/C	0%
Coroner	1	3	15	12	-67%	25%
ARK State Police	10	10	35	41	0%	-15%
Jonesboro Animal Control	10	1	18	5	900%	260%
Wreckers Called	190	162	911	668	17%	36%
TOTALS	10,592	9,238	39,418	36,647	15%	8%

MONTHLY REPORT APRIL 2014

May 8, 2014

Calls by Municipality	This Month	This Month Last Year	YTD	Last YTD	Change By Month	Change YTD
Bay PD	114	140	482	469	-19%	3%
Bono PD	286	250	1206	1035	14%	17%
Brookland PD	213	132	800	510	61%	57%
Caraway PD	64	50	192	375	28%	-49%
Cash PD	149	5	654	30	2880%	2080%
Egypt PD	1	7	14	18	-86%	-22%
Lake City PD	96	132	400	549	-27%	-27%
Monette PD	101	114	478	505	-11%	-5%
TOTALS	1,024	830	4,226	3,491	23%	21%

UNIFORM PATROL DIVISION

The UPD is responsible for responding to calls into the Emergency – 911 Division by civilians and are normally the first responders. Jonesboro is divided into 6 patrol districts. Officers from UPD are assigned to a district and

work the same district every shift. In addition, when a Traffic Officer is not available, a UPD Officer will respond to traffic accidents and assist in directing traffic when necessary.

Incidents	This Month	This Month Last Year	YTD	Last YTD	Change By Month	Change YTD
Calls for Service	8,111	6,842	29,436	28,169	19%	4%
Complaints	4,857	3,831	18,950	15,785	27%	20%
Assists	1,002	917	2,991	4,793	9%	-38%
Incident Reports	935	896	3,148	3,378	4%	-7%
Street Accidents	60	71	305	295	-15%	3%
Private Property Accidents	43	34	149	191	26%	-22%
Traffic Stops	3,254	2,125	10,486	8,547	53%	23%
Traffic Citations	567	609	1,875	2,760	-7%	-32%
Written Warnings	1,968	980	5090	3,570	101%	43%
DWI	28	30	103	164	-7%	-37%
Mis. Arrests	460	477	1,632	1,895	-4%	-14%
Felony Arrests	115	95	392	354	21%	11%
Warrants Served	1,008	1,222	3,863	5,369	-18%	-28%
Alarms	360	313	1,607	1,259	15%	28%
Hours Worked	8,092	7,124	31,210	36,162	14%	-14%

PROWL

The Prowl unit is a uniformed street crimes unit specializing in criminal patrol, narcotics enforcement, gang investigation, and prostitution activity. The unit conducts directed

patrols, investigates citizen complaints of street-level criminal activity, and directly assists the 2nd Judicial Drug Task Force. PROWL also assists any division within the Jonesboro Police Department at any time when needed.

MONTHLY REPORT APRIL 2014

May 8, 2014

Incidents	This Month	This Month Last Year	YTD	Last YTD	Change By Month	Change YTD
Street Accidents	This Month	This Month Last Year	YTD	Last YTD	#VALUE!	#VALUE!
Private Property Accidents	0	0	0	0	N/C	N/C
Traffic Citations	0	1	0	1	-100%	-100%
DWI	19	18	47	60	6%	-22%
Mis. Arrests	0	0	0	0	N/C	N/C
Felony Arrests	105	152	431	445	-31%	-3%
Drug Arrests	21	24	99	99	-13%	0%
Public Intoxication Arrests	20	31	81	123	-35%	-34%
Calls For Service	0	0	0	0	N/C	N/C
Alarms	38	84	180	250	-55%	-28%
Parking Citations	0	0	0	0	N/C	N/C
Written Warnings	0	0	0	0	N/C	N/C
Assists	65	70	174	235	-7%	-26%
TOTALS	0	0	0	0	N/C	N/C
Value of Drugs Seized	\$3,610.00	\$ 23,000.00	\$ 12,335.00	\$ 58,840.00	-84%	-79%
Value of Asstes Seized	\$ 756.00	\$ -	\$ 3,093.00	\$ 3,053.00	N/C	1%
Patrol Miles	7,110	7,550	22,410	29,200	-6%	-23%

CRIMINAL INVESTIGATIVE DIVISION

The CID is responsible for conducting follow-up investigations into criminal acts reported to the Jonesboro Police Department. The primary goal is to collect and present evidence that

conclusively leads to a successful arrest. Additionally, CID is charged with clearing additional crimes, recovering stolen property, preventing additional crimes, and gathering intelligence information.

Investigations	This Month	This Month Last Year	YTD	Last YTD	Change By Month	Change YTD
Criminal Investigations Assigned	132	117	469	441	13%	6%
Criminal Investigations Closed	90	86	352	309	5%	14%
Cleared by Arrests	53	62	202	200	-15%	1%
Unfounded	8	8	40	28	0%	43%
Exceptionally Cleared	12	13	61	50	-8%	22%
Filed With Prosecutors Office	8	3	33	23	167%	43%
Crimes Against Persons	This Month	This Month Last Year	YTD	Last YTD	Change By Month	Change YTD
Criminal Investigations Closed	21	29	97	102	-28%	-5%
Cleared by Arrests	16	25	64	74	-36%	-14%
Unfounded	2	2	10	10	0%	0%
Exceptionally Cleared	1	2	16	11	-50%	45%
Filed With Prosecutors Office	2	0	7	7	N/C	0%
Property Crimes	This Month	This Month Last Year	YTD	Last YTD	Change By Month	Change YTD
Criminal Investigations Assigned	90	84	310	312	7%	-1%
Criminal Investigations Closed	60	51	223	167	18%	34%
Unfounded	6	3	28	10	100%	180%
Exceptionally Cleared	11	10	44	33	10%	33%
Filed With Prosecutors Office	0	2	18	8	-100%	125%
Crimes Against Children	This Month	This Month Last Year	YTD	Last YTD	Change By Month	Change YTD
Criminal Investigations Assigned	17	7	38	26	143%	46%
Criminal Investigations Closed	3	6	19	32	-50%	-41%
Cleared by Arrests	2	1	13	10	100%	30%
Unfounded	1	3	3	9	-67%	-67%

MONTHLY REPORT APRIL 2014

May 8, 2014

Filed With Prosecutors Office	0	1	2	8	-100%	-75%
Miscellaneous Investigations Assigned	6	0	15	7	N/C	114%
Miscellaneous Investigations Cleared	6	0	12	3	N/C	300%
FINGERPRINTS	This Month	This Month Last Year	YTD	Last YTD	Change By Month	Change YTD
Rolled for the Public	143	198	453	897	-28%	-49%

WARRANTS

The Warrants Division is responsible for serving warrants, criminal summonses, and subpoenas that are issued by the District Court. On city court days, the Warrants Division provides a bailiff for court and a transport officer. In addition, this Division is responsible for

transporting wanted persons arrested in other jurisdictions back to Jonesboro. The STEP program operates within this division and is a grant-funded operation in which officers can get paid overtime to enforce the safety belt law.

Arrests	This Month	This Month Last Year	YTD	Last YTD	Change By Month	Change YTD
Misdemeanor	1	1065	1	3792	-100%	-100%
Felony	1	0	1	0	N/C	N/C
Total Arrests	2	1065	2	3792	-100%	-100%

Warrants by Activity	This Month	This Month Last Year	YTD	Last YTD	Change By Month	Change YTD
Subpoenas	350	388	827	2325	-10%	-64%
Commitments	3	2	41	15	50%	173%
Traffic Citations	982	6	1774	8	16267%	22075%
Complaints	1	4	1	9	-75%	-89%
Assist	4		5	2	N/C	150%
Alarms	0		3	0	N/C	N/C

Hours by Activity	This Month	This Month Last Year	YTD	Last YTD	Change By Month	Change YTD
SI Criminal	146	248	296	855.15	-41%	-65%
Court	127.5	120	256	472.17	6%	-46%
Prisoner Transport	49.5	27	97	117.17	83%	-17%

Hours Worked	This Month	This Month Last Year	YTD	Last YTD	Change By Month	Change YTD
Regular Hours Worked	658	639.5	1233.5	2431.5	3%	-49%
Overtime Hours Worked	9.5	2	17	12.8	375%	33%
TOTAL Hours Worked	667.5	641.5	1250.5	2444.3	4%	-49%

Mileage	This Month	This Month Last Year	YTD	Last YTD	Change By Month	Change YTD
Total Mileage	3470	3336	6786	12026	4%	-44%

STEP	This Month	This Month Last Year	YTD	Last YTD	Change By Month	Change YTD
DWI Arrest	0		0	0	N/C	N/C
DUI Arrest	0		0	0	N/C	N/C
Traffic Citations	91		91	125	N/C	-27%
Felony Arrests	0		0	1	N/C	-100%
Drug Arrests	0		0	0	N/C	N/C
STEP TOTALS	91	0	91	126	N/C	-28%
STEP Hours Worked	126		126	135	N/C	-7%
STEP Miles Driven	635		635	776	N/C	-18%

MONTHLY REPORT APRIL 2014

May 8, 2014

DRUG TASK FORCE

The DTF is responsible for investigating major drug traffickers in the area, including all types of illegal drugs.

The DTF works closely with local, state, and federal agencies to eradicate drugs from the community.

INVESTIGATIONS	This Month	This Month Last Year	YTD	Last YTD	Change By Month	Change YTD
Opened	49	14	112	74	250%	51%
Closed	0	15	56	59	-100%	-5%
TOTAL	49	29	168	133	69%	26%
With Nexus to Jonesboro	This Month	This Month Last Year	YTD	Last YTD	Change By Month	Change YTD
Opened	49	17	100	78	188%	28%
Closed	0	0	0	0	N/C	N/C
TOTAL	49	17	100	78	188%	28%
Outside Jonesboro (No Known Nexus)	This Month	This Month Last Year	YTD	Last YTD	Change By Month	Change YTD
Opened	0	0	0	0	1300%	N/C
Closed	0	0	0	0	0%	N/C
TOTAL	0	0	0	0	N/C	N/C
ASSISTANCE RENDERED	This Month	This Month Last Year	YTD	Last YTD	Change By Month	Change YTD
Assist to Outside Agencies	0	0	4	0	N/C	N/C
Assist to Jonesboro UPD/CID	3	7	20	33	-57%	-39%
ARRESTS	This Month	This Month Last Year	YTD	Last YTD	Change By Month	Change YTD
Miscellaneous	17	6	42	24	183%	75%
Felony	38	17	130	101	124%	29%
Marijuana	2	3	9	25	-33%	-64%
Cocaine	0	3	2	7	-100%	-71%
Crack Cocaine	2	0	10	4	N/C	150%
Methamphetamine/ICE	13	6	41	38	117%	8%
LSD	0	0	0	0	N/C	N/C
Extasy (MDMA or Other Designer Drug)	0	0	1	0	N/C	N/C
Prescription	0	5	9	15	-100%	-40%
Opiates (Heroin, Opium)	0	0	0	0	N/C	N/C
Labs	0	1	0	1	-100%	-100%
All Other Drug Offenses	11	4	31	33	175%	-6%
ASSET FORFEITURE	This Month	This Month Last Year	YTD	Last YTD	Change By Month	Change YTD
Vehicles Seized (No.)	0	0	1	0	N/C	N/C
Value of Assets Seized(Includes Value of vehicles)	\$ -	\$ -	\$ 5,894.00	\$ -	N/C	N/C
Asset Value Awarded to Jonesboro PD (State)	\$ -	\$ -	\$ -	\$ -	N/C	N/C
Asset Value Awarded to Jonesboro PD (Federal)	\$ -	\$ -	\$ -	\$ -	N/C	N/C
Asset Value Awarded to Jonesboro PD (Total)	\$ -	\$ -	\$ -	\$ -	N/C	N/C
ARRESTS DEMOGRAPHICS	This Month	This Month Last Year	YTD	Last YTD	Change By Month	Change YTD
White	22	7	65	49	214%	33%
African American	5	4	20	22	25%	-9%
Latino	0	1	2	4	-100%	-50%
Asian	0	0	0	0	N/C	N/C
Other/BI-Racial	0	0	0	0	N/C	N/C
Male	18	12	63	58	50%	9%
Female	9	0	21	18	N/C	17%
White Male	13	7	44	35	86%	26%
White Female	9	0	18	14	N/C	29%
African American Male	5	4	16	19	25%	-16%
African American Female	0	0	3	3	N/C	0%
Latino Male	0	1	2	3	-100%	-33%
Latino Female	0	0	0	0	N/C	N/C
Asian Male	0	0	0	0	N/C	N/C
Asian Female	0	0	0	0	N/C	N/C
Other/BI-Racial Male	0	0	0	0	N/C	N/C
Other/BI-Racial Female	0	0	0	0	N/C	N/C

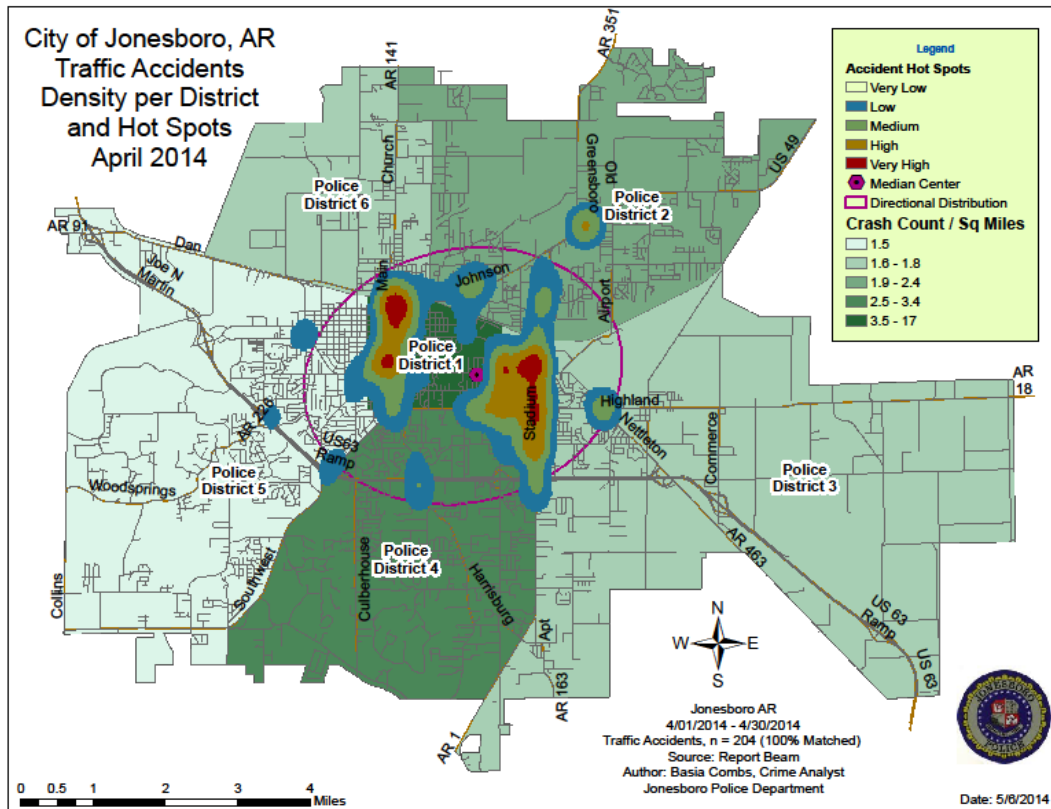
May 8, 2014

TRAFFIC

The Traffic Enforcement Unit responds to traffic accidents and provides increased enforcement in particularly challenging areas. This unit also provides extra coverage for specific congestion

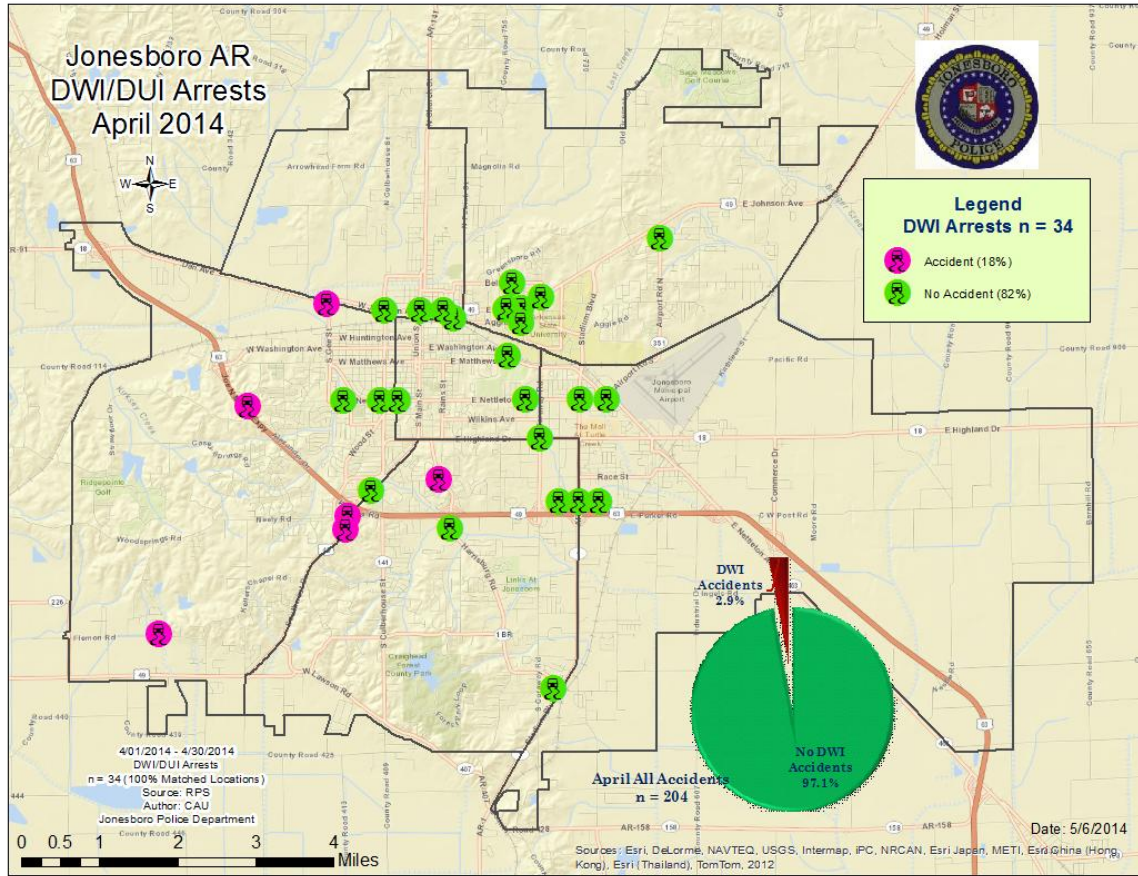
problems and special events in the community. Last, they work details targeting specific issues, such as DWI enforcement and traffic safety checkpoints.

Incidents	This Month	This Month Last Year	YTD	Last YTD	Change By Month	Change YTD
Street Accidents	141	147	543	548	-4%	-1%
Private Property Accidents	49	40	176	139	23%	27%
Traffic Citations	215	118	552	383	82%	44%
DWI	0	4	9	6	-100%	50%
Mis. Arrests	18	6	58	23	200%	152%
Felony Arrests	0	2	3	4	-100%	-25%
Drug Arrests	0	0	0	0	N/C	N/C
Public Intoxication Arrests	0	0	0	0	N/C	N/C
Calls For Service	90	263	598	842	-66%	-29%
Alarms	0	0	0	0	N/C	N/C
Parking Citations	0	0	0	0	N/C	N/C
Written Warnings	306	144	1123	373	113%	201%
TOTALS	819	724	3062	2318	13%	32%
Value of Asstes Seized	\$ -	\$ -	\$ -	\$ -	N/C	N/C
Patrol Miles	5,683	4,011	21,023	15,089	42%	39%
Hours Worked	936.5	815	3865.5	3023	15%	28%



MONTHLY REPORT APRIL 2014

May 8, 2014



ANIMAL CONTROL

The Animal Control Division is responsible for educating the public on safe and humane issues regarding animal treatment, enforcing all animal laws and ordinances, assisting the public

in resolving animal issues, and protecting the safety and welfare of the citizens and animals in this community.

Incident/Service	This Month	This Month Last Year	YTD	Last YTD	Change By Month	Change YTD
Barking Complaints	12	21	28	43	-43%	-35%
Bite Reports	2	7	14	16	-71%	-13%
Door Hangers	58	61	239	204	-5%	17%
Welfare Checks	83	70	225	174	19%	29%
Advised of Rights	1050	1083	3958	3780	-3%	5%
Incident Reports	3	6	13	10	-50%	30%
Gone on Arrival	62	60	205	181	3%	13%
Complaints	887	801	3462	2900	11%	19%
Desk Complaints	1603	1483	5713	5681	8%	1%
Captured Dogs	157	128	577	538	23%	7%
Captured Cats	40	12	84	58	233%	45%
Captured Wildlife	21	66	47	109	-68%	-57%
Chemical Captures	2	1	4	4	100%	0%
Traps	35	34	82	89	3%	-8%
Deceased Animals	86	90	253	228	-4%	11%
Assist J.P.D.	10	4	23	15	150%	53%
Assist C.S.O.	13	0	29	4	N/C	625%
Public Relations	309	292	1511	1348	6%	12%

MONTHLY REPORT APRIL 2014

May 8, 2014

Incident/Service	This Month	This Month Last Year	YTD	Last YTD	Change By Month	Change YTD
CITATIONS ISSUED	72	43	240	141	67%	70%
WARNINGS ISSUED	162	98	516	378	65%	37%
Physical Arrests	49	2	80	11	2350%	627%
City Warrants Served	49	4	82	30	1125%	173%
County Warrants Served	0	0	2	2	N/C	0%
Felony Bench Warrants	0	0	0	1	N/C	-100%
Euthanized	65	54	260	280	20%	-7%
Deceased Animals Landfill lbs.	2680	6420	9360	15880	-58%	-41%
Wildlife Euthanized	21	66	47	10915	-68%	-100%
Sent to Rescue Centers	15	17	47	19	-12%	147%
Adoptions	34	43	175	151	-21%	16%
Miles Driven	10,361	9382	33,302	34,327	10%	-3%

FLEET MAINTNANCE

The Fleet Maintenance is responsible for all of the police vehicle maintenance upkeep, cleanliness, and purchasing. In addition, this

Division handles most of the purchasing of equipment, supplies, and uniforms for all of the Police Department.

Repair Costs by Model Year	This Month	This Month Last Year	YTD	Last YTD	Change By Month	Change YTD
95-99	\$ -	\$ -	\$ -	\$ -	N/C	N/C
2000	\$ -	\$ -	\$ 2,068.09	\$ -	N/C	N/C
2001	\$ -	\$ -	\$ -	\$ -	N/C	N/C
2002	\$ -	\$ -	\$ -	\$ -	N/C	N/C
2003	\$ -	\$ 977.43	\$ -	\$ 1,205.15	-100%	-100%
2004	\$ -	\$ -	\$ -	\$ 37.43	N/C	-100%
2005	\$ -	\$ -	\$ -	\$ -	N/C	N/C
2006	\$ 77.90	\$ 12,089.21	\$ 5,826.76	\$ 14,317.04	-99%	-59%
2007	\$ 724.80	\$ 5,324.83	\$ 8,608.06	\$ 10,171.13	-86%	-15%
2008	\$ 152.80	\$ 974.38	\$ 7,807.40	\$ 2,244.87	-84%	248%
2009	\$ 1,100.64	\$ 444.69	\$ 2,954.11	\$ 1,367.86	N/C	N/C
2010	\$ -	\$ 11.61	\$ 1,896.59	\$ 442.57	N/C	N/C
2011	\$ 181.04	\$ 642.16	\$ 585.61	\$ 1,108.59	N/C	N/C
2012	\$ -	\$ -	\$ -	\$ -	N/C	N/C
2013	\$ 322.25	\$ -	\$ 486.63	\$ -	N/C	N/C
2014	\$ 1,500.00	n/a	\$ 1,767.95	n/a	N/C	N/C
Totals	\$ 4,059.43	\$ 20,464.31	\$ 32,001.20	\$ 30,894.64	N/C	N/C
Routine Preventative Maintenance by Model Year	This Month	This Month Last Year	YTD	Last YTD	Change By Month	Change YTD
95-99	\$ -	\$ 174.13	\$ -	\$ 174.13	-100%	-100%
2000	\$ -	\$ -	\$ 20.00	\$ 20.00	N/C	0%
2001	\$ -	\$ 20.00	\$ -	\$ 186.59	-100%	-100%
2002	\$ -	\$ -	\$ -	\$ -	N/C	N/C
2003	\$ -	\$ -	\$ 60.00	\$ 327.59	N/C	-82%
2004	\$ 20.00	\$ 20.00	\$ 40.00	\$ 545.89	0%	-93%
2005	\$ -	\$ 833.58	\$ 502.45	\$ 1,341.32	-100%	-63%
2006	\$ 1,344.12	\$ 2,024.15	\$ 3,418.67	\$ 6,393.65	-34%	-47%
2007	\$ 254.00	\$ 2,265.56	\$ 3,441.65	\$ 5,174.90	-89%	-33%
2008	\$ 80.00	\$ 84.50	\$ 906.27	\$ 2,092.45	-5%	-57%
2009	\$ 905.42	\$ 868.57	\$ 2,649.53	\$ 2,539.96	N/C	N/C
2010	\$ -	\$ -	\$ 40.00	\$ 523.89	N/C	N/C
2011	\$ 1,670.36	\$ 820.99	\$ 5,866.37	\$ 5,135.34	N/C	N/C
2012	\$ 20.00	\$ -	\$ 752.09	\$ 353.42	N/C	N/C
2013	\$ 20.00	\$ -	\$ 520.32	\$ 732.37	N/C	N/C
2014	\$ 40.00	n/a	\$ 1,753.55	n/a	N/C	N/C
Totals	\$ 4,353.90	\$ 7,111.48	\$ 19,970.90	\$ 25,541.50	N/C	N/C

MONTHLY REPORT APRIL 2014

May 8, 2014

RECORDS

The Records Division is responsible for providing administrative and clerical support to the department. Major responsibilities include entering the accident and incident reports and tickets into the records database management

system, assisting the general public for report requests, performing criminal backgrounds, serving as a switchboard at times, performing validations, and setting up and managing the payment plans out of court.

RECORDS	This Month	This Month Last Year	YTD	Last YTD	Change By Month	Change YTD
Incident/Arrest Reports Processed	1279	1300	4815	5090	-2%	-5%
Accident Reports Processed	204	214	908	824	-5%	10%
Citations Processed	3576	3701	14024	16769	-3%	-16%
Warnings Processed	2436	1044	5638	3443	133%	64%
Backgrounds	3	8	32	56	-63%	-43%
Fingerprints	0	0	0	388	N/C	-100%
Photos	0	0	1	0	N/C	N/C
Accident Requests	61	99	290	500	-38%	-42%
Accident Requests Online	157	142	541	436	11%	24%

PROFESSIONAL STANDARDS

The Office of Professional Standards, a unit within Administration, is charged with the compilation and updating of an extensive set of policies and procedures and providing a general operations guideline and code of conduct for officers to follow. In the event that a member of

the public does experience a negative interaction with an officer, mechanisms are in place for them to lodge a complaint. All complaints are reviewed and investigations completed in a timely manner.

Professional Standards	This Month	This Month Last Year	YTD	Last YTD	Change By Month	Change YTD
Opened (TOTAL)	11	5	24	17	120%	41%
Closed	11	5	23	17	120%	35%
Inquiries	5	3	16	13	67%	23%
Formal Investigations	6	0	10	2	N/C	400%
Sustained	4	2	10	11	100%	-9%
Not-Sustained	0	0	4	1	N/C	300%
Exonerated	0	0	1	0	N/C	N/C
Unfounded	7	1	8	3	600%	167%

END OF REPORT

May 8, 2014



Contact Information

Basia Combs, MPA, CCIA | Crime Analyst | Office of Crime Analysis & Criminal Intelligence
Jonesboro Police Department | 410 W Washington Ave | Jonesboro, AR 72401
Ph: 870-336-7196 | E-mail: bcombs@jonesboro.org | www.jonesboropolice.com
