

# JONESBORO POLICE DEPARTMENT

## Monthly Report

February 2013

Office of Crime Analysis & Criminal Intelligence  
410 W Washington Ave  
Jonesboro, AR 72401  
Basia Combs, Crime Analyst

### IN THIS REPORT

<b>CRIME ANALYSIS</b> .....	1
Total Crime .....	2
Crimes against Person .....	3
Property Crimes .....	4
Crimes of Proactive Policing	5
Other Crimes.....	6
Arrests Demographics .....	7
<b>EMERGENCY 911</b> .....	9
<b>UPD</b> .....	9
<b>_PROWL</b> .....	10
<b>CID</b> .....	10
<b>WARRANTS</b> .....	11
<b>DRUG TASK FORCE</b> ....	12
<b>TRAFFIC</b> .....	13
Maps .....	14
<b>ANIMAL CONTROL</b> .....	15
<b>FLEET MAINTENANCE</b>	15
<b>RECORDS</b> .....	16
<b>PROFESSIONAL</b>	
<b>STANDARDS</b> .....	16

*The purpose of the Jonesboro Police Department Monthly Report is to compile data into one integrated report for review, allowing for a seamless flow of information for better decision-making. After each department collates their monthly numbers and sends it to the Office of Crime Analysis, it is organized into sections of departmental data, analyzed and packaged, and finally disseminated to department heads, the Chief of Police, the City Mayor, and the City Council. Major sections include Crime Analysis, Emergency 911, Uniform Police Division, Prowl, Criminal Investigative Division, Warrants, Drug Task Force, Traffic, Parking Enforcement, Animal Control, Fleet Maintenance, Records, and Professional Standards.*

### **CRIME ANALYSIS**

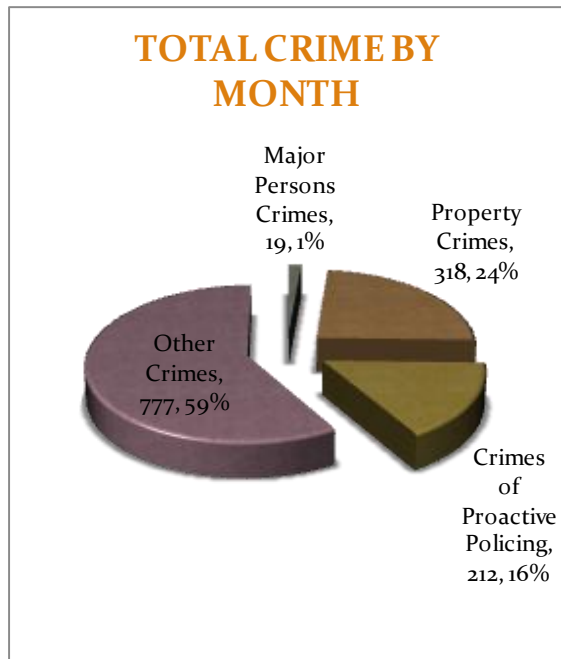
The Crime Analysis division consists of one Crime Analyst and one part-time Crime Analyst Assistant. The Crime Analyst position is responsible for the analysis and dissemination of crime activity data and the collection and maintenance of crime intelligence information for the city of Jonesboro. Additionally, the Crime Analyst is charged with providing the department with current and accurate crime maps, presenting crime activity data to audiences of interest, and with responding to requests for crime data from civilians and departmental staff. Data exported from this division is used by field agents for more effective, efficient policing, administration for improved staffing decisions, and the Mayor's office for community decision making and enhanced public relations. The following section is broken down into Total Crime, Crimes against Persons, Property Crimes, Crimes of Proactive Policing, Other Crimes, Arrest Demographics, and Total Crime Monthly Comparison.

# MONTHLY REPORT FEBRUARY 2013

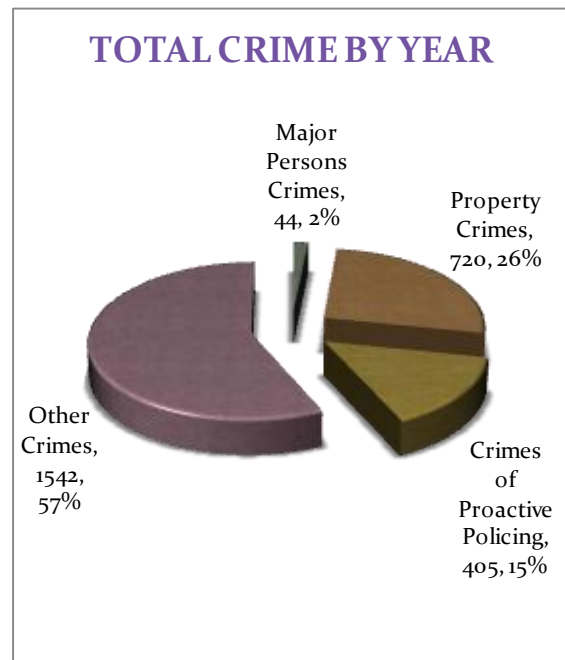
March 8, 2013

## TOTAL CRIME

The crime activity for the month of February 2013 was at a total of 1,326 NIBRIS reportable offenses, a 14% decrease, comparing to the total of offenses reported in February of the last year. With Jonesboro population estimated to be equal to 69,856, the crime rate in February of this year was at 19 crimes per 1,000 population, comparing to 22 crimes per 1,000 population last year<sup>1</sup>, a 15% decrease. As indicated on a pie chart below, Other Crimes absorb the majority, 59%, of this month's crime activity ( $n = 777$ ). Property Crimes fall into a second place and comprise of 24% of all the crimes ( $n = 318$ ). Following in third and fourth places are Crime of Proactive Policing, comprising of 16% ( $n = 212$ ) of all the crimes, and Crimes against Persons, comprising of 1% ( $n = 19$ ) of all the crimes this month.



Year to date data includes number of crimes from January through February 2013. A total of 2,711 NIBRIS reportable offenses were reported in 2013, a 17% decrease, comparing to the same period last year. The year to date crime rate amounts to 39 offenses per 1,000 population, compared to 47 offenses per 1,000 population last year (down 18%). To date this year, 57% of all the crimes is attributed to Other Crimes category ( $n = 1,542$ ). Property Crimes comprise of 26% of all the crimes to date, where  $n = 720$ . Crimes of Proactive Policing amount to 15% ( $n = 405$ ) of all the crimes; Crimes against Persons comprise of 2% of a total year to date number of crimes ( $n = 44$ ).

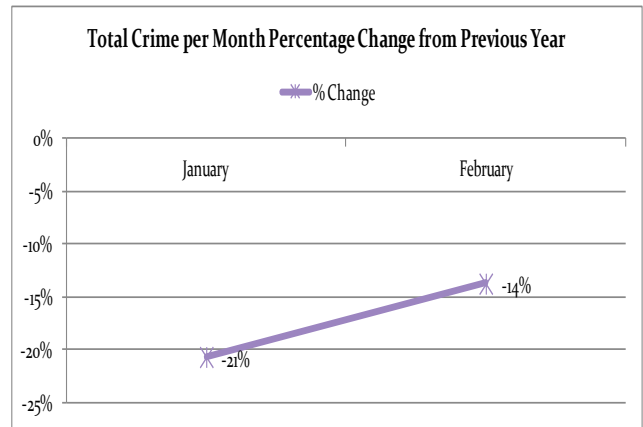
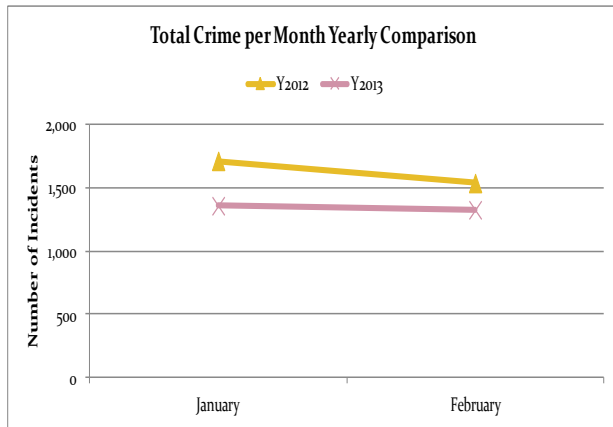


Line charts on the following page depict frequencies of crime and yearly percentage change from the last year.

<sup>1</sup> Note: Population numbers are based on 2011 & 2012 population estimate, where 2011 population estimate is 68,547.

# MONTHLY REPORT FEBRUARY 2013

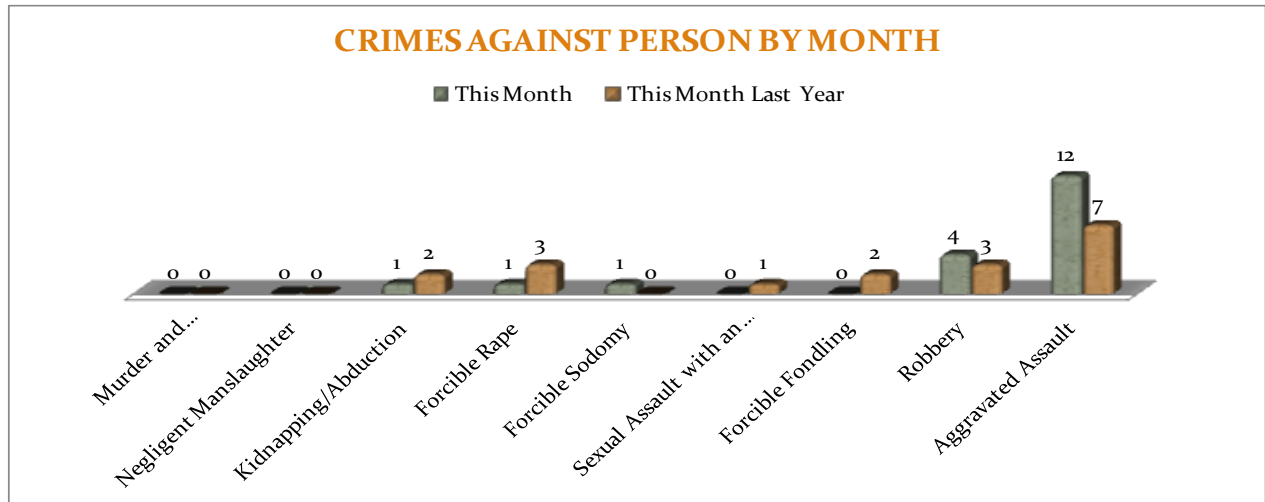
8 March 2013



## CRIMES AGAINST PERSONS

There are 9 crimes that make up this section. There were a total of 19 offenses in this area in February this year, a 6% increase, comparing to the last year's total in February. This increase is largely due to the 5 more incidents of Aggravated Assaults

reported in February, resulting in a 71% increase and affecting the overall percentage change for the Major Persons Crimes. As demonstrated on the bar chart below, there are no significant changes in frequencies for the crimes in this category.

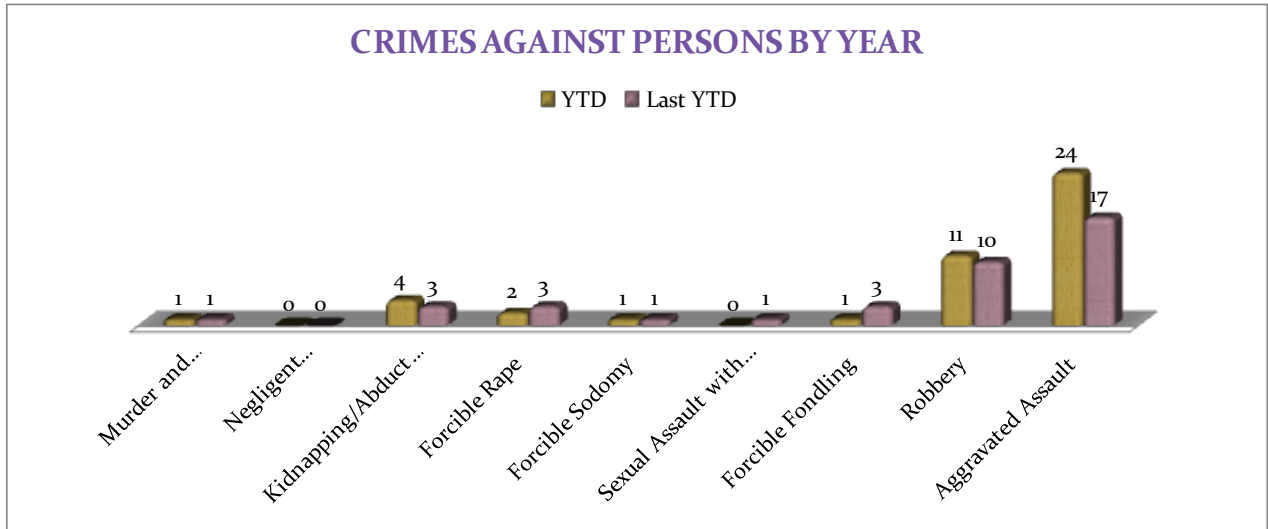


A bar graph on the following page shows the year to date data for Crimes against Persons, which amounts to a total of 44 incidents for this category of crimes, a 13% decrease, comparing to the year to date data of last

year. Aggravated Assaults are up 41%. Forcible rapes are down 33%. As demonstrated on the bar chart below, there are no significant changes in frequencies for the crimes in this category.

MONTHLY REPORT FEBRUARY 2013

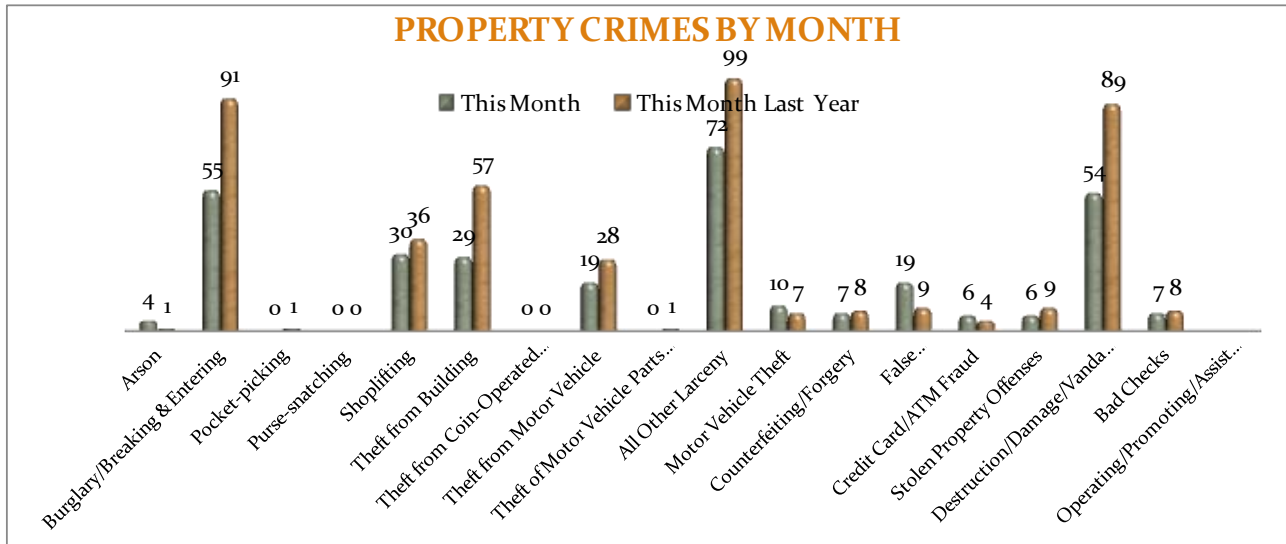
8 March 2013



**PROPERTY CRIMES**

This section displays the criminal activity for 18 crimes, all against property. This month, there were a total of 318 Property Crimes, a 29% decrease comparing to February of the last year. The data indicates a significant change in Theft from Building (down 49%), Burglary/Breaking & Entering (down 40%),

Theft from Motor Vehicle (down 32%), All Other Larceny (down 27%), Destruction/Damage/Vandalism (down 39%). We had 3 more Arson this month, comparing to the last year. No other significant changes are noted this month for this crime category.

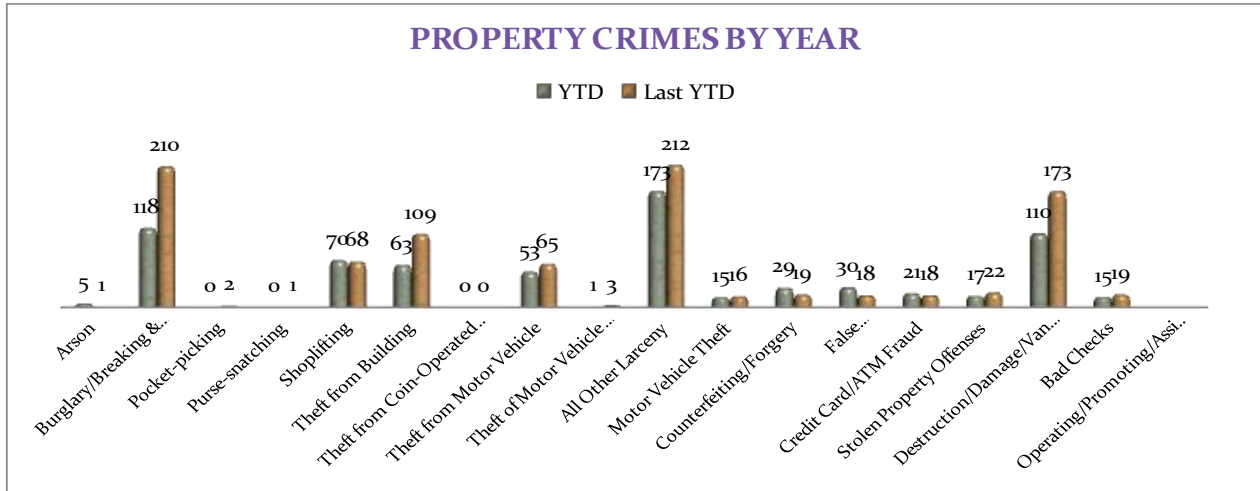


# MONTHLY REPORT FEBRUARY 2013

8 March 2013

To date this year, 720 property offenses have occurred, a 25% decrease, comparing to the last year's data at this same time. The following significant changes are noted this year: Theft from Building (down 32%), All

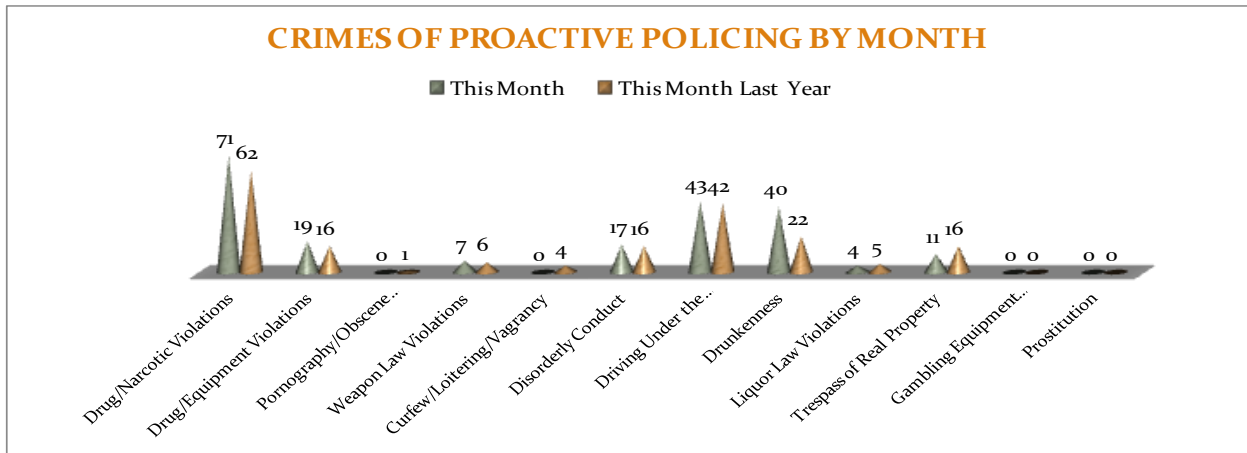
Other Larceny (down 18%), and Destruction/ Damage/Vandalism (down 36%), Counterfeiting / Forgery (up 53%), and False Pretenses/Swindle/Confidence Game (up 67%.



## CRIMES OF PROACTIVE POLICING

Crimes of Proactive Policing are those crimes that result from police officers actively policing the streets to combat certain types of street crime. As a chart below indicates, twelve crimes fall under this category. A total of 212 offenses have been reported this

month, a 12% increase, comparing to February of the last year. Drug/Narcotic Violations are 15% up and Drunkenness is 82% up. Trespass of Real Property is 31% down.

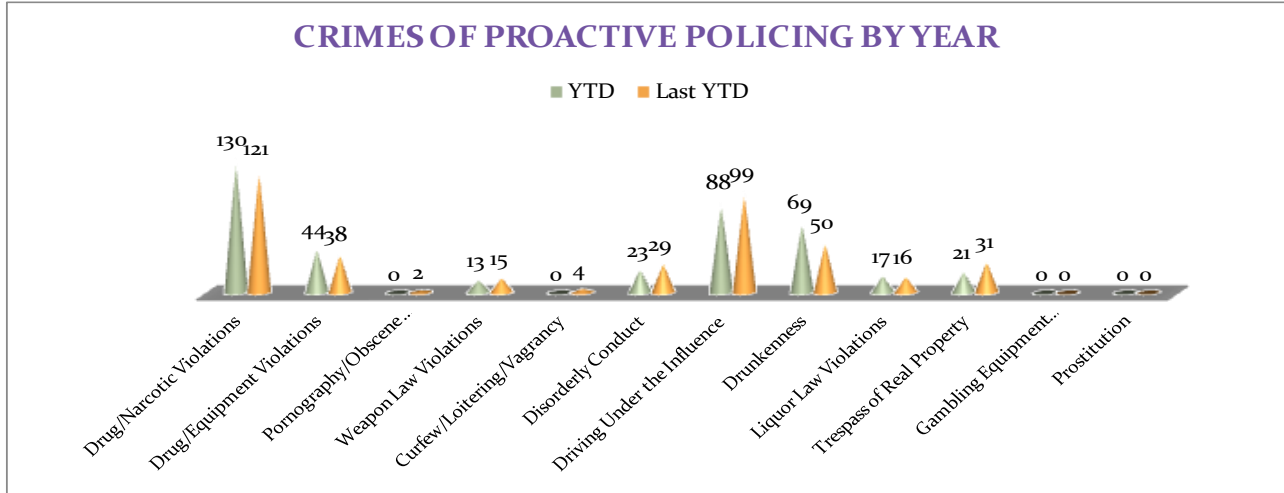


## MONTHLY REPORT FEBRUARY 2013

8 March 2013

To date for the year 2013, there have been 405 crimes of proactive policing reported, no change when comparing to the last year's to date data. Drug/ Narcotic Violations are up 7%, Drug / Equipment Violations are up 16%,

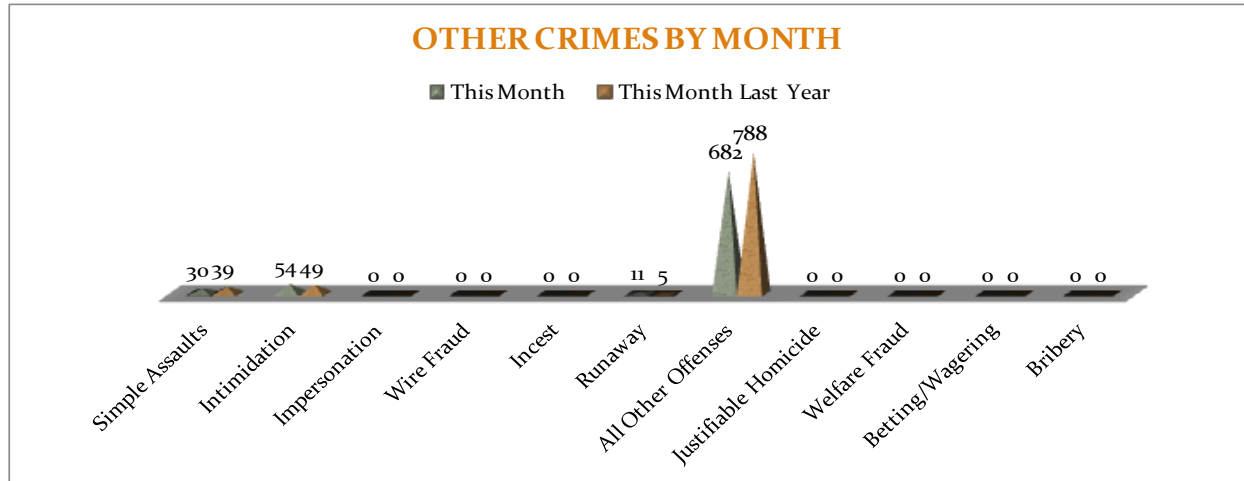
and Drunkenness is up 38%. Trespass of Real Property is 32% down this year. Prostitution is down 100%. There are no other statistically significant changes noted for other offenses in this category.



### OTHER CRIMES

There are 11 crimes that fall into the Other Crimes category. This month, there have been a total of 777 Other Crimes reported, a 12% decrease, comparing to February of the last year (n = 881). Simple Assaults

decreased by 23% and All other Offences decreased by 13%. There were 6 more Runaway offenses reported this month, 120% up. No other significant changes are noted in this category of crimes this month.

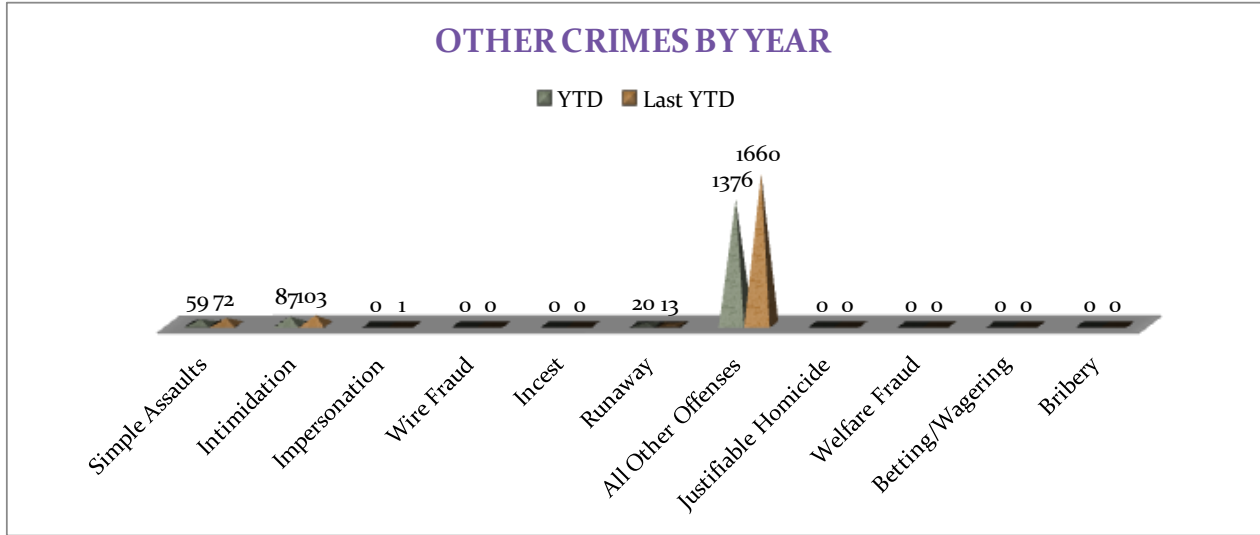


# MONTHLY REPORT FEBRUARY 2013

8 March 2013

To date this year, there have been 1542 Other Crimes offenses, a 17% decrease comparing to the last year's to date data. Intimidation offenses are down 18%, Simple Assaults decreased by 18%, and All Other Offenses

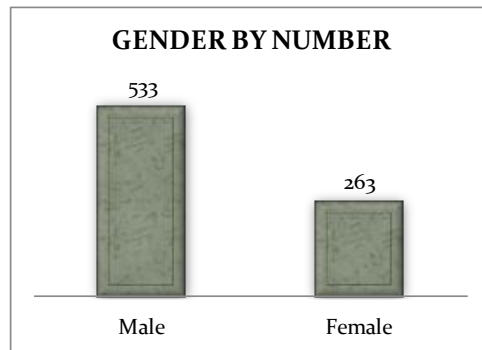
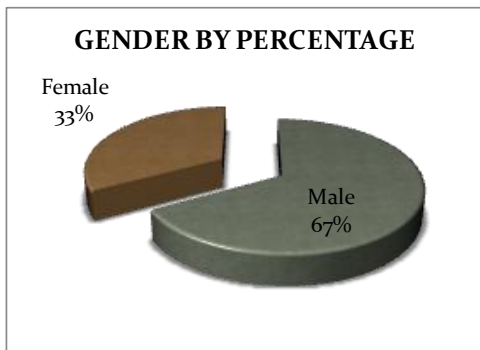
decreased by 17%. No other statistically significant changes have been observed for other offenses within this category, comparing to the last year's data.



## ARREST DEMOGRAPHICS

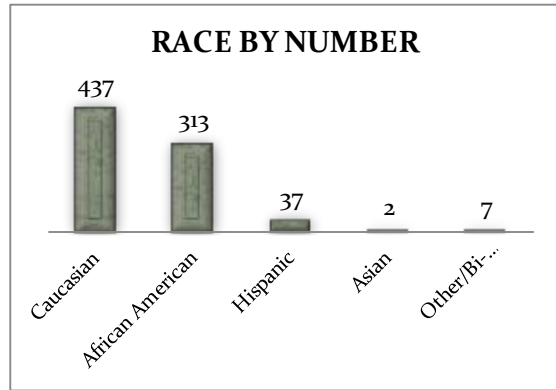
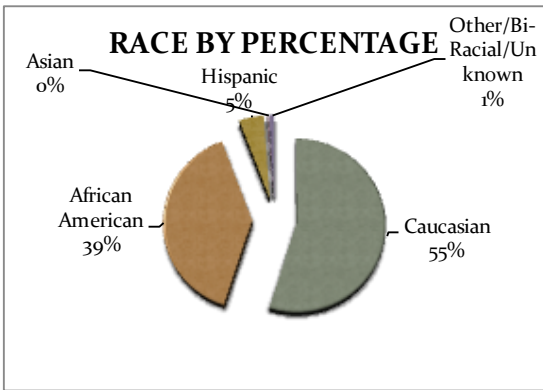
In February 2013, there were a total of 796 arrests carried out by the Jonesboro Police Department. Comparing with the last year's data for the month of February, there was a 7% decrease in arrests this month. Yet, that is 60 arrests per 100 crimes in February of this year, comparing to 55 arrests per 100 crimes last year, an 8% increase for arrests per 100 crimes. This section breaks down

this month's arrests by race and gender. The majority of arrestees, 67%, have been male ( $n = 533$ ), as opposed to female ( $n = 263$ ). Ethnic wise, the majority of arrestees have been Caucasian ( $n = 437$ ) and African American ( $n = 313$ ) as opposed to Hispanic ( $n = 37$ ), Asian ( $n = 2$ ), or other/unknown/bi-racial ( $n = 7$ ).



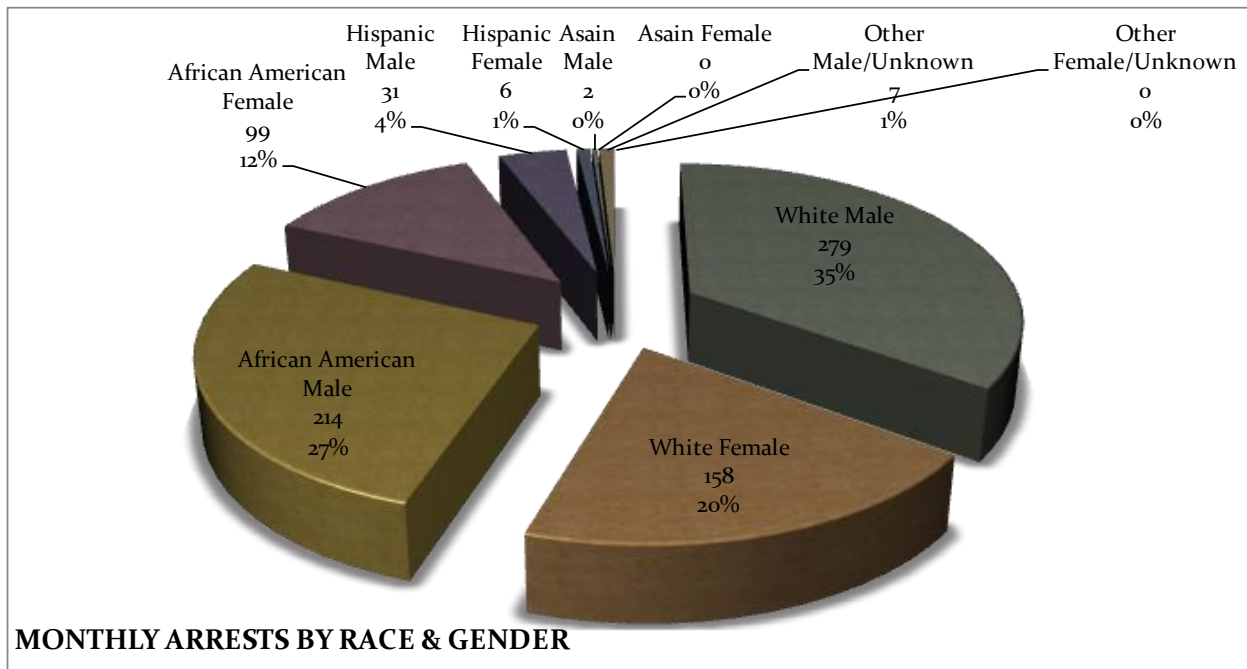
MONTHLY REPORT FEBRUARY 2013

8 March 2013



Caucasian males make up the majority, 35%, of arrestees this month ( $n = 279$ ). African American males make up 27% of arrestees for the month of February ( $n = 214$ ). Caucasian females make up 20% ( $n = 158$ ) and African American females make up 12% ( $n = 99$ ) of arrestees this month. Hispanic

males make up 4% ( $n = 31$ ), and Hispanic Females make up 1% ( $n = 6$ ) of arrestees this month. There were 2 Asian males and 7 Males of unknown race or ethnicity (1%) arrested in February.



**EMERGENCY 911**

Also known as Public Safety Answering Point (PSAP), the Emergency 911 Division is responsible for answering all calls from public for emergency assistance, accessing

the needed information to best assist, and then assigning the most efficient and effective emergency response. In addition, this division is responsible for setting



## MONTHLY REPORT FEBRUARY 2013

8 March 2013

priority call dispatching to field units including Police, Fire, and EMS. Emergency 911 also maintains all records for radio logs,

calls for service, and other emergency service data collections.

Calls by Type	This Month	This Month Last Year	YTD	Last YTD	Change By Month	Change YTD
Land Line E911	703	762	1,435	1,494	-8%	-4%
Cell Phone E911	4,000	3,711	7,781	7,798	8%	0%
Admin Lines-non emer	13,482	14,506	28,002	30,122	-7%	-7%
<b>TOTALS</b>	<b>18,185</b>	<b>18,979</b>	<b>37,218</b>	<b>39,414</b>	<b>-4%</b>	<b>-6%</b>

Calls by Agency	This Month	This Month Last Year	YTD	Last YTD	Change By Month	Change YTD
Jonesboro PD Calls	5,923	6,636	13,065	13,993	-11%	-7%
Craighead Cty Sheriff	1,064	1,098	2,411	2,685	-3%	-10%
Jonesboro Fire Dpt - dispatch	204	168	411	359	21%	14%
Jonesboro Fire Dpt - Med Asst	109	111	262	209	-2%	25%
Craighead Cty - Fire	31	63	69	115	-51%	-40%
Craighead Cty - 1st Responder	104	105	212	208	-1%	2%
Emerson Ambulance	298	270	615	535	10%	15%
Medic One	280	276	569	556	1%	2%
Air Evac	1	0	1	0	N/C	N/C
Coroner	3	5	10	7	-40%	43%
ARK State Police	10	15	18	28	-33%	-36%
Jonesboro Animal Control	2	3	5	3	-33%	67%
Wreckers Called	178	141	382	314	26%	22%
<b>TOTALS</b>	<b>8,207</b>	<b>8,891</b>	<b>18,030</b>	<b>19,012</b>	<b>-8%</b>	<b>-5%</b>

Calls by Municipality	This Month	This Month Last Year	YTD	Last YTD	Change By Month	Change YTD
Bay PD	114	126	218	245	-10%	-11%
Bono PD	246	246	528	504	0%	5%
Brookland PD	98	219	202	403	-55%	-50%
Caraway PD	67	162	157	339	-59%	-54%
Cash PD	0	24	4	47	-100%	-91%
Egypt PD	0	8	4	13	-100%	-69%
Lake City PD	119	153	212	317	-22%	-33%
Monette PD	89	157	176	354	-43%	-50%
<b>TOTALS</b>	<b>733</b>	<b>1,095</b>	<b>1,501</b>	<b>2,222</b>	<b>-33%</b>	<b>-32%</b>

### UNIFORM PATROL DIVISION

The UPD is responsible for responding to calls into the Emergency – 911 Division by civilians and are normally the first responders. Jonesboro is divided into 6 patrol districts. Officers from UPD are

assigned to a district and work the same district every shift. In addition, when a Traffic Officer is not available, a UPD Officer will respond to traffic accidents and assist in directing traffic when necessary.

## MONTHLY REPORT FEBRUARY 2013

8 March 2013

Incidents	This Month	This Month Last Year	YTD	Last YTD	Change By Month	Change YTD
Calls For Service	6,640	5,692	14,616	11,370	17%	29%
Complaints	3,613	2,771	7,255	6,447	30%	13%
Assists	1,071	1,540	2,251	3,196	-30%	-30%
Incident Reports	790	806	1,608	1,638	-2%	-2%
Street Accidents	60	86	115	154	-30%	-25%
Private Property Accidents	45	39	82	77	15%	6%
Traffic Stops	2,417	2,420	4,622	4,107	0%	13%
Traffic Citations	671	722	1,365	1,453	-7%	-6%
Written Warnings	960	692	1,845	1,370	39%	35%
DWI	36	26	85	50	38%	70%
Mis. Arrests	452	476	958	1,135	-5%	-16%
Felony Arrests	88	55	171	207	60%	-17%
Warrants Served	1,428	1,392	2,744	2,626	3%	4%
Alarms	285	376	652	585	-24%	11%
<b>TOTALS</b>	<b>18,556</b>	<b>17,093</b>	<b>38,369</b>	<b>34,415</b>	<b>9%</b>	<b>11%</b>
Hours Worked	8,672	11,002	18,053	21,973	-21%	-18%

### PROWL

The Prowl unit is a uniformed street crimes unit specializing in criminal patrol, narcotics enforcement, gang investigation, and prostitution activity. The unit conducts directed patrols, investigates citizen

complaints of street-level criminal activity, and directly assists the 2<sup>nd</sup> Judicial Drug Task Force. PROWL also assists any division within the Jonesboro Police Department at any time when needed.

Incidents	This Month	This Month Last Year	YTD	Last YTD	Change By Month	Change YTD
Street Accidents	0	0	0	0	N/C	N/C
Private Property Accidents	0	0	0	0	N/C	N/C
Traffic Citations	9	44	24	64	-80%	-63%
DWI	0	0	0	0	N/C	N/C
Mis. Arrests	38	144	184	207	-74%	-11%
Felony Arrests	31	15	44	43	107%	2%
Drug Arrests	27	20	63	49	35%	29%
Public Intoxication Arrests	0	0	0	2	N/C	-100%
Calls For Service	53	88	91	121	-40%	-25%
Alarms	0	0	0	0	N/C	N/C
Parking Citations	0	0	0	0	N/C	N/C
Written Warnings	41	62	83	95	-34%	-13%
Assists	0	0	0	0	N/C	N/C
<b>TOTALS</b>	<b>199</b>	<b>373</b>	<b>489</b>	<b>581</b>	<b>-47%</b>	<b>-16%</b>
Value of Drugs Seized	\$ 29,900	\$ 4,650	\$ 30,230	\$ 11,650	543%	159%
Value of Asstes Seized	\$ 1,121	\$ 7,950	\$ 1,321	\$ 15,350	-86%	-91%
Patrol Miles	6,450	6,550	14,300	11,150	-2%	28%

### CRIMINAL INVESTIGATIVE DIVISION

The CID is responsible for conducting follow-up investigations into criminal acts reported to the Jonesboro Police

Department. The primary goal is to collect and present evidence that conclusively leads to a successful arrest. Additionally, CID is

**MONTHLY REPORT FEBRUARY 2013**

**8 March 2013**

charged with clearing additional crimes, recovering stolen property, preventing

additional crimes, and gathering intelligence information.

<b>Investigations</b>	<b>This Month</b>	<b>This Month Last Year</b>	<b>YTD</b>	<b>Last YTD</b>	<b>Change By Month</b>	<b>Change YTD</b>
Criminal Investigations Assigned	129	64	206	140	102%	47%
Criminal Investigations Closed	63	52	140	100	21%	40%
Cleared by Arrests	39	37	83	69	5%	20%
Unfounded	8	3	15	9	167%	67%
Exceptionally Cleared	12	6	26	10	100%	160%
Filed With Prosecutors Office	2	4	9	8	-50%	13%
<b>TOTALS</b>	<b>253</b>	<b>166</b>	<b>479</b>	<b>336</b>	<b>52%</b>	<b>43%</b>
<b>Crimes Against Persons</b>	<b>This Month</b>	<b>This Month Last Year</b>	<b>YTD</b>	<b>Last YTD</b>	<b>Change By Month</b>	<b>Change YTD</b>
Criminal Investigations Assigned	29	14	41	27	107%	52%
Criminal Investigations Closed	21	14	44	26	50%	69%
Cleared by Arrests	15	12	30	20	25%	50%
Unfounded	3	0	6	2	N/C	200%
Exceptionally Cleared	3	0	6	1	N/C	500%
Filed With Prosecutors Office	0	2	2	4	-100%	-50%
<b>TOTALS</b>	<b>71</b>	<b>42</b>	<b>129</b>	<b>80</b>	<b>69%</b>	<b>61%</b>
<b>Property Crimes</b>	<b>This Month</b>	<b>This Month Last Year</b>	<b>YTD</b>	<b>Last YTD</b>	<b>Change By Month</b>	<b>Change YTD</b>
Criminal Investigations Assigned	86	43	146	102	100%	43%
Criminal Investigations Closed	35	34	75	64	3%	17%
Cleared by Arrests	22	23	48	47	-4%	2%
Unfounded	4	3	6	6	33%	0%
Exceptionally Cleared	7	6	16	8	17%	100%
Filed With Prosecutors Office	2	2	5	3	0%	67%
<b>TOTALS</b>	<b>156</b>	<b>111</b>	<b>296</b>	<b>230</b>	<b>41%</b>	<b>29%</b>
<b>Crimes Against Children</b>	<b>This Month</b>	<b>This Month Last Year</b>	<b>YTD</b>	<b>Last YTD</b>	<b>Change By Month</b>	<b>Change YTD</b>
Criminal Investigations Assigned	11	4	14	5	175%	180%
Criminal Investigations Closed	5	2	14	6	150%	133%
Cleared by Arrests	2	2	5	2	0%	150%
Unfounded	2	0	4	1	N/C	300%
Exceptionally Cleared	1	0	3	1	N/C	200%
Filed With Prosecutors Office	0	0	2	2	N/C	0%
<b>TOTALS</b>	<b>21</b>	<b>8</b>	<b>42</b>	<b>17</b>	<b>163%</b>	<b>147%</b>
Miscellaneous Investigations Assigned	3	3	5	4	0%	25%
Miscellaneous Investigations Cleared	2	2	2	2	0%	0%
<b>FINGERPRINTS</b>	<b>This Month</b>	<b>This Month Last Year</b>	<b>YTD</b>	<b>Last YTD</b>	<b>Change By Month</b>	<b>Change YTD</b>
<b>Rolled for the Public</b>	<b>210</b>	<b>136</b>	<b>n/a</b>	<b>n/a</b>	<b>n/a</b>	<b>n/a</b>

**WARRANTS**

The Warrants Division is responsible for serving warrants, criminal summonses, and subpoenas that are issued by the District Court. On city court days, the Warrants Division provides a bailiff for court and a transport officer. In addition, this Division is

responsible for transporting wanted persons arrested in other jurisdictions back to Jonesboro. The STEP program operates within this division and is a grant-funded operation in which officers can get paid overtime to enforce the safety belt law.

<b>Arrests</b>	<b>This Month</b>	<b>This Month Last Year</b>	<b>YTD</b>	<b>Last YTD</b>	<b>Change By Month</b>	<b>Change YTD</b>
Misdemeanor	974	1069	1753	2689	-9%	-35%
Felony	0	0	0	0	N/C	N/C
<b>Total Arrests</b>	<b>974</b>	<b>1069</b>	<b>1753</b>	<b>2689</b>	<b>-9%</b>	<b>-35%</b>

## MONTHLY REPORT FEBRUARY 2013

8 March 2013

<b>Warrants by Activity</b>	<b>This Month</b>	<b>This Month Last Year</b>	<b>YTD</b>	<b>Last YTD</b>	<b>Change By Month</b>	<b>Change YTD</b>
Subpoenas	663	330	1458	882	101%	65%
Commitments	2	4	5	5	-50%	0%
Traffic Citations	0	3	0	11	-100%	-100%
Complaints	1	0	2	1	N/C	100%
Assist	2	0	2	0	N/C	N/C
Alarms	0	0	0	0	N/C	N/C
<b>Hours by Activity</b>	<b>This Month</b>	<b>This Month Last Year</b>	<b>YTD</b>	<b>Last YTD</b>	<b>Change By Month</b>	<b>Change YTD</b>
SI Criminal	184.5	185	456.33	483	0%	-6%
Court	106.67	98.5	241.84	204.33	8%	18%
Prisoner Transport	20.67	20.5	66.67	40	1%	67%
<b>Hours Worked</b>	<b>This Month</b>	<b>This Month Last Year</b>	<b>YTD</b>	<b>Last YTD</b>	<b>Change By Month</b>	<b>Change YTD</b>
Regular Hours Worked	538	545	1246	1219.5	-1%	2%
Overtime Hours Worked	1.5	6	8.5	11.5	-75%	-26%
<b>TOTAL Hours Worked</b>	<b>539.5</b>	<b>551</b>	<b>1254.5</b>	<b>1231</b>	<b>-2%</b>	<b>2%</b>
<b>Mileage</b>	<b>This Month</b>	<b>This Month Last Year</b>	<b>YTD</b>	<b>Last YTD</b>	<b>Change By Month</b>	<b>Change YTD</b>
<b>Total Mileage</b>	<b>2712</b>	<b>2065</b>	<b>6444</b>	<b>4834</b>	<b>31%</b>	<b>33%</b>
<b>STEP</b>	<b>This Month</b>	<b>This Month Last Year</b>	<b>YTD</b>	<b>Last YTD</b>	<b>Change By Month</b>	<b>Change YTD</b>
DWI Arrest	0	1	0	3	-100%	-100%
DUI Arrest	0	0	0	0	N/C	N/C
Traffic Citations	46	180	95	515	-74%	-82%
Felony Arrests	1	0	1	0	N/C	N/C
Drug Arrests	0	0	0	0	N/C	N/C
<b>STEP TOTALS</b>	<b>47</b>	<b>181</b>	<b>96</b>	<b>518</b>	<b>-74%</b>	<b>-81%</b>
<b>STEP Hours Worked</b>	<b>63</b>	<b>146</b>	<b>119</b>	<b>365</b>	<b>-57%</b>	<b>-67%</b>
<b>STEP Miles Driven</b>	<b>429</b>	<b>989</b>	<b>722</b>	<b>2503</b>	<b>-57%</b>	<b>-71%</b>

### DRUG TASK FORCE

The DTF is responsible for investigating major drug traffickers in the area, including all types of illegal drugs.

The DTF works closely with local, state, and federal agencies to eradicate drugs from the community.

<b>INVESTIGATIONS</b>	<b>This Month</b>	<b>This Month Last Year</b>	<b>YTD</b>	<b>Last YTD</b>	<b>Change By Month</b>	<b>Change YTD</b>
Opened	14	26	35	47	-46%	-26%
Closed	14	18	21	36	-22%	-42%
<b>TOTAL</b>	<b>28</b>	<b>44</b>	<b>56</b>	<b>83</b>	<b>-36%</b>	<b>-33%</b>
<b>With Nexus to Jonesboro</b>	<b>This Month</b>	<b>This Month Last Year</b>	<b>YTD</b>	<b>Last YTD</b>	<b>Change By Month</b>	<b>Change YTD</b>
Opened	14	25	37	46	-44%	-20%
Closed	0	0	0	0	N/C	N/C
<b>TOTAL</b>	<b>14</b>	<b>25</b>	<b>37</b>	<b>46</b>	<b>-44%</b>	<b>-20%</b>
<b>Outside Jonesboro (No Known Nexus)</b>	<b>This Month</b>	<b>This Month Last Year</b>	<b>YTD</b>	<b>Last YTD</b>	<b>Change By Month</b>	<b>Change YTD</b>
Opened	0	1	0	1	1300%	-100%
Closed	0	0	0	0	0%	N/C
<b>TOTAL</b>	<b>0</b>	<b>1</b>	<b>0</b>	<b>1</b>	<b>-100%</b>	<b>-100%</b>
<b>ASSISTANCE RENDERED</b>	<b>This Month</b>	<b>This Month Last Year</b>	<b>YTD</b>	<b>Last YTD</b>	<b>Change By Month</b>	<b>Change YTD</b>
Assist to Outside Agencies	0	5	0	6	-100%	-100%
Assist to Jonesboro UPD/CID	3	10	8	25	-70%	-68%

**MONTHLY REPORT FEBRUARY 2013**

**8 March 2013**

<b>ARRESTS</b>	<b>This Month</b>	<b>This Month Last Year</b>	<b>YTD</b>	<b>Last YTD</b>	<b>Change By Month</b>	<b>Change YTD</b>
Miscellaneous	5	12	11	22	-58%	-50%
Felony	15	26	45	46	-42%	-2%
Marijuana	2	3	8	5	-33%	60%
Cocaine	0	2	2	4	-100%	-50%
Crack Cocaine	0	0	2	4	N/C	-50%
Methamphetamine/ICE	8	13	18	18	-38%	0%
LSD	0	0	0	0	N/C	N/C
Extasy (MDMA or Other Designer Drug)	0	0	0	0	N/C	N/C
Prescription	3	1	5	3	200%	67%
Opiates (Heroin, Opium)	0	0	0	0	N/C	N/C
Labs	0	3	0	2	-100%	-100%
All Other Drug Offenses	3	0	14	0	N/C	N/C
<b>ASSET FORFEITURE</b>	<b>This Month</b>	<b>This Month Last Year</b>	<b>YTD</b>	<b>Last YTD</b>	<b>Change By Month</b>	<b>Change YTD</b>
Vehicles Seized (No.)	0	0	0	0	N/C	N/C
Value of Assets Seized (Includes Value of vehicles)	\$0	\$2,400	\$0	\$2,400	-100%	-100%
Asset Value Awarded to Jonesboro PD (State)	\$0	\$0	\$0	\$0	N/C	N/C
Asset Value Awarded to Jonesboro PD (Federal)	\$0	\$0	\$0	\$0	N/C	N/C
Asset Value Awarded to Jonesboro PD (Total)	\$0	\$0	\$0	\$0	N/C	N/C
<b>ARRESTS DEMOGRAPHICS</b>	<b>This Month</b>	<b>This Month Last Year</b>	<b>YTD</b>	<b>Last YTD</b>	<b>Change By Month</b>	<b>Change YTD</b>
White	7	10	20	19	-30%	5%
African American	3	4	11	10	-25%	10%
Latino	2	6	2	9	-67%	-78%
Asian	0	0	0	0	N/C	N/C
Other/Bi-Racial	0	0	0	0	N/C	N/C
Male	8	18	25	26	-56%	-4%
Female	4	4	9	10	0%	-10%
White Male	3	7	14	13	-57%	8%
White Female	4	3	6	6	33%	0%
African American Male	3	4	9	7	-25%	29%
African American Female	0	2	2	4	-100%	-50%
Latino Male	1	6	1	7	-83%	-86%
Latino Female	0	0	0	0	N/C	N/C
Asian Male	0	0	0	0	N/C	N/C
Asian Female	0	0	0	0	N/C	N/C
Other/Bi-Racial Male	0	0	0	0	N/C	N/C
Other/Bi-Racial Female	0	0	0	0	N/C	N/C

**TRAFFIC**

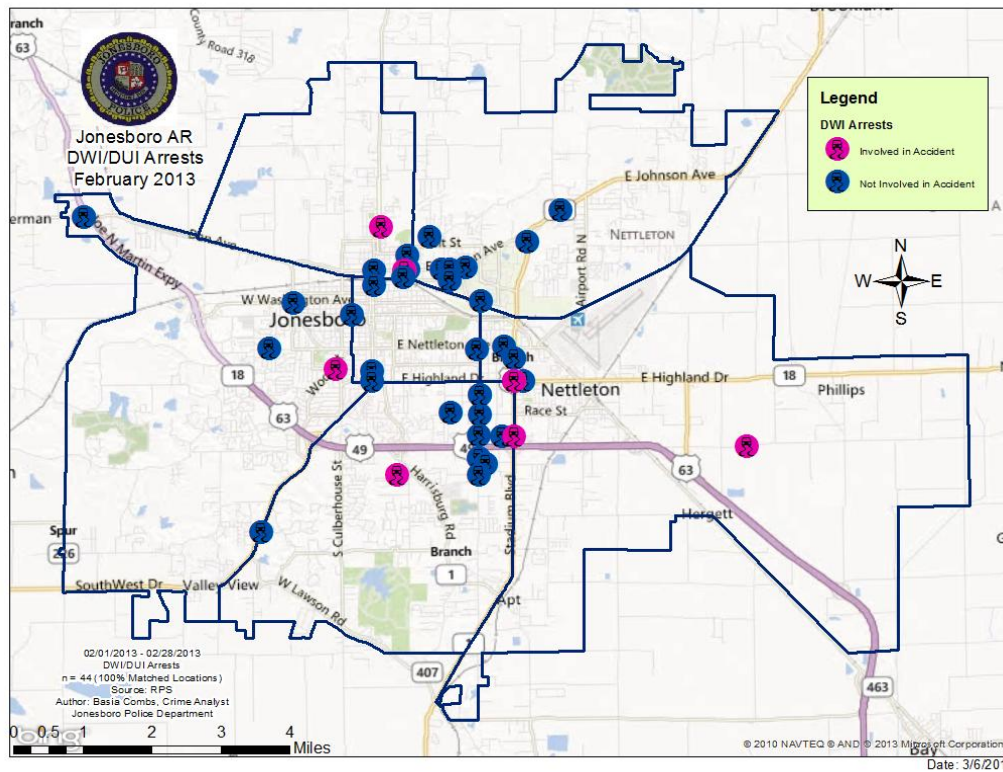
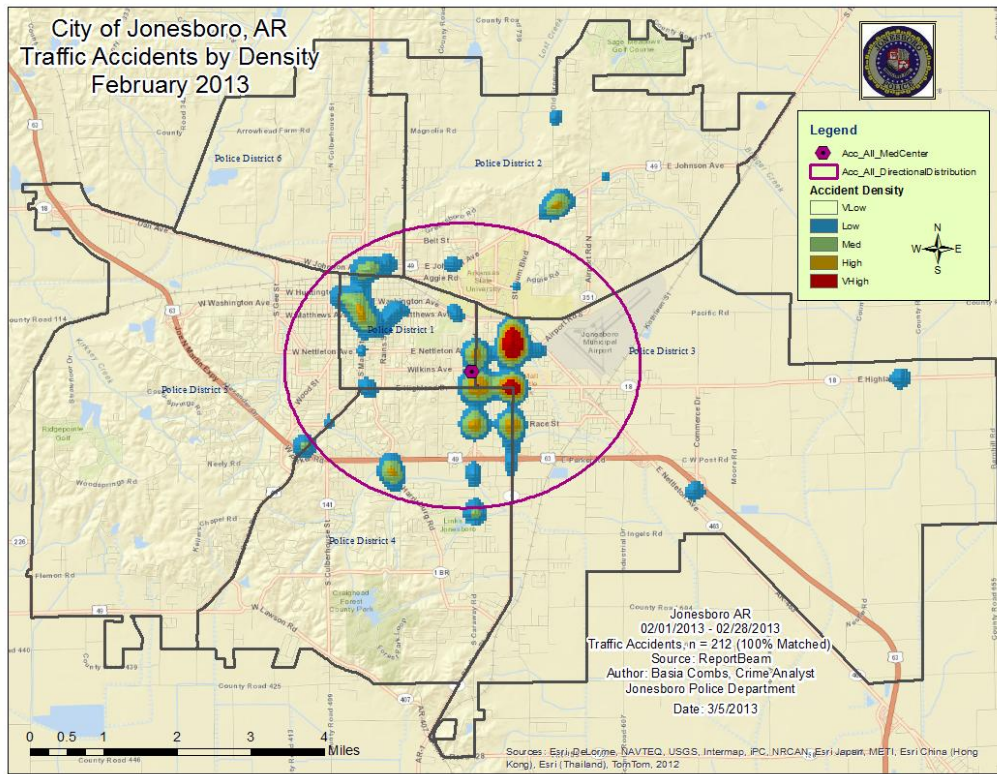
Comprised of three motor units and three Chargers, the Traffic Enforcement Unit responds to traffic accidents and provides increased enforcement in particularly challenging areas. This unit also provides

extra coverage for specific congestion problems and special events in the community. Last, they work details targeting specific issues, such as DWI enforcement and traffic safety checkpoints.

<b>Incidents</b>	<b>This Month</b>	<b>This Month Last Year</b>	<b>YTD</b>	<b>Last YTD</b>	<b>Change By Month</b>	<b>Change YTD</b>
Street Accidents	157	152	293	275	3%	7%
Private Property Accidents	30	38	62	79	-21%	-22%
Traffic Citations	92	152	196	268	-39%	-27%
DWI	0	3	1	4	-100%	-75%
Mis. Arrests	0	5	5	20	-100%	-75%
Felony Arrests	1	0	2	0	N/C	N/C
Drug Arrests	0	0	0	0	N/C	N/C
Public Intoxication Arrests	0	0	0	0	N/C	N/C
Calls For Service	155	243	400	456	-36%	-12%
Alarms	0	0	0	0	N/C	N/C
Parking Citations	0	0	0	0	N/C	N/C
Written Warnings	99	137	172	200	-28%	-14%
<b>TOTALS</b>	<b>534</b>	<b>730</b>	<b>1131</b>	<b>1302</b>	<b>-27%</b>	<b>-13%</b>
Value of Asstes Seized	\$0	\$0	\$0	\$0	N/C	N/C
Patrol Miles	3,415	6,076	7,015	6,076	-44%	15%
Hours Worked	731	913.5	1627	1830.5	-20%	-11%

# MONTHLY REPORT FEBRUARY 2013

8 March 2013



# MONTHLY REPORT FEBRUARY 2013

8 March 2013

## ANIMAL CONTROL

The Animal Control Division is responsible for educating the public on safe and humane issues regarding animal treatment, enforcing all animal laws and ordinances, assisting the

public in resolving animal issues, and protecting the safety and welfare of the citizens and animals in this community.

Incidents	This Month	This Month Last Year	YTD	Last YTD	Change By Month	Change YTD
Barking Complaints	9	11	16	12	-18%	33%
Bite Reports	2	3	6	9	-33%	-33%
Door Hangers	40	58	102	114	-31%	-11%
Welfare Checks	41	115	78	230	-64%	-66%
Advised of Rights	948	851	1959	1663	11%	18%
Incident Reports	2	2	3	9	0%	-67%
Gone on Arrival	35	44	81	94	-20%	-14%
Complaints	845	716	1587	1354	18%	17%
Desk Complaints	1275	1236	2603	2621	3%	-1%
Captured Dogs	108	160	265	340	-33%	-22%
Captured Cats	7	3	15	6	133%	150%
Captured Wildlife	22	7	27	19	214%	42%
Chemical Captures	1	2	2	6	-50%	-67%
Traps	30	5	41	9	500%	356%
Deceased Animals	49	79	99	174	-38%	-43%
Assist J.P.D.	2	2	8	4	0%	100%
Assist C.S.O.	2	0	2	0	N/C	N/C
Public Relations	358	435	700	889	-18%	-21%
Incidents	This Month	This Month Last Year	YTD	Last YTD	Change By Month	Change YTD
CITATIONS ISSUED	39	68	69	151	-43%	-54%
WARNINGS ISSUED	75	27	198	72	178%	175%
Physical Arrests	4	0	9	0	N/C	N/C
City Warrants Served	11	2	26	8	450%	225%
County Warrants Served	2	0	2	0	N/C	N/C
Felony Bench Warrants	0	0	1	0	N/C	N/C
Euthanized	56	65	146	134	-14%	9%
Deceased Animals Landfill lbs.	2300	3200	6080	7400	-28%	-18%
Wildlife Euthanized	22	7	27	19	214%	42%
Sent to Rescue Centers	0	6	0	21	-100%	-100%
Adoptions	28	42	68	93	-33%	-27%
Miles Driven	8,177	7045	15,550	12,617	16%	23%

## FLEET MAINTNANCE

The Fleet Maintenance is responsible for all of the police vehicle maintenance upkeep, cleanliness, and purchasing. In addition, this

Division handles most of the purchasing of equipment, supplies, and uniforms for all of the Police Department.

Repair Costs by Model Year	This Month	This Month Last Year	YTD	Last YTD	Change By Month	Change YTD
95-99	\$0.00	\$0.00	\$0.00	\$0.00	N/C	N/C
2000	\$0.00	\$0.00	\$0.00	\$0.00	N/C	N/C
2001	\$0.00	\$0.00	\$0.00	\$300.46	N/C	-100%
2002	\$0.00	\$0.00	\$0.00	\$0.00	N/C	N/C
2003	\$0.00	\$0.00	\$0.00	\$0.00	N/C	N/C
2004	\$0.00	\$845.05	\$0.00	\$1,143.07	-100%	-100%
2005	\$0.00	\$481.93	\$0.00	\$556.46	-100%	-100%
2006	\$259.19	\$1,079.04	\$1,414.24	\$3,269.18	-76%	-57%
2007	\$3,489.34	\$620.66	\$4,368.58	\$2,208.21	462%	98%
2008	\$1,162.33	\$407.97	\$1,251.95	\$407.97	185%	207%
2009	\$76.01	\$127.62	\$790.30	\$139.23	N/C	N/C
2010	\$0.00	\$0.00	\$430.96	\$0.00	N/C	N/C
2011	\$298.73	\$252.48	\$333.56	\$469.69	N/C	N/C
2012	\$0.00	n/a	\$0.00	n/a	N/C	N/C
2013	\$0.00	\$0.00	\$0.00	\$0.00	N/C	N/C
<b>Totals</b>	<b>\$5,285.60</b>	<b>\$3,814.75</b>	<b>\$8,589.59</b>	<b>\$8,494.27</b>	<b>39%</b>	<b>1%</b>

## MONTHLY REPORT FEBRUARY 2013

8 March 2013

Routine Preventative Maintenance by Model Year	This Month	This Month Last Year	YTD	Last YTD	Change By Month	Change YTD
95-99	\$0.00	\$0.00	\$0.00	\$0.00	N/C	N/C
2000	\$0.00	\$0.00	\$20.00	\$0.00	N/C	N/C
2001	\$0.00	\$0.00	\$0.00	\$0.00	N/C	N/C
2002	\$0.00	\$0.00	\$0.00	\$20.00	N/C	-100%
2003	\$51.40	\$0.00	\$242.59	\$92.00	N/C	164%
2004	\$455.89	\$40.00	\$495.89	\$129.00	1040%	284%
2005	\$25.35	\$121.00	\$507.74	\$298.35	-79%	70%
2006	\$1,021.49	\$1,216.24	\$3,108.26	\$3,990.88	-16%	-22%
2007	\$300.87	\$1,782.16	\$1,724.85	\$3,953.25	-83%	-56%
2008	\$942.87	\$94.20	\$1,153.13	\$1,352.54	901%	-15%
2009	\$351.10	\$1,226.81	\$557.60	\$1,098.75	N/C	N/C
2010	\$0.00	\$371.95	\$210.00	\$466.95	N/C	N/C
2011	\$1,023.37	\$0.00	\$2,900.74	\$232.00	N/C	N/C
2012	\$0.00	n/a	\$20.00	n/a	N/C	N/C
2013	\$569.62		\$569.62		N/C	N/C
<b>Totals</b>	<b>\$4,172.34</b>	<b>\$4,852.36</b>	<b>\$10,940.80</b>	<b>\$12,533.72</b>	<b>-14%</b>	<b>-13%</b>

## RECORDS

The Records Division is responsible for providing administrative and clerical support to the department. Major responsibilities include entering the accident and incident reports and tickets into the records database management system, assisting the general

public for report requests, performing criminal backgrounds, serving as a switchboard at times, performing validations, and setting up and managing the payment plans out of court.

RECORDS	This Month	This Month Last Year	YTD	Last YTD	Change By Month	Change YTD
Incident/Arrest Reports Processed	1151	1204	2340	2550	-4%	-8%
Accident Reports Processed	212	204	404	384	4%	5%
Citations Processed	2981	3951	6316	8497	-25%	-26%
Warnings Processed	811	989	1760	1750	-18%	1%
Backgrounds	17	18	44	35	-6%	26%
Fingerprints	210	136	403	233	54%	73%
Photos	1	0	3	0	N/C	N/C
Accident Requests	124	168	263	296	-26%	-11%
Accident Requests Online	141	92	277	176	53%	57%
<b>TOTALS</b>	<b>5,648</b>	<b>6,762</b>	<b>11,810</b>	<b>13,921</b>	<b>-16%</b>	<b>-15%</b>

## PROFESSIONAL STANDARDS

The Office of Professional Standards, a unit within Administration, is charged with the compilation and updating of an extensive set of policies and procedures and providing a general operations guideline and code of conduct for officers to follow. In the event

that a member of the public does experience a negative interaction with an officer, mechanisms are in place for them to lodge a complaint. All complaints are reviewed and investigations completed in a timely manner.



## MONTHLY REPORT FEBRUARY 2013

8 March 2013

Professional Standards	This Month	This Month Last Year	YTD	Last YTD	Change By Month	Change YTD
Opened (TOTAL)	4	2	6	10	100%	-40%
Closed	4	2	5	10	100%	-50%
Inquiries	4	2	5	9	100%	-44%
Formal Investigations	0	0	1	1	N/C	0%
Sustained	2	2	4	9	0%	-56%
Not-Sustained	0	0	0	0	N/C	N/C
Exonerated	0	0	0	1	N/C	-100%
Unfounded	2	0	2	0	N/C	N/C

END OF REPORT



### Contact Information

Basia Combs, MPA, CCIA | Crime Analyst | Office of Crime Analysis & Criminal Intelligence  
Jonesboro Police Department | 410 W Washington Ave | Jonesboro, AR 72401  
Ph: 870-336-7196 | E-mail: [bcombs@jonesboro.org](mailto:bcombs@jonesboro.org) | [www.jonesboropolice.com](http://www.jonesboropolice.com)