

JONESBORO POLICE DEPARTMENT

Monthly Report

May 2012

Office of Crime Analysis & Criminal Intelligence
410 W Washington Ave
Jonesboro, AR 72401
Basia Combs, Crime Analyst

IN THIS REPORT

CRIME ANALYSIS	1
Total Crime	2
Crimes against Person	3
Property Crimes	4
Crimes of Proactive Policing	5
Other Crimes.....	6
Arrest Demographics	7
EMERGENCY 911	9
UPD	10
_PROWL	10
CID	11
WARRANTS	12
DRUG TASK FORCE	13
TRAFFIC	14
Maps	15
PARKING	
ENFORCEMENT	16
ANIMAL CONTROL	17
FLEET MAINTENANCE	17
RECORDS	18
PROFESSIONAL	
STANDARDS	19

The purpose of the Jonesboro Police Department Monthly Report is to compile data into one integrated report for review, allowing for a seamless flow of information for better decision-making. After each department collates their monthly numbers and sends it to the Office of Crime Analysis, it is organized into sections of departmental data, analyzed and packaged, and finally disseminated to department heads, the Chief of Police, the City Mayor, and the City Council. Major sections include Crime Analysis, Emergency 911, Uniform Police Division, Prowl, Criminal Investigative Division, Warrants, Drug Task Force, Traffic, Parking Enforcement, Animal Control, Fleet Maintenance, Records, and Professional Standards.

CRIME ANALYSIS

The Crime Analysis division consists of one Crime Analyst and one part-time Crime Analyst Assistant. The Crime Analyst position is responsible for the analysis and dissemination of crime activity data and the collection and maintenance of crime intelligence information for the city of Jonesboro. Additionally, the Crime Analyst is charged with providing the department with current and accurate crime maps, presenting crime activity data to audiences of interest, and responding to requests for crime data from civilians and departmental staff. Data exported from this division is used by field agents for more effective, efficient policing, administration for improved staffing decisions, and the Mayor's office for community decision making and enhanced public relations. The following section is broken down into Total Crime, Crimes against Persons, Property Crimes, Crimes of Proactive Policing, Other Crimes, Arrest Demographics, Total Crime Monthly Comparison, and Next Month Predictions.

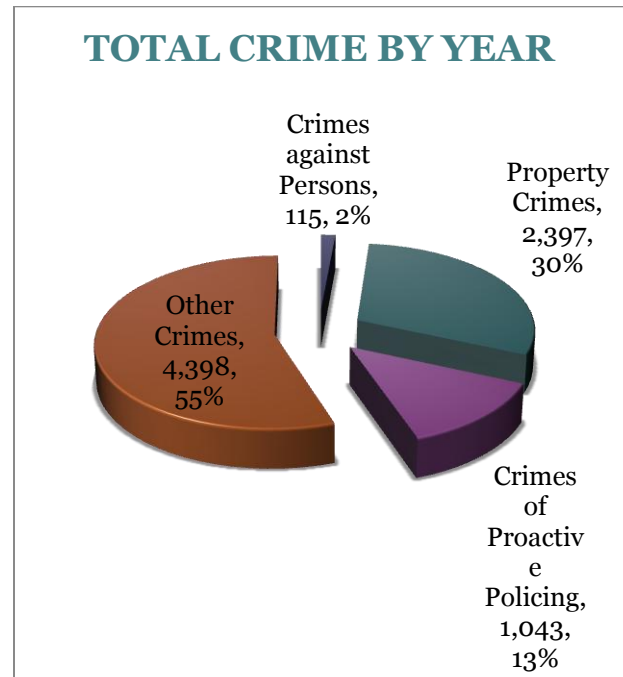
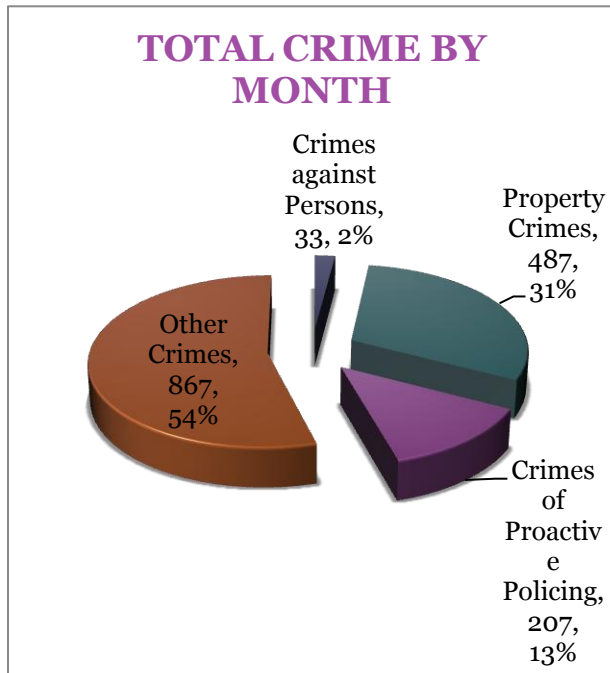
MONTHLY REPORT May 2012

June 8, 2012

TOTAL CRIME

The crime activity for the month of May 2012 was at a total of 1,594 NIBRIS reportable offenses, a 6% decrease, comparing to a total of offenses in May last year. With Jonesboro population equal to 67,351, the crime rate was at 24 crimes per 1,000 population for the month of May this year, comparing to 25 crimes per 1,000 population last year¹, a 7% decrease. As indicated on a pie chart below, Other Crimes absorb the majority, 54%, of this month's crime activity ($n = 867$). Property crimes fall into a second place and comprise of 31% of all the crimes ($n = 487$). Following in third and fourth places are crimes of proactive policing at 13% ($n = 207$) and crimes against persons at 2% ($n = 33$), respectively.

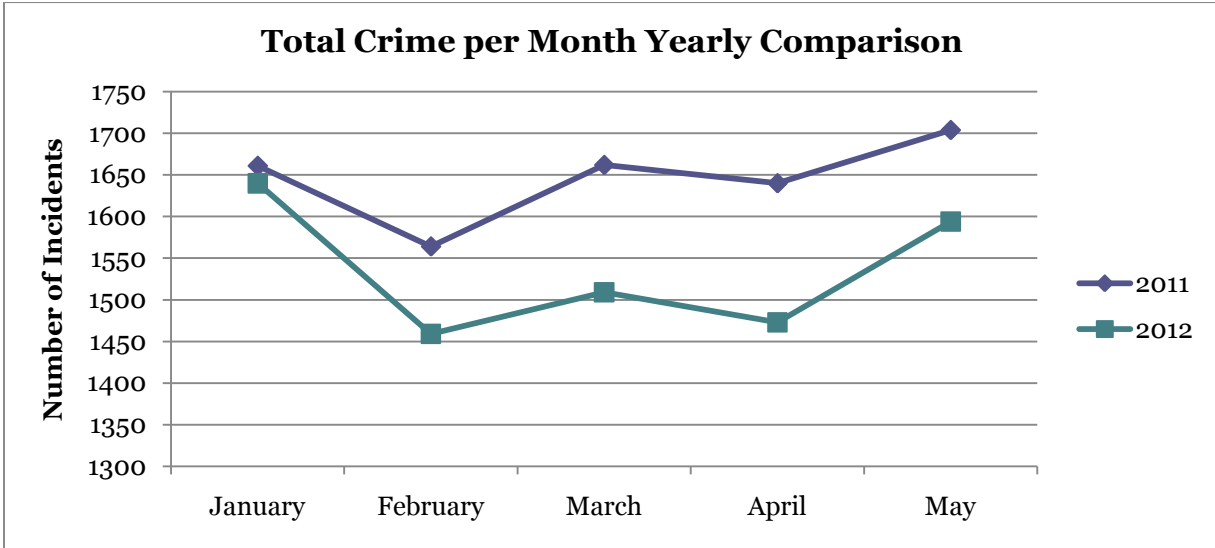
Year to date data includes number of crimes from January through May in 2012. A total of 7,953 NIBRIS reportable offenses were reported in 2012, a 5% decrease, comparing to the same period last year. The year to date crime rate amounts to 118 offenses per 1,000 population, compared to 125 offenses per 1,000 population last year. 55% of the total crimes is attributed to Other Crimes category ($n = 4,398$). Property Crimes comprise of 30% of total crimes to date, where $n = 2,397$. Crimes of Proactive Policing amount to 13% ($n = 1,043$) and crimes against persons comprise of 2% of total year to date number of crimes ($n = 115$).



¹ Note: 2011 numbers are based on 2011 population estimate, $n = 67,263$.

MONTHLY REPORT May 2012

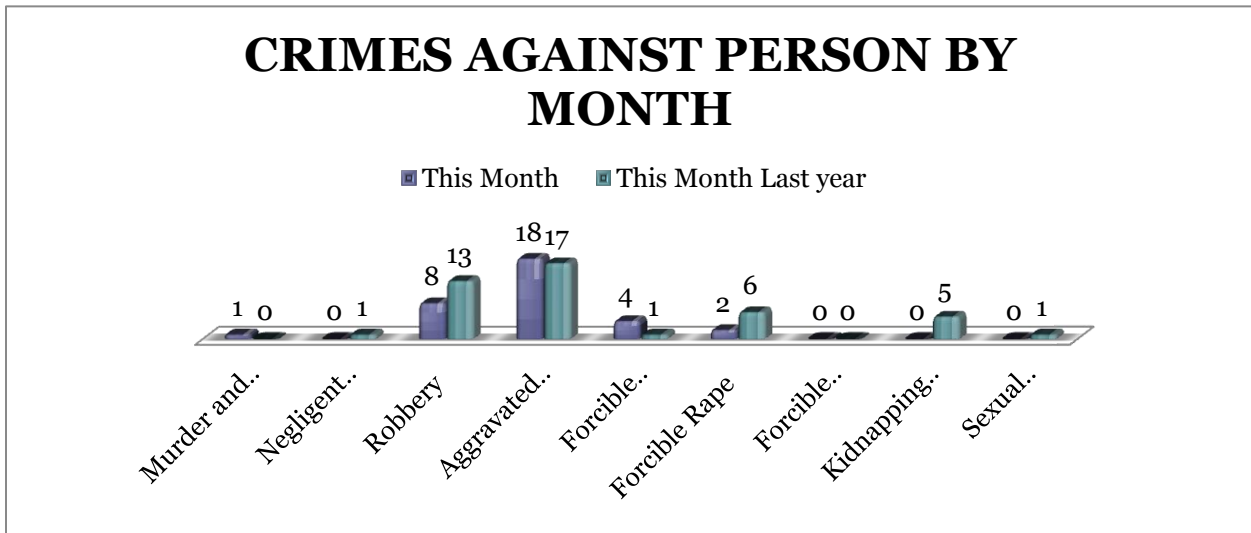
June 8, 2012



CRIMES AGAINST PERSONS

There are 9 crimes that make up this section. There were a total of 33 offenses in this area this month, down 25%, comparing to the last year's total in May. Kidnappings are down by 5 offences,

robberies are down 38% this month and rape decreased 67%. As demonstrated on the bar chart below, there are no significant changes in other crimes for this category.

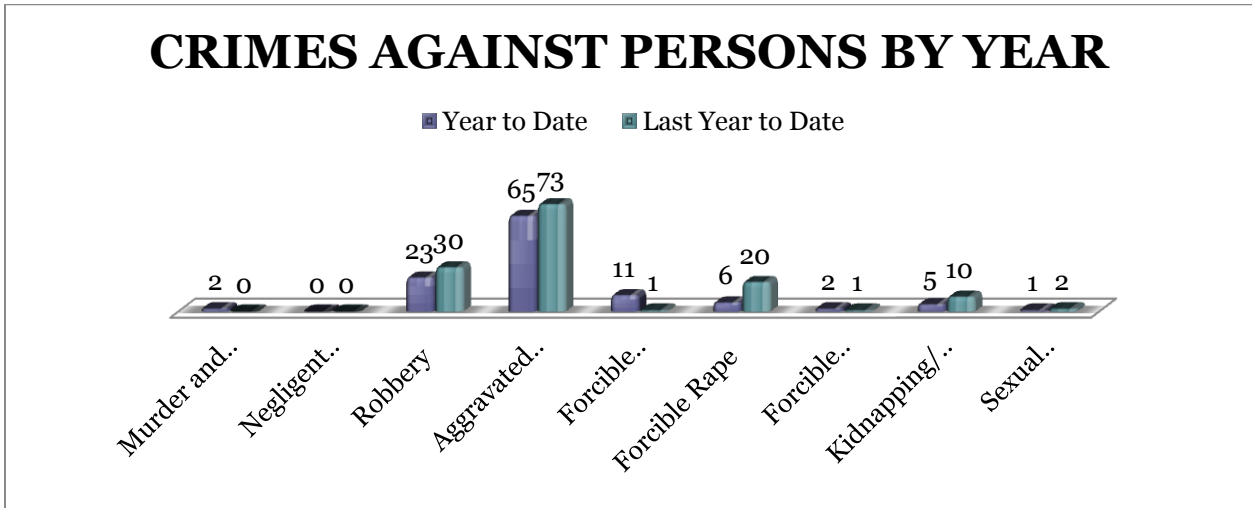


A bar graph on the following page shows the year to date data for Crimes against Persons, which amounts to a total of 115 incidents for this category of crimes, a 16% decrease, comparing to the year to date

data of last year. Aggravated Assaults are down 11%, robberies are down 23%, and forcible rapes are down 70%. To date we have 2 more murders than last year to date.

MONTHLY REPORT May 2012

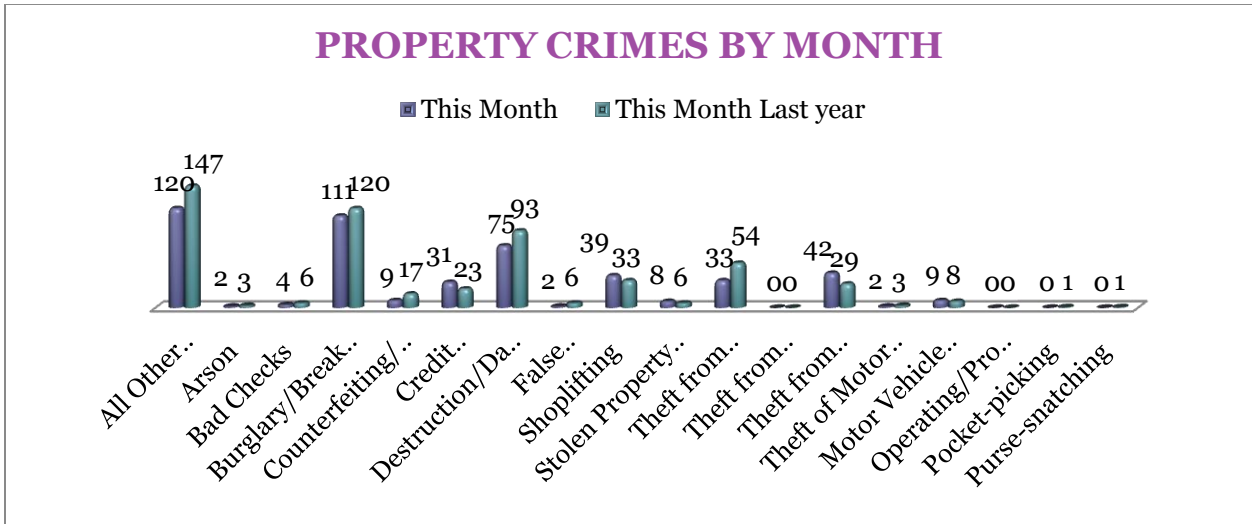
June 8, 2012



PROPERTY CRIMES

This section displays the criminal activity for 18 crimes, all against property. This month, there were a total of 487 Property Crimes, an 11% decrease comparing to May of the last year. The data indicates a significant change in

Counterfeiting/Forgery (down 8 offences) and Theft from Building (down 39%) and Theft from Motor Vehicle (up 45%). Credit Card/ATM Fraud increased by 35%.

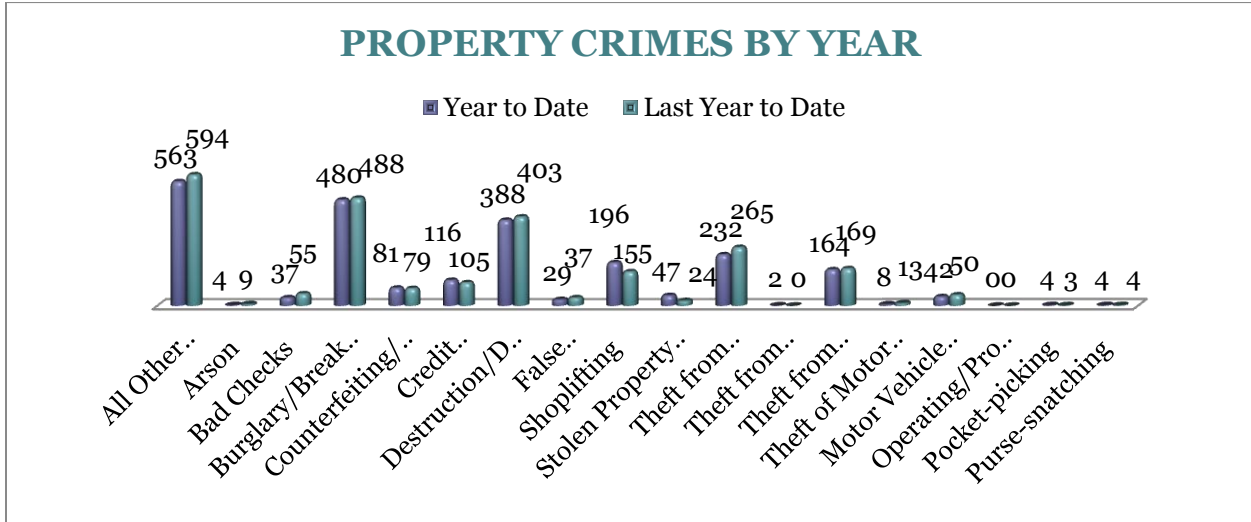


To date this year, 2,397 property offenses have occurred, a 2% decrease, comparing to the last year's data at this same time. The following significant changes are noted this year: Arson (down 5 offences),

Burglary/Breaking or Entering (down 2%), Motor Vehicle Theft (down 16%) Stolen Property Offenses increased by 23 offenses and Shoplifting increased by 26%.

MONTHLY REPORT May 2012

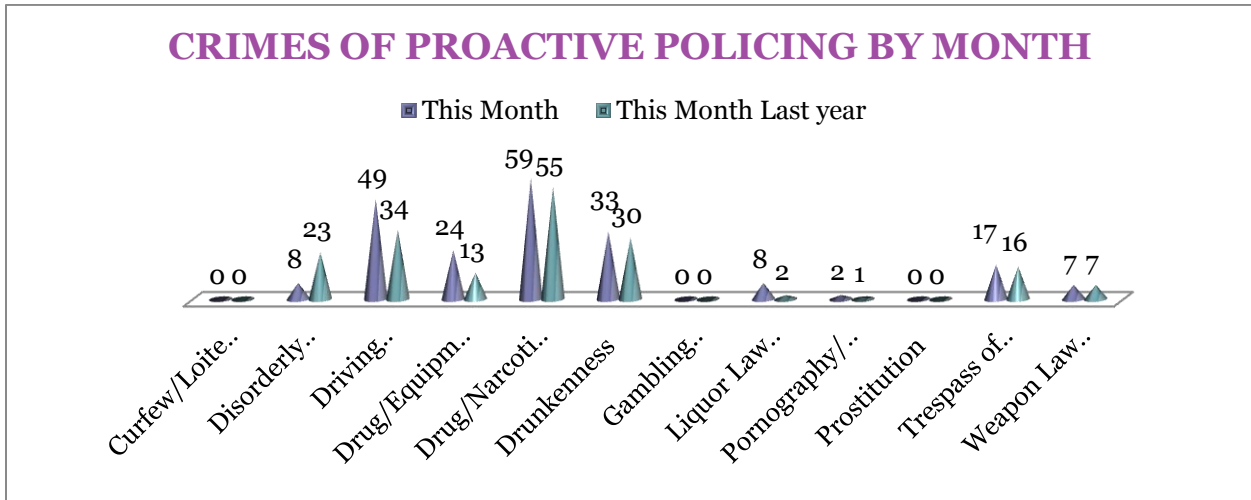
June 8, 2012



CRIMES OF PROACTIVE POLICING

Crimes of Proactive Policing are those crimes that result from police officers actively policing the streets to combat certain types of street crime. As a chart below indicates, twelve crimes fall under this category. A total of 207 offenses have occurred this month, a 14% increase,

comparing to May last year. There is a significant increase in Driving Under the Influence (up 44%), Drunkenness is up 10%, and there were 14 more Drug/Equipment Violations and 6 more Liquor Law Violations reported, comparing to May of the last year. Disorderly Conduct is down 65%.



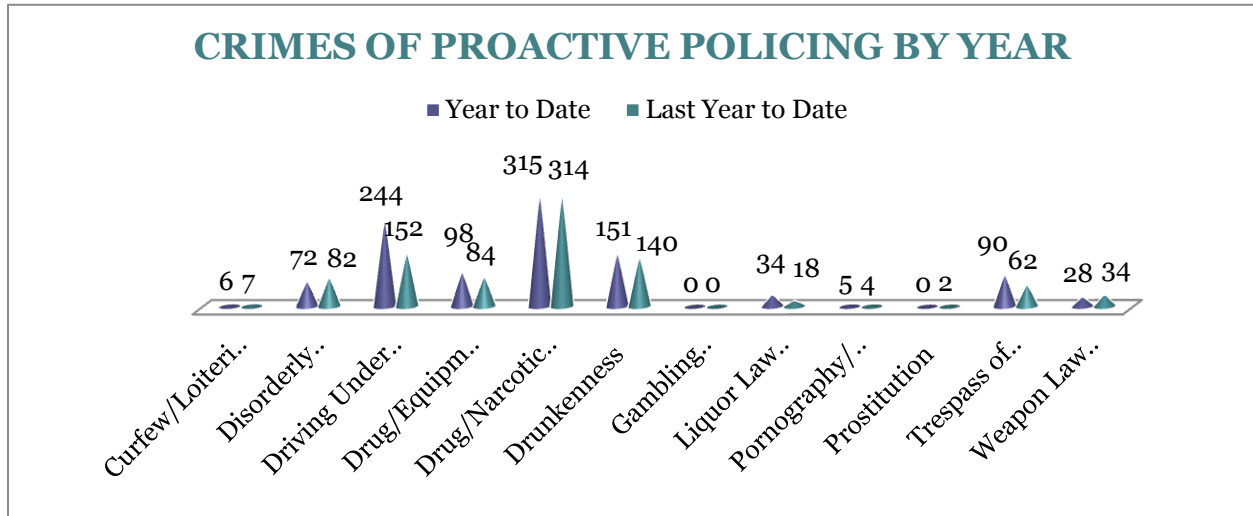
To date for the year 2012, there have been 1,043 crimes of proactive policing reported, a 16% increase, comparing to the last year's to date data. Driving Under the Influence is significantly higher than at the

same time last year (up 61%), Liquor Law Violations increased 89% this year, and Trespass of Real Property is up 45%. Weapon Law Violations decreased by 18% this year. There are no statistically

MONTHLY REPORT May 2012

June 8, 2012

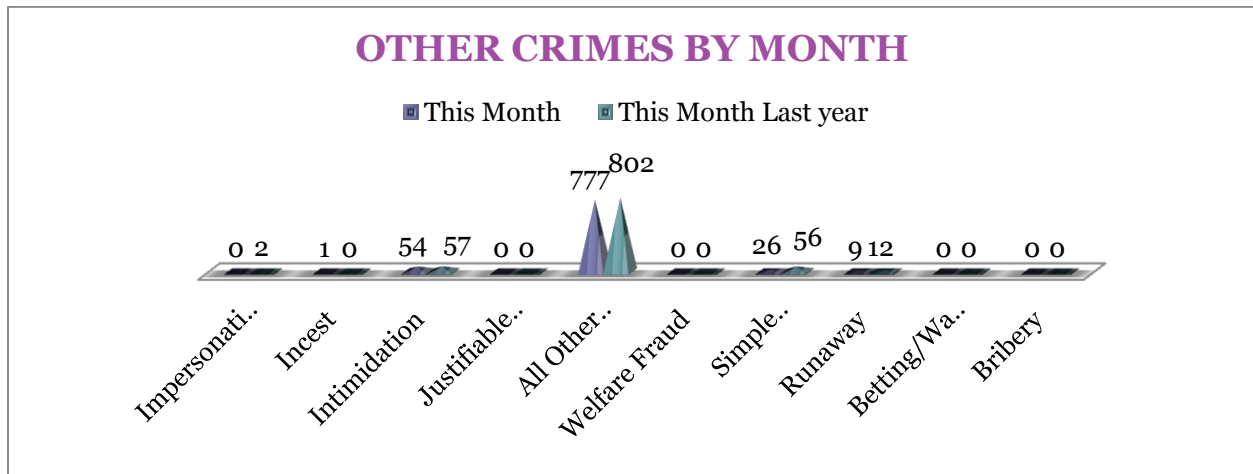
significant changes noted for other offenses in this category.



OTHER CRIMES

There are 10 crimes that fall into the Other Crimes category. This month, there have been a total of 867 Other Crimes, a 7% decrease, comparing to last May (n = 929).

Runaways are down 3 offences. Simple Assaults are down 54%. No other significant changes are noted in this category of crimes this month.

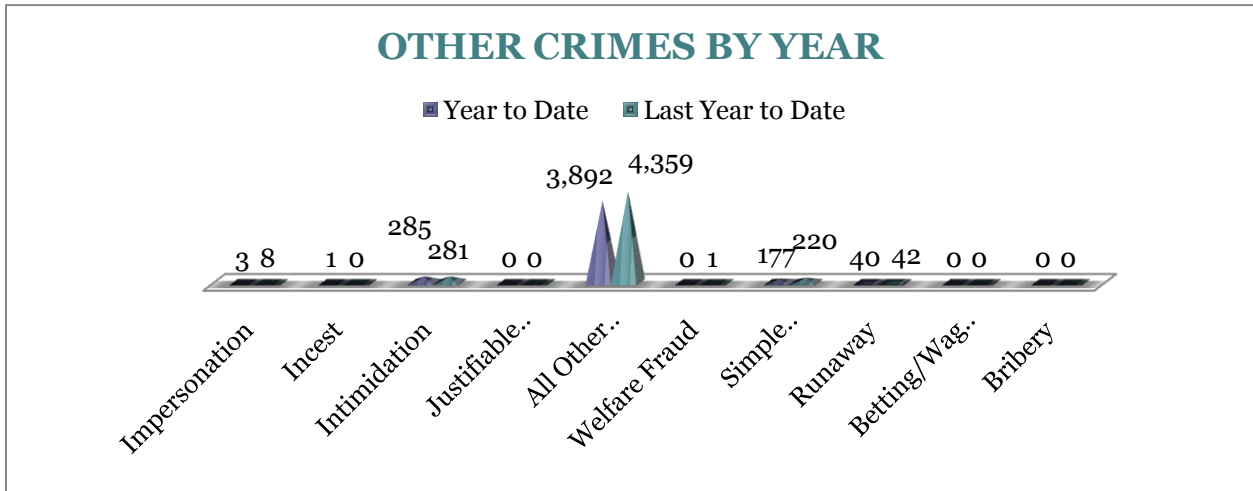


To date this year, there have been 4,398 Other Crimes offenses, a 10% decrease comparing to the last year's to date data. A notable change is observable for Simple Assaults that decreased by 20%.

Impersonations are down 5 offences. No statistically significant changes have been observed for other offenses within this category, comparing to the last year's data.

MONTHLY REPORT May 2012

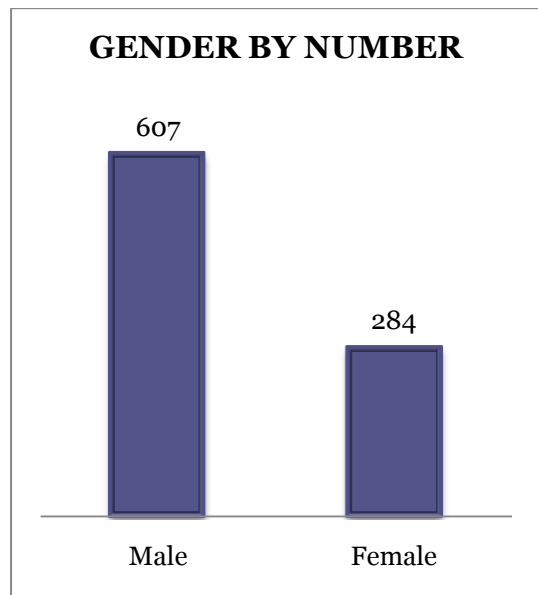
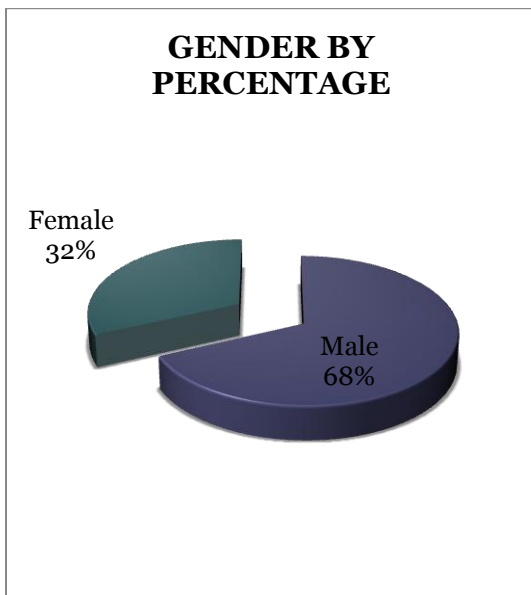
June 8, 2012



ARREST DEMOGRAPHICS

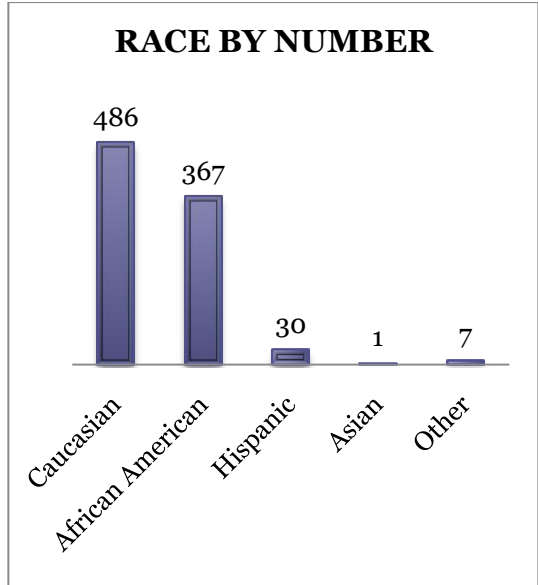
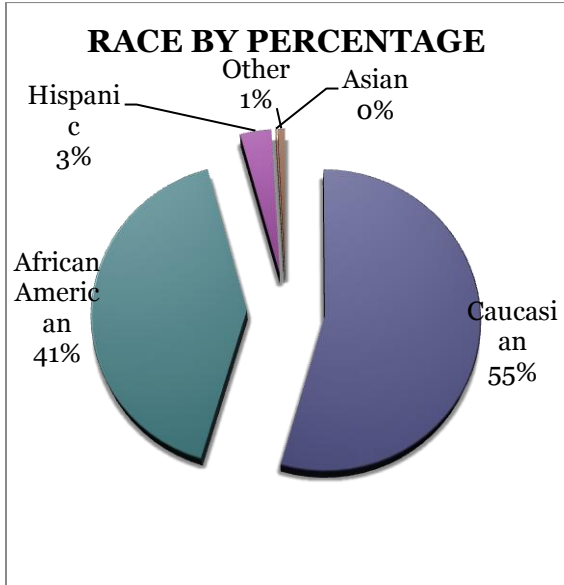
In May, there were a total of 891 arrests. Comparing with the last year's data for the month of May, there was a 2% increase in arrests; that is 56 arrests per 100 crimes in May of this year, comparing to 52 arrests per 100 crimes last year, a 9% increase for arrests per 100 crimes. This section breaks

down this month's arrests by race and gender. The majority of offenders have been male ($n = 607$), as opposed to female ($n = 284$) and Caucasian ($n = 486$) and African American ($n = 367$) as opposed to Hispanic ($n = 30$), Asian ($n = 1$), or other/unknown/bi-racial ($n = 7$).



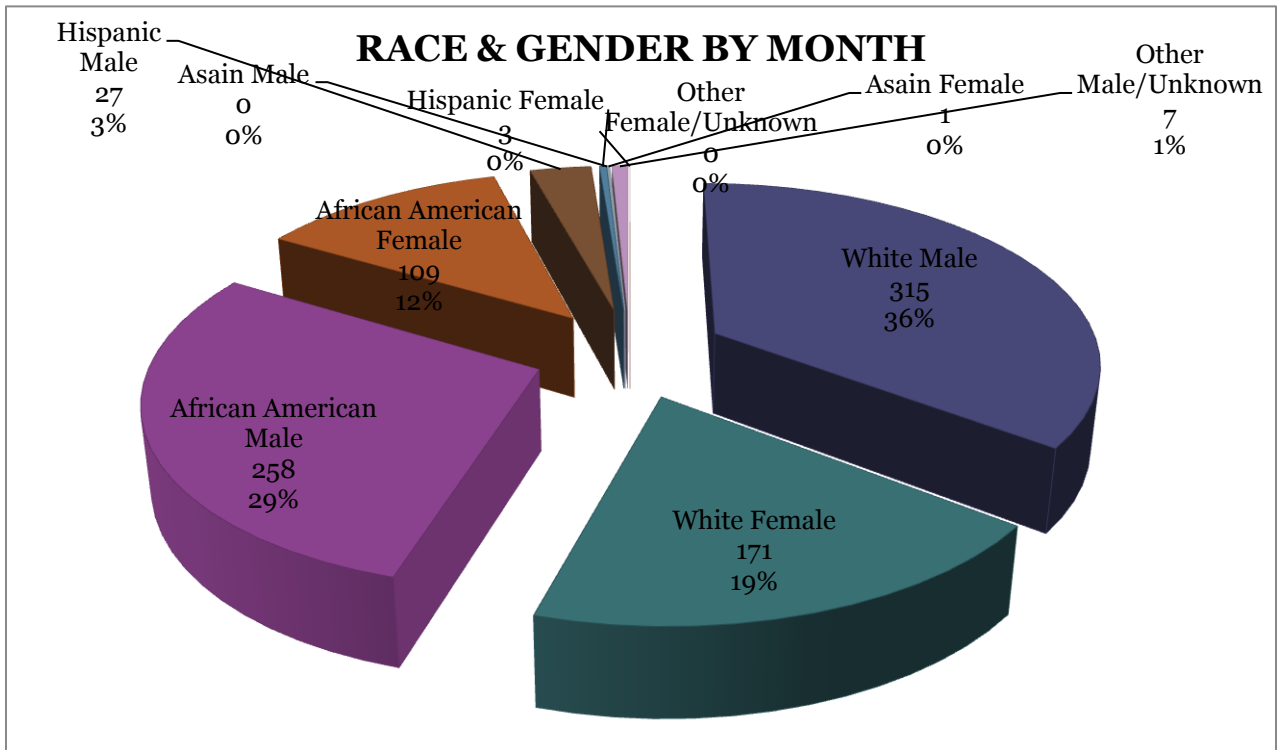
MONTHLY REPORT May 2012

June 8, 2012



Caucasian males make up the majority, 36%, of arrestees this month ($n = 315$). African American males make up 29% of arrestees for the month of May ($n = 258$). Caucasian females make up 19% ($n = 171$)

and African American females make up 12% ($n = 109$). Hispanic males make up 3% ($n = 27$), and Hispanic Females make up 0% ($n = 3$) of arrestees.



MONTHLY REPORT May 2012

June 8, 2012

EMERGENCY 911

Also known as Public Safety Answering Point (PSAP), the Emergency 911 Division is responsible for answering all calls from public for emergency assistance, accessing the needed information to best assist, and then assigning the most efficient and effective emergency response. In addition,

this division is responsible for setting priority call dispatching to field units including Police, Fire, and EMS. Emergency 911 also maintains all records for radio logs, calls for service, and other emergency service data collections.

Calls by Type	This Month	This Month Last Year	YTD	Last YTD	Change By Month	Change YTD
Land Line E911	761	993	3,814	4,133	-23%	-8%
Cell Phone E911	4,205	3,793	19,827	18,231	11%	9%
Admin Lines-non emer	16,958	17,288	86,698	80,665	-2%	7%
TOTALS	21,924	22,074	110,339	103,029	-1%	7%

Calls by Agency	This Month	This Month Last Year	YTD	Last YTD	Change By Month	Change YTD
Jonesboro PD Calls	7,232	7,132	34,771	32,825	1%	6%
Craighead Cty Sheriff	1,289	1,325	6,327	6,228	-3%	2%
Jonesboro Fire Dpt - dispatch	222	173	1,071	936	28%	14%
Jonesboro Fire Dpt - Med Asst	127	119	584	586	7%	0%
Craighead Cty - Fire	70	36	343	247	94%	39%
Craighead Cty - 1st Responder	110	107	529	430	3%	23%
Emerson Ambulance	339	296	1,527	1,219	15%	25%
Medic One	252	337	1,304	1,492	-25%	-13%
Air Evac	0	0	3	1	N/C	200%
Coroner	2	0	13	13	N/C	0%
ARK State Police	12	15	73	75	-20%	-3%
Jonesboro Animal Control	0	22	5	123	-100%	-96%
Wreckers Called	158	154	799	786	3%	2%
TOTALS	9,813	9,716	47,349	44,961	1%	5%

Calls by Municipality	This Month	This Month Last Year	YTD	Last YTD	Change By Month	Change YTD
Bay PD	111	122	573	458	-9%	25%
Bono PD	213	256	1261	782	-17%	61%
Brookland PD	176	169	914	763	4%	20%
Caraway PD	121	78	777	402	55%	93%
Cash PD	42	90	141	220	-53%	-36%
Egypt PD	10	15	45	51	-33%	-12%
Lake City PD	123	90	820	366	37%	124%
Monette PD	132	158	801	641	-16%	25%
TOTALS	928	978	5,332	3,683	-5%	45%

MONTHLY REPORT May 2012

June 8, 2012

UNIFORM PATROL DIVISION

The UPD is responsible for responding to calls into the Emergency - 911 Division by civilians and are normally the first responders. Jonesboro is divided into 6 patrol districts. Officers from UPD are assigned to a district and work the same

district every shift. In addition, when a Traffic Officer is not available, a UPD Officer will respond to traffic accidents and assist in directing traffic when necessary.

Incidents	This Month	This Month Last Year	YTD	Last YTD	Change By Month	Change YTD
Calls For Service	7,232	7,061	35,401	32,520	2%	9%
Complaints	3,963	4,890	19,748	19,929	-19%	-1%
Assists	1,206	1,011	5,999	6,533	19%	-8%
Incident Reports	871	963	4,249	4,737	-10%	-10%
Street Accidents	69	96	364	442	-28%	-18%
Private Property Accidents	32	49	223	219	-35%	2%
Traffic Stops	1,854	1,642	10,401	10,693	13%	-3%
Traffic Citations	729	843	3,489	3,582	-14%	-3%
Written Warnings	865	600	4435	3,521	44%	26%
DWI	38	24	202	122	58%	66%
Mis. Arrests	457	436	2,352	2,479	5%	-5%
Felony Arrests	96	104	450	460	-8%	-2%
Warrants Served	1,461	1,279	6,830	7,083	14%	-4%
Alarms	340	364	1,599	1,594		
TOTALS	19,213	19,362	95,742	93,914	-1%	2%
Hours Worked	8,929	9,050	45,091	52,216	-1%	-14%

PROWL

The Prowl unit is a uniformed street crimes unit specializing in criminal patrol, narcotics enforcement, gang investigation, and prostitution activity. The unit conducts directed patrols, investigates citizen

complaints of street-level criminal activity, and directly assists the 2nd Judicial Drug Task Force. PROWL also assists any division within the Jonesboro Police Department at any time when needed.

MONTHLY REPORT May 2012

June 8, 2012

Incidents	This Month	This Month Last Year	YTD	Last YTD	Change By Month	Change YTD
Street Accidents	0	0	0	0	N/C	N/C
Private Property Accidents	0	0	1	0	N/C	N/C
Traffic Citations	40	18	161	162	122%	-1%
DWI	0	0	1	0	N/C	N/C
Mis. Arrests	178	107	898	513	66%	75%
Felony Arrests	24	32	135	159	-25%	-15%
Drug Arrests	17	31	137	166	-45%	-17%
Public Intoxication Arrests	0	0	1	0	N/C	N/C
Calls For Service	125	76	415	473	64%	-12%
Alarms	0	0	0	0	N/C	N/C
Parking Citations	0	0	0	0	N/C	N/C
Written Warnings	80	38	244	232	111%	5%
Assists	0	0	0	0	N/C	N/C
TOTALS	464	302	1,993	1,705	54%	17%
Value of Drugs Seized	\$4,720	\$7,100	\$43,985	\$46,690	-34%	-6%
Value of Asstes Seized	0	500	24,218	44,796	-100%	-46%
Patrol Miles	5,550	4,650	28,800	25,520	19%	13%

CRIMINAL INVESTIGATIVE DIVISION

The CID is responsible for conducting follow-up investigations into criminal acts reported to the Jonesboro Police Department. The primary goal is to collect and present evidence that conclusively

leads to a successful arrest. Additionally, CID is charged with clearing additional crimes, recovering stolen property, preventing additional crimes, and gathering intelligence information.

Investigations	This Month	This Month Last Year	YTD	Last YTD	Change By Month	Change YTD
Criminal Investigations Assigned	77	105	335	427	-27%	-22%
Criminal Investigations Closed	58	94	237	376	-38%	-37%
Cleared by Arrests	42	71	163	267	-41%	-39%
Unfounded	9	3	29	33	200%	-12%
Exceptionally Cleared	5	1	21	41	400%	-49%
Filed With Prosecutors Office	5	4	18	15	25%	20%
TOTALS	196	278	803	1159	-29%	-31%

Crimes Against Persons	This Month	This Month Last Year	YTD	Last YTD	Change By Month	Change YTD
Criminal Investigations Assigned	17	33	79	99	-48%	-20%
Criminal Investigations Closed	21	29	72	90	-28%	-20%
Cleared by Arrests	12	25	52	67	-52%	-22%
Unfounded	3	3	7	6	0%	17%
Exceptionally Cleared	3	1	5	14	200%	-64%
Filed With Prosecutors Office	2	3	8	7	-33%	14%
TOTALS	58	94	223	283	-38%	-21%

MONTHLY REPORT May 2012

June 8, 2012

Property Crimes	This Month	This Month Last Year	YTD	Last YTD	Change By Month	Change YTD
Criminal Investigations Assigned	55	69	234	295	-20%	-21%
Criminal Investigations Closed	37	52	146	238	-29%	-39%
Cleared by Arrests	29	45	108	195	-36%	-45%
Unfounded	4	3	18	24	33%	-25%
Exceptionally Cleared	2	7	15	34	-71%	-56%
Filed With Prosecutors Office	2	0	7	3	N/C	133%
TOTALS	129	176	528	789	-27%	-33%

Criminal Investigations Assigned	3	2	10	14	50%	-29%
Criminal Investigations Closed	8	1	14	17	700%	-18%
Cleared by Arrests	5	1	7	5	400%	40%
Unfounded	2	2	5	10	0%	-50%
Exceptionally Cleared	0	0	1	0	N/C	N/C
Filed With Prosecutors Office	1	1	4	5	0%	-20%
TOTALS	19	7	41	51	171%	-20%
Miscellaneous Investigations Assigned	2	2	8	11	N/C	-27%
Miscellaneous Investigations Cleared	4	5	4	5	N/C	-20%

WARRANTS

The Warrants Division is responsible for serving warrants, criminal summonses, and subpoenas that are issued by the District Court. On city court days, the Warrants Division provides a bailiff for court and a transport officer. In addition, this Division

is responsible for transporting wanted persons arrested in other jurisdictions back to Jonesboro. The STEP program operates within this division and is a grant-funded operation in which officers can get paid overtime to enforce the safety belt law.

Arrests	This Month	This Month Last Year	YTD	Last YTD	Change By Month	Change YTD
Misdemeanor	1199	1034	5417	5449	16%	-1%
Felony	0	1	2	2	-100%	0%
Total Arrests	1199	1035	5419	5451	16%	-1%

Warrants by Activity	This Month	This Month Last Year	YTD	Last YTD	Change By Month	Change YTD
Subpoenas	420	487	1598	1699	-14%	-6%
Commitments	4	1	17	8	300%	113%
Traffic Citations	0	1	11	7	-100%	57%
Complaints	3	1	4	1	200%	300%
Assist	1	0	1	0	N/C	N/C
Alarms	0	0	0	0	N/C	N/C

Hours by Activity	This Month	This Month Last Year	YTD	Last YTD	Change By Month	Change YTD
SI Criminal	186	223.5	1072.5	1160.5	-17%	-8%
Court	117	121.5	569.33	594.33	-4%	-4%
Prisoner Transport	31	26	163	138.5	19%	18%

MONTHLY REPORT May 2012

June 8, 2012

Hours Worked	This Month	This Month Last Year	YTD	Last YTD	Change By Month	Change YTD
Regular Hours Worked	622	602	4775	3255.5	3%	47%
Overtime Hours Worked	4	1.5	22	38	167%	-42%
TOTAL Hours Worked	626	603.5	4797	3293.5	4%	46%

Mileage	This Month	This Month Last Year	YTD	Last YTD	Change By Month	Change YTD
Total Mileage	2845	2338	13105	12552	22%	4%

STEP	This Month	This Month Last Year	YTD	Last YTD	Change By Month	Change YTD
DWI Arrest	1	2	7	4	-50%	75%
DUI Arrest	0	0	0	0	N/C	N/C
Traffic Citations	311	100	1156	677	211%	71%
Felony Arrests	1	0	5	3	N/C	67%
Drug Arrests	1	0	1	1	N/C	0%
STEP TOTALS	314	102	1169	685	208%	71%
STEP Hours Worked	156	59	758	244.5	164%	210%
STEP Miles Driven	952	295	3954.4	2621	223%	51%

DRUG TASK FORCE

The DTF is responsible for investigating major drug traffickers in the area, including all types of illegal drugs. They

work closely with local, state, and federal agencies to eradicate drugs from the community.

INVESTIGATIONS	This Month	This Month Last Year	YTD	Last YTD	Change By Month	Change YTD
Opened	33	24	135	149	38%	-9%
Closed	18	24	102	141	-25%	-28%
TOTAL	51	48	237	290	6%	-18%

With Nexus to Jonesboro	This Month	This Month Last Year	YTD	Last YTD	Change By Month	Change YTD
Opened	30	24	128	149	25%	-14%
Closed				0	N/C	N/C
TOTAL	30	24	128	149	25%	-14%

Outside Jonesboro (No Known Nexus)	This Month	This Month Last Year	YTD	Last YTD	Change By Month	Change YTD
Opened	3	0	6		N/C	N/C
Closed	0	0			N/C	N/C
TOTAL	3	0	6	0	N/C	N/C

ASSISTANCE RENDERED	This Month	This Month Last Year	YTD	Last YTD	Change By Month	Change YTD
Assist to Outside Agencies	2	0	9	5	N/C	80%
Assist to Jonesboro UPD/CID	14	12	57	67	17%	-15%

MONTHLY REPORT May 2012

June 8, 2012

ASSISTANCE RENDERED	This Month	This Month Last Year	YTD	Last YTD	Change By Month	Change YTD
Assist to Outside Agencies	22	6	31	11	267%	182%
Assist to Jonesboro UPD/CID	15	15	72	82	0%	-12%
ARRESTS	This Month	This Month Last Year	YTD	Last YTD	Change By Month	Change YTD
Miscellaneous	2	8	40	46	-75%	-13%
Felony	23	30	138	228	-23%	-39%
Marijuana	3	12	20	48	-75%	-58%
Cocaine	5	1	12	8	400%	50%
Crack Cocaine	2	3	17	14	-33%	21%
Methamphetamine/ICE	5	6	42	54	-17%	-22%
LSD	0	0	0	0	N/C	N/C
Extasy (MDMA or Other Designer Drug)	0	0	0	0	N/C	N/C
Prescription	3	3	8	13	0%	-38%
Opiates (Heroin, Opium)	0	0	0	1	N/C	-100%
Labs	0	4	2	12	-100%	-83%
All Other Drug Offenses	8	0	18	0	N/C	N/C

ASSET FORFEITURE	This Month	This Month Last Year	YTD	Last YTD	Change By Month	Change YTD
Vehicles Seized (No.)	0	0	0	0	N/C	N/C
Value of Assets Seized(Includes Value of vehicles)	\$0	\$0	\$2,400	\$33,105	N/C	-93%
Asset Value Awarded to Jonesboro PD (State)		\$0	\$0	\$0	N/C	N/C
Asset Value Awarded to Jonesboro PD (Federal)		\$0	\$0	\$0	N/C	N/C
Asset Value Awarded to Jonesboro PD (Total)		\$0	\$0	\$0	N/C	N/C

ARRESTS DEMOGRAPHICS	This Month	This Month Last Year	YTD	Last YTD	Change By Month	Change YTD
White	13	15	54	98	-13%	-45%
African American	8	10	44	54	-20%	-19%
Latino	0	1	11	3	-100%	267%
Asian	0	0	0	0	N/C	N/C
Other/Bi-Racial	0	0	0	0	N/C	N/C
Male	12	24	78	125	-50%	-38%
Female	9	2	31	26	350%	19%
White Male	6	13	31	73	-54%	-58%
White Female	7	2	21	22	250%	-5%
African American Male	6	9	35	49	-33%	-29%
African American Female	2	0	8	3	N/C	167%
Latino Male	0	1	9	3	-100%	200%
Latino Female	0	0	0	0	N/C	N/C
Asian Male	0	0	0	0	N/C	N/C
Asian Female	0	0	0	0	N/C	N/C
Other/Bi-Racial Male	0	0	0	0	N/C	N/C
Other/Bi-Racial Female	0	0	0	0	N/C	N/C

TRAFFIC

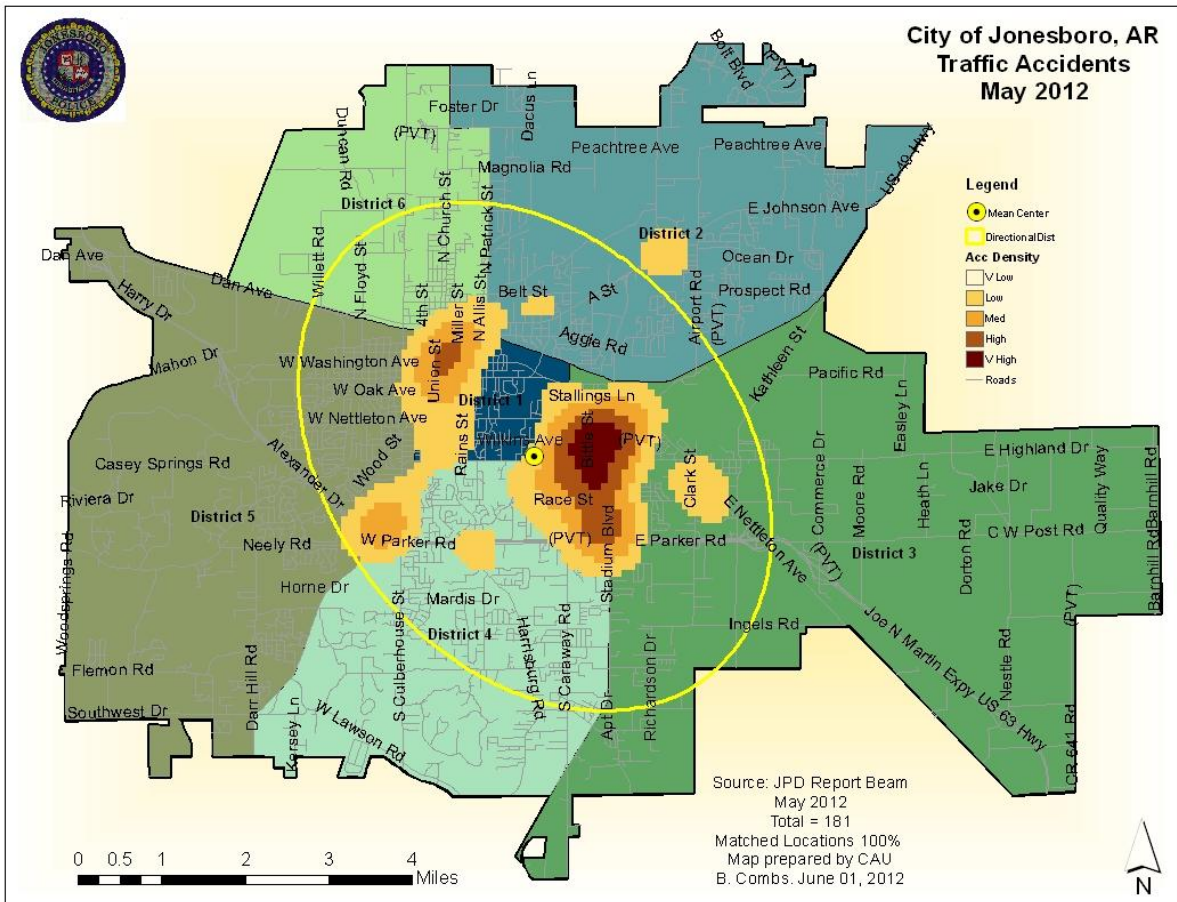
Comprised of three motor units and three Chargers, the Traffic Enforcement Unit responds to traffic accidents and provides increased enforcement in particularly challenging areas. This unit also provides

extra coverage for specific congestion problems and special events in the community. Last, they work details targeting specific issues, such as DWI enforcement and traffic safety checkpoints.

MONTHLY REPORT May 2012

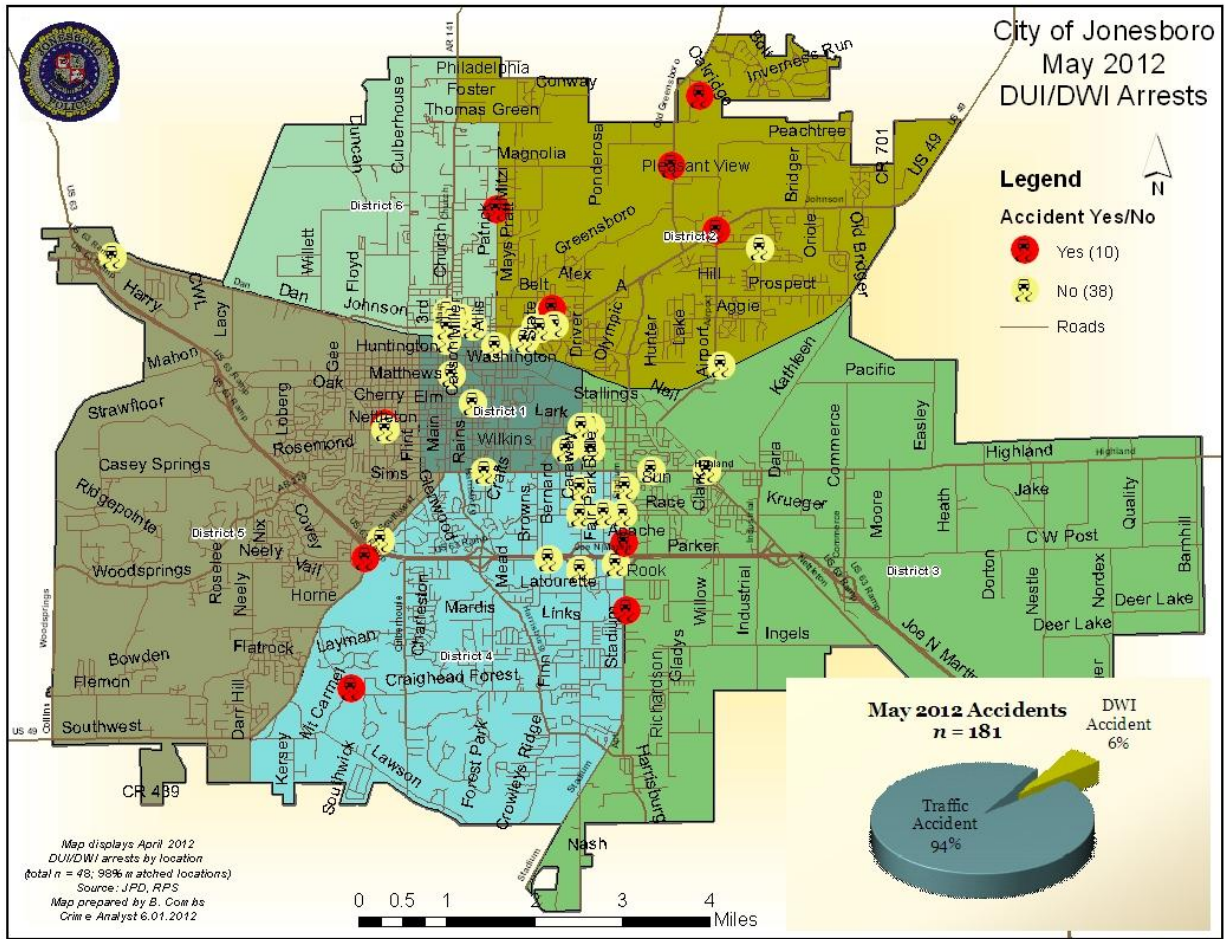
June 8, 2012

Incidents	This Month	This Month Last Year	YTD	Last YTD	Change By Month	Change YTD
Street Accidents	116	109	672	634	6%	6%
Private Property Accidents	29	40	184	198	-28%	-7%
Traffic Citations	163	166	701	843	-2%	-17%
DWI	5	5	17	22	0%	-23%
Mis. Arrests	11	28	84	88	-61%	-5%
Felony Arrests	0	2	1	11	-100%	-91%
Drug Arrests	0	0	0	0	N/C	N/C
Public Intoxication Arrests	0	0	0	1	N/C	-100%
Calls For Service	248	271	1213	1370	-8%	-11%
Alarms	0	1	0	9	-100%	-100%
Parking Citations	0	0	0	0	N/C	N/C
Written Warnings	131	51	554	481	157%	15%
TOTALS	703	673	3426	3657	4%	-6%
Value of Asstes Seized	\$0	\$0	\$0	\$0	N/C	N/C
Patrol Miles	8,108	4,292	31,326	24,008	89%	30%
Hours Worked	799.5	694.5	4210.5	3831.5	15%	10%



MONTHLY REPORT May 2012

June 8, 2012



PARKING ENFORCEMENT

The Parking Enforcement Division is responsible for enforcing parking laws in the downtown area. This service provides a

safe and convenient parking situation for the public.

CITATIONS ISSUED	This Month	This Month Last Year	YTD	Last YTD	Change By Month	Change YTD
Citations	41	41	139	175	0%	-21%
Verbal Warnings	20	12	67	0	N/C	N/C

MINUTES BY ACTIVITY	This Month	This Month Last Year	YTD	Last YTD	Change By Month	Change YTD
Office	605	365	460	2,460	66%	-81%
Admin(Non-Office)	0	585	2,515	3,820	-100%	-34%
Community	0		0	0	N/C	N/C
Training	0		600	0	N/C	N/C
Patrol	6,535	6,025	22,950	24,610	8%	-7%

MONTHLY REPORT May 2012

June 8, 2012

ANIMAL CONTROL

The Animal Control Division is responsible for educating the public on safe and humane issues regarding animal treatment, enforcing all animal laws and ordinances, assisting the public in resolving animal

issues, and protecting the safety and welfare of the citizens and animals in this community.

Incidents	This Month 04/12	This Month Last Year	YTD 2012	Last YTD 2011	Change By Month	Change YTD
Barking Complaints	8	25	46	83	-68%	-45%
Bite Reports	12	18	45	73	-33%	-38%
Door Hangers	33	41	247	187	-20%	32%
Welfare Checks	53	127	515	523	-58%	-2%
Advised of Rights	884	650	4,234	2,943	36%	44%
Incident Reports	11	11	36	26	0%	38%
Gone on Arrival	72	7	286	133	929%	115%
Complaints	809	662	3,975	3,146	22%	26%
Desk Complaints	1,503	1,653	6,673	7,823	-9%	-15%
Captured Dogs	150	154	759	684	-3%	11%
Captured Cats	10	23	29	57	-57%	-49%
Captured Wildlife	50	36	123	94	39%	31%
Chemical Captures	8	3	17	18	167%	-6%
Traps	78	13	163	54	500%	202%
Deceased Animals	100	71	454	341	41%	33%
Assist J.P.D.	4	7	23	46	-43%	-50%
Assist C.S.O.	1	2	1	8	-50%	-88%
Public Relations	502	800	2,305	3,770	-37%	-39%
CITATIONS ISSUED	61	161	299	573	-62%	-48%
WARNINGS ISSUED	36	50	214	311	-28%	-31%

Incidents	This Month 04/12	This Month Last Year	YTD 2012	Last YTD 2011	Change By Month	Change YTD
Physical Arrests	2	5	6	13	-60%	-54%
City Warrants Served	2	16	21	81	-88%	-74%
County Warrants Served	3	0	10	0	N/C	N/C
Felony Bench Warrants	0	0	0	0	N/C	N/C
Euthanized	74	76	326	279	-3%	17%
Deceased Animals Landfill lbs.	5,160	3,960	18,036	16,640	30%	8%
Wildlife Euthanized	50	36	123	94	39%	31%
Sent to Rescue Centers	10	8	47	17	25%	176%
Adoptions	54	37	235	204	46%	15%
Miles Driven	7,106	6,828	34,572	33,692	4%	3%

** Above numbers are based on work performed by 4 officers*

FLEET MAINTNANCE

The Fleet Maintenance is responsible for all of the police vehicle maintenance upkeep, cleanliness, and purchasing. In addition,

this Division handles most of the purchasing of equipment, supplies, and uniforms for all of the Police Department.

MONTHLY REPORT May 2012

June 8, 2012

Repair Costs by Model Year	This Month	This Month Last Year	YTD	Last YTD	Change By Month	Change YTD
95-99	\$0.00	\$0.00	\$0.00	\$0.00	N/C	N/C
2000	\$0.00	\$0.00	\$0.00	\$159.44	N/C	-100%
2001	\$0.00	\$0.00	\$300.46	\$11.61	N/C	2488%
2002	\$0.00	\$405.65	\$0.00	\$405.65	-100%	-100%
2003	\$0.00	\$0.00	\$0.00	\$0.00	N/C	N/C
2004	\$0.00	\$0.00	\$1,402.82	\$920.05	N/C	52%
2005	\$113.97	\$705.20	\$712.04	\$4,592.23	-84%	-84%
2006	\$8,535.94	\$3,363.06	\$19,518.73	\$10,159.52	154%	92%
2007	\$549.46	\$3,067.25	\$6,588.51	\$6,856.28	-82%	-4%
2008	\$11.61	\$0.00	\$1,923.02	\$1,212.91	N/C	59%
2009	\$490.48	\$49.59	\$930.86	\$145.62	N/C	N/C
2010	\$0.00	\$396.35	\$489.28	\$433.45	N/C	N/C
2011	\$156.09	\$0.00	\$757.32	n/a	N/C	N/C
2012	\$0.00	n/a	\$0.00	n/a		
Totals	\$9,857.55	\$7,987.10	\$32,623.04	\$24,896.76	23%	31%

Routine Preventative Maintenance by Model Year	This Month	This Month Last Year	YTD	Last YTD	Change By Month	Change YTD
95-99	\$0.00	\$0.00	\$72.00	\$0.00	N/C	N/C
2000	\$0.00	\$0.00	\$20.00	\$40.00	N/C	-50%
2001	\$0.00	\$40.00	\$0.00	\$68.00	-100%	-100%
2002	\$0.00	\$0.00	\$100.46	\$10.30	N/C	875%
2003	\$0.00	\$20.00	\$172.00	\$49.00	-100%	251%
2004	\$40.00	\$80.00	\$198.00	\$1,203.51	-50%	-84%
2005	\$40.00	\$497.29	\$445.35	\$1,824.23	-92%	-76%
2006	\$534.50	\$2,768.87	\$7,850.63	\$8,520.65	-81%	-8%
2007	\$610.49	\$628.50	\$5,332.49	\$4,099.76	-3%	30%
2008	\$392.82	\$738.82	\$2,075.31	\$1,441.19	-47%	44%
2009	\$1,069.22	\$950.65	\$3,951.62	\$1,656.42	N/C	N/C
2010	\$506.18	\$309.33	\$1,515.96	\$1,140.70	N/C	N/C
2011	\$264.00	\$20.00	\$820.50	\$20.00	N/C	N/C
2012	\$0.00	n/a	\$352.81	n/a		
Totals	\$3,457.21	\$6,053.46	\$22,907.13	\$20,073.76	-43%	14%

RECORDS

The Records Division is responsible for providing administrative and clerical support to the department. Major responsibilities include entering the accident and incident reports and tickets into the records database management

system, assisting the general public for report requests, performing criminal backgrounds, serving as a switchboard at times, performing validations, and setting up and managing the payment plans out of court.

MONTHLY REPORT May 2012

June 8, 2012

RECORDS	This Month	This Month Last Year	YTD	Last YTD	Change By Month	Change YTD
Incident/Arrest Reports Processed	1292	1369	6410	6506	-6%	-1%
Accident Reports Processed	182	207	1009	1022	-12%	-1%
Citations Processed	4557	4291	21697	21925	6%	-1%
Warnings Processed	993	500	4274	3151	99%	36%
Backgrounds	9	11	65	108	-18%	-40%
Fingerprints	108	84	623	514	29%	21%
Photos	0	4	0	15	-100%	-100%
Accident Requests	106	95	617	508	12%	21%
Accident Requests Online	101	175	527	830	-42%	-37%
TOTALS	7,348	6,736	35,222	34,579	9%	2%

PROFESSIONAL STANDARDS

The Office of Professional Standards, a unit within Administration, is charged with the compilation and updating of an extensive set of policies and procedures and providing a general operations guideline and code of conduct for officers to follow.

In the event that a member of the public does experience a negative interaction with an officer, mechanisms are in place for them to lodge a complaint. All complaints are reviewed and investigations completed in a timely manner. (See next page for details)

Professional Standards	This Month	This Month Last Year	YTD	Last YTD	Change By Month	Change YTD
Opened (TOTAL)	6	5	35	22	20%	59%
Closed	6	5	35	20	20%	75%
Inquiries	6	4	33	19	50%	74%
Formal Investigations	0	1	2	4	-100%	-50%
Sustained	5	4	28	16	25%	75%
Not-Sustained	0	1	0	1	-100%	-100%
Exonerated	0	0	1	0	N/C	N/C
Unfounded	1	0	6	3	N/C	100%

END OF REPORT