

JONESBORO POLICE DEPARTMENT

Monthly Report

JANUARY 2015

IN THIS REPORT

CRIME ANALYSIS	1
Total Crime	2
Crimes against Person	3
Property Crimes	4
Crimes of Proactive Policing	4
Other Crimes.....	5
Arrests Demographics	5
EMERGENCY 911	7
UPD	8
PROWL	8
CID	9
WARRANTS	9
DRUG TASK FORCE	10
TRAFFIC	11
Maps	12
ANIMAL CONTROL	13
FLEET MAINTENANCE	14
RECORDS	15
PROFESSIONAL	
STANDARDS	15

The purpose of the Jonesboro Police Department Monthly Report is to compile data into one integrated report for review, allowing for a seamless flow of information for better decision-making. After each department collates their monthly numbers and sends it to the Office of Crime Analysis, it is organized into sections of departmental data, analyzed and packaged, and finally disseminated to department heads, the Chief of Police, the City Mayor, and the City Council. Major sections include Crime Analysis, Emergency 911, Uniform Police Division, Prowl, Criminal Investigative Division, Warrants, Drug Task Force, Traffic, Animal Control, Fleet Maintenance, Records, and Professional Standards.

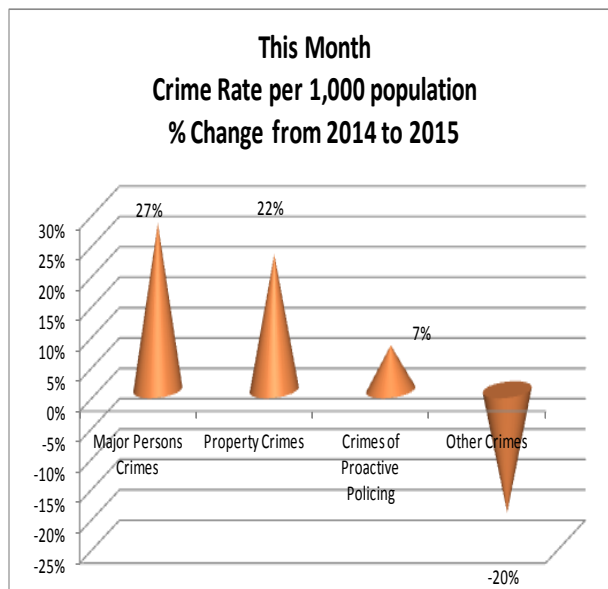
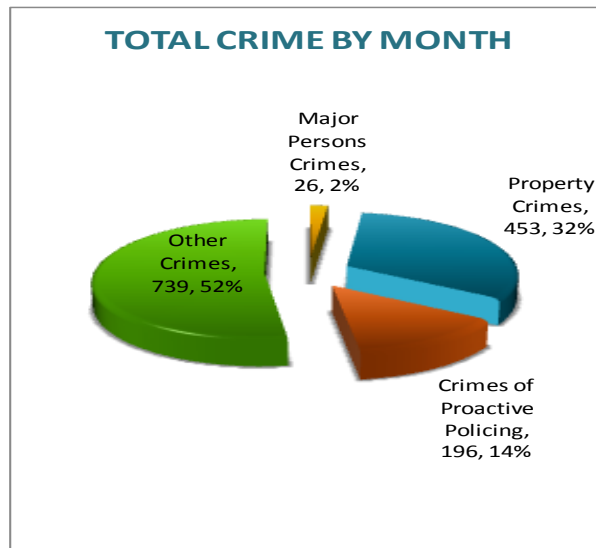
CRIME ANALYSIS

The Crime Analysis division consists of one Crime Analyst and one part-time Crime Analyst Assistant. The Crime Analyst position is responsible for the analysis and dissemination of crime activity data and the collection and maintenance of crime intelligence information for the city of Jonesboro. Additionally, the Office is charged with providing the department with current and accurate crime maps presenting crime activity data to audiences of interest and with responding to requests for crime data from civilians and departmental staff. Data exported from this division is used by field agents for more effective, efficient policing, by administration for improved staffing decisions, and by the Mayor's office for community decision making and enhanced public relations. The following section is broken down into Total Crime, Crimes against Persons, Property Crimes, Crimes of Proactive Policing, Other Crimes, Arrest Demographics, and Total Crime Monthly Comparison.

January 15, 2015

TOTAL CRIME

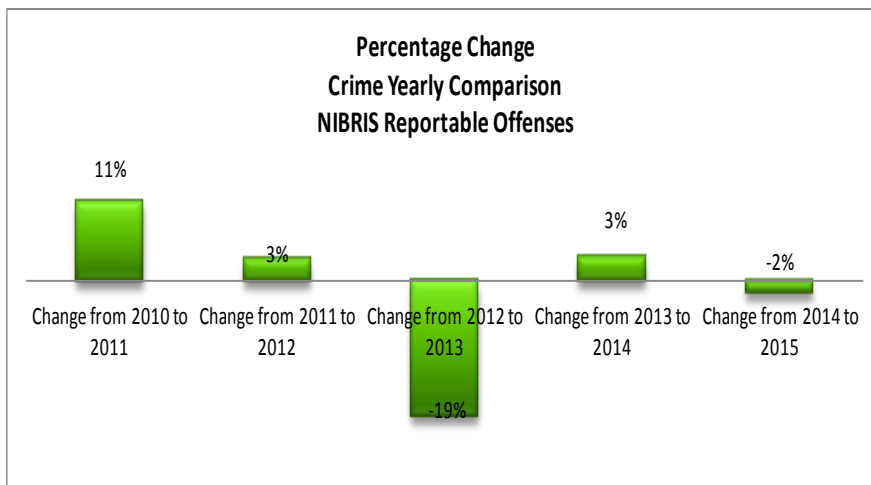
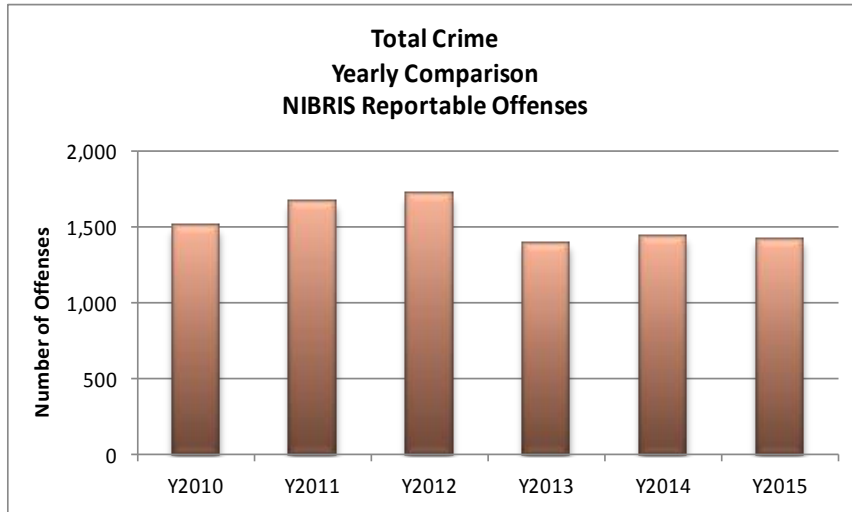
The crime activity for the month of January 2015 was at a total of 1,414 NIBRS reportable offenses, a -4% decrease, compared to the total of offenses reported in January of the last year. With Jonesboro population estimated to be equal to 72,958, the crime rate in January of this year was at 19 crimes per 1,000 population, compared to 21 crimes per 1,000 population last year¹, a -6% decrease. As indicated on the pie chart below, Other Crimes absorb the majority, 52%, of this month's crime activity ($n = 739$). Property Crimes fall into a second place and comprise of 32% of all the crimes ($n = 453$). Following in third and fourth places are, respectively, Crimes of Proactive Policing, comprising of 14% ($n = 196$) of all the crimes, and Crimes against Persons, comprising of 2% ($n = 26$) of all the crimes this month.



¹ Note: Population numbers are based on 2012 & 2013 population estimate, where 2012 population estimate is 70,187.

January 15, 2015

The charts below depict frequencies of crime by year, percentage change from year to year, and year to date yearly comparison.



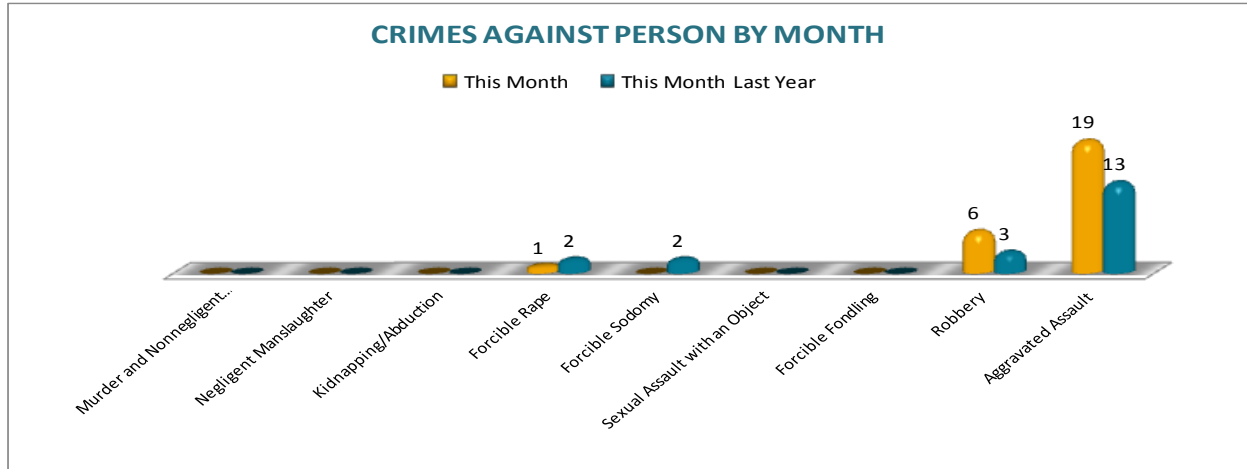
CRIMES AGAINST PERSONS

There are 9 crimes that make up this section. There were a total of 26 offenses in this area in January this year, 6 offenses more, comparing to January of the last year. There were 3 more Robberies and 6 more Aggravated Assaults

reported this year in January, comparing to the last year. As demonstrated on the column chart below, there are no significant changes in frequencies for the remaining offenses under this category.

MONTHLY REPORT JANUARY 2015

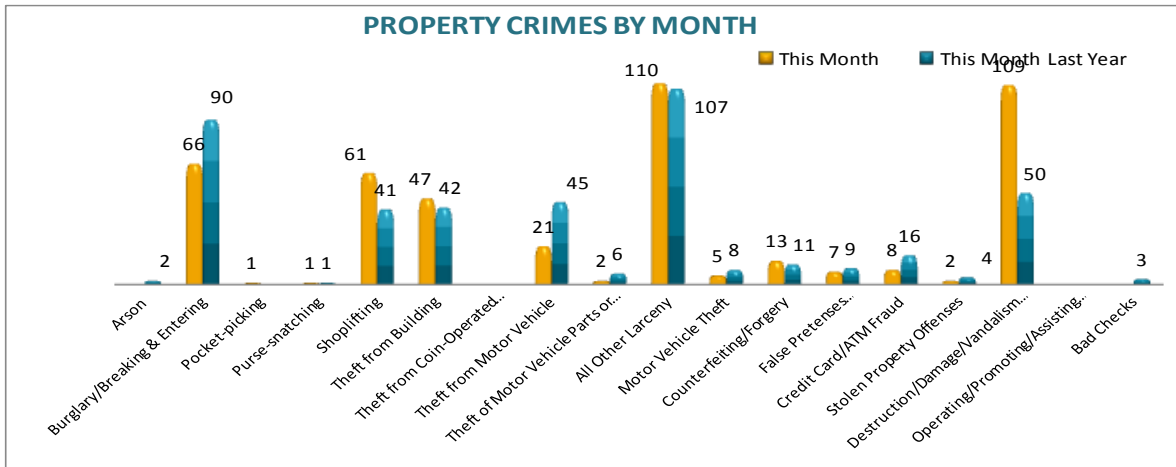
January 15, 2015



PROPERTY CRIMES

This section displays the criminal activity for 18 crimes, all against property. This month, there were a total of 453 Property Crimes, a 25% increase, comparing to January of the last year. The data indicates change in Burglary/Breaking & Entering, up 18%, and in Shoplifting, up 65%. Theft from building has increased, up 62%.

Theft from Motor Vehicle has decreased, down -16%. Destruction/ Damage/ Vandalism of Property offenses have also increased by 82%. No other significant changes are noted for the reminder of the offenses in this category of crimes.



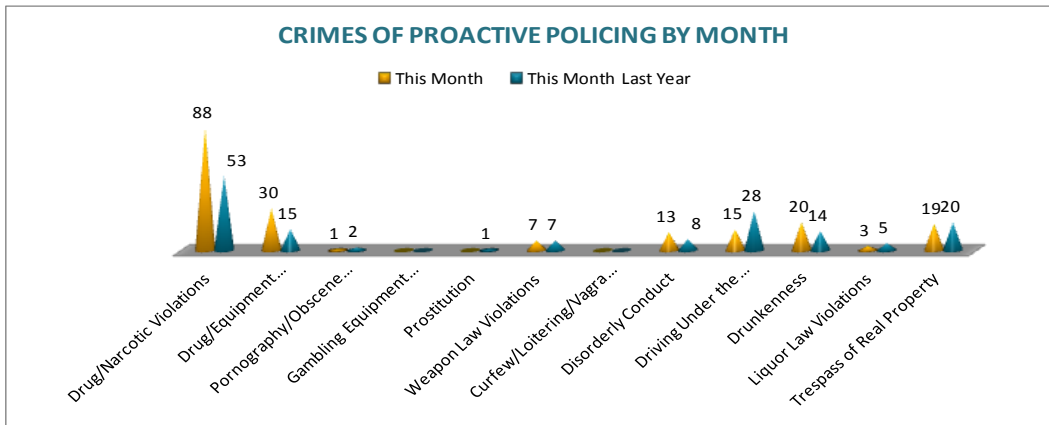
CRIMES OF PROACTIVE POLICING

Crimes of Proactive Policing are those crimes that result from police officers actively policing the streets to combat certain types of street crime. As chart below indicates, twelve crimes fall under this category. A total of 196 offenses have been reported this month, up 9%, comparing to January of the last year.

Drug/Narcotic Violations have increased by 40%. Drug/Equipment Violations increased by 88%. Driving under the Influence violations has decreased by -38%; Drunkenness is down -41%. There are no other major changes noted for the offenses in this category.

MONTHLY REPORT JANUARY 2015

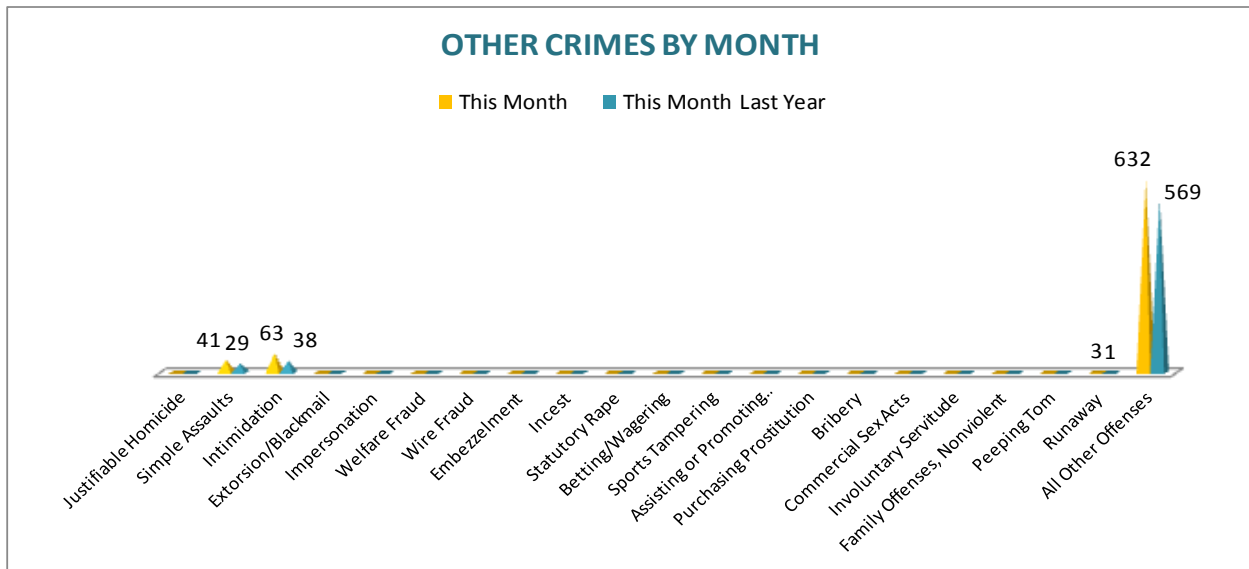
January 15, 2015



OTHER CRIMES

There are 21 crimes that fall into the Other Crimes category. This month, there have been a total of 739 Other Crimes reported, an -19% decrease, comparing to January of the last year. All Other Offenses have decreased by -23%.

Intimidation offenses have increased by 26% and Simple Assaults increased by 24%. No other major changes are noted in this category of crimes this month.



ARREST DEMOGRAPHICS

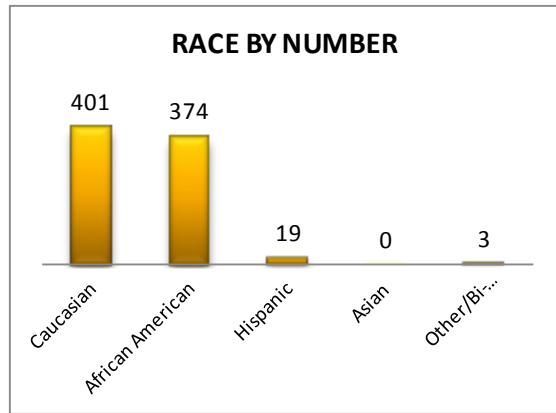
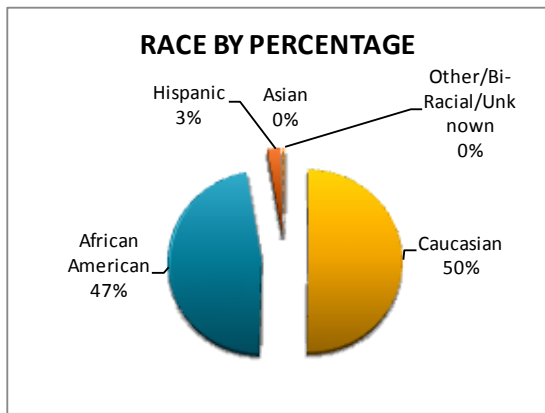
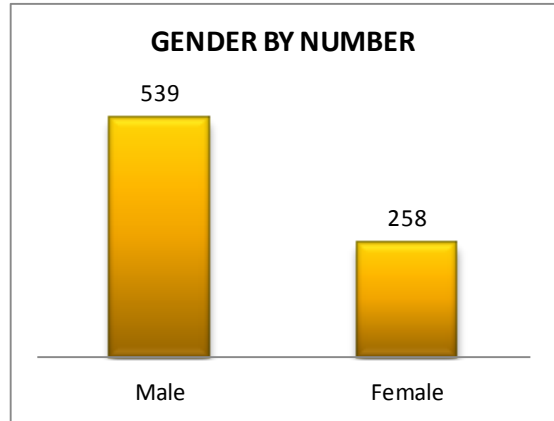
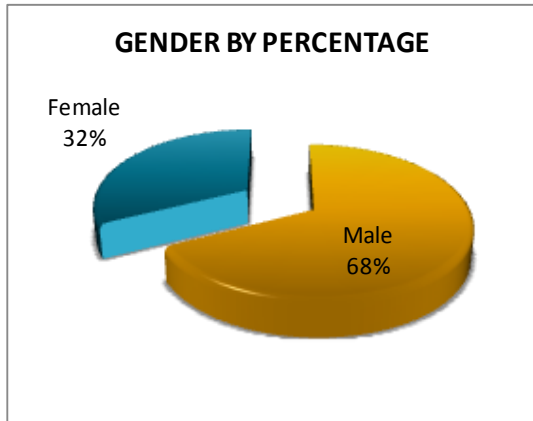
In January 2015, there were a total of 797 arrests carried out by the Jonesboro Police Department, down -13%, comparing with the last year's data for the month of January. The rate of arrests per offense has decreased by -

10% this month, comparing to the rate from the previous year; This section breaks down this month's arrests by race and gender. The majority of arrestees, 68%, have been male ($n = 539$), as opposed to 32% of female arrestees (n

January 15, 2015

= 258). As for the racial/ethnic composition, the majority of arrestees have been Caucasian (50%) and African American (47%), comparing

to Hispanic (3%), Asian (0%), or other/unknown/bi-racial (0%).

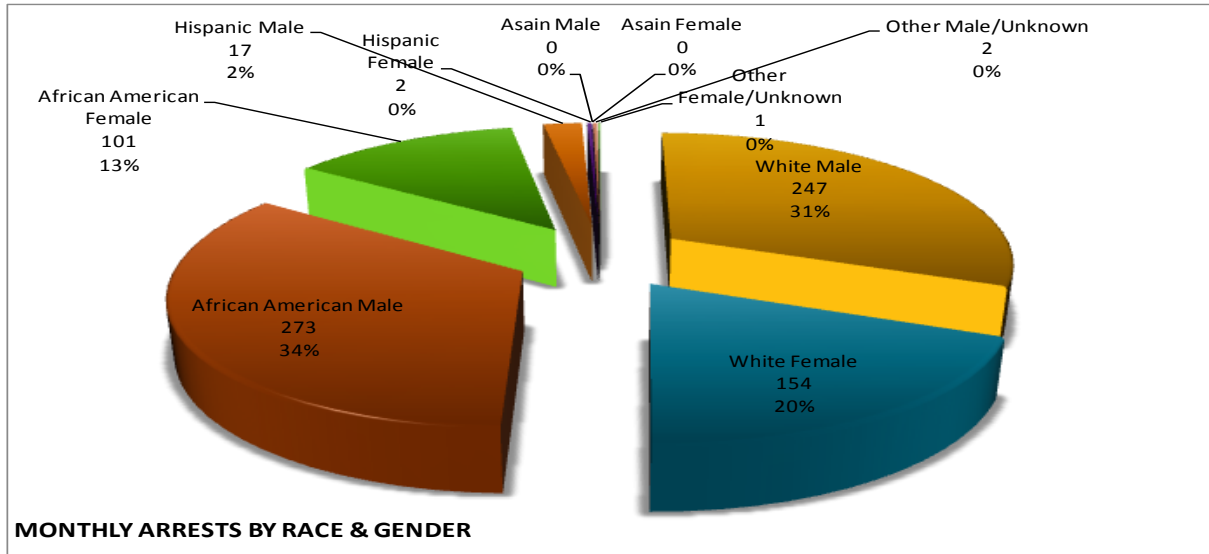


African American males make up the majority, a 34% of arrestees this month, followed by Caucasian males, 31%. Caucasian females make up 20% , while African American females make up 13% of all the arrestees this month. Hispanic

males make up 2%, while Hispanic females, male of Other/Unknown race, and female of Other/Unknown race make up 1% or less of all the arrestees this month.

MONTHLY REPORT JANUARY 2015

January 15, 2015



EMERGENCY 911

Also known as Public Safety Answering Point (PSAP), the Emergency 911 Division is responsible for answering all calls from public for emergency assistance, accessing the needed information to best assist, and then assigning the most efficient and effective emergency response. In addition, this division is responsible

for setting priority call dispatching to field units including Police, Fire, and EMS. Emergency 911 also maintains all records for radio logs, calls for service, and other emergency service data collections.

Calls by Type January-2015	This Month	This Month Last Year	YTD	Last YTD	Change By Month	Change YTD
Land Line E911	826	922	826	922	-10%	-10%
Cell Phone E911	5,334	4,317	5,334	4,317	24%	24%
Admin Lines-non emer	14,386	14,179	14,386	14,179	1%	1%
TOTALS	20,546	19,418	20,546	19,418	6%	6%

Calls by Agency	This Month	This Month Last Year	YTD	Last YTD	Change By Month	Change YTD
Jonesboro PD Calls	6,772	7,270	6,772	7,270	-7%	-7%
Craighead Cty Sheriff	981	1,108	981	1,108	-11%	-11%
Jonesboro Fire Dpt - dispatch	233	236	233	236	-1%	-1%
Jonesboro Fire Dpt - Med Asst	166	164	166	164	1%	1%
Craighead Cty - Fire	60	101	60	101	-41%	-41%
Craighead Cty - 1st Responder	114	115	114	115	-1%	-1%
Emerson Ambulance	314	296	314	296	6%	6%
Medic One	354	326	354	326	9%	9%
Air Evac	0	0	0	0	#DIV/0!	#DIV/0!
Coroner	3	4	3	4	-25%	-25%
ARK State Police	3	4	3	4	-25%	-25%
Jonesboro Animal Control	3	3	3	3	0%	0%
Wreckers Called	196	182	196	182	8%	8%
TOTALS	9,199	9,809	9,199	9,809	-6%	-6%

MONTHLY REPORT JANUARY 2015

January 15, 2015

Calls by Municipality	This Month	This Month Last Year	YTD	Last YTD	Change By Month	Change YTD
Bay PD	96	85	96	85	13%	13%
Bono PD	175	368	175	368	-52%	-52%
Brookland PD	294	138	294	138	113%	113%
Caraway PD	44	35	44	35	26%	26%
Cash PD	138	172	138	172	-20%	-20%
Egypt PD	15	11	15	11	36%	36%
Lake City PD	93	99	93	99	-6%	-6%
Monette PD	99	169	99	169	-41%	-41%
TOTALS	954	1,077	954	1,077	-11%	-11%

UNIFORM PATROL DIVISION

The UPD is responsible for responding to calls into the Emergency – 911 Division by civilians and are normally the first responders. Jonesboro is divided into 6 patrol districts. Officers from UPD are assigned to a district and

work the same district every shift. In addition, when a Traffic Officer is not available, a UPD Officer will respond to traffic accidents and assist in directing traffic when necessary.

Incidents	This Month	This Month Last Year	YTD	Last YTD	Change By Month	Change YTD
Calls for Service	6,772	7,270	6,772	7,270	-7%	-7%
Complaints	3,468	4,647	3,468	4,647	-25%	-25%
Assists	1,598	742	1,598	742	115%	115%
Incident Reports	870	685	870	685	27%	27%
Street Accidents	90	77	90	77	17%	17%
Private Property Accidents	39	23	39	23	70%	70%
Traffic Stops	2,366	2,623	2,366	2,623	-10%	-10%
Traffic Citations	433	463	433	463	-6%	-6%
Written Warnings	1,081	897	1,081	897	21%	21%
DWI	14	17	14	17	-18%	-18%
Mis. Arrests	387	373	387	373	4%	4%
Felony Arrests	111	81	111	81	37%	37%
Warrants Served	678	941	678	941	-28%	-28%
Alarms	391	429	391	429	-9%	-9%
Hours Worked	5,631	7,297	5,631	7,297	-23%	-23%

PROWL

The Prowl unit is a uniformed street crimes unit specializing in criminal patrol, narcotics enforcement, gang investigation, and prostitution activity. The unit conducts directed

patrols, investigates citizen complaints of street-level criminal activity, and directly assists the 2nd Judicial Drug Task Force. PROWL also assists any division within the Jonesboro Police Department at any time when needed.

*Note: PROWL Unit was not operating in January 2015, thus there is no data available.

MONTHLY REPORT JANUARY 2015

January 15, 2015

CRIMINAL INVESTIGATIVE DIVISION

The CID is responsible for conducting follow-up investigations into criminal acts reported to the Jonesboro Police Department. The primary goal is to collect and present evidence that

conclusively leads to a successful arrest. Additionally, CID is charged with clearing additional crimes, recovering stolen property, preventing additional crimes, and gathering intelligence information.

Investigations	This Month	This Month Last Year	YTD	Last YTD	Change By Month	Change YTD
Criminal Investigations Assigned	141	107	141	107	32%	32%
Criminal Investigations Closed	94	74	94	74	27%	27%
Cleared by Arrests	53	37	53	37	43%	43%
Unfounded	16	12	16	12	33%	33%
Exceptionally Cleared	16	15	16	15	7%	7%
Filed With Prosecutors Office	1	9	1	9	-89%	-89%
Property Crimes	This Month	This Month Last Year	YTD	Last YTD	Change By Month	Change YTD
Criminal Investigations Assigned	102	67	102	67	52%	52%
Criminal Investigations Closed	54	45	54	45	20%	20%
Cleared by Arrests	30	19	30	19	58%	58%
Unfounded	11	8	11	8	38%	38%
Exceptionally Cleared	13	12	13	12	8%	8%
Filed With Prosecutors Office	0	6	0	6	-100%	-100%
Investigations	This Month	This Month Last Year	YTD	Last YTD	Change By Month	Change YTD
Criminal Investigations Assigned	141	107	141	107	32%	32%
Criminal Investigations Closed	94	74	94	74	27%	27%
Cleared by Arrests	53	37	53	37	43%	43%
Unfounded	16	12	16	12	33%	33%
Exceptionally Cleared	16	15	16	15	7%	7%
Filed With Prosecutors Office	1	9	1	9	-89%	-89%
Crimes Against Children	This Month	This Month Last Year	YTD	Last YTD	Change By Month	Change YTD
Criminal Investigations Assigned	4	5	4	5	-20%	-20%
Criminal Investigations Closed	4	2	4	2	100%	100%
Cleared by Arrests	2	2	2	2	0%	0%
Unfounded	1	0	1	0	N/C	N/C
Exceptionally Cleared	1	0	1	0	N/C	N/C
Filed With Prosecutors Office	0	0	0	0	N/C	N/C
	This Month	This Month Last Year	YTD	Last YTD	Change By Month	Change YTD
Miscellaneous Investigations Assigned	12	3	12	3	300%	300%
Miscellaneous Investigations Cleared	8	1	8	1	700%	700%
FINGERPRINTS	This Month	This Month Last Year	YTD	Last YTD	Change By Month	Change YTD
Rolled for the Public	17	114	17	114	-85%	-85%

WARRANTS

The Warrants Division is responsible for serving warrants, criminal summonses, and subpoenas that are issued by the District Court. On city court days, the Warrants Division provides a bailiff for court and a transport officer. In addition, this Division is responsible for

transporting wanted persons arrested in other jurisdictions back to Jonesboro. The STEP program operates within this division and is a grant-funded operation in which officers can get paid overtime to enforce the safety belt law.

MONTHLY REPORT JANUARY 2015

January 15, 2015

Arrests	This Month	This Month Last Year	YTD	Last YTD	Change By Month	Change YTD
Misdemeanor	4	779	4	779	-.99%	-.99%
Felony	4	0	4	0	N/C	N/C
Total Arrests	8	779	8	779	-.99%	-.99%

Warrants by Activity	This Month	This Month Last Year	YTD	Last YTD	Change By Month	Change YTD
Subpoenas	522	795	522	795	-.34%	-.34%
Commitments	7	3	7	3	133%	133%
Traffic Citations	951	0	951	0	N/C	N/C
Complaints	1	1	1	1	0%	0%
Assist	3	0	3	0	N/C	N/C
Alarms	1	0	1	0	N/C	N/C

Hours by Activity	This Month	This Month Last Year	YTD	Last YTD	Change By Month	Change YTD
SI Criminal	162	271.83	162	271.83	-.40%	-.40%
Court	101.5	135.17	101.5	135.17	-.25%	-.25%
Prisoner Transport	53.5	46	53.5	46	16%	16%

Hours Worked	This Month	This Month Last Year	YTD	Last YTD	Change By Month	Change YTD
Regular Hours Worked	623.5	708	623.5	708	-.12%	-.12%
Overtime Hours Worked	15	7	15	7	114%	114%
TOTAL Hours Worked	638.5	715	638.5	715	-.11%	-.11%

Mileage	This Month	This Month Last Year	YTD	Last YTD	Change By Month	Change YTD
Total Mileage	3831	3732	3831	3732	3%	3%

STEP	This Month	This Month Last Year	YTD	Last YTD	Change By Month	Change YTD
DWI Arrest	0	0	0	0	N/C	N/C
DUI Arrest	0	0	0	0	N/C	N/C
Traffic Citations	50	49	50	49	2%	2%
Felony Arrests	0	0	0	0	N/C	N/C
Drug Arrests	0	0	0	0	N/C	N/C
STEP TOTALS	91	0	91	126	N/C	-.28%
STEP Hours Worked	118.5	56	118.5	56	112%	112%
STEP Miles Driven	543	293	543	293	85%	85%

DRUG TASK FORCE

The DTF is responsible for investigating major drug traffickers in the area, including all types of illegal drugs.

The DTF works closely with local, state, and federal agencies to eradicate drugs from the community.

INVESTIGATIONS	This Month	This Month Last Year	YTD	Last YTD	Change By Month	Change YTD
Opened	33	13	33	13	154%	154%
Closed	31	11	31	11	182%	182%
TOTAL	64	24	64	24	167%	167%
With Nexus to Jonesboro	This Month	This Month Last Year	YTD	Last YTD	Change By Month	Change YTD
Opened	33	9	33	9	267%	267%
Closed	0	0	0	0	N/C	N/C
TOTAL	33	9	33	9	267%	267%

MONTHLY REPORT JANUARY 2015

January 15, 2015

Outside Jonesboro (No Known Nexus)	This Month	This Month Last Year	YTD	Last YTD	Change By Month	Change YTD
Opened	0	0	0	0	N/C	N/C
Closed	0	0	0	0	N/C	N/C
TOTAL	0	0	0	0	N/C	N/C
ASSISTANCE RENDERED	This Month	This Month Last Year	YTD	Last YTD	Change By Month	Change YTD
Assist to Outside Agencies	0	1	0	1	-100%	-100%
Assist to Jonesboro UPD/CID	3	5	3	5	-40%	-40%
ARRESTS	This Month	This Month Last Year	YTD	Last YTD	Change By Month	Change YTD
Miscellaneous	21	4	21	4	425%	425%
Felony	44	24	44	24	83%	83%
Marijuana	10	2	10	2	400%	400%
Cocaine	0	0	0	0	N/C	N/C
Crack Cocaine	2	4	2	4	-50%	-50%
Methamphetamine/ICE	21	4	21	4	425%	425%
LSD	0	0	0	0	N/C	N/C
Extasy (MDMA or Other Designer Drug)	0	0	0	0	N/C	N/C
Prescription	4	1	4	1	300%	300%
Opiates (Heroin, Opium)	0	0	0	0	N/C	N/C
Labs	0	0	0	0	N/C	N/C
All Other Drug Offenses	11	2	11	2	450%	450%
ASSET FORFEITURE	This Month	This Month Last Year	YTD	Last YTD	Change By Month	Change YTD
Vehicles Seized (No.)	0	0	0	0	N/C	N/C
Value of Assets Seized(Includes Value of vehicles)	\$4,047.00	\$894	\$4,047	\$ 894.00	353%	353%
Asset Value Awarded to Jonesboro PD (State)	\$ -	\$ -	\$ -	\$ -	N/C	N/C
Asset Value Awarded to Jonesboro PD (Federal)	\$ -	\$ -	\$ -	\$ -	N/C	N/C
Asset Value Awarded to Jonesboro PD (Total)	\$ -	\$ -	\$ -	\$ -	N/C	N/C
ARRESTS DEMOGRAPHICS	This Month	This Month Last Year	YTD	Last YTD	Change By Month	Change YTD
White	24	6	24	6	300%	300%
African American	11	7	11	7	57%	57%
Latino	0	0	0	0	N/C	N/C
Asian	0	0	0	0	N/C	N/C
Other/Bi-Racial	0	0	0	0	N/C	N/C
Male	23	9	23	9	156%	156%
Female	13	4	13	4	225%	225%
White Male	12	4	12	4	200%	200%
White Female	12	2	12	2	500%	500%
African American Male	9	4	9	4	125%	125%
African American Female	1	2	1	2	-50%	-50%
Latino Male	0	0	0	0	N/C	N/C
Latino Female	0	0	0	0	N/C	N/C
Asian Male	0	0	0	0	N/C	N/C
Asian Female	0	0	0	0	N/C	N/C
Other/Bi-Racial Male	0	0	0	0	N/C	N/C
Other/Bi-Racial Female	0	0	0	0	N/C	N/C

TRAFFIC

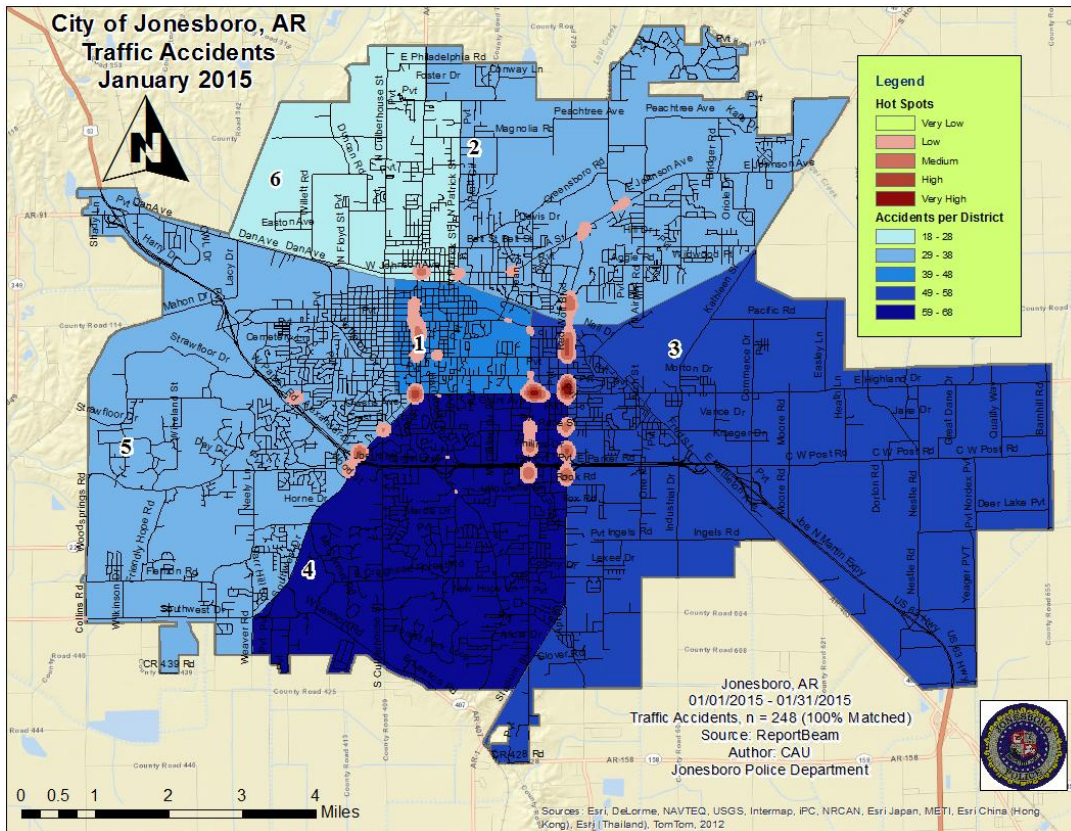
The Traffic Enforcement Unit responds to traffic accidents and provides increased enforcement in particularly challenging areas. This unit also provides extra coverage for specific congestion

problems and special events in the community. Last, they work details targeting specific issues, such as DWI enforcement and traffic safety checkpoints.

MONTHLY REPORT JANUARY 2015

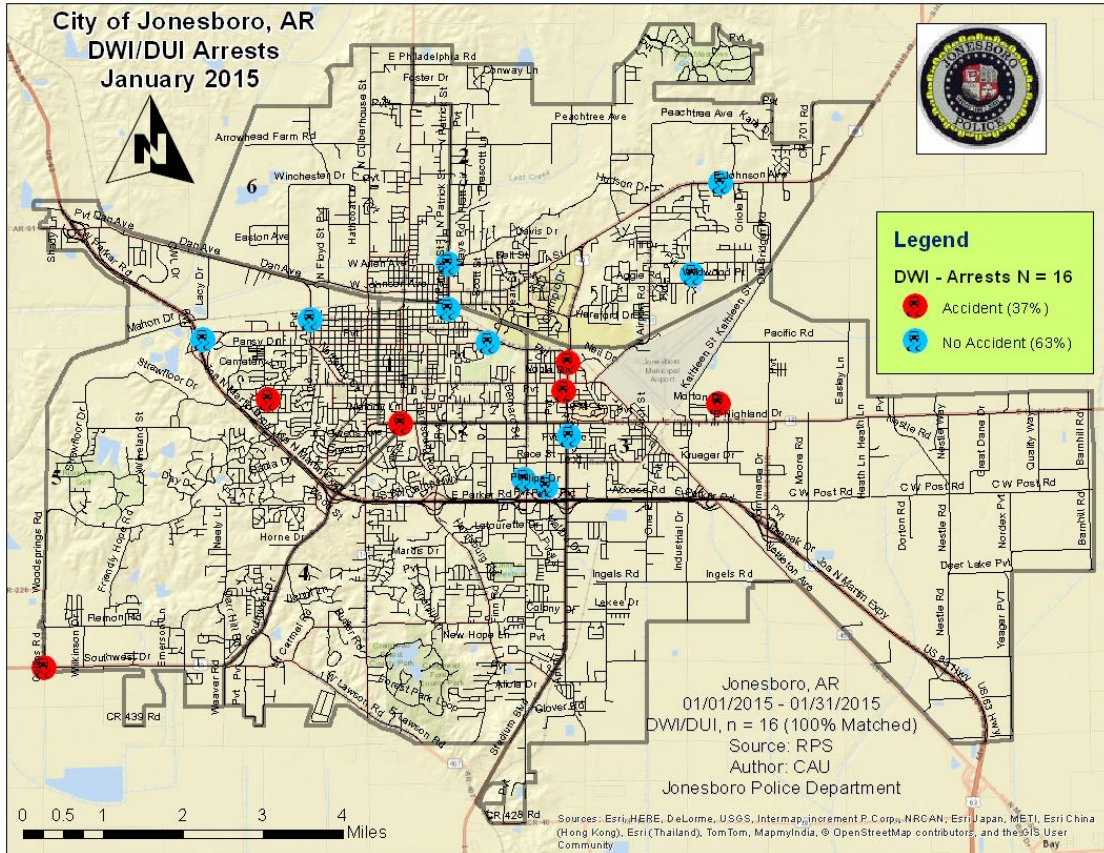
January 15, 2015

Incidents	This Month	This Month Last Year	YTD	Last YTD	Change By Month	Change YTD
Street Accidents	149	135	149	135	10%	10%
Private Property Accidents	39	43	39	43	-9%	-9%
Traffic Citations	153	80	153	80	91%	91%
DWI	2	3	2	3	-33%	-33%
Mis. Arrests	23	29	23	29	-21%	-21%
Felony Arrests	0	3	0	3	-100%	-100%
Drug Arrests	0	0	0	0	N/C	N/C
Public Intoxication Arrests	0	0	0	0	N/C	N/C
Calls For Service	110	205	110	205	-46%	-46%
Alarms	0	0	0	0	N/C	N/C
Parking Citations	0	0	0	0	N/C	N/C
Written Warnings	167	370	167	370	-55%	-55%
TOTALS	643	868	643	868	-26%	-26%
Value of Asstes Seized	\$ -	\$ -	\$ -	\$ -	N/C	N/C
Patrol Miles	5,413	5,280	5,413	5,280	3%	3%
Hours Worked	1006	1100	1006	1100	-9%	-9%



MONTHLY REPORT JANUARY 2015

January 15, 2015



ANIMAL CONTROL

The Animal Control Division is responsible for educating the public on safe and humane issues regarding animal treatment, enforcing all animal laws and ordinances, assisting the public

in resolving animal issues, and protecting the safety and welfare of the citizens and animals in this community.

Incident/Service	This Month	This Month Last Year	YTD	Last YTD	Change By Month	Change YTD
Barking Complaints	9	4	9	4	125%	125%
Bite Reports	3	3	3	3	0%	0%
Door Hangers	54	52	54	52	4%	4%
Welfare Checks	50	50	50	50	0%	0%
Advised of Rights	964	987	964	987	-2%	-2%
Incident Reports	2	2	2	2	0%	0%
Gone on Arrival	66	43	66	43	53%	53%
Complaints	578	830	578	830	-30%	-30%
Desk Complaints	1414	1362	1414	1362	4%	4%
Captured Dogs	101	126	101	126	-20%	-20%
Captured Cats	8	5	8	5	60%	60%
Captured Wildlife	7	6	7	6	17%	17%
Chemical Captures	2	2	2	2	0%	0%
Traps	18	7	18	7	157%	157%
Deceased Animals	73	54	73	54	35%	35%
Assist J.P.D.	2	5	2	5	-60%	-60%
Assist C.S.O.	2	7	2	7	-71%	-71%
Public Relations	304	341	304	341	-11%	-11%

MONTHLY REPORT JANUARY 2015

January 15, 2015

Incident/Service	This Month	This Month Last Year	YTD	Last YTD	Change By Month	Change YTD
CITATIONS ISSUED	49	46	49	46	7%	7%
WARNINGS ISSUED	78	114	78	114	-32%	-32%
Physical Arrests	1	4	1	4	-75%	-75%
City Warrants Served	1	6	1	6	-83%	-83%
County Warrants Served	0	0	0	0	N/C	N/C
Felony Bench Warrants	0	0	0	0	N/C	N/C
Euthanized	42	40	42	40	5%	5%
Deceased Animals Landfill lbs.	1440	1020	1440	1020	41%	41%
Wildlife Euthanized	7	6	7	6	17%	17%
Sent to Rescue Centers	3	12	3	12	-75%	-75%
Adoptions	33	48	33	48	-31%	-31%
Miles Driven	8,802	8,188	8,802	8,188	7%	7%

FLEET MAINTNANCE

The Fleet Maintenance is responsible for all of the police vehicle maintenance upkeep, cleanliness, and purchasing. In addition, this

Division handles most of the purchasing of equipment, supplies, and uniforms for all of the Police Department.

Repair Costs by Model Year	This Month	This Month Last Year	YTD	Last YTD	Change By Month	Change YTD
95-99	\$ -	\$ -	\$ -	\$ -	N/C	N/C
2000	\$ -	\$ -	\$ -	\$ -	N/C	N/C
2001	\$ -	\$ -	\$ -	\$ -	N/C	N/C
2002	\$ -	\$ -	\$ -	\$ -	N/C	N/C
2003	\$ -	\$ -	\$ -	\$ -	N/C	N/C
2004	\$ 475.51	\$ -	\$ 475.51	\$ -	N/C	N/C
2005	\$ -	\$ -	\$ -	\$ -	N/C	N/C
2006	\$ 1,503.81	\$ 2,123.50	\$ 1,503.81	\$ 2,123.50	-29%	-29%
2007	\$ 3,379.70	\$ 2,686.46	\$ 3,379.70	\$ 2,686.46	26%	26%
2008	\$ 111.31	\$ 5,897.98	\$ 111.31	\$ 5,897.98	-98%	-98%
2009	\$ 503.50	\$ 1,221.80	\$ 503.50	\$ 1,221.80	-59%	-59%
2010	\$ -	\$ -	\$ -	\$ -	N/C	N/C
2011	\$ 828.42	\$ 334.61	\$ 828.42	\$ 334.61	148%	148%
2012	\$ -	\$ -	\$ -	\$ -	N/C	N/C
2013	\$ 500.00	\$ -	\$ 500.00	\$ -	N/C	N/C
2014	\$ 24.11	\$ -	\$ 24.11	\$ -	N/C	N/C
2015	\$0.00	\$ -	\$0.00	\$ -	N/C	N/C
Totals	\$ 7,326.36	\$ 12,264.35	\$ 7,326.36	\$ 12,264.35	-40%	-40%
Routine Preventative Maintenance by Model Year	This Month	This Month Last Year	YTD	Last YTD	Change By Month	Change YTD
95-99	\$ -	\$ -	\$ -	Last YTD	N/C	#VALUE!
2000	\$ -	\$ -	\$ -	\$ -	N/C	N/C
2001	\$ 12.00	\$ -	\$ 12.00	\$ -	N/C	N/C
2002	\$ -	\$ -	\$ -	\$ -	N/C	N/C
2003	\$ -	\$ -	\$ -	\$ -	N/C	N/C
2004	\$ 20.00	\$ 40.00	\$ 20.00	\$ 40.00	-50%	-50%
2005	\$ -	\$ -	\$ -	\$ -	N/C	N/C
2006	\$ 20.00	\$ -	\$ 20.00	\$ -	N/C	N/C
2007	\$ 301.50	\$ 1,443.55	\$ 301.50	\$ 1,443.55	-79%	-79%
2008	\$ 351.50	\$ 1,181.40	\$ 351.50	\$ 1,181.40	-70%	-70%
2009	\$ 210.89	\$ 86.50	\$ 210.89	\$ 86.50	144%	144%
2010	\$ 994.57	\$ 530.76	\$ 994.57	\$ 530.76	87%	87%
2011	\$ 1,582.10	\$ -	\$ 1,582.10	\$ -	N/C	N/C
2012	\$ 1,236.48	\$ 1,385.28	\$ 1,236.48	\$ 1,385.28	-11%	-11%
2013	\$ -	\$ 60.00	\$ -	\$ 60.00	-100%	-100%
2014	\$ 40.00	\$ 40.00	\$ 40.00	\$ 40.00	0%	0%

MONTHLY REPORT JANUARY 2015

January 15, 2015

RECORDS

The Records Division is responsible for providing administrative and clerical support to the department. Major responsibilities include entering the accident and incident reports and tickets into the records database management

system, assisting the general public for report requests, performing criminal backgrounds, serving as a switchboard at times, performing validations, and setting up and managing the payment plans out of court.

RECORDS	This Month	This Month Last Year	YTD	Last YTD	Change By Month	Change YTD
Incident/Arrest Reports Processed	1186	1239	1186	1239	-4%	-4%
Accident Reports Processed	248	178	248	178	39%	39%
Citations Processed	2922	4251	2922	4251	-31%	-31%
Warnings Processed	1047	976	1047	976	7%	7%
Backgrounds	10	15	10	15	-33%	-33%
Fingerprints	106	0	106	0	N/C	N/C
Photos	0	0	0	0	N/C	N/C
Accident Requests	86	56	86	56	54%	54%
Accident Requests Online	196	130	196	130	51%	51%

PROFESSIONAL STANDARDS

The Office of Professional Standards, a unit within Administration, is charged with the compilation and updating of an extensive set of policies and procedures and providing a general operations guideline and code of conduct for officers to follow. In the event that a member of

the public does experience a negative interaction with an officer, mechanisms are in place for them to lodge a complaint. All complaints are reviewed and investigations completed in a timely manner.

Professional Standards	This Month	This Month Last Year	YTD	Last YTD	Change By Month	Change YTD
Opened (TOTAL)	4	5	4	5	-20%	-20%
Closed	4	5	4	5	-20%	-20%
Inquiries	3	4	3	4	-25%	-25%
Formal Investigations	1	1	1	1	0%	0%
Sustained	1	3	1	3	-67%	-67%
Not-Sustained	0	0	0	0	N/C	N/C
Exonerated	2	1	2	1	100%	100%
Unfounded	1	1	1	1	0%	0%

END OF REPORT

January 15, 2015



Contact Information

Brandon Perry, Crime Analyst | BA Criminology, BA Sociology, CPLE, TCLE | Office of Crime Analysis and Criminal Intelligence
Jonesboro Police Department | 1001 S. Caraway | Jonesboro, AR
bperry@jonesboro.org | Office: (870) 933-4614 ext. 2195
