
JPD Monthly Report

June 2010

Heather Clements,
Crime Analyst



Executive Summary

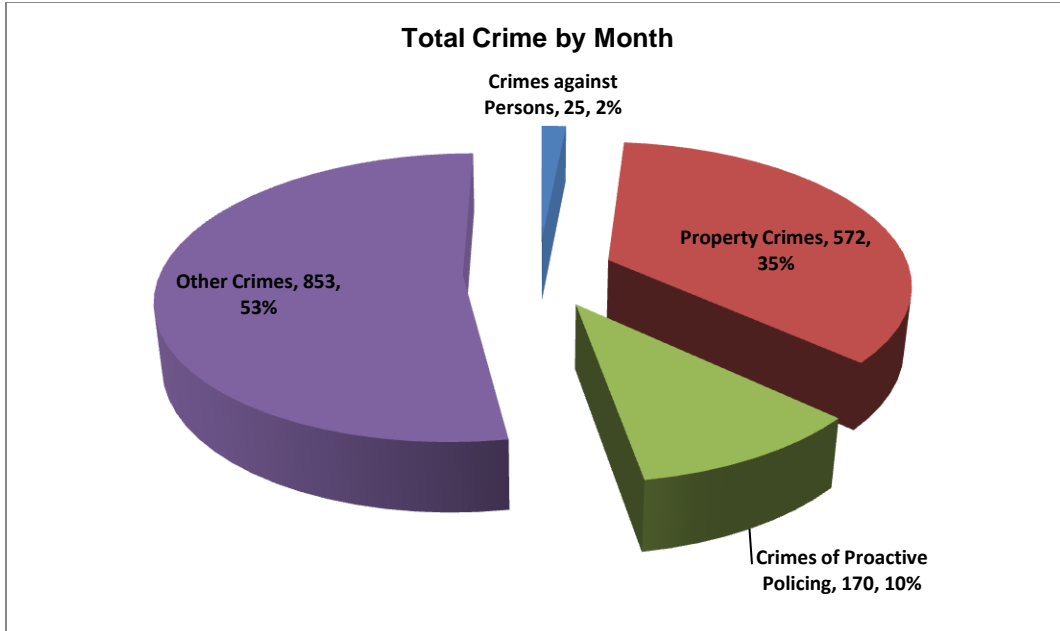
The purpose of the Jonesboro Police Department Monthly Report is to compile data into one integrated report for review, allowing for a seamless flow of information for better decision-making. After each department collates their monthly numbers and sends it to Crime Analysis, it is organized into sections of departmental data, analyzed and packaged, and finally disseminated to department heads, the Chief of Police, the City Mayor, and the City Council. Major sections include Crime Analysis, Emergency 911, Uniform Police Division, Prowl, Criminal Investigative Division, Warrants, Drug Task Force, Traffic, Parking Enforcement, Animal Control, Fleet Maintenance, Records, and Professional Standards.

Crime Analysis

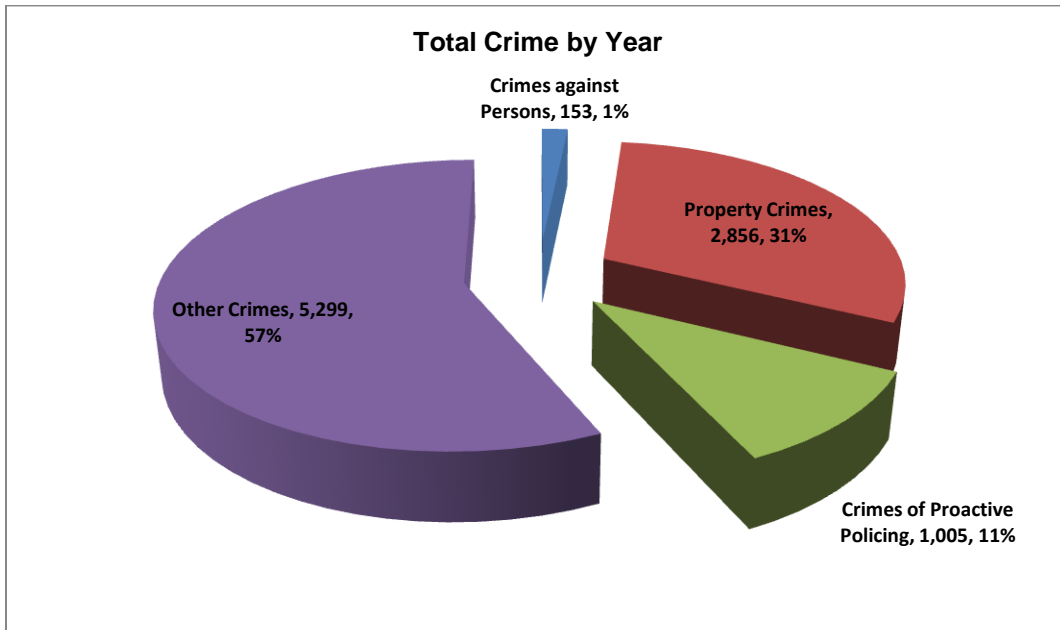
The Crime Analysis division consists of a Crime Analyst and an assistant. The Crime Analyst position is responsible for the analysis and dissemination of crime activity data and the collection and maintenance of crime intelligence information for the city of Jonesboro. Additionally, the Crime Analyst is charged with providing the department with current and accurate crime maps, presenting crime activity data to audiences of interest, and responding to requests for crime data from civilians and departmental staff. Data exported from this division is used by field agents for more effective, efficient policing, administration for improved staffing decisions, and the Mayor's office for community decision making and enhanced public relations. This section is broken down into total crime, crimes against persons, property crimes, crimes of proactive policing, other crimes, and arrest demographics.

Total Crime

The crime activity for this month is at a total of 1,620 offenses, up from 1,375 offenses last June, an 18% increase. Other crimes absorb the majority of this month's crime activity at 53% ($n = 853$). Property crimes fall in second place with 35% ($n = 572$). Following in third and fourth places are crimes of proactive policing at 10% ($n = 170$), and crimes against persons with only 2% ($n = 25$).



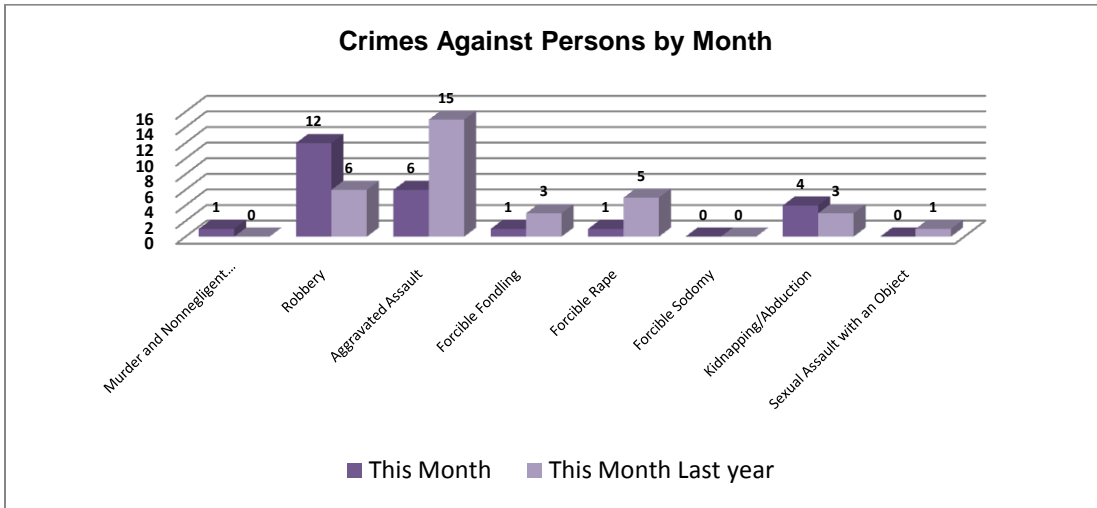
Year to date data includes January, February, March, April, May, and June data combined, of which there is a total of 9,313 offenses, up from 7,463 last June, a 25% increase. Again, other crimes has the highest percentage to total crimes at 57% ($n = 5,299$). Similar to this month's data, property crimes take second place at 31% ($n = 2,856$). Following are the crimes of proactive policing at 11% ($n = 1,005$) and crimes against persons at 1% ($n = 153$).



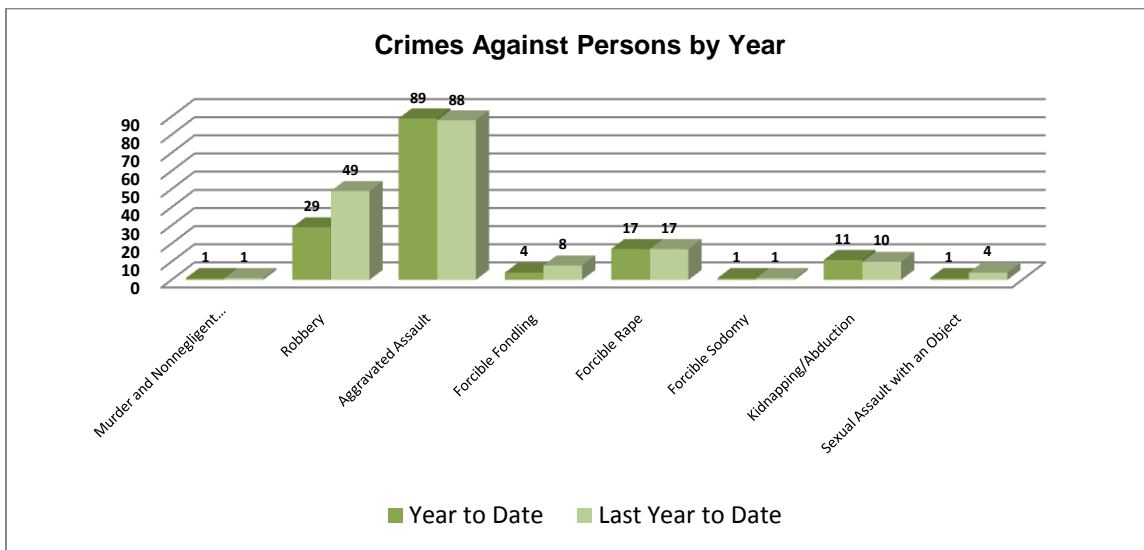
Crimes against Persons

There are 8 crimes that make up this section. There were a total of 25 offenses in this area this month, down from 33 last June, a 24% decrease. The following chart demonstrates this month's

activity compared to June of last year’s activity in all 8 areas. Significantly lower are the aggravated assaults down to 6 from 15, a 60% decrease. Rapes decreased by 4, an 80% decrease. Robberies doubled from 6 to 12, a 100% increase.



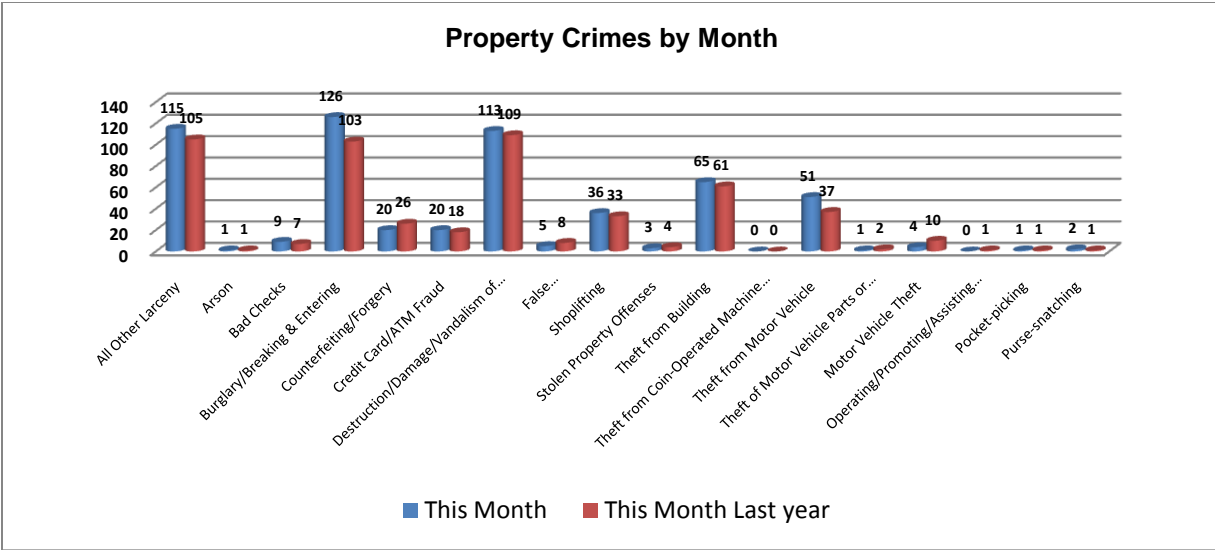
Below is a bar graph indicating the year to date data for crimes against persons. Total number of year to date crimes against persons is 153, down from 178 last June, a 14% decrease. Robberies are down 41% from this time last year. There are very few significant changes in other areas.



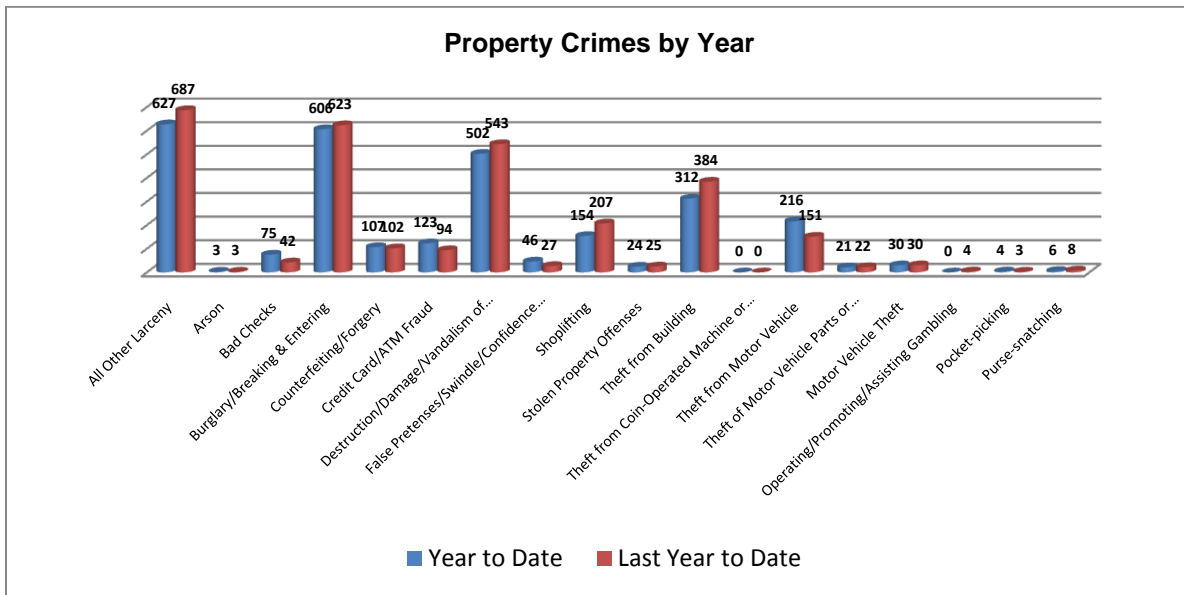
*Arkansas State University had 1 murder on campus in April, but this statistic is reported by ASU and not the City of Jonesboro.

Property Crimes

This section displays the criminal activity for 18 crimes, all against property. This month, there were a total of 572 property crimes, a 9% increase from 527 last June. Counterfeiting and motor vehicle theft offenses are down, but larceny, burglary, and theft from motor vehicle offenses are up.



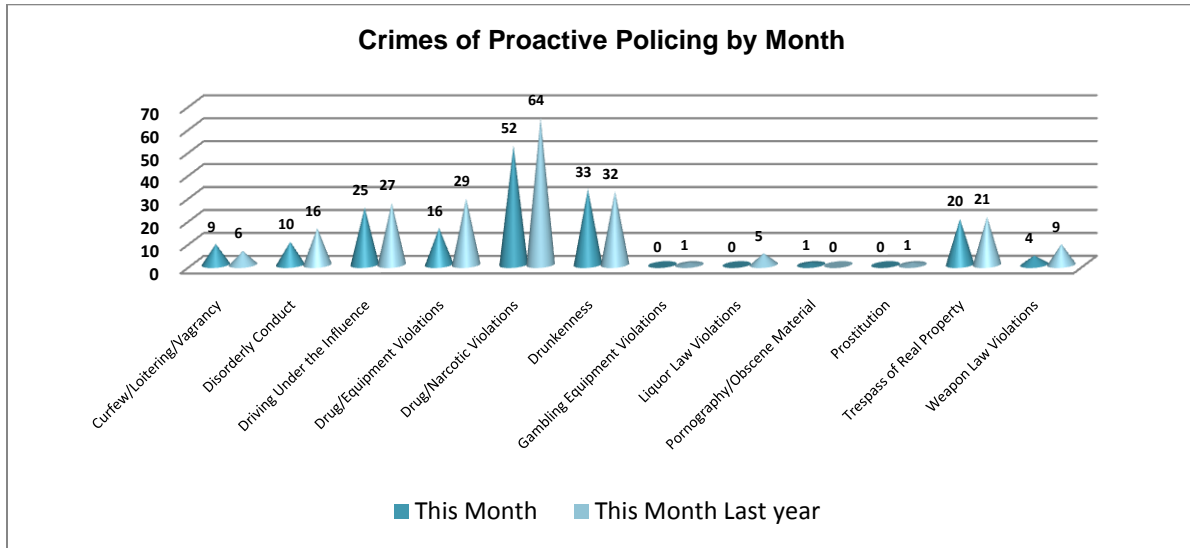
To date this year, 2,856 property offenses have occurred, down from 2,955 last year at this same time. This is a 3% decrease in property crimes from this time last year. By reviewing the chart below, it is noticeable that larceny, burglary, vandalism, shoplifting, and theft from buildings are much lower than this time last year. However, credit card fraud, swindling, and theft from motor vehicles are higher than this time last year.



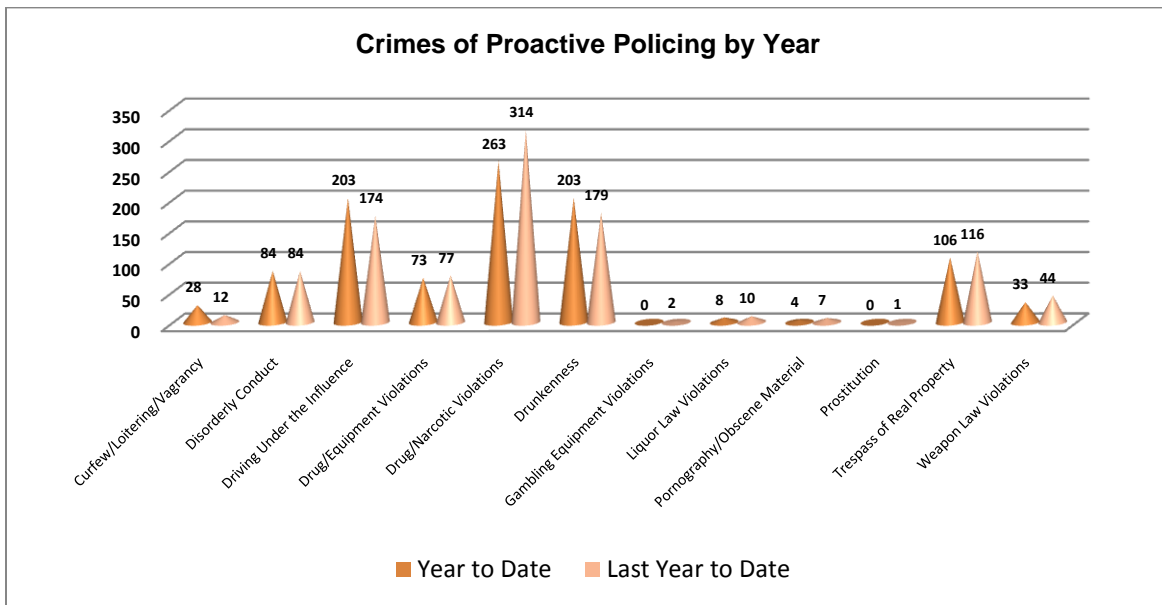
Crimes of Proactive Policing

Crimes of proactive policing are those crimes that result from police officers actively policing the streets to combat certain types of street crime. Twelve crimes fall under this category. A total of 170 offenses have occurred this month, a 19% decrease from last June ($n = 211$). A significant decrease is in drug/equipment violations (down 45%), drug/narcotic violations (down 19%),

liquor law violations are down to 0 from 5, and weapon law violations are down by 5 (down 56%).

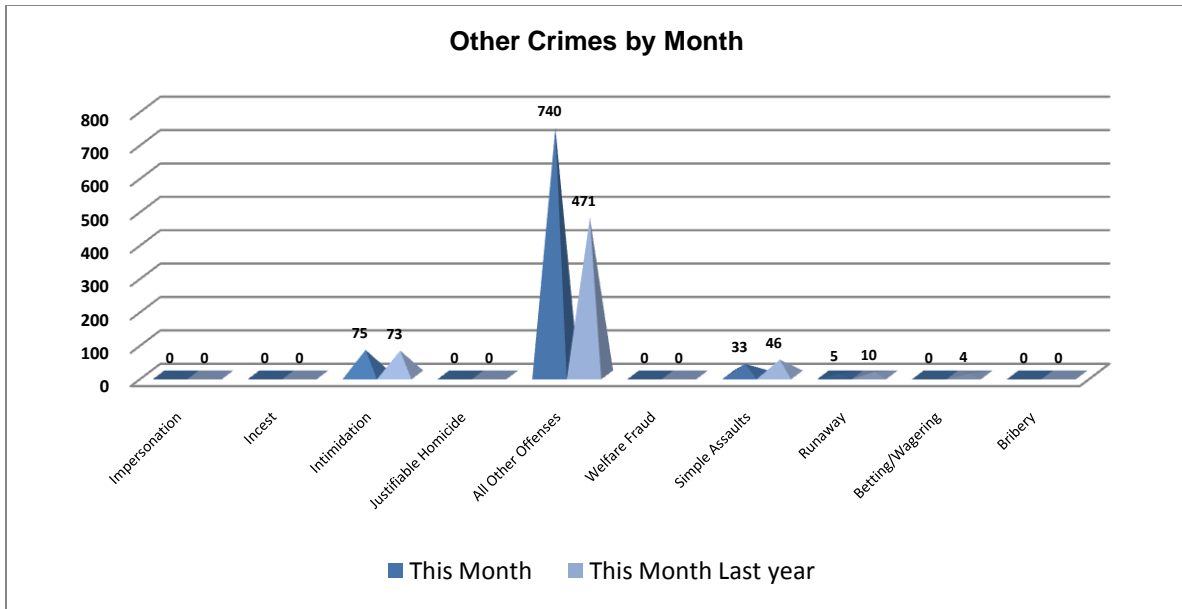


To date for the year, there have been 1,005 crimes of proactive policing. This is up down from 1,020 last June, only a 1% decrease. Significant increases are DUIs (17%) and drunkenness (13%). Two significant decreases are drug/narcotic violations (16%) and weapon law violations (25%).

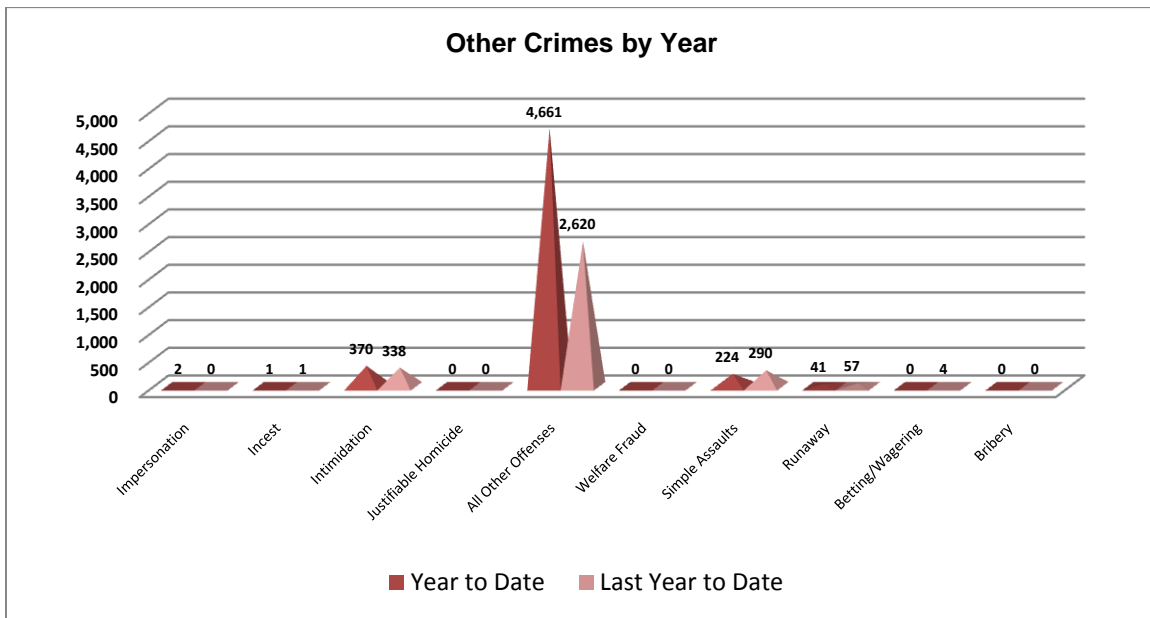


Other Crimes

There are 10 crimes that fall into the other crimes category. This month, there have been a total of 853 other crimes up from 604 last June, a 41% increase. All other offenses are significantly higher than last June by 57%. One noticeable decrease is a 28% decrease in simple assaults.

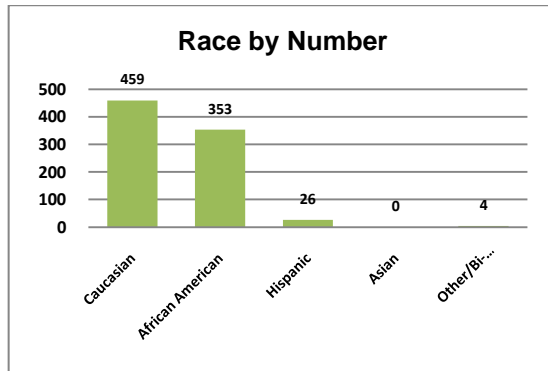
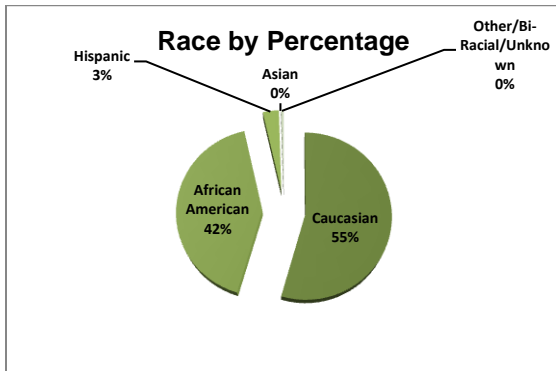
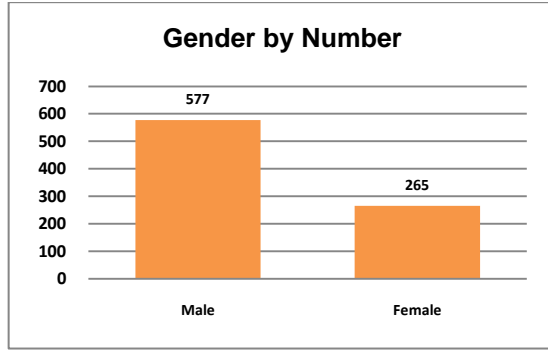
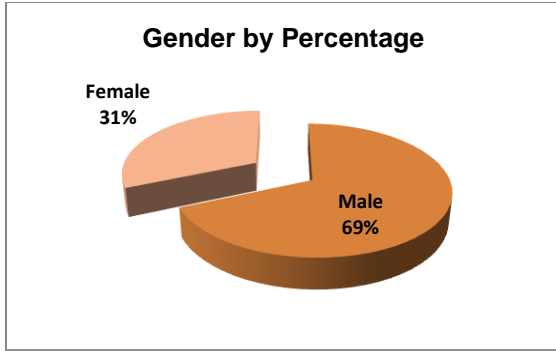


To date this year, there have been 5,299 other crimes, up from 3,310 last June, a 60% increase. The largest increase occurred, similar to above, in the all other offenses area ($n = 4,661$), which accounts for a 78% increase. Another increase includes intimidation by 9%. Simple assaults decreased by 23% and runaways decreased by 28%.

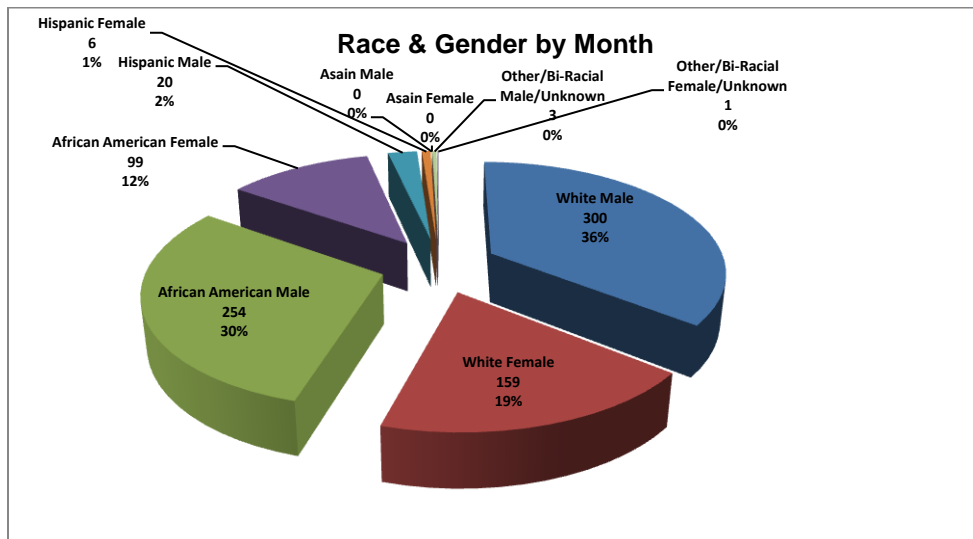


Arrest Demographics

This section will break down race and gender for the 842 arrests this month. The majority of offenders have been male ($n=577$), as opposed to female ($n=265$) and Caucasian ($n=459$) and African American ($n=353$) as opposed to Hispanic ($n=26$), Asian ($n=0$), or other/unknown/bi-racial ($n=4$).



Caucasian males make up the majority of offenders for the month of June, totaling 36% ($n = 300$). African American males account for 30% ($n = 254$) of the offenders this month. Caucasian females make up 19% ($n = 159$) and African American females make up 12% ($n = 99$). The remaining 3% is made up of Hispanic males and females. This distribution can be reviewed in the pie chart below.



*Although the chart indicates a 0% for Unknown/bi-racial/other ($n = 3$) arrestees, the percentage is so small that excel rounds it to 0%.

Emergency 911

Also known as Public Safety Answering Point (PSAP), the Emergency 911 Division is responsible for answering all calls from public for emergency assistance, accessing the needed information to best assist, and then assigning the most efficient and effective emergency response. In addition, this division is responsible for setting priority call dispatching to field units including Police, Fire, and EMS. Emergency 911 also maintains all records for radio logs, calls for service, and other emergency service data collections.

Calls by Type	This Month	This Month Last Year	YTD	Last YTD	Change By Month	Change YTD
Land Line	914	1,054	5,140	6,214	-13%	-17%
Cell Phone	3,429	3,918	19,260	21,110	-12%	-9%
Admin Lines	15,985	17,099	90,059	102,522	-7%	-12%
TOTALS	20,328	22,071	114,459	129,846	-8%	-12%

Calls by Agency	This Month	This Month Last Year	YTD	Last YTD	Change By Month	Change YTD
Jonesboro PD Calls	6,356	8,838	36,470	47,784	-28%	-24%
Craighead Cty Sheriff	1,159	1,203	6,047	8,015	-4%	-25%
Jonesboro Fire Dpt - dispatch	137	157	855	918	-13%	-7%
Jonesboro Fire Dpt - Med Asst	116	121	696	1,481	-4%	-53%
Craighead Cty - Fire	43	52	326	403	-17%	-19%
Craighead Cty - 1st Responder	88	97	401	488	-9%	-18%
Emerson Ambulance	234	257	1,421	1,347	-9%	5%
Medic One	283	315	1,722	1,771	-10%	-3%
Air Evac	1	1	8	4	0%	100%
Coroner	5	3	18	13	67%	38%
ARK State Police	14	8	85	55	75%	55%
Jonesboro Animal Control	75	15	393	67	400%	487%
Wreckers Called	174	260	1,051	1,202	-33%	-13%
TOTALS	8,685	11,327	49,493	63,548	-23%	-22%

Calls by Municipality	This Month	This Month Last Year	YTD	Last YTD	Change By Month	Change YTD
Bay PD	107	139	650	1001	-23%	-35%
Bono PD	202	188	1200	1371	7%	-12%
Brookland PD	222	271	1287	1550	-18%	-17%
Caraway PD	82	54	583	311	52%	87%
Cash PD	32	13	357	324	146%	10%
Egypt PD	26	23	106	159	13%	-33%
Lake City PD	129	162	748	716	-20%	4%
Monette PD	158	154	801	687	3%	17%
TOTALS	958	1,004	5,732	6,119	-5%	-6%

Uniform Patrol Division

The UPD is responsible for responding to calls into the Emergency – 911 Division by civilians and are normally the first responders. Jonesboro is divided into 6 patrol districts. Officers from UPD are assigned to a district and work the same district every shift. In addition, when a Traffic Officer is not available, a UPD Officer will respond to traffic accidents and assist in directing traffic when necessary.

Incidents	This Month	This Month Last Year	YTD	Last YTD	Change By Month	Change YTD
Street Accidents	76	92	648	878	-17%	-26%
Private Property Accidents	42	51	295	372	-18%	-21%
Traffic Citations	877	502	4,078	3,241	75%	26%
DWI	17	8	128	178	113%	-28%
Mis. Arrests	1,683	1,058	8,869	7,419	59%	20%
Felony Arrests	124	130	818	810	-5%	1%
Public Intoxication Arrests	9	5	57	79	80%	-28%
Calls For Service	7,252	5,266	41,547	39,669	38%	5%
Alarms	235	194	1,342	1,430	21%	-6%
Parking Citations	0	2	7	16	-100%	-56%
Written Warnings	1,457	298	3,909	2,671	389%	46%
TOTALS	11,772	7,606	61,698	56,763	55%	9%
Patrol Miles	52,185	45,283	362,611	334,141	15%	9%
Hours Worked	9,466	6,929	58,172	52,151	37%	12%

Prowl

The Prowl unit is a uniformed street crimes unit specializing in criminal patrol, narcotics enforcement, gang investigation, and prostitution activity. The unit conducts directed patrols, investigates citizen complaints of street-level criminal activity, and directly assists the 2nd Judicial Drug Task Force. PROWL also assists any division within the Jonesboro Police Department at any time when needed.

Incidents	This Month	This Month Last Year	YTD	Last YTD	Change By Month	Change YTD
Street Accidents	0	0	0	1	N/C	-100%
Private Property Accidents	0	0	1	0	N/C	N/C
Traffic Citations	45	31	204	126	45%	62%
DWI	0	0	1	1	N/C	0%
Mis. Arrests	127	209	587	723	-39%	-19%
Felony Arrests	29	50	152	239	-42%	-36%
Drug Arrests	33	39	154	213	-15%	-28%
Public Intoxication Arrests	0	0	0	0	N/C	N/C
Calls For Service	109	102	601	342	7%	76%
Alarms	0	0	0	0	N/C	N/C
Parking Citations	0	0	0	0	N/C	N/C
Written Warnings	28	58	161	120	-52%	34%
Assists	0	0	0	0	N/C	N/C
TOTALS	371	489	1,861	1,765	-24%	5%
Value of Drugs Seized	\$10,950	\$20,549	\$45,573	\$89,068	-47%	-49%
Value of Assets Seized	16,088	25,041	34,416	58,663	-36%	-41%
Patrol Miles	4,900	8,400	30,750	31,280	-42%	-2%

Criminal Investigative Division

The CID is responsible for conducting follow-up investigations into criminal acts reported to the Jonesboro Police Department. The primary goal is to collect and present evidence that conclusively leads to a successful arrest. Additionally, CID is charged with clearing additional crimes, recovering stolen property, preventing additional crimes, and gathering intelligence information.

Investigations	This Month	This Month Last Year	YTD	Last YTD	Change By Month	Change YTD
Criminal Investigations Assigned	99	88	493	598	13%	-18%
Criminal Investigations Closed	63	71	492	479	-11%	3%
Cleared by Arrests	36	40	271	249	-10%	9%
Unfounded	5	2	47	61	150%	-23%
Exceptionally Cleared	15	18	82	108	-17%	-24%
Filed With Prosecutors Office	4	6	47	30	-33%	57%
TOTALS	222	225	1432	1525	-1%	-6%

Crimes Against Persons	This Month	This Month Last Year	YTD	Last YTD	Change By Month	Change YTD
Criminal Investigations Assigned	17	24	109	140	-29%	-22%
Criminal Investigations Closed	13	24	117	132	-46%	-11%
Cleared by Arrests	9	17	79	84	-47%	-6%
Unfounded	1	0	5	15	N/C	-67%
Exceptionally Cleared	1	6	24	29	-83%	-17%
Filed With Prosecutors Office	2	1	9	4	100%	125%
TOTALS	43	72	343	404	-40%	-15%

Property Crimes	This Month	This Month Last Year	YTD	Last YTD	Change By Month	Change YTD
Criminal Investigations Assigned	78	58	341	398	34%	-14%
Criminal Investigations Closed	45	39	299	283	15%	6%
Cleared by Arrests	25	23	178	158	9%	13%
Unfounded	4	2	34	39	100%	-13%
Exceptionally Cleared	14	10	55	68	40%	-19%
Filed With Prosecutors Office	2	4	32	18	-50%	78%
TOTALS	168	136	939	964	24%	-3%

Crimes Against Children	This Month	This Month Last Year	YTD	Last YTD	Change By Month	Change YTD
Criminal Investigations Assigned	4	2	28	29	100%	-3%
Criminal Investigations Closed	2	3	31	29	-33%	7%
Cleared by Arrests	2	0	14	8	N/C	75%
Unfounded	0	0	8	7	N/C	14%
Exceptionally Cleared	0	2	3	6	-100%	-50%
Filed With Prosecutors Office	0	1	6	8	-100%	-25%
TOTALS	8	8	90	87	0%	3%

Warrants

The Warrants Division is responsible for serving warrants, criminal summonses, and subpoenas that are issued by the District Court. On city court days, the Warrants Division provides a bailiff for court and a transport officer. In addition, this Division is responsible for transporting wanted persons arrested in other jurisdictions back to Jonesboro. The STEP program operates within this

division and is a grant-funded operation in which officers can get paid overtime to enforce the safety belt law.

The Warrants Division collected a total of \$19,833.18. A total of 2,856 warrants were issued, 2,121 were served, and 1,114 were quashed.

Arrests	This Month	This Month Last Year	YTD	Last YTD	Change By Month	Change YTD
Misdemeanor	1045	735	6306	4552	42%	39%
Felony			5	3	N/C	67%
Total Arrests	1045	735	6311	4555	42%	39%

Warrants by Activity	This Month	This Month Last Year	YTD	Last YTD	Change By Month	Change YTD
Subpoenas	264	536	2596	2964	-51%	-12%
Commitments	1	5	24	22	-80%	9%
Traffic Citations	1		14	2	N/C	600%
Complaints		6		8	-100%	-100%
Assist					N/C	N/C
Alarms		1		1	-100%	-100%

Hours by Activity	This Month	This Month Last Year	YTD	Last YTD	Change By Month	Change YTD
SI Criminal	172.5	144	1217.09	885.12	20%	38%
Court	134.5	99.92	779.33	450.92	35%	73%
Prisoner Transport	46.5	92.17	182.51	665.17	-50%	-73%

Hours Worked	This Month	This Month Last Year	YTD	Last YTD	Change By Month	Change YTD
Regular Hours Worked	614	525	3622.5	3397.5	17%	7%
Overtime Hours Worked	7.5	18.75	28.25	89.75	-60%	-69%
TOTAL Hours Worked	621.5	543.75	3650.75	3487.25	14%	5%

Mileage	This Month	This Month Last Year	YTD	Last YTD	Change By Month	Change YTD
Total Mileage	2934	2054	17691	14647	43%	21%

STEP	This Month	This Month Last Year	YTD	Last YTD	Change By Month	Change YTD
DWI Arrest			3		N/C	N/C
DUI Arrest					N/C	N/C
Traffic Citations	129	172	942	674	-25%	40%
Felony Arrests					N/C	N/C
Drug Arrests		1		1	-100%	-100%
Hours Worked	56.5	182	861	744.75	-69%	16%
Miles Driven	381	1014	7018	5594	-62%	25%

Drug Task Force

The DTF is responsible for investigating major drug traffickers in the area, including all types of illegal drugs. They work closely with local, state, and federal agencies to eradicate drugs from the community.

INVESTIGATIONS	This Month	This Month Last Year	YTD	Last YTD	Change By Month	Change YTD
Opened	38	27	184	185	41%	-1%
Closed	28	26	143	170	8%	-16%
TOTAL	38	29	203	207	31%	-2%

With Nexus to Jonesboro	This Month	This Month Last Year	YTD	Last YTD	Change By Month	Change YTD
Opened	29	26	154	193	12%	-20%
Closed		0		0	N/C	N/C
TOTAL	29	26	154	193	12%	-20%

Outside Jonesboro (No Known Nexus)	This Month	This Month Last Year	YTD	Last YTD	Change By Month	Change YTD
Opened	1	1	13	6	0%	117%
Closed	0	0		0	N/C	N/C
TOTAL	1	1	13	6	0%	117%

ASSISTANCE RENDERED	This Month	This Month Last Year	YTD	Last YTD	Change By Month	Change YTD
Assist to Outside Agencies	2	6	24	23	-67%	4%
Assist to Jonesboro UPD/CID	23	26	96	117	-12%	-18%

ARRESTS	This Month	This Month Last Year	YTD	Last YTD	Change By Month	Change YTD
Miscellaneous	4	8	35	58	-50%	-40%
Felony	49	31	242	218	58%	11%
Marijuana	7	3	42	41	133%	2%
Cocaine	0	2	11	9	-100%	22%
Crack Cocaine	9	1	31	22	800%	41%
Methamphetamine/ICE	18	6	64	45	200%	42%
LSD	0	0	0	0	N/C	N/C
Extasy (MDMA or Other Designer Drug)	3	0	4	4	N/C	0%
Prescription	3	1	14	20	200%	-30%
Opiates (Heroin,Opium)	0	4	0	8	-100%	-100%
Labs	0	4	15	18	-100%	-17%
All Other Drug Offenses	0	0	0	1	N/C	-100%

ASSET FORFEITURE	This Month	This Month Last Year	YTD	Last YTD	Change By Month	Change YTD
Vehicles Seized(No.)	3	0	4	4	N/C	0%
Value of Assets Seized(Includes Value of vehicles)	\$23,400	\$21,232	\$37,757	\$46,337	10%	-19%
Asset Value Awarded to Jonesboro PD (State)		\$0	\$0	\$0	N/C	N/C
Asset Value Awarded to Jonesboro PD (Federal)		\$0	\$0	\$0	N/C	N/C
Asset Value Awarded to Jonesboro PD (Total)		\$0	\$0	\$0	N/C	N/C

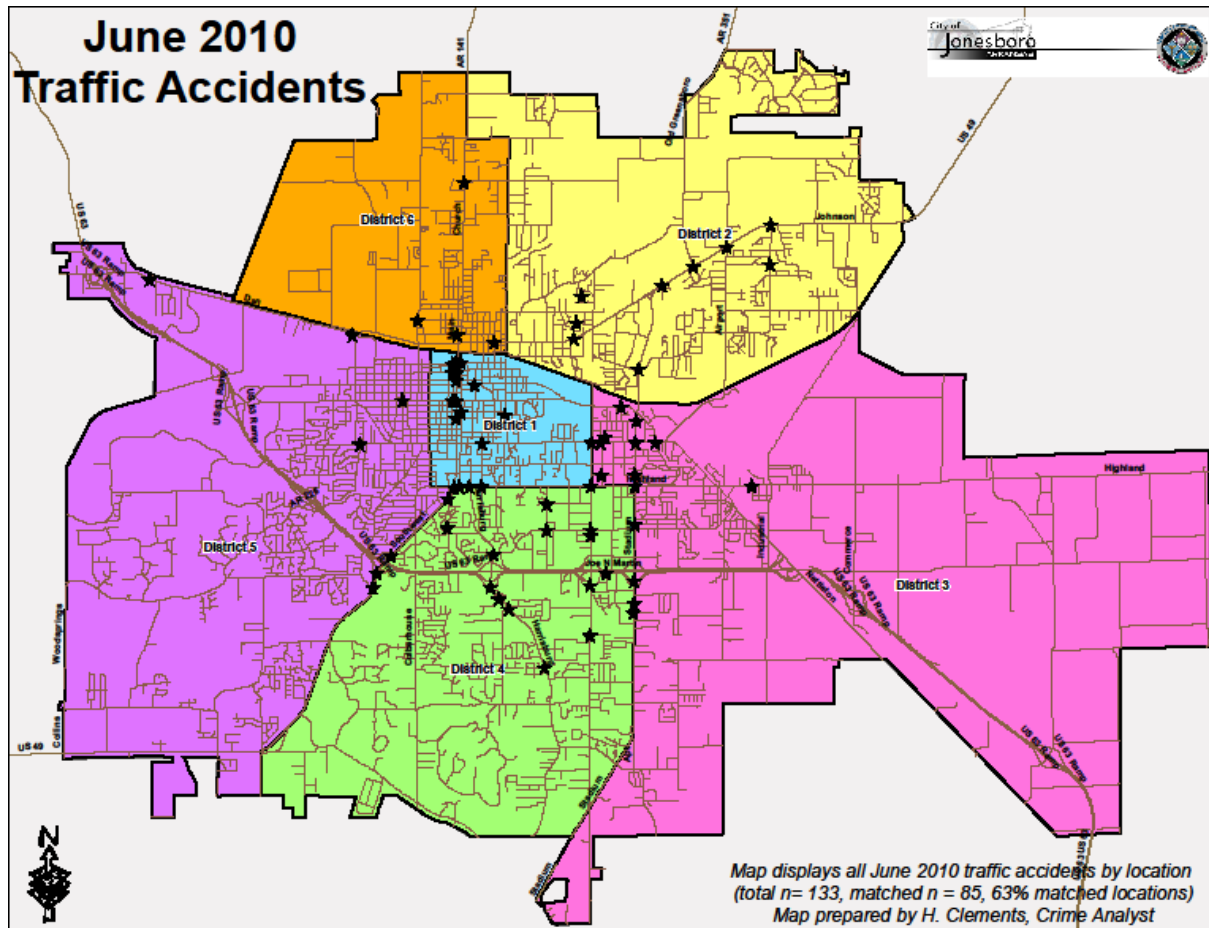
ARRESTS DEMOGRAPHY	This Month	This Month Last Year	YTD	Last YTD	Change By Month	Change YTD
White	21	19	92	112	11%	-18%
African American	6	7	49	65	-14%	-25%
Latino	5	3	15	14	67%	7%
Asain	0	0	1	0	N/C	N/C
Other/Bi-Racial	0	0	0	0	N/C	N/C
Male	20	20	123	129	0%	-5%
Female	13	10	29	44	30%	-34%
White Male	12	12	69	70	0%	-1%
White Female	12	8	26	33	50%	-21%
African American Male	6	5	49	50	20%	-2%
African American Female	0	2	2	15	-100%	-87%
Latino Male	4	3	13	11	33%	18%
Latino Female	1	0	1	3	N/C	-67%
Asain Male	0	0	1	0	N/C	N/C
Asain Female	0	0	0	0	N/C	N/C
Other/Bi-Racial Male	0	0	0	0	N/C	N/C
Other/Bi-Racial Female	0	0	0	0	N/C	N/C

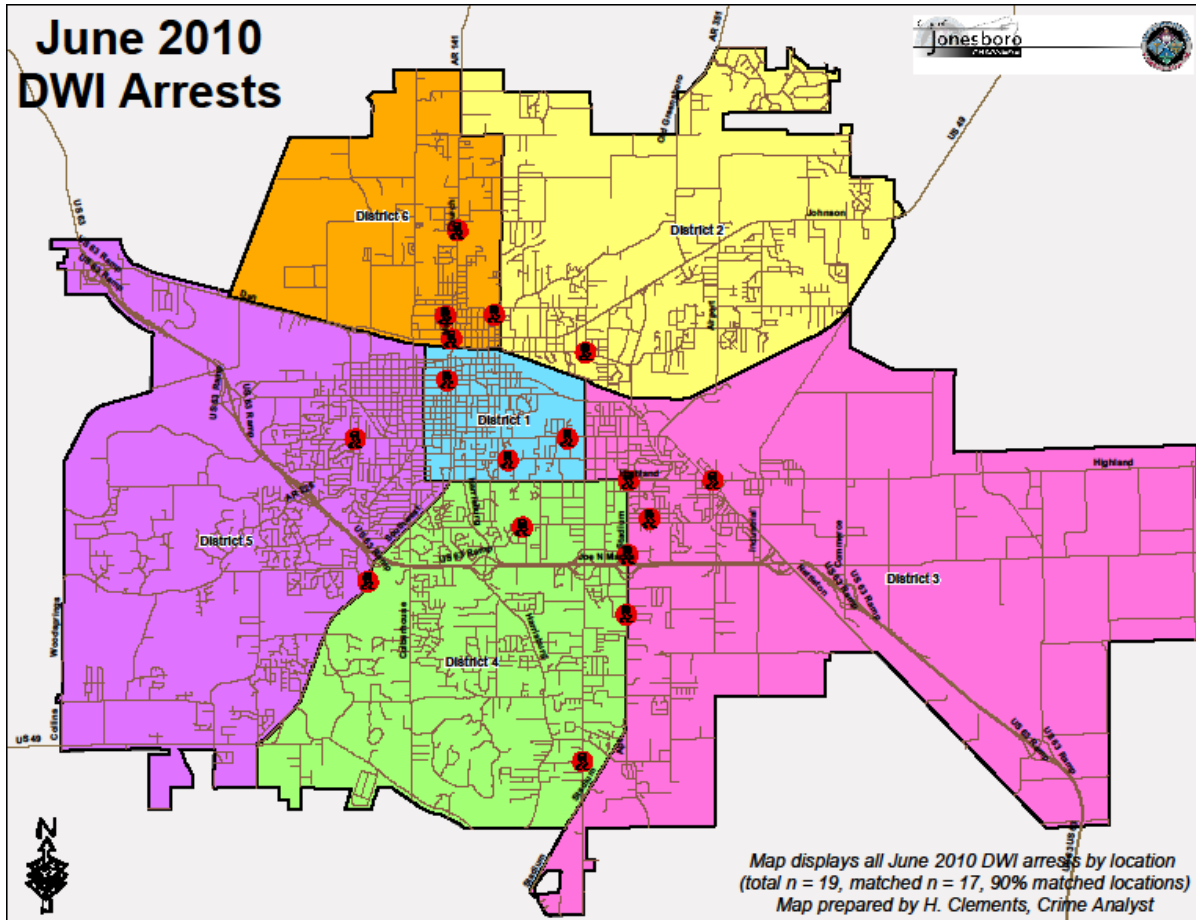
Traffic

Comprised of three motor units and three Chargers, the Traffic Enforcement Unit responds to traffic accidents and provides increased enforcement in particularly challenging areas. This unit also provides extra coverage for specific congestion problems and special events in the

community. Last, they work details targeting specific issues, such as DWI enforcement and traffic safety checkpoints.

Incidents	This Month	This Month Last Year	YTD	Last YTD	Change By Month	Change YTD
Street Accidents	133	107	762	697	24%	9%
Private Property Accidents	52	34	226	236	53%	-4%
Traffic Citations	189	186	1741	1517	2%	15%
DWI	2	5	24	24	-60%	0%
Mis. Arrests	19	28	117	147	-32%	-20%
Felony Arrests	0	0	12	7	N/C	71%
Drug Arrests	0	0	0	0	N/C	N/C
Public Intoxication Arrests	0	0	2	0	N/C	N/C
Calls For Service	291	205	1632	1357	42%	20%
Alarms	4	0	8	13	N/C	-38%
Parking Citations	0	0	0	26	N/C	-100%
Written Warnings	220	3	688	13	7233%	5192%
TOTALS	910	568	5212	4037	60%	29%
Value of Asstes Seized	\$0	\$0	\$0	\$0	N/C	N/C
Patrol Miles	6,074	4,674	33,765	29,267	30%	15%
Hours Worked	891	682.5	4783	4687	31%	2%





Parking Enforcement

The Parking Enforcement Division is responsible for enforcing parking laws in the downtown area. This service provides a safe and convenient parking situation for the public.

CITATIONS ISSUED	This Month	This Month Last Year	YTD	Last YTD	Change By Month	Change YTD
Citations	44	74	302	449	-41%	-33%
Verbal Warnings	0	0	0	0	N/C	N/C

MINUTES BY ACTIVITY	This Month	This Month Last Year	YTD	Last YTD	Change By Month	Change YTD
Office	890	1,295	4,880	5,936	-31%	-18%
Admin(Non-Office)	590	1,155	3,165	5,445	-49%	-42%
Community	0	305	0	300	-100%	-100%
Training	0	0	0	0	N/C	N/C
Patrol	6,190	5,945	22,955	11,370	4%	102%

Animal Control

The Animal Control Division is responsible for educating the public on safe and humane issues regarding animal treatment, enforcing all animal laws and ordinances, assisting the public in resolving animal issues, and protecting the safety and welfare of the citizens and animals in this community.

Incidents	This Month	This Month Last Year	YTD	Last YTD	Change By Month	Change YTD
Barking Complaints	6	9	51	40	-33%	28%
Bite Reports	19	15	54	57	27%	-5%
Door Hangers	29	40	217	154	-28%	41%
Welfare Checks	88	93	505	370	-5%	36%
Advised of Rights	406	305	1,636	1,504	33%	9%
Incident Reports	12	10	45	49	20%	-8%
Gone on Arrival	52	93	252	331	-44%	-24%
Complaints	677	866	4,111	3,377	-22%	22%
Desk Complaints	988	931	5,711	4,565	6%	25%
Captured Dogs	124	171	792	701	-27%	13%
Captured Cats	21	21	79	67	0%	18%
Captured Wildlife	65	24	196	101	171%	94%
Chemical Captures	6	6	40	52	0%	-23%
Traps	34	22	123	88	55%	40%
Deceased Animals	47	102	458	589	-54%	-22%
Assist J.P.D.	8	12	49	19	-33%	158%
Assist C.S.O.	0	0	0	6	N/C	-100%
Public Relations	688	170	3,605	979	305%	268%
CITATIONS ISSUED	53	26	260	134	104%	94%
WARNINGS ISSUED	36	36	272	115	0%	137%
Physical Arrests	0	1	2	8	-100%	-75%
City Warrants Served	6	2	12	12	200%	0%
County Warrants Served	0	0	0	0	N/C	N/C
Euthanized	74	100	350	405	-26%	-14%
Euthanized for Humane Society	0	0	0	71	N/C	-100%
Deceased Animals Landfill lbs.	6,020	6,480	25,840	30,640	-7%	-16%
Wildlife Euthanized	65	24	196	101	171%	94%
Sent to Rescue Centers	11	6	88	75	83%	17%
Adoptions	33	32	224	107	3%	109%
Miles Driven	9,067	8,567	51,196	58,206	6%	-12%

Fleet Maintenance

The Fleet Maintenance is responsible for all of the police vehicle maintenance upkeep, cleanliness, and purchasing. In addition, this Division handles most of the purchasing of equipment, supplies, and uniforms for all of the Police Department.

Repair Costs by Model Year	This Month	This Month Last Year	YTD	Last YTD	Change By Month	Change YTD
95-99	\$0.00	\$0.00	\$583.68	\$69.77	N/C	737%
2000	\$0.00	\$110.73	\$195.02	\$1,253.62	-100%	-84%
2001	\$0.00	\$37.80	\$312.03	\$37.80	-100%	725%
2002	\$0.00	\$0.00	\$2,054.11	\$0.00	N/C	N/C
2003	\$37.80	\$0.00	\$49.03	\$139.14	N/C	-65%
2004	\$1,190.68	\$349.37	\$6,472.37	\$3,002.81	241%	116%
2005	\$1,786.76	\$335.38	\$6,761.27	\$2,210.82	433%	206%
2006	\$4,063.33	\$3,846.54	\$20,836.23	\$8,866.53	6%	135%
2007	\$1,765.39	\$631.43	\$6,994.67	\$1,953.28	180%	258%
2008	\$11.23	\$0.00	\$1,397.19	\$169.75	N/C	723%
2009	\$22.46	\$6,100.11	\$325.72	\$6,137.91	N/C	N/C
2010	\$0.00	n/a	\$0.00	n/a	N/C	N/C
TOTALS	\$8,877.65	\$11,411.36	\$45,981.32	\$23,841.43	-22%	93%

Routine Preventative Maintenance by Model Year	This Month	This Month Last Year	YTD	Last YTD	Change By Month	Change YTD
95-99	\$0.00	\$0.00	\$53.50	\$153.27	N/C	-65%
2000	\$0.00	\$0.00	\$29.00	\$211.30	N/C	-86%
2001	\$0.00	\$0.00	\$40.00	\$1,046.96	N/C	-96%
2002	\$20.00	\$0.00	\$20.00	\$0.00	N/C	N/C
2003	\$65.00	\$60.00	\$300.37	\$809.25	8%	-63%
2004	\$167.50	\$564.28	\$3,229.05	\$2,601.47	-70%	24%
2005	\$198.00	\$221.27	\$2,116.26	\$3,166.83	-11%	-33%
2006	\$1,226.48	\$1,704.07	\$7,936.64	\$8,197.71	-28%	-3%
2007	\$347.32	\$791.55	\$6,747.56	\$3,959.38	-56%	70%
2008	\$124.50	\$145.00	\$1,501.16	\$398.00	-14%	277%
2009	\$591.24	\$854.79	\$895.25	\$1,805.86	N/C	N/C
2010	\$499.20	n/a	\$1,168.10	n/a	N/C	N/C
TOTALS	\$3,239.24	\$4,340.96	\$24,036.89	\$22,350.03	-25%	8%

Records

The Records Division is responsible for providing administrative and clerical support to the department. Major responsibilities include entering the accident and incident reports and tickets into the records database management system, assisting the general public for report requests, performing criminal backgrounds, serving as a switchboard at times, performing validations, and setting up and managing the payment plans out of court.

RECORDS	This Month	This Month Last Year	YTD	Last YTD	Change By Month	Change YTD
Incident/Arrest Reports Processed	1,286	1,029	7,307	6,008	25%	22%
Accident Reports Processed	206	199	1,391	1,346	4%	3%
Citations Processed	3,791	3,471	24,684	19,815	9%	25%
Warnings Processed	967	292	3,374	1,896	231%	78%
Backgrounds	22	9	104	36	144%	189%
Fingerprints	62	88	531	607	-30%	-13%
Photos	4	0	11	5	N/C	120%
Accident Requests	109	131	627	716	-17%	-12%
Accident Requests Online	171	165	924	935	4%	-1%
TOTALS	6,618	5,384	38,953	31,364	23%	24%

Professional Standards

The Office of Professional Standards, a unit within Administration, is charged with the compilation and updating of an extensive set of policies and procedures and providing a general

operations guideline and code of conduct for officers to follow. In the event that a member of the public does experience a negative interaction with an officer, mechanisms are in place for them to lodge a complaint. All complaints are reviewed and investigations completed in a timely manner.

	This Month	This Month Last Year	YTD	Last YTD	Change By Month	Change YTD
Opened (TOTAL)	5	3	38	66	67%	-42%
Closed	7	3	38	66	133%	-42%
Inquiries	5	3	34	61	67%	-44%
Formal Investigations	0	0	2	5	N/C	-60%
Sustained	5	2	28	45	150%	-38%
Not-Sustained	0	1	3	5	-100%	-40%
Exhonerated	0	0	1	7	N/C	-86%
Unfounded	0	0	3	9	N/C	-67%