

JONESBORO POLICE DEPARTMENT

Monthly Report

NOVEMBER 2014

IN THIS REPORT

CRIME ANALYSIS	1
Total Crime	2
Crimes against Person	4
Property Crimes	5
Crimes of Proactive Policing	6
Other Crimes.....	7
Arrests Demographics	8
EMERGENCY 911	9
UPD	10
PROWL	10
CID	11
WARRANTS	11
DRUG TASK FORCE	12
TRAFFIC	13
Maps	14
ANIMAL CONTROL	15
FLEET MAINTENANCE 16	
RECORDS	17
PROFESSIONAL	
STANDARDS	17

The purpose of the Jonesboro Police Department Monthly Report is to compile data into one integrated report for review, allowing for a seamless flow of information for better decision-making. After each department collates their monthly numbers and sends it to the Office of Crime Analysis, it is organized into sections of departmental data, analyzed and packaged, and finally disseminated to department heads, the Chief of Police, the City Mayor, and the City Council. Major sections include Crime Analysis, Emergency 911, Uniform Police Division, Prowl, Criminal Investigative Division, Warrants, Drug Task Force, Traffic, Animal Control, Fleet Maintenance, Records, and Professional Standards.

CRIME ANALYSIS

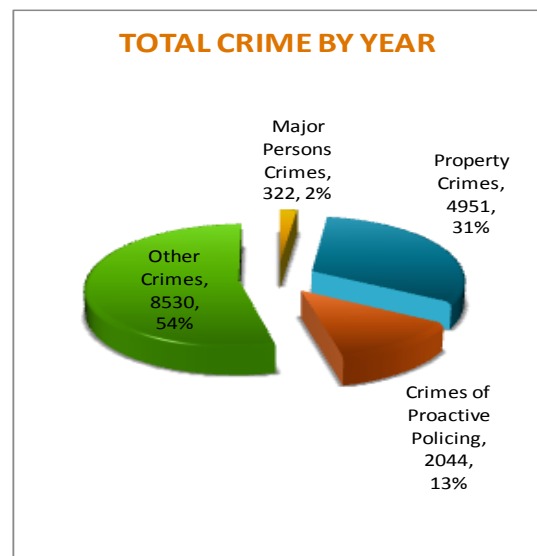
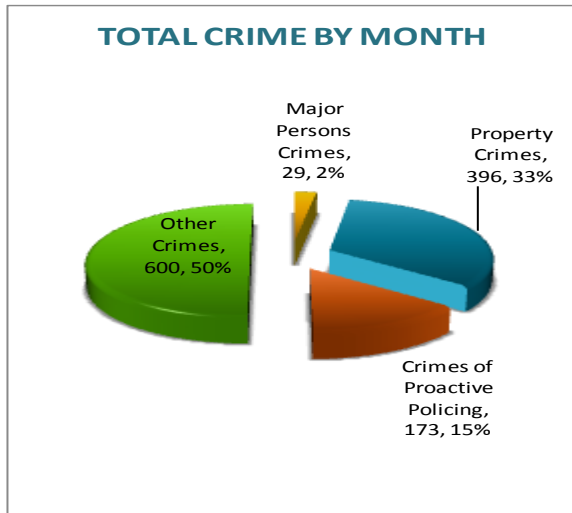
The Crime Analysis division consists of one Crime Analyst and one part-time Crime Analyst Assistant. The Crime Analyst position is responsible for the analysis and dissemination of crime activity data and the collection and maintenance of crime intelligence information for the city of Jonesboro. Additionally, the Office is charged with providing the department with current and accurate crime maps presenting crime activity data to audiences of interest and with responding to requests for crime data from civilians and departmental staff. Data exported from this division is used by field agents for more effective, efficient policing, by administration for improved staffing decisions, and by the Mayor's office for community decision making and enhanced public relations. The following section is broken down into Total Crime, Crimes against Persons, Property Crimes, Crimes of Proactive Policing, Other Crimes, Arrest Demographics, and Total Crime Monthly Comparison.

December 12, 2014

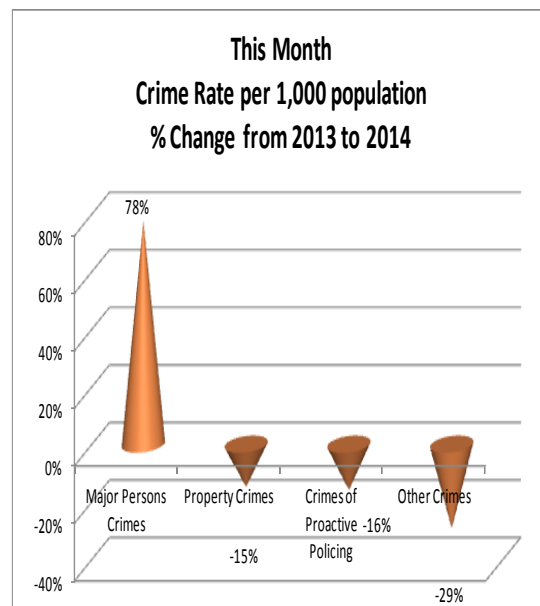
TOTAL CRIME

The crime activity for the month of November 2014 was at a total of 1,198 NIBRIS reportable offenses, a 21% decrease, comparing to the total of offenses reported in November of the last year. With Jonesboro population estimated to be equal to 71,527, the crime rate in November of this year was at 18 crimes per 1,000 population, comparing to 22 crimes per 1,000 population last year¹, a - 22% decrease. As indicated on the pie chart below, Other Crimes absorb the majority, 50%, of this month's crime activity (n = 600). Property Crimes fall into a second place and comprise of 33% of all the crimes (n = 396). Following in third and fourth places are, respectively, Crimes of Proactive Policing, comprising of 15% (n = 173) of all the crimes, and Crimes against Persons, comprising of 2% (n = 29) of all the crimes this month.

year to date crime rate is 226 offenses per 1,000 population, as compared to 237 offenses per 1,000 population last year, a -5% decrease. To date, a 54% of all the offenses is attributed to Other Crimes category (n = 8,530). Property Crimes amount to 31% of all the offenses (n = 4,951), Crimes of Proactive Policing comprise of 13% of all the crimes to date, where n = 2,044; Crimes against Persons comprise of 2% of a total year to date number of crimes (n = 322).



Year to date data includes number of crimes from January through November 2014. A total of 15,847 NIBRIS reportable offenses were reported so far in 2014, a -5% decrease, comparing to the same period of last year. The

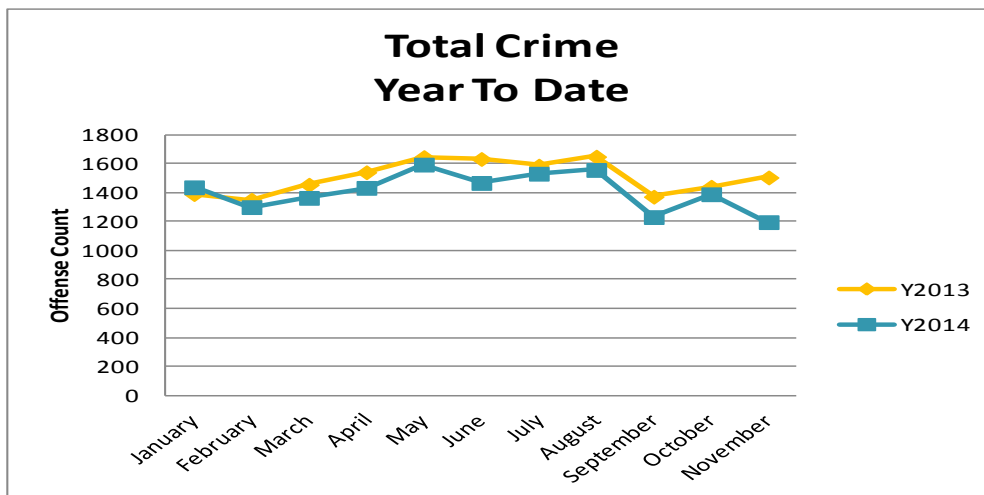
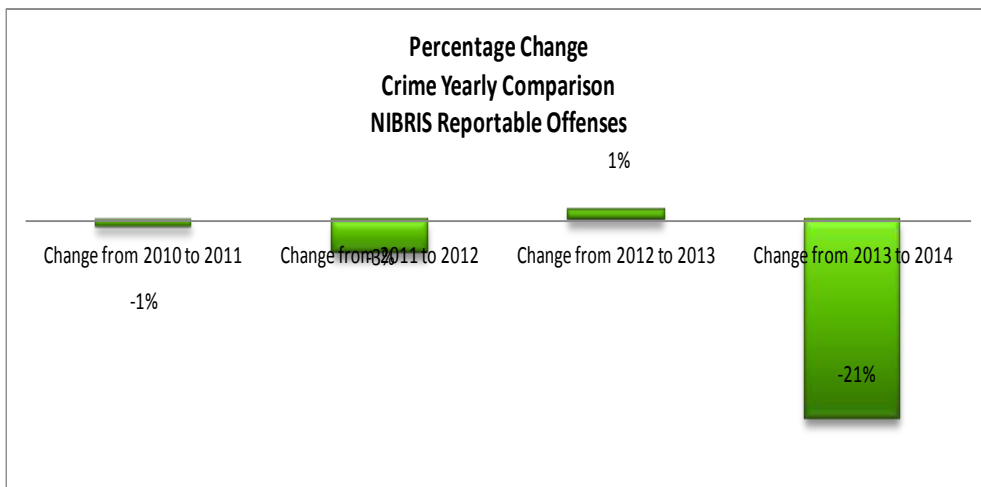
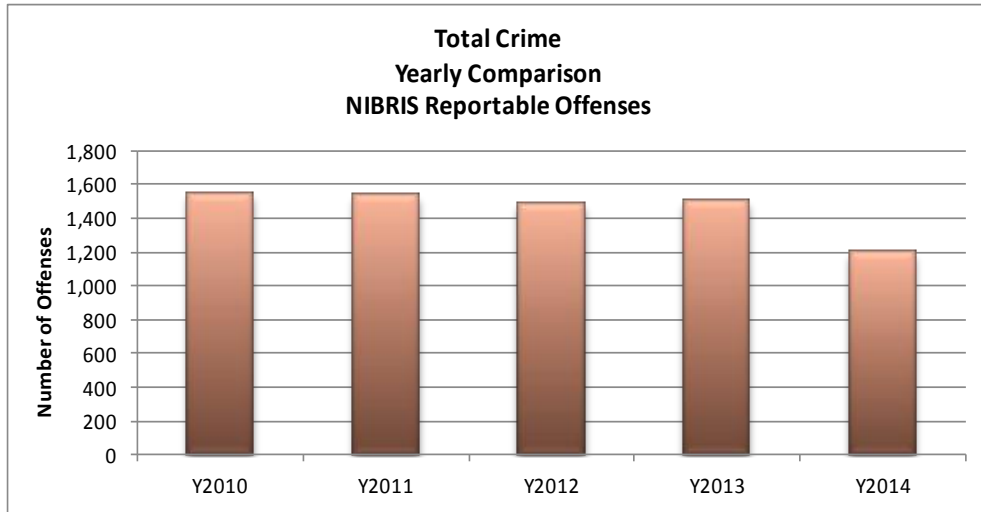


¹ Note: Population numbers are based on 2012 & 2013 population estimate, where 2012 population estimate is 70,187.

MONTHLY REPORT NOVEMBER 2014

December 12, 2014

The charts below depict frequencies of crime by year, percentage change from year to year, and year to date yearly comparison.

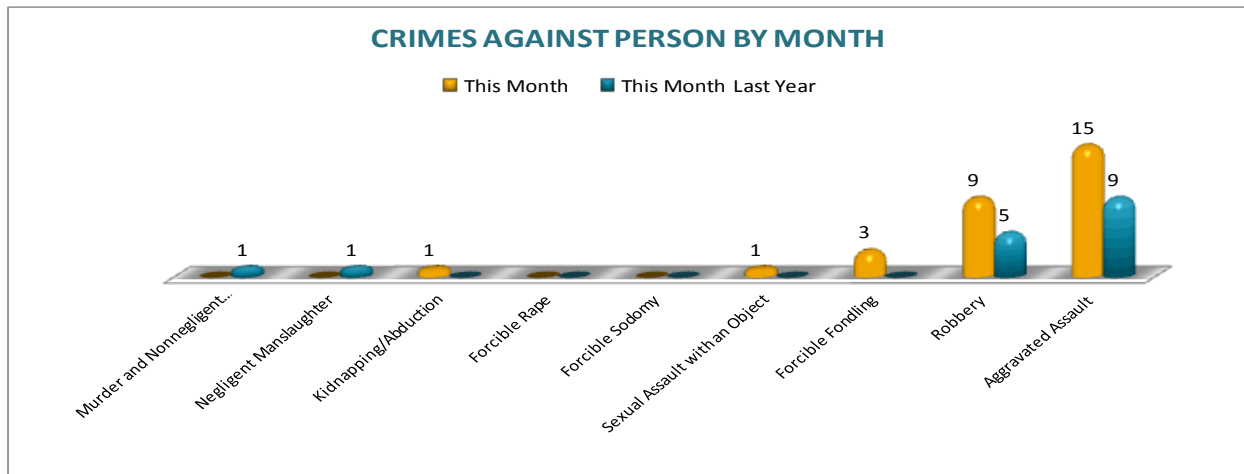


December 12, 2014

CRIMES AGAINST PERSONS

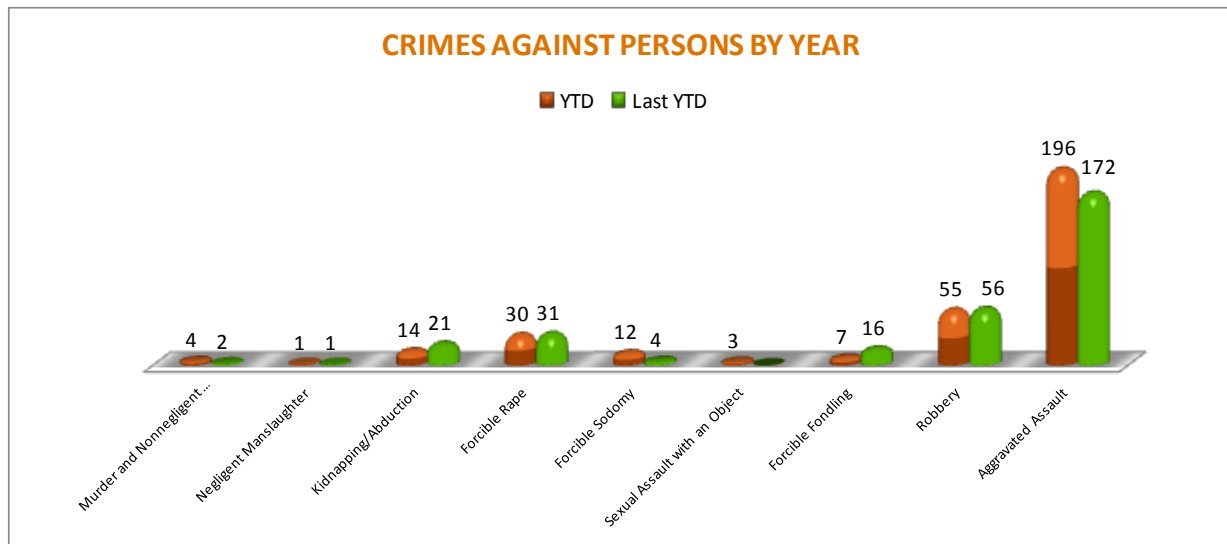
There are 9 crimes that make up this section. There were a total of 29 offenses in this area in November this year, 13 offenses more, comparing to November of the last year. There were 4 more Robberies and 6 more Aggravated

Assaults reported this year in November, comparing to the last year. As demonstrated on the column chart below, there are no significant changes in frequencies for the remaining offenses under this category.



A graph below shows the year to date data for Crimes against Persons, which amounts to a total of 322 offenses for this category of crimes, a 6% increase, comparing to the year to date data of last year. Robberies decreased by -2%. There were 9 less instances of Forcible Fondling, comparing to the same time frame last year. There were 3 more Murders and Nonnegligent

Manslaughters committed this year and 7 less Kidnapping/Abductions offenses. Aggravated Assaults have increased by 14% and we had 8 more instances of Forcible Sodomy reported so far this year. There are no other significant changes in frequencies for the crimes in this category.

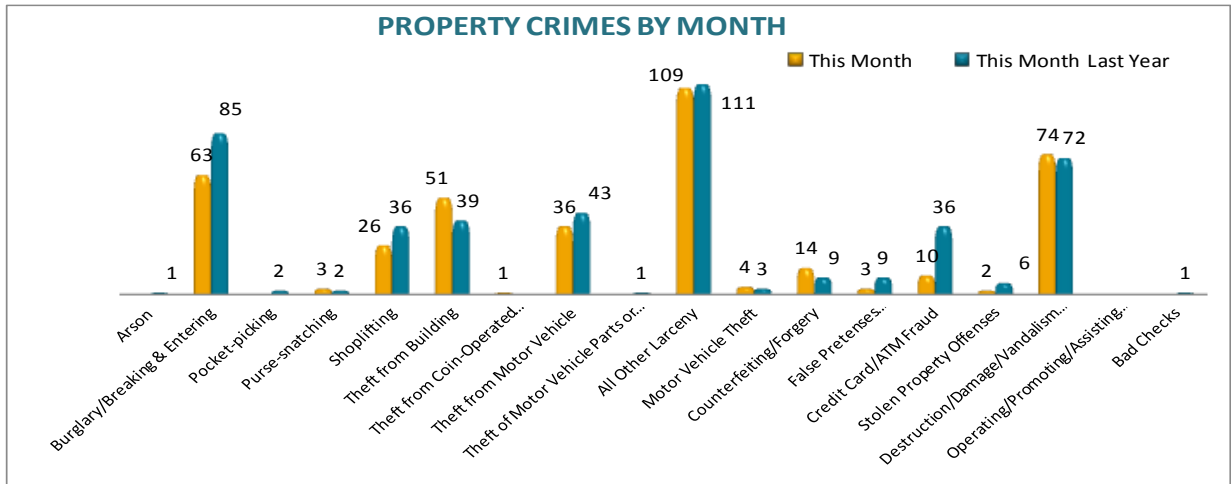


December 12, 2014

PROPERTY CRIMES

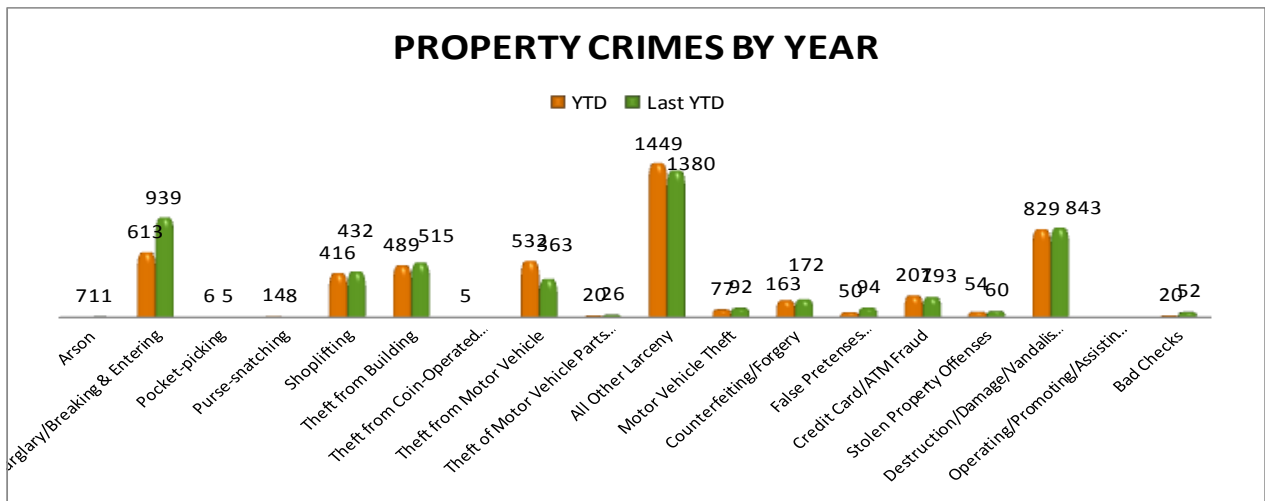
This section displays the criminal activity for 18 crimes, all against property. This month, there were a total of 396 Property Crimes, a -13% decrease, comparing to November of the last year. The data indicates change in Burglary/Breaking & Entering, down -26%, and

in Shoplifting, down -28%. Credit card/ATM Fraud is down -72%. Theft from building has increased, up 31% and Counterfeiting/Forgery is up 56%. No other significant changes are noted for the remainder of the offenses in this category of crimes.



To date, a total of 4,951 property offenses have been reported, a -5% decrease, comparing to the last year's data at this same time. The following changes are noted this year to date period: Burglary /Breaking & Entering are down, -35%; Shoplifting offenses are down -4%; Theft from Building is down, -5%; Motor Vehicle Theft is down, -16%; Counterfeiting / Forgery is down,

-5%; False Pretenses / Swindle/ Confidence Game are down, -47%; Stolen Property Offenses are down, -10%, and Bad Checks offenses are down, -62%. Purse Snatching offenses are up 75%, Theft from Motor Vehicle is up 47%, Credit Card/ATM Fraud is up 7%, and All Other Larceny is up 5%.

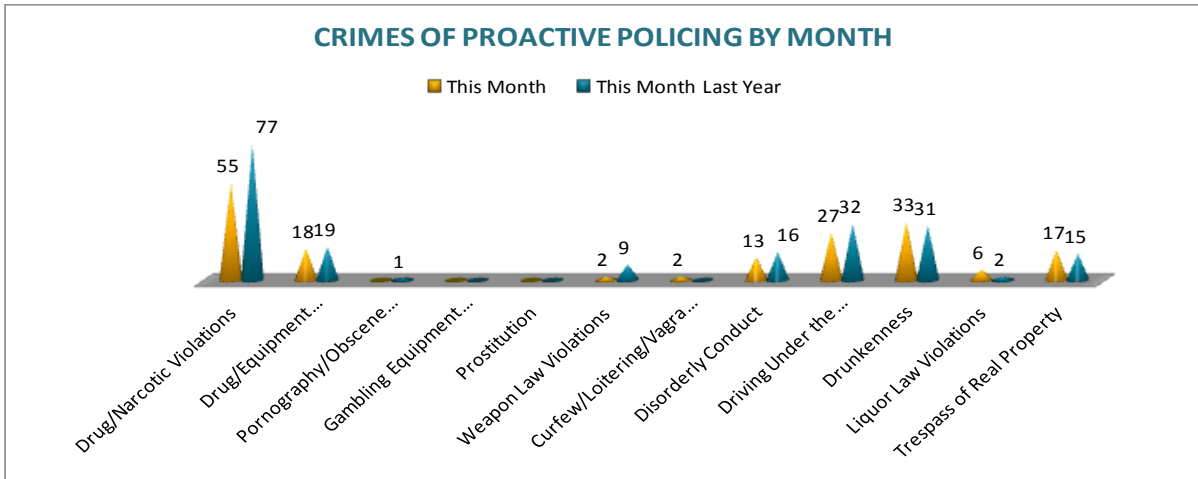


December 12, 2014

CRIMES OF PROACTIVE POLICING

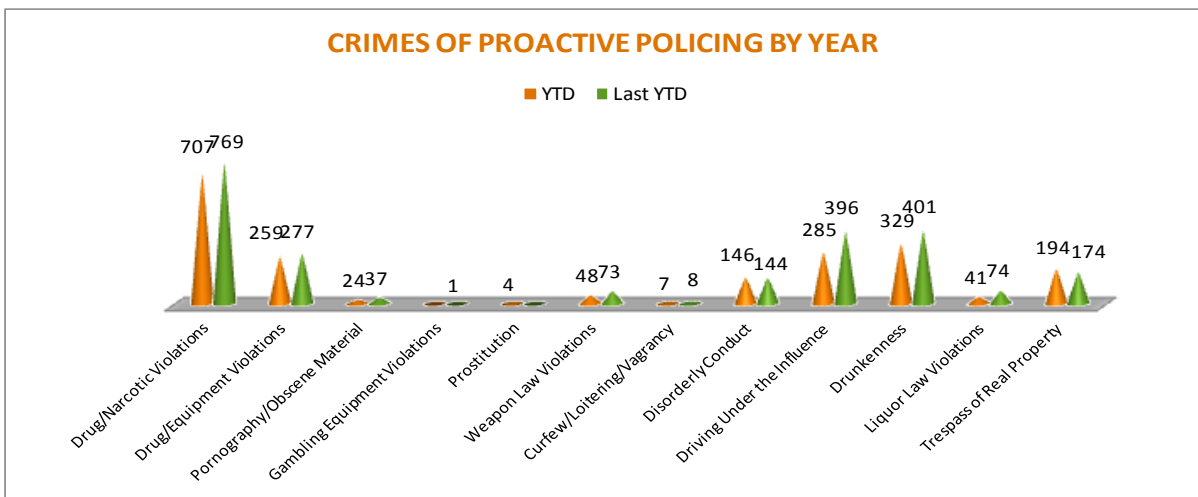
Crimes of Proactive Policing are those crimes that result from police officers actively policing the streets to combat certain types of street crime. As chart below indicates, twelve crimes fall under this category. A total of 173 offenses have been reported this month, down -14%,

comparing to November of the last year. Drug/Narcotic Violations have decreased by 29%. Driving Under the Influence violations are down, -16%; Drunkenness is up 6%. There are no other major changes noted for the offenses in this category.



To date for the year 2014, there have been 2,044 offenses of proactive policing reported, a -13% decrease when comparing to the last year's to date data. Drug/Narcotic Violations are down -6%, Drug / Equipment Violations are down -8%, Drug/Equipment offenses are down -6%, Weapon Law Violations are down -43%,

and Driving under Influence has decreased by -28%. Drunkenness is down -18% and Liquor Law Violations are down -45%, and Pornography / Obscene Material offenses are down -35%. Trespass of Real Property has increased by 11%. There are no other significant changes noted for other offenses in this category.

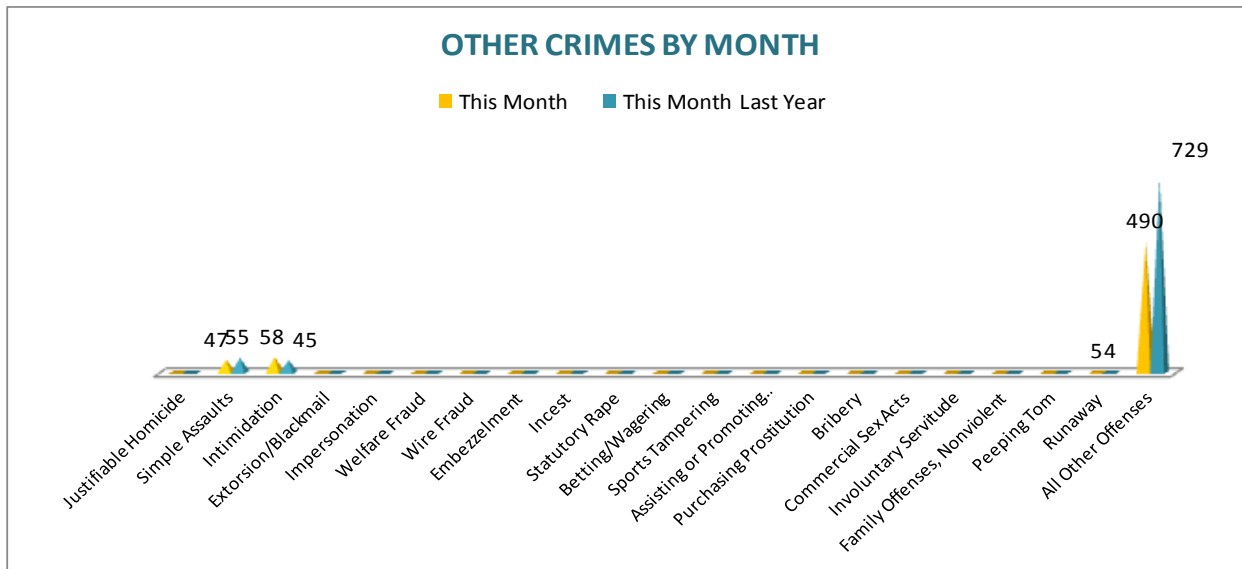


December 12, 2014

OTHER CRIMES

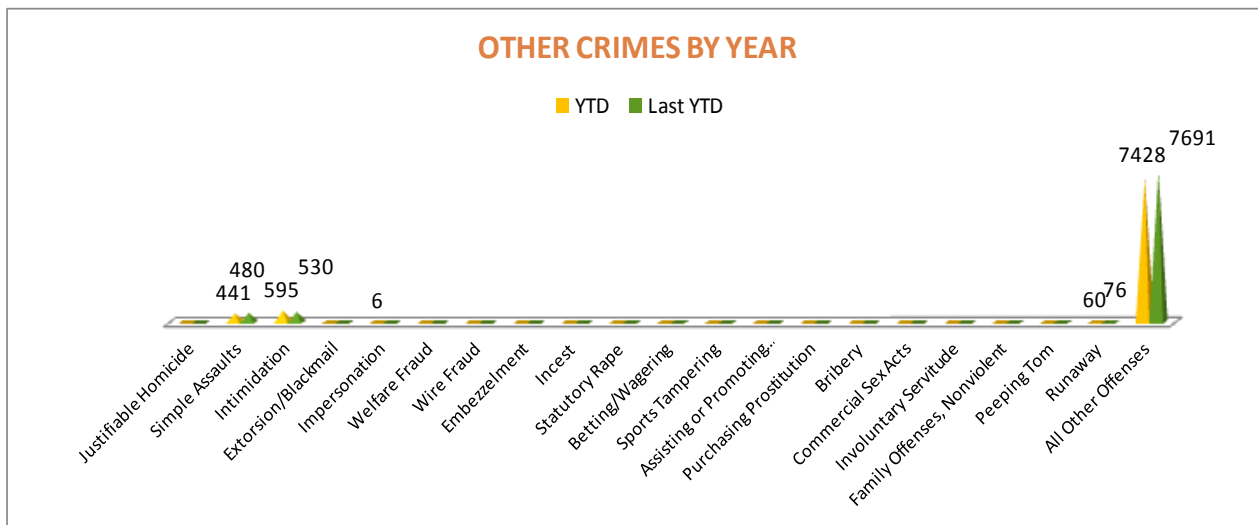
There are 21 crimes that fall into the Other Crimes category. This month, there have been a total of 600 Other Crimes reported, a -28% decrease, comparing to November of the last year. All Other Offenses have decreased by -

33%. Simple Assaults have decreased by -15% while Intimidation offenses have increased by 29%. No other major changes are noted in this category of crimes this month.



To date this year, there have been 8,530 Other Crimes offenses reported, down -3% when comparing to the last year's to date data. Intimidation offenses have increased by 12% and Simple Assaults offenses have decreased by

-8%. Runaway offenses are down, -21%. All Other Offenses have decreased by -3%. No other major changes have been observed for other offenses within this category, comparing to the last year's data.

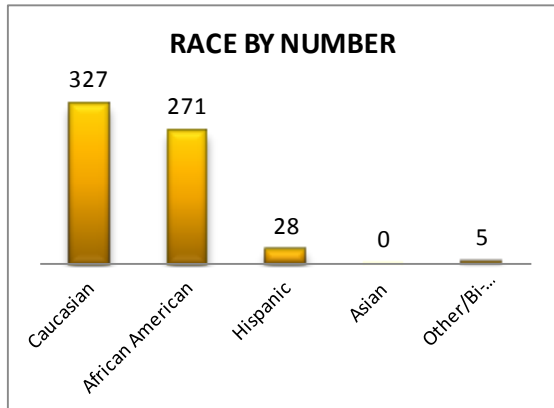
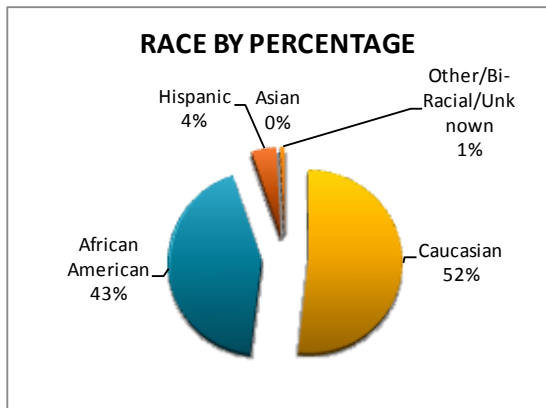
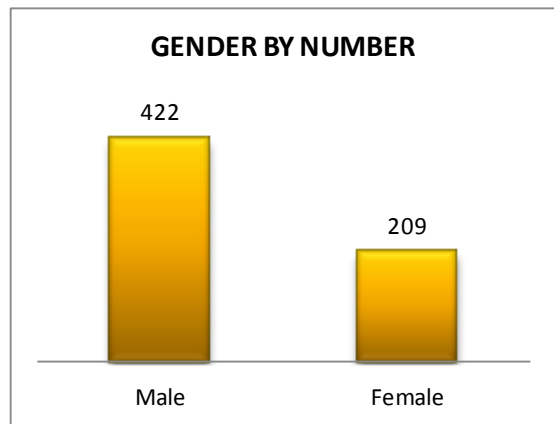
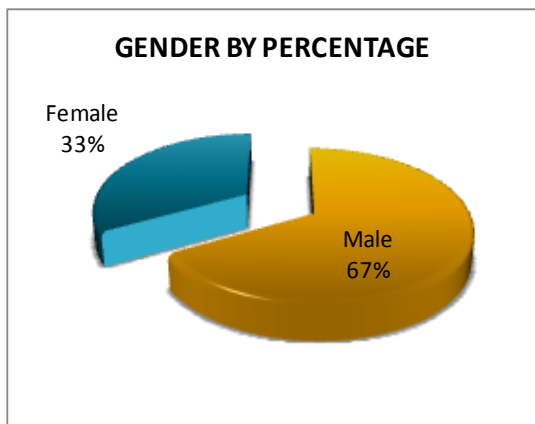


December 12, 2014

ARREST DEMOGRAPHICS

In November 2014, there were a total of 631 arrests carried out by the Jonesboro Police Department, down -26%, comparing with the last year's data for the month of November. The rate of arrests per offense has decreased by -7% this month, comparing to the rate from the previous year; the rate of arrests per offense since January through November have decreased by -2%. This section breaks down this

month's arrests by race and gender. The majority of arrestees, 67%, have been male ($n = 422$), as opposed to 33% of female arrestees ($n = 209$). As for the racial/ethnic composition, the majority of arrestees have been Caucasian (52%) and African American (43%), comparing to Hispanic (4%), Asian (0%), or other/unknown/bi-racial (1%).

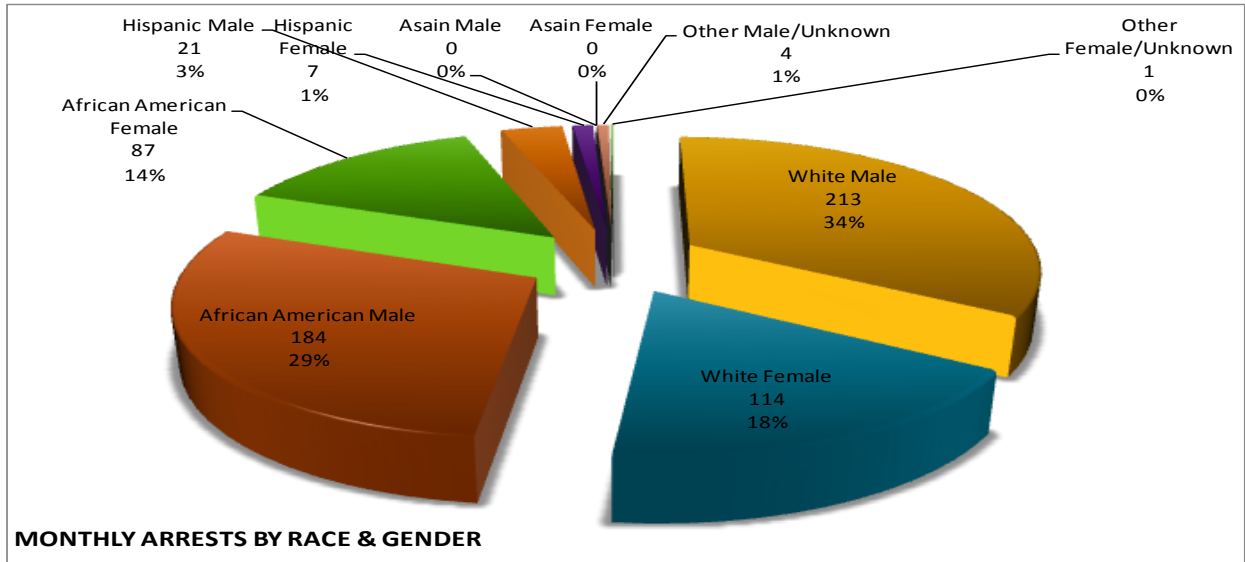


Caucasian males make up the majority, a 34% of arrestees this month, followed by African American males, 29%. Caucasian females make up 18%, while African American females make up 14% of all the arrestees this month. Hispanic

males make up 3%, while Hispanic females, male of Other/Unknown race, and female of Other/Unknown race make up 1% each of all the arrestees this month.

MONTHLY REPORT NOVEMBER 2014

December 12, 2014



EMERGENCY 911

Also known as Public Safety Answering Point (PSAP), the Emergency 911 Division is responsible for answering all calls from public for emergency assistance, accessing the needed information to best assist, and then assigning the most efficient and effective emergency response. In addition, this division is responsible

for setting priority call dispatching to field units including Police, Fire, and EMS. Emergency 911 also maintains all records for radio logs, calls for service, and other emergency service data collections.

Calls by Type	This Month	This Month Last Year	YTD	Last YTD	Change By Month	Change YTD
Land Line E911	879	725	9,240	8,683	21%	6%
Cell Phone E911	4,827	4,230	55,266	48,040	14%	15%
Admin Lines-non emer	13,703	13,646	155,475	159,462	0%	-3%
TOTALS	19,409	18,601	219,981	216,185	4%	2%

Calls by Agency	This Month	This Month Last Year	YTD	Last YTD	Change By Month	Change YTD
Jonesboro PD Calls	6,048	6,958	80,918	75,638	-13%	7%
Craighead Cty Sheriff	1,102	1,218	17,762	14,581	-10%	22%
Jonesboro Fire Dpt - dispatch	213	199	2,423	2,165	7%	12%
Jonesboro Fire Dpt - Med Asst	140	149	1,622	1,542	-6%	5%
Craighead Cty - Fire	64	50	610	460	28%	33%
Craighead Cty - 1st Responder	121	122	1,285	1,053	-1%	22%
Emerson Ambulance	318	304	3,381	3,154	5%	7%
Medic One	328	306	3,779	3,480	7%	9%
Air Evac	2	0	5	5	N/C	0%
Coroner	4	5	42	36	-20%	17%
ARK State Police	7	12	89	110	-42%	-19%
Jonesboro Animal Control	7	7	48	44	0%	9%
Wreckers Called	228	224	2,336	2,015	2%	16%
TOTALS	8,582	9,554	114,300	104,283	-10%	10%

MONTHLY REPORT NOVEMBER 2014

December 12, 2014

Calls by Municipality	This Month	This Month Last Year	YTD	Last YTD	Change By Month	Change YTD
Bay PD	62	75	1353	1350	-17%	0%
Bono PD	220	135	3284	2997	63%	10%
Brookland PD	266	150	2438	1677	77%	45%
Caraway PD	43	75	484	793	-43%	-39%
Cash PD	84	150	1907	924	-44%	106%
Egypt PD	18	8	86	152	125%	-43%
Lake City PD	93	114	1171	1421	-18%	-18%
Monette PD	93	143	1289	1488	-35%	-13%
TOTALS	879	850	12,012	10,802	3%	11%

UNIFORM PATROL DIVISION

The UPD is responsible for responding to calls into the Emergency – 911 Division by civilians and are normally the first responders. Jonesboro is divided into 6 patrol districts. Officers from UPD are assigned to a district and

work the same district every shift. In addition, when a Traffic Officer is not available, a UPD Officer will respond to traffic accidents and assist in directing traffic when necessary.

Incidents	This Month	This Month Last Year	YTD	Last YTD	Change By Month	Change YTD
Calls for Service	5,166	6,958	81,890	77,552	-26%	6%
Complaints	3,384	4,677	51,986	45,318	-28%	15%
Assists	1,316	649	12,158	12,842	103%	-5%
Incident Reports	792	818	9,690	9,431	-3%	3%
Street Accidents	117	82	943	889	43%	6%
Private Property Accidents	34	37	506	444	-8%	14%
Traffic Stops	1,782	2,281	29,008	22,528	-22%	29%
Traffic Citations	357	453	5,636	7,005	-21%	-20%
Written Warnings	528	1,064	14,234	9,809	-50%	45%
DWI	23	32	242	433	-28%	-44%
Mis. Arrests	385	447	4,138	5,032	-14%	-18%
Felony Arrests	73	113	1,018	1,028	-35%	-1%
Warrants Served	617	1,093	9,539	14,341	-44%	-33%
Alarms	399	400	4,484	3,875	0%	16%
Hours Worked	7,664	7,614	87,147	97,631	1%	-11%

PROWL

The Prowl unit is a uniformed street crimes unit specializing in criminal patrol, narcotics enforcement, gang investigation, and prostitution activity. The unit conducts directed

patrols, investigates citizen complaints of street-level criminal activity, and directly assists the 2nd Judicial Drug Task Force. PROWL also assists any division within the Jonesboro Police Department at any time when needed.

MONTHLY REPORT NOVEMBER 2014

December 12, 2014

Incidents	This Month	This Month Last Year	YTD	Last YTD	Change By Month	Change YTD
Street Accidents	0	0	0	0	N/C	N/C
Private Property Accidents	0	0	0	2	N/C	-100%
Traffic Citations	0	23	92	260	-100%	-65%
DWI	0	0	0	0	N/C	N/C
Mis. Arrests	0	66	778	1,236	-100%	-37%
Felony Arrests	0	11	198	291	-100%	-32%
Drug Arrests	0	13	167	291	-100%	-43%
Public Intoxication Arrests	0	0	0	0	N/C	N/C
Calls For Service	5	50	446	790	-90%	-44%
Alarms	0	0	0	0	N/C	N/C
Parking Citations	0	0	0	0	N/C	N/C
Written Warnings	0	51	451	722	-100%	-38%
Assists	0	0	0	0	N/C	N/C
TOTALS	0	0	0	0	N/C	N/C
Value of Drugs Seized	\$ -	\$ 3,300.00	\$ 152,965.00	\$ 101,730.00	-100%	50%
Value of Asstes Seized	\$ -	\$ 6,767.00	\$ 6,534.00	\$ 41,044.00	-100%	-84%
Patrol Miles	500	5,500	56,013	81,400	-91%	-31%

CRIMINAL INVESTIGATIVE DIVISION

The CID is responsible for conducting follow-up investigations into criminal acts reported to the Jonesboro Police Department. The primary goal is to collect and present evidence that

conclusively leads to a successful arrest. Additionally, CID is charged with clearing additional crimes, recovering stolen property, preventing additional crimes, and gathering intelligence information.

Investigations	This Month	This Month Last Year	YTD	Last YTD	Change By Month	Change YTD
Criminal Investigations Assigned	114	130	1565	1359	-12%	15%
Criminal Investigations Closed	92	60	1083	937	53%	16%
Cleared by Arrests	57	43	693	568	33%	22%
Unfounded	12	3	114	115	300%	-1%
Exceptionally Cleared	19	8	187	144	138%	30%
Filed With Prosecutors Office	3	4	54	74	-25%	-27%
Property Crimes	This Month	This Month Last Year	YTD	Last YTD	Change By Month	Change YTD
Criminal Investigations Assigned	60	88	1003	885	-32%	13%
Criminal Investigations Closed	42	34	648	528	24%	23%
Cleared by Arrests	29	27	454	346	7%	31%
Unfounded	5	2	58	57	150%	2%
Exceptionally Cleared	8	5	110	93	60%	18%
Filed With Prosecutors Office	0	0	26	32	N/C	-19%
Investigations	This Month	This Month Last Year	YTD	Last YTD	Change By Month	Change YTD
Criminal Investigations Assigned	114	130	1565	1359	-12%	15%
Criminal Investigations Closed	92	60	1083	937	53%	16%
Cleared by Arrests	57	43	693	568	33%	22%
Unfounded	12	3	114	115	300%	-1%
Exceptionally Cleared	19	8	187	144	138%	30%
Filed With Prosecutors Office	3	4	54	74	-25%	-27%

MONTHLY REPORT NOVEMBER 2014

December 12, 2014

Crimes Against Children	This Month	This Month Last Year	YTD	Last YTD	Change By Month	Change YTD
Criminal Investigations Assigned	9	11	97	107	-18%	-9%
Criminal Investigations Closed	4	8	64	77	-50%	-17%
Cleared by Arrests	0	4	39	32	-100%	22%
Unfounded	1	0	15	15	N/C	0%
Exceptionally Cleared	0	1	2	9	-100%	-78%
Filed With Prosecutors Office	3	3	8	21	0%	-62%
	This Month	This Month Last Year	YTD	Last YTD	Change By Month	Change YTD
Miscellaneous Investigations Assigned	3	2	24	16	50%	50%
Miscellaneous Investigations Cleared	1	2	36	29	-50%	24%
FINGERPRINTS	This Month	This Month Last Year	YTD	Last YTD	Change By Month	Change YTD
Rolled for the Public	99	91	966	1931	9%	-50%

WARRANTS

The Warrants Division is responsible for serving warrants, criminal summonses, and subpoenas that are issued by the District Court. On city court days, the Warrants Division provides a bailiff for court and a transport officer. In addition, this Division is responsible for

transporting wanted persons arrested in other jurisdictions back to Jonesboro. The STEP program operates within this division and is a grant-funded operation in which officers can get paid overtime to enforce the safety belt law.

Arrests	This Month	This Month Last Year	YTD	Last YTD	Change By Month	Change YTD
Misdemeanor	3	1	11	4845	200%	-100%
Felony	0	2	2	6	-100%	-67%
Total Arrests	3	3	13	4851	0%	-100%

Warrants by Activity	This Month	This Month Last Year	YTD	Last YTD	Change By Month	Change YTD
Subpoenas	478	539	3998	5796	-11%	-31%
Commitments	9	6	71	59	50%	20%
Traffic Citations	599	1	8896	13	59800%	68331%
Complaints	0	3	8	43	-100%	-81%
Assist	1	0	37	3	N/C	1133%
Alarms	4	0	8	0	N/C	N/C

Hours by Activity	This Month	This Month Last Year	YTD	Last YTD	Change By Month	Change YTD
SI Criminal	124	168.5	1409.5	1984.7	-26%	-29%
Court	107	91.5	1104	1149.2	17%	-4%
Prisoner Transport	58.5	54.5	418	427.67	7%	-2%

Hours Worked	This Month	This Month Last Year	YTD	Last YTD	Change By Month	Change YTD
Regular Hours Worked	556	552.5	5398	6083.5	1%	-11%
Overtime Hours Worked	9	12	165	77.3	-25%	113%
TOTAL Hours Worked	565	564.5	5563	6160.8	0%	-10%

Mileage	This Month	This Month Last Year	YTD	Last YTD	Change By Month	Change YTD
Total Mileage	3735	3791	30937	34539	-1%	-10%

MONTHLY REPORT NOVEMBER 2014

December 12, 2014

STEP	This Month	This Month Last Year	YTD	Last YTD	Change By Month	Change YTD
DWI Arrest	0	0	0	0	N/C	N/C
DUI Arrest	0	0	0	0	N/C	N/C
Traffic Citations	320	0	320	125	N/C	156%
Felony Arrests	1	0	1	1	N/C	0%
Drug Arrests	0	0	0	0	N/C	N/C
STEP TOTALS	91	0	91	126	N/C	-28%
STEP Hours Worked	177.5	0	177.5	135	N/C	31%
STEP Miles Driven	1077	0	1077	776	N/C	39%

DRUG TASK FORCE

The DTF is responsible for investigating major drug traffickers in the area, including all types of illegal drugs.

The DTF works closely with local, state, and federal agencies to eradicate drugs from the community.

INVESTIGATIONS	This Month	This Month Last Year	YTD	Last YTD	Change By Month	Change YTD
Opened	16	19	306	227	-16%	35%
Closed	16	17	215	163	-6%	32%
TOTAL	32	36	521	390	-11%	34%
With Nexus to Jonesboro	This Month	This Month Last Year	YTD	Last YTD	Change By Month	Change YTD
Opened	19	13	279	188	46%	48%
Closed	0	0	0	0	N/C	N/C
TOTAL	19	13	279	188	46%	48%
Outside Jonesboro (No Known Nexus)	This Month	This Month Last Year	YTD	Last YTD	Change By Month	Change YTD
Opened	0	0	3	6	N/C	-50%
Closed	0	0	0	0	N/C	N/C
TOTAL	0	0	3	6	N/C	-50%
ASSISTANCE RENDERED	This Month	This Month Last Year	YTD	Last YTD	Change By Month	Change YTD
Assist to Outside Agencies	0	0	9	1	N/C	800%
Assist to Jonesboro UPD/CID	14	7	99	82	100%	21%
ARRESTS	This Month	This Month Last Year	YTD	Last YTD	Change By Month	Change YTD
Miscellaneous	23	14	153	75	64%	104%
Felony	22	27	341	288	-19%	18%
Marijuana	1	6	37	60	-83%	-38%
Cocaine	0	2	4	11	-100%	-64%
Crack Cocaine	0	1	14	9	-100%	56%
Methamphetamine/ICE	12	11	145	107	9%	36%
LSD	0	0	1	0	N/C	N/C
Extasy (MDMA or Other Designer Drug)	0	0	1	3	N/C	-67%
Prescription	2	6	32	37	-67%	-14%
Opiates (Heroin, Opium)	0	0	0	0	N/C	N/C
Labs	0	0	0	4	N/C	-100%
All Other Drug Offenses	13	7	98	85	86%	15%
ASSET FORFEITURE	This Month	This Month Last Year	YTD	Last YTD	Change By Month	Change YTD
Vehicles Seized (No.)	0	0	1	2	N/C	-50%
Value of Assets Seized(Includes Value of vehicles)	\$0.00	\$0	\$6,814	#####	N/C	-54%
Asset Value Awarded to Jonesboro PD (State)	\$ -	\$ -	\$ -	\$ -	N/C	N/C
Asset Value Awarded to Jonesboro PD (Federal)	\$ -	\$ -	\$ -	\$ -	N/C	N/C
Asset Value Awarded to Jonesboro PD (Total)	\$ -	\$ -	\$ -	\$ -	N/C	N/C

MONTHLY REPORT NOVEMBER 2014

December 12, 2014

ARRESTS DEMOGRAPHICS	This Month	This Month Last Year	YTD	Last YTD	Change By Month	Change YTD
White	17	11	175	145	55%	21%
African American	1	9	72	64	-89%	13%
Latino	0	0	13	5	N/C	160%
Asian	0	0	0	0	N/C	N/C
Other/Bi-Racial	0	0	0	0	N/C	N/C
Male	9	13	171	143	-31%	20%
Female	10	7	80	62	43%	29%
White Male	8	7	104	88	14%	18%
White Female	9	6	71	51	50%	39%
African American Male	1	8	54	54	-88%	0%
African American Female	0	1	8	10	-100%	-20%
Latino Male	0	0	11	4	N/C	175%
Latino Female	0	0	2	0	N/C	N/C
Asian Male	0	0	0	0	N/C	N/C
Asian Female	0	0	0	0	N/C	N/C
Other/Bi-Racial Male	0	0	0	0	N/C	N/C
Other/Bi-Racial Female	0	0	0	0	N/C	N/C

TRAFFIC

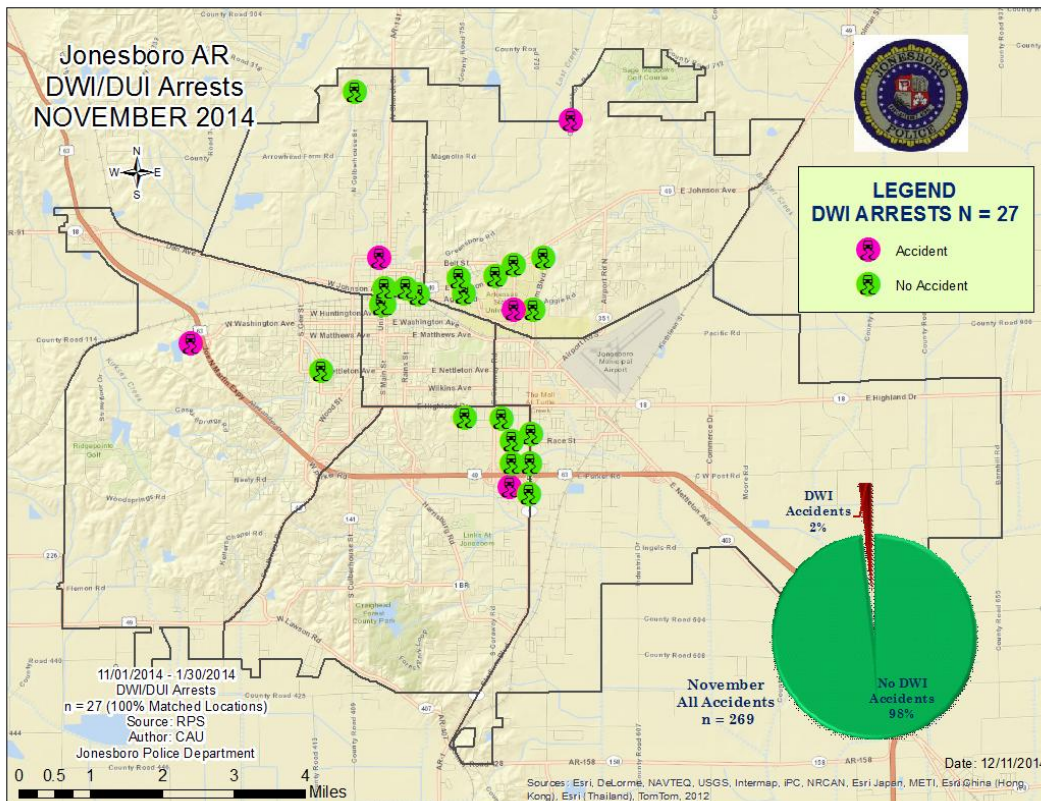
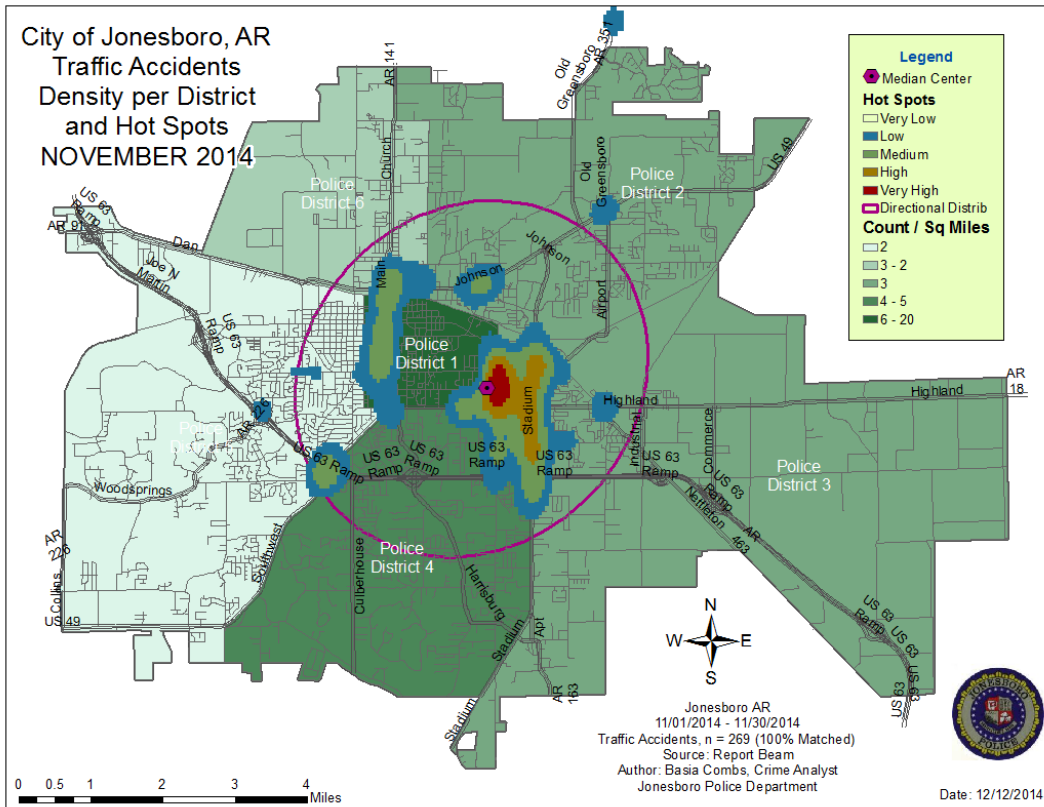
The Traffic Enforcement Unit responds to traffic accidents and provides increased enforcement in particularly challenging areas. This unit also provides extra coverage for specific congestion

problems and special events in the community. Last, they work details targeting specific issues, such as DWI enforcement and traffic safety checkpoints.

Incidents	This Month	This Month Last Year	YTD	Last YTD	Change By Month	Change YTD
Street Accidents	151	142	1542	1542	6%	0%
Private Property Accidents	22	31	451	463	-29%	-3%
Traffic Citations	149	91	1840	1125	64%	64%
DWI	2	2	21	15	0%	40%
Mis. Arrests	7	4	87	60	75%	45%
Felony Arrests	0	0	6	7	N/C	-14%
Drug Arrests	0	0	0	0	N/C	N/C
Public Intoxication Arrests	0	0	0	0	N/C	N/C
Calls For Service	56	209	1163	2566	-73%	-55%
Alarms	0	0	0	0	N/C	N/C
Parking Citations	0	0	0	0	N/C	N/C
Written Warnings	49	201	2210	1894	-76%	17%
TOTALS	436	680	7320	7672	-36%	-5%
Value of Asstes Seized	\$ -	\$ -	\$ -	\$ -	N/C	N/C
Patrol Miles	3,828	5,789	62,856	52,300	-34%	20%
Hours Worked	744.5	921.5	9997.5	9221	-19%	8%

MONTHLY REPORT NOVEMBER 2014

December 12, 2014



MONTHLY REPORT NOVEMBER 2014

December 12, 2014

ANIMAL CONTROL

The Animal Control Division is responsible for educating the public on safe and humane issues regarding animal treatment, enforcing all animal laws and ordinances, assisting the public

in resolving animal issues, and protecting the safety and welfare of the citizens and animals in this community.

Incident/Service	This Month	This Month Last Year	YTD	Last YTD	Change By Month	Change YTD
Barking Complaints	5	12	75	92	-58%	-18%
Bite Reports	5	3	47	51	67%	-8%
Door Hangers	48	44	568	550	9%	3%
Welfare Checks	47	46	592	642	2%	-8%
Advised of Rights	590	699	10865	9877	-16%	10%
Incident Reports	1	3	45	27	-67%	67%
Gone on Arrival	44	31	592	485	42%	22%
Complaints	774	651	9349	7688	19%	22%
Desk Complaints	1013	1232	16370	16669	-18%	-2%
Captured Dogs	85	142	1658	1652	-40%	0%
Captured Cats	17	18	279	220	-6%	27%
Captured Wildlife	33	19	355	447	74%	-21%
Chemical Captures	0	0	12	11	N/C	9%
Traps	48	21	358	435	129%	-18%
Deceased Animals	44	51	610	572	-14%	7%
Assist J.P.D.	4	5	63	63	-20%	0%
Assist C.S.O.	0	24	104	32	-100%	225%
Public Relations	230	234	3365	4657	-2%	-28%
Incident/Service	This Month	This Month Last Year	YTD	Last YTD	Change By Month	Change YTD
CITATIONS ISSUED	42	56	590	457	-25%	29%
WARNINGS ISSUED	61	151	1299	1210	-60%	7%
Physical Arrests	5	20	21	47	-75%	-55%
City Warrants Served	5	20	127	70	-75%	81%
County Warrants Served	0	0	2	3	N/C	-33%
Felony Bench Warrants	0	0	0	3	N/C	-100%
Euthanized	50	92	875	1122	-46%	-22%
Deceased Animals Landfill lbs.	2180	1840	28120	40530	18%	-31%
Wildlife Euthanized	33	19	255	447	74%	-43%
Sent to Rescue Centers	15	16	157	66	-6%	138%
Adoptions	33	27	536	375	22%	43%
Miles Driven	5,567	9,174	87,342	100,790	-39%	-13%

FLEET MAINTNANCE

The Fleet Maintenance is responsible for all of the police vehicle maintenance upkeep, cleanliness, and purchasing. In addition, this

Division handles most of the purchasing of equipment, supplies, and uniforms for all of the Police Department.

MONTHLY REPORT NOVEMBER 2014

December 12, 2014

Repair Costs by Model Year	This Month	This Month Last Year	YTD	Last YTD	Change By Month	Change YTD
95-99	\$ -	\$ -	\$ -	\$ -	N/C	N/C
2000	\$ -	\$ -	\$ 2,068.09	\$ -	N/C	N/C
2001	\$ -	\$ -	\$ -	\$ -	N/C	N/C
2002	\$ -	\$ -	\$ -	\$ -	N/C	N/C
2003	\$ -	\$ -	\$ 331.48	\$ 1,791.95	N/C	-82%
2004	\$ -	\$ 145.14	\$ 606.40	\$ 2,113.93	-100%	-71%
2005	\$ -	\$ -	\$ 2,351.10	\$ 257.01	N/C	815%
2006	\$ 1,746.86	\$ 665.89	\$ 18,065.60	\$ 30,957.50	162%	-42%
2007	\$ 977.69	\$ 981.47	\$ 19,389.16	\$ 28,192.04	0%	-31%
2008	\$ 1,618.00	\$ 582.17	\$ 13,435.08	\$ 7,750.62	178%	73%
2009	\$ -	\$ 11.66	\$ 7,293.71	\$ 5,233.54	N/C	N/C
2010	\$ -	\$ -	\$ 2,603.03	\$ 442.57	N/C	N/C
2011	\$ 1,596.86	\$ -	\$ 4,981.47	\$ 2,371.64	N/C	N/C
2012	\$ 66.98	\$ 186.34	\$ 1,183.83	\$ 186.34	N/C	N/C
2013	\$ 530.13	\$ 163.97	\$ 1,685.62	\$ 580.13	N/C	N/C
2014	\$ 165.05	\$ -	\$ 3,112.76	\$ -	N/C	N/C
Totals	\$ 6,701.57	\$ 2,736.64	\$ 77,107.33	\$ 79,877.27	N/C	N/C

Routine Preventative Maintenance by Model Year	This Month	This Month Last Year	YTD	Last YTD	Change By Month	Change YTD
95-99	\$ -	\$ -	\$ -	\$ 174.13	N/C	-100%
2000	\$ -	\$ -	\$ 40.00	\$ 29.00	N/C	38%
2001	\$ -	\$ -	\$ -	\$ 186.59	N/C	-100%
2002	\$ -	\$ -	\$ -	\$ 20.00	N/C	-100%
2003	\$ -	\$ -	\$ 187.54	\$ 367.59	N/C	-49%
2004	\$ -	\$ 20.00	\$ 1,221.77	\$ 757.94	-100%	61%
2005	\$ 535.09	\$ 128.50	\$ 1,146.54	\$ 1,678.82	316%	-32%
2006	\$ 197.00	\$ 245.35	\$ 6,067.56	\$ 11,963.20	-20%	-49%
2007	\$ 1,328.22	\$ 279.70	\$ 8,902.06	\$ 12,430.89	375%	-28%
2008	\$ 1,000.57	\$ 100.00	\$ 3,783.20	\$ 4,459.59	901%	-15%
2009	\$ 755.21	\$ 1,673.87	\$ 5,724.79	\$ 7,037.36	N/C	N/C
2010	\$ -	\$ 20.00	\$ 1,178.78	\$ 1,847.49	N/C	N/C
2011	\$ 1,810.43	\$ 814.60	\$ 15,699.00	\$ 9,751.69	N/C	N/C
2012	\$ 51.95	\$ 83.83	\$ 1,840.49	\$ 667.25	N/C	N/C
2013	\$ 24.50	\$ 20.00	\$ 1,525.81	\$ 1,451.40	N/C	N/C
2014	\$ 152.31	\$ 457.80	\$ 3,598.66	\$ 457.80	N/C	N/C
Totals	\$ 5,855.28	\$ 3,843.65	\$ 50,916.20	\$ 53,280.74	N/C	N/C

RECORDS

The Records Division is responsible for providing administrative and clerical support to the department. Major responsibilities include entering the accident and incident reports and tickets into the records database management

system, assisting the general public for report requests, performing criminal backgrounds, serving as a switchboard at times, performing validations, and setting up and managing the payment plans out of court.

MONTHLY REPORT NOVEMBER 2014

December 12, 2014

RECORDS	This Month	This Month Last Year	YTD	Last YTD	Change By Month	Change YTD
Incident/Arrest Reports Processed	1050	1221	13701	13688	-14%	0%
Accident Reports Processed	269	212	2565	2346	27%	9%
Citations Processed	2630	3401	37439	44418	-23%	-16%
Warnings Processed	971	608	16475	9265	60%	78%
Backgrounds	4	12	89	210	-67%	-58%
Fingerprints	0	0	0	1177	N/C	-100%
Photos	0	5	2	13	-100%	-85%
Accident Requests	63	91	774	1292	-31%	-40%
Accident Requests Online	187	138	1,607	1,290	36%	25%

PROFESSIONAL STANDARDS

The Office of Professional Standards, a unit within Administration, is charged with the compilation and updating of an extensive set of policies and procedures and providing a general operations guideline and code of conduct for officers to follow. In the event that a member of

the public does experience a negative interaction with an officer, mechanisms are in place for them to lodge a complaint. All complaints are reviewed and investigations completed in a timely manner.

Professional Standards	This Month	This Month Last Year	YTD	Last YTD	Change By Month	Change YTD
Opened (TOTAL)	1	5	63	72	-80%	-13%
Closed	1	5	62	66	-80%	-6%
Inquiries	1	2	53	54	-50%	-2%
Formal Investigations	0	1	13	10	-100%	30%
Sustained	0	0	33	29	N/C	14%
Not-Sustained	1	5	11	13	-80%	-15%
Exonerated	0	0	1	1	N/C	0%
Unfounded	0	0	17	7	N/C	143%

END OF REPORT

December 12, 2014



Contact Information

Basia Combs, MPA, CCIA | Crime Analyst | Office of Crime Analysis & Criminal Intelligence
Jonesboro Police Department | 410 W Washington Ave | Jonesboro, AR 72401
Ph: 870-336-7196 | E-mail: bcombs@jonesboro.org | www.jonesboropolice.com
