
JPD Monthly Report

December 2010

Heather Clements,
Crime Analyst



Executive Summary

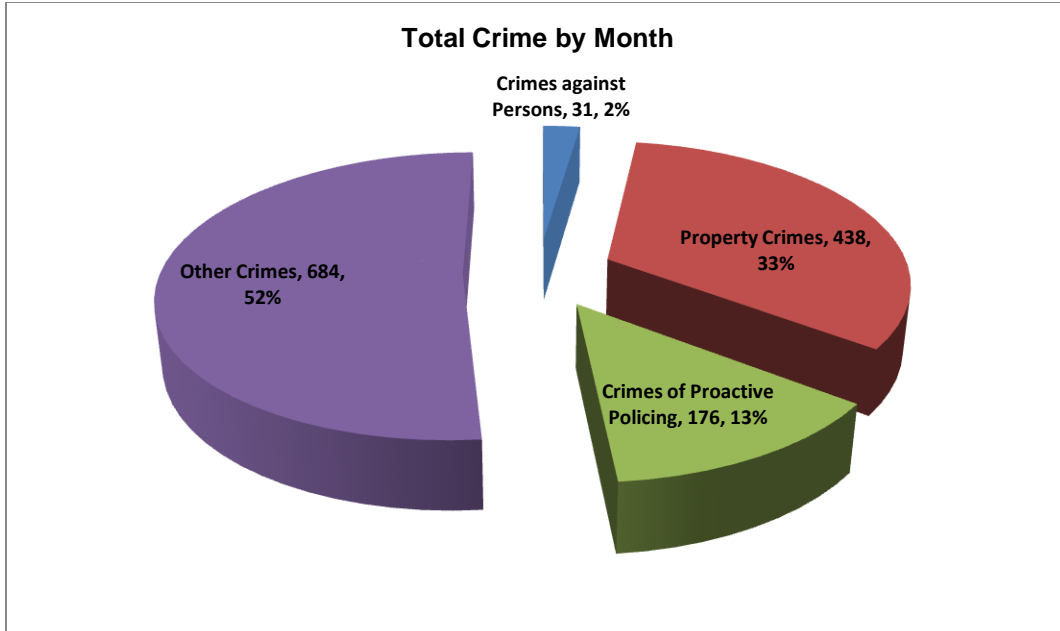
The purpose of the Jonesboro Police Department Monthly Report is to compile data into one integrated report for review, allowing for a seamless flow of information for better decision-making. After each department collates their monthly numbers and sends it to Crime Analysis, it is organized into sections of departmental data, analyzed and packaged, and finally disseminated to department heads, the Chief of Police, the City Mayor, and the City Council. Major sections include Crime Analysis, Emergency 911, Uniform Police Division, Prowl, Criminal Investigative Division, Warrants, Drug Task Force, Traffic, Parking Enforcement, Animal Control, Fleet Maintenance, Records, and Professional Standards.

Crime Analysis

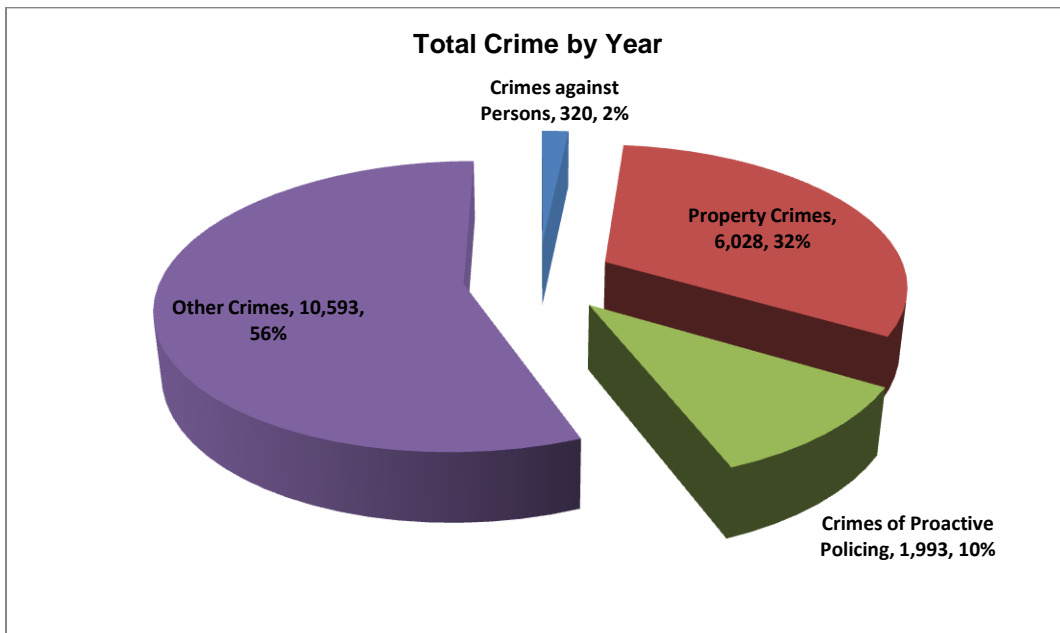
The Crime Analysis division consists of a Crime Analyst and a Crime Analyst Assistant. The Crime Analyst position is responsible for the analysis and dissemination of crime activity data and the collection and maintenance of crime intelligence information for the city of Jonesboro. Additionally, the Crime Analyst is charged with providing the department with current and accurate crime maps, presenting crime activity data to audiences of interest, and responding to requests for crime data from civilians and departmental staff. Data exported from this division is used by field agents for more effective, efficient policing, administration for improved staffing decisions, and the Mayor's office for community decision making and enhanced public relations. This section is broken down into total crime, crimes against persons, property crimes, crimes of proactive policing, other crimes, and arrest demographics.

Total Crime

The crime activity for this month is at a total of 1,329 offenses, down from 1,398 offenses last December, a 5% decrease. Other Crimes absorb the majority of this month's crime activity at 52% ($n = 684$). Property crimes fall in second place with 33% ($n = 438$). Following in third and fourth places are crimes of proactive policing at 13% ($n = 176$) and crimes against persons at 2% ($n = 31$).

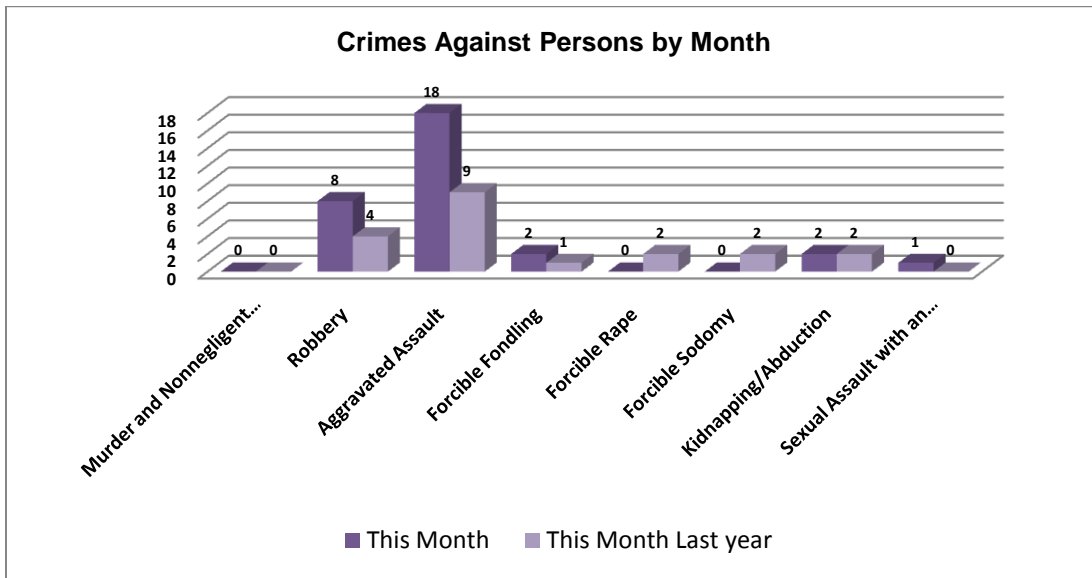


Year to date data includes January through December, of which there is a total of 18,934 offenses, up from 16,051 last December, an 18% increase. Again, other crimes has the highest percentage to total crimes at 56% ($n = 10,593$). Similar to this month's data, property crimes take second place at 32% ($n = 6,028$). Following are the crimes of proactive policing at 10% ($n = 1,993$) and crimes against persons at 2% ($n = 320$).

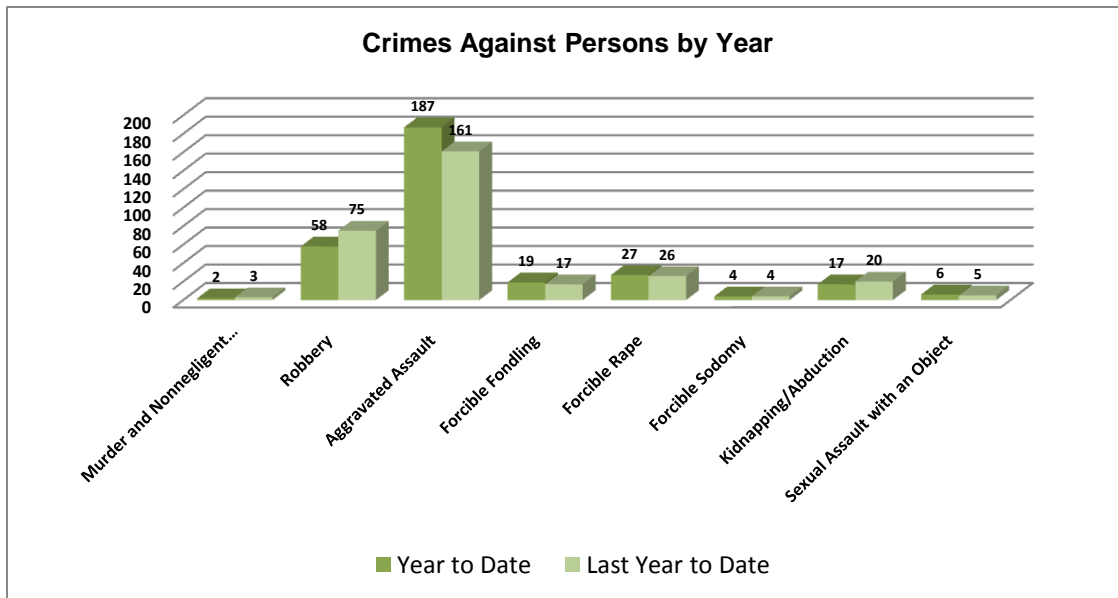


Crimes against Persons

There are 8 crimes that make up this section. There were a total of 31 offenses in this area this month, up from 20 last December, a 55% increase. The following chart demonstrates this month's activity compared to December of last year's activity in all 8 areas. The aggravated assaults are higher, up to 18 from 9, a 100% increase. Robbery was also higher this December, up 100%.



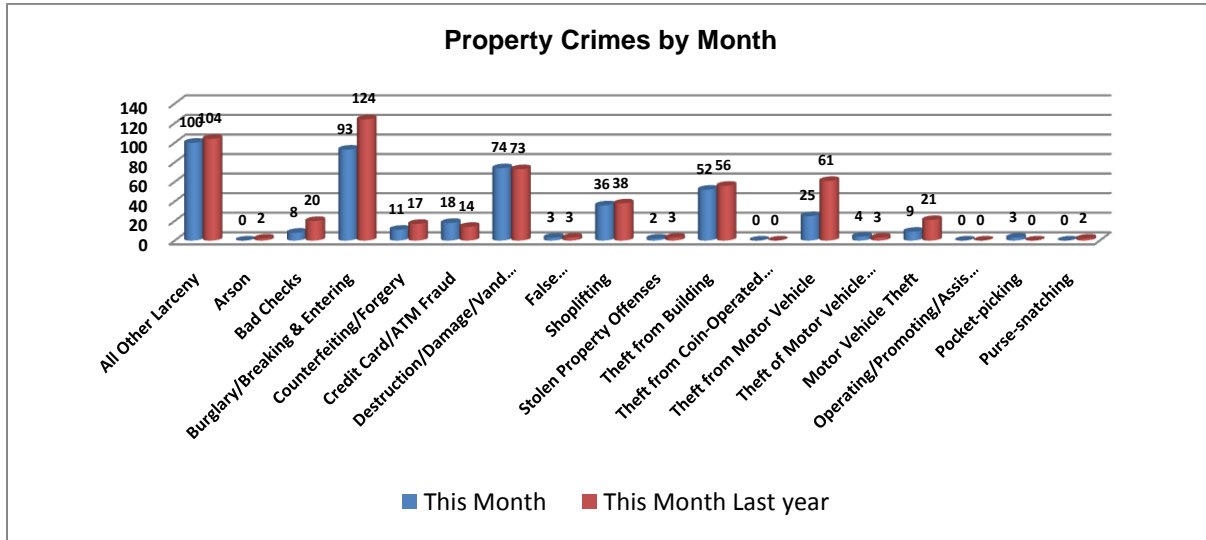
Below is a bar graph indicating the year to date data for crimes against persons. Total number of year to date crimes against persons this year is 320, up only by 9 from last December, an insignificant decrease (3%). Aggravated assaults are up by 16%.



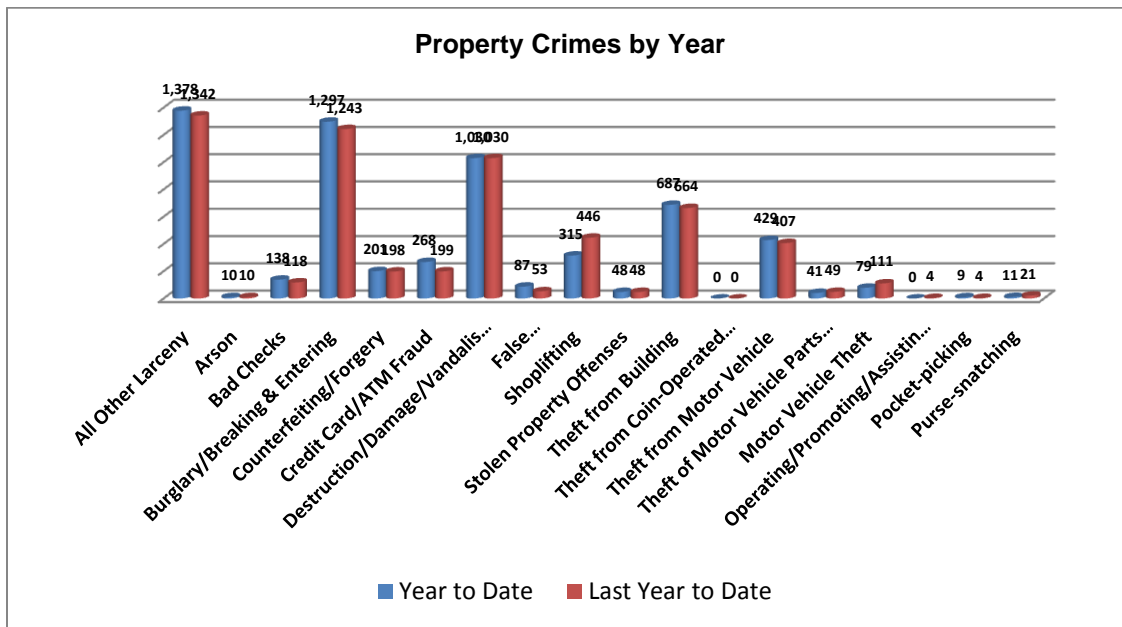
*Arkansas State University had 1 murder on campus in April, but this statistic is reported by ASU and not the City of Jonesboro.

Property Crimes

This section displays the criminal activity for 18 crimes, all against property. This month, there were a total of 438 property crimes, a 19% decrease from last December. Credit card theft is up by 29% and theft of motor vehicle parts are up by 33%. However, most offenses in this area are down this month from last December.

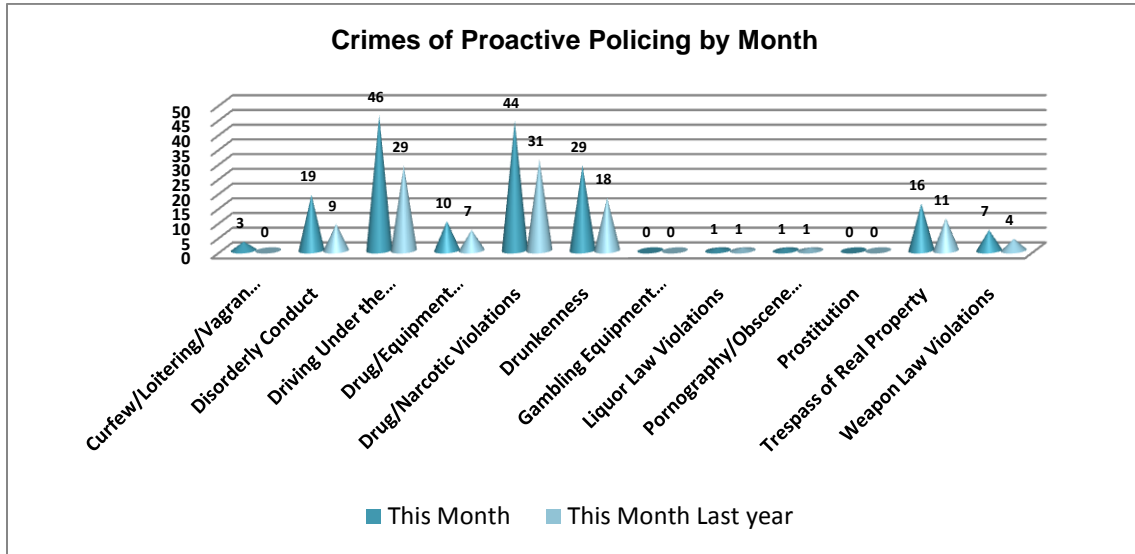


To date this year, 6,028 property offenses have occurred, up from 5,947 last year at this same time, only a 1% increase. Again, credit card fraud is up 35% and swindling is up 64%, but shoplifting and motor vehicle thefts are both down 29%.

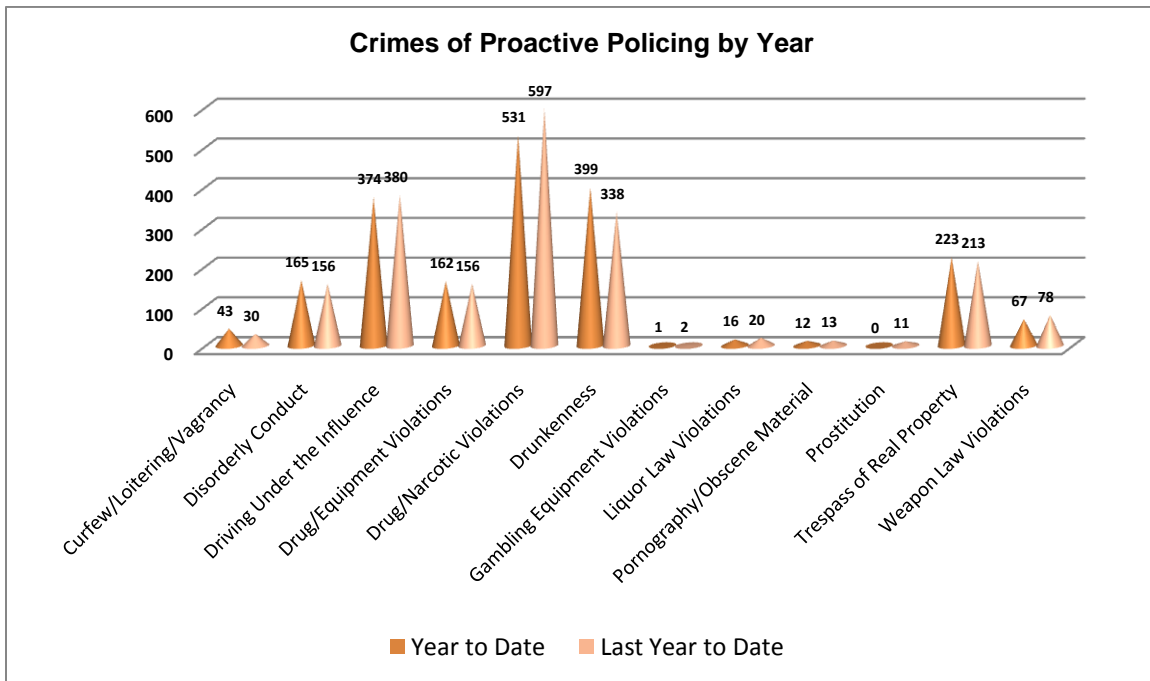


Crimes of Proactive Policing

Crimes of proactive policing are those crimes that result from police officers actively policing the streets to combat certain types of street crime. Twelve crimes fall under this category. A total of 176 offenses have occurred this month, a 59% increase from last December ($n = 111$). Curfew is up 43%, but gambling is down 50% and prostitution is down 100%.

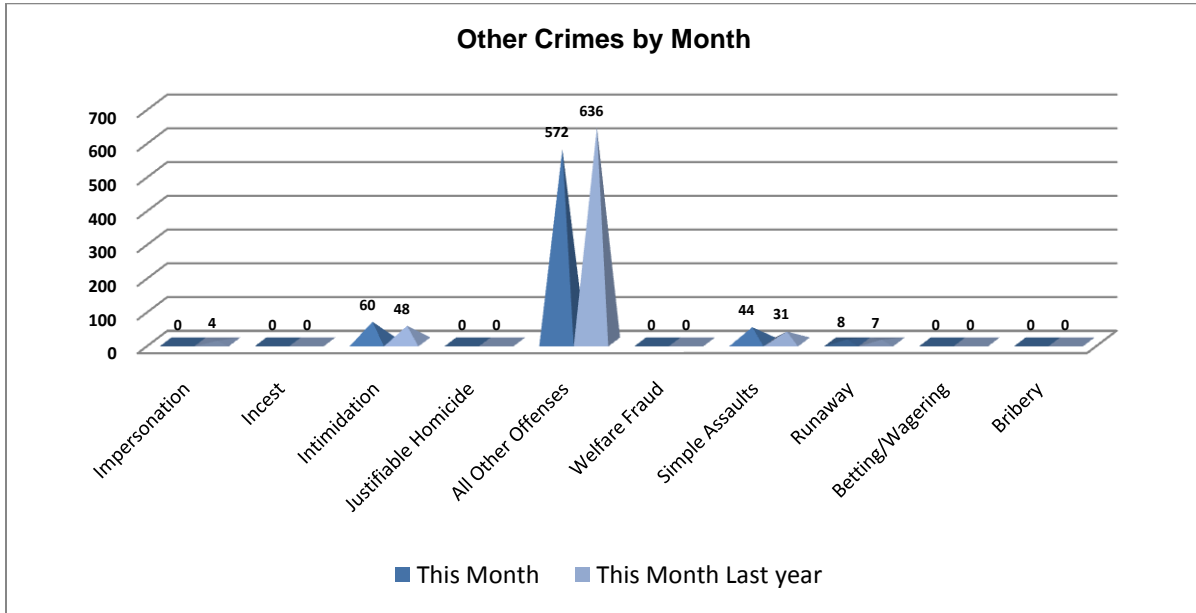


To date for the year, there have been 1,993 crimes of proactive policing, down by only 1 from last December, a 0% change.

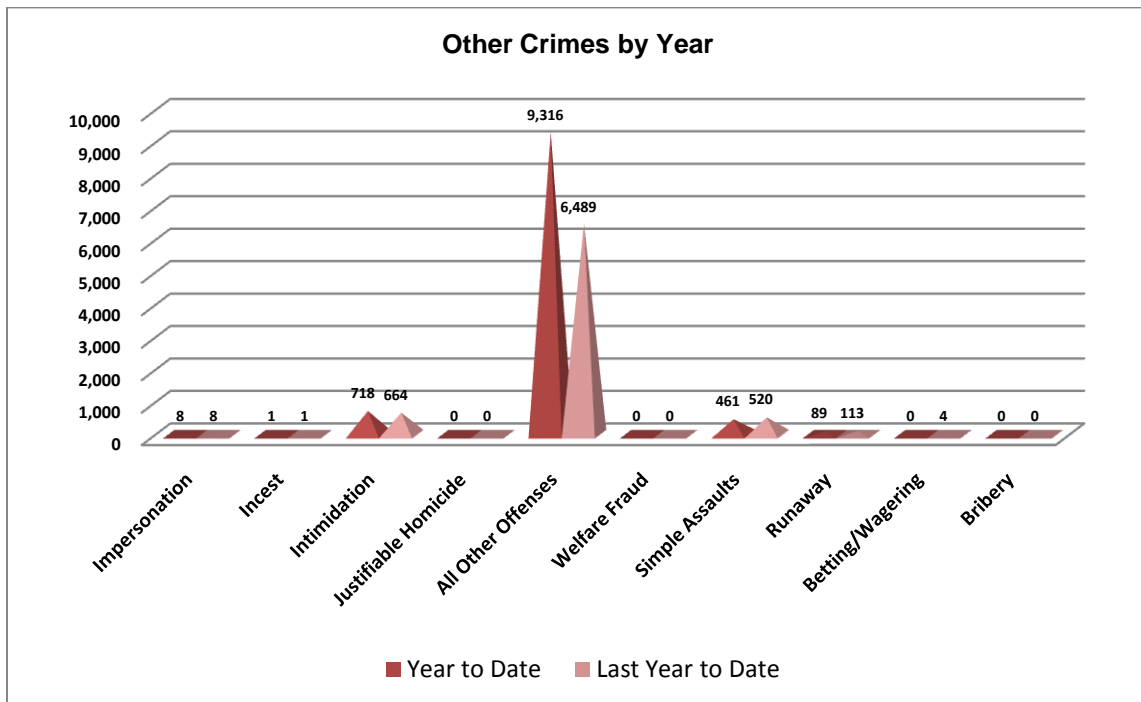


Other Crimes

There are 10 crimes that fall into the other crimes category. This month, there have been a total of 684, down from 726 last December, a 6% decrease.

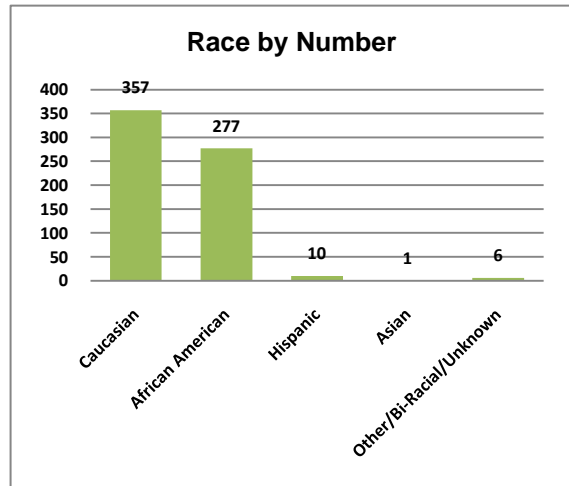
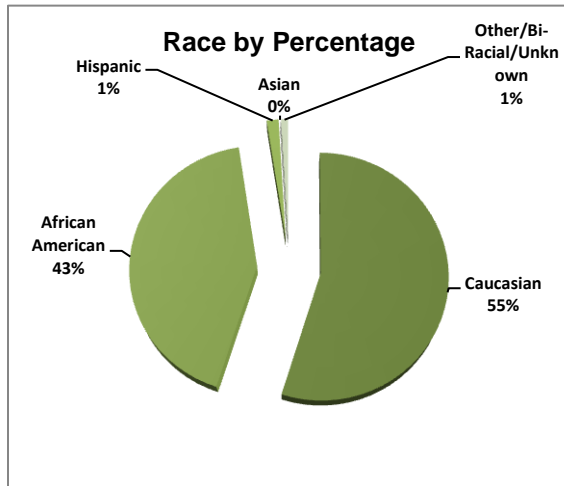
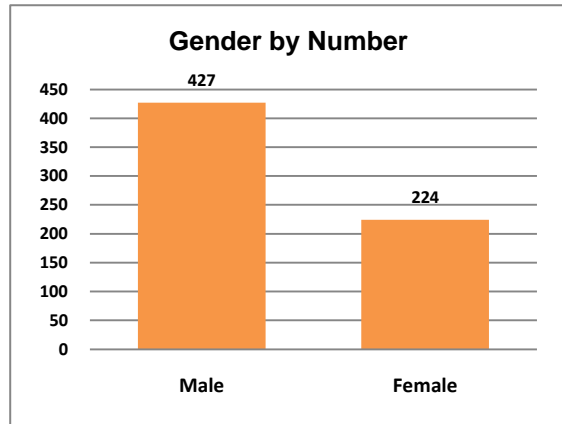
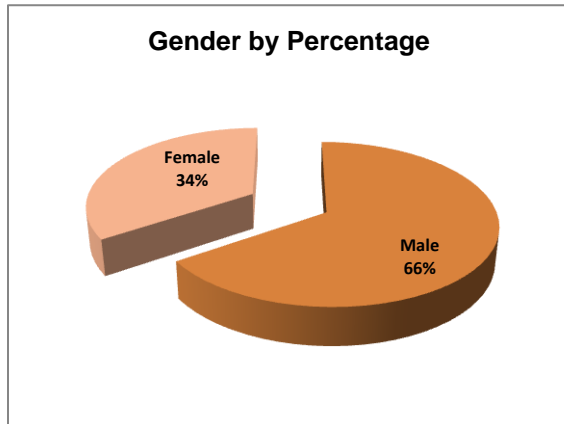


To date this year, there have been 10,593 other crimes, up from 7,799 last December, a 36% increase. However, it should be noted that this increase is not due to an actual increase in “all other offenses” as indicated, but an increase in the counting of “all other offenses” due to a change in the reporting of warrants.

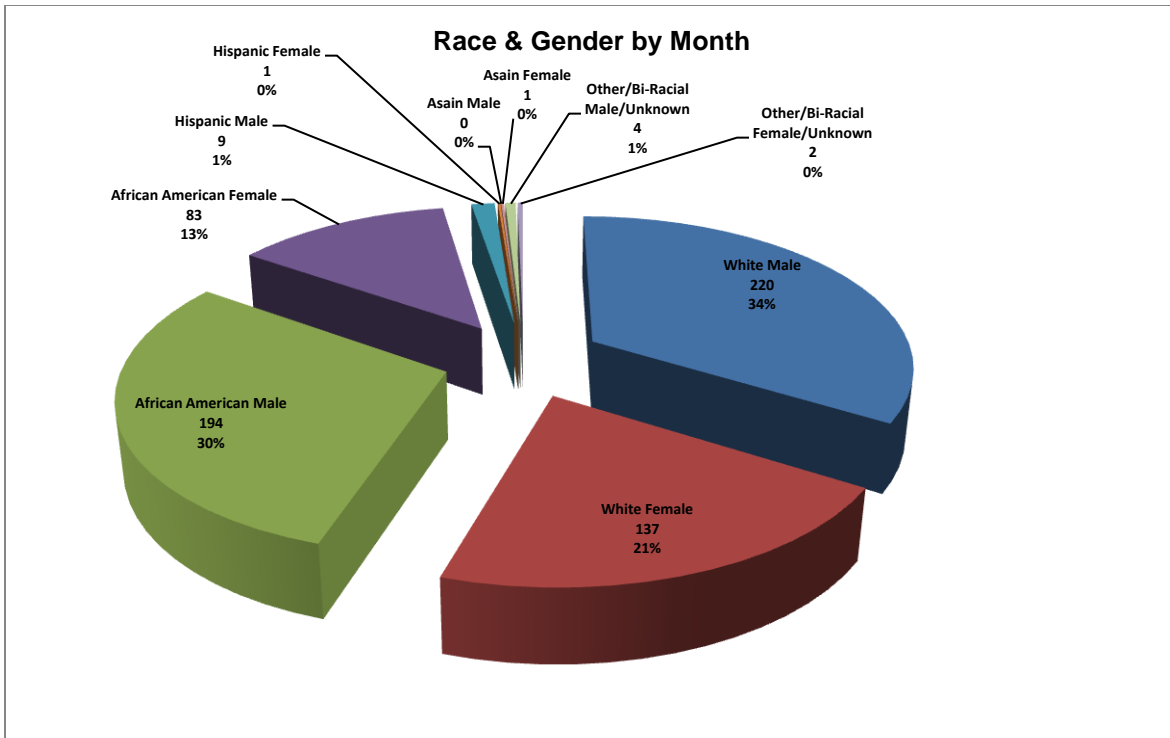


Arrest Demographics

This section will break down race and gender for the 651 arrests this month. The majority of offenders have been male ($n=427$), as opposed to female ($n=224$) and Caucasian ($n=357$) and African American ($n=277$) as opposed to Hispanic ($n=10$), Asian ($n=1$), or other/unknown/bi-racial ($n=6$).



Caucasian males make up the majority of offenders for the month of November, totaling 34% ($n = 220$). African American males account for 30% ($n = 194$) of the offenders this month. Caucasian females make up 21% ($n = 137$) and African American females make up 13% ($n = 83$). Hispanic males make up 1% ($n = 9$). There was a 1% of other/biracial male arrestees ($n=4$). There was 1 Hispanic female, 1 Asian female and 2 other/bi-racial female arrestees, insignificant percentage of the total of arestees. This distribution can be reviewed in the pie chart below (see page 9).



*Although the chart indicates a 0% for other/bi-racial female (n=1), hispanic female (n = 2), asian male (n=2), and asian female (n=2), the percentage is so small that excel rounds it to 0%.

Emergency 911

Also known as Public Safety Answering Point (PSAP), the Emergency 911 Division is responsible for answering all calls from public for emergency assistance, accessing the needed information to best assist, and then assigning the most efficient and effective emergency response. In addition, this division is responsible for setting priority call dispatching to field units including Police, Fire, and EMS. Emergency 911 also maintains all records for radio logs, calls for service, and other emergency service data collections.

Calls by Type	This Month	This Month Last Year	YTD	Last YTD	Change By Month	Change YTD
Land Line	841	868	10,646	11,493	-3%	-7%
Cell Phone	3,515	3,155	40,323	40,055	11%	1%
Admin Lines	15,266	15,291	186,530	185,835	0%	0%
TOTALS	19,622	19,314	237,499	237,383	2%	0%

Calls by Agency	This Month	This Month Last Year	YTD	Last YTD	Change By Month	Change YTD
Jonesboro PD Calls	5,409	5,468	72,593	81,255	-1%	-11%
Craighead Cty Sheriff	1,003	983	12,699	14,634	2%	-13%
Jonesboro Fire Dpt - dispatch	169	137	2,014	2,154	23%	-6%
Jonesboro Fire Dpt - Med Asst	95	135	1,361	2,188	-30%	-38%
Craighead Cty - Fire	47	42	903	648	12%	39%
Craighead Cty - 1st Responder	42	71	902	952	-41%	-5%
Emerson Ambulance	196	178	2,883	2,653	10%	9%
Medic One	333	308	3,551	3,564	8%	0%
Air Evac	0	1	12	4	-100%	200%
Coroner	2	2	31	25	0%	24%
ARK State Police	21	13	191	145	62%	32%
Jonesboro Animal Control	45	31	812	438	45%	85%
Wreckers Called	168	204	2,032	2,385	-18%	-15%
TOTALS	7,530	7,573	99,984	111,045	-1%	-10%

Calls by Municipality	This Month	This Month Last Year	YTD	Last YTD	Change By Month	Change YTD
Bay PD	37	132	1117	1836	-72%	-39%
Bono PD	167	182	2374	2557	-8%	-7%
Brookland PD	141	258	2289	2835	-45%	-19%
Caraway PD	72	94	1154	979	-23%	18%
Cash PD	24	57	583	732	-58%	-20%
Egypt PD	12	6	264	262	100%	1%
Lake City PD	71	207	1400	1475	-66%	-5%
Monette PD	126	98	1671	1824	29%	-8%
TOTALS	650	1,034	10,852	12,500	-37%	-13%

Uniform Patrol Division

The UPD is responsible for responding to calls into the Emergency – 911 Division by civilians and are normally the first responders. Jonesboro is divided into 6 patrol districts. Officers from UPD are assigned to a district and work the same district every shift. In addition, when a Traffic Officer is not available, a UPD Officer will respond to traffic accidents and assist in directing traffic when necessary.

Incidents	This Month	This Month Last Year	YTD	Last YTD	Change By Month	Change YTD
Street Accidents	131	150	1,268	1,289	-13%	-2%
Private Property Accidents	39	45	563	541	-13%	4%
Traffic Citations	538	834	8,285	7,273	-35%	14%
DWI	42	31	265	297	35%	-11%
Mis. Arrests	2,253	2,230	22,241	18,591	1%	20%
Felony Arrests	128	198	1,701	1,658	-35%	3%
Public Intoxication Arrests	9	12	104	114	-25%	-9%
Calls For Service	7,103	6,865	86,568	77,838	3%	11%
Alarms	247	243	2,731	2,744	2%	0%
Parking Citations	1	14	22	50	-93%	-56%
Written Warnings	601	631	9,611	5,721	-5%	68%
TOTALS	11,092	11,253	133,359	116,116	-1%	15%
Patrol Miles	58,382	65,197	743,839	720,439	-10%	3%
Hours Worked	9,965	10,446	120,217	125,967	-5%	-5%

Prowl

The Prowl unit is a uniformed street crimes unit specializing in criminal patrol, narcotics enforcement, gang investigation, and prostitution activity. The unit conducts directed patrols, investigates citizen complaints of street-level criminal activity, and directly assists the 2nd Judicial Drug Task Force. PROWL also assists any division within the Jonesboro Police Department at any time when needed.

Incidents	This Month	This Month Last Year	YTD	Last YTD	Change By Month	Change YTD
Street Accidents	0	0	0	1	N/C	-100%
Private Property Accidents	0	0	1	0	N/C	N/C
Traffic Citations	20	22	363	249	-9%	46%
DWI	0	0	1	1	N/C	0%
Mis. Arrests	90	67	1,099	1,175	34%	-6%
Felony Arrests	33	41	336	458	-20%	-27%
Drug Arrests	35	21	339	393	67%	-14%
Public Intoxication Arrests	0	0	0	0	N/C	N/C
Calls For Service	85	109	1,095	866	-22%	26%
Alarms	0	0	0	0	N/C	N/C
Parking Citations	0	0	0	0	N/C	N/C
Written Warnings	12	18	267	225	-33%	19%
Assists	0	0	0	0	N/C	N/C
TOTALS	275	278	3,501	3,368	-1%	4%
Value of Drugs Seized	\$4,000	\$3,090	\$78,268	\$176,251	29%	-56%
Value of Assets Seized	0	1,270	66,160	98,653	-100%	-33%
Patrol Miles	4,600	4,900	60,800	62,735	-6%	-3%

Criminal Investigative Division

The CID is responsible for conducting follow-up investigations into criminal acts reported to the Jonesboro Police Department. The primary goal is to collect and present evidence that conclusively leads to a successful arrest. Additionally, CID is charged with clearing additional crimes, recovering stolen property, preventing additional crimes, and gathering intelligence information.

Investigations	This Month	This Month Last Year	YTD	Last YTD	Change By Month	Change YTD
Criminal Investigations Assigned	71	78	1056	1107	-9%	-5%
Criminal Investigations Closed	74	68	1000	923	9%	8%
Cleared by Arrests	42	37	571	477	14%	20%
Unfounded	11	9	106	124	22%	-15%
Exceptionally Cleared	12	9	168	191	33%	-12%
Filed With Prosecutors Office	7	3	78	46	133%	70%
TOTALS	217	204	2979	2868	6%	4%

Crimes Against Persons	This Month	This Month Last Year	YTD	Last YTD	Change By Month	Change YTD
Criminal Investigations Assigned	20	11	225	246	82%	-9%
Criminal Investigations Closed	24	13	241	249	85%	-3%
Cleared by Arrests	15	11	142	155	36%	-8%
Unfounded	3	1	15	29	200%	-48%
Exceptionally Cleared	4	1	49	54	300%	-9%
Filed With Prosecutors Office	2	0	17	9	N/C	89%
TOTALS	68	37	689	742	84%	-7%

Property Crimes	This Month	This Month Last Year	YTD	Last YTD	Change By Month	Change YTD
Criminal Investigations Assigned	44	59	736	741	-25%	-1%
Criminal Investigations Closed	39	42	603	527	-7%	14%
Cleared by Arrests	24	24	377	301	0%	25%
Unfounded	5	8	70	79	-38%	-11%
Exceptionally Cleared	8	8	110	120	0%	-8%
Filed With Prosecutors Office	2	2	46	27	0%	70%
TOTALS	122	143	1942	1795	-15%	8%

Crimes Against Children	This Month	This Month Last Year	YTD	Last YTD	Change By Month	Change YTD
Criminal Investigations Assigned	5	4	64	61	25%	5%
Criminal Investigations Closed	9	3	79	57	200%	39%
Cleared by Arrests	3	2	35	18	50%	94%
Unfounded	3	0	22	17	N/C	29%
Exceptionally Cleared	0	0	7	10	N/C	-30%
Filed With Prosecutors Office	3	1	7	2	200%	250%
TOTALS	23	10	214	165	130%	30%

Warrants

The Warrants Division is responsible for serving warrants, criminal summonses, and subpoenas that are issued by the District Court. On city court days, the Warrants Division provides a bailiff for court and a transport officer. In addition, this Division is responsible for transporting wanted persons arrested in other jurisdictions back to Jonesboro. The STEP program operates within this division and is a grant-funded operation in which officers can get paid overtime to enforce the safety belt law.

Arrests	This Month	This Month Last Year	YTD	Last YTD	Change By Month	Change YTD
Misdemeanor	978	829	14174	8653	18%	64%
Felony	0	0	6	8	N/C	-25%
Total Arrests	978	829	14180	8661	18%	64%

Warrants by Activity	This Month	This Month Last Year	YTD	Last YTD	Change By Month	Change YTD
Subpoenas	415	408	4589	5814	2%	-21%
Commitments	1	4	40	40	-75%	0%
Traffic Citations	0	4	17	8	-100%	113%
Complaints	0	0	0	0	N/C	N/C
Assist	0	0	0	0	N/C	N/C
Alarms	0	0	0	0	N/C	N/C

Hours by Activity	This Month	This Month Last Year	YTD	Last YTD	Change By Month	Change YTD
SI Criminal	193.5	173.67	2770.87	1997.38	11%	39%
Court	132	148.17	1515.58	1190.51	-11%	27%
Prisoner Transport	29.5	15.25	346.67	872.42	93%	-60%

Hours Worked	This Month	This Month Last Year	YTD	Last YTD	Change By Month	Change YTD
Regular Hours Worked	572	538	7737.5	6538.5	6%	18%
Overtime Hours Worked	2.5	9.5	65.5	46.5	-74%	41%
TOTAL Hours Worked	574.5	547.5	7803	6585	5%	18%

Mileage	This Month	This Month Last Year	YTD	Last YTD	Change By Month	Change YTD
Total Mileage	2295	2549	36253	27191	-10%	33%

STEP	This Month	This Month Last Year	YTD	Last YTD	Change By Month	Change YTD
DWI Arrest	1	1	12	2	0%	500%
DUI Arrest	0	0	0	0	N/C	N/C
Traffic Citations	70	92	2084	1351	-24%	54%
Felony Arrests	0	0	2	1	N/C	100%
Drug Arrests	0	0	0	0	N/C	N/C
Hours Worked	51	126.5	1593.5	2187.25	-60%	-27%
Miles Driven	446	996	9362	9568	-55%	-2%

Drug Task Force

The DTF is responsible for investigating major drug traffickers in the area, including all types of illegal drugs. They work closely with local, state, and federal agencies to eradicate drugs from the community.

INVESTIGATIONS	This Month	This Month Last Year	YTD	Last YTD	Change By Month	Change YTD
Opened	16	17	314	342	-6%	-8%
Closed	18	24	274	310	-25%	-12%
TOTAL	20	42	358	406	-52%	-12%

With Nexus to Jonesboro	This Month	This Month Last Year	YTD	Last YTD	Change By Month	Change YTD
Opened	18	18	283	361	0%	-22%
Closed		0		0	N/C	N/C
TOTAL	18	18	283	361	0%	-22%

Outside Jonesboro (No Known Nexus)	This Month	This Month Last Year	YTD	Last YTD	Change By Month	Change YTD
Opened	0	0	17	17	N/C	0%
Closed	0	0		0	N/C	N/C
TOTAL	0	0	17	17	N/C	0%

ASSISTANCE RENDERED	This Month	This Month Last Year	YTD	Last YTD	Change By Month	Change YTD
Assist to Outside Agencies	1	4	31	48	-75%	-35%
Assist to Jonesboro UPD/CID	15	8	178	202	88%	-12%

ARRESTS	This Month	This Month Last Year	YTD	Last YTD	Change By Month	Change YTD
Miscellaneous	3	6	62	122	-50%	-49%
Felony	23	33	400	326	-30%	23%
Marijuana	1	2	76	74	-50%	3%
Cocaine	1	1	21	20	0%	5%
Crack Cocaine	0	2	42	57	-100%	-26%
Methamphetamine/ICE	6	3	97	79	100%	23%
LSD	0	0	0	0	N/C	N/C
Ecstasy (MDMA or Other Designer Drug)	0	1	5	10	-100%	-50%
Prescription	1	0	19	40	N/C	-53%
Opiates (Heroin,Opium)	0	0	0	9	N/C	-100%
Labs	1	3	27	31	-67%	-13%
All Other Drug Offenses	0	0	0	1	N/C	-100%

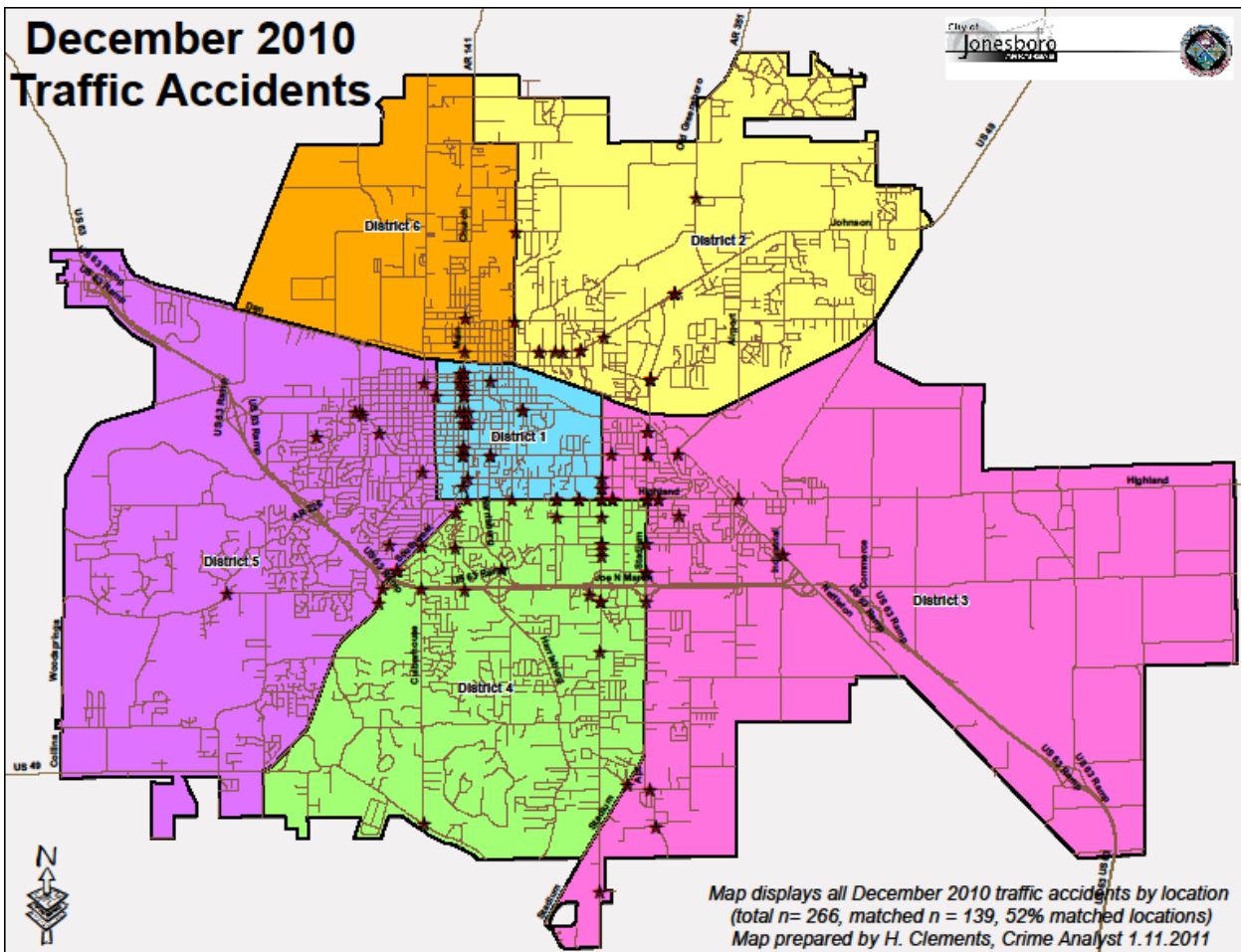
ASSET FORFEITURE	This Month	This Month Last Year	YTD	Last YTD	Change By Month	Change YTD
Vehicles Seized(No.)	0	0	5	5	N/C	0%
Value of Assets Seized(Includes Value of vehicles)	\$100	\$0	\$56,257	\$94,902	N/C	-41%
Asset Value Awarded to Jonesboro PD (State)		\$0	\$0	\$0	N/C	N/C
Asset Value Awarded to Jonesboro PD (Federal)		\$0	\$0	\$0	N/C	N/C
Asset Value Awarded to Jonesboro PD (Total)		\$0	\$0	\$0	N/C	N/C

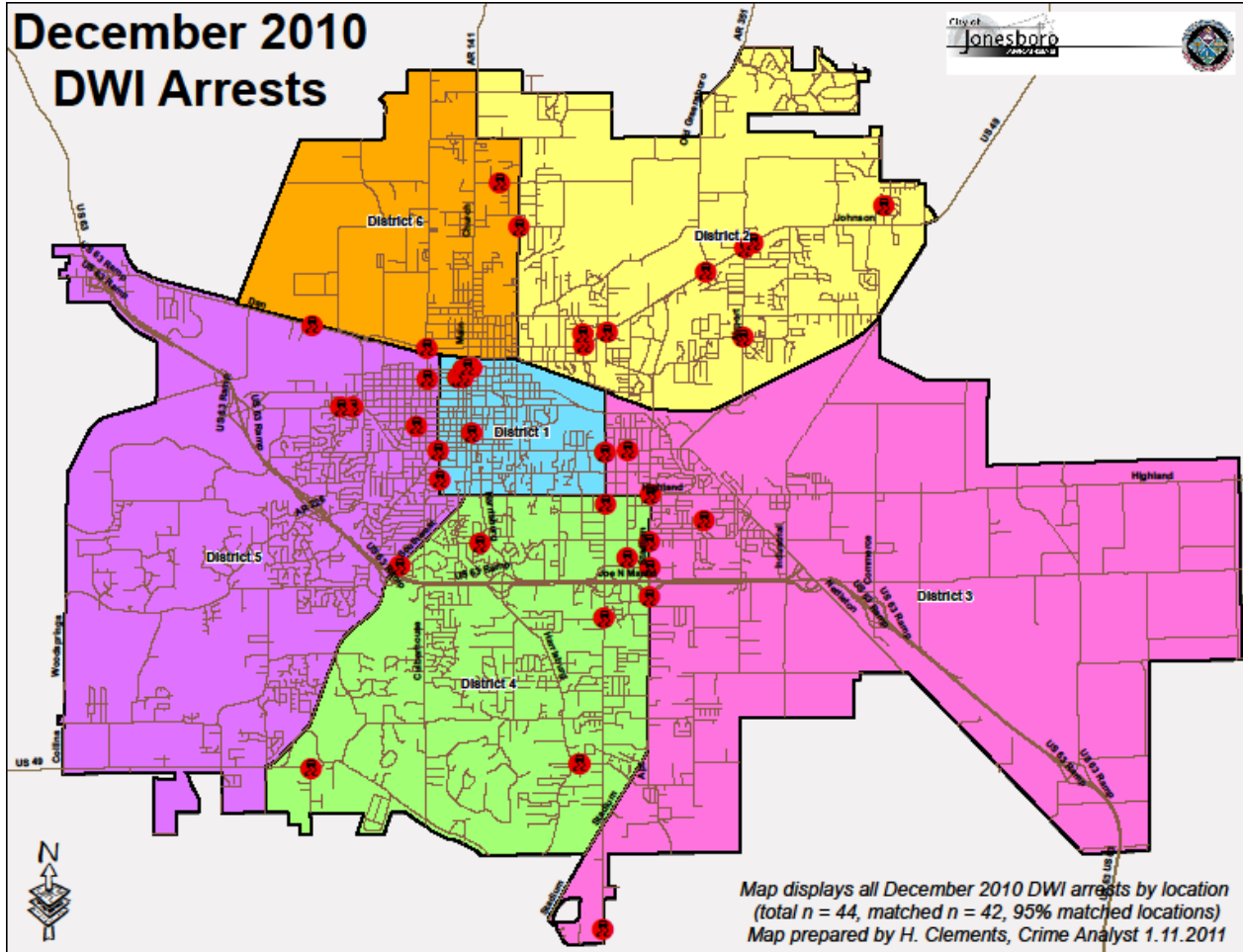
ARRESTS DEMOGRAPHY	This Month	This Month Last Year	YTD	Last YTD	Change By Month	Change YTD
White	12	11	156	195	9%	-20%
African American	3	10	80	121	-70%	-34%
Latino	0	0	29	22	N/C	32%
Asian	0	0	1	0	N/C	N/C
Other/Bi-Racial	0	0	0	0	N/C	N/C
Male	13	17	203	239	-24%	-15%
Female	2	4	49	73	-50%	-33%
White Male	10	9	118	127	11%	-7%
White Female	2	2	41	56	0%	-27%
African American Male	3	8	77	98	-63%	-21%
African American Female	0	2	5	20	-100%	-75%
Latino Male	0	0	24	19	N/C	26%
Latino Female	0	0	3	3	N/C	0%
Asian Male	0	0	1	0	N/C	N/C
Asian Female	0	0	0	0	N/C	N/C
Other/Bi-Racial Male	0	0	0	0	N/C	N/C
Other/Bi-Racial Female	0	0	0	0	N/C	N/C

Traffic

Comprised of three motor units and three Chargers, the Traffic Enforcement Unit responds to traffic accidents and provides increased enforcement in particularly challenging areas. This unit also provides extra coverage for specific congestion problems and special events in the community. Last, they work details targeting specific issues, such as DWI enforcement and traffic safety checkpoints.

Incidents	This Month	This Month Last Year	YTD	Last YTD	Change By Month	Change YTD
Street Accidents	142	106	1574	1494	34%	5%
Private Property Accidents	43	27	442	469	59%	-6%
Traffic Citations	120	236	2689	3210	-49%	-16%
DWI	7	1	37	36	600%	3%
Mis. Arrests	29	24	252	283	21%	-11%
Felony Arrests	0	2	38	16	-100%	138%
Drug Arrests	0	0	0	0	N/C	N/C
Public Intoxication Arrests	0	0	2	0	N/C	N/C
Calls For Service	253	203	2808	2492	25%	13%
Alarms	3	0	23	20	N/C	15%
Parking Citations	0	0	0	27	N/C	-100%
Written Warnings	118	20	1320	93	490%	1319%
TOTALS	715	619	9185	8140	16%	13%
Value of Asstes Seized	\$0	\$0	\$0	\$0	N/C	N/C
Patrol Miles	5,092	3,692	62,516	60,493	38%	3%
Hours Worked	787	622	9248.5	9422	27%	-2%





Parking Enforcement

The Parking Enforcement Division is responsible for enforcing parking laws in the downtown area. This service provides a safe and convenient parking situation for the public.

CITATIONS ISSUED	This Month	This Month Last Year	YTD	Last YTD	Change By Month	Change YTD
Citations	51	65	570	946	-22%	-40%
Verbal Warnings	0	0	0	0	N/C	N/C

MINUTES BY ACTIVITY	This Month	This Month Last Year	YTD	Last YTD	Change By Month	Change YTD
Office	500	975	10,855	17,365	-49%	-37%
Admin(Non-Office)	585	1,020	10,065	11,355	-43%	-11%
Community	0	0	0	300	N/C	-100%
Training	0	0	0	0	N/C	N/C
Patrol	5,755	4,725	47,440	54,070	22%	-12%

Animal Control

The Animal Control Division is responsible for educating the public on safe and humane issues regarding animal treatment, enforcing all animal laws and ordinances, assisting the public in resolving animal issues, and protecting the safety and welfare of the citizens and animals in this community.

Incidents	This Month	This Month Last Year	YTD	Last YTD	Change By Month	Change YTD
Barking Complaints	8	9	105	116	-11%	-9%
Bite Reports	5	7	106	133	-29%	-20%
Door Hangers	20	33	373	324	-39%	15%
Welfare Checks	54	62	887	763	-13%	16%
Advised of Rights	288	164	3,153	2,516	76%	25%
Incident Reports	1	4	61	72	-75%	-15%
Gone on Arrival	22	60	478	720	-63%	-34%
Complaints	523	515	7,136	6,828	2%	5%
Desk Complaints	867	853	10,310	9,101	2%	13%
Captured Dogs	96	125	1,417	1,323	-23%	7%
Captured Cats	4	1	124	137	300%	-9%
Captured Wildlife	6	5	311	259	20%	20%
Chemical Captures	4	16	74	98	-75%	-24%
Traps	6	12	208	237	-50%	-12%
Deceased Animals	47	71	799	987	-34%	-19%
Assist J.P.D.	3	5	75	58	-40%	29%
Assist C.S.O.	1	0	3	10	N/C	-70%
Public Relations	425	472	5,955	2,906	-10%	105%
CITATIONS ISSUED	75	22	600	258	241%	133%
WARNINGS ISSUED	27	33	467	316	-18%	48%
Physical Arrests	1	0	11	11	N/C	0%
City Warrants Served	6	0	35	15	N/C	133%
County Warrants Served	0	0	1	0	N/C	N/C
Euthanized	35	63	667	791	-44%	-16%
Euthanized for Humane Society	0	0	0	72	N/C	-100%
Deceased Animals Landfill lbs.	3,020	4,360	43,610	51,800	-31%	-16%
Wildlife Euthanized	6	5	311	259	20%	20%
Sent to Rescue Centers	2	10	124	116	-80%	7%
Adoptions	39	30	397	258	30%	54%
Miles Driven	8,869	7,560	91,129	100,357	17%	-9%

Fleet Maintenance

The Fleet Maintenance is responsible for all of the police vehicle maintenance upkeep, cleanliness, and purchasing. In addition, this Division handles most of the purchasing of equipment, supplies, and uniforms for all of the Police Department.

Repair Costs by Model Year	This Month	This Month Last Year	YTD	Last YTD	Change By Month	Change YTD
95-99	\$0.00	\$0.00	\$583.68	\$1,155.90	N/C	-50%
2000	\$0.00	\$0.00	\$550.38	\$2,324.28	N/C	-76%
2001	\$0.00	\$0.00	\$323.26	\$427.80	N/C	-24%
2002	\$0.00	\$0.00	\$2,054.11	\$0.00	N/C	N/C
2003	\$223.25	\$0.00	\$800.36	\$535.11	N/C	50%
2004	\$928.37	\$1,288.14	\$10,267.50	\$7,798.47	-28%	32%
2005	\$5,659.52	\$2,576.68	\$16,465.12	\$12,676.34	120%	30%
2006	\$897.77	\$2,926.79	\$37,203.04	\$20,131.04	-69%	85%
2007	\$302.56	\$183.99	\$13,407.44	\$4,676.41	64%	187%
2008	\$662.00	\$22.46	\$2,070.42	\$3,994.02	2847%	-48%
2009	\$60.26	\$0.00	\$1,062.68	\$6,175.71	N/C	N/C
2010	\$0.00	n/a	\$311.95	n/a	N/C	N/C
TOTALS	\$8,733.73	\$6,998.06	\$85,099.94	\$59,895.08	25%	42%

Routine Preventative Maintenance by Model Year	This Month	This Month Last Year	YTD	Last YTD	Change By Month	Change YTD
95-99	\$75.55	\$0.00	\$149.05	\$188.30	N/C	-21%
2000	\$0.00	\$0.00	\$29.00	\$269.30	N/C	-89%
2001	\$0.00	\$0.00	\$110.24	\$1,221.96	N/C	-91%
2002	\$0.00	\$0.00	\$92.50	\$0.00	N/C	N/C
2003	\$134.00	\$20.00	\$1,119.15	\$993.50	570%	13%
2004	\$345.99	\$333.50	\$5,923.92	\$5,018.85	4%	18%
2005	\$111.85	\$616.58	\$7,704.19	\$7,424.17	-82%	4%
2006	\$2,549.03	\$2,419.43	\$21,068.96	\$19,115.76	5%	10%
2007	\$960.26	\$1,358.43	\$14,043.23	\$12,255.64	-29%	15%
2008	\$20.00	\$520.00	\$2,676.38	\$2,585.92	-96%	3%
2009	\$410.51	\$40.00	\$3,449.47	\$3,824.27	N/C	N/C
2010	\$0.00	n/a	\$2,022.50	n/a	N/C	N/C
TOTALS	\$4,607.19	\$5,307.94	\$58,388.59	\$52,897.67	-13%	10%

Records

The Records Division is responsible for providing administrative and clerical support to the department. Major responsibilities include entering the accident and incident reports and tickets into the records database management system, assisting the general public for report requests, performing criminal backgrounds, serving as a switchboard at times, performing validations, and setting up and managing the payment plans out of court.

RECORDS	This Month	This Month Last Year	YTD	Last YTD	Change By Month	Change YTD
Incident/Arrest Reports Processed	1,036	1,132	14,568	13,033	-8%	12%
Accident Reports Processed	265	267	2,812	2,779	-1%	1%
Citations Processed	2,982	3,440	48,358	40,998	-13%	18%
Warnings Processed	410	413	6,613	3,738	-1%	77%
Backgrounds	25	11	206	131	127%	57%
Fingerprints	39	63	830	1,025	-38%	-19%
Photos	0	4	15	25	-100%	-40%
Accident Requests	106	122	1,154	1,422	-13%	-19%
Accident Requests Online	163	194	1,958	2,004	-16%	-2%
TOTALS	5,026	5,646	76,514	65,155	-11%	17%

Professional Standards

The Office of Professional Standards, a unit within Administration, is charged with the compilation and updating of an extensive set of policies and procedures and providing a general

operations guideline and code of conduct for officers to follow. In the event that a member of the public does experience a negative interaction with an officer, mechanisms are in place for them to lodge a complaint. All complaints are reviewed and investigations completed in a timely manner.

	This Month	This Month Last Year	YTD	Last YTD	Change By Month	Change YTD
Opened (TOTAL)	5	4	68	66	25%	3%
Closed	4	4	67	66	0%	2%
Inquiries	4	4	65	61	0%	7%
Formal Investigations	0	0	2	5	N/C	-60%
Sustained	4	3	52	45	33%	16%
Not-Sustained	0	0	6	5	N/C	20%
Exhonerated	0	0	2	7	N/C	-71%
Unfounded	0	1	7	9	-100%	-22%