

# JONESBORO POLICE DEPARTMENT

## Annual Report 2014

Office of Crime Analysis & Criminal Intelligence  
1001 S Caraway Rd  
Jonesboro, AR 72401

### FOREWORD

#### Letter from Chief Rick Elliott

Dear Community Members;

The City of Jonesboro Police Department strives to ensure that all of our citizens are served in a professional, ethical, and equitable manner that respects individuals. We make every effort to protect our democratic ideals and system of government. We pursue greater accountability of officers, greater public share in decision making, and greater concern for civil rights and liberties.

Our reports are issued with the intention to inform our citizens and elected officials about our efforts and the subsequent results. In order to ensure uniformity in crime reporting, we utilize the standard format of the Federal Bureau of Investigation, the Uniform Crime Reporting (UCR) system. This standard format classifies criminal offenses into two categories, Part I and Part II crimes. These categories are then subcategorized and organized in a meaningful way.

As this report indicates, the department has been successful in its efforts to control criminal activity over the last ten years. In 2014, specifically, we are observing a drop in criminal activities. Both crime rate and count of offenses are down, despite population growth and other factors that typically adversely affect crime rates.

There have been several changes and updates throughout the department in 2014. This report presents this information by division and unit, along with each division and unit's progress for the year. This information will provide a more detailed picture of how each division and their units operate.

Our success in crime reduction is most likely attributed to advancement in proactive policing, improved investigative techniques, enhanced technology, research, and analysis. Foremost, our department would not be able to provide this outstanding level



of service were it not for the diligence of our dedicated group of men and women, who compose the Jonesboro Police Department. The JPD is proud to call these officers their own and is truly grateful for their loyalty, commitment, and service to the community of Jonesboro.

It is our honor to continue to protect and serve our community.

After you read this report, please do not hesitate to contact me with any questions and concerns.

Respectfully,

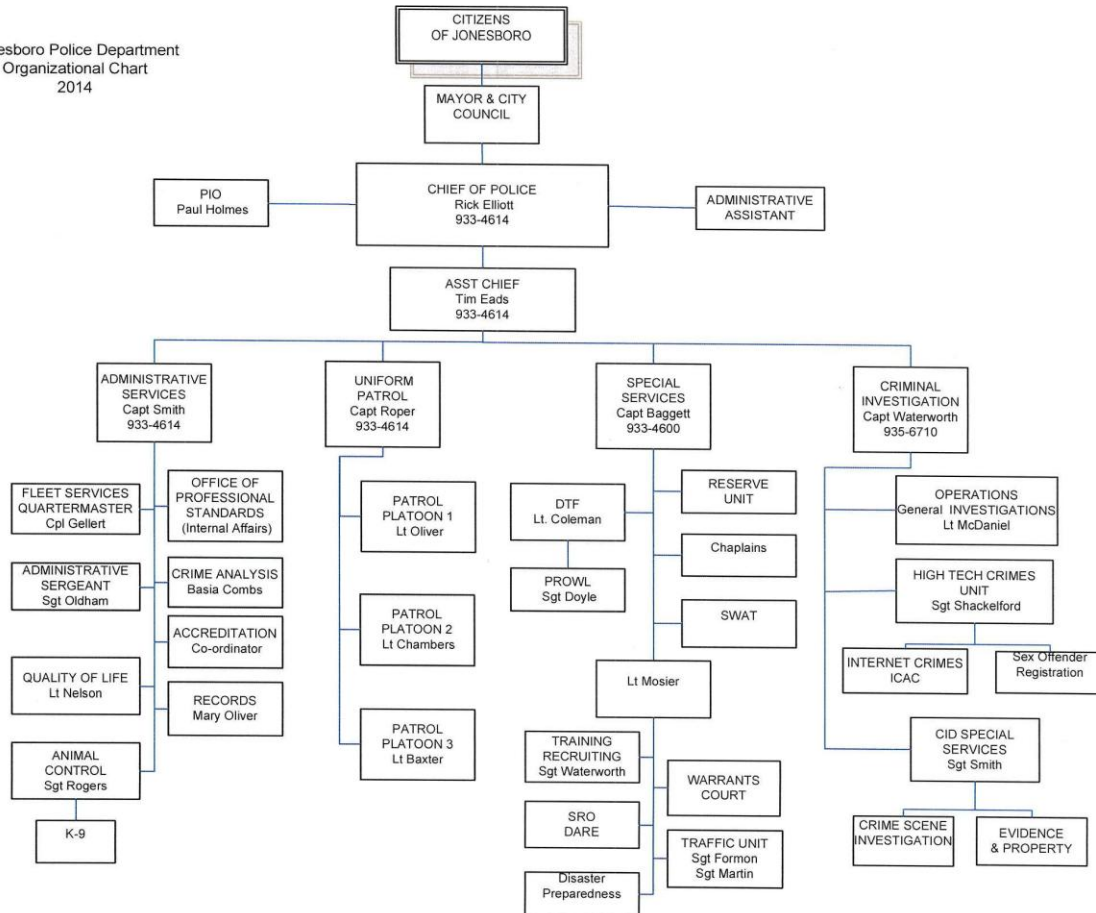
Rick Elliott  
Chief of Police  
Jonesboro, Arkansas

## Table of Contents

FOREWORD .....	1
JPD ORGANIZATIONAL CHART .....	4
MISSION STATEMENT .....	4
EXECUTIVE SUMMARY.....	4
JONESBORO CRIME 2012.....	5
FBI PART I AND PART II CRIMES.....	6
Crime Rates per 1,000 Population.....	9
Distribution of Part I & Part II Crimes .....	11
ADMINISTRATIVE SERVICES.....	17
Public Relations & Recruiting.....	17
Administrative Services Division.....	17
Crime Analysis Unit.....	18
Records.....	19
UNIFORM PATROL DIVISION.....	19
CRIMINAL INVESTIGATION DIVISION.....	23
Internet Crimes Unit.....	24
SPECIAL SERVICES DIVISION.....	28
Warrants Division.....	29
Drug Task Force.....	30
Prowl Unit.....	28
Traffic Unit.....	31
Quality of Life Unit.....	21
Animal Control.....	20
FLEET MAINTNANACE .....	22
EMERGENCY 911 .....	33
OFFICER AWARDS.....	34
CONCLUSSION.....	36

# JPD ORGANIZATIONAL CHAR

Jonesboro Police Department  
Organizational Chart  
2014



## MISSION STATEMENT

The City of Jonesboro Police Department shall strive to ensure that all of our citizens are served in a professional, ethical and equitable manner that respects individuals, protects our democratic ideals and system of government, pursues greater accountability of police, greater public share in decision making, and greater concern for civil rights and liberties.

## EXECUTIVE SUMMARY

The Jonesboro Police Department (JPD) continued to strive for excellence in community service once again in Year 2014. This report is a summation of the department’s progress and changes, along with the city’s crime data. It also includes ten year trend analysis of calls for service, population, arrests, and criminal activity. Crime Activity is broken down into Part I and II crime categories, as defined by the Federal Bureau of Investigation (FBI), and then by types of crimes falling under each category.

The department has been successful in its efforts to control criminal activity over the last ten years. The overall frequencies of criminal offenses decreased by -4%, compared to last year

data, while the crime rate per 1,000 population in 2014 compared to 2013 has decreased by -6%. Since 2005, the crime rate per 1,000 population has decreased by -2%, while the population of Jonesboro has increased by approximately 20% during the same period of time. This effort was achieved despite the 38% increase in the rate of calls for service per 1,000 population since 2005, while the rate of calls for service per 1,000 population has increased by 3%, compared to the previous year. Arrests by offense have decreased by -11% in 2014, while the arrests by person have decreased by -10%. Since 2005, however, arrests by person have increased by 86%, while arrests by offense have increased by 108%. This large increase in arrests from 2005 is due in part to policy changes in the way physical arrests are reported when arrests are made based on an arrest warrant (which were unreported in previous years) and policy changes requiring physical arrests for certain traffic offenses (that were also unreported in earlier years).

Every year, the department presents awards to officers who stand out in service to the community. These awards are Officer of the Year and JPD Medal of Valor, Officer's Medal, Meritorious Service Medal, Lifesaving Medal, and Officers of the quarter. These officers are acknowledged in the "Officer Awards" section of this report.

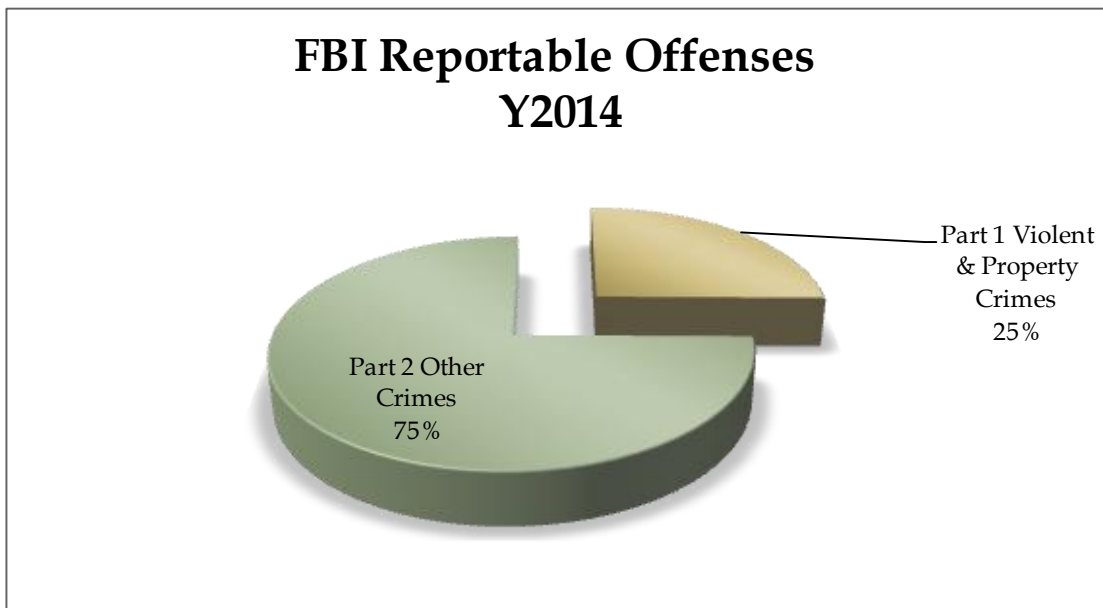
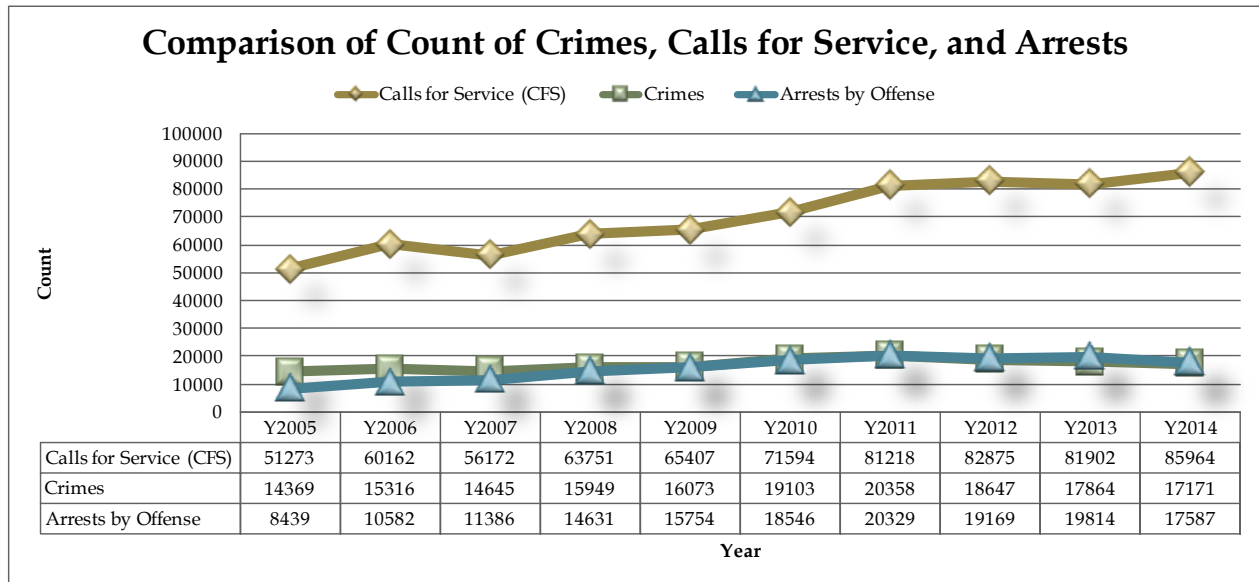
## JONESBORO CRIME 2014

The crime rate in the city of Jonesboro has remained relatively steady since 2005, but in spite of that constant trend, we do see a drop in crime rates per 1,000 population. Crime rates are calculated by number of crimes divided by estimated population for a given year and multiplied by a power of ten, in this case by a 1,000, in order to obtain the per 1,000 population rate. This approach is widely used by researchers and analysts to provide a more accurate reflection of criminal activity.

Frequencies of calls for service have increased by 68% since 2005 and the rate increased by 38% per 1,000 population. As for the percentage change from last year, calls for service have increased, up 5%. The rate of calls for service has also increased, up 3% per 1,000 population. The table below show count of calls for service and calculated rates.

	Y2005	Y2013	Y2014
<b>Calls For Service Count</b>	51273	81902	85964
<b>Calls For Service Rate per 1,000 Pop.</b>	857	1145	1178

Due to different reporting techniques prior to 2010, the reports on warrants issued vary from the present day. In order to avoid anomalies in data comparison since 2005 and to display an accurate reflection of crime rate in 2014, all warrants data prior to 2010 is not included in this report. There was a -11% decrease in warrants served in 2014 when compared to 2013, which is consistent with the drop in crime rates over the same period of time. Furthermore, in 2014 for every offense reported to the JPD, there was 1.01 arrests made, resulting in a -8% decrease for the ratio of arrests to offenses since 2013.



\*Note: NIBRIS reportable offenses only. Non NIBRIS reportable offenses  $n = 5,712$

### FBI PART I AND PART II CRIMES

There are 8 crimes that the FBI defines as Part I Crimes. They are 1) Violent Crimes: Murder/Homicide, Rape, Aggravated Assault, and Robbery and 2) Property Crimes: Larceny/Theft, Motor Vehicle Theft, Burglary/Breaking and Entering, and Arson. Part II Crimes include Other Crimes, which include Crimes of Proactive Policing and All Other Crimes.

The JPD has done an effective job over the last ten years reporting significant decreases in count of all Part I Crimes category but three types of offenses, Willful Homicide, Forcible Rape, and Arson (see table below for details). However, the frequencies of these offenses fall within the standard deviation from the ten year average (Willful Homicide  $\bar{X} = 3, \sigma = 1$ ; Forcible Rape  $\bar{X} =$

32,  $\sigma = 5$ ; Arson  $\bar{X} = 11$ ,  $\sigma = 4$ ), therefore, should not be viewed as a significant increase<sup>1</sup>. Overall, Part I Crimes count has decreased -24% in last ten years. Since the last year, Part I Crimes count has decreased by -2%. Although Part II Crimes count has increased by 48% in last ten years, we are seeing a -5% decrease, compared to the last year.

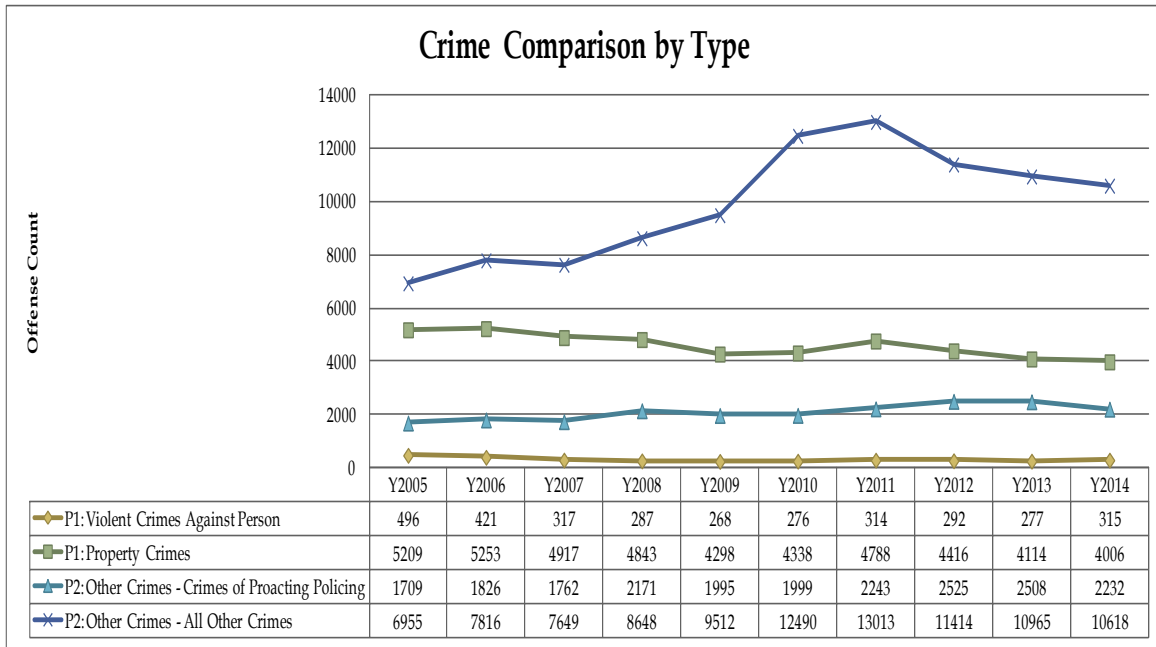
As frequencies of crime by itself do not depict the reality of by how much crime has increased or decreased, rates per 1,000 population, adjusted for population growth, have been calculated, as practiced by the FBI and other agencies. As for rates, we are seeing even greater decrease in Part I Crimes, -38% from ten years ago and -4% since last year. The increase in rate for Part II Crimes from ten years ago is lower than the increase of the total number for this category, up 22%. It needs to be noted that this increase is highly related to the overall increase in Crimes of Proactive Policing, a category of crime, when officers are proactively working to stop crime from occurring. However, the Part II Crime rate per 1,000 population has decreased since last year by -4%.

Part 1 Crimes (FBI UCR)	FBI UCR Crime Category	Y2005	Y2006	Y2007	Y2008	Y2009	Y2010	Y2011	Y2012	Y2013	Y2014	% change 2005 to 2014	% change 2013 to 2014
Violent Crimes Against Person	Willful Homicide	3	4	3	4	3	2	1	4	2	4	33%	100%
	Forcible Rape	29	36	34	30	28	29	43	24	34	35	21%	3%
	Aggravated Assaults	360	293	180	154	162	187	185	182	182	213	-41%	17%
	Robbery	104	88	100	99	75	58	85	82	59	63	-39%	7%
Property Crimes	Larceny/Theft	3518	3478	3310	3293	2936	2934	3313	3093	2972	3224	-8%	8%
	Motor Vehicle Theft	189	153	119	124	110	80	120	119	100	88	-53%	-12%
	Burglary	1496	1615	1476	1407	1242	1313	1340	1192	1029	686	-54%	-33%
	Arson	6	7	12	19	10	11	15	12	13	8	33%	-38%
<b>Total</b>	<b>5705</b>	<b>5674</b>	<b>5234</b>	<b>5130</b>	<b>4566</b>	<b>4614</b>	<b>5102</b>	<b>4708</b>	<b>4391</b>	<b>4321</b>		-24%	-2%
<b>Rate per 1000 population</b>		95	92	83	79	69	69	74	67	61	59	-38%	-4%
<b>Rate Per Capita</b>		0.10	0.09	0.08	0.08	0.07	0.07	0.07	0.07	0.06	0.06	-38%	-4%

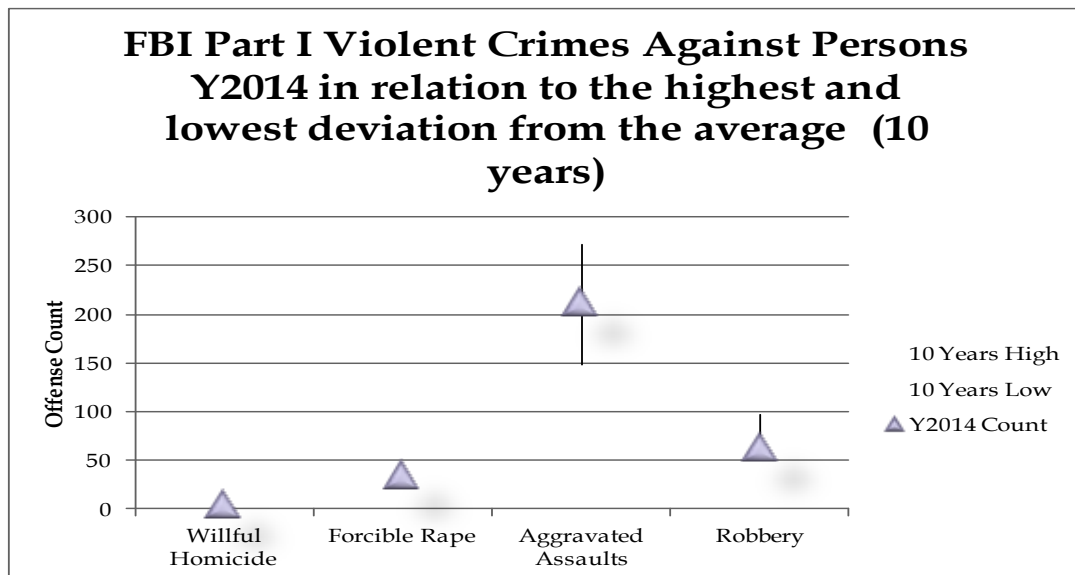
Part 2 Crimes (FBI UCR)	Crime Category	Y2005	Y2006	Y2007	Y2008	Y2009	Y2010	Y2011	Y2012	Y2013	Y2014	% change 2005 to 2014	% change 2013 to 2014
Other Crimes	Crimes of Proactive Policing	1709	1826	1762	2171	1995	1999	2243	2525	2508	2232	31%	-11%
	All Other Crimes	6955	7816	7649	8648	9512	12490	13013	11414	10965	10618	53%	-3%
<b>Total</b>		<b>8664</b>	<b>9642</b>	<b>9411</b>	<b>10819</b>	<b>11507</b>	<b>14489</b>	<b>15256</b>	<b>13939</b>	<b>13473</b>	<b>12850</b>	48%	-5%
<b>Part 2 Crimes Overall Rate per 1000 Population</b>		145	157	150	168	174	215	223	199	188	176	22%	-6%
<b>Part 2 Crimes Overall Rate per Capita</b>		0.14	0.16	0.15	0.17	0.17	0.22	0.22	0.20	0.19	0.18	22%	-6%

<sup>1</sup> The symbol  $\bar{X}$  represents a statistical symbol for mean, or expected value, also known as average.

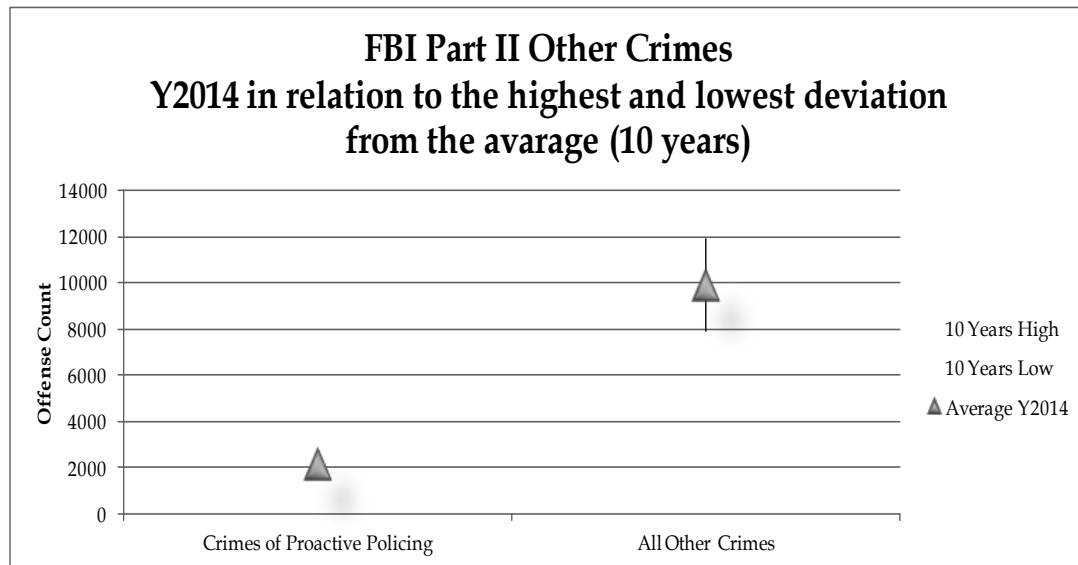
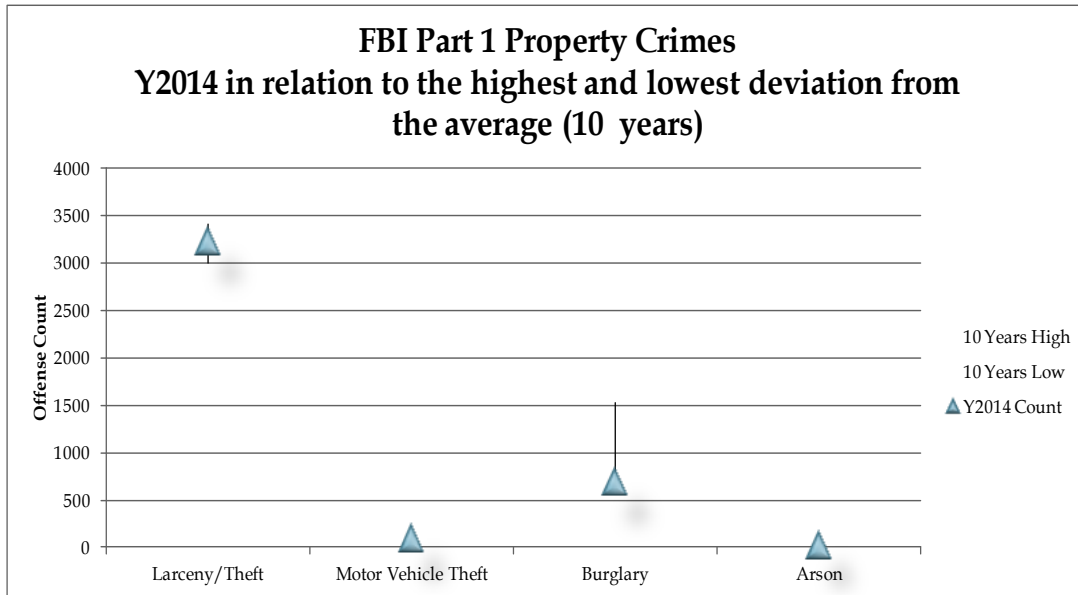
The symbol  $\sigma$  represents a statistical symbol for standard deviation, which shows how much variation or dispersion exists from the average.



The charts below and on the following page show 2014 crime frequencies in relation to range of standard distribution of the yearly average calculated between 2005 through 2014. As for the FBI Part I Violent Crimes against Person, we observe a decrease by -36%. The FBI Part I Property Crimes dropped by -23% within the last ten years. Part II Crimes of Proactive Policing have increased 31%, while All Other Crimes have increased by 53%, but both remain within the average distribution range, thus should not be viewed as significant increase. See charts below for details.





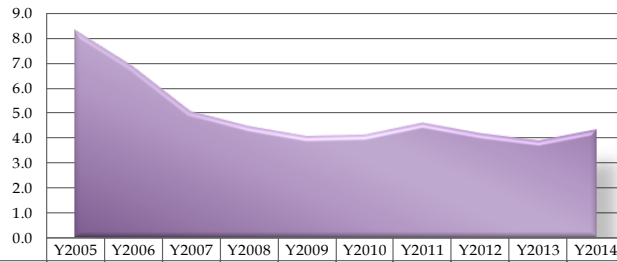


### Crime Rates per 1,000 Population

In order to provide yet another way of summarizing the distribution of crime in 2014, this section shows crime rates for every 1,000 persons in our community, which are detailed in the table below. See next page to view charts.

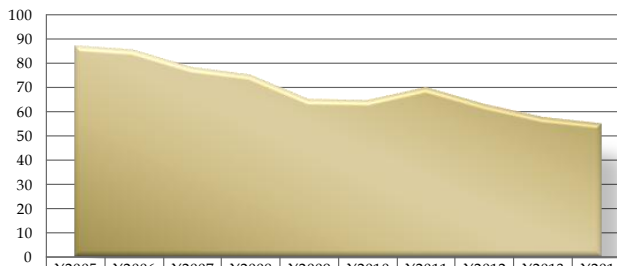
Crime Category	Y2005	Y2006	Y2007	Y2008	Y2009	Y2010	Y2011	Y2012	Y2013	Y2014	% change 2005 to 2014	% change 2013 to 2014
P1: Violent Crimes Rate per 1,000 Population	8.3	6.8	5.0	4.4	4.0	4.1	4.6	4.2	3.9	4.3	-48%	11%
P1: Property Crimes Rate per 1,000 Population	87	85	78	75	65	64	70	63	58	55	-37%	-5%
P2: Other Crimes - Crimes Of Proactive Policing Rate per 1,000 Pop.	29	30	28	34	30	30	33	36	35	31	7%	-13%
P2: Other Crimes - All Other Crimes Rate per 1,000 Population	116	127	122	134	144	186	190	163	153	146	25%	-5%
Total Crime Rate per 1,000 Population	240	249	233	247	243	284	297	266	250	235	-2%	-6%

### Part I Violent Crimes Against Person Rate per 1,000 Population



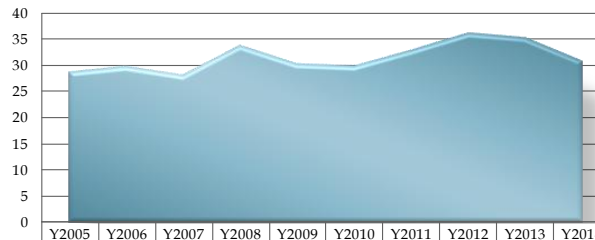
■ P1: Violent Crimes Rate per 1,000 Population

### Part I Property Crimes Rate per 1,000 Population



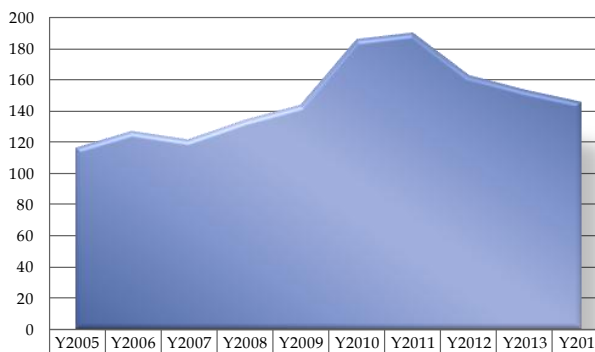
■ P1: Property Crimes Rate per 1,000 Population

### P II Other Crimes - Crimes Of Proactive Policing Rate per 1,000 Population



■ P2: Other Crimes - Crimes Of Proactive Policing Rate per 1,000 Pop.

### P II Other Crimes - All Other Crimes Rate per 1,000 Population



■ P2: Other Crimes - All Other Crimes Rate per 1,000 Population

Since 2005, the crime rate per 1,000 population has decreased overall for both the Violent Crimes against Person (-48%) and the Property Crimes (-37%). Although the crime rate for Violent Crimes against Person has increased by 11%, compared to 2013, rate for year 2014 remains within normal average distribution. The crime rate for Property Crimes has decreased by -5%, compared to 2013 and falls below normal average distribution, meaning the Property Crimes are decreasing significantly.

Since 2005, the crime rates per 1,000 population for both types of Part II Crimes have increased overall by 7% for Crimes of Proactive Policing and 25% for All Other Crimes. However, the crime rate for Crimes of Proactive Policing decreased by -13%, compared to 2013 and remains within normal average distribution. Moreover, the crime rate for All Other Crimes has decreased by -5%, compared to 2013, and it remains within normal average distribution as well.

### Distribution of Part I & Part II Crimes

Maps introduced in this section represent crime distribution by crime category and are divided into Part I and Part II Crimes (*see page 5 for definition of PI and PII crimes*).

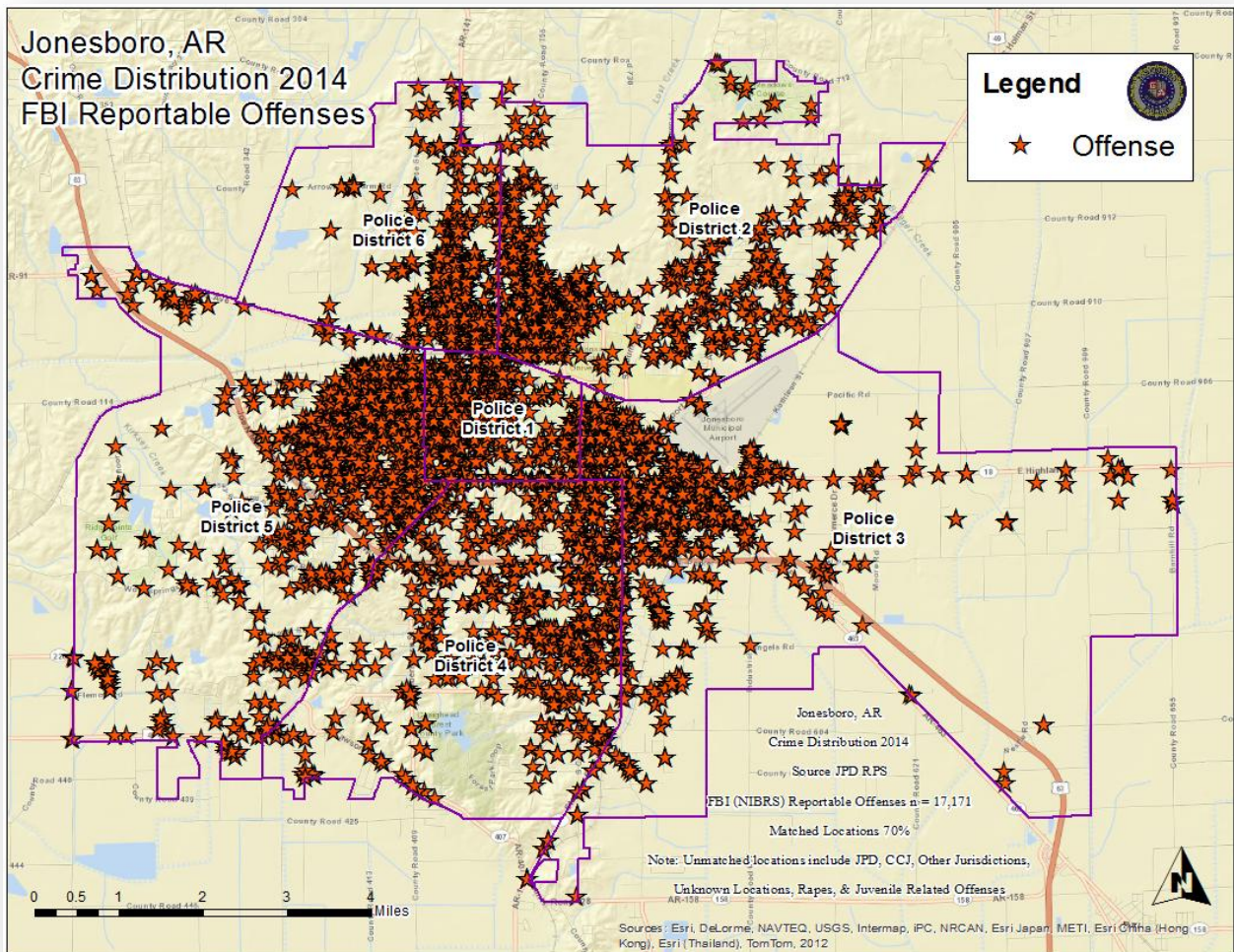


Figure I: Crime distribution by point in relation to Police Districts

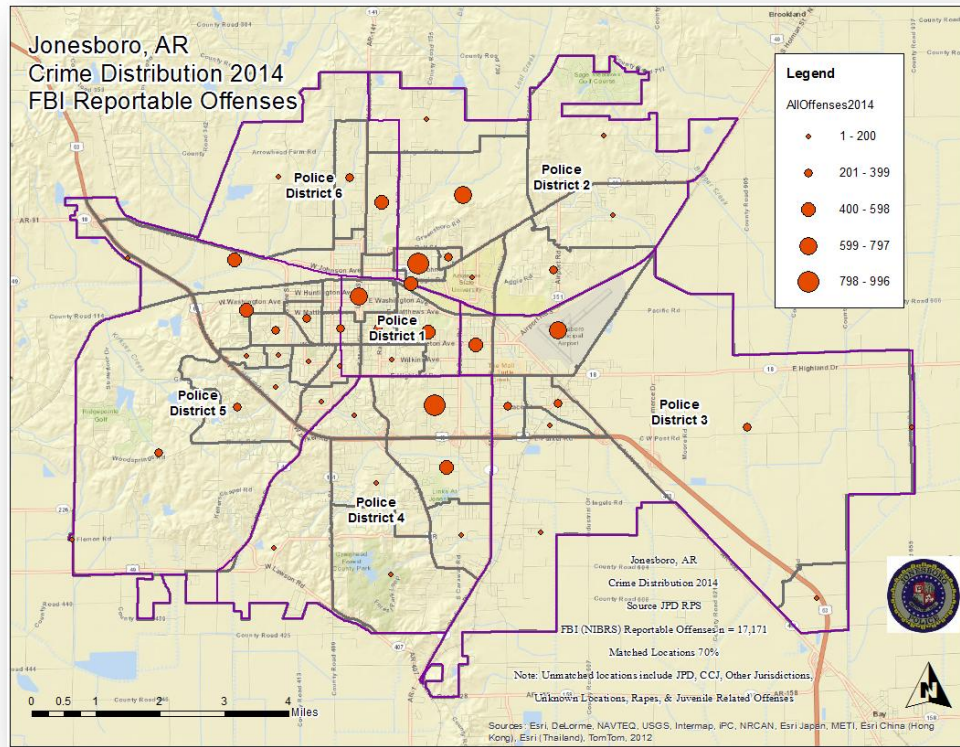


Figure 2: Crime distribution point clusters in relation to Police Districts & Census Blocks

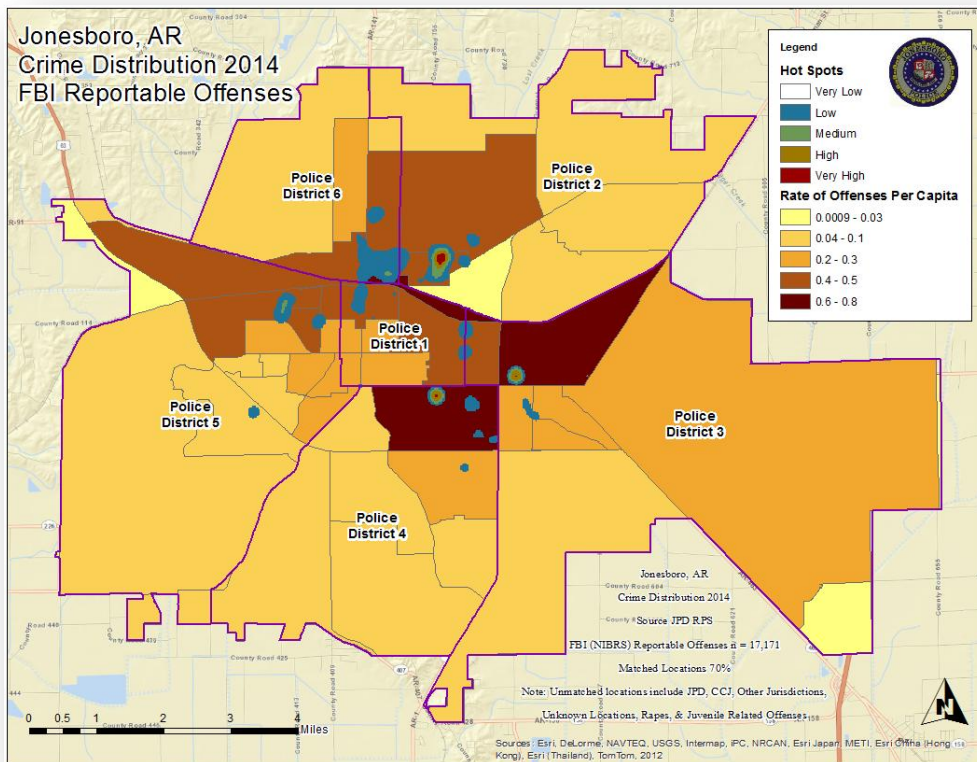


Figure 3: Crime rate density per Census Block

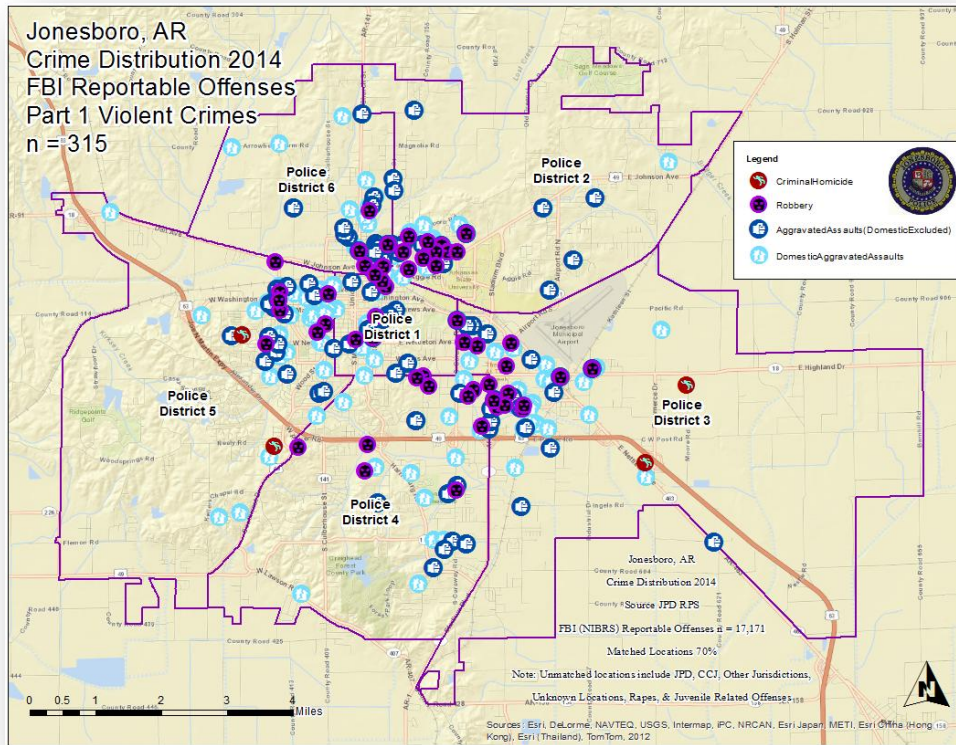


Figure 4: Crime distribution by point in relation to Police Districts

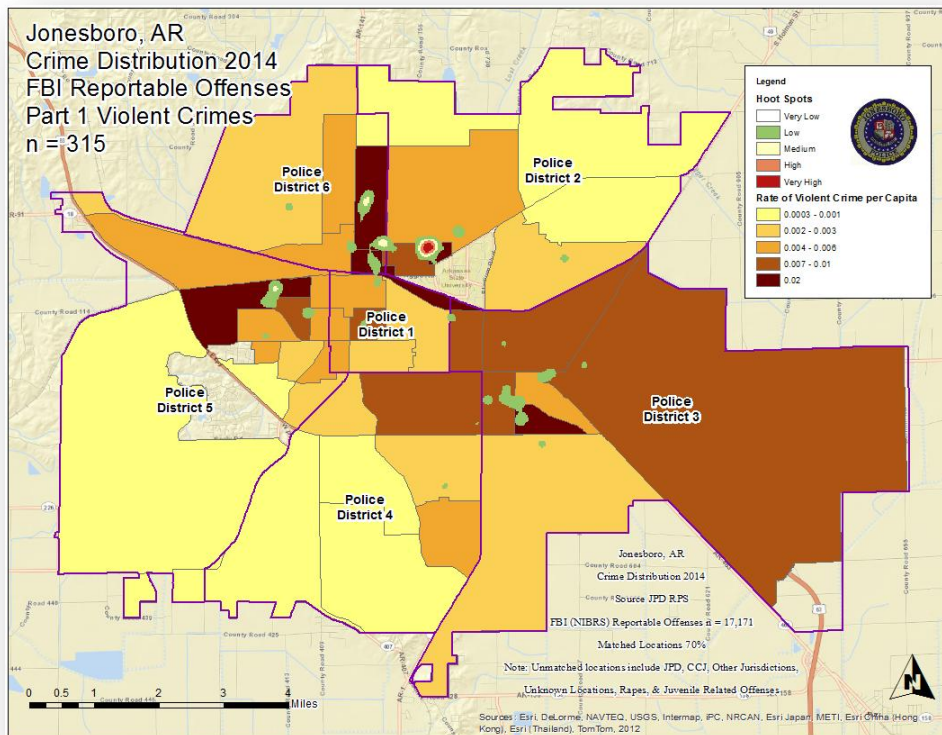


Figure 5: Crime rate density per Census Block

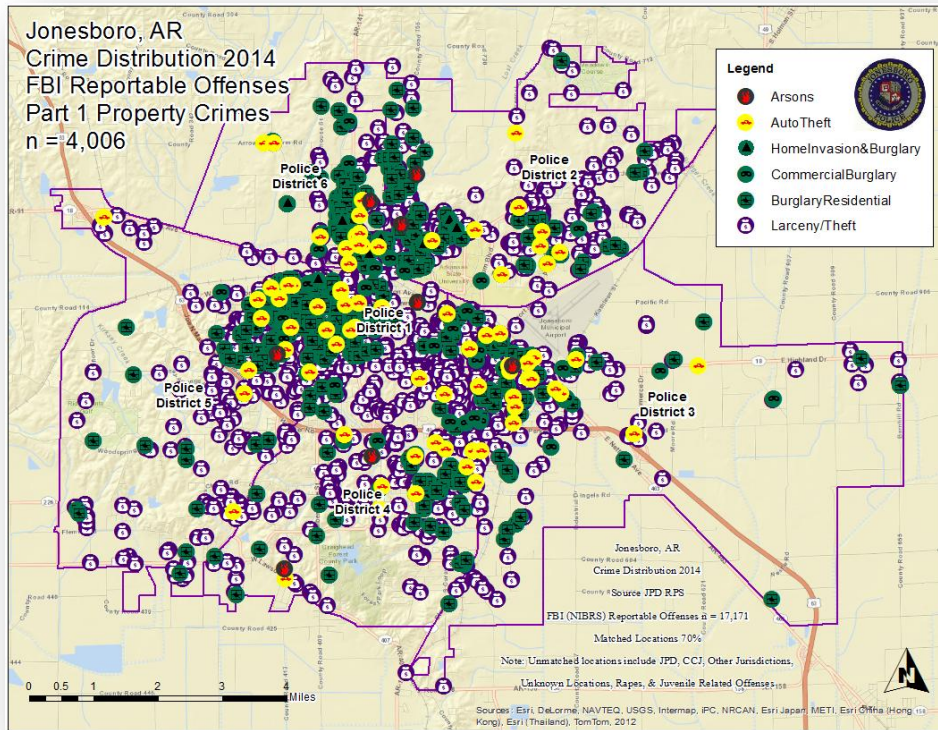


Figure 6: Crime distribution by point in relation to Police Districts

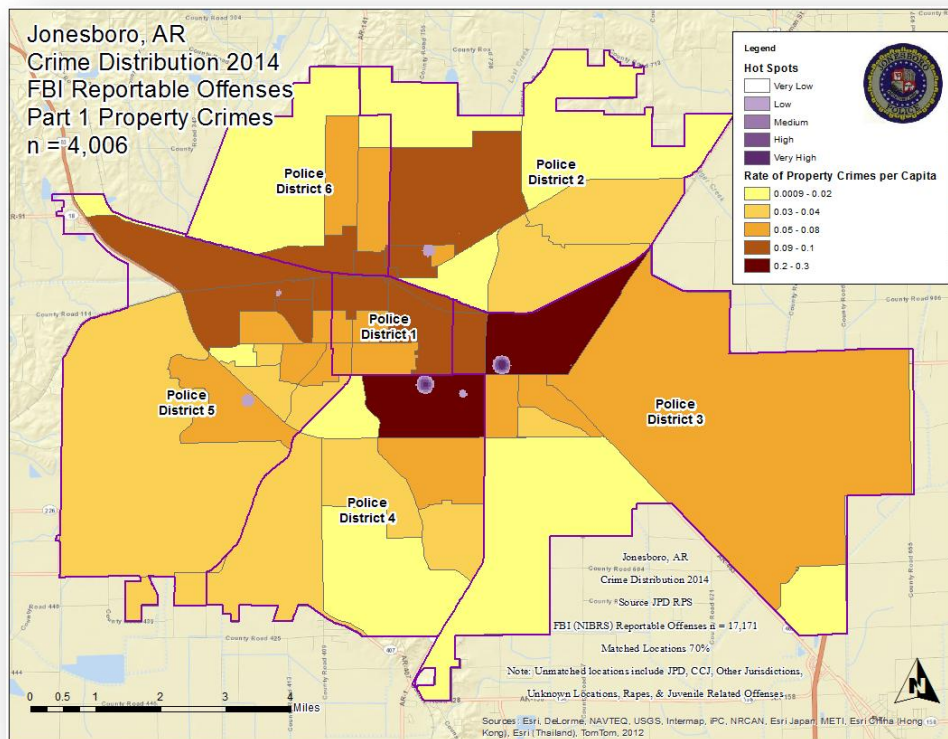


Figure 7: Crime rate Density per Census Block

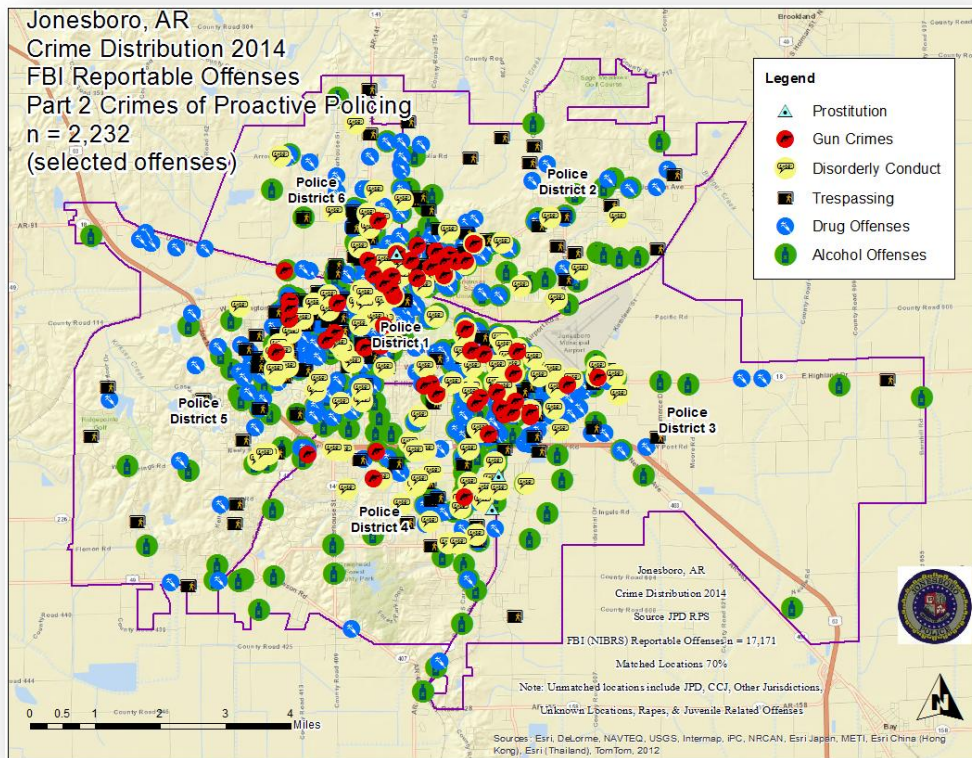


Figure 8: Crime distribution by point in relation to Police Districts

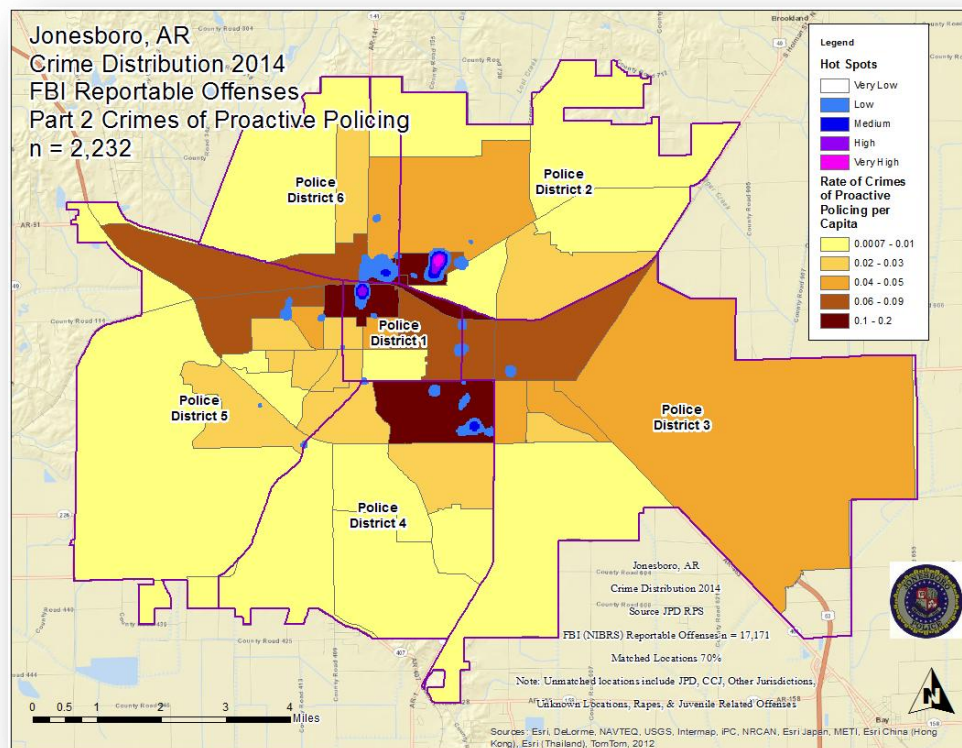


Figure 9: Crime rate Density per Census Block

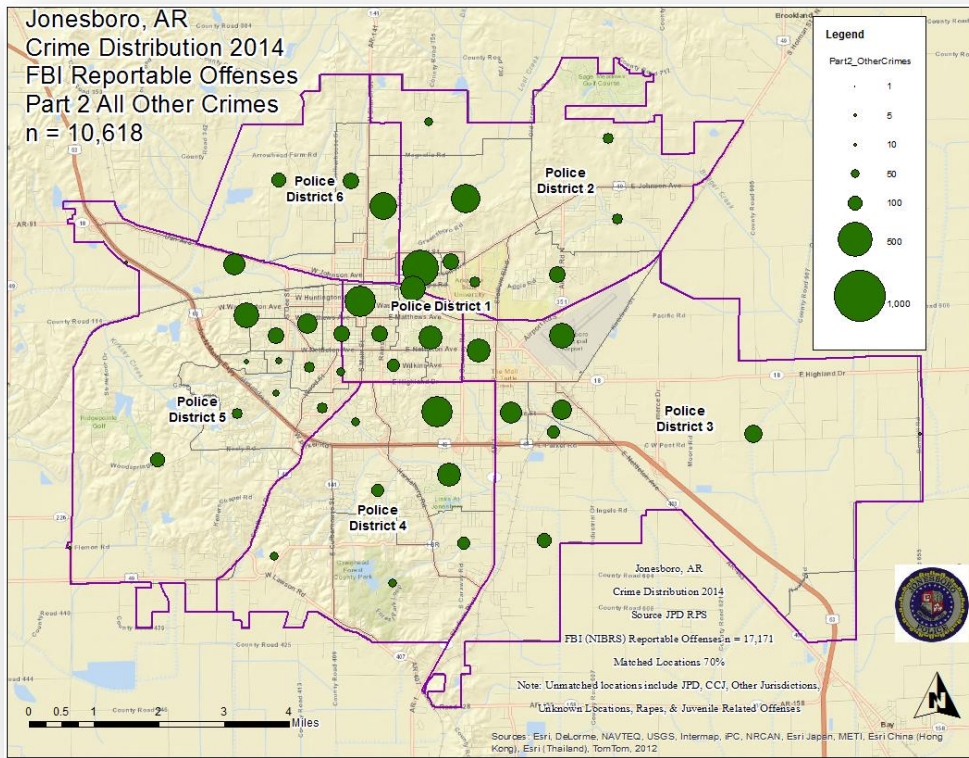


Figure 10: Crime distribution point clusters in relation to Police Districts & Census Blocks

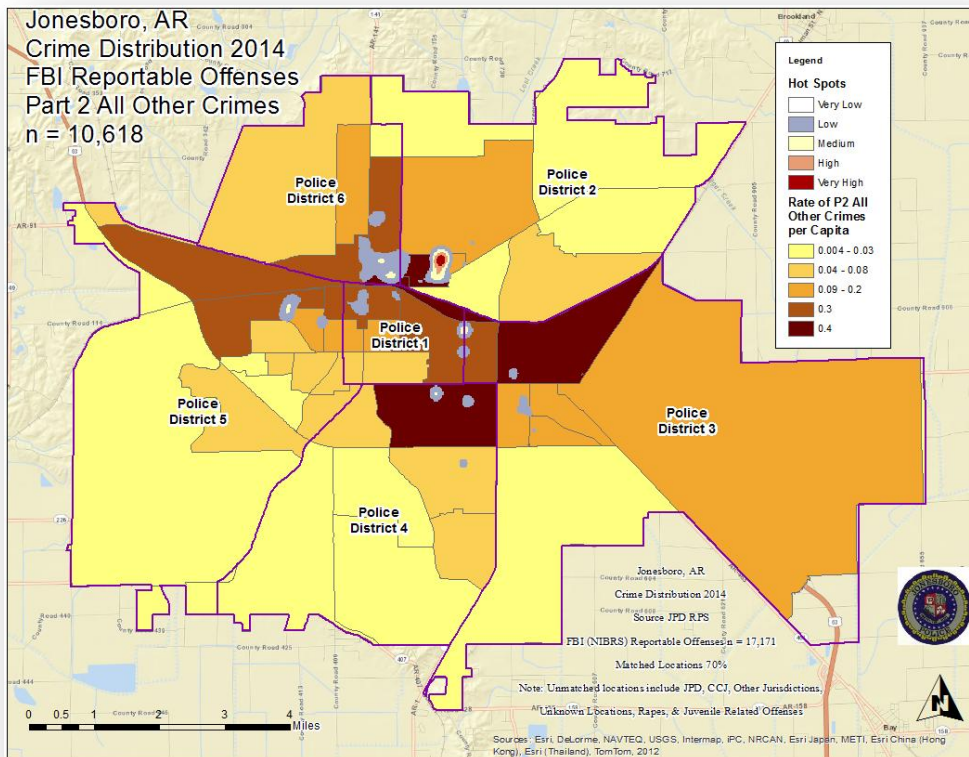


Figure 11: Crime rate Density per Census Block



## ADMINISTRATIVE SERVICES

Administrative Services Division includes Office of Professional Standards, Crime Analysis, Accreditation, Records, Fleet Services, Quality of Life, and Animal Control with the K-9 Unit. Captain B.J Smith is currently in command of Administrative Services, assisted by an Administrative Sergeant Oldham.

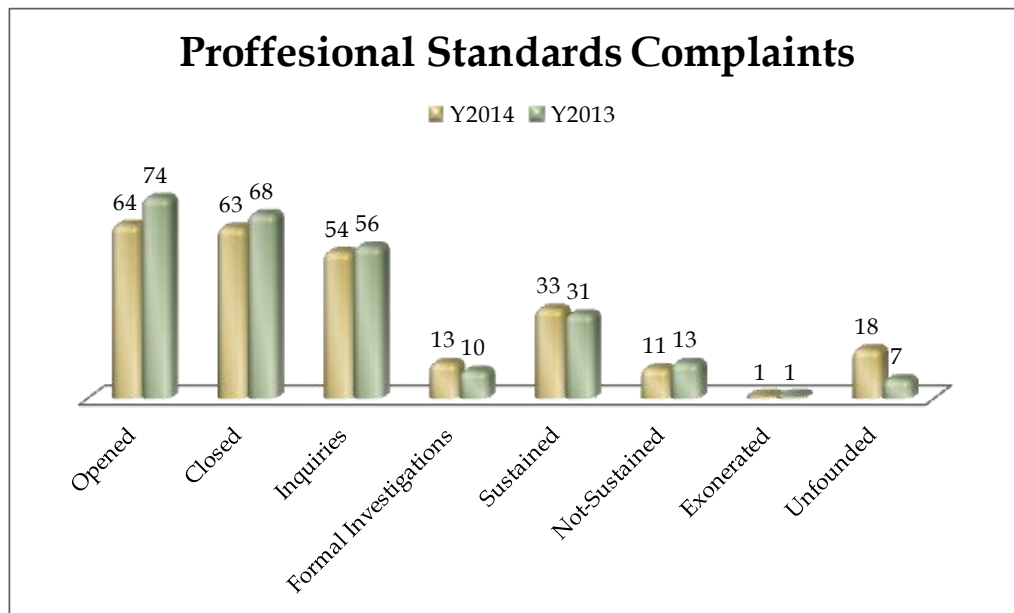
In 2014, the Jonesboro Police Department remained accredited through the Commission on Accreditation for Law Enforcement Agencies (CALEA) and continues to strive for excellence by continuing to adhere to the standards set forth by the commission.

### Administrative Services Division

The Jonesboro Police Department believes the public has a right to expect efficient, fair and impartial law enforcement from officers. The citizens can file a complaint through the Office of Professional Standards that falls under the Administrative Services Division. Each complaint is thoroughly investigated. At the conclusion of an investigation, one of the following dispositions must be given:

- **Unfounded** - The act complained of did not occur
- **Exonerated** - The act occurred, but was justified, lawful and proper
- **Not Sustained** - Insufficient evidence available to prove or disprove the allegation
- **Sustained** - The act did occur and constitutes misconduct

Charts below show details of complaints filed in 2014, comparing it to the previous year.





## Crime Analysis Unit

The Crime Analysis Unit consists of a Certified Crime and Intelligence Analyst and a Crime Analyst Assistant. The Unit is responsible for the analysis and dissemination of crime activity data and the collection and maintenance of crime intelligence information for the city of Jonesboro. Data exported from this division is used by field agents for more effective, efficient policing, administration for improved staffing decisions, and the Mayor's office for community decision making and enhanced public relations. The Crime Analysis Unit was implemented in the late 2009 and has continued to progress and improve.

Crime analyses occur at various levels, including tactical, operational, and strategic. Crime Analysts study crime reports, arrest reports, and police calls for service to identify emerging patterns, series, and trends as quickly as possible. They analyze these phenomena for all relevant factors, predict or forecast future occurrences, and issue bulletins, reports, and alerts to the department. Crime Analysts work with other police departments and units to develop effective strategies and tactics to address crime and disorder. Other duties of the Unit include preparing statistics, data queries, or maps on demand; preparing information for community or presentations for city officials; answering questions from the public and the press; and providing data and information to support the Jonesboro Police Department, City of Jonesboro, and other entities.

Sociodemographics, along with spatial and temporal information, are all aspects that the Unit looks at to understand what's going on in our jurisdiction as crime analysis employs data mining, crime mapping, statistics, research methods, desktop publishing, charting, presentations, critical thinking, and a solid understanding of criminal behavior. In this sense, the Crime Analysis Unit serves as a combination of information systems specialists, statisticians, researchers, and criminologists for the JPD and the City of Jonesboro.

Crime Analysis Unit continued to serve the Department by providing accurate, timely, and professional analysis and forward- thinking research to enable officers and both decision and policy makers to make the best informed decisions. In 2014, the unit continued its assistance in investigations conducted by CID, DTF, Prowl Unit, Traffic, and Uniform Patrol Division, providing them with reports, crime series analysis, maps, forecasting, intelligence, investigative analysis, various evaluations, and other tools necessary for solving cases and addressing safety issues. In 2014, the crime analyst became a member of the Master Street Plan Committee. Further, the crime analyst continues the collaboration with the Craighead County DWI Court, for which she conducts analysis, evaluation, and writes grant proposals/applications with a purpose of soliciting funds necessary to the successful operation of the program. The CC DWI Court was awarded \$15,000.00, which was used at the Annual National Drug/DWI Courts Conference. In addition, as certified Homeland Security Liaison Officer, the crime analyst continued on enhancing collaboration and communication with the Arkansas Fusion Center and the FBI Little Rock Field Office, expanding capabilities of information gathering with the purpose of producing even more reliable and valid intelligence regarding both domestic and international terrorism.

The Crime Analysis Unit will continue to strive for excellence in 2015 through fostering data analysis and dissemination processes by applying advanced Information and Technology to achieve results-driven crime prevention methods to all the JPD units. This will be achieved through even more improving current crime analysis unit processes and procedures and through a further expansion of current crime analysis resources. The Crime Analysis Unit conducted all data analysis related to the “Jonesboro Crime 2014” found previously in this report.

## Records

The Records Division is responsible for providing administrative and clerical support to the department. Major responsibilities include entering the accident and incident reports and tickets into the records database management system, assisting the general public for report requests, performing criminal backgrounds, serving as a switchboard at times, performing validations, and setting up and managing the payment plans out of court.

RECORDS	Y2014	Y2013	%Change
Incident/Arrest Reports Processed	14772	14692	1%
Accident Reports Processed	2843	2561	11%
Citations Processed	39671	46729	-15%
Warnings Processed	17346	9906	75%
Backgrounds	91	217	-58%
Fingerprints	0	1240	-100%
Photos	2	8	-75%
Accident Requests	870	1402	-38%
Accident Requests Online	1,811	1,411	28%

## Animal Control & K-9 Unit

The Animal Control Division is responsible for educating the public on safe and humane issues regarding animal treatment, enforcing all animal laws and ordinances, assisting the public in resolving animal issues, and protecting the safety and welfare of the citizens and animals in this community. The Jonesboro Police Department Animal Control Division is the first-line resource for information concerning the most effective methods to help Jonesboro become Arkansas's model city for the humane treatment of animals, elevating the perception and professionalism of the Animal Control Officer and continuing to improve the effectiveness and efficiency of Animal Control.

Incident/Service	Y2014	Y2013	% Change
Barking Complaints	77	96	-20%
Bite Reports	50	55	-9%
Door Hangers	647	586	10%
Welfare Checks	695	676	3%
Advised of Rights	11732	10789	9%
Incident Reports	49	29	69%
Gone on Arrival	659	515	28%
Complaints	9971	8184	22%
Desk Complaints	17683	18188	-3%
Captured Dogs	1786	1805	-1%
Captured Cats	286	225	27%
Captured Wildlife	376	454	-17%
Chemical Captures	12	14	-14%
Traps	391	450	-13%
Deceased Animals	739	608	22%
Assist J.P.D.	65	71	-8%
Assist C.S.O.	104	37	181%
Public Relations	3800	4940	-23%
CITATIONS ISSUED	619	488	27%
WARNINGS ISSUED	1434	1327	8%
Physical Arrests	41	47	-13%
City Warrants Served	147	74	99%
County Warrants Served	2	3	-33%
Felony Bench Warrants	0	3	-100%
Euthanized	930	1206	-23%
Deceased Animals Landfill lbs.	29170	43710	-33%
Wildlife Euthanized	276	454	-39%
Sent to Rescue Centers	192	76	153%
Adoptions	582	427	36%
Miles Driven	96,384	109,249	-12%

Police K-9 consists of **6** Dual purpose Narcotic K-9's and **1** Dual purpose Bomb K-9. Sergeant Larry Rogers is in command of the Animal Control Division.

<b>Activity</b>	<b>Total</b>
<b>Deployment</b>	
Narcotics (Vehicle)	797
Narcotics (Building)	35
Narcotics (Area Search)	21
Track	144
Building Search	51
Area Search for suspect	33
Article Search	5
Patrol Assist	66
Suspect Apprehension	23
SWAT Assist	5
Assist Outside Agency	17
Suspect Engaged (Bite)	3
<b>Felony Arrest</b>	109
<b>Misdemeanor Arrest</b>	108
<b>Seizures*</b>	
Marijuana (Grams)	100,129 grams = 221 pounds and 3 ounces
Methamphetamine (Grams)	7512 grams = 16 pounds and 8 ounces
Cocaine (Grams)	5 grams
Heroin (Grams)	24 grams
Currency	\$ 53,201.00
<b>Search and Rescue</b>	
Lost person/Missing person	1
<b>Bomb Deployment</b>	
Buildings	2
Special events	1 (Dignitary at ASU)
Vehicles	0

\*(28 grams = 1 ounce / 453 grams = 1 pound)

### Quality of Life Unit

The Quality of Life Unit was created in October 2012. The purpose of the QOL Unit is to reduce crime in specific areas of Jonesboro by exploring and utilizing all the available resources of the City of Jonesboro in coordination with efforts by citizens and private groups in Jonesboro. There are two basic principles that guide Unit's actions. The first is that physical disorder is both a byproduct as well as an attractant to criminal activity, and that if the physical order of a neighborhood is improved, there should be a measurable reduction in criminal activity in that area. Second, the consequences of criminal activity can go beyond incarceration, and include loss of public benefits, eviction, loss of personal property, litigation, etc. The pending application of these alternative consequences can be as much or more of a deterrent to criminal activity than the threat of incarceration. Lieutenant Todd Nelson is overseeing all operations of the unit.

## FLEET MAINTNANACE

The Fleet Maintenance Division is responsible for all of the police vehicle maintenance upkeep, cleanliness, and purchasing. In addition, this division handles most of the purchasing of equipment, supplies, and uniforms for the entire police department.

Repair Costs by Model Year	Y2014	Y2013	% Change
95-99	\$ -	\$ -	N/C
2000	\$ 2,068.09	\$ -	N/C
2001	\$ -	\$ -	N/C
2002	\$ -	\$ -	N/C
2003	\$ 331.48	\$ 1,791.95	-82%
2004	\$ 944.01	\$ 2,113.93	-55%
2005	\$ 2,351.10	\$ 1,010.55	133%
2006	\$19,806.15	\$31,227.47	-37%
2007	\$19,595.76	\$29,618.13	-34%
2008	\$18,203.39	\$ 7,936.35	129%
2009	\$ 8,736.48	\$ 5,270.19	66%
2010	\$ 2,603.03	\$ 442.57	488%
2011	\$ 5,054.31	\$ 2,661.92	90%
2012	\$ 1,250.81	\$ 418.87	199%
2013	\$ 1,685.62	\$ 591.79	185%
2014	\$ 3,136.08	\$ -	N/C
<b>Totals</b>	<b>\$85,766.31</b>	<b>\$83,083.72</b>	<b>3%</b>

Routine Preventative Maintenance by Model Year	YTD	Last YTD	Change YTD
95-99	\$ 24.50	\$ 174.13	-86%
2000	\$ 40.00	\$ 29.00	38%
2001	\$ -	\$ 186.59	-100%
2002	\$ -	\$ 20.00	-100%
2003	\$ 187.54	\$ 367.59	-49%
2004	\$ 1,261.77	\$ 1,255.89	0%
2005	\$ 1,146.54	\$ 1,698.82	-33%
2006	\$ 6,913.17	\$13,132.34	-47%
2007	\$10,321.90	\$12,853.89	-20%
2008	\$ 3,843.20	\$ 4,846.22	-21%
2009	\$ 7,006.77	\$ 7,113.36	-1%
2010	\$ 1,178.78	\$ 1,847.49	-36%
2011	\$16,914.42	\$11,431.99	48%
2012	\$ 1,860.49	\$ 667.25	179%
2013	\$ 1,565.81	\$ 1,451.40	8%
2014	\$ 3,743.66	\$ 457.80	718%
<b>Totals</b>	<b>\$56,008.55</b>	<b>\$57,533.76</b>	<b>-3%</b>

## UNIFORM PATROL DIVISION

Captain Scott Roper is in command of the Patrol Division.



The uniformed officers of the Patrol Division are the providers of around the clock police services. Along with the primary responsibility to answer citizen generated calls for service and assistance, these officers provide the visible police presence that helps deter crime. Jonesboro is divided into six patrol districts. Officers from the UPD are assigned to a district and work the same district every shift. In addition, when a Traffic Officer is not available, a UPD Officer will respond to traffic accidents and assist in directing traffic when necessary. UPD works three shifts 7-3, 3-11, and

11-7. Each shift has one Lieutenant and three Sergeants. In 2014, UPD moved the desk Sergeant from the Justice Complex on Washington Avenue to the new police department building on Caraway Road. The division has been testing body worn cameras with hopes of purchasing a body camera system for all UPD officers in 2015. The division will also add ten new vehicles to its fleet. A total of fifteen new officers joined the division this past year, of which ten are still in training.

The patrol division officers continued to be at the forefront of department response to criminal activity and many officers were awarded for particularly outstanding case work, notable arrests, and acts of bravery and above average acts of community service. Jim Chamber was promoted to 2<sup>nd</sup> shift Lieutenant and Trey Dupuy was promoted to 2<sup>nd</sup> shift Sergeant.

UPD	YTD	Last YTD	Change YTD
Calls for Service	87,423	89,224	-2%
Complaints	55,693	55,727	0%
Assists	13,750	13,527	2%
Incident Reports	10,551	12,260	-14%
Street Accidents	1,089	973	12%
Private Property Accidents	564	483	17%
Traffic Stops	30,834	27,133	14%
Traffic Citations	5,920	7,785	-24%
Written Warnings	15,098	11,226	34%
DWI	271	452	-40%
Mis. Arrests	4,475	5,850	-24%
Felony Arrests	1,107	1,232	-10%
Warrants Served	10,243	15,366	-33%
Alarms	4,800	4,541	6%
Hours Worked	95,197	109,676	-13%

## CRIMINAL INVESTIGATION DIVISION

Criminal Investigation Division is led by Captain Lynn Waterworth.

### Criminal Investigation Division, 2014 Annual Report Summary

The Criminal Investigation Division is charged with the responsibility to investigate criminal incidents and activity, identify persons responsible for those crimes, and complete all investigative and reporting elements necessary to lead to the successful prosecution of the perpetrator(s). The past year was a demanding one for this division, with many challenges and changes. The unit investigated 21% more cases in 2014 than in 2013. Many of those cases were complex, involving many man hours, but despite the increase being handled by the same number of investigators, they still managed to complete 21% more arrests in 2014 than in the previous year.



Beginning early in the spring and continuing through most of the summer, our city was plagued with a series of vehicle break-ins. We utilized a number of investigative measures, from area specific, late night visual surveillance, collection and submission of any available physical evidence, door to door neighborhood canvasses, to the use of stationary cameras in key areas that would not only capture a photo, but would alert investigators to activity in the vicinity. Investigators were eventually able to identify and arrest seven people in connection to three major series of related incidents, clearing a total of just over 130 vehicle break-ins with those arrests.

Statistically, the city saw a significant spike in the homicide rate for 2014, much of which was due to a tragic incident that took place in May where three victims lost their lives to a single suspect. That incident, which also involved four other victims who survived despite grievous injuries, required an enormous amount of coordination and teamwork. Investigators were faced with coordinating incoming information from a number of sources, managing multiple crime scenes, conducting numerous interviews of victims and witnesses at a number of locations and also faced the difficult task of locating and notifying family members of the tragedy and loss of loved ones.





One of the biggest challenges for the division in 2014 was the complete move of not only all the investigative personnel and their offices to the new location on Caraway Rd, but also the move to the new facility of over 16,000 items of evidence. The relocation of this function enabled the central storage in a single space of all of the evidence which was previously divided among four smaller storage spaces. An additional gain was a larger and more secure area for guns, drugs and valuables which is also included within the new single space. All of the investigators were called on to assist in the move so that it could be completed in a timely and secure manner. A complete inventory was conducted after all of the pieces were relocated to the new facility and all items were accounted for and were sorted and stored according to new state accreditation and national IAPE guidelines.

The detectives assigned to this unit take pride in investing in our community and take advantage of many opportunities to interact through providing training for local businesses, presentations for local schools and other activities. An event we always enjoy participating in is National Night Out. We again were present for the North-side Community NNO celebration where the detectives cooked and served over 300 hamburgers and hotdogs while enjoying some positive fellowship with those in attendance, along with the wide variety of entertainment showcased that evening.



With crime trends growing in the area of technology, the necessity for additional training for investigators is no longer optional. We are in the process of procuring additional technology-assisted and computer crime investigation training for more than one investigator in this field. We are also working toward completing introductory level training for any future forensic examiner replacement, since such training often takes as long as two years to complete and we must be prepared maintain a continuous work flow in the event of the loss of any investigator. As a subunit of the national and state ICAC (Internet Crimes against Children) task force, our ICAC unit investigated 34 cybertips and cases involving the sexual exploitation of children and underage teens. Along with those responsibilities, our computer forensics investigators also conducted over 220 of phone, storage device and computer examinations to procure evidence in those cases, as well as a number of other cases involving different types of crime, such as robbery, homicide and theft investigations.

As our city grows, so does the need for additional personnel, not just in patrol, but for the support functions of those personnel, such as the Criminal Investigation Division. While overall crime dipped slightly during 2014, the division's focus shifted to make greater efforts to solve an even larger percentage of overall crime, which actually served to increase the case load being handled by individual investigators. We were fortunate to be able to free up available time for one investigator through the reassignment of the responsibility for sex offender registration to a new civilian technician and will be looking to soon add at least one or two additional general investigators, as well as an additional CSI investigator. By increasing efforts to solve even more crime, the goal is to apprehend more perpetrators with the eventual intended result to reduce overall crime even further.

The Jonesboro Police Department Criminal Investigation Division strives to produce quality work through the efforts of well trained and dedicated investigators. During the past year, detectives attended a variety of different types of training in order to stay on top of their game or to further enhance their value to the division. Much of the training may be short term, perhaps a day or week, but others involve many hours of study over a number of months in order to achieve certification. For example, Det. Jason Simpkins successfully completed polygraph examiner certification training, receiving the distinguished student award for the class and adding a second examiner for our department. Additionally, Det. Sgt Cassandra Brandon completed the School of Law Enforcement Supervision, also receiving the most distinguished student award for that class. This unit has faced many hurdles throughout the years in its effort to solve crimes and prepare solid cases for eventual prosecution. We fully expect 2015 to bring a new set of challenges and are prepared to meet them head on. We are committed to the pursuit of justice, and strive each day to do the best job we possibly can for the citizens of our great city.

<b>Investigations</b>	<b>Y2014</b>	<b>Y2013</b>	<b>% Change</b>
Criminal Investigations Assigned	1702	1472	16%
Criminal Investigations Closed	1176	1017	16%
Cleared by Arrests	748	618	21%
Unfounded	126	125	1%
Exceptionally Cleared	211	155	36%
Filed With Prosecutors Office	55	81	-32%
<b>Crimes Against Persons</b>	<b>YTD</b>	<b>Last YTD</b>	<b>Change YTD</b>
Criminal Investigations Assigned	455	367	24%
Criminal Investigations Closed	379	316	20%
Cleared by Arrests	227	205	11%
Unfounded	44	45	-2%
Exceptionally Cleared	92	44	109%
Filed With Prosecutors Office	16	22	-27%
<b>Property Crimes</b>	<b>YTD</b>	<b>Last YTD</b>	<b>Change YTD</b>
Criminal Investigations Assigned	1093	960	14%
Criminal Investigations Closed	696	578	20%
Cleared by Arrests	483	377	28%
Unfounded	64	64	0%
Exceptionally Cleared	123	100	23%
Filed With Prosecutors Office	26	37	-30%
<b>Crimes Against Children</b>	<b>YTD</b>	<b>Last YTD</b>	<b>Change YTD</b>
Criminal Investigations Assigned	100	114	-12%
Criminal Investigations Closed	69	85	-19%
Cleared by Arrests	40	36	11%
Unfounded	18	17	6%
Exceptionally Cleared	3	10	-70%
Filed With Prosecutors Office	8	22	-64%
	YTD	Last YTD	Change YTD
Miscellaneous Investigations Assigned	0	0	N/C
Miscellaneous Investigations Cleared	38	18	111%

## SPECIAL SERVICES DIVISION

Captain Kelly Baggett is currently in command of the Special Services Division.

The Special Services Division of the Jonesboro Police Department provides the citizens of Jonesboro and those who visit our city with the most professional police services possible. The division works with and supports other divisions within the police department to help to ensure the department functions at or above expectations.

### Recruiting & Training

The City of Jonesboro Human Resources Department, along with the Jonesboro Police Department's Administration, including the Chief of Police, Administrative Captain and Recruiting Officer are responsible for administering the hiring process. The City of Jonesboro is an Equal Opportunity Employer. The City of Jonesboro does not discriminate on the basis of race, color, religion, sex, national origin, marital or veteran status, political status, disability status, or other legally protected status.

According to the Recruiting Officer, Sgt. Waterworth, in 2014, the JPD has offered full time employment to a total of 17 qualifying applicants, out of which, 17 applicants accepted the offer.

### Prowl Unit

The Prowl unit is a uniformed street crimes unit specializing in criminal patrol, narcotics enforcement, gang investigation, and prostitution activity. The unit conducts directed patrols, investigates citizen complaints of street-level criminal activity, and directly assists the 2<sup>nd</sup> Judicial Drug Task Force. PROWL also assists any division within the Jonesboro Police Department at any time when needed.

Incidents	Y2014*	Y2013*	% Change
Street Accidents	0	0	N/C
Private Property Accidents	0	2	-100%
Traffic Citations	92	260	-65%
DWI	0	0	N/C
Mis. Arrests	778	1,236	-37%
Felony Arrests	198	291	-32%
Drug Arrests	167	291	-43%
Public Intoxication Arrests	0	0	N/C
Calls For Service	446	790	-44%
Alarms	0	0	N/C
Parking Citations	0	0	N/C
Written Warnings	451	722	-38%
Assists	0	0	N/C
Value of Drugs Seized	\$152,965	\$101,730	50%
Value of Asstes Seized	6,534	41,044	-84%
Patrol Miles	56,013	81,400	-31%

*\*Totals based on January through November*

## Warrants Division

The Warrant Division is responsible for serving warrants, criminal summonses, and subpoenas that are issued by the District Court. On city court days, the Warrant Division provides a bailiff for court and a transport officer. In addition, this division is responsible for transporting wanted persons arrested in other jurisdictions back to Jonesboro. The Selected Traffic Enforcement Program (STEP) operates within this division and is a grant-funded operation in where officers are directed to enforce strategic offenses such as seat belt compliance and impaired driving.

Arrests	Y2014	Y2013	% Change
Misdemeanor	12	4845	-100%
Felony	3	6	-50%
<b>Total Arrests</b>	<b>15</b>	<b>4851</b>	<b>-100%</b>
Warrants by Activity	YTD	Last YTD	Change YTD
Subpoenas	4420	6183	-29%
Commitments	75	66	14%
Traffic Citations	9468	17	55594%
Complaints	8	43	-81%
Assist	40	3	1233%
Alarms	8	0	N/C

Hours by Activity	YTD	Last YTD	Change YTD
SI Criminal	1478.5	2113.15	-30%
Court	1223	1261.67	-3%
Prisoner Transport	446.5	482.17	-7%
Hours Worked	YTD	Last YTD	Change YTD
Regular Hours Worked	5865	6665.5	-12%
Overtime Hours Worked	173	84.3	105%
<b>TOTAL Hours Worked</b>	<b>6038</b>	<b>6749.8</b>	<b>-11%</b>
Mileage	YTD	Last YTD	Change YTD
<b>Total Mileage</b>	<b>33047</b>	<b>37895</b>	<b>-13%</b>

STEP	YTD	Last YTD	Change YTD
DWI Arrest	1	0	N/C
DUI Arrest	0	0	N/C
Traffic Citations	33	125	-74%
Felony Arrests	0	1	-100%
Drug Arrests	0	0	N/C
<b>STEP TOTALS</b>	<b>91</b>	<b>126</b>	<b>-28%</b>
<b>STEP Hours Worked</b>	<b>108.5</b>	<b>135</b>	<b>-20%</b>
<b>STEP Miles Driven</b>	<b>486</b>	<b>776</b>	<b>-37%</b>

## Drug Task Force

The DTF is responsible for investigating major drug traffickers in the area, including all types of illegal drugs. They work closely with local, state, and federal agencies to eradicate drugs from the community.

INVESTIGATIONS	Y2014	Y2014	% Change
Opened	331	249	33%
Closed	240	181	33%
<b>TOTAL</b>	<b>571</b>	<b>430</b>	<b>33%</b>
With Nexus to Jonesboro	YTD	Last YTD	Change YTD
Opened	296	210	41%
Closed	0	0	N/C
<b>TOTAL</b>	<b>296</b>	<b>210</b>	<b>41%</b>
Outside Jonesboro (No Known Nexus)	YTD	Last YTD	Change YTD
Opened	4	6	-33%
Closed	0	0	N/C
<b>TOTAL</b>	<b>4</b>	<b>6</b>	<b>-33%</b>
ASSISTANCE RENDERED	YTD	Last YTD	Change YTD
Assist to Outside Agencies	10	3	233%
Assist to Jonesboro UPD/CID	110	87	26%
ARRESTS	YTD	Last YTD	Change YTD
Miscellaneous	165	88	88%
Felony	388	317	22%
Marijuana	41	65	-37%
Cocaine	5	13	-62%
Crack Cocaine	14	12	17%
Methamphetamine/ICE	164	118	39%
LSD	1	0	N/C
Extasy (MDMA or Other Designer Drug)	1	3	-67%
Prescription	39	40	-3%
Opiates (Heroin, Opium)	0	0	N/C
Labs	3	5	-40%
All Other Drug Offenses	103	92	12%
ASSET FORFEITURE	YTD	Last YTD	Change YTD
Vehicles Seized (No.)	1	2	-50%
Value of Assets Seized(Includes Value of vehicles)	\$6,814	\$14,941.00	-54%
Asset Value Awarded to Jonesboro PD (State)	\$ -	\$ -	N/C
Asset Value Awarded to Jonesboro PD (Federal)	\$ -	\$ -	N/C
Asset Value Awarded to Jonesboro PD (Total)	\$ -	\$ -	N/C

DTF ARRESTS DEMOGRAPHICS	YTD	Last YTD	Change YTD
White	196	156	26%
African American	80	74	8%
Latino	13	5	160%
Asian	0	0	N/C
Other/Bi-Racial	0	0	N/C
Male	192	158	22%
Female	88	68	29%
White Male	117	94	24%
White Female	79	56	41%
African American Male	62	63	-2%
African American Female	8	11	-27%
Latino Male	11	4	175%
Latino Female	2	0	N/C
Asian Male	0	0	N/C
Asian Female	0	0	N/C
Other/Bi-Racial Male	0	0	N/C
Other/Bi-Racial Female	0	0	N/C

### Traffic Unit

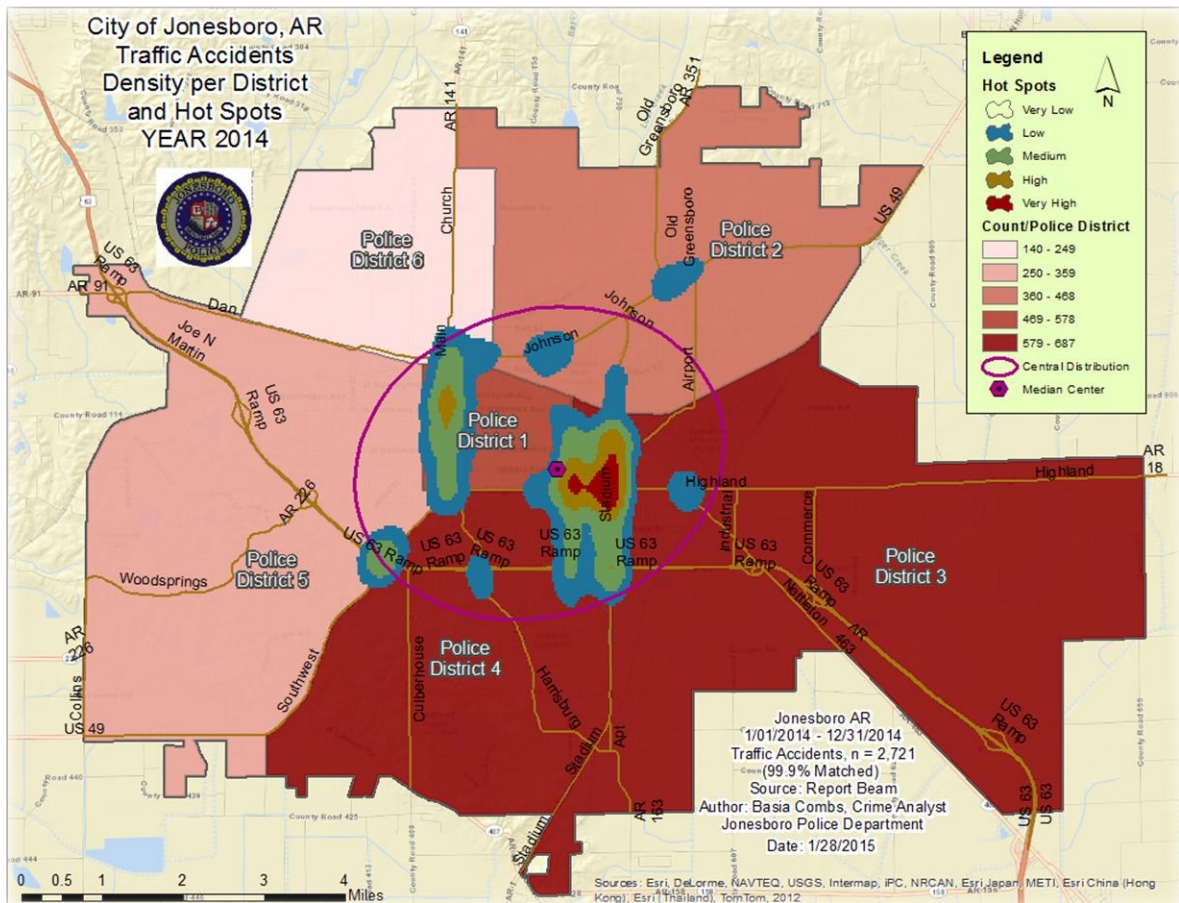
Comprised of four motorcycle units and three Dodge Charger vehicles, the Traffic Enforcement Unit responds to traffic accidents and provides increased enforcement in particularly challenging areas. This unit also provides extra coverage for specific congestion problems and special events in the community. Lastly, they work details targeting specific issues, such as DWI enforcement and traffic safety checkpoints.

Traffic	Y2014	Y2013	% Change
Street Accidents	1683	1684	0%
Private Property Accidents	503	514	-2%
Traffic Citations	1934	1181	64%
DWI	23	17	35%
Mis. Arrests	112	75	49%
Felony Arrests	6	8	-25%
Drug Arrests	0	0	N/C
Public Intoxication Arrests	0	0	N/C
Calls For Service	1251	2767	-55%
Alarms	0	0	N/C
Parking Citations	0	0	N/C
Written Warnings	2266	1966	15%
<b>TOTALS</b>	<b>7778</b>	<b>8212</b>	<b>-5%</b>

Traffic	Y2014	Y2013	% Change
Value of Asstes Seized	\$ -	\$ -	N/C
Patrol Miles	67,062	56,741	18%
Hours Worked	10745	9962	8%

In 2014, there were a total of 2,721 traffic accidents in the city of Jonesboro, a 6% increase comparing to the last year. Of these, there were 7 fatalities, a 75% increase. There were 66 accidents involving persons who had serious injury, a 47% increase from the last year. Persons with non-serious visible injuries totaled 163 (down -16%) and 404 persons had no visible injuries but complaints of pain (down -4%). There were a total of 2,038 persons involved in traffic accidents that had property damage only (up +9%)<sup>2</sup>. Total damage in dollar amount was \$ 12,555,702, a 2% increase from last year. The range of the damage was \$500,000, averaging between \$ 0.00 and \$ 15,121 ( $\mu = \$ 4,614$ ;  $\sigma = \$ 10,506$ )<sup>3</sup>.

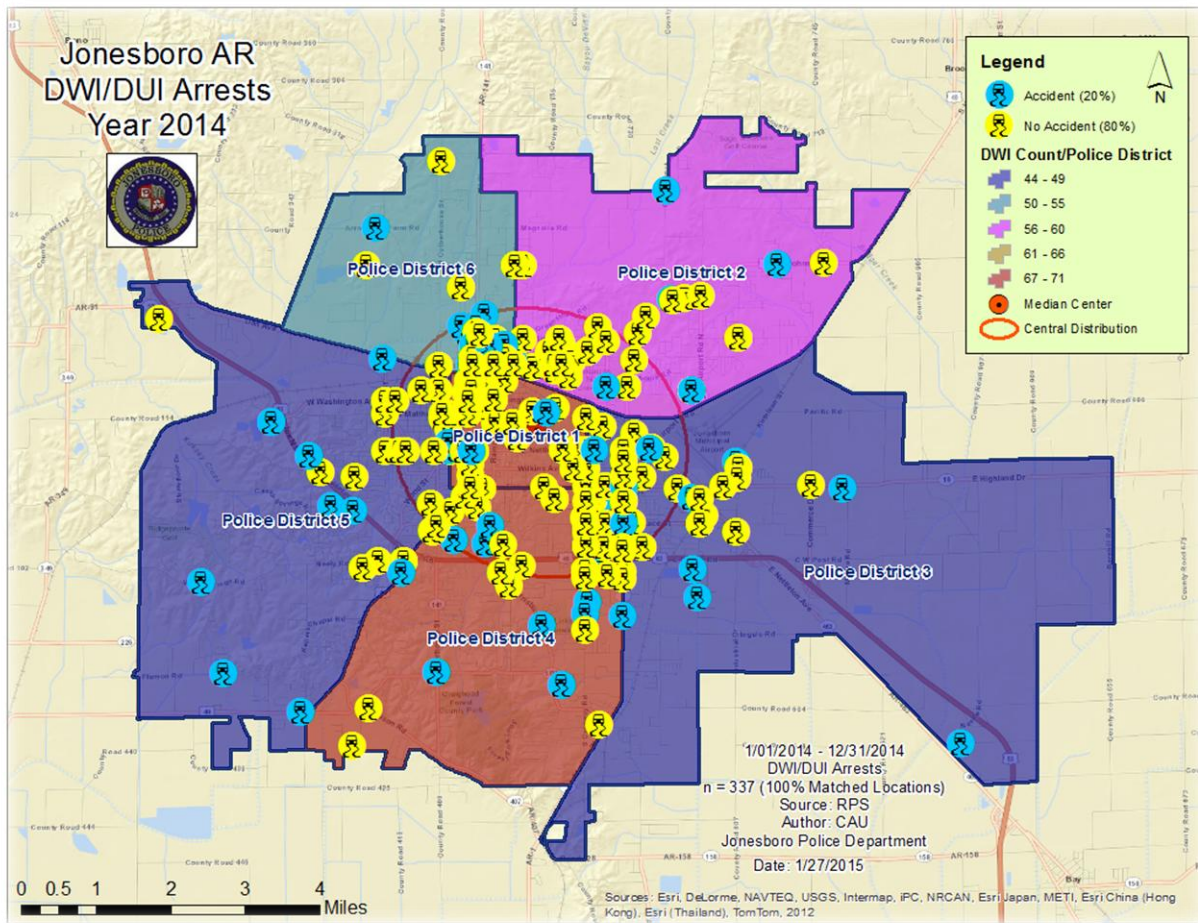
The following map represents traffic accidents distribution and DWI Arrests in 2014.



<sup>2</sup> Missing severity code, n = 43 (1.6%)

<sup>3</sup> Symbol  $\mu$  represents mean or average; symbol  $\sigma$  represents standard deviation or the variation or dispersion from the average





### EMERGENCY 911

Also known as Public Safety Answering Point (PSAP), the Emergency 911 Division is responsible for answering all calls from the public for emergency assistance, accessing the needed information to best assist, and then assigning the most efficient and effective emergency response. In addition, this division is responsible for setting priority call dispatching to field units including Police, Fire, and EMS. Emergency 911 also maintains all records for radio logs, calls for service, and other emergency service data collections.

Calls by Type	Y2014	Y2013	% Change
Land Line E911	10,025	9,573	5%
Cell Phone E911	60,561	52,468	15%
Admin Lines-non emer	169,882	173,869	-2%
<b>TOTALS</b>	<b>240,468</b>	<b>235,910</b>	<b>2%</b>

Calls by Agency	Y2014	Y2013	% Change
Jonesboro PD Calls	86,736	81,920	6%
Craighead Cty Sheriff	18,729	15,793	19%
Jonesboro Fire Dpt - dispatch	2,644	2,371	12%
Jonesboro Fire Dpt - Med Asst	1,801	1,714	5%
Craighead Cty - Fire	639	494	29%
Craighead Cty - 1st Responder	1,412	1,166	21%
Emerson Ambulance	3,710	3,463	7%
Medic One	4,142	3,813	9%
Air Evac	5	5	0%
Coroner	43	39	10%
ARK State Police	95	123	-23%
Jonesboro Animal Control	50	48	4%
Wreckers Called	2,590	2,215	17%
<b>TOTALS</b>	<b>122,596</b>	<b>113,164</b>	<b>8%</b>

Calls by Municipality	Y2014	Y2013	% Change
Bay PD	1446	1417	2%
Bono PD	3486	3255	7%
Brookland PD	2687	1799	49%
Caraway PD	520	860	-40%
Cash PD	2060	1043	98%
Egypt PD	89	160	-44%
Lake City PD	1266	1512	-16%
Monette PD	1391	1628	-15%
<b>TOTALS</b>	<b>12,945</b>	<b>11,674</b>	<b>11%</b>

## OFFICER AWARDS

Every year, the department presents awards to officers who stand out in service to the community. In 2014, thirteen officers have been recognized for their outstanding performance. Their names, type of award, and a brief summary of events leading to their recognition are listed in this section.

### **OFFICER OF THE YEAR & JPD MEDAL OF VALOR**

#### **Cp. John Eidson, Jr.**

On 01 -09 14 Cpl. John Eidson Jr. and other officers responded to the Meadow View Mobile Home Park, 4303 Aggie Road to investigate a vehicle theft. During the investigation the officers encountered a man who had been shot in the torso. While investigating this shooting Cpl. Eidson began talking with an individual at trailer #33. While speaking with the individual, the individual

fired a handgun at Cpl. Eidson. Cpl. Eidson returned fire. The suspect retreated into the trailer and Cpl. Eidson changed positions outside the trailer. The suspect emerged from the rear door of the trailer and raised the weapon at Cpl. Eidson. Cpl. Eidson fired and struck the suspect who fled into the trailer again. Later, the S.W.A.T. team entered the trailer and found the deceased suspect.

### **OFFICER'S MEDAL**

#### **Tim Burns**

On 08 -27-14 Ptl. TJ Burns responded to a call of an elderly female driving down the railroad track near Rook Rd. The female was confused and did not want to leave the stopped vehicle. Ptl. Burns removed the female from the vehicle and took her to safety as a train was approaching. Ptl. Burns then assisted in stopping the train. Ptl. Burns actions saved the female from death or serious injury.

### **MERITORIOUS SERVICE MEDAL**

#### **Jason Chester**

On 04-16-14 Cpl. Jason Chester responded to Kathleen St. in to a call of a child trapped under a concrete pipe. The 12 year old female had become trapped in a water filled ditch under the large pipe while playing with the pipe along with other children. Cpl. Chester gave her CPR which resumed the child's heart function at the scene.

#### **Brett Mann and Erik Johnson**

On 02 -21 -14 Ptl. Mann and PFC. Johnson responded to an apartment fire at 115 State St. A man was trapped inside the burning residence. The officers and firemen entered the residence and rescued the severely burned man.

#### **John Shipman**

On 11 – 05 -14 CPL. John Shipman was sent to 4901 Darr Hill Rd. to an infant drowning call. Upon his arrival CPL. Shipman cleared water from the infant's lungs and started CPR until medical personnel arrived. Ptl. Shipman then cared for a second child and assisted the parents with transportation to the hospital.

### **LIFESAVING MEDAL**

#### **Jeremy Wheelis**

On 02-12 -14 while eating at Barnhills Ptl. Wheelis responded to assist diners with a choking 1 year old child. Ptl. Wheelis laid the child face down on his forearm and cleared the food from the choking child's airway. Ptl. Wheelis never panicked during the incident and acted in a professional manner.

#### **Les Haggard and Jeff Presley**

On 11 –19 -14 A man had a heart attack outside of the Justice Complex. The man was not breathing and did not have a pulse. Les Haggard assisted with CPR and Jeff Presley brought and

AED and they put it on the man. The AED applied the shock and Haggard and Presley continued with CPR until the FD medics arrived.

### **OFFICER OF THE QUARTER**

Quarter	Officer's Name
1 <sup>st</sup> Quarter	R.J. Smith
2 <sup>nd</sup> Quarter	Austin Morgan
3 <sup>rd</sup> Quarter	Chris Jefferson
4 <sup>th</sup> Quarter	Erik Johnson

### **CONCLUSION**

As 2014 came to a close, the JPD reflected on yet another great year in service to the community. Crime is on a decrease, even with an increase in population. However, this is just an indication of the commitment to the community, excellence in organization, communication, and leadership, and the loyalty of the men and women who are employed with the department.

---

---

Basia Combs, MPA, CCIA | Crime Analyst | Office of Crime Analysis & Criminal Intelligence

Jonesboro Police Department | 1001 S Caraway Road | Jonesboro, AR 72401

Ph: 870-336-7196 | E-mail: [bcombs@jonesboro.org](mailto:bcombs@jonesboro.org) | [www.jonesboropolice.com](http://www.jonesboropolice.com)

---